

39/63
1175
MB 39/63

FILED
On MAY 21, 1960

At 1:30 P.M.

Jack A. Ross
County Recorder

By O. A. Wheat
Deputy

Fee \$7.00

No. 11755

Filed by County Clerk

IN THE COUNTY OF RIVERSIDE

RIVERSIDE RIVIERA NO. 5

BEING A SUBDIVISION OF A PORTION OF LOTS 135 AND 144 OF THE LANDS OF THE S. C. C. A.,
M. B. 7, PAGE 3 RECORDS OF SAN BERNARDINO COUNTY, CALIFORNIA, IN JURUPA RANCHO.

JANUARY 1960

SCALE 1" = 100'

J. F. DAVIDSON, C. E.

OWNERSHIP

We hereby certify that we are the owners of or have some right, title or interest in the land included within the subdivision shown hereon; that we are the only persons whose consent is necessary to pass a clear title to said land; that we consent to the making and recording of said map and subdivision as shown within the colored border line and that we hereby offer for dedication for public use for street purposes Lots "A" to "E" inclusive and for the construction and maintenance of all public utilities, the public utility easements designated "G.P.U.E." and "10' P.U.E." and "6x25' P.U.E." We also offer for dedication for public use for street purposes Lots "F" to "H" inclusive, and any and all access rights between Center Street and Lots 1, 2, 3, 4, 5, 6, 37 and 38.

SIGNAL DEVELOPMENTS NO. 1, 2, 3, 4, 5, 6, 7, 8, 9, 10, 11, 12, 13, 14, 15, 16, 17, 18, 19, 20, 21, 22, 23, 24, 25, 26, 27, 28, 29, 30, 31, 32, 33, 34, 35, 36, 37, 38, 39, 40, 41, 42, 43, 44, 45, 46, 47, 48, 49, 50, 51, 52, 53, 54, 55, 56, 57, 58, 59, 60, 61, 62, 63, 64, 65, 66, 67, 68, 69, 70, 71, 72, 73, 74, 75, 76, 77, 78, 79, 80, 81, 82, 83, 84, 85, 86, 87, 88, 89, 90, 91, 92, 93, 94, 95, 96, 97, 98, 99, 100

By Sigurd C. Hanson, President
By Dexter A. Meehan, Secretary

BOARD OF SUPERVISORS

The County of Riverside, State of California, by and through its duly authorized officers hereby approves said final map and accepts the foregoing dedications, except Lots "F" to "H" inclusive, which are accepted contingent on the extension and improvement of the streets.

Dated March 14, 1960. COUNTY OF RIVERSIDE, STATE OF CALIFORNIA
By [Signature] Chairman of the Board of Supervisors

ATTEST:
G. A. REQUESNAT
County Clerk and ex-officio
Clerk of the Board of Supervisors
By Helen Mc Carthy Deputy

TAX COLLECTOR

I hereby certify that according to the records of this office as of this date, there are no liens against the property shown on the within map for unpaid State, County, Municipal or Local taxes or special assessments collected as taxes, except taxes and special assessments collected as taxes now a lien but not yet payable, which are estimated to be \$5.00.

Dated March 9, 1960. DONNAM BOWLER, County Tax Collector
By [Signature] Deputy

COUNTY SURVEYOR

I hereby certify that I have examined this map and find it to be substantially the same as it appeared on the tentative map as filed, amended and approved by the County Planning Commission; that all provisions of the Subdivision Map Act and County Subdivision Regulations have been complied with, and that I am satisfied this map is technically correct.

Dated March 11, 1960. A. C. KEITH, County Surveyor
By G. T. Worsley Deputy

TAX BOND

I hereby certify that a bond in the sum of \$500.00 has been executed and filed with the Board of Supervisors of the County of Riverside, California, conditioned upon the payment of all taxes, State, County, Municipal or Local, and all special assessments collected as taxes which at the time of filing of this map with the County Recorder are a lien against said property but not yet payable and said bond has been duly approved by said Board of Supervisors.

Dated March 14, 1960. G. A. REQUESNAT, County Clerk and ex-officio
Clerk of the Board of Supervisors
By Helen Mc Carthy Deputy

STATE OF CALIFORNIA }
COUNTY OF RIVERSIDE } S.S.

On March 8th, 1960, before me, the undersigned, a Notary Public in and for said County and State, personally appeared SIGURD C. HANSON and DEXTER A. MEEHAN, known to me to be the President and Secretary of SIGNAL DEVELOPMENTS NO. 1 the Corporation that executed the within instrument, and I know them to be the persons who executed the instrument on behalf of the Corporation, and I am satisfied that said Corporation executed the same.

At my office, my hand and official seal:
[Signature] Notary Public in and for said County & State.
My commission expires 9-22-62

COUNTY PLANNING COMMISSION

The tentative map was approved by the Riverside County Planning Commission in accordance with the requirements of law in a duly authorized meeting held the 27th day of October, 1959.

By [Signature] Secretary
Riverside County Planning Commission

CIVIL ENGINEER

I hereby certify that I am a Registered Civil Engineer of the State of California and that this map consisting of two (2) sheets correctly represents a survey made under my supervision during November of 1959; that all monuments shown hereon actually exist or will be in place within one year of recordation of this map.

[Signature] Registered Civil Engineer No. 882

M.B. 39/63 1175
RIVERSIDE RIVIERA NO 5

39/63

39/64

IN THE COUNTY OF RIVERSIDE

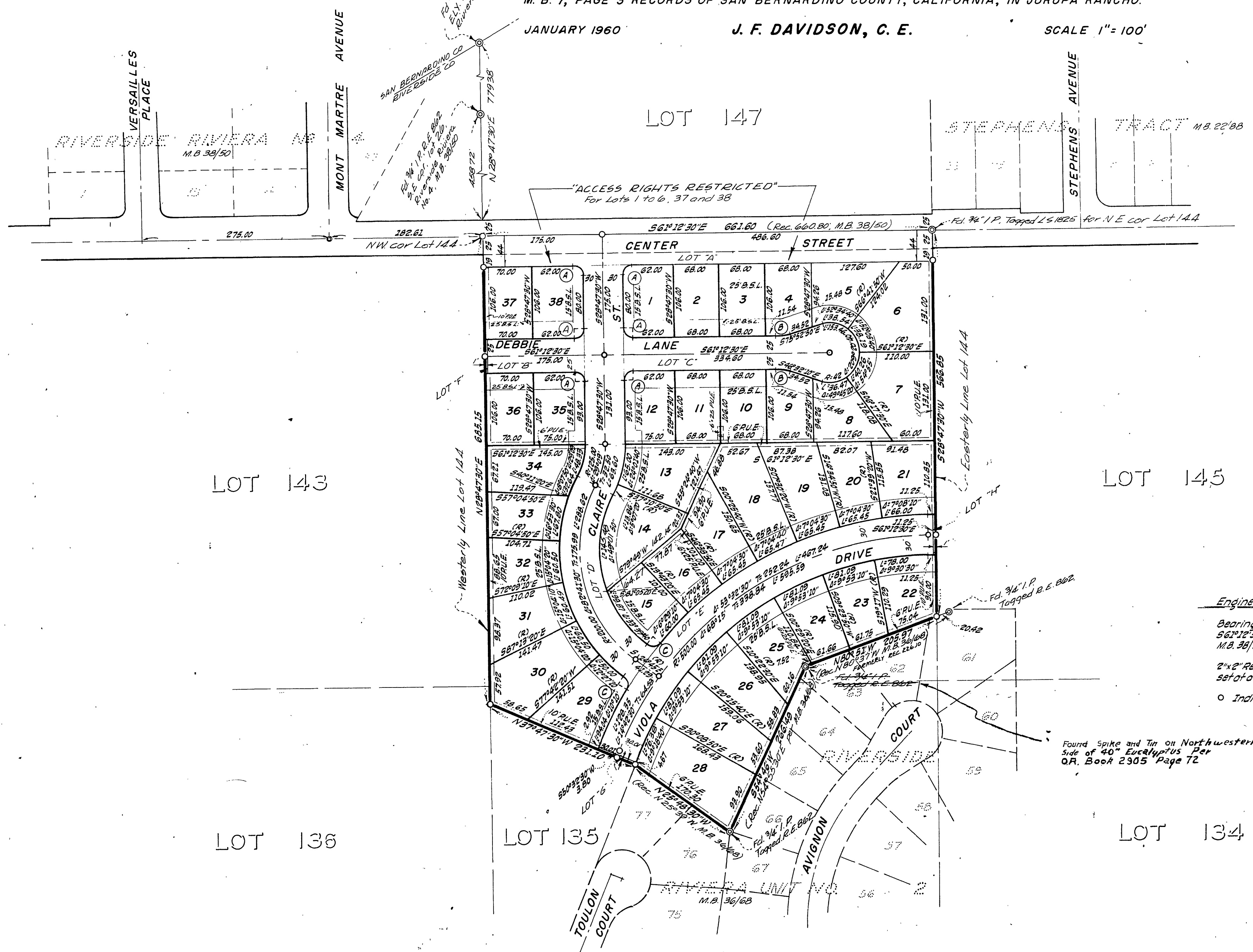
RIVERSIDE RIVIERA NO. 5

BEING A SUBDIVISION OF A PORTION OF LOTS 135 AND 144 OF THE LANDS OF THE S. C. C. A., M. B. 7, PAGE 3 RECORDS OF SAN BERNARDINO COUNTY, CALIFORNIA, IN JURUPA RANCHO.

JANUARY 1960

J. F. DAVIDSON, C. E.

SCALE 1" = 100'



Engineer's Note

Bearings are based on the E of CENTER STREET being $56^{\circ}12'30''E$ as shown on map of "RIVERSIDE RIVIERA NO 4" M.B. 38/50 Records of Riverside County, California.

2"x2" Redwood Stakes, painted white and tagged R.E. 862, set at all lot corners.

o Indicates $\frac{3}{4}$ " Pipe tagged R.E. 862 set.

Found Spike and Tin on Northwestern Side of 40" Eucalyptus Tree
O.R. Book 2905 Page 72

CURVE DATA				
	R	Δ	T	L
"A"	13.00	90°00'	13.00	20.42
"B"	91.00	14°40'20"	11.72	23.30
"C"	13.00	85°27'30"	12.01	19.39

FB. 669-52