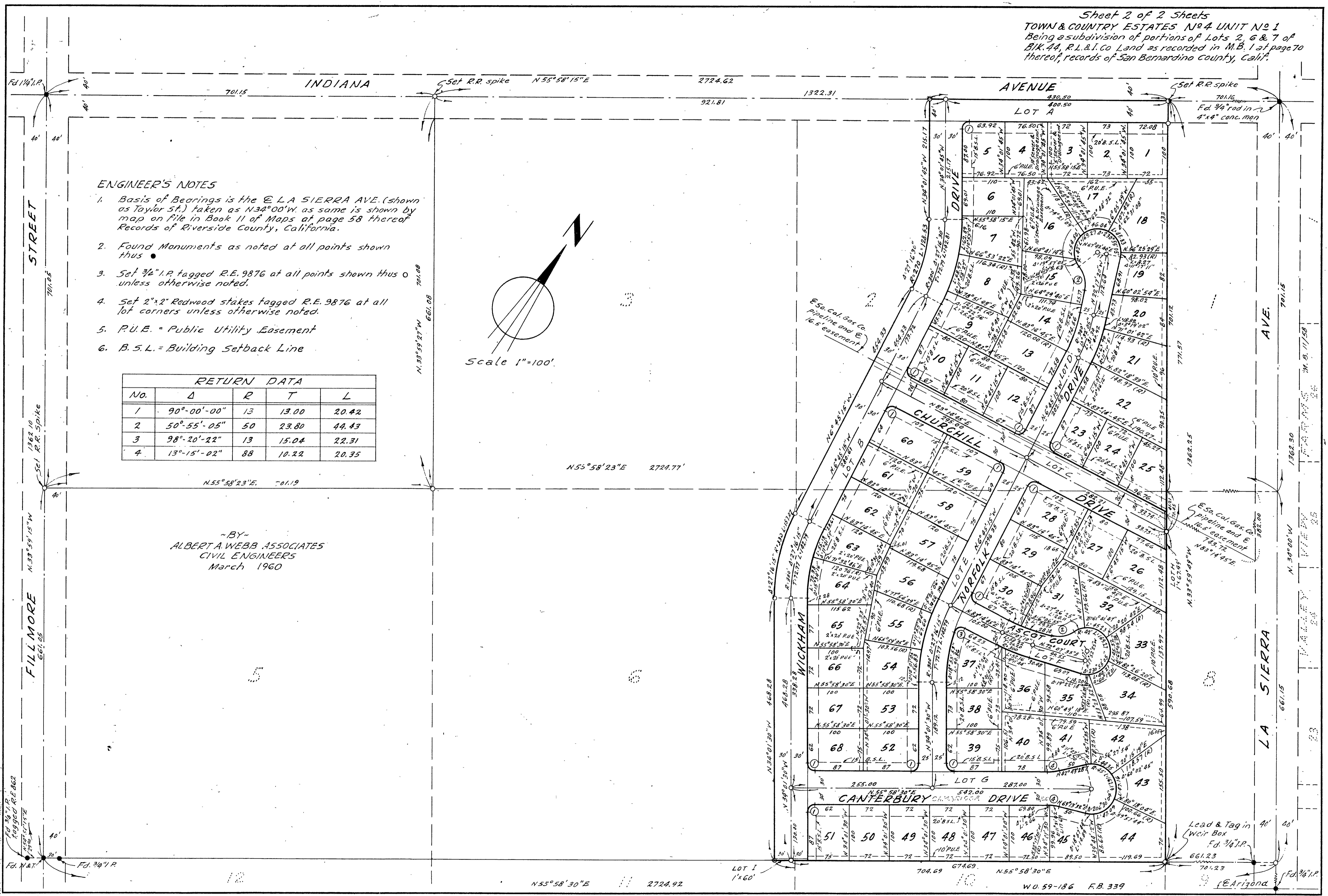




Sheet 2 of 2 Sheets  
 TOWN & COUNTRY ESTATES No 4 UNIT No 1  
 Being a subdivision of portions of Lots 2, 6 & 7 of  
 B.L.K. 44, R.L. & L. Co Land as recorded in M.B. 1 at page 70  
 thereof, records of San Bernardino County, Calif.



ENGINEER'S NOTES

1. Basis of Bearings is the @ L A SIERRA AVE. (shown as Taylor St.) taken as N34°00'W. as same is shown by map on file in Book 11 of Maps at page 58 thereof Records of Riverside County, California.
2. Found Monuments as noted at all points shown thus •
3. Set 3/4" I.P. tagged R.E. 9876 at all points shown thus ○ unless otherwise noted.
4. Set 2"x2" Redwood stakes tagged R.E. 9876 at all lot corners unless otherwise noted.
5. P.U.E. = Public Utility Easement
6. B.S.L. = Building Setback Line

RETURN DATA				
No.	Δ	R	T	L
1	90°-00'-00"	13	13.00	20.42
2	50°-55'-05"	50	23.80	44.43
3	98°-20'-22"	13	15.04	22.31
4	13°-15'-02"	88	10.22	20.35

~BY~  
 ALBERT A. WEBB ASSOCIATES  
 CIVIL ENGINEERS  
 March 1960

