

M.B. 40/4

IN THE CITY OF RIVERSIDE GLENHAVEN KNOLLS UNIT NO. 1

A SUBDIVISION OF PORTIONS OF THE N.E. 1/4 AND THE S.E. 1/4 OF SECTION 36, T. 2 S., R. 5 W., S.B.B. & M.

OCTOBER 1959. SCALE: 1" = 50'

Mc KEE & CRAWLEY
Surveyors and Engineers

SHEET 1 OF 2 SHEETS

Filed for Record this 14th day of May 1960
at 10:45 AM in Book 40 of page 475
at the request of County Clerk

12:00

JACK A. ROSS
County Recorder
by O.A. West
Deputy
Fee \$7.00

SUPERINTENDENT OF LIGHT AND WATER DEPARTMENT

I hereby certify that the subdivider named on this map has deposited with the Water Department of the City of Riverside sufficient funds to cover the cost of installing all necessary fire hydrants together with all water mains and laterals to the curb lines on all streets shown on said map, that all P.U.E.'s shown on this map are sufficient for all requirements of the Electric Light and Water Departments of the City of Riverside and for the Department of Public Utilities of said City.

Dated this 21st day of April 1960.
E.G. Ross by Paul Campbell
Superintendent of Light and Water Department,
City of Riverside, California

CITY PLANNING COMMISSION

I hereby certify that this map was approved by the Riverside City Planning Commission at its meeting held on the 7th day of April 1960.

P. Pauls Fairman
Director of Planning, City of Riverside

STREET SUPERINTENDENT'S CERTIFICATE

I hereby certify that according to the records of this office the property shown on this map is not subject to any special assessments which have not been paid in full.
Dated this 21st day of April 1960.

R.M. Rossi
Street Superintendent, City of Riverside

ENGINEER'S CERTIFICATE

I hereby certify that I am a Registered Civil Engineer in the State of California and that this map consisting of two (2) sheets correctly represents a survey made under my supervision during July, 1959; that all monuments shown hereon actually exist and their positions are correctly shown.

George O. Crawley
Registered Civil Engineer N49455

RESOLVED

That this map consisting of two (2) sheets be, and the same is hereby accepted as the official map of GLENHAVEN KNOLLS UNIT NO. 1 and the streets and easements are accepted as public streets and easements and the City Clerk is hereby authorized and directed to attest said map by signing her name thereto as City Clerk of the City of Riverside, State of California, and to affix the official seal of said City thereto.

I hereby certify that the foregoing resolution was adopted by the Mayor and Council of the City of Riverside this 3rd day of May 1960.

Virginia J. Strohecker
City Clerk of the City of Riverside

CITY TREASURERS CERTIFICATE

I hereby certify that according to the records of this office as of this date, the property shown on this map is not subject to any special assessments, bonds and/or liens which have not been paid in full.

This certificate does not include assessments which have not become a lien upon said property. Dated this 20th day of April 1960.

K.L. Wright
City Treasurer, City of Riverside
James D. Dugan, Sec'y

DIRECTOR OF PUBLIC WORKS CERTIFICATE

I hereby certify that I have examined the within map, that the subdivision shown is substantially the same as it appeared on the tentative map and any approved alterations thereof, that all provisions of Chapter 128 Statutes of California 1943, and of Ordinance N21328 of the City of Riverside, California, and all amendments thereto have been complied with, that the plans and specifications for drains, drainage, sewer and drainage works sufficient to protect all lots in said subdivision from flood or overflow have been approved by me, that all easements for sewers shown on said map are correct in form and contents and are approved and I am satisfied that this map is technically correct.
Dated this 2nd day of May 1960.

J. Mantua
Director of Public Works, City of Riverside

CITY CLERK'S CERTIFICATE

I, V.J. Strohecker, City Clerk of the City of Riverside, California, hereby certify that an undertaking satisfactory to the council of said City guaranteeing the construction of required street improvements in this subdivision was approved and filed in my office prior to the final acceptance of this subdivision map.

IN WITNESS THEREOF I have set my hand and affixed the official Seal of the City of Riverside, State of California this 3rd day of May 1960.

Virginia J. Strohecker
City Clerk of the City of Riverside

COUNTY TAX COLLECTOR'S CERTIFICATE

I hereby certify that according to the records of this office as of this date, there are no liens against the property shown on the within map for unpaid State, County or local taxes or special assessments collected as taxes. EXCEPT TAXES NOW A LIEN BUT NOT YET PAYABLE
Dated this 20th day of April 1960. Which are estimated to be \$3,000 Bond

DANNA M. BOUER
County Tax Collector
by Ona H. Lamb, Deputy

BOND CERTIFICATE

I hereby certify that a bond in the sum of \$3,000 has been deposited with the Board of Supervisors of the County of Riverside, State of California, conditioned upon payment of all taxes, State, County, Municipal and local and all special assessments collected as taxes which at the time of filing of the annexed map with the County Recorder are a lien against the lands shown on said map but not yet payable and that said bond has been duly approved by said Board of Supervisors.

Dated this 9th day of May 1960.

G.A. Pequegnat
County Clerk and ex-officio Clerk
of the Board of Supervisors.

by M.A. Keller
Deputy

OWNERS CERTIFICATE

We hereby certify that we are the owners of or have right, title or interest in the land included in the subdivision shown on the annexed map consisting of two (2) sheets, that we are the only persons whose consent is necessary to pass a clear title to said land and we hereby consent to the making of said map and subdivision as shown within the colored border lines and we hereby offer for dedication for public use lots A & B for street purposes and for the construction and maintenance of public utilities the 5 ft., 10 ft., 5 ft. x 25 ft., & 2 1/2 ft. x 25 ft. easements and the 10 ft. x 100 ft. aerial easement.

VICTORIA KNOLLS, INC., a California corporation.

by Clara J. Judd President
by Hugh E. Murray, Jr. Secretary

STATE OF CALIFORNIA }
COUNTY OF RIVERSIDE }

on this 20th day of April, 1960, before me the undersigned, a Notary Public in and for said County and State personally appeared
Ben H. Lewis known to me to be the President, and
Hugh E. Murray, Jr. known to me to be the Secretary of the Corporation that executed the within instrument on behalf of the corporation therein named and acknowledged to me that such corporation executed the within instrument pursuant to its by-laws or a resolution of its Board of Directors.

IN WITNESS WHEREOF I have hereunto set my hand and affixed my seal.

Dolores E. Valentine
Notary Public in and for said County and State

My Commission expires 9-22-62

In accordance with Section 11587 of the Business and Professions Code, the signatures of Ruth Kerr, et al, owners of all oil and minerals as per Deed recorded October 10, 1958 in Book 2346, page 401 of Official Records of Riverside County, was omitted.

M.B. 40/4

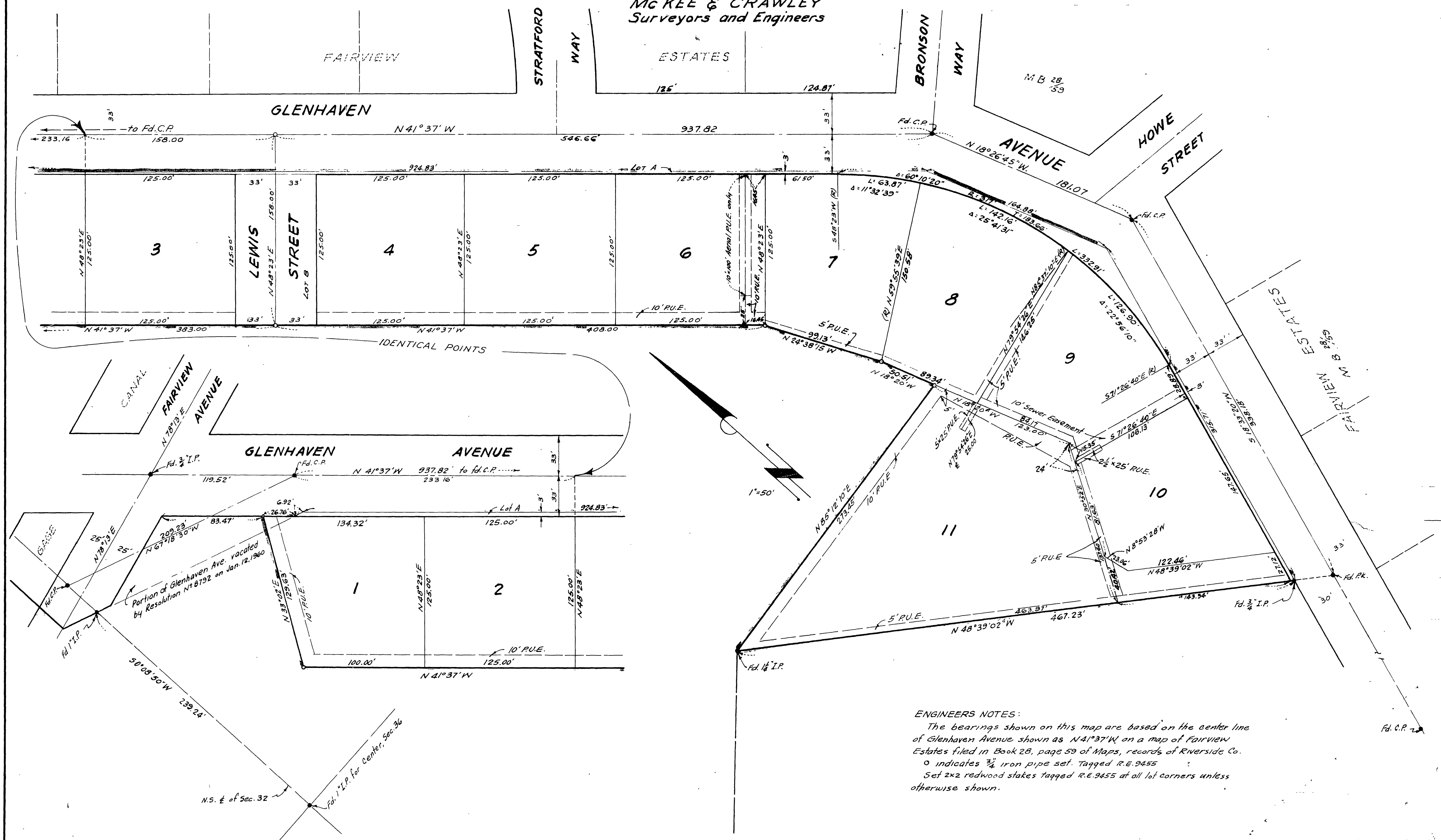
N01 MB 40/4

IN THE CITY OF RIVERSIDE GLENHAVEN KNOLLS UNIT NO. 1

A SUBDIVISION OF PORTIONS OF THE N.E. 1/4 AND THE S.E. 1/4 OF SECTION 36,
T.2S., R.5W., S.B.B. & M.

OCTOBER 1959. SCALE: 1" = 50'

Mc KEE & CRAWLEY
Surveyors and Engineers



ENGINEERS NOTES:
 The bearings shown on this map are based on the center line of Glenhaven Avenue shown as N 41° 37' W on a map of Fairview Estates filed in Book 28, page 59 of Maps, records of Riverside Co.
 o indicates 3/4" iron pipe set. Tagged R.E. 9455
 Set 2x2 redwood stakes tagged R.E. 9455 at all lot corners unless otherwise shown.

M.B. 40/5

M.B. 40/5

1101 MR 40/5