

IN THE CITY OF RIVERSIDE, CALIFORNIA

PALM VIEW ESTATES

BEING A SUBDIVISION OF A PORTION OF THE S 1/2 OF THE S 1/2 OF THE SE 1/4 OF SECTION 32 T.2S., R.5W., S.B.B.&M.

FILED
May 25 1960

No. _____ at 10:30 A.M.
Jack A. Koss
County Recorder
by O.A. V. Deputy
Fec 97.00
Filed by County Clerk

M.B. 40/14

BY

ALBERT A. WEBB ASSOCIATES

CIVIL ENGINEERS
January 1960

We hereby certify that we are the owners of, or have some right, title or interest in the land included within the subdivision shown on the annexed map; that we are the only persons whose consent is necessary to pass a clear title to said land, and we hereby consent to the making and filing of said subdivision and map as shown within the colored border line; and we hereby offer for dedication to public use for street purposes, Lots A to D inclusive, and for storm drain purposes Lot E, and for construction and maintenance of public utilities the public utility easements designated as "5' P.U.E." and "10' P.U.E." and for drainage purposes the easements designated as "10' Drainage Easement."

Le Roy J. Flory

Ruth M. Flory

I hereby certify that the subdivider named on this map has deposited with the Water Department of the City of Riverside, sufficient funds to cover the cost of installing all necessary fire hydrants, together with all water mains and laterals to the curb line on all streets shown on this map; and that all public utility easements shown on this map are sufficient for all requirements of the Electric Light and Water Department of the City of Riverside and for the Department of Public Utilities of said City.

Dated May 12, 1960.

Joseph P. Koss
Superintendent of Light and Water
Departments of the City of Riverside

I hereby certify that according to the records of this office as of this date, the property shown on this map is not subject to any special assessments, bonds, and/or liens which have not been paid in full. This certificate does not include any special assessments, the bonds of which have not yet become a lien upon said property.

Dated 5, 1960.

K. C. G. Knight
City Treasurer

I hereby certify that according to the records of this office the property shown on this map is not subject to any special assessments which have not been paid in full.

Dated May 12, 1960.

J. W. G. ...
Street Superintendent

I hereby certify that according to the records of this office as of this date, there are no liens against the property shown on this map for unpaid State, County, Municipal or local taxes, or special assessments collected as taxes, except taxes and special assessments now a lien, but not yet payable which are estimated at \$ 1000.00

Dated May 12, 1960.

Donna M. Bouer
County Tax-Collector
By ... Deputy

I hereby certify that this map was approved by the Riverside City Planning Commission at its meeting held on the 4th day of February, 1960.

R. James ...
Planning Director

RESOLVED-That this map consisting of two (2) sheets, be and the same is hereby accepted as the official map of PALM VIEW ESTATES that the streets and public utility easements hereon are hereby accepted as public streets and public utility easements and the City Clerk is hereby authorized and directed to attest said map by signing her name thereto as City Clerk of the City of Riverside, and to affix the seal of the City thereto.

I hereby certify that the foregoing resolution was adopted by the Mayor and Council of the City of Riverside this ... day of ..., 1960.

...
City Clerk of the City of
Riverside, California

I hereby certify that I am a Registered Civil Engineer of the State of California, and this map, consisting of two sheets, correctly represents a survey made under my supervision during December 1959 and that all monuments shown hereon actually exist and their positions are correctly shown or shall be in position not later than December 1960.

Dated Feb 23RD, 1960.

Ernest N. Webb
Registered Civil Engineer No. 9876

I hereby certify that I have examined the within map, that the subdivision shown hereon is substantially the same as it appeared on the tentative map and any approved alterations thereof, that all provisions of Chapter 128 (Subdivision Map Act), Statutes of California 1943, and of Ordinance No. 1328 of the City of Riverside, California, and all amendments thereto, have been complied with, that plans and specifications for drain, drainage, sewer and drainage works sufficient to protect all lots in said subdivision from flood or overflow have been approved by me, that all easements for sewers and drains shown on said map are correct in form and contents, and are approved, and I am satisfied that this map is technically correct.

Dated May 13, 1960

...
Director of Public Works

State of California } S.S.
County of Riverside }

I, V.J. Strohecker, City Clerk of the City of Riverside, California, hereby certify that an undertaking satisfactory to the council of said City, guaranteeing the construction of required street improvements in this subdivision was approved and filed in my office prior to the final acceptance of this subdivision map.

IN WITNESS WHEREOF, I have hereunto set my hand and affixed the official seal of the City of Riverside, California this 12th day of May, 1960.

...
City Clerk of the City of
Riverside, California

I hereby certify that a bond in the sum of \$ 1,000.00 has been filed with the Board of Supervisors of the County of Riverside, State of California, conditioned upon the payment of all taxes, State, County, municipal or local and all special assessments collected as taxes, which at the time of filing this map with the County Recorder are a lien against said property but not yet payable, and said bond has been duly approved by said Board of Supervisors.

Dated 23 MAY, 1960.

Gordon A. Pequegnat
County Clerk and ex-officio clerk
of the Board of Supervisors
By M. A. ... Deputy

State of California } S.S.
County of Riverside }

On this 4th day of May, 1960, before me the undersigned, Notary Public in and for said County and State, personally appeared Le Roy J. Flory and Ruth M. Flory known to me to be the persons who executed the within instrument and they acknowledged to me that they executed the same.

WITNESS my hand and official seal.

...
Notary Public in and for said County and State

My Commission expires 11-24-63

State of California } S.S.
County of Riverside }

On this ... day of ..., 1960, before me the undersigned, Notary Public in and for said County and State, personally appeared ... and ... known to me to be the ... and ... respectively of the PACIFIC COAST TITLE CO. OF RIVERSIDE, the corporation that executed the within instrument and they acknowledged to me that such corporation executed the same as Trustee.

WITNESS my hand and official seal.

...
Notary Public in and for said County and State

My Commission expires ...

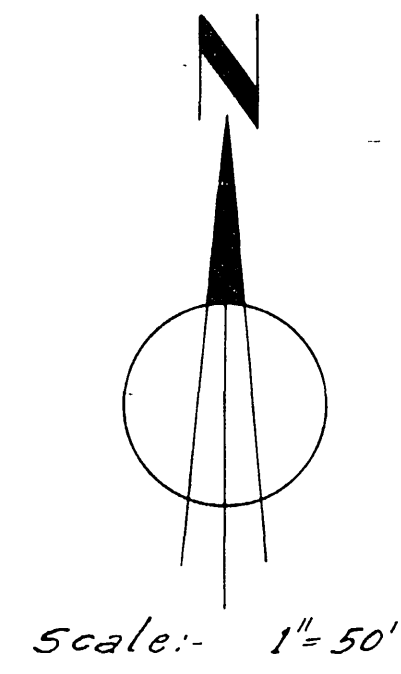
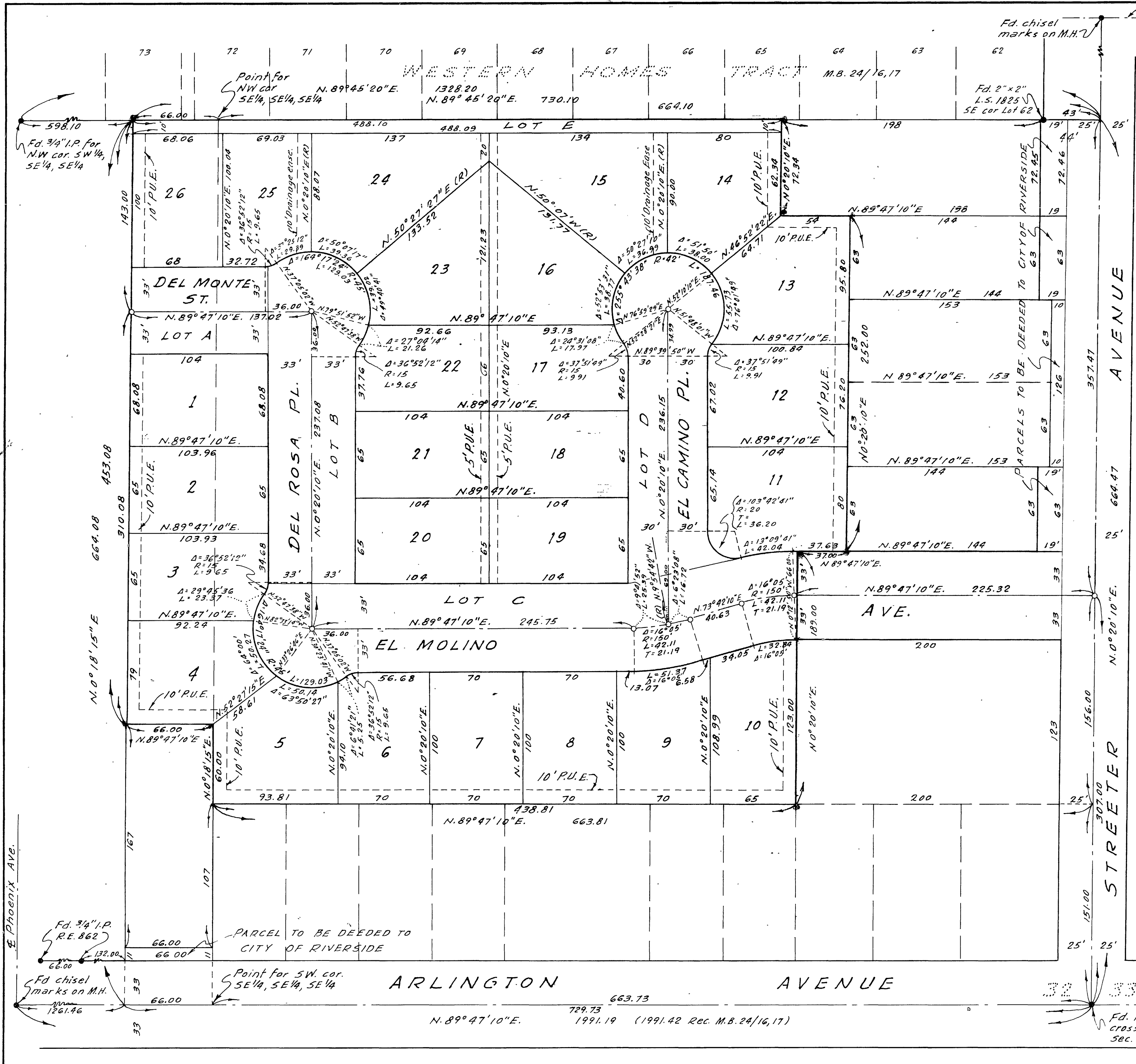
NO 1

MB 40/14

M.B. 40/14

PALM VIEW ESTATES
Being a subdivision of a portion
of the 5/2 of the 5/2 of the SE 1/4
of Section 32, T2S, R5W, S.B.B.&M.

M.B.40/15



ENGINEER'S NOTES:-
 Basis of Bearings is the centerline of Streeter Avenue taken as N. 0° 20' 10" E. as same is shown on Map of WESTERN HOMES TRACT in Book 24 at pages 16-17, Records of Riverside County, California.
 Found monuments as noted at all point shown thus. ●
 Set 3/4" I.P. tagged R.E. 9876 at all points shown thus ○
 Set 2"x2" Redwood stakes tagged R.E. 9876 at all lot corners unless otherwise noted.

~BY~
ALBERT A. WEBB ASSOCIATES
 CIVIL ENGINEERS
 January 1960

Fd. P.K. nail with cross ties for SE cor. Sec. 32

M.B. 40/15

N01

MB40/15