

UNIVERSITY HIGHLANDS NO. 4 UNIT NO. 1

BEING A SUBDIVISION OF A PORTION OF NORTH 1/2 OF SECTION 20, T. 2 S. R. 4 W., S. B. B. AND M.

APRIL 1960

SCALE 1"=60'

J. F. DAVIDSON, C. E.

FILED
June 10, 1960
9:01 A.M.

Jack A. Ross
County Recorder
By D. A. Reed
Deputy
Fee \$9.00
Filed by County Clerk

M.B. 40/31

OWNERSHIP

We hereby certify that we are the owners or have some right, title or interest in the land included within the subdivision shown hereon, that we are the only persons whose consent is necessary to pass a clear title to said land; that we consent to the making and recording of said map and subdivision as shown within the colored border line and that we here by offer for dedication for public use for street purposes lots "A" to "F" inclusive and for the construction and maintenance of all public utilities, the public utility easements are designated "Water" "Sewer" "Gas" "ELEC" "12" x 25" P.U.E." "Aerial P.U.E." We also offer for dedication to the County of Riverside lots G, H, I. We also offer for dedication for the construction and maintenance of sanitary sewers the sanitary sewer easement across lots 43 and 40 U.L.U. INC. a Corporation.

By John W. Stephens President
John P. Monahan Secretary

TITLE INSURANCE & TRUST CO. a corporation, trustee under Deed of Trust

[Signature]
Assistant Secretary

STATE OF CALIFORNIA }
COUNTY OF RIVERSIDE } S.S.

On June 1, 1960, before me, the undersigned, a Notary Public in and for said County and State, personally appeared JOHN N. STEPHENS and JOHN P. MONAHAN, known to me to be the President and Secretary of U. L. U. INC. the Corporation that executed the within instrument, known to me to be the persons who executed the within instrument on behalf of the Corporation therein named, and acknowledged to me that such Corporation executed the same.

WITNESS my hand and official seal [Signature]
Notary Public in and for said County & State

My commission expires Nov. 6, 1962

STATE OF CALIFORNIA }
COUNTY OF RIVERSIDE } S.S.

On this 1st day of JUNE, 1960, before me, the undersigned, a Notary Public in and for said County and State, personally appeared Jack Sites known to me to be the Assistant Secretary of TITLE INSURANCE & TRUST CO., the corporation that executed the within instrument and known to me to be the person who executed the same on behalf of the corporation therein named, and acknowledged to me that such Corporation executed the same.

WITNESS my hand and official seal [Signature]
Notary Public in and for said County and State

My commission expires Nov. 6, 1962

BOARD OF SUPERVISORS

The County of Riverside, State of California, by and through its duly authorized officers hereby approves said final map and accepts the foregoing dedications, except that the easement of lots "G", "H" and "I" is contingent on the extension and improvement of the streets, and that the sewer easement is not accepted.

Dated June 1, 1960. COUNTY OF RIVERSIDE, STATE OF CALIFORNIA
By [Signature]
Chairman of the Board of Supervisors

ATTEST:
G.A. PEQUEGNAT
County Clerk and ex-officio
Clerk of the Board of Supervisors

By M.A. Killam Deputy

COUNTY SURVEYOR

I hereby certify that I have examined this map and find it to be substantially the same as it appeared on the tentative map as filed, amended and approved by the County Planning Commission; that all provisions of the Subdivision Map Act and County Subdivision Regulations have been complied with, and that I am satisfied this map is technically correct.

Dated June 1, 1960. A.C. HEITH County Surveyor
By G. T. Worsley Deputy

COUNTY PLANNING COMMISSION

The tentative map was approved by the Riverside County Planning Commission in accordance with the requirements of law in a duly authorized meeting held the 29th day of December, 1959.

Harold J. Pearson Secretary
Riverside County Planning Commission

TAX COLLECTOR

I hereby certify that according to the records of this office as of this date, there are no liens against the property shown on the within map for unpaid State, County, Municipal or Local taxes or special assessments collected as taxes, except taxes and special assessments collected as taxes now a lien but not yet payable, which are estimated to be \$ 500.00.

Dated June 1, 1960. DONNA M. BOUER County Tax Collector
By [Signature] Deputy

TAX BOND

I hereby certify that a bond in the sum of \$ 500.00 has been executed and filed with the Board of Supervisors of the County of Riverside, California, conditioned upon the payment of all taxes, State, County, Municipal or Local, and all special assessments collected as taxes which at the time of filing of this map with the County Recorder are a lien against said property but not yet payable and said bond has been duly approved by said Board of Supervisors.

Dated June 1, 1960. G.A. PEQUEGNAT
County Clerk and ex-officio
Clerk of the Board of Supervisors
By M.A. Killam Deputy

CIVIL ENGINEER

I hereby certify that I am a Registered Civil Engineer of the State of California and that this map consisting of three (3) sheets correctly represents a survey made under my supervision during April of 1960, that all monuments shown hereon actually exist and their positions are correctly shown, or will be in place one year from date of recording of this map.

George E. McCarty
Registered Civil Engineer No. 10688

M.B. 40/31

No 2 MB 40/31

40/32
M.B. 40/32

IN THE COUNTY OF RIVERSIDE

UNIVERSITY HIGHLANDS NO. 4 UNIT NO. 1

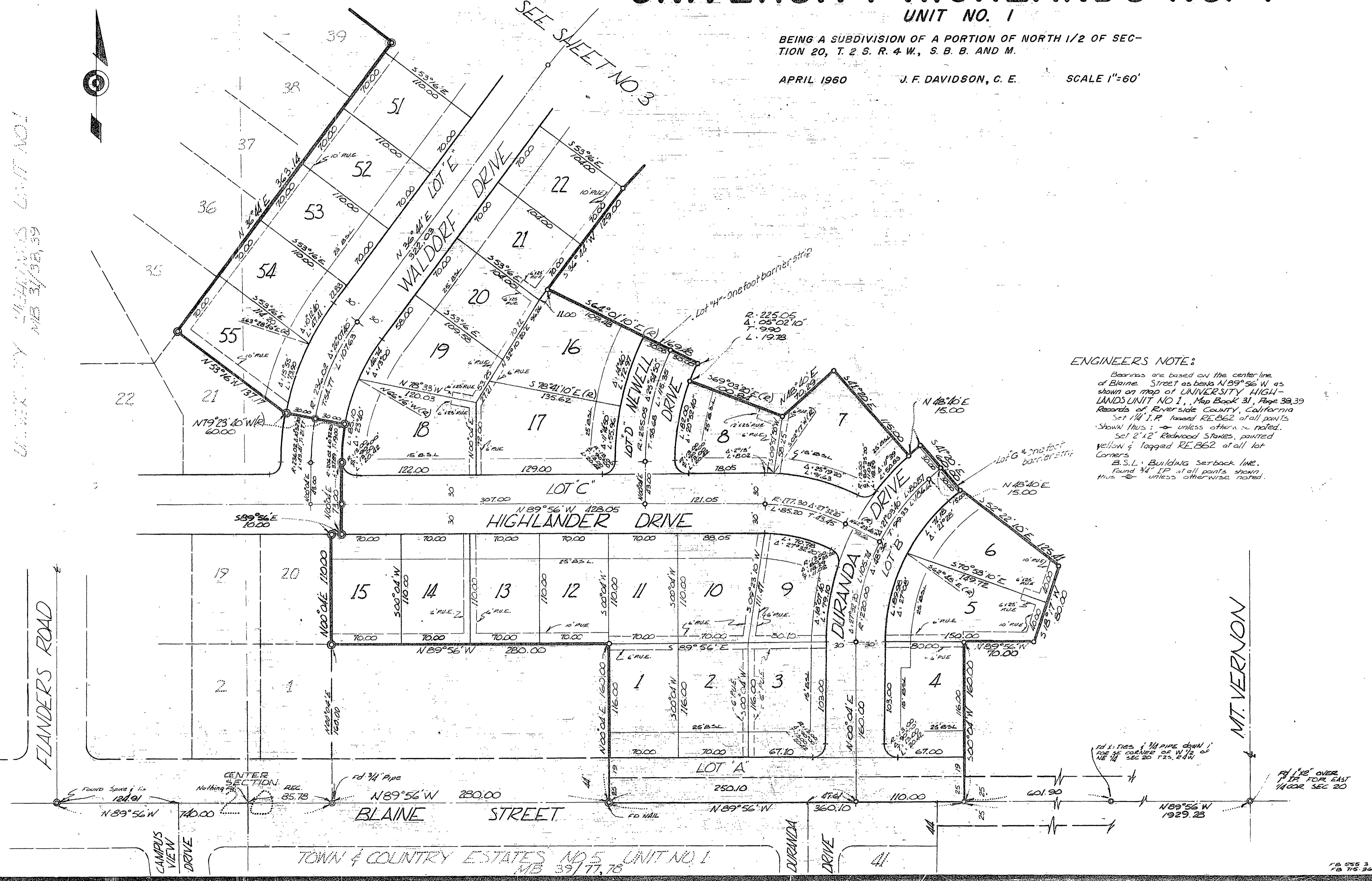
BEING A SUBDIVISION OF A PORTION OF NORTH 1/2 OF SECTION 20, T. 2 S. R. 4 W., S. B. B. AND M.

APRIL 1960 J. F. DAVIDSON, C. E. SCALE 1"=60'



UNIVERSITY HIGHLANDS UNIT NO. 1
MB 39/28, 39

SEE SHEET NO. 3



ENGINEERS NOTE:

Bearings are based on the center line of Blaine Street as being N 89° 56' W as shown on map of UNIVERSITY HIGHLANDS UNIT NO. 1, Map Book 31, Page 39, 39 Records of Riverside County, California Set 144 I.P. based RE 862 at all points shown thus: — unless otherwise noted. Set 2" x 2" Redwood Stakes, painted yellow & tagged RE 862 at all lot corners.

B.S.L. Building Setback Line. Found 3/4" IP at all points shown thus: — unless otherwise noted.

Found 1" x 1/2" OVER 1/2" PIPE DOWN 1/2" FOR CORNER OF W 1/2 OF NE 1/4 SEC 20 T. 2 S. R. 4 W.

Found 3/4" OVER 1/2" PIPE EAST 1/4 COR SEC 20

M.B. 40/32

NO. 2 MB 40/32

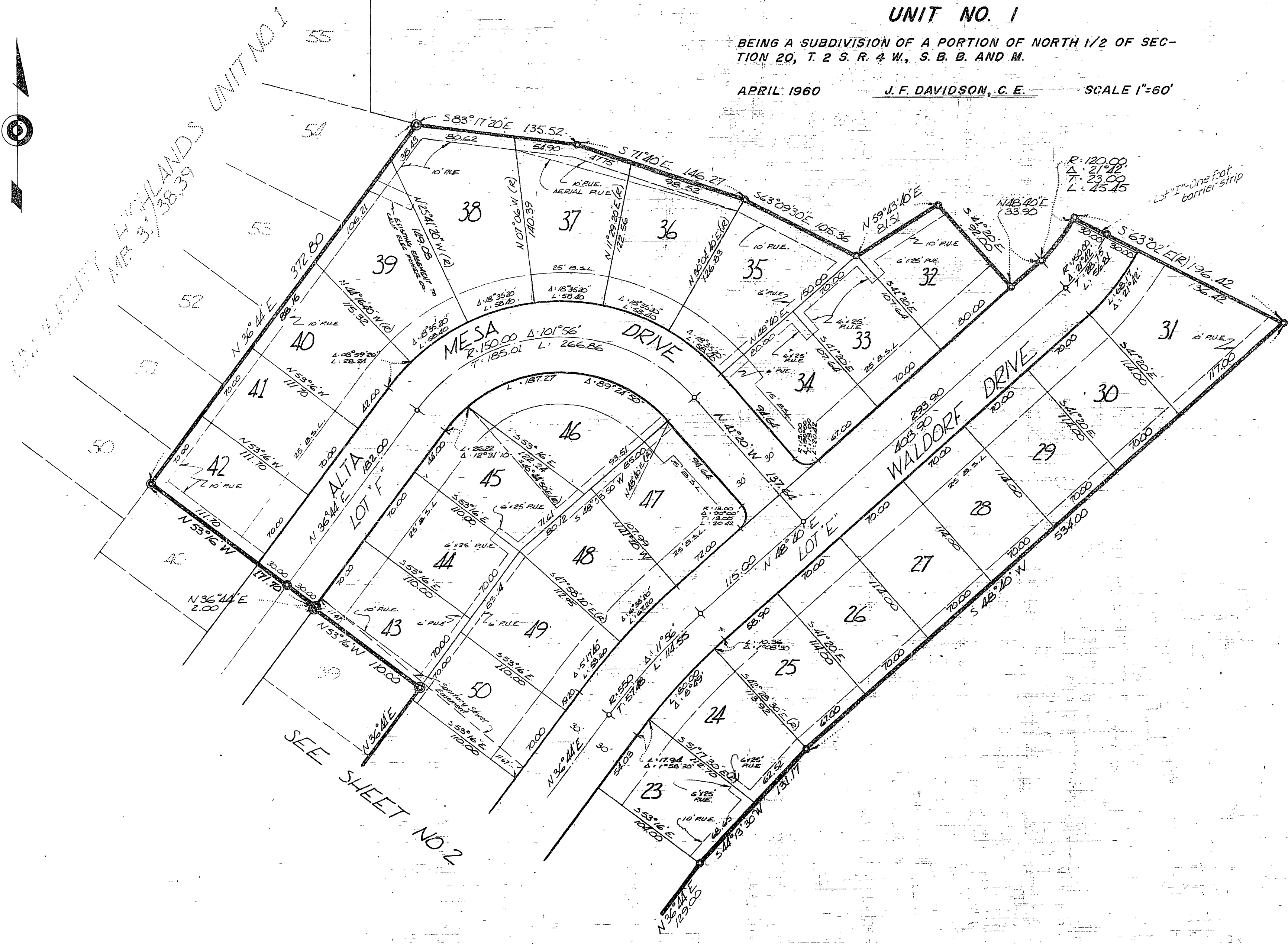
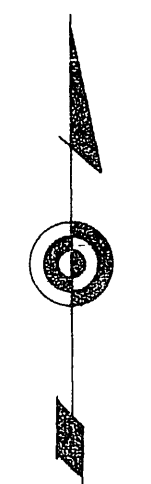
40/33
M.B. 40/33

IN THE COUNTY OF RIVERSIDE

UNIVERSITY HIGHLANDS NO. 4 UNIT NO. 1

BEING A SUBDIVISION OF A PORTION OF NORTH 1/2 OF SECTION 20, T. 2 S. R. 4 W., S. B. B. AND M.

APRIL 1960 J. F. DAVIDSON, C. E. SCALE 1"=60'



NOTE:
 Set 1/4" I.P. tagged R.E. 862 at all points shown thus. o
 unless otherwise noted.
 Set 2x2 Redwood Stakes painted yellow and
 tagged R.E. 862 at all lot corners
 found 3/4 I.P. at all points shown thus. ©
 unless otherwise noted.

M.B. 40/33

NO 2 MB 40/33