

IN THE COUNTY OF RIVERSIDE

# CAMPUS ESTATES

BEING A SUBDIVISION OF A PORTION OF THE N. W. 1/4 OF THE S. W. 1/4 OF SECTION 21, T. 2 S. R. 4 W., S. B. B. AND M.

MAY 1960

SCALE 1"=50'

J. F. DAVIDSON, C. E.

SHEET 1 OF 2 SHEETS

**FILED**  
On Aug. 7, 1960  
At 4:25 P.M.

Jack A. Ross  
County Recorder  
By O. A. Broun  
Deputy  
fee \$7.00  
No  
Filed by county clerk  
P.T.I. Co.

### OWNERSHIP

We hereby certify that we are the owners of or have some right, title or interest in the land included within the subdivision shown hereon; that we are the only persons whose consent is necessary to pass a clear title to said land; that we consent to the making and recording of said map and subdivision as shown within the colored border line and that we hereby offer for dedication for public use for street purposes lots "A" to "E" inclusive and for the construction and maintenance of all public utilities, the public utility easements are designated "G.P.U.E." and "I.P.U.E." We also offer for dedication to the County of Riverside Lot "D".

SIGURD DEVELOPMENTS NO. 1, a Corporation

By Sigurd C. Hanson President and Dexter A. McClung Secretary

PIONEER TITLE INSURANCE COMPANY, a California Corporation, trustee under Deeds of Trust

By [Signature] Assistant Secretary

ARLYN DEVELOPMENT CORP. a corporation

By Sigurd C. Hanson President and Dexter A. McClung Secretary

On July 19, 1960, before me, the undersigned, a Notary Public in and for said County and State, personally appeared Sigurd C. Hanson, and Dexter A. McClung, known to me to be the president and secretary of SIGURD DEVELOPMENTS NO. 1, the corporation that executed the within instrument, known to me to be the persons who executed the within instrument, on behalf of the corporation, therein named, and acknowledged to me that such corporation executed the same.

WITNESS my hand and official seal.  
[Signature]  
Notary Public in and for said County & State  
My commission expires 11-6-62

STATE OF CALIFORNIA } s.s.  
COUNTY OF RIVERSIDE }

On July 19, 1960, before me, the undersigned, a Notary Public in and for said County and State, personally appeared Jack A. Stiles, known to me to be the assistant secretary of PIONEER TITLE INSURANCE COMPANY the corporation that executed the within instrument, known to me to be the person who executed the within instrument, on behalf of the corporation, therein named, and acknowledged to me that such corporation executed the same.

WITNESS my hand and official seal.  
[Signature]  
Notary Public in and for said County & State  
My commission expires 11-6-62

### BOARD OF SUPERVISORS

The County of Riverside, State of California, by and through its duly authorized officers hereby approves said final map and accepts the foregoing declarations. Except that the acceptance of lot "D" is contingent on the extension and improvement of the street.

Dated August 7, 1960 COUNTY OF RIVERSIDE, STATE OF CALIFORNIA

By [Signature] Chairman of the Board of Supervisors

ATTEST  
G.A. PEQUEGNAT  
County Clerk and ex-officio  
Clerk of the Board of Supervisors

By [Signature] Deputy

### COUNTY SURVEYOR

I hereby certify that I have examined this map and find it to be substantially the same as it appeared on the tentative map as filed, amended and approved by the County Planning Commission; that all provisions of the Subdivision Map Act and County subdivision regulations have been complied with; and that I am satisfied this map is technically correct.

Dated July 26, 1960 A.E. KEITH, County Surveyor

By [Signature] Deputy

### COUNTY PLANNING COMMISSION

The tentative map was approved by the Riverside County Planning Commission in accordance with the requirements of law in a duly authorized meeting held the 20th day of June, 1960.

[Signature] Secretary  
Riverside County Planning Commission

STATE OF CALIFORNIA } s.s.  
COUNTY OF RIVERSIDE }

On July 29, 1960, before me, the undersigned, a Notary Public in and for said County and State, personally appeared Sigurd C. Hanson and Dexter A. McClung, known to me to be the president and secretary respectively, of ARLYN DEVELOPMENT CORP., the corporation that executed the within instrument, and known to me to be the persons who executed the within instrument on behalf of the corporation therein named, and acknowledged to me that said corporation executed the same.

WITNESS MY HAND AND SEAL  
[Signature]  
Notary Public in and for said County & State  
My Commission expires April 13, 1962

### TAX COLLECTOR

I hereby certify that according to the records of this office as of this date, there are no liens against the property shown on the within map for unpaid State, County, Municipal or Local taxes or special assessments collected as taxes, except taxes and special assessments collected as taxes now a lien but not yet payable, which are estimated to be \$ 1,000.00.

Dated July 7, 1960 CONNIE M. BOUER, County Tax Collector

By [Signature] Deputy

### TAX BOND

I hereby certify that a bond in the sum of \$ 1,000.00 has been executed and filed with the Board of Supervisors of the County of Riverside, California, conditioned upon the payment of all taxes, State, County, Municipal or Local, and all special assessments collected as taxes which at the time of filing of this map with the County Recorder are a lien against said property but not yet payable and said bond has been duly approved by said Board of Supervisors.

Dated August 7, 1960 G.A. PEQUEGNAT

County Clerk and ex-officio  
Clerk of the Board of Supervisors

By [Signature] Deputy

### CIVIL ENGINEER

I hereby certify that I am a Registered Civil Engineer of the State of California and that this map consisting of two (2) sheets correctly represents a survey made under my supervision during May of 1960 that all monuments shown hereon actually exist or will be in place within one year of the recording of this map.

J. F. Davidson  
Registered Civil Engineer No. 362

MB 40/55

MB. 40/55

MB. 40/55



IN THE COUNTY OF RIVERSIDE

# CAMPUS ESTATES

BEING A SUBDIVISION OF A PORTION OF THE N.W. 1/4 OF THE S.W. 1/4 OF SECTION 21, T 2 S. R. 4 W., S. B. B. AND M.

MAY 1960

J F DAVIDSON, C. E.

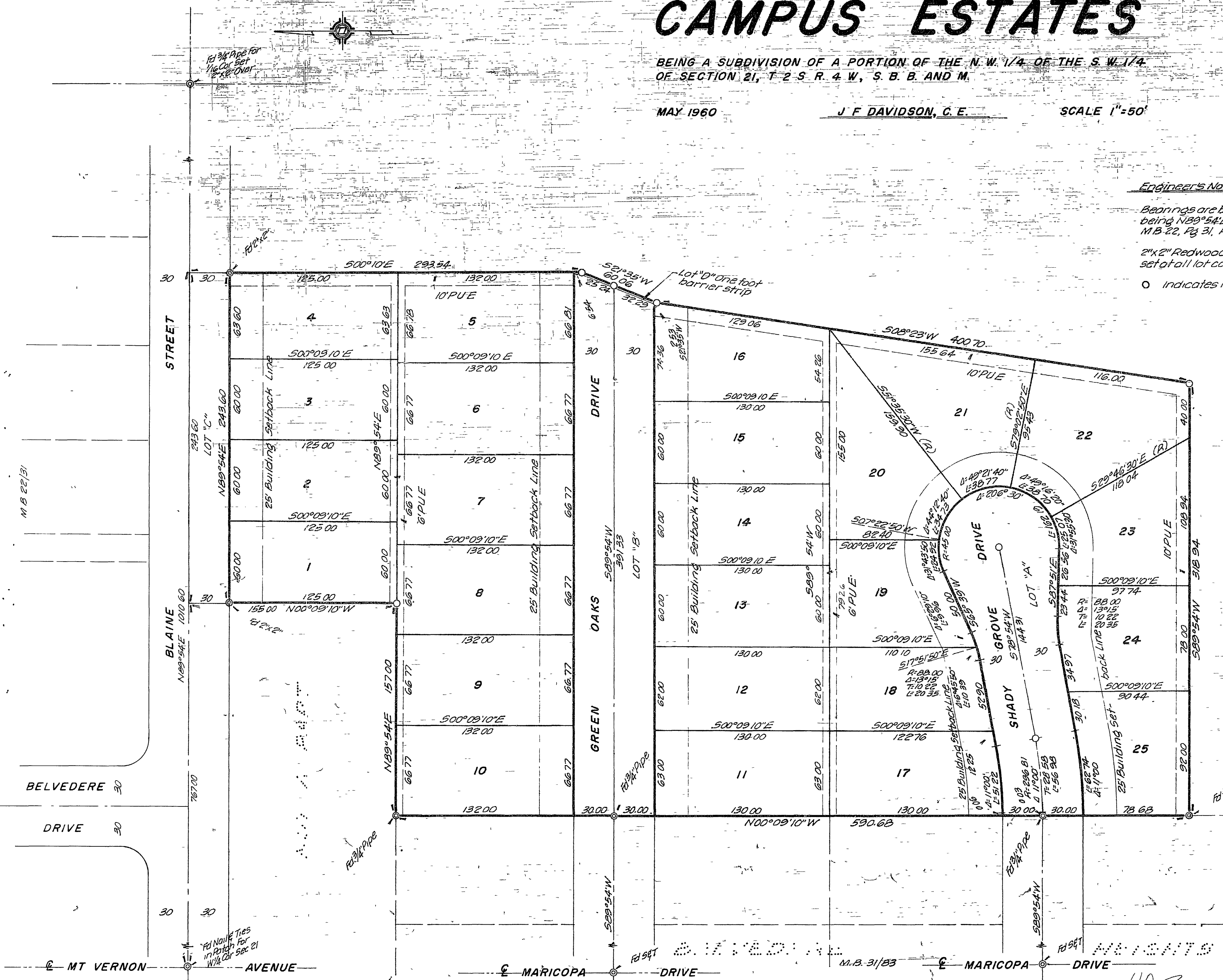
SCALE 1"=50'

### Engineer's Note

Bearings are based on the center line of BLAINE STREET being N89°54'E as shown on map of "BELVEDERE HEIGHTS" M.B. 22, Pg. 31, Records of Riverside County California

2"x2" Redwood Stakes, painted yellow and tagged R E 862 set at all lot corners.

○ indicates 1/4" Pipe tagged R E 862 set



M.B. 40 / 56

M.B. 40 / 56

MB 40/56