

40/70  
M.B. 40/70

IN THE COUNTY OF RIVERSIDE

# TRACT NO. 2079

BEING A SUBDIVISION OF PORTION OF N. 1/2 OF  
N.W. 1/4, OF SECTION 28, T. 2 S., R. 4 W., S.B.B. & M.

ALBERT A. WEBB ASSOCIATES  
Civil Engineers  
APRIL 1960

**FILED**  
AUG 23 1960  
Jack A. Ross  
O.A. Wheat  
Fee \$7.00  
Filed at 4:35 PM  
By County Clerk

We hereby certify that we are the owners of, or have some right, title or interest in and to the land included within the subdivision shown upon the annexed map consisting of two (2) sheets, that we are the only persons whose consent is necessary to pass a clear title to said land, and we hereby consent to the making and filing of this map and subdivision as shown within the colored border line, and we hereby offer for dedication to public use for street purposes the areas designated as lots A to C inclusive, and for the construction and maintenance of all public utilities, the public utility easements designated as 6' P.U.E., 10' P.U.E., 6' x 30' P.U.E., 10' x 30' P.U.E., and 10' Aerial P.U.E. and we offer for dedication to the County of Riverside Lots D to F.

I hereby certify that according to the records of this office as of this date there are no liens against the real property shown on the annexed map for unpaid State, County, Municipal or local taxes or special assessments collected as taxes, except taxes or special assessments now a lien but not yet payable which are estimated to be \$1,000.00.

I hereby certify that I have examined the within map, that the subdivision shown hereon is substantially the same as it appeared on the tentative map and any approved alterations thereof, that all provisions of State Law and County Ordinance No. 460 have been complied with and I am satisfied that this map is technically correct.

Dated 8-1 1960

Doris M. Boder  
County Tax Collector

By M. C. White  
Deputy

Dated August 15 1960

A. C. Kerth  
County Surveyor

By C. T. Woodley Deputy

QUALITY LAND CO; a Calif corporation  
Montgomery Ross Fisher W. William Fortney Secretary  
SECURITY TITLE INSURANCE CO. a corporation, Trustee  
Robert E. Blau Vice President  
HACIENDA GARDENS, a Calif. Corporation  
PACIFIC COAST TITLE CO. a corporation, Trustee  
John Barber Secretary

The County of Riverside, State of California, by and through its duly authorized officers hereby approves this final map and accepts the foregoing dedications except Lots D to F inclusive which are accepted contingent upon the extension an improvement of the streets.

Dated August 22 1960

County of Riverside, State of California

ATTEST  
G. A. PERUEGNAT  
County Clerk and ex-officio  
Clerk of the Board of Supervisors

By Paul J. ...  
Chairman Board of Supervisors

By M. C. White Deputy

Dated APRIL 26<sup>TH</sup> 1960

Ernest N. Webb  
Registered Civil Engineer No. 9876

The tentative map (2023) was approved by the Riverside County Planning Commission in accordance with the requirements of Law in duly authorized meeting held the 8 day of March 1960

Walter J. Evensen  
Secretary

State of California } s.s.  
County of Riverside }  
On this 22<sup>nd</sup> day of July 1960, before me, the undersigned, a Notary Public in and for said County and State, personally appeared Montgomery Ross Fisher and W. William Fortney known to me to be the President and Secretary respectively of the corporation that executed the within instrument and they acknowledged to me that such corporation executed the same.

WITNESS my hand and official seal.

Helene Klewin  
Notary Public in and for said County and State

My Commission Expires 11-24-63

I hereby certify that a bond in the sum of \$1,000.00 has been executed and filed with the Board of Supervisors of the County of Riverside, State of California conditioned upon the payment of all taxes, State, County, Municipal or local taxes and all special assessments collected as taxes which at the time of filing this map with the County Recorder are a lien against said property but not yet payable, and said bond has been duly approved by said Board of Supervisors.

Dated August 22 1960

G. A. PERUEGNAT  
County Clerk and ex-officio  
Clerk of the Board of Supervisors

By M. C. White Deputy

State of California } s.s.  
County of Riverside }  
On this 22<sup>nd</sup> day of August 1960, before me, a Notary Public in and for said County and State, personally appeared Robert E. Blau and W. William Fortney known to me to be the Vice President and Assistant Secretary respectively of the corporation that executed the within instrument and known to me to be the persons who executed the same on behalf of the corporation therein named and acknowledged to me that such corporation executed the within instrument as trustee.

WITNESS my hand and official seal.

Helene Klewin  
Notary Public in and for said County and State

My Commission expires 11-24-63

State of California } s.s.  
County of Riverside }  
On this 12<sup>th</sup> day of August 1960, before me, the undersigned, a Notary Public in and for said County and State, personally appeared John Barber and Robert E. Blau known to me to be the Secretary and Vice President respectively of the corporation that executed the within instrument and they acknowledged to me that such corporation executed the same as Trustee.

WITNESS my hand and official seal.

Helene Klewin  
Notary Public in and for said County and State

My Commission Expires 11-24-63

State of California } s.s.  
County of Riverside }  
On this 12<sup>th</sup> day of August 1960, before me, a Notary Public in and for said County and State, personally appeared John Barber and Robert E. Blau known to me to be the Secretary and Vice President respectively of the corporation that executed the within instrument and they acknowledged to me that such corporation executed the same.

WITNESS my hand and official seal.

Helene Klewin  
Notary Public in and for said County and State

My Commission Expires November 24<sup>th</sup> 1963

State of California } s.s.  
County of Riverside }  
On this 12<sup>th</sup> day of August 1960, before me, the undersigned, a Notary Public in and for said County and State, personally appeared John Barber and Robert E. Blau known to me to be the Vice President and Secretary respectively of the corporation that executed the within instrument and they acknowledged to me that such corporation executed the same as Trustee.

WITNESS my hand and official seal.

Helene Klewin  
Notary Public in and for said County and State

My Commission Expires 11-24-63

I, Ernest N. Webb, hereby certify that the final monuments were set under my supervision and that they do not comply in all respects with the monuments called for on map of Tract No. 2079 in that 3/4" Iron Pipes, 30" long, tagged R.C.E. No. 9876 were set at certain lot corners within said tract.

I further certify that I have filed with the Riverside County Surveyor's Office a map showing those corners at which a monument other than that called for on the record map was set. (County Surveyors File No. 746-111)

**MB 40/70**

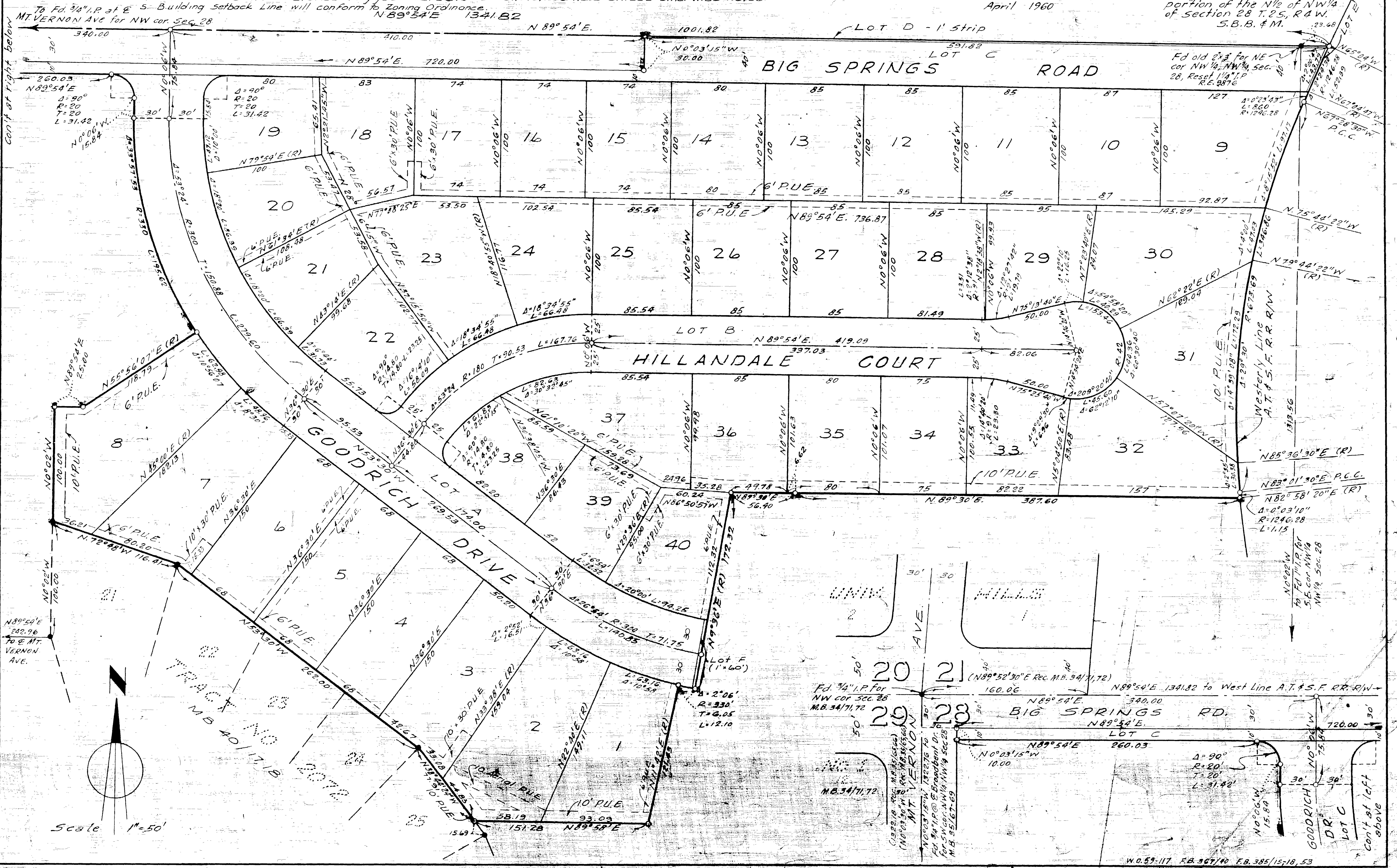
M.B. 40/70

Sheet 2 of 2 Sheets  
**TRACT NO. 2079**  
Being a subdivision of a portion of the NW 1/4 of section 28 T.2S., R.4W. S.B.B. & M.

BY  
**ALBERT A. WEBB ASSOCIATES**  
CIVIL ENGINEERS  
April 1960

**ENGINEER'S NOTES:**

1. Basis of Bearings is the north easterly boundary line of Lots 22-24 of Tract No 2072 taken as N 53° 30' W, as same is shown on map of TRACT No 2072 recorded in Book 40 of Maps at pages 17, 18 thereof, records of Riverside County, Calif.
2. Found 1/4" I.P. tagged R.E. 9876 at all points shown unless otherwise noted.
3. Set 1/4" I.P. tagged R.E. 9876 at all points shown unless otherwise noted.
4. Set 2" x 2" Redwood stakes tagged R.E. 9876 at all lot corners unless otherwise noted.
5. Building setback Line will conform to Zoning Ordinance.



M.B. 40/71

M.B. 40/71

MB 40/71

W.O. 53-17, F.B. 367/40, F.B. 385/15-18, 53