

STATE OF CALIFORNIA } ss.
 COUNTY OF RIVERSIDE }
 On this 8th day of OCTOBER 1960, before me the undersigned,
 a Notary Public in and for said County and State, personally appeared
 W. HAROLD KNEHANS known to me to be the Vice President
 and RONALD W. AYERS known to me to be the Assistant Secretary
 of the Corporation that executed the within instrument and
 known to me to be the persons who executed the same on
 behalf of the Corporation therein named and acknowledged
 to me that such Corporation executed the same.
 WITNESS my hand and official seal.
 DOROTHY MERRITT
 Notary Public in and for said County and State.
 My Commission expires 8/13/61

IN THE CITY OF RIVERSIDE TRACT NO. 2145

Filed for Record this 7th day of Oct. 1960.
 at 1:50 PM, in Book 41 at Page 5
 at the request of County Clerk
 JACK A. ROSS
 County Recorder
 By D. A. Kellas Deputy
 Fee \$5.00

Being a Subdivision of a Portion of Lot 4 in Block 80 of
 ARLINGTON HEIGHTS as Shown by Map on file in Book 11 of
 Maps, Pages 20 & 21 Records of San Bernardino County California

April 1960 Scale 1in=100ft
 McKEE and CRAWLEY - Surveyors & Engineers

DIRECTOR OF PUBLIC WORKS

I hereby certify that I have examined the annexed map, that
 the subdivision shown thereon is substantially the same as it
 appeared on the tentative map and any approved alterations
 thereof, that all provisions of Chapter 128 (Subdivisions Map
 Act), Statutes of California, 1943, and of Ordinance No 1328
 of the City of Riverside, California, and all amendments
 thereto have been complied with; that plans and specifications
 for drains, drainage, sewer and drainage works sufficient to
 protect all lots in said subdivision from flood or overflow
 have been approved by me; that all easements for sewers
 and drains shown on said map are correct in form and
 contents, and are approved and I am satisfied that this map
 is technically correct

Dated this 14th day of October 1960

D. M. Atwell
 Director of Public Works City of Riverside

PLANNING COMMISSION

I hereby certify that this Map is as approved by the Riverside City
 Planning Commission at its meeting held on the 22nd day of
 September 1960.

P. James Thurman
 Director of Planning City of Riverside

STREET SUPERINTENDENT

I hereby certify that according to the records of this office, the
 property shown on this map, is not subject to any special ass-
 essments which have not been paid in full

Dated this 3rd day of October 1960

E. M. Rossi

SUPERINTENDENT OF LIGHT AND WATER DEPT.

I hereby certify that the subdivider named on this map has
 deposited with the Water Dept. of the City of Riverside sufficient
 funds to cover the cost of installing all necessary fire hydrants
 together with all water mains and laterals to the curb line on the
 streets shown on said map; and that all public utility easements
 shown on this map are sufficient for all requirements of the Electric
 Light and Water Departments of the City of Riverside and for the
 Department of Public Utilities of said City

Dated this 11th day of October 1960

E. M. Rossi
 Superintendent of the Light & Water Department City of Riverside

CITY TREASURER

I hereby certify that according to the records of this office as of
 this date, the property shown on this map is not subject to any
 special assessments, bonds, and or liens which have not been paid
 in full. This certificate does not include any special assessments
 the bond of which have not become a lien upon said property.

Dated this 23rd day of October, 1960

H. S. Wright
 City Treas. City of Riverside

ENGINEER

I hereby certify that I am a Registered Civil Engineer in
 the State of California and that this map consisting of
 one (1) Sheet, correctly represents a survey made under
 my supervision during May 1960, that all monuments shown
 hereon actually exist and their positions are correctly shown

George O. Crawley
 Registered Engineer (No 9455)

TAX COLLECTOR

I hereby certify that according to the records of this office as
 of this date, there are no liens against the property shown on
 this map for unpaid State, County or local taxes or special
 assessments collected as taxes, except taxes and special assessments
 now a lien, but not yet payable which are estimated at \$500.00

Dated this 5th day of October 1960
 Donna M. Bauer County Tax Collector

D. M. Strader Deputy

Engineers Notes

The basis of bearings shown on this map is the center line of
 Dickens St Shown as S77° 53' 05" E on Map filed in M.B. 38
 pg. 91 Records of Riverside County, Calif.
 * Indicates monuments found as indicated
 o Indicates monuments set tagged
 2x2 Redwood Stakes tagged "R.E. 9455" set at all lot corners.

CITY CLERK

I, Virginia J. Strohecker, City Clerk of the City of Riverside, Calif.
 hereby certify that an undertaking satisfactory to the Council of said
 City guaranteeing the construction of required street improvements
 in this subdivision was approved and filed in my office prior to the
 final acceptance of this subdivision map.

IN WITNESS THEREOF, I have hereunto set my hand and affixed
 the official seal of the City of Riverside, California this 18th day of Oct. 1960

Virginia J. Strohecker
 City Clerk of the City of Riverside

RESOLVED: That this map, consisting of one (1) sheet, be, and the
 same is hereby accepted as the official map of TRACT No 2145, and
 the streets and easements shown on this map are hereby accepted
 as public streets and easements, and the City Clerk is hereby author-
 ized and directed to attest said map by signing her name thereto as
 City Clerk of the City of Riverside, State of California and to affix
 the official seal of said City thereto

I hereby certify that the foregoing resolution was adopted by the
 Mayor and Council of the City of Riverside this 18th day of Oct. 1960

Virginia J. Strohecker
 City Clerk of the City of Riverside

OWNER

We hereby certify that we are the owners of or have some right
 title or interest in the land included in the subdivision shown on the
 annexed map consisting of (1) sheet, that we are the only persons
 whose consent is necessary to pass a clear title to said land and
 we hereby consent to the making of said map and subdivision
 as shown within the colored border lines and we hereby offer
 for dedication for Public use LOT "A" and "B" for street purposes
 and for construction and maintenance of all Public Utilities the
 10' easements shown by dashed lines and designated 10' P.U.E.

Ronald M. Wilson Bonnie D. Wilson
 SECURITY TITLE INSURANCE COMPANY, a Corporation, TRUSTEE.

By W. Harold Knehan Vice President By Ronald W. Ayers Assistant Secretary

STATE OF CALIFORNIA } ss.
 COUNTY OF RIVERSIDE }

On this 11th day of October 1960 before me a Notary Public
 in and for said County & State personally appeared

Ronald M. Wilson + Bonnie D. Wilson
 known to me to be the persons who executed the within instrument
 and acknowledged to me that they executed the same
 WITNESS my hand and official seal.

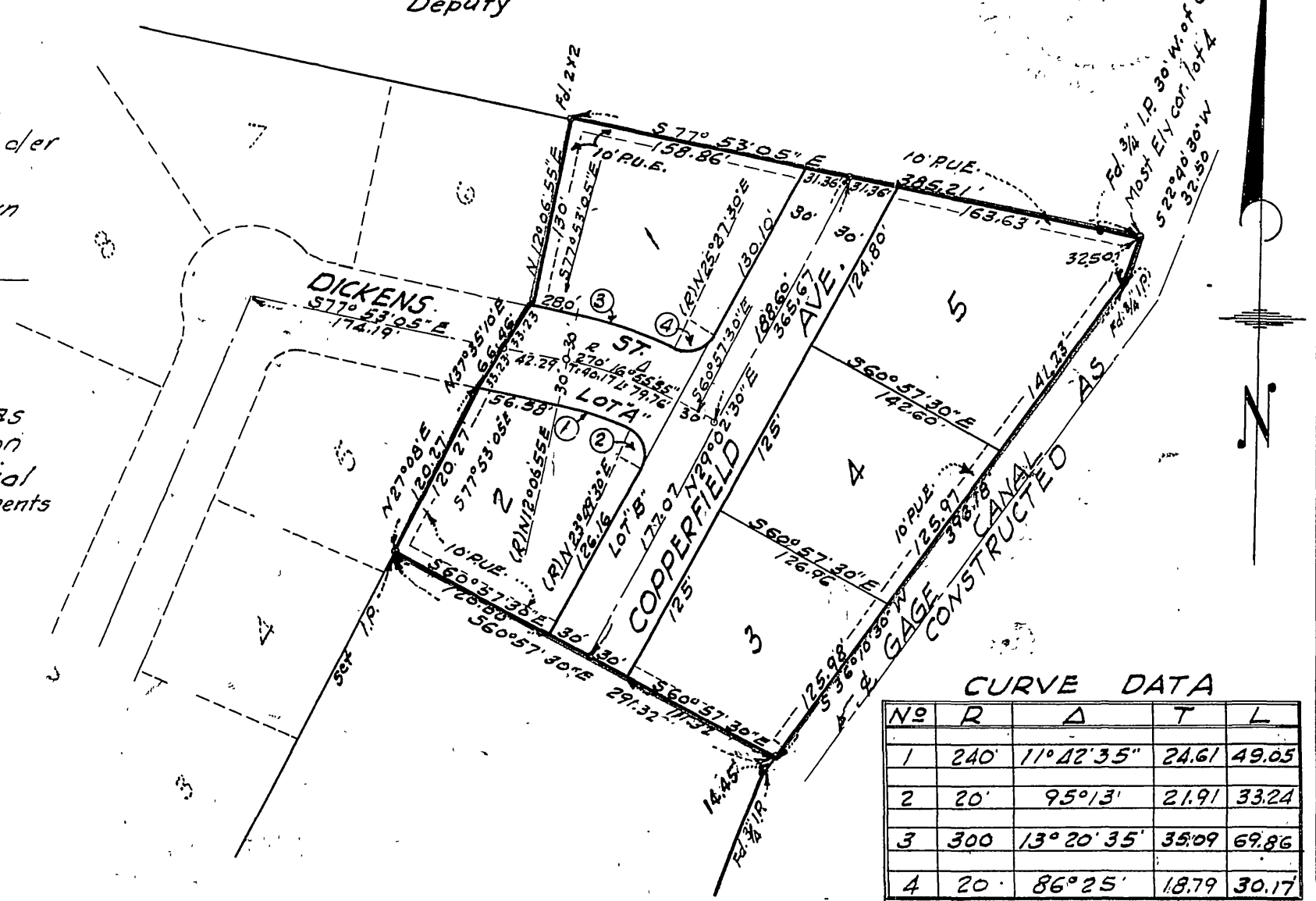
Helen E. Simmons
 Notary Public in and for said County and State.
 My Commission Expires 3-28-67

TAX BOND CERTIFICATE

I hereby certify that a bond in the sum of \$500.00 has been (executed and filed) deposited
 with the Board of Supervisors of the County of Riverside, State of California, conditioned on the
 payment of all taxes, State, County, Municipal or local, and all special assessments collected as taxes,
 which at the time of filing of this map with the County Recorder, are a lien against said property but not
 yet payable and said bond has been duly approved by said Board of Supervisors.
 Dated this 25th day of October 1960.

G.A. Pequegnat, County Clerk and ex-officio Clerk of the Board of Supervisors.

By m.a. Kellas Deputy



No	R	Δ	T	L
1	240'	11° 42' 35"	24.61	49.05
2	20'	95° 13'	2.191	33.24
3	300'	13° 20' 35"	35.09	69.86
4	20'	86° 25'	18.79	30.17