

MYERSCOUGH SUBDIVISION UNIT NO. 1

BEING A SUBDIVISION OF LOT 1 AND A PORTION OF LOT 3 BLOCK 64, LA SIERRA HEIGHTS NO. 2 AS SHOWN IN M.B. 7 AT PAGE 66, REC. RIV. CO., CALIF.

BY
ALBERT A. WEBB ASSOCIATES
CIVIL ENGINEERS
April 1960

FILED
NOV 23 1960
Jack A. Ross
William H. Balgh
Fees \$7.⁰⁰
AT 10:10 A.M.
By - Co. Clerk

We hereby certify that we are owners of, or have some right title or interest in and to the land included within the subdivision shown on the annexed map consisting of two (2) sheets; that we are the only persons whose consent is necessary to pass a clear title to said land, and we hereby consent to the making and filing of this map and subdivision as shown within the colored border lines, and we hereby offer for dedication to public use for street purposes the areas designated as Lots A thru I inclusive, and for construction and maintenance of public utilities the utility easements designated as "G.P.U.E." Lots J and K are offered for dedication to Riverside County.

J.-M. HOMES, INC., a California corporation

Clarence Myerough President
Vern D. Johnson Secretary

EQUITABLE TRUST COMPANY, a California Corp, as trustee

W. H. ... Vice President

STATE OF CALIFORNIA } S.S.
COUNTY OF RIVERSIDE }

On this 16th day of November 1960, before me, the undersigned a Notary Public in and for said County and State, personally appeared CLARENCE MYERSCOUGH AND VERN D. JOHNSON known to me to be the PRESIDENT AND SECRETARY of the J.-M. HOMES, INC. the corporation that executed the within instrument and known to me to be the person who executed the same on behalf of the corporation therein named and acknowledged to me that such corporation executed the same. WITNESS my hand and official seal.

Dulores E. ...
Notary Public in and for said County and State

My Commission expires September 22, 1962

STATE OF CALIFORNIA } S.S.
COUNTY OF RIVERSIDE }

On this 16 day of November, 1960, before me, the undersigned, a Notary Public in and for said County and State, personally appeared L. M. ...

known to me to be Vice President of the EQUITABLE TRUST COMPANY, the corporation that executed the within instrument and known to me to be the person who executed the same on behalf of the corporation therein named and acknowledged to me that such corporation executed the same.

WITNESS my hand and official seal.

M. ...
NOTARY PUBLIC in and for said County and State

My Commission expires ...

I hereby certify that according to the records of this office as of this date there are no liens against the property shown on the annexed map for unpaid State, County, Municipal or local taxes or special assessments collected as taxes, ~~except taxes now a lien but not yet payable which are estimated to be \$~~

Dated November 16, 1960

DONNA M. BOUER
Tax Collector

By ... Deputy

The County of Riverside, State of California, by and through its duly authorized officers hereby approves this final map and accepts the foregoing dedications, except Lots J and K which are accepted contingent upon the extension and improvement of the streets.

Dated Nov. 21 1960

COUNTY OF RIVERSIDE, STATE OF CALIFORNIA

By ...
Chairman, Board of Supervisors

ATTEST
G.A. PEQUEGNAT
County Clerk and ex-officio clerk of the Board of Supervisors

By ... Deputy

~~I hereby certify that a bond in the sum of \$ has been executed and filed with the Board of Supervisors of the County of Riverside, State of California conditioned upon the payment of all taxes, State, County, Municipal or local taxes and all special assessments collected as taxes which at the time of filing of this map with the County Recorder are a lien against said property but not yet payable, and said bond has been duly approved by said Board of Supervisors.~~

~~Dated ... 1960~~

~~G.A. PEQUEGNAT
County Clerk and ex-officio clerk of the Board of Supervisors~~

~~By ... Deputy~~

I hereby certify that I have examined the within map, that the subdivision shown hereon is substantially the same as it appeared on the tentative map and any approved alterations thereof, that all provisions of State Law and County Ordinance No. 460 have been complied with and I am satisfied that this map is technically correct.

Dated November 16, 1960

A.C. KEITH
County Surveyor

By ... Deputy

The tentative map was approved by the Riverside County Planning Commission in accordance with requirements of law in duly authorized meeting held on the 27th day of October 1959.

Harold J. Evensen
Secretary

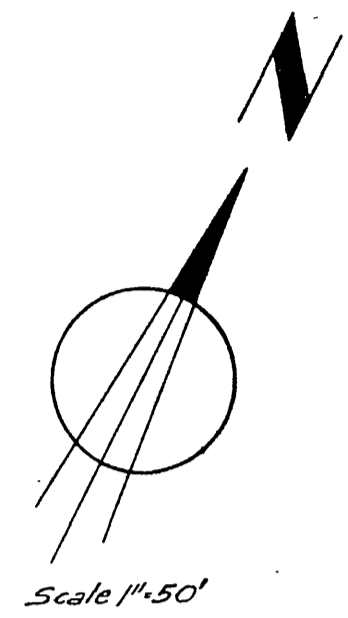
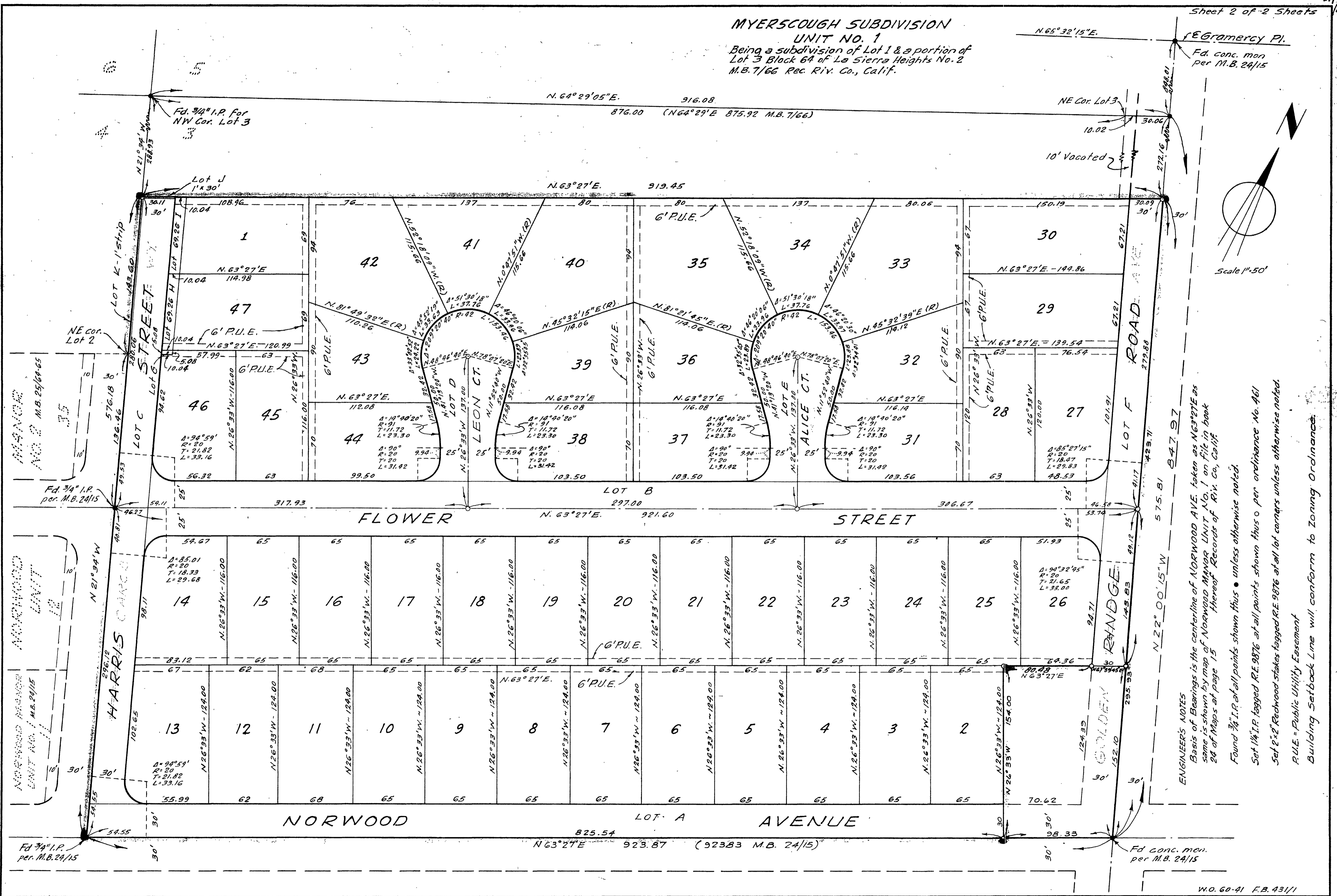
I hereby certify that I am a Registered Civil Engineer of the State of California and that this map consisting of two (2) sheets correctly represents a survey made under my supervision during March 1960, and that all monuments shown hereon actually exist and their positions are correctly shown or shall be in position not later than one year from the recordation of this map.

Dated NOV 4th 1960

Ernest N. Walsh
Registered Civil Engineer No. 9876

MYERSCOUGH SUBDIVISION UNIT NO. 1

Being a subdivision of Lot 1 & a portion of
Lot 3 Block 64 of La Sierra Heights No. 2
M.B. 7/66 Rec. Riv. Co., Calif.



ENGINEER'S NOTES
Basis of Bearings is the centerline of NORWOOD AVE. taken as N63°27'E as same is shown by map of NORWOOD MAJOR UNIT No. 1 on file in book 24 of Maps at page 15 Hereof Records of Riv. Co., Calif.
Found 3/4 I.P. at all points shown thus • unless otherwise noted.
Set 1/4 I.P. tagged R.E. 9876 at all points shown thus o per ordinance No. 461
Set 2x2 Redwood stakes tagged R.E. 9876 at all lot corners unless otherwise noted.
P.U.E. = Public Utility Easement
Building setback Line will conform to Zoning Ordinance.