

# IN THE COUNTY OF RIVERSIDE MYERSCOUGH SUBDIVISION UNIT NO. 2

BEING A SUBDIVISION OF A PORTION OF LOT 3, BLOCK 64, LA SIERRA HEIGHTS  
TRACT NO 2 AS SHOWN IN M.B. 7 AT PAGE 66, REC. RIV. CO., CALIF. IN SEC.  
10, T.3S., R.6W. OF RANCHO LA SIERRA.

**FILED**  
August 16, 1961  
No. 70351 at 2:45 P.M.  
Jack A. Ross  
County Recorder  
By C. A. M. [Signature] Deputy  
Fee \$1.00 No. [ ]  
Filed By County Clerk

We hereby certify that we are the owners of or have some right, title or interest in the land included within the subdivision shown hereon; that we are the only persons whose consent is necessary to pass a clear title to said land and we hereby consent to the making and filing of said map and subdivision as shown within the colored border line and we hereby offer for dedication to public use for street purposes Lots A to E inclusive; and for construction and maintenance of public utilities, the public utility easements designated as "10' P.U.E." & "6' P.U.E." Lots F & G are offered for dedication to County of Riverside.

I hereby certify that according to the records of this office as of this date there are no liens against the real property shown on the annexed map for unpaid State, County, Municipal or local taxes or special assessments collected as taxes except taxes now a lien but not yet payable which are estimated to be \$ 800.00.  
Dated June 30 1961  
DONNA M. BOUER  
County Tax collector

I hereby certify that I am a Registered Civil Engineer of the State of California and that this map correctly represents a survey made under my supervision during March 1960, and that all monument shown actually exist and their positions are correctly shown, or shall be in position not later than one year from the recordation of this map.  
Dated MAY 9<sup>TH</sup> 1961  
Ernest N. Wells  
Registered Civil Engineer No. 9876

J.-M. HOMES, INC. a California corporation  
Clarence Myerscough President Verne D. Johnson Secretary

By Frank C. Brown Deputy

The County of Riverside, State of California, by and through its duly authorized officers hereby approves this final map and accepts the foregoing dedications, except Lots F and G which are accepted contingent upon the extension and improvement of the streets.

I hereby certify that I have examined the within map, that the subdivision shown hereon is substantially the same as it appeared on the tentative map and any approved alterations thereof, that all provisions of State Law and County Ordinance No. 460 have been complied with and I am satisfied that this map is technically correct.

Dated August 9, 1961  
A.C. KEITH  
County Surveyor  
By G. T. Worsley Deputy

STATE OF CALIFORNIA } S.S.  
COUNTY OF RIVERSIDE }  
On this 14 day of August 1961, before me, the undersigned a Notary Public in and for said County and State, personally appeared Clarence Myerscough and Verne D. Johnson known to me to be the President and Secretary of the corporation that executed the within instrument and known to me to be the persons who executed the same on behalf of the corporation therein named and acknowledged to me that such corporation executed the same.  
WITNESS my hand and official seal.  
Beverly Delmont  
Notary Public in and for said County and State  
My Commission expires May 17, 1963

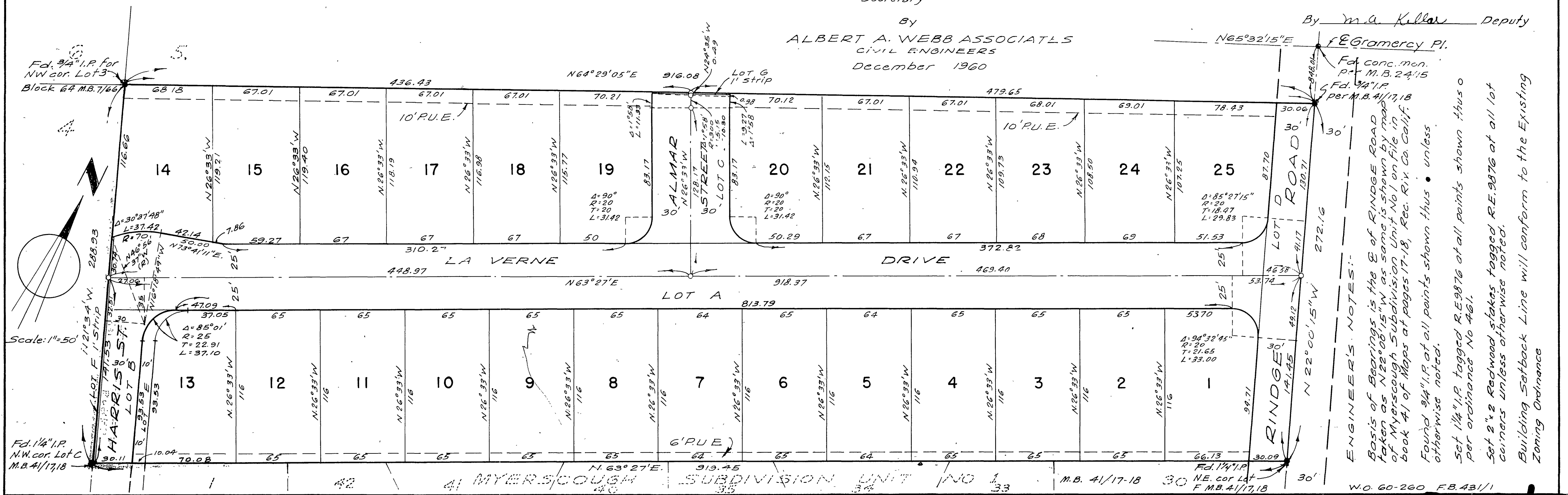
Dated August 14 1961 COUNTY OF RIVERSIDE, STATE OF CALIFORNIA  
By [Signature]  
Chairman of Board of Supervisors  
ATTEST:  
G.A. PEQUEGNAT  
County Clerk and ex-officio clerk of the Board of Supervisors  
By M.A. Keller Deputy

I hereby certify that a bond in the sum of \$ 800.00 has been filed with the Board of Supervisors of the County of Riverside, State of California conditioned upon the payment of all taxes, State, County, Municipal or local taxes and all special assessments collected as taxes, which at the time of filing of this map with the County Recorder, are a lien against said property but not yet payable, and said bond has been duly approved by said Board of Supervisors.  
Dated August 14 1961

The tentative map of MYERSCOUGH SUBDIVISION was approved by the Riverside County Planning Commission in accordance with requirements of law in duly authorized meeting held on the 27 day of October 1959  
Paul J. Jensen  
Secretary

G.A. PEQUEGNAT  
County Clerk and ex-officio clerk of the Board of Supervisors  
By M.A. Keller Deputy

By  
ALBERT A. WEBB ASSOCIATES  
CIVIL ENGINEERS  
December 1960



ENGINEER'S NOTES:  
Basis of Bearings is the E of RINGE ROAD taken as N 22° 06' 15" W as same is shown by map of Myerscough Subdivision Unit No. 1 on file in book 41 of Maps at pages 17-18, Rec. Riv. Co. Calif.  
Found 9/4" I.P. at all points shown thus • unless otherwise noted.  
Set 1/4" I.P. tagged R.E. 9876 at all points shown thus o per ordinance No 461.  
Set 2" x 2 Redwood stakes tagged R.E. 9876 at all lot corners unless otherwise noted.  
Building Setback Line will conform to the Existing Zoning Ordinance

MB42/37