

44/42

IN THE CITY OF RIVERSIDE

# TRACT 2316

BEING A SUBDIVISION OF A PORTION OF THE N.W. 1/4  
OF THE N.E. 1/4 OF SECTION 33, T.2 S. R.5 W., S.B.B. & M.  
FEBRUARY 1962 SCALE 1" = 60'

J. F. DAVIDSON, C. E.

SHEET 1 OF 2 SHEETS

**FILED**  
On July 3, 1962

At 3:50 P.M.

By Jack A. Ross  
County Recorder

By William B. DeLoach  
Deputy

Fee \$ 2.00

NR 02101

Filed by County Clerk  
F.A.T.G.

### OWNERSHIP

We hereby certify that we are the owners of or have some right, title or interest in the land included within the subdivision shown hereon; that we are the only persons whose consent is necessary to pass a clear title to said land; that we consent to the making and recording of said map and subdivision as shown within the colored border line and that we hereby offer for dedication for public use for street purposes Lots A to B inclusive and for the construction and maintenance of all public utilities, the easements shown by dashed lines and designated "5' P.U.E.", "10' P.U.E.", "10' x 25' P.U.E.", "10' Sewer Easement", and "5' STORM DRAIN EASEMENT". We also offer for dedication to the City of Riverside Lot C.

By Clifford Wiehe, Jr. By E. Jeannette Wiehe

STATE OF CALIFORNIA }  
COUNTY OF RIVERSIDE } S.S.

On June 20, 1962, before me, the undersigned, a Notary Public in and for said County and State, personally appeared CLIFFORD WIEHE, JR., and E. JEANNETTE WIEHE, known to me to be the persons who executed the within instrument and they acknowledged to me that they executed the same.

Dolores E. Valentine  
Notary Public in and for said County and State  
DOLORES E. VALENTE

My commission expires 9-22-62.

### CITY PLANNING COMMISSION

I hereby certify that this map is as approved by the Riverside City Planning Commission at its meeting held MAY 3, 1962.

Thomas M. Brown  
Planning Director, City of Riverside

### DIRECTOR OF PUBLIC WORKS

I hereby certify that I have examined the within map; that the subdivision shown hereon is substantially the same as it appeared on the tentative map and any approved alterations thereof; that all provisions of Chapter 128 (Subdivision Map Act) Statutes of California, 1943, and of Ordinance No. 1328 of the City of Riverside, California, and all amendments thereto have been complied with; that plans and specifications for drains, drainage, sewer and drainage works sufficient to protect all lots in said subdivision from flood or overflow have been approved by me; that all easements for sewers shown on said map are correct in form and contents and are approved; and I am satisfied that this map is technically correct.

Dated June 25, 1962

James F. Martinich  
DIRECTOR OF PUBLIC WORKS  
By A. R. Theal Asst. City Engineer

### STREET SUPERINTENDENT

I hereby certify that according to the records of this office, the property shown on this map is not subject to any special assessments which have not been paid in full.

Dated June 20, 1962

R. M. Rossi & R. W. Bruffe  
Street Superintendent

### SUPERINTENDENT OF LIGHT AND WATER DEPARTMENT

I hereby certify that the subdivider named on this map has deposited with the Water Department of the City of Riverside sufficient funds to cover the cost of installing all necessary fire hydrants together with all water mains and laterals to the curb line on all streets shown on said map; that all P.U.E. shown on this map are sufficient for all requirements of the Electric Light and Water Departments of the City of Riverside and for the Department of Public Utilities of said City.

Dated June 21, 1962.

Edward A. Ross  
Superintendent of Light and Water Dept.,  
City of Riverside, California.

### CITY TREASURER

I hereby certify that according to the records of this office as of this date, the property shown on this map is not subject to any special assessments, bonds and/or liens which have not been paid in full.

This certificate does not include any special assessments the bonds of which have not become a lien upon said property.

Dated June 21, 1962.

R. W. Miller  
CITY TREASURER

### CITY CLERK

I, V. J. STROHECKER, City Clerk of the City of Riverside, California, hereby certify that on undertaking satisfactory to the Council of said City guaranteeing the construction of required street improvements in this subdivision was approved and filed in my office prior to the final acceptance of this subdivision map.

Virginia J. Strohecker  
City Clerk of the City of Riverside, California.  
By Jean D. Black Deputy

### RESOLUTION OF ACCEPTANCE

RESOLVED: That this map consisting of two (2) sheets be, and the same is hereby accepted as the official map of TRACT 2316 and the streets and easements are hereby accepted as public streets and easements. Except that the acceptance of Lot C is contingent on the extension and improvement of Lot B and the City Clerk is hereby authorized and directed to attest said map by signing her name thereto as City Clerk of the City of Riverside, State of California, and affix the official seal of said City thereto. I hereby certify that the foregoing resolution was adopted by the Mayor and Council of the City of Riverside this 26th day of June, 1962.

Virginia J. Strohecker  
City Clerk of the City of Riverside, California.  
By Jean D. Black Deputy

### TAX COLLECTOR

I hereby certify that according to the records of this office as of this date, there are no liens against the property shown on the within map for unpaid State, County, Municipal or Local taxes or special assessments collected as taxes, except taxes and special assessments collected as taxes now a lien but not yet payable, which are estimated to be \$ 5,500.00.

Dated June 20th, 1962.

DONNA M. BOUER County Tax Collector  
By Edith Schermerhorn Deputy

### TAX BOND

I hereby certify that a bond in the sum of \$ 5,500.00 has been executed and filed with the Board of Supervisors of the County of Riverside, California, conditioned upon the payment of all taxes, State, County, Municipal or Local, and all special assessments collected as taxes which at the time of filing of this map with the County Recorder are a lien against said property but not yet payable and said bond has been duly approved by said Board of Supervisors.

Dated July 2, 1962.

G. A. PEQUEGNAT  
County Clerk and ex-officio  
Clerk of the Board of Supervisors.  
By R. P. King Deputy

### CIVIL ENGINEER

I hereby certify that I am a Registered Civil Engineer of the State of California and that this map consisting of two (2) sheets correctly represents a survey made under my supervision during November of 1961; that all monuments shown hereon actually exist and their positions are correctly shown, or will be in place within one year of the recordation of this map.

J. F. Davidson  
Registered Civil Engineer No. 262

M.B. 44/42  
2316

M.B. 44/42  
2316

44/43

GREENFIELD AVE

JURUPA AVENUE

AVENUE

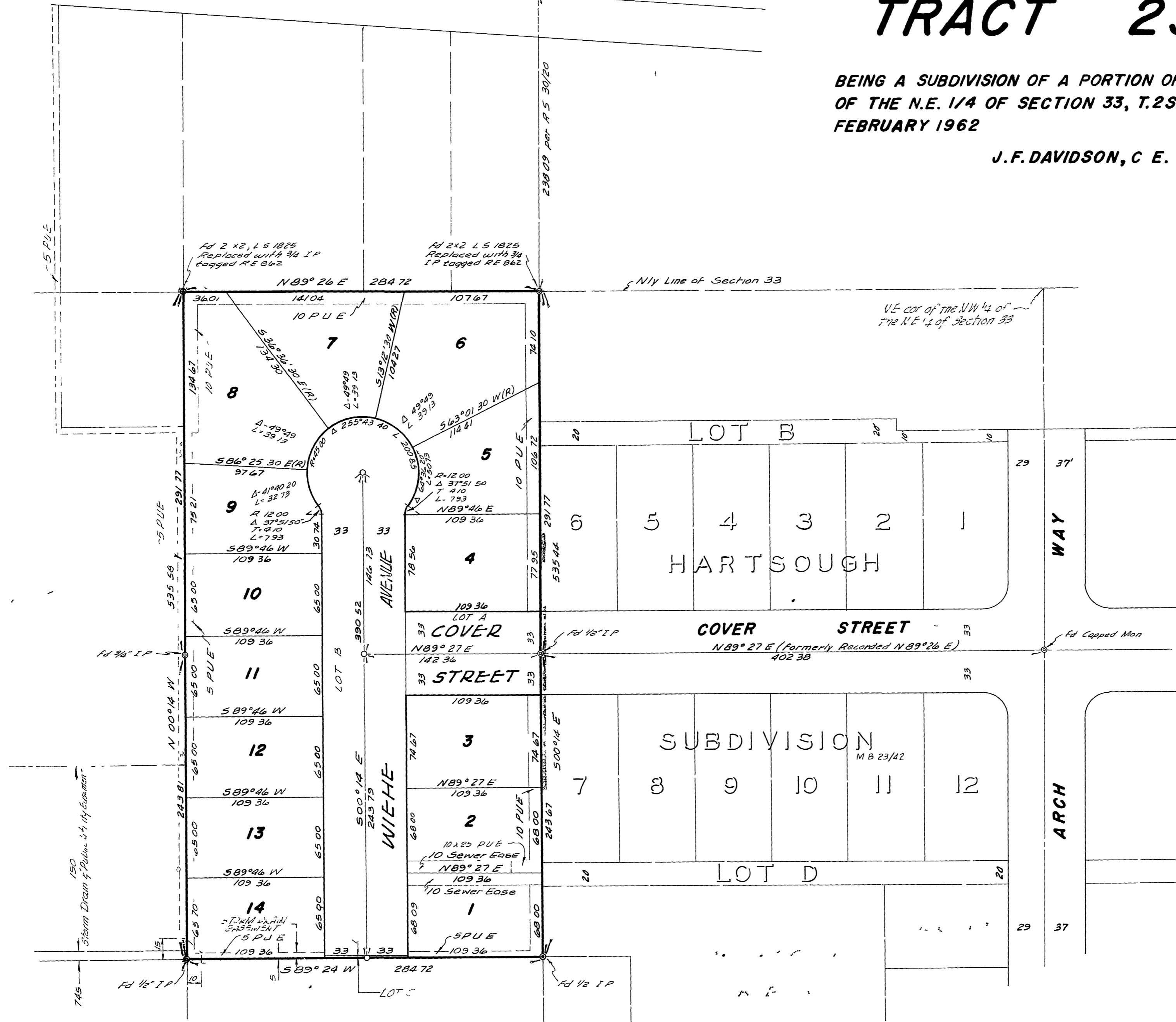
IN THE CITY OF RIVERSIDE

# TRACT 2316

BEING A SUBDIVISION OF A PORTION OF THE N.W. 1/4 OF THE N.E. 1/4 OF SECTION 33, T.2S. R.5W., S.B.B & M. FEBRUARY 1962

SCALE 1" = 60'

J.F. DAVIDSON, C.E.



Engineer's Notes.  
 Bearings are based on the Westerly line of HARTSOUGH SUBDIVISION, M.B. 23/42, Records of Riverside County, California, being 500°14' E  
 2 x 2 Redwood Stakes, painted yellow and tagged RE 862, set at all lot corners  
 ○ Indicates 3/4 Pipe tagged RE 862 set

M.B. 44/43

M.B. 44/43