

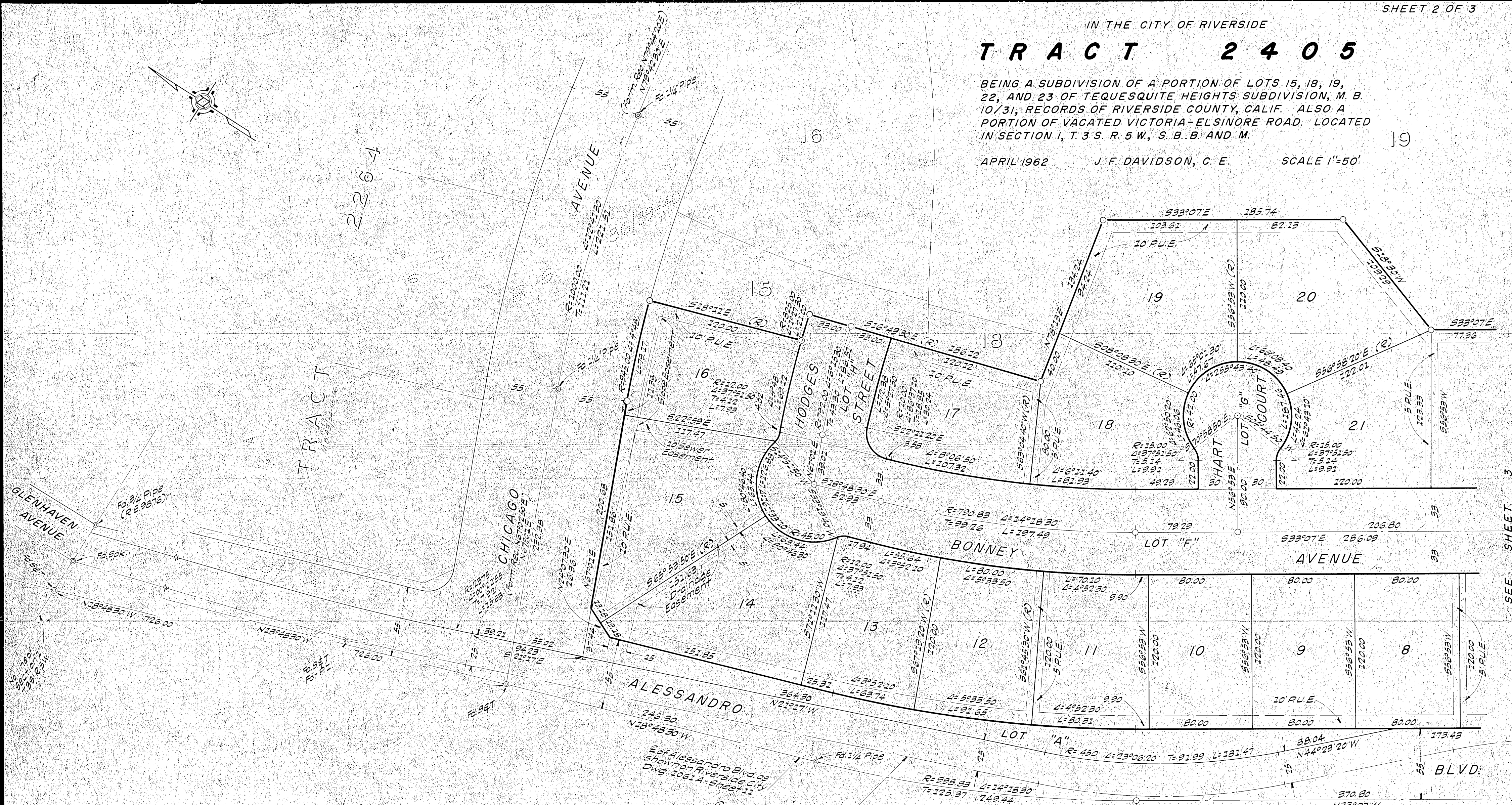
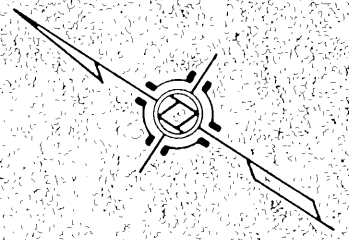
44/50

IN THE CITY OF RIVERSIDE

TRACT 2405

BEING A SUBDIVISION OF A PORTION OF LOTS 15, 18, 19, 22, AND 23 OF TEQUESQUITE HEIGHTS SUBDIVISION, M. B. 10/31, RECORDS OF RIVERSIDE COUNTY, CALIF. ALSO A PORTION OF VACATED VICTORIA-ELSINORE ROAD. LOCATED IN SECTION I, T.3 S. R. 5 W., S. B. B. AND M.

APRIL 1962 J. F. DAVIDSON, C. E. SCALE 1"=50'



ENGINEER'S NOTE

Bearings are based on the center line of Alessandro Blvd., being N 13° 48' 30" W, as shown on map of "TRACT 2264" Map Book 43, Pages 54 to 56, Records of Riverside County, California.

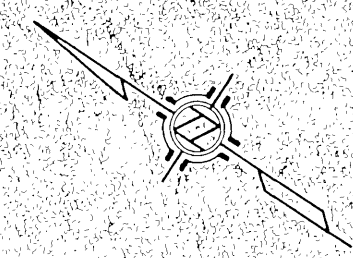
2" x 2" Redwood Stakes, painted yellow and tagged R.E. 662, set at all lot corners.

○ Indicates 1/4" Pipe tagged R.E. 662 set.

SEE SHEET 3

2405A
M.B. 44/50

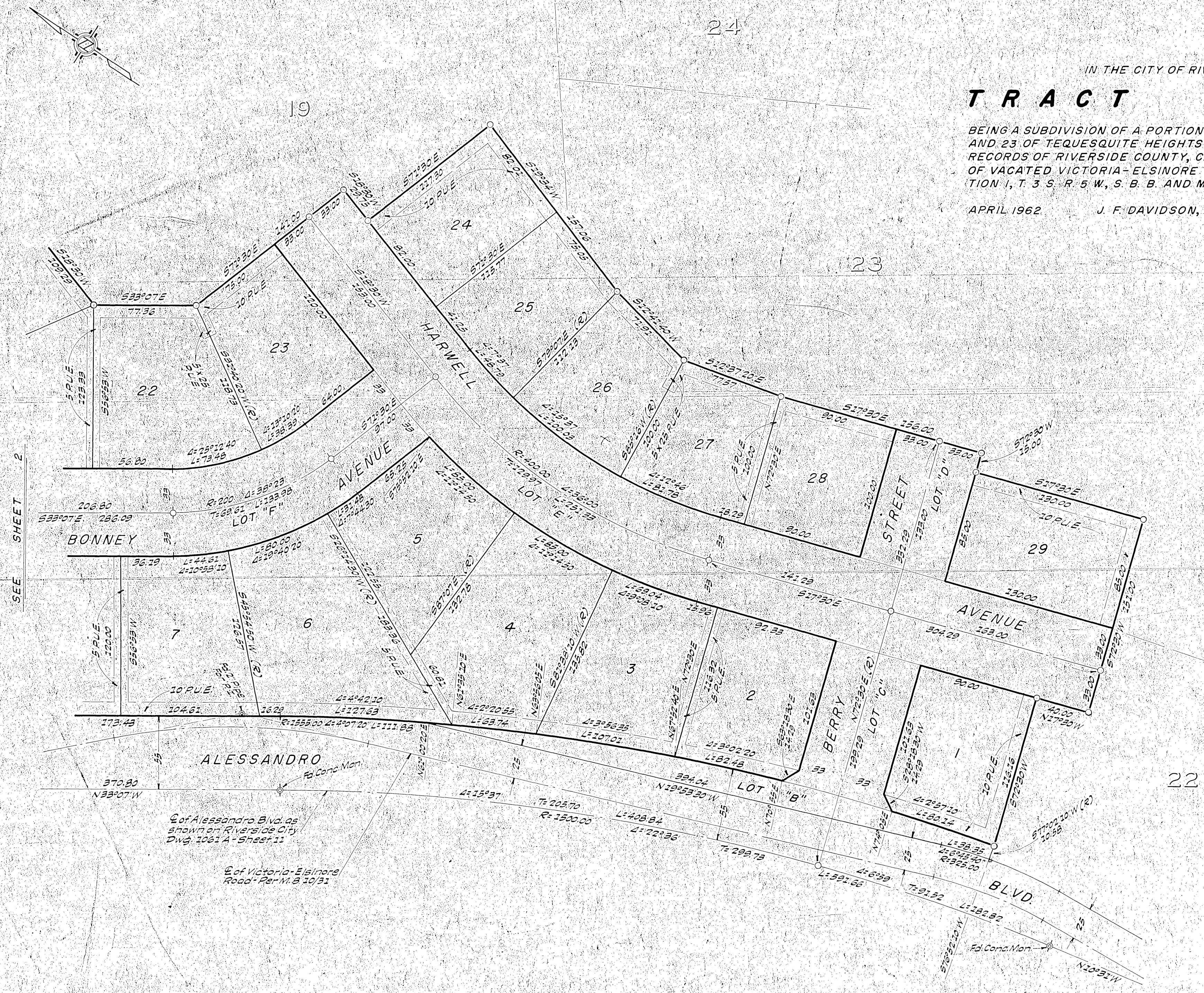
2405A
M.B. 44/50



TRACT 2405

IN THE CITY OF RIVERSIDE
BEING A SUBDIVISION OF A PORTION OF LOTS 15, 18, 19, 22, AND 23 OF TEQUESQUITE HEIGHTS SUBDIVISION, M. B. 10/31, RECORDS OF RIVERSIDE COUNTY, CALIF. ALSO A PORTION OF VACATED VICTORIA-ELSINORE ROAD. LOCATED IN SECTION 1, T. 3 S. R. 5 W., S. B. B. AND M.

APRIL 1962 J. F. DAVIDSON, C. E. SCALE 1" = 50'



SEE SHEET 2

☉ of Alessandro Blvd. as shown on Riverside City Dwg. 1061 A - Sheet 11

☉ of Victoria-Elsinore Road - Per M. B. 10/31

2405 B
M.B. 10/31

2405 B
M.B. 10/31