

44/52

STATE OF CALIFORNIA } S.S.
COUNTY OF RIVERSIDE }

On this 10th day of July 1962, before me, the undersigned, a Notary Public in and for said County and State, personally appeared A.L. Kruse and L.E. Cope, known to me to be the PRESIDENT and Asst Secy. - TREAS., respectively of Alhambra Bond Company, the corporation that executed the within instrument and known to me to be the persons who executed the same on behalf of the corporation therein named and acknowledged to me that such corporation executed the same.

WITNESS my hand and official seal.

Ethan M. Johnson
Notary Public in and for said
County and State

My commission expires January 4, 1964

We hereby certify that we are the owners of, or have some right, title or interest in the land included within the subdivision shown on the annexed map; that we are the only persons whose consent is necessary to pass a clear title to said land, and we hereby consent to the making and filing of said subdivision, and map as shown within the colored border line, and we hereby offer for dedication to public use for street purposes, Lots "A" to "E" inclusive, and for construction and maintenance of public utilities the public utility easements designated as "5' P.U.E." and "10' P.U.E." and "5' x 25' P.U.E." and for sewer purposes and storm drain purposes the easements designated as "8' sewer easement" and "8' storm drain easement."

AMERICANA BUILDERS INC., a Corporation
Veldon W. Shaw President
J. N. Shaw Secretary - Treasurer
ALHAMBRA BOND COMPANY, a Corporation, TRUSTEE
A.L. Kruse Pres.
L.E. Cope Asst. Secy. - Treas.

STATE OF CALIFORNIA } S.S.
COUNTY OF RIVERSIDE }

On this 11 day of July 1962, before me, the undersigned, a Notary Public in and for said County and State, personally appeared Veldon W. Shaw and F.W. Shaw, known to me to be the President and Secretary - Treasurer, respectively of AMERICANA BUILDERS INC., the corporation that executed the within instrument and known to me to be the persons who executed the same on behalf of the corporation therein named and acknowledged to me that such corporation executed the same.

WITNESS my hand and official seal.

Eugene L. Shaw
Notary Public in and for said
COUNTY AND STATE

My commission expires May 11, 1966

STATE OF CALIFORNIA } S.S.
COUNTY OF RIVERSIDE }

J. V.J. Strohecker, City Clerk of the City of Riverside, California, hereby certify that an undertaking satisfactory to the Council of said City, guaranteeing the construction of required street improvements in this subdivision was approved and filed in my office prior to the final acceptance of this subdivision map.

IN WITNESS WHEREOF, I have hereto set my hand and affixed the official seal of the City of Riverside, California this 17th day of July 1962.

Virginia J. Strohecker
City Clerk of the City of
Riverside, California
By Jean D. Black Deputy

IN THE CITY OF RIVERSIDE
TRACT NO. 2073

BEING A SUBDIVISION OF PORTIONS OF S1/2 AND THE NE 1/4 OF SECTION 36, T.2S., R.5W., S.B.B.&M.

~ BY ~
ALBERT A. WEBB ASSOCIATES
CIVIL ENGINEERS
RIVERSIDE CALIFORNIA

MAY 1962

I hereby certify that the subdivider named on this map has deposited with the Water Department of the City of Riverside sufficient funds to cover the cost of installing all necessary fire hydrants, together with all water mains and laterals to the curb line on all streets shown on this map; and that all public utility easements shown on this map are sufficient for all requirements of the Electric Light and Water Department of the City of Riverside and for the Departments of Public Utilities of said City.

Dated July 12, 1962
Eureth Ross
Superintendent of Light and Water
Departments of the City of Riverside, Calif.

I hereby certify that I have examined the within map, that the subdivision shown hereon is substantially the same as it appeared on the tentative map and any approved alterations thereof, that all provisions of Chapter 128 (Subdivision Map Act), Statutes of California 1943 and of Ordinance N.S. 1328, of the City of Riverside, California and all amendments thereto, have been complied with, that plans and specifications for drain, drainage, sewer and drainage works sufficient to protect all lots in said subdivision from flood or overflow have been approved by me, that all easements for sewers and drains shown on said map are correct in form and contents, and are approved, and I am satisfied that this map is technically correct.

Dated July 16th 1962
J. Matweh
Director of Public Works

I hereby certify that I am a Registered Civil Engineer of the State of California, and this map, consisting of three (3) sheets, correctly represents a survey made under my supervision during September, 1960, and that all monuments shown hereon actually exist and their positions are correctly shown or shall be in position not later than one (1) year from the recordation of this map.

Dated JUNE 19 1962
Ernest N. Webb
Registered Civil Engineer No. 9876

RESOLVED: That this map consisting of three (3) sheets be and the same is hereby accepted as the official map of Tract No. 2073, that the streets and public utility easements, 8' sewer easement and 8' storm drain easement hereon are hereby accepted as public streets, public utility easements sewer easement and storm drain easement and the City Clerk is hereby authorized and directed to attest said map by signing her name thereto as City Clerk of the City of Riverside, and to affix the seal of the City thereto.

I hereby certify that the foregoing resolution was adopted by the Mayor and Council of the City of Riverside this 17th day of July 1962.
Virginia J. Strohecker
City Clerk of the City of Riverside, California
By Jean D. Black Deputy

69349

FILED

JUL 24 1962
JACK A. ROSS
Clear Sheldron
Fee \$ 9.00
3:15 P.M.
By County Clerk
Glee - Sec. Title Ins. Co.

I hereby certify that according to the records of this office as of this date, the property shown on this map is not subject to any special assessments, bonds, and/or liens which have not been paid in full. This certificate does not include any special assessments, the bonds of which have not yet become a lien upon said property.

Dated July 12 1962
P. B. Shuller
City Treasurer

I hereby certify that according to the records of this office the property shown on this map is not subject to any special assessments which have not been paid in full.

Dated July 13 1962
W. J. Ross
Street Superintendent

I hereby certify that according to the records of this office as of this date, there are no liens against the property shown on this map for unpaid State, County, Municipal or local taxes, or special assessments collected as taxes, except taxes and special assessments now a lien, but not yet payable which are estimated at \$ 1200.00.

Dated July 18, 1962
DONNA M. BOUER
County Tax Collector
By Edith Schenkerhorn Deputy

I hereby certify that this map was approved by the Riverside City Planning Commission at its meeting held on 7 day of June 1962.

Thomas M. Brown
Planning Director
City of Riverside

I hereby certify that a bond in the sum of \$ 1200.00 has been filed with the Board of Supervisors of the County of Riverside, State of California, conditioned upon the payment of all taxes, state, county, municipal or local and all special assessments collected as taxes, which at the time of filing of this map with the County Recorder are a lien against said property but not yet payable, and said bond has been duly approved by said Board of Supervisors.

Dated July 23 1962
GORDON A. PEQUEGNAT
County Clerk and ex-officio Clerk
of the Board of Supervisors
By M.A. Kellar Deputy

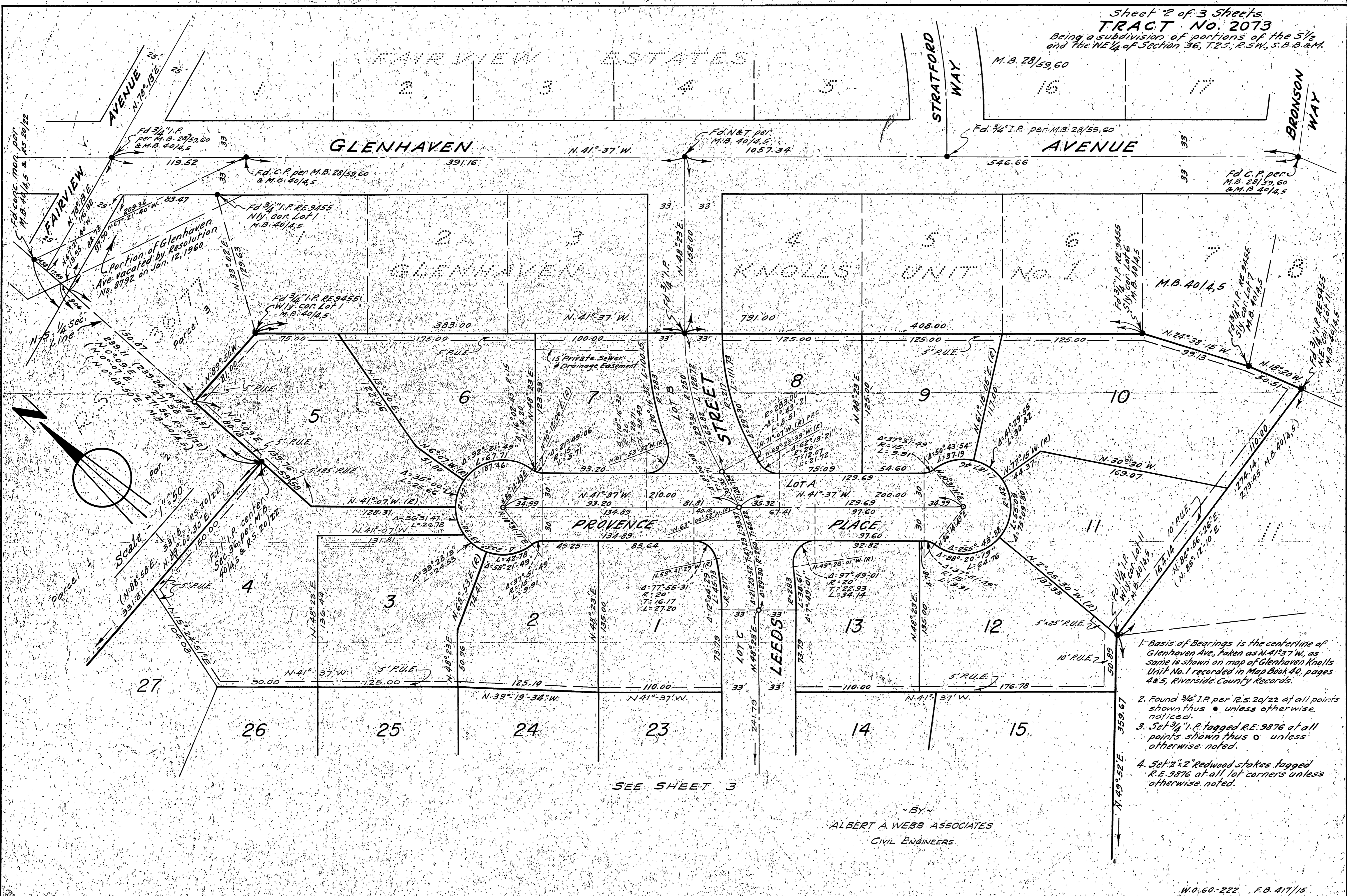
2073
M.B. 44/52

MISSION BLUE PRINT CO.
M.B. 44/52

2073
M.B. 44/52

Sheet 2 of 3 Sheets
TRACT No. 2073
Being a subdivision of portions of the S 1/2
and the NE 1/4 of Section 36, T25, R5W, S.B.B. & M.

2073A
M.B. 44/53

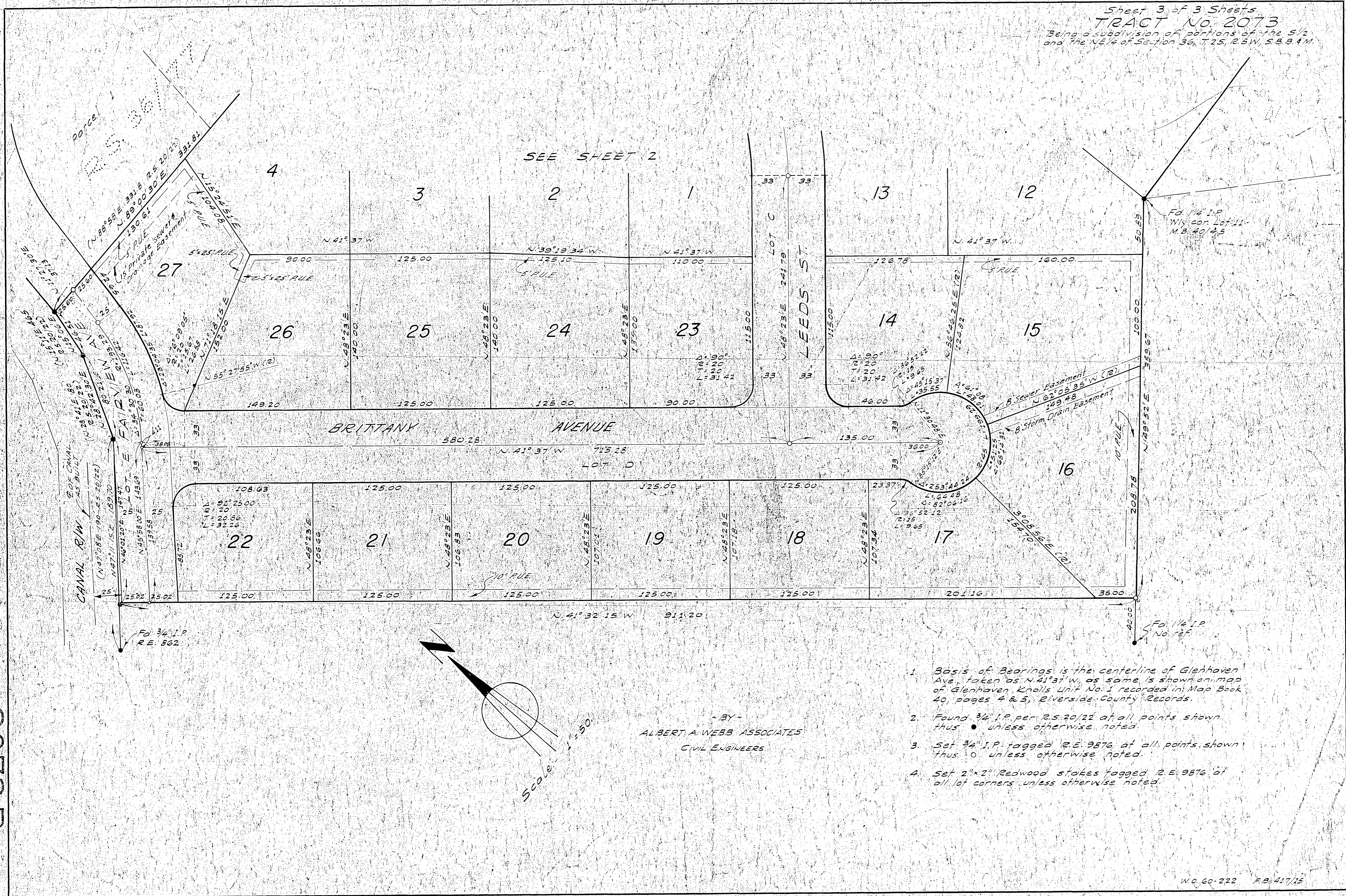


1. Basis of Bearings is the centerline of Glenhaven Ave, taken as N. 41° 37' W, as same is shown on map of Glenhaven Knolls Unit No. 1 recorded in Map Book 40, pages 4 & 5, Riverside County Records.
2. Found 3/4" I.P. per R.S. 20/22 at all points shown thus • unless otherwise noticed.
3. Set 3/4" I.P. tagged R.E. 9876 at all points shown thus ○ unless otherwise noted.
4. Set 2"x2" Redwood stakes tagged R.E. 9876 at all lot corners unless otherwise noted.

BY
ALBERT A. WEBB ASSOCIATES
CIVIL ENGINEERS

2073A
M.B. 44/53

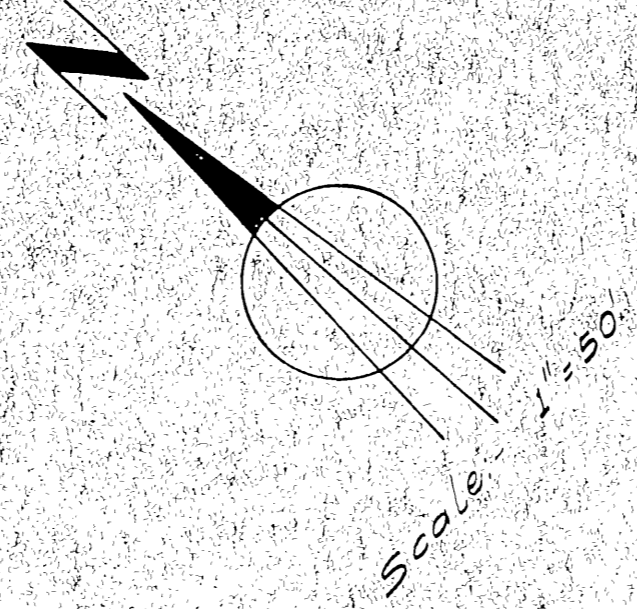
2073B
MB 44/54



SEE SHEET 2

Fd. 1/4 I.P.
Wiscor Lot 11
M.B. 40/45

Fd. 1/4 I.P.
No. 18f



BY
ALBERT A. WEBB ASSOCIATES
CIVIL ENGINEERS

1. Basis of Bearings is the centerline of Glenhaven Ave., taken as N. 41° 37' W., as same is shown on map of Glenhaven Knolls Unit No. 1 recorded in Map Book 40, pages 4 & 5, Riverside County Records.
2. Found 3/4" I.P. per R.S. 20/22 at all points shown, thus unless otherwise noted.
3. Set 3/4" I.P. tagged R.E. 9876 at all points shown, thus unless otherwise noted.
4. Set 2" x 2" Redwood stakes tagged R.E. 9876 at all lot corners unless otherwise noted.

2073B
MB 44/54