

IN THE CITY OF RIVERSIDE CALIFORNIA TRACT NO. 2490

BEING A SUBDIVISION OF A PORTION OF LOTS 13, & 14, BLOCK E OF ARLINGTON HEIGHTS, M.B. 2/12 AND A PORTION OF LOTS 17 & 19 OF OSBORNE HEIGHTS M.B. 12/39-41, BOTH RECORDS RIVERSIDE COUNTY, CALIFORNIA, IN SECTION 11, T. 3 S., R. 5 W., S. B. B. & M.

FILED

On Oct 18 1962
at 2:30 P.M.

JACK A. ROSS
County Recorder
W. C. B. B. B. B.
Deputy

Fee \$ 11.00
By - County Clerk
S. T. I. Co.

M.B. 45/5
2490

~ By ~

ALBERT A. WEBB ASSOCIATES
CIVIL ENGINEERS
JULY 1962

OWNERS' CERTIFICATE

We hereby certify that we are the owners of, or have some right, title or interest in the land included within the subdivision shown on the annexed map; that we are the only persons whose consent is necessary to pass a clear title to said land, and we hereby consent to the making and filing of said subdivision and map as shown within the colored border line, and we hereby offer for dedication to public use for street purposes, Lots A to C inclusive, and for the construction and maintenance of all public utilities the easements designated as 10' Sewer Easement and 16' Sewer and Drainage Easement, and 10' P.U.E. and 20' Sewer and Drainage Easement.

HAWARDEN HILLS, INC., a corporation

William J. Fured PRESIDENT
Milton R. Nims Jr. VICE PRESIDENT

INLAND MORTGAGE COMPANY, a corporation Trustee

NOTARY ACKNOWLEDGMENT

State of California }
County of Riverside } S.S.
On this 10th day of October 1962, before me, the undersigned, a Notary Public in and for said County and State, personally appeared WILLIAM A. FURED and MILTON R. NIMS JR. known to me to be the PRESIDENT and VICE PRESIDENT respectively of the corporation that executed the within instrument and known to me to be the persons who executed the same on behalf of the corporation therein named and acknowledged to me that such corporation executed the same.
WITNESS my hand and official seal.

My Commission expires May 11, 1966
Eugene L. Shaw
Notary Public in and for said
County and State
EUGENE L. SHAW

NOTARY ACKNOWLEDGMENT

State of California }
County of Riverside } S.S.
On this day of 1962, before me, the undersigned, a Notary Public in and for said County and State, personally appeared and known to me to be the and respectively of the corporation that executed the within instrument and known to me to be the persons who executed the same on behalf of the corporation therein named and acknowledged to me that such corporation executed the same as Trustee.
WITNESS my hand and official seal.

My Commission expires
Notary Public in and for said
County and State.

SUPERINTENDENT OF LIGHT AND WATER DEPARTMENT

I hereby certify that the subdivider named on this map has deposited with the Water Department of the City of Riverside sufficient funds to cover the cost of installing all necessary fire hydrants, together with all water mains and laterals to the curb line on all streets shown on this map, and that all public utility easements shown on this map are sufficient for all requirements of the Electric Light and Water Department of the City of Riverside and for the Department of Public Utilities of said City.

Dated Oct 11 1962

J. E. Davis
Superintendent of Light and Water
Department of City of Riverside

DIRECTOR OF PUBLIC WORKS CERTIFICATE

I hereby certify that I have examined the within map, that the subdivision shown hereon is substantially the same as it appeared on the Tentative Map and any approved alterations thereof, that all provisions of Chapter 228 (Subdivision Map Act) Statutes of California 1943, and of Ordinance No. 1320 of the City of Riverside, California, and all amendments thereto have been complied with, that plans and specifications for drain, drainage, sewer and drainage works sufficient to protect all lots in said subdivision from flood or overflow have been approved by me, that all easements for sewer and drains shown on said map are correct, in form and contents, and approved, and I am satisfied that this map is technically correct.

Dated Oct 16 1962

Director of Public Works

CITY PLANNING COMMISSION CERTIFICATE

I hereby certify that this map was approved by the Riverside City Planning Commission at its meeting held on 9th day of August 1962.

Thomas M. Brown
Planning Director

CIVIL ENGINEERS' CERTIFICATE

I hereby certify that I am a Registered Civil Engineer of the State of California and that this map consisting of two (2) sheets, correctly represents a survey made under my supervision during Sept. 1962, and that all monuments shown hereon actually exist and their positions are correctly shown or shall be in position not later than one (1) year from the recordation of this map.

Dated SEPT. 28th 1962
Ernest N. Waller
Registered Civil Engineer No. 9876

CITY CLERK'S CERTIFICATE

I, V. J. Strohecker, City Clerk of the City of Riverside, California, hereby certify that an underlying satisfactory to the Council of said City, guaranteeing the construction of required street improvements in this subdivision was approved and filed in my office prior to the final acceptance of this subdivision map.

IN WITNESS WHEREOF, I have hereunto set my hand and affixed my official seal of the City of Riverside, California, on this 16th day of October 1962.
Virginia J. Strohecker
City Clerk of the City of Riverside, California

CITY TREASURER'S CERTIFICATE

I hereby certify that according to the records of this office as of this date, the property shown on this map is not subject to any special assessments, bonds and/or liens which have not been paid in full. This certificate does not include any special assessments, the bonds of which have not yet become a lien upon said property, except a 15 year Improvement Bond, Series No. 459 issued under the Improvement Act of 1911

Dated Oct 10 1962

City Treasurer

STREET SUPERINTENDENT'S CERTIFICATE

I hereby certify that according to the records of this office the property shown on this map is not subject to any special assessments which have not been paid in full.

Dated Oct 10 1962

Street Superintendent.

TAX COLLECTOR'S CERTIFICATE

I hereby certify that according to the records of this office as of this date, there are no liens against the property shown on this map for unpaid state, county, municipal or local taxes or special assessments collected as taxes, ~~except taxes and special assessments now a lien, but not yet payable which are estimated at \$~~

Dated October 10th 1962

DONNA M. BOUER
County Tax Collector

By Edith Schumacher Deputy

RESOLUTION OF ACCEPTANCE

RESOLVED: That this map, consisting of two (2) sheets, be and the same is hereby accepted as the official map of TRACT NO. 2490, that the streets, public utility easements, sewer easements and storm drain easements hereon are hereby accepted as public streets, public utility easements, sewer easements, and storm drain easements, and the City Clerk is hereby authorized and directed to attest said map by signing her name thereto as City Clerk of the City of Riverside, California, and to affix the seal of said city thereto.

I hereby certify that the foregoing resolution was adopted by the Mayor and Council of the City of Riverside this 16th day of October, 1962

Virginia J. Strohecker
City Clerk of this City of
Riverside, California

TAX BOND CERTIFICATE

I hereby certify that a bond in the sum of has been filed with the Board of Supervisors of the County of Riverside, State of California, conditioned upon the payment of all taxes, State, County, Municipal or local and all special assessments collected as taxes, which at the time of filing of this map with the County Recorder are a lien against said property but not yet payable, and said bond has been duly approved by said Board of Supervisors.

Dated 1962

Gordon A. Pequegnat
County Clerk and ex-officio clerk
of the Board of Supervisors

By Deputy

2490
M.B. 45/5

M.B. 45/5

TRACT No 2490

Being a subdivision of a portion of
Lots 13, 14 Block E Arlington
Heights M.B. 2/12 and a portion of Lots
17 & 19 of Osborne Heights M.B. 12/39-
41 both Rec. of Riverside County
California in Sec. 11 T. 35, R. 5W

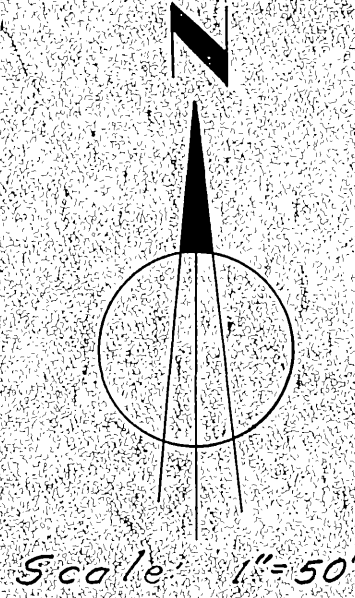
By
ALBERT A. WEBB ASSOCIATES
CIVIL ENGINEERS
July 1962

ENGINEER'S NOTES:

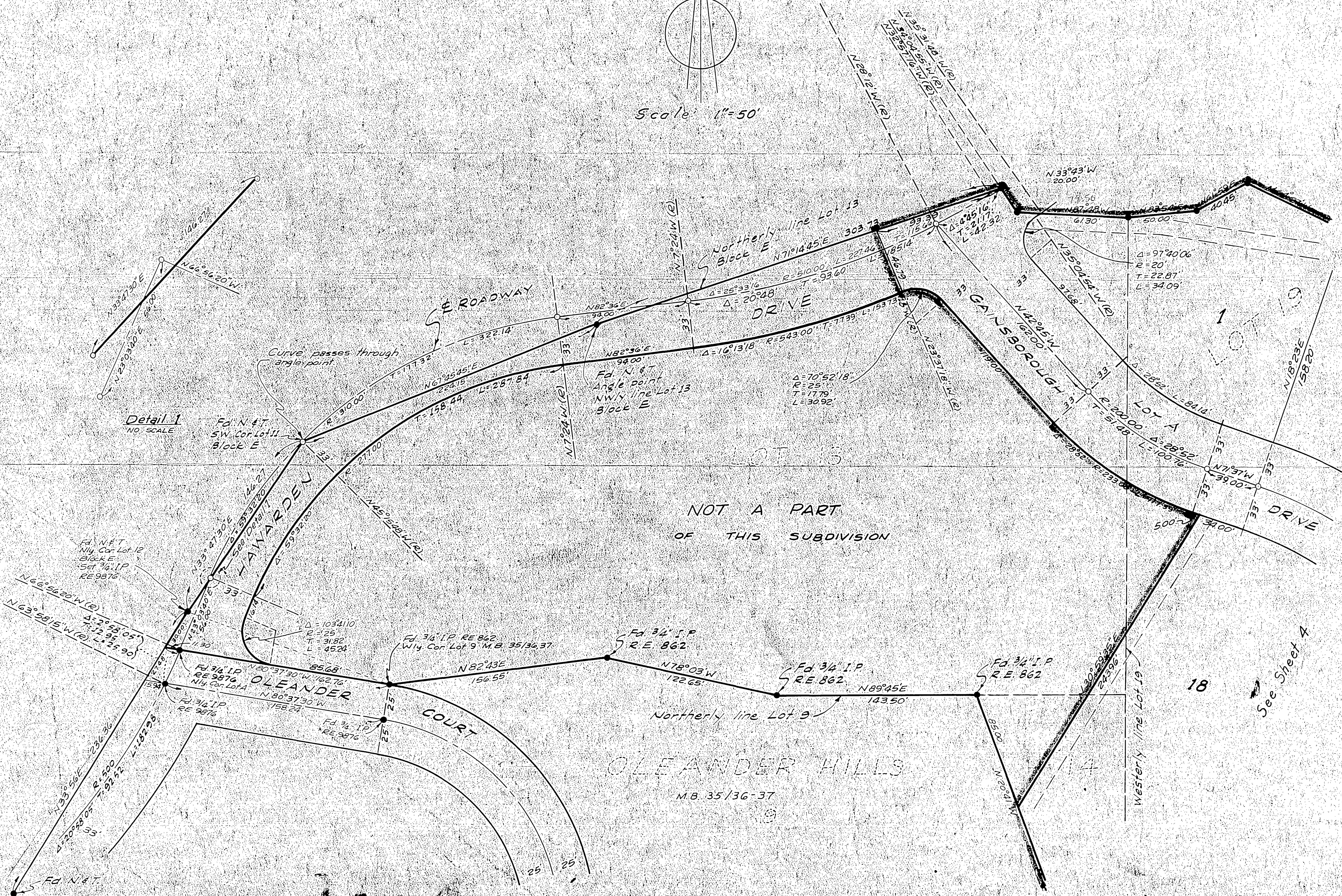
1. Basis of bearings is the centerline of
Oleander Court taken as $N80^{\circ}37'30''W$
as shown on Oleander Hills recorded in
Map Book 35 Pages 36137 Records of
Riverside County, California.

2. Found monuments as noted at all points
shown thus ●

3. Set $3/4''$ I.P. tagged R.E. 9876 at all lot corners
and at all points shown thus O unless
otherwise noted.



Scale: 1"=50'



Detail 1
NO SCALE

See Sheet 3

See Sheet 4

NOT A PART
OF THIS SUBDIVISION

OLEANDER HILLS
M.B. 35/36-37

2490-A
M.B. 45/6

2490-A
M.B. 45/6

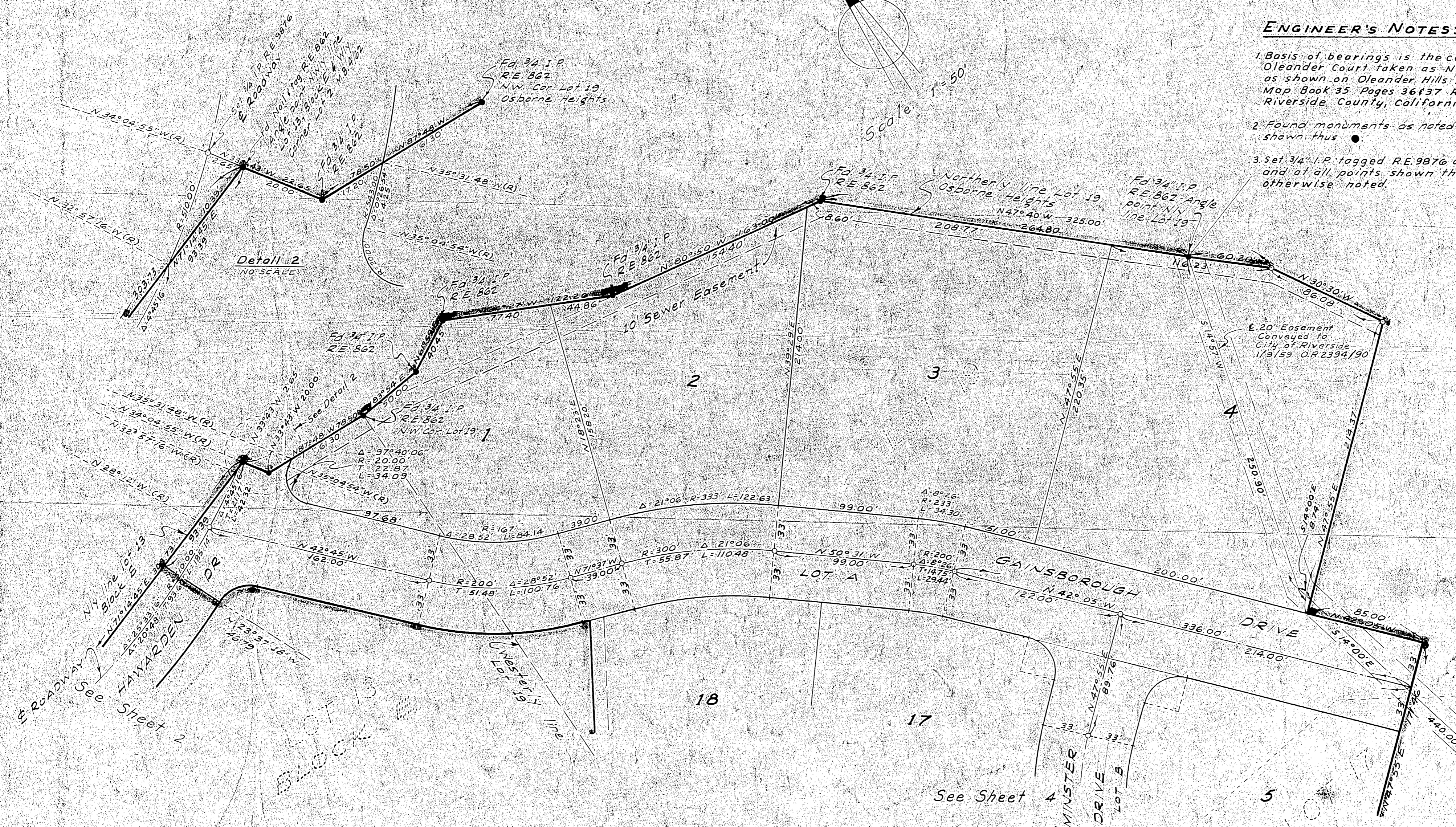
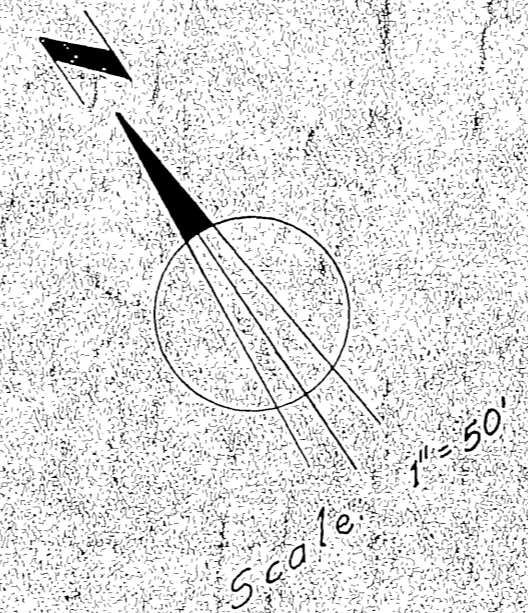
TRACT No 2490

Being a Subdivision of a portion of Lots 13, 14 Block E Arlington Heights M.B. 2112 and a portion of Lots 17, 19 of Osborne Heights M.B. 12/39-41 both Rec. of Riverside County California in Sec. 11 T. 35., R. 5W

By
ALBERT A. WEBB ASSOCIATES
CIVIL ENGINEERS
July 1962

ENGINEER'S NOTES:

1. Basis of bearings is the centerline of Oleander Court taken as N80°37'30"W as shown on Oleander Hills recorded in Map Book 35 Pages 36137 Records of Riverside County, California.
2. Found monuments as noted at all points shown thus ●
3. Set 3/4" I.P. tagged R.E. 9876 at all lot corners and at all points shown thus O unless otherwise noted.



Detail 2
NO SCALE

Detail 1
NO SCALE

2490-B
M.B. 45/17

2490-B
M.B. 45/17

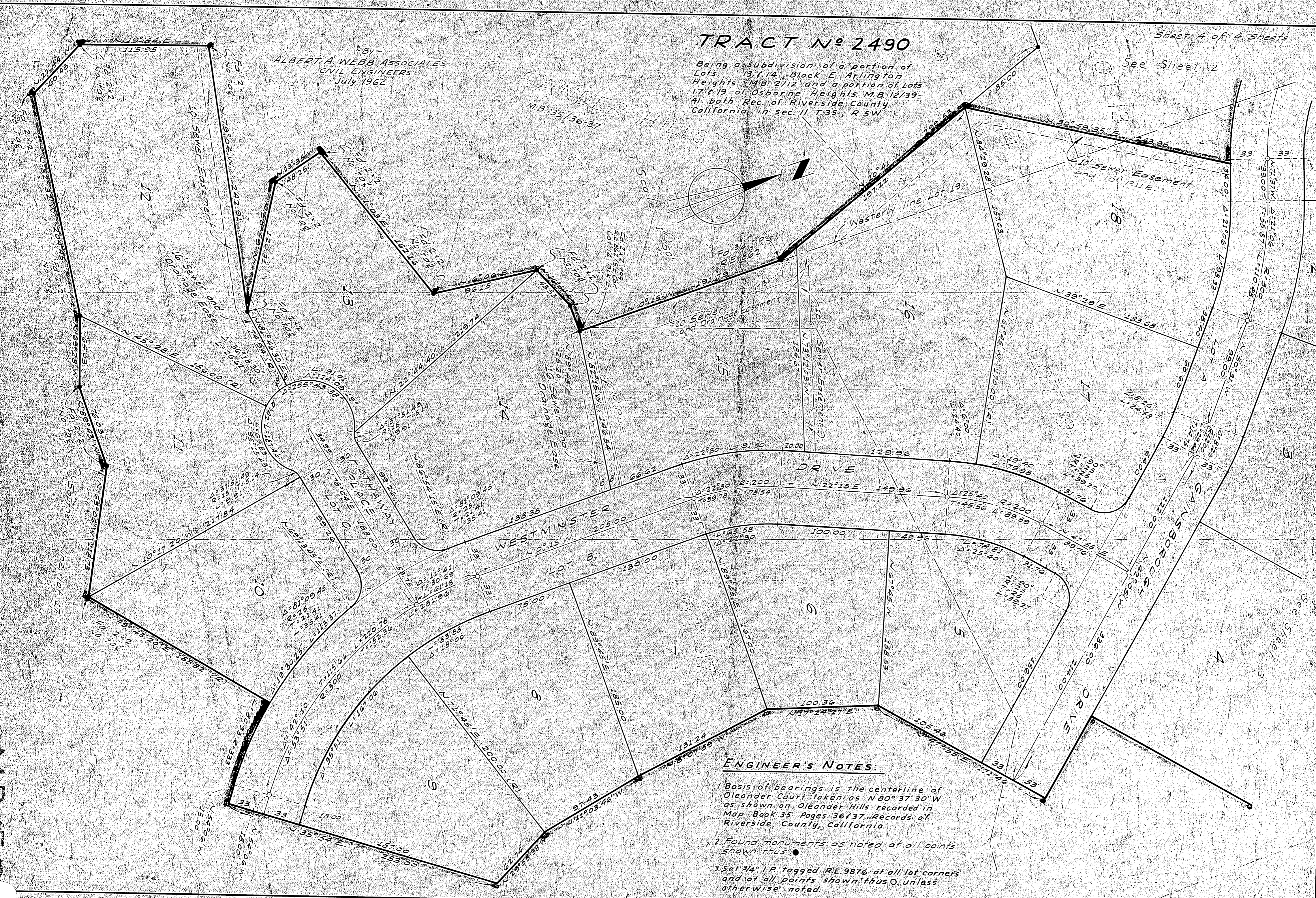
TRACT No 2490

Being a subdivision of a portion of Lots 13, 14 Block E Arlington Heights M.B. 2112 and a portion of Lots 17 & 19 of Osborne Heights M.B. 12/39-41 both Rec. of Riverside County California, in sec. 11 T.35, R.5W

By -
ALBERT A WEBB ASSOCIATES
CIVIL ENGINEERS
July 1962

Sheet 4 of 4 Sheets

See Sheet 2



ENGINEER'S NOTES:

1. Basis of bearings is the centerline of Oleander Court taken as N 80° 37' 30" W as shown on Oleander Hills recorded in Map Book 35 Pages 36 & 37, Records of Riverside County, California.
2. Found monuments as noted at all points shown thus ●
3. Set 3/4" I.P. tagged R.E. 9876 at all lot corners and at all points shown thus O unless otherwise noted.

2490-C
MB 45/8

2490-C
MB 45/8