

IN THE CITY OF RIVERSIDE

TRACT No. 2623

Being a Subdivision of Portions of Lots 2, 3, 7, 8 and 11 of the Church Subdivision as shown by map on file in Book 6 of Maps at page 55 thereof, Riverside County Records

By -
ALBERT A. WEBB ASSOCIATES
CIVIL ENGINEERS
MAY 1963

W.D. Balogh
Aaron B. Vaughn
AT: 11:40 AM
No. 5111
FEE: \$ 9.00
Filed By: County Clerk
Sub GEE: S.T. I. Co.

OWNERSHIP

We hereby certify that we are the owners of or have some right, title or interest in the land included within the subdivision shown hereon; that we are the only persons whose consent is necessary to pass a clear title to said land; that we consent to the making of said map and subdivision as shown within the colored border line and that we hereby offer for dedication to public use for street purposes Lots A to G inclusive and for construction and maintenance of public utilities the public utility easements designated as "5' P.U.E.", "10' P.U.E." and "5' x 25' P.U.E.", the sewer easements designated as "10' Sewer Easement" and "15' Sewer Easement", the drainage easements designated as "10' Drainage Easement" and "15' Drainage Easement" and the tree planting easements designated as "8' Tree Planting Easement."

COMMONWEALTH SAVINGS and LOAN ASSOCIATION,
a California Corporation.

Albert L. Green
Vice President
Albert L. Green
Asst. Secretary

CITY PLANNING COMMISSION

I hereby certify that this map is as approved by the Riverside City Planning Commission at its meeting held February 21, 1963

Thomas W. Brown
Planning Director, City of Riverside

DIRECTOR OF PUBLIC WORKS

I hereby certify that I have examined the within map, that the subdivision shown hereon is substantially the same as it appeared on the tentative map and any approved alterations thereof; that all provisions of Chapter 128 (Subdivision Map Act) Statutes of California 1943 and of Ordinance No. 1828 of the City of Riverside, California, and all amendments thereto have been complied with; that plans and specifications for drains, drainage, sewer and drainage works sufficient to protect all lots in said subdivision from flood or overflow have been approved by me; that all easements for sewers shown on said map are correct in form and contents and are approved; and I am satisfied that this map is technically correct.

Dated August 6, 1963

Alfred K. Theal
acting director of Public Works

STREET SUPERINTENDENT

I hereby certify that according to the records of this office, the property shown on this map is not subject to any special assessments which have not been paid in full.

Dated July 31, 1963

R.M. Jones
Street Superintendent

SUPERINTENDENT OF LIGHT AND WATER DEPT.

I hereby certify that the subdivider named on this map has deposited with the Water Department of the City of Riverside sufficient funds to cover the cost of installing all necessary fire hydrants together with all water mains and laterals to the curb line on all streets shown on said map; that all P.U.E.s shown on this map are sufficient for all requirements of the Electric Light and Water Departments of the City of Riverside and for the Department of Public Utilities of said City.

Dated August 1, 1963

Everett C. Fox
Superintendent of Light and Water Dept.
City of Riverside, California

CITY TREASURER

I hereby certify that according to the records of this office as of this date, the property shown on this map is not subject to any special assessments, bonds and/or liens which have not been paid in full.

This certificate does not include any special assessments the bonds of which have not become a lien upon said property.

Dated July 31, 1963

J. B. Miller
City Treasurer

CITY CLERK

I, V. J. STROHECKER, City Clerk of the City of Riverside, California, hereby certify that an undertaking satisfactory to the Council of said City guaranteeing the construction of required street improvements in this subdivision was approved and filed in my office prior to the final acceptance of this subdivision map. IN WITNESS WHEREOF, I have hereunto set my hand and affixed the official seal of the City of Riverside, State of California this 6 day of August 1963.

V. J. STROHECKER
City Clerk of the City of Riverside, California

By Jean D. Black
Acting City Clerk

RESOLUTION OF ACCEPTANCE

RESOLVED: That this map, consisting of 3 sheets, be and the same is hereby accepted as the official map of TRACT No. 2623 and the streets, public utility easements, sewer easements, drainage easements and tree planting easements hereon are hereby accepted as public streets, public utility easements, sewer easements, drainage easements and tree planting easements, and the City Clerk is hereby authorized and directed to attest said map by signing her name thereto as City Clerk of the City of Riverside, State of California, and affix the official seal of said City thereto. I hereby certify that the foregoing resolution was accepted by the Mayor and Council of the City of Riverside this 6 day of August 1963.

V. J. STROHECKER
City Clerk of the City of Riverside, California

By Jean D. Black
Acting City Clerk

TAX COLLECTOR

I hereby certify that according to the records of this office as of this date, there are no liens against the property shown on the within map for unpaid State, County, Municipal or Local taxes or special assessments collected as taxes, except taxes and special assessments collected as taxes now a lien but not yet payable, which are estimated to be \$ 4000.00.

Dated July 31, 1963

Donna M. Bouer, County Tax Collector.
By Patricia Schumacher Deputy

TAX BOND

I hereby certify that a bond in the sum of \$ 4000.00 has been executed and filed with the Board of Supervisors of the County of Riverside, California, conditioned upon the payment of all taxes, State, County, Municipal or Local, and all special assessments collected as taxes which at the time of filing of this map with the County Recorder are a lien against said property but not yet payable and said bond has been duly approved by said Board of Supervisors.

Dated August 12, 1963

Donald P. Sullivan
County Clerk and ex-officio
Clerk of the Board of Supervisors
By [Signature] Deputy

CIVIL ENGINEER

I hereby certify that I am a Registered Civil Engineer of the State of California and that this map consisting of 3 sheets correctly represents a survey made under my supervision during 1963; that all monuments shown hereon actually exist and their positions are correctly shown or will be in position within one (1) year from the recordation of this map.

Dated 7/1/63

Albert N. Webb
Registered Civil Engineer No. 9876

ACKNOWLEDGEMENT

STATE OF CALIFORNIA } ss.
COUNTY OF LOS ANGELES }

On this 30th day of JULY, 1963, before me, the undersigned, a Notary Public in and for said County and State, personally appeared NORMAN M. REIL and ALBERT L. GREEN, known to me to be the VICE PRESIDENT and ASSISTANT SECRETARY respectively of the corporation that executed the within instrument and known to me to be the persons who executed the same on behalf of the corporation therein named and acknowledged to me that such corporation executed the same.

WITNESS my hand and official seal.

John W. Miller
Notary Public in and for said
County and State

My commission expires December 15, 1965.

M.B. 47/62

M.B. 47/62

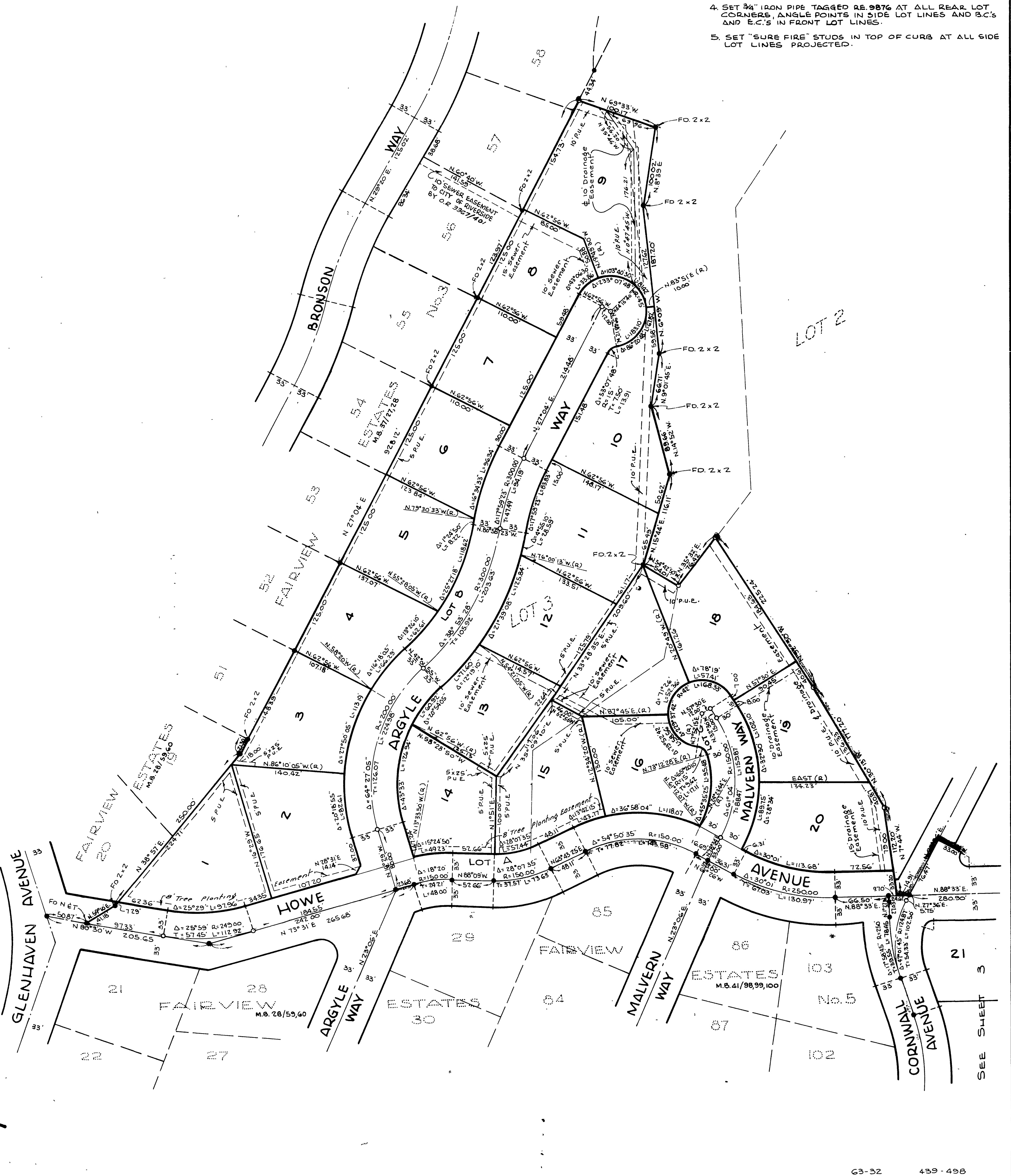
SHEET 2 OF 3
IN THE CITY OF RIVERSIDE
TRACT NO. 2623
BEING A SUBDIVISION OF PORTIONS
OF LOTS 2, 3, 7, 8 AND 11 OF THE
CHURCH SUBDIVISION AS RECORDED
IN BOOK 6 OF MAPS, PAGE 55 AND
A PORTION OF LOT A OF VICTORIA
WOODS UNIT NO. 2 RECORDED IN BOOK
40 OF MAPS, PAGES 91, 92 AND 93
RIVERSIDE COUNTY RECORDS.

BY
ALBERT A. WEBB ASSOCIATES
CIVIL ENGINEERS
RIVERSIDE, CALIFORNIA
MAY 1963

ENGINEER'S NOTES:

1. BASIS OF BEARINGS IS THE SOUTHEASTERLY LINE OF LOTS 51 THRU 58 OF FAIRVIEW ESTATES NO. 3 TAKEN AS N. 27° 04' E AS SAME IS SHOWN BY MAP RECORDED IN BOOK 37 OF MAPS, PAGES 27 AND 28, RIVERSIDE COUNTY RECORDS.
2. FOUND 3/4" IRON PIPE TAGGED R.E. 9876 AT ALL POINTS SHOWN THUS ●, UNLESS OTHERWISE NOTED.
3. SET 3/4" IRON PIPE TAGGED R.E. 9876 AT ALL POINTS SHOWN THUS ○, UNLESS OTHERWISE NOTED.
4. SET 3/4" IRON PIPE TAGGED R.E. 9876 AT ALL REAR LOT CORNERS, ANGLE POINTS IN SIDE LOT LINES AND B.C.'S AND E.C.'S IN FRONT LOT LINES.
5. SET "SURE FIRE" STUDS IN TOP OF CURB AT ALL SIDE LOT LINES PROJECTED.

SCALE 1" = 80'



M.B. 47/63

SEE SHEET 3

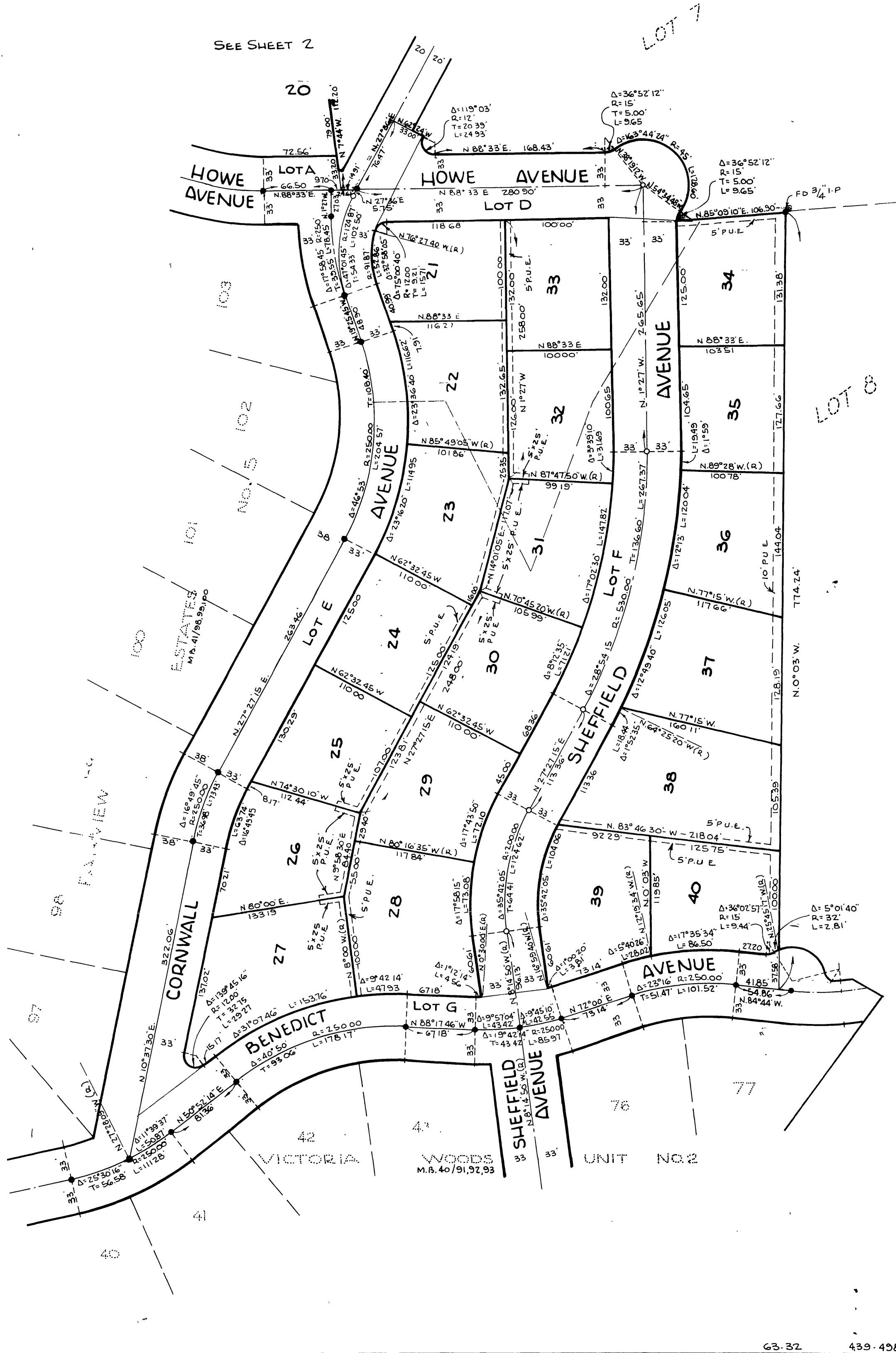
SHEET 3 OF 3
IN THE CITY OF RIVERSIDE
TRACT NO. 2623
BEING A SUBDIVISION OF PORTIONS
OF LOTS 2, 3, 7, 8 AND 11 OF THE
CHURCH SUBDIVISION AS RECORDED
IN BOOK 6 OF MAPS, PAGE 55 AND
A PORTION OF LOT A OF VICTORIA
WOODS UNIT NO. 2 RECORDED IN BOOK
40 OF MAPS, PAGES 91, 92 AND 93
RIVERSIDE COUNTY RECORDS.

BY
ALBERT A. WEBB ASSOCIATES
CIVIL ENGINEERS
RIVERSIDE, CALIFORNIA
MAY 1963

ENGINEER'S NOTES:

1. BASIS OF BEARINGS IS THE SOUTHEASTERLY LINE OF LOTS 51 THRU 58 OF FAIRVIEW ESTATES NO. 3 TAKEN AS N. 27° 04' E AS SAME IS SHOWN BY MAP RECORDED IN BOOK 37 OF MAPS, PAGES 27 AND 28, RIVERSIDE COUNTY RECORDS.
2. FOUND 3/4" IRON PIPE TAGGED R.E. 9876 AT ALL POINTS SHOWN THUS ●, UNLESS OTHERWISE NOTED.
3. SET 3/4" IRON PIPE TAGGED R.E. 9876 AT ALL POINTS SHOWN THUS ○, UNLESS OTHERWISE NOTED.
4. SET 3/4" IRON PIPE TAGGED R.E. 9876 AT ALL REAR LOT CORNERS, ANGLE POINTS INSIDE LOT LINES AND B.C.'S AND E.C.'S IN FRONT LOT LINES.
5. SET "SURE FIRE" STUDS IN TOP OF CURB AT ALL SIDE LOT LINES PROJECTED.

SCALE 1" = 80'



MB 47/64