

48/21
M.B. 48/21

TRACT NO. 2693

IN THE CITY OF RIVERSIDE
BEING A SUBDIVISION OF A PORTION OF THE S.W. 1/4 OF THE S.W. 1/4
SECTION 29, T.2 S., R. 4 W., S.B.B. AND M.

SHEET 1 OF 2 SHEETS

HAL HALLDIN ENGINEERING CO.
CIVIL ENGINEER

JULY 1963

W. D. BALOGH
Aam B Jangler
AT: 2:50 P.M.
FEE: \$ 7.00
Filed By: COUNTY CLERK
No.
Sub. GTEE: S.T.I. Co.

OWNERSHIP

We hereby certify that we are the owners of or have some right, title or interest in the land included within the subdivision hereon; that we are the only persons whose consent is necessary to pass a clear title to said land; that we consent to the making and recording of said map and subdivision as shown within the colored border line and that we hereby offer for dedication for public use for street purposes Lots A to C inclusive and for the construction and maintenance of public utilities the public utility easements designated "5' P.U.E.", "10' P.U.E." and "5'x25' P.U.E." and for the construction and maintenance of water lines the easement designated "10' Water Easement," and further, the undersigned owners, our successors and assigns in interest, hereby release and relinquish to the City of Riverside, a Municipal Corporation, any and all abutters rights, including access right, appurtenant to lots 1, 50, 51 and 52 as shown on the annexed map, over and across Lot A (Canyon Crest Drive) adjoining said lots 1, 50, 51 and 52. In the event of any change in alignment or width of Canyon Crest Drive results in the vacation of lot A within said subdivision, then such vacation proceedings shall automatically terminate the rights hereby released and relinquished and said rights shall again become appurtenant to said lots 1, 50, 51 and 52. We also hereby offer for dedication for public use for landscaping purposes the easements designated "landscaping easement".

HOMEOWNERS,

a California Corporation

Harold W. Heers Jr. President
Linda L. Heers Secretary

STATE OF CALIFORNIA, S.S.
COUNTY OF RIVERSIDE, S.S.

On this 30th day of October, 1963, before me, the undersigned a Notary Public in and for said County and State, personally appeared Harold W. Heers Jr. known to me to be the person who executed the within instrument, and he acknowledged to me that he executed the same.

WITNESS my hand and official Seal

Notary Public in and for said County and State

My commission expires

STATE OF CALIFORNIA, S.S.
COUNTY OF RIVERSIDE, S.S.

In this 30th day of October, 1963, before me, the undersigned a Notary Public in and for said County and State personally appeared Harold W. Heers Jr. known to me to be the President, and Linda L. Heers, known to me to be the Secretary of the corporation that executed the within instrument, and known to me to be the persons who executed the within instrument on behalf of the corporation therein named, and acknowledged to me that such corporation executed the same, and acknowledged to me that such corporation executed the within instrument pursuant to its by-laws or a resolution of its board of directors

Witness my hand and official Seal Dorothy Murrell

Notary Public in and for said County and State

My Commission expires 8-13-65

CITY PLANNING COMMISSION

I hereby certify that this map is as approved by the Riverside City Planning Commission at its meeting held July 5, 1963.

Thomas M. Brown
Planning Director, City of Riverside

DIRECTOR OF PUBLIC WORKS

I hereby certify that I have examined the within map; that the subdivision shown hereon is substantially the same as it appeared on the tentative map and any approved alterations thereof; that all provisions of Chapter 128 (Subdivision Map Act) Statutes of California, 1943, and of Ordinance No 1328 of the City of Riverside, California, and all amendments thereto have been complied with; that plans and specifications for drains, drainage, sewer and drainage works sufficient to protect all lots in said subdivision from flood or overflow have been approved by me; that all easements for sewers shown on said map are correct in form and contents and are approved; and I am satisfied that this map is technically correct.

Dated Nov 5, 1963 Alfred B. Heiser DIRECTOR OF PUBLIC WORKS

STREET SUPERINTENDENT

I hereby certify that according to the records of this office, the property shown on this map is not subject to any special assessments which have not been paid in full.

Dated 10/31/63, 1963. P. W. Stone Street Superintendent

SUPERINTENDENT OF LIGHT AND WATER DEPARTMENT

I hereby certify that the subdivider named on this map has deposited with the Water Department of the City of Riverside sufficient funds to cover the cost of installing all necessary fire hydrants together with all water mains and laterals to the curb line on all streets shown on said map; that all P.U.E. shown on this map are sufficient for all requirements of the Electric, Light and Water Departments of the City of Riverside and for the Department of Public Utilities of said City.

Dated October 31, 1963. Everett C. Rossi by Don Campbell Superintendent of Light and Water Dept., City of Riverside, California.

CITY TREASURER

I hereby certify that according to the records of this office as of this date, the property shown on this map is not subject to any special assessments, bonds and/or liens which have not been paid in full.

This certificate does not include any special assessments the bonds of which have not become a lien upon said property.
Dated Oct 31, 1963. R. S. Miller CITY TREASURER

CITY CLERK

I, W. D. Balogh, City Clerk of the City of Riverside, California, hereby certify that an undertaking satisfactory to the Council of said City guaranteeing the construction of required street improvements in this subdivision was approved and filed in my office prior to the final acceptance of this subdivision map.
IN WITNESS WHEREOF, I have hereunto set my hand and affixed the official seal of the City of Riverside, State of California, this 30th day of October, 1963.

W. D. Balogh
City Clerk of the City of Riverside, California.

RESOLUTION OF ACCEPTANCE

RESOLVED: That this map consisting of two (2) sheets be, and the same is hereby accepted as the official map of TRACT No 2693 and the streets and easements are hereby accepted as public streets and easements and the City Clerk is hereby authorized and directed to attest said map by signing name thereto as City Clerk of the City of Riverside, State of California, and affix the official seal of said City thereto.
I hereby certify that the foregoing resolution was adopted by the Mayor and Council of the City of Riverside this 30th day of October, 1963.

W. D. Balogh
City Clerk of the City of Riverside California

TAX COLLECTOR

I hereby certify that according to the records of this office as of this date, there are no liens against the property shown on the within map for unpaid State, County, Municipal or local taxes or special assessments collected as taxes, except taxes and special assessments collected as taxes now a lien but not yet payable, which are estimated to be \$.

Dated October 31st, 1963. Donna M. Bower County Tax Collector

By Edith H. Schenck Deputy

TAX BOND

I hereby certify that a bond to the sum of \$ has been executed and filed with the Board of Supervisors of the County of Riverside, California, conditioned upon the payment of all taxes, State, County, Municipal or Local, and all special assessments collected as taxes which at the time of filing of this map with the County Recorder are a lien against said property but not yet payable and said bond has been duly approved by said Board of Supervisors.

Dated , 1963. County Clerk and ex-officio Clerk of the Board of Supervisors

By Deputy

CIVIL ENGINEER

Harold Halldin hereby certifies that I am a Registered Civil Engineer of the State of California and that this map consisting of two (2) sheets correctly represents a survey made under my supervision during JULY of 1963; that all monuments shown hereon actually exist and their positions are correctly shown or shall be in position not later than one year from the recording of this map. The monuments are sufficient to retrace the survey and the survey is true and complete as shown. Dated September 4, 1963.

Harold A. Halldin
Registered Civil Engineer, No 9009

M.B. 48/21

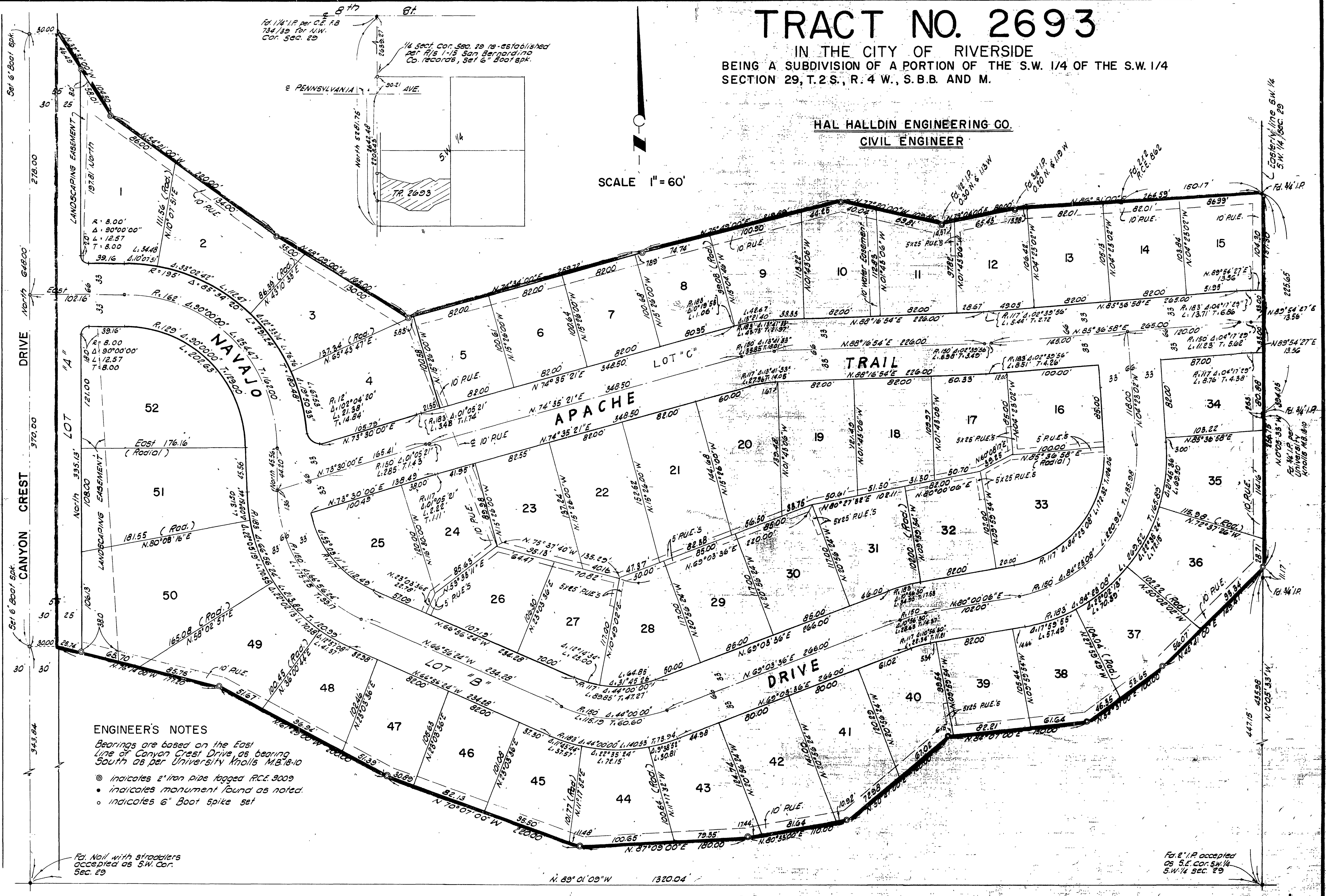
MB48/21

TRACT NO. 2693

IN THE CITY OF RIVERSIDE
BEING A SUBDIVISION OF A PORTION OF THE S.W. 1/4 OF THE S.W. 1/4
SECTION 29, T.2 S., R. 4 W., S.B.B. AND M.

HAL HALLDIN ENGINEERING CO.
CIVIL ENGINEER

SCALE 1" = 60'



ENGINEER'S NOTES

Bearings are based on the East Line of Canyon Crest Drive as bearing South as per University Knolls M.B. 18-10

- ⊙ indicates 2" iron pipe tagged R.C.E. 3009
- indicates monument found as noted.
- indicates 6" Boot spike set

Fd. Nail with straddlers accepted as S.W. Cor. Sec. 29

Fd. 2" I.P. accepted as S.E. cor. S.W. 1/4 S.W. 1/4 Sec. 29

M.B. 48/22

M.B. 48/22

MB 48/22