

# IN THE CITY OF RIVERSIDE TRACT N<sup>o</sup> 2602

BEING A SUBDIVISION OF A PORTION OF LOT 17 IN SECTION 19, T2S, R4W, S.B.B.E.M. AS SHOWN BY MAP OF LANDS OF EAST RIVERSIDE LAND COMPANY RECORDED IN BOOK 6 OF MAPS, PAGE 44, SAN BERNARDINO COUNTY RECORDS AND A PORTION OF MASSACHUSETTS AVENUE VACATED

—BY—  
**ALBERT A. WEBB ASSOCIATES**  
CIVIL ENGINEERS  
RIVERSIDE, CALIFORNIA  
DECEMBER, 1963

**FILED**  
ON JANUARY 31, 1964

At 9:00 A.M.  
W.D. BALOGH  
County Recorder  
By Born B. Vaughn  
Fee \$7.00  
No. \_\_\_\_\_  
Filed by County Clerk  
Sub. Rec. F.A.P. Co.

### OWNERSHIP

We hereby certify that we are the owners of or have some right, title or interest in the land included within the subdivision shown hereon; that we are the only persons whose consent is necessary to pass a clear title to said land; that we consent to the making of said map and subdivision as shown within the colored border line and we hereby offer for dedication for public use for street purposes Lots A to C inclusive and for construction and maintenance of public utilities the public utility easements designated as 10' R.U.E. and 5' SERIAL R.U.E. and further, the undersigned owners, our successors and assigns in interest, hereby release and relinquish to the City of Riverside, a Municipal Corporation, all rights of vehicular access appurtenant to Lots 1, 2, 3, 4, 5, 6, 7 and 20 as shown on the annexed map, on, over and across Canyon Crest Drive adjoining said Lots 1, 2, 3, 4, 5, 6, 7 and 20. In the event of any change of alignment or width of Canyon Crest Drive results in the vacating of Canyon Crest Drive, then such vacation proceedings shall automatically terminate the rights hereby released and relinquished and said rights shall again become appurtenant to said Lots 1, 2, 3, 4, 5, 6, 7 and 20. We also hereby dedicate to public use the easements designated as "16' sewer, drainage and wafer line easement" and "5' wafer line easement."

Don F. Walker, Jr.

### ACKNOWLEDGEMENT

State of California } s.s.  
County of Riverside }  
On this 10<sup>th</sup> day of January, 1964, before me, the undersigned, a Notary Public in and for said County and State, personally appeared Don F. Walker, Jr. known to me to be the person whose name is subscribed to the within instrument and he acknowledged to me that he executed the same.  
WITNESS my hand and official seal.

Delores E. Valenzuela  
Notary Public in and for said  
County and State

My Commission expires 9-30-66

### CITY PLANNING COMMISSION

I hereby certify that this map is as approved by the Riverside City Planning Commission at its meeting held Dec. 5, 1963

Thomas M. Brown  
Planning Director, City of Riverside

### DIRECTOR OF PUBLIC WORKS

I hereby certify that I have examined the within map; that the subdivision shown hereon is substantially the same as it appeared on the tentative map and any approved alterations thereof; that all provisions of Chapter 128 (Subdivision Map) Statutes of California, 1943, and of Ordinance N81328 of the City of Riverside, California, and all amendments thereto have been complied with; that plan and specifications for drains, drainage, sewer and drainage works sufficient to protect all lots in said subdivision from flood or overflow have been approved by me; that all easements for sewers shown on said map are correct in form and contents and are approved; and I am satisfied that this map is technically correct.

Dated Jan 31, 1964 Richard J. Treac  
City Director of Public Works

### STREET SUPERINTENDENT

I hereby certify that according to the records of this office the property shown on this map is not subject to any special assessments which have not been paid in full.

Dated Jan 8, 1964 R. W. Davis  
Street Superintendent

### SUPERINTENDENT OF LIGHT AND WATER DEPT.

I hereby certify that the subdivider named on this map has deposited with the Water Department of the City of Riverside sufficient funds to cover the cost of installing all necessary fire hydrants together with all water mains and laterals to the curb line on all streets shown on said map; that all P.U.E.'s shown on this map are sufficient for all requirements of the Electric Light and Water Departments of the City of Riverside and for the Department of Public Utilities of said City.

Dated Jan 23, 1964 E. C. Ross by J. H. Hagan  
Superintendent of Light and Water Dept., City of Riverside, California.

### CIVIL ENGINEER

I hereby certify that I am a Registered Civil Engineer of the State of California and that this map consisting of 2 sheets correctly represents a survey made under my supervision during November of 1963; that all monuments shown hereon actually exist and their positions are correctly shown or will be in place within one (1) year from the recordation of this map. The monuments will be sufficient to enable the survey to be retraced. The survey is true and complete as shown.

Dated JAN 7, 1964 Samuel N. Webb  
Registered Civil Engineer N<sup>o</sup> 9576

### CITY CLERK

I, V. J. STROHECKER, City Clerk of the City of Riverside, California, hereby certify that an undertaking satisfactory to the council of said City guaranteeing the construction of required street improvements in this subdivision was approved and filed in my office prior to the final acceptance of this subdivision map.

In WITNESS WHEREOF I have hereunto set my hand and affixed the official seal of the City of Riverside, State of California, this 31<sup>st</sup> day of January, 1964

City Clerk of the City of Riverside, Calif.  
By Virginia J. Strohecker

### RESOLUTION OF ACCEPTANCE

RESOLVED: That this map consisting of 2 sheets be, and the same is hereby accepted as the official map of TRACT N<sup>o</sup> 2602 and the streets and easements are hereby accepted as public streets and easements and the City Clerk is hereby authorized and directed to attest said map by signing her name thereto as City Clerk of the City of Riverside, State of California, and affix the official seal of said City thereto.

I hereby certify that the foregoing resolution was accepted by the Mayor and Council of the City of Riverside this 29<sup>th</sup> day of January, 1964

Virginia J. Strohecker  
City Clerk of the City of Riverside, Calif.

### TAX COLLECTOR

I hereby certify that according to the records of this office as shown of this date, there are no liens against the property shown on the within map for unpaid State, County, Municipal or local taxes or special assessments collected as taxes, except taxes and special assessments collected as taxes now a lien but not yet payable, which are estimated to be \$ \_\_\_\_\_.

Dated Jan 24<sup>th</sup>, 1964  
DONNA M. BOUER, County Tax Collector  
By Edith Schermerhorn Deputy

### TAX BOND

I hereby certify that a tax bond in the sum of \$ \_\_\_\_\_ has executed and filed with the Board of Supervisors of the County of Riverside, California, conditioned upon the payment of all taxes, State, County, Municipal or local, and all special assessments collected as taxes which at the time of filing of this map with the County Recorder are a lien against said property but not yet payable and said bond has been duly approved by said Board of Supervisors.

Dated \_\_\_\_\_, 1964  
GONALD D. SULLIVAN  
County Clerk and ex-officio Clerk  
of the Board of Supervisors  
By \_\_\_\_\_ Deputy

### CITY TREASURER

I hereby certify that according to the records of this office as of this date, the property shown on this map is not subject to any special assessments, bonds and/or liens which have not been paid in full. This certificate does not include any special assessments the bonds of which have not become a lien against said property.

Dated JAN 9, 1964 R. B. Miller by H. Brewer  
City Treasurer

M.B. 49/17  
2602

M.B. 49/17

M.B. 49/17  
2602

MISSION BLUE PRINT CO.

491  
18

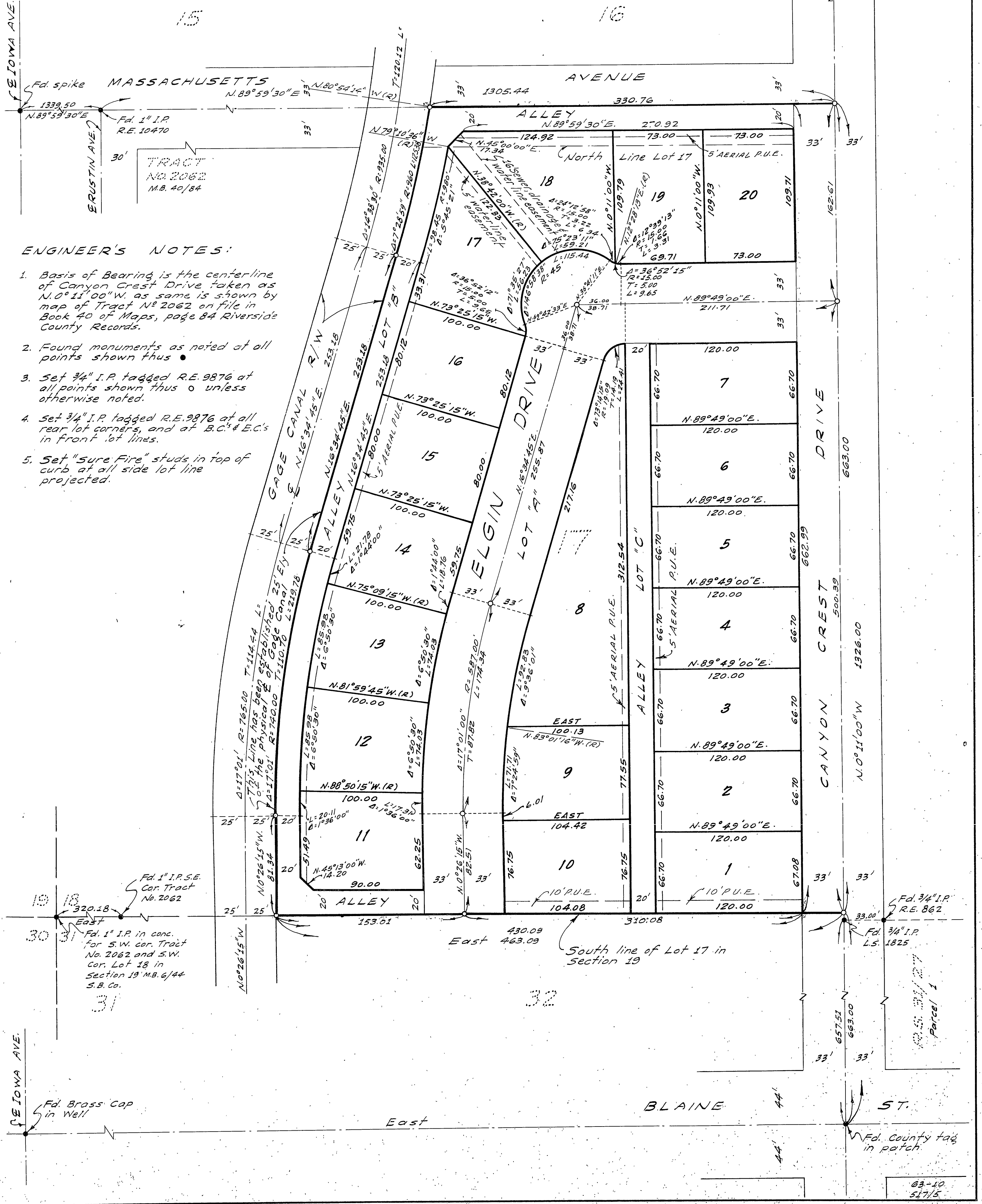
TRACT No 2062

Being a subdivision of a portion of Lot 17 in Section 19, T.25, R.4W, S.B.B. & M. as shown by Map of Lands of East Riverside Land Company, recorded in Book 6 of Maps page 44, San Bernardino County Records and a portion of Massachusetts Avenue vacated.

ALBERT A WEBB ASSOCIATES  
CIVIL ENGINEERS  
NOVEMBER, 1963 RIVERSIDE, CALIF.

Scale: 1"=50'

Fd. 2x2 for  
N.E. cor.  
Sec 19



ENGINEER'S NOTES:

1. Basis of Bearing is the centerline of Canyon Crest Drive, taken as N.0°11'00"W. as same is shown by map of Tract No 2062 on file in Book 40 of Maps, page 84 Riverside County Records.
2. Found monuments as noted at all points shown thus ●
3. Set 3/4" I.P. tagged R.E. 9876 at all points shown thus ○ unless otherwise noted.
4. Set 3/4" I.P. tagged R.E. 9876 at all rear lot corners, and at B.C.'s & E.C.'s in front lot lines.
5. Set "sure Fire" studs in top of curb at all side lot line projected.

63-10  
517/5