

IN THE CITY OF RIVERSIDE TRACT No 2801

FILED
ON SEPTEMBER 2, 1964

BEING A SUBDIVISION OF A PORTION OF THE NE 1/4 OF SECTION 32 OF T.2S., R.5W. S.B.B. & M.

At 3:50 P.M.
W. D. BALOGH
County Recorder

AUGUST 1964 SCALE: 1"=50'
ALBERT A. WEBB ASSOCIATES
Civil Engineers

By Clara B. Vaughn
Deputy
Fee \$ 7.00
No. 117978
Filed by City Clerk
Sub Case: T-1-T-Co.

OWNERSHIP

We hereby certify that we are the owners of, or have some right, title or interest in the land included within the subdivision shown on the annexed map; that we are the only persons whose consent is necessary to pass a clear title to said land and we hereby consent to the making and filing of said subdivision and map as shown within the colored border line, and we hereby offer for dedication to public use for street purposes, Lots "A" to "C" inclusive, for pedestrian walks Lot "D" and for construction and maintenance of public utilities the public utility easements designated as "5' P.U.E." and "10' P.U.E."

Vernon C. Holt
Single man.

CITY PLANNING COMMISSION

I hereby certify that this map is as approved by the Riverside City Planning Commission at its meeting held October 17, 1963.
Frank W. Yall
Acting Planning Director, City of Riverside

DIRECTOR OF PUBLIC WORKS

I hereby certify that I have examined the within map; that the subdivision shown hereon is substantially the same as it appeared on the tentative map and any approved alterations thereof; that all provisions of Chapter 128 (Subdivision Map Act), Statutes of California 1943, and of Ordinance No 1328 of the City of Riverside, California, and all amendments thereto have been complied with; that plans and specifications for drain, drainage, sewer and drainage works sufficient to protect all lots in said subdivision from flood or overflow have been approved by me; that all easements for sewers and drains shown on said map are correct in form and contents and are approved; and I am satisfied that this map is technically correct.

Dated August 19 1964 J. Mantush
Director of Public Works

CITY CLERK

I, V.J. STROHECKER, City Clerk of the City of Riverside, California, hereby certify that an undertaking satisfactory to the council of said City guaranteeing the construction of required street improvements in this subdivision was approved and filed in my office prior to the final acceptance of this subdivision map. IN WITNESS WHEREOF I have hereunto set my hand and affixed the official seal of the City of Riverside, California this 25 day of Aug. 1964.

City Clerk of the City of Riverside, Calif.
By Virginia Strohecker

RESOLUTION OF ACCEPTANCE

RESOLVED: That this map consisting of two (2) sheets be, and the same is hereby accepted as the official map of TRACT No 2801 and the streets, pedestrian walks and public utility easements hereon are hereby accepted as public streets, pedestrian walks and public utility easements and the City Clerk is hereby authorized and directed to attest said map by signing her name there-to as City Clerk of the City of Riverside, California, and to affix the seal of said City thereto.

I hereby certify that the foregoing resolution was accepted by the Mayor and Council of the City of Riverside this 25 day of Aug. 1964.
Virginia Strohecker
City Clerk of the City of Riverside, Calif.

STATE OF CALIFORNIA } S.S.
COUNTY OF RIVERSIDE }

On this day of 1964, before me, the undersigned, a notary Public in and for said County and State personally appeared and known to me to be the and respectively of the Corporation that executed the within instrument and known to me to be the persons who executed the same on behalf of the corporation therein named, and acknowledged to me that such corporation executed the same as trustee.
Witness my hand and official seal.

Notary Public in and for said County and State

STREET SUPERINTENDENT

I hereby certify that according to the records of this office the property shown on this map is not subject to any special assessments which have not been paid in full.

Dated Aug 12 1964 P. U. T. S.
Street Superintendent

SUPERINTENDENT OF LIGHT AND WATER DEPT.

I hereby certify that the subdivider named on this map has deposited with the Water Department of the City of Riverside sufficient funds to cover the cost of installing all necessary fire hydrants, together with all water mains and laterals to the curb line on all streets shown on this map; and that all public utility easements shown on this map are sufficient for all requirements of the Electric Light and Water Department of the City of Riverside and for the Department of Public Utilities of said City.

Dated Aug. 13 1964 Everett C. Ross
Superintendent of Light and Water Department of the City of Riverside

CIVIL ENGINEER

I hereby certify that I am a Registered Civil Engineer of the State of California and that this map consisting of two (2) sheets correctly represents a survey made under my supervision during September 1963; that all monuments shown hereon actually exist and their positions are correctly shown or will be in place within one (1) year from the recording of this map. The monuments will be sufficient to enable the survey to be retraced. The survey is true and complete as shown.

Dated APRIL 13 1964 Ernest N. Webb
Registered Civil Engineer No 9876

TAX COLLECTOR

I hereby certify that according to the records of this office as of this date there are no liens against the property shown on this map for unpaid State, County, municipal or local taxes or special assessments collected as taxes, except taxes and special assessments now a lien but not yet payable which are estimated to be \$ 500.00.

Dated August 11 1964 DONNA M. BOYER, County Tax Collector
By M. Stode Deputy

TAX BOND

I hereby certify that a bond in the sum of \$ 500.00 has been filed with the Board of Supervisors of the County of Riverside, State of California, conditioned on the payment of all taxes, State, County, municipal or local and all special assessments collected as taxes which at the time of filing of this map with the County Recorder are a lien against said property but not yet payable, and said bond has been duly approved by said Board of Supervisors.

Dated August 31 1964 DONALD D. SULLIVAN
County Clerk and ex-officio Clerk of the Board of Supervisors
By M. A. Keller Deputy

CITY TREASURER

I hereby certify that according to the records of this office as of this date, the property shown on this map is not subject to any special assessments, bonds and/or liens which have not been paid in full. This certificate does not include any special assessments the bonds of which have not become a lien against said property.

Dated August 11 1964 H. E. Brewer
City Treasurer

ACKNOWLEDGEMENT

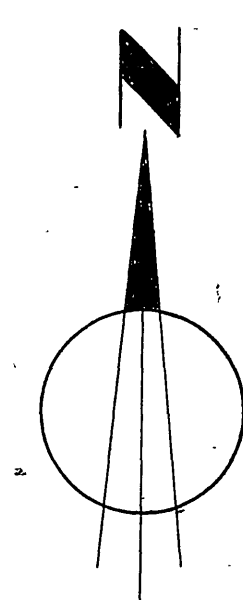
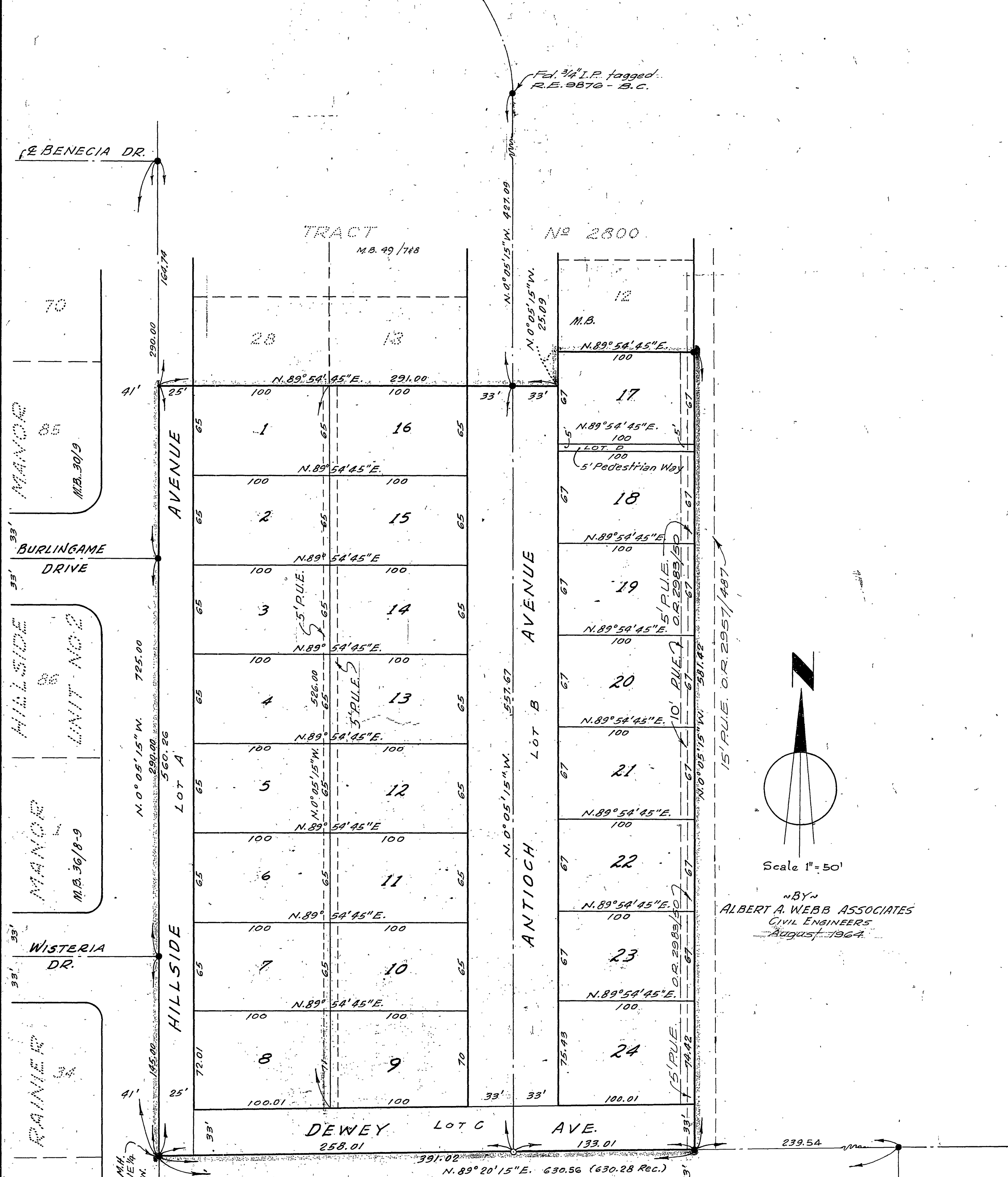
State of California } S.S.
County of Riverside }

On August 14, 1964, before me, the undersigned, a Notary Public in and for said County and State, personally appeared Vernon C. Holt known to me to be the person whose name is subscribed to the within instrument and acknowledged that he executed the same.
WITNESS my hand and official seal.

Dorothea DePaugh
Notary Public in and for said County and State
My commission expires 11-5-66

TRACT NO 2801

Being a subdivision of a portion of the NE 1/4, Sec. 32, T.25, R.5W, S.B.B. & M.



BY
 ALBERT A. WEBB ASSOCIATES
 CIVIL ENGINEERS
 August, 1964

HEERS SUBDIVISION NO 6 M.B. 25/70

ENGINEER'S NOTES

1. Basis of Bearings is the centerline of HILLSIDE AVE. taken as N. 0° 05' 15" W. as shown on Map of TRACT NO. 2800, or File in Book 49 of Maps, pages 7 & 8, Riverside County Records.
2. Found 3/4" I.P. at all points shown, thus • unless otherwise noted.
3. Set 3/4" I.P. R.E. 9876 at all points shown, thus ○ unless otherwise noted.
4. Set 2x2" Redwood stakes R.E. 9876 at all lot corners unless otherwise noted.