

IN THE CITY OF RIVERSIDE

TRACT 3045

BEING A SUBDIVISION OF A PORTION OF SECTION 15, T. 3 S. R. 6 W., S. B. B. AND M., AS SHOWN ON MAP OF A SUBDIVISION OF RANCHO LA SIERRA, M. B. 6/70, RECORDS OF RIVERSIDE COUNTY, CALIFORNIA.

MAY 1964

SCALE 1" = 50'

J. F. DAVIDSON, C. E.

SHEET 1 OF 2 SHEETS

FILED
On JANUARY 14, 1965

At 2:30 P. M.

W.D. BALOGH
County Recorder

By Anna B. O'Neil
Deputy

Fee \$ 7.00

No. 1010

Filed by City Clerk

Sub. GTR: T. I. T. Co

OWNERSHIP

We hereby certify that we are the owners of or have some right, title or interest in the land included within the subdivision shown hereon; that we are the only persons whose consent is necessary to pass a clear title to said land; that we consent to the making and recording of said map and subdivision as shown within the colored border line and that we hereby offer for dedication for public use for street purposes Lots A to C inclusive and for the construction and maintenance of all public utilities, the six and ten foot easements shown by dashed lines and designated "6' P.U.E." and "10' P.U.E." We also offer for dedication for public use for tree planting purposes the five foot easements shown by dashed lines and designated "5' Tree Planting Easement".

By Anthony La Preste By Grace La Preste

STATE OF CALIFORNIA } S.S.
COUNTY OF RIVERSIDE }

On this 14th day of October 1964 before me, the undersigned, a Notary Public in and for said county and state, personally appeared Anthony La Preste and Grace La Preste known to me to be the persons whose names are subscribed to the within instrument and acknowledged to me that they executed the same.

WITNESS my hand and official seal.

J. Earl Roberts
Notary Public in and for said county and state

My Commission Expires August 17, 1966

CITY PLANNING COMMISSION

I hereby certify that this map is as approved by the Riverside City Planning Commission at its meeting held JUNE 4TH, 1964.

Thomas M. Brown
Planning Director, City of Riverside

DIRECTOR OF PUBLIC WORKS

I hereby certify that I have examined the within map; that the subdivision shown hereon is substantially the same as it appeared on the tentative map and any approved alterations thereof; that all provisions of Chapter 128 (Subdivision Map Act) Statutes of California, 1943, and of Ordinance No 1328 of the City of Riverside, California, and all amendments thereto have been complied with; that plans and specifications for drains, drainage, sewer and drainage works sufficient to protect all lots in said subdivision from flood or overflow have been approved by me; that all easements for sewers shown on said map are correct in form and contents and are approved; and I am satisfied that this map is technically correct.

Dated Jan. 6, 1965.

Don L. White
DIRECTOR OF PUBLIC WORKS

STREET SUPERINTENDENT

I hereby certify that according to the records of this office, the property shown on this map is not subject to any special assessments which have not been paid in full.

Dated Aug 25, 1964.

Bill Case
Street Superintendent

SUPERINTENDENT OF LIGHT AND WATER DEPARTMENT

I hereby certify that the subdivider named on this map has deposited with the Water Department of the City of Riverside sufficient funds to cover the cost of installing all necessary fire hydrants together with all water mains and laterals to the curb line on all streets shown on said map; that all P.U.E. shown on this map are sufficient for all requirements of the Electric Light and Water Departments of the City of Riverside and for the Department of Public Utilities of said City.

Dated Dec. 31, 1964.

Everett C. Ross
Superintendent of Light and Water Dept.,
City of Riverside, California.

CITY TREASURER

I hereby certify that according to the records of this office as of this date, the property shown on this map is not subject to any special assessments, bonds and/or liens which have not been paid in full.

This certificate does not include any special assessments the bonds of which have not become a lien upon said property.

Dated Aug 25, 1964.

H. E. Brewer
CITY TREASURER

CITY CLERK

I, V.J. STROHECKER, City Clerk of the City of Riverside, California, hereby certify that an undertaking satisfactory to the Council of said City guaranteeing the construction of required street improvements in this subdivision was approved and filed in my office prior to the final acceptance of this subdivision map.

IN WITNESS WHEREOF, I have hereunto set my hand and affixed the official seal of the City of Riverside, State of California, this 12th day of January, 1965.

Virginia Strohecker
City Clerk of the City of Riverside, California

RESOLUTION OF ACCEPTANCE

RESOLVED: That this map consisting of two (2) sheets be, and the same is hereby accepted as the official map of TRACT 3045 and the streets and easements are hereby accepted as public streets and easements. Except that the acceptance of Lot "C" is contingent on the extension and improvement of Lot "B" and the City Clerk is hereby authorized and directed to affix said map by signing her name thereto as City Clerk of the City of Riverside, State of California, and affix the official seal of said City thereto. I hereby certify that the foregoing resolution was adopted by the Mayor and Council of the City of Riverside this 12th day of January, 1965.

Virginia Strohecker
City Clerk of the City of Riverside, California.

TAX COLLECTOR

I hereby certify that according to the records of this office as of this date, there are no liens against the property shown on the within map for unpaid State, County, Municipal or Local taxes or special assessments collected as taxes, ~~except taxes and special assessments collected as taxes shown ther but not yet payable, which are estimated to be \$4,000.00.~~

Dated December 23, 1964.

DONNA M. BOUER County Tax Collector

John Strode Deputy

BOND

I hereby certify that a bond in the sum of \$_____ has been executed and filed with the Board of Supervisors of the County of Riverside, California, conditioned upon the payment of all taxes, State, County, Municipal or Local, and all special assessments collected as taxes which at the time of filing of this map with the County Recorder are a lien against said property but not yet payable and said bond has been duly approved by said Board of Supervisors.

Dated _____, 19_____.

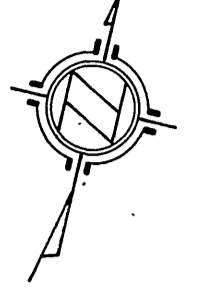
D.D. SULLIVAN
County Clerk and ex-officio
Clerk of the Board of Supervisors.

By _____ Deputy

CIVIL ENGINEER

I hereby certify that I am a Registered Civil Engineer of the State of California and that this map consisting of two (2) sheets correctly represents a survey made under my supervision during May of 1964; that all monuments shown hereon actually exist and their positions are correctly shown, or will be in place within one year from the recordation of this map.

John Davidson
Registered Civil Engineer No. 882.



BUTLER SUBDIVISION

IN THE CITY OF RIVERSIDE

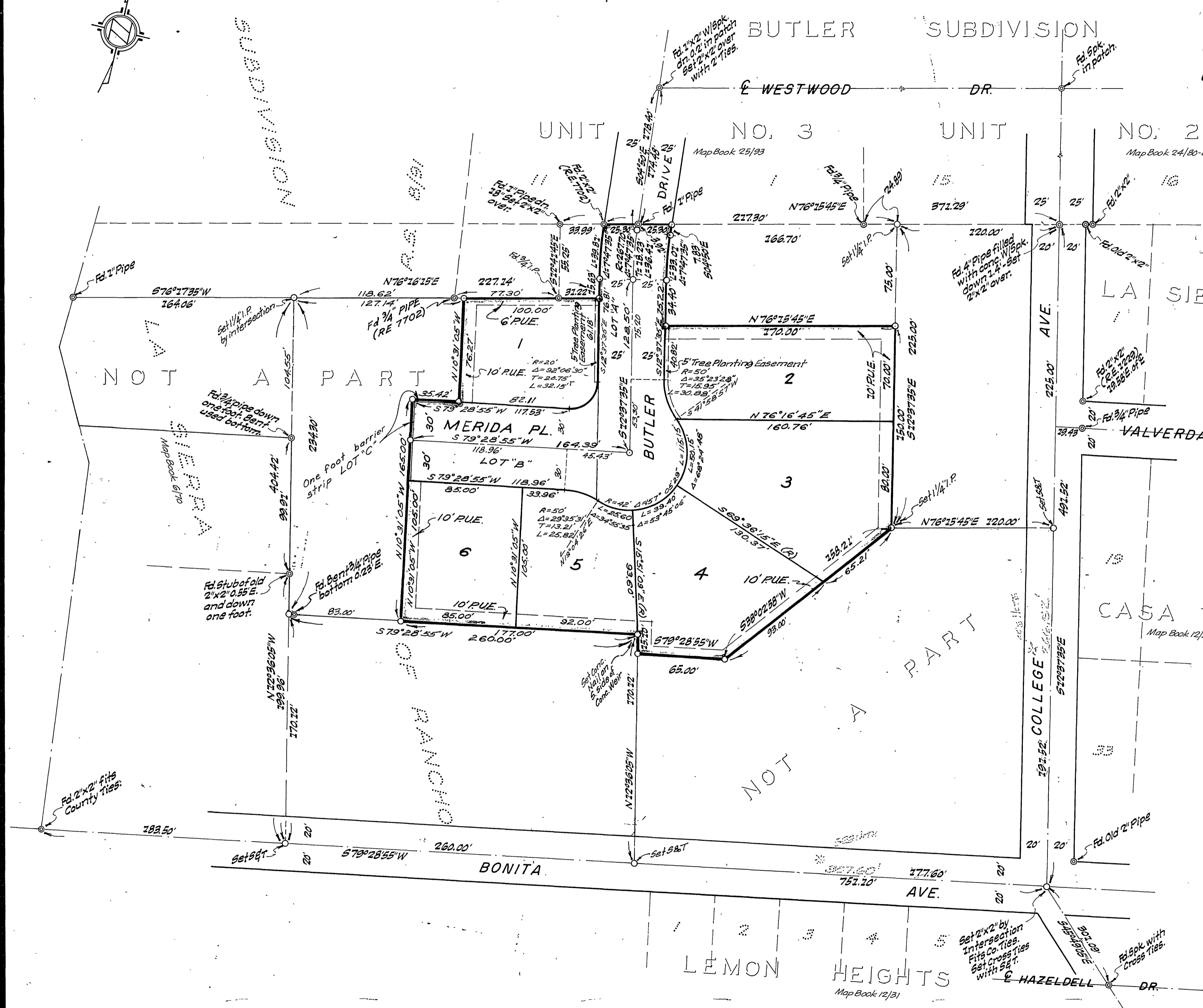
TRACT 3045

BEING A SUBDIVISION OF A PORTION OF SECTION 15, T. 3 S. R. 6 W., S. B. B. AND M., AS SHOWN ON MAP OF A SUBDIVISION OF RANCHO LA SIERRA, M. B. 6/70, RECORDS OF RIVERSIDE COUNTY, CALIFORNIA.

MAY 1964

J. F. DAVIDSON, C. E.

SCALE 1" = 50'



NOTE:
 Bearings are based on the South line of "BUTLER SUBDIVISION UNIT NO. 3" Map Book 25, Page 93, Records of Riverside County, California.

- Indicates 3/4" Pipe tagged R.E. 862 set unless noted otherwise
- ⊙ Indicates monument found as noted.
- 2" x 2" Redwood Stakes tagged R.E. 862 set at all lot corners.

*NOTE THESE DISTANCES DETERMINED BY CALCULATION