

# TRACT NO. 3007

BEING A SUBDIVISION OF A PORTION OF THE  
NW 1/4 OF THE NE 1/4 OF SEC. 33 T2S R5W  
S.B. B & M.  
TECHNOLOGICAL ENGINEERING CORPORATION  
JULY 1964

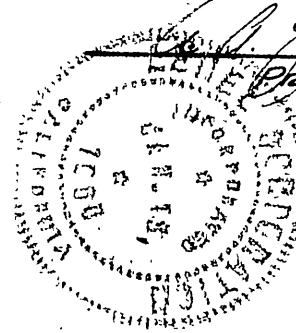
**FILED**  
On March 24 1965

At 9:00 AM.  
W.D. BALOGH  
County Recorder  
By Alan B. Vaner  
Deputy  
Fee \$7.00  
No. 32442  
Filed by City Clerk  
SUB GTEE F. A. T. Co

OWNERSHIP

We hereby certify that we are the owners of, or have some right, title or interest in the land included within the subdivision shown on the annexed map; that we are the only persons whose consent is necessary to pass a clear title to said land and we hereby consent to the making and filing of said subdivision and map as shown within the colored border line, and we hereby offer for dedication to public use for street purposes Lots A to E inclusive, and for construction and maintenance of public utilities, the public utility easements designated as "5' P.U.E." "10' P.U.E." "15' WATER EASE", and also hereby offer for dedication to the public use for street purposes Lot F

LEVEL CORPORATION

Stanley A. Nelson  
President  


Stanley A. Nelson  
Secretary

CITY PLANNING COMMISSION

I hereby certify that this map is as approved by the Riverside City Planning Commission at its meeting held August 20<sup>th</sup>, 1964.  
Dated February 24<sup>th</sup>, 1965 Thomas M. Brown  
Planning Director, City of Riverside

DIRECTOR OF PUBLIC WORKS

I hereby certify that I have examined the within map; that the subdivision shown is substantially the same as it appeared on the tentative map and any approved alteration thereof; that all provisions of Chapter 128 (Subdivision Map Act), Statutes of California, and all amendments thereto have been complied with; that plans and specifications for drain, drainage, sewer and drainage works sufficient to protect all lots in said subdivision from flood or overflow have been approved by me; that all easements for sewers shown on said map are correct in form and contents and are approved; and I am satisfied that this map is technically correct.  
Dated March 15 1965 J. Martinek  
Director of Public Works

SUPERINTENDENT OF LIGHT AND WATER DEPT.

I hereby certify that the subdivider named on this map has deposited with the Water Department of the City of Riverside sufficient funds to cover the cost of installing all necessary fire hydrants, together with all water mains and laterals to the curb line on all streets shown on this map; and that all public utility easements shown on this map are sufficient for all requirements of the Electric Light and Water Department of the City of Riverside and for the Department of Public Utilities of said City.  
Dated March 11 1965 Everett C. Ross  
Superintendent of Light and Water Department of the City of Riverside.

STREET SUPERINTENDENT

I hereby certify that according to the records of this office the property shown on this map is not subject to any special assessments which have not been paid in full.  
Dated Feb 26 1965 Bill Rossi  
Street Superintendent

LAND SURVEYOR

I hereby certify that I am a Licensed Land Surveyor of the State of California and that this map consisting of two sheets correctly represents a survey made under my supervision during July 1964; that all monuments shown hereon actually exist and their positions are correctly shown or will be in place within one (1) year from the recordation of this map. The monuments will be sufficient to enable the survey to be retraced. The survey is true and complete as shown.  
Dated February 19 1965 Ralph Lowell  
Licensed Land Surveyor\* 2427

CITY CLERK

I, V.J. Strohecker, City Clerk of the City of Riverside, California, hereby certify that an undertaking satisfactory to the Council of said City guaranteeing the construction of required street improvements in this subdivision was approved and filed in my office prior to the final acceptance of this subdivision map.  
IN WITNESS WHEREOF, I have hereunto set my hand and affixed the official seal of the City of Riverside, California this 16<sup>th</sup> day of March 1965.

City Clerk of the City of Riverside, Calif.  
Virginia J. Strohecker

RESOLUTION OF ACCEPTANCE

RESOLVED: that this map consisting of 2 sheets be and the same is hereby accepted as the official map of TRACT No 3007 and the streets and public utility easements hereon, are hereby accepted as public streets and public utility easements, except Lot F and the City Clerk is hereby authorized and directed to attest said map by signing her name thereto as City Clerk of the City of Riverside, California, and to affix the seal of the City thereto.  
I hereby certify that the foregoing resolution was accepted by the Mayor and the Council of the City of Riverside, this 16<sup>th</sup> day of March 1965.

City Clerk of the City of Riverside, Calif.  
Virginia J. Strohecker

TAX COLLECTOR

I hereby certify that according to the records of this office as of this date there are no liens against the property shown on this map for unpaid State, County, Municipal or local taxes or special assessments collected as taxes, except taxes and special assessments now a lien but not yet payable which are estimated to be \$ 1200.<sup>00</sup>  
Dated March 5 1965 DONNA M. BOUER COUNTY TAX COLLECTOR  
Glady A. Starks

TAX BOND

I hereby certify that a bond in the sum of \$ 1200.<sup>00</sup> has been filed with the Board of Supervisors of the County of Riverside, State of California, conditioned on the payment of all taxes, State, County, Municipal or local and all special assessments collected as taxes which at the time of filing of this map with the County Recorder are a lien against said property but not yet payable, and said bond has been duly approved by said Board of Supervisors.  
Dated March 15 1965 DONALD D. SULLIVAN  
County Clerk and ex-officio Clerk of the BOARD OF SUPERVISORS  
By Ma Keller Deputy.

CITY TREASURER

I hereby certify that according to the records of this office as of this date, the property shown on this map is not subject to any special assessments, bonds and/or liens which have not been paid in full. This certificate does not include any special assessments the bonds of which have not become a lien against said property.  
Dated Feb 24 1965 H. E. Brewer  
City Treasurer



State of California } ss  
County of Riverside }  
On this 11<sup>th</sup> day of March, 1965, before me the undersigned, a Notary Public in and for said county and state personally appeared A.A. LEBRENZ known to me to be the PRESIDENT and STANLEY A. NELSON known to me to be SECRETARY of LEVEL CORPORATION, the corporation that executed the within instrument, known to me to be the persons who executed the within instrument on behalf of the Corporation herein named; and acknowledged to me that such Corporation executed the same.  
WITNESS my hand and official seal.  
Richard E. Valentine  
Notary Public in and for said county and state.  
My commission expires 9-30-66

SCALE: 1" = 60'

IN THE CITY OF RIVERSIDE

SHEET 2 OF 2 SHEETS

# TRACT NO. 3007

BEING A SUBDIVISION OF A PORTION OF THE  
NW 1/4 OF THE NE 1/4 OF SEC 33 T2S R5W  
S.B. B & M.

TECHNOLOGICAL ENGINEERING CORPORATION

JULY 1964

LYSOM

GARDENA DRIVE

TRACT MB 22-22

WAY

ARCH WAY

WAY

RALEIGH STREET

TRACT NO. 2316

WIEHE AVENUE

WIEHE AVENUE

AVENUE

GARDENA STREET

RAILROAD

PACIFIC

UNION

DEWEY

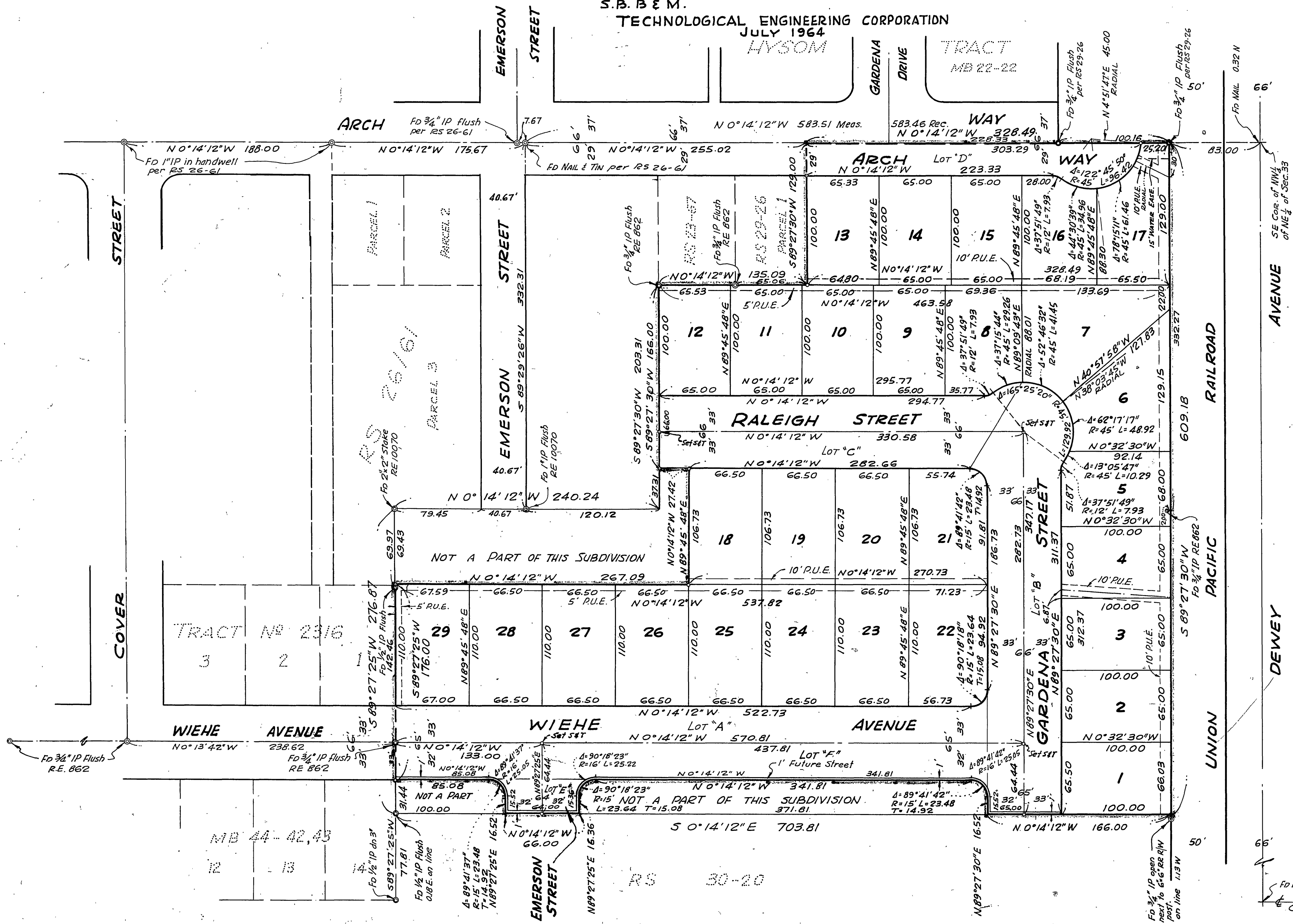
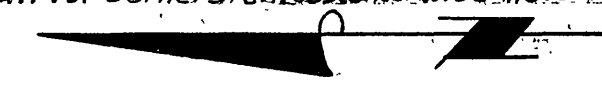
FD NAIL W/2" TANG TIES  
CARLO DRIVE

FILED

On \_\_\_\_\_ 19\_\_\_\_  
At \_\_\_\_\_  
W.D. BALOGH  
County Recorder  
By \_\_\_\_\_ Deputy  
Fee \_\_\_\_\_  
No \_\_\_\_\_  
Filed by \_\_\_\_\_  
SUB GTEE

Bearings are based on the southerly line of Record of Survey Book 29, page 26 records of Riverside County, being S89°27'30"W.

\* Indicates Monument found as noted.  
+ Indicates Set 2" IP tagged LS 2427, except as noted.  
Set 2x2" stakes Tagged LS 2427 at all lot corners unless otherwise noted.



53/ 23

TRACT NO. 3007