

# IN THE CITY OF RIVERSIDE TRACT NO. 3107

SHEET 1 OF 2 SHEETS

**FILED**  
On MARCH 24 1965

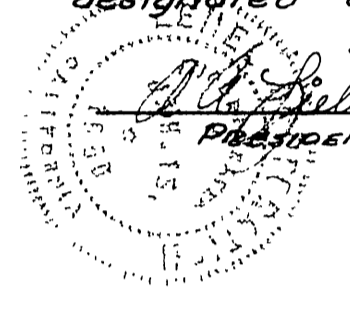
At 9:00 A.M.  
W.D. BALOGH  
County Recorder  
By Clayton B. Vaughn  
Deputy  
Fee \$ 7.00  
No 33443  
Filed by City Clerk  
SUB GTEE E.A. T. Co

BEING A SUBDIVISION OF A PORTION OF THE  
NW 1/4 OF THE NE 1/4 OF SEC. 33 T2S R5W  
S.B. B & M.  
TECHNOLOGICAL ENGINEERING CORPORATION  
JULY 1964

### OWNERSHIP

We hereby certify that we are the owners of or have some right, title or interest in the land included within the subdivision shown on the annexed map; that we are the only persons whose consent is necessary to pass a clear title to said land and we hereby consent to the making and filing of said subdivision and map as shown within the colored border line, and we hereby offer for dedication to public use for street purposes lots A to C inclusive and for construction and maintenance of public utilities, the public utility easements designated as "S.P.U.E."

### LENEL CORPORATION



Alfred DeLuca PRESIDENT  
Stanley A. Nelson SECRETARY

### CITY PLANNING COMMISSION

I hereby certify that this map is as approved by the Riverside City Planning Commission at its meeting held August 20<sup>th</sup>, 1964.

Dated February 24<sup>th</sup> 1965  
Thomas M. Brown  
Planning Director, City of Riverside

### DIRECTOR OF PUBLIC WORKS.

I hereby certify that I have examined the within map; that the subdivision shown is substantially the same as it appeared on the tentative map and any approved alteration thereof; that all provisions of Chapter 128 (Subdivision Map Act), Statutes of California, and all amendments thereto have been complied with; that plans and specifications for drain, drainage, sewer and drainage works, sufficient to protect all lots in said subdivision from flood or overflow, have been approved by me; that all easements for sewers ||||| shown on said map are correct in form and contents and are approved; and I am satisfied that this map is technically correct.

Dated March 15 1965  
Jim Arlene  
Director of Public Works

### SUPERINTENDENT OF LIGHT AND WATER DEPT.

I hereby certify that the subdivider named on this map has deposited with the Water Department of the City of Riverside sufficient funds to cover the cost of installing all necessary fire hydrants together with all water mains and laterals to the curb line on all streets shown on this map; and that all public utility easements shown on this map are sufficient for all requirements of the Electric Light and Water Department of the City of Riverside and for the Department of Public Utilities of said city.

Dated March 11 1965  
Everett C. Ross  
Superintendent of Light and Water Department of the City of Riverside

### STREET SUPERINTENDENT

I hereby certify that according to the records of this office, the property shown on this map is not subject to any special assessments which have not been paid in full.

Dated Feb 26 1965  
Bill Bone  
Street Superintendent

### LAND SURVEYOR

I hereby certify that I am a Licensed Land Surveyor of the State of California and that this map consisting of two sheets correctly represents a survey made under my supervision during July, 1964; that all monuments shown hereon actually exist and their positions are correctly shown or will be in place within one (1) year from the recordation of this map. The monuments will be sufficient to enable the survey to be retraced. The survey is true and complete as shown.

Dated February 19 1965  
Adolph Powell  
Licensed Land Surveyor No 2427

### CITY CLERK

I, V.J. Strohecker, City Clerk of the City of Riverside, California, hereby certify that an undertaking satisfactory to the Council of said City guaranteeing the construction of required street improvements in this subdivision was approved and filed in my office prior to the final acceptance of this subdivision map.

IN WITNESS WHEREOF, I have hereunto set my hand and affixed the official seal of the City of Riverside, California, this 16<sup>th</sup> day of March 1965.

City Clerk of the City of Riverside  
Virginia J. Strohecker

### RESOLUTION OF ACCEPTANCE

RESOLVED: that this map consisting of 2 sheets be and the same is hereby accepted as the official map of TRACT No 3107 and the streets and public utility easements hereon are hereby accepted as public streets and public utility easements; and the City Clerk is hereby authorized and directed to attest said map by signing her name thereto as City Clerk of the City of Riverside, California and to affix the seal of the City thereto.

I hereby certify that the foregoing resolution was accepted by the Mayor and the Council of the City of Riverside this 16<sup>th</sup> day of March 1965.

City Clerk of the City of Riverside  
Virginia J. Strohecker

### TAX COLLECTOR

I hereby certify that according to the records of this office as of this date, there are no liens against the property shown on this map for unpaid State, County, Municipal or local taxes or special assessments collected as taxes, except taxes and special assessments now a lien, but not yet payable which are estimated to be \$ 1,300.00.

Dated MARCH 5 1965  
DONNA M. BOUER, COUNTY TAX COLLECTOR  
Shelby J. Stark

### TAX BOND

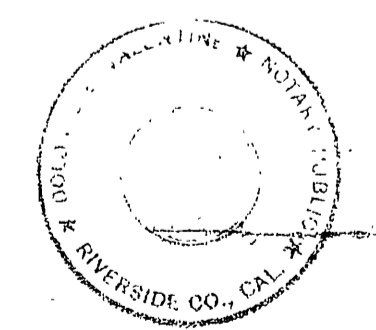
I hereby certify that a bond in the sum of \$ 1,300.00 has been filed with the Board of Supervisors of the County of Riverside, State of California, conditioned on the payment of all taxes, State, County, Municipal or local and all special assessments collected as taxes, which at the time of filing of this map with the County Recorder are a lien against said property but not yet payable, and said bond has been duly approved by said Board of Supervisors.

Dated March 15 1965  
DONALD D. SULLIVAN  
County Clerk and ex-officio Clerk of the BOARD OF SUPERVISORS  
By M.A. Kellan Deputy

### CITY TREASURER

I hereby certify that according to the records of this office as of this date, the property shown on this map is not subject to any special assessments, bonds and/or liens which have not been paid in full. This certificate does not include any special assessments the bonds of which have not become a lien against said property.

Dated Feb. 24 1965  
H. E. Brewer  
City Treasurer



State of California) ss.  
County of Riverside) ss.  
On this 3rd day of March 1965, before me, the undersigned, a Notary Public in and for said county and state personally appeared A.A. Lieberenz known to me to be the PRESIDENT and Stanley A. Nelson known to me to be the SECRETARY of the LENEL CORPORATION, the corporation that executed the within instrument, known to me to be the persons who executed the within instrument on behalf of the corporation herein named, and acknowledged to me that such corporation executed the same.  
WITNESS my hand and official seal.  
Valerie E. Volentine  
Notary Public  
My Commission expires 9-30-66

SCALE: 1" = 60'

IN THE CITY OF RIVERSIDE

# TRACT NO. 3107

BEING A SUBDIVISION OF A PORTION OF THE  
NW 1/4 OF THE NE 1/4 OF SEC 33 T2S R5W  
S.B. B & M.

TECHNOLOGICAL ENGINEERING CORPORATION  
JULY 1964

SHEET 2 OF 2 SHEETS

FILED  
On \_\_\_\_\_ 19\_\_

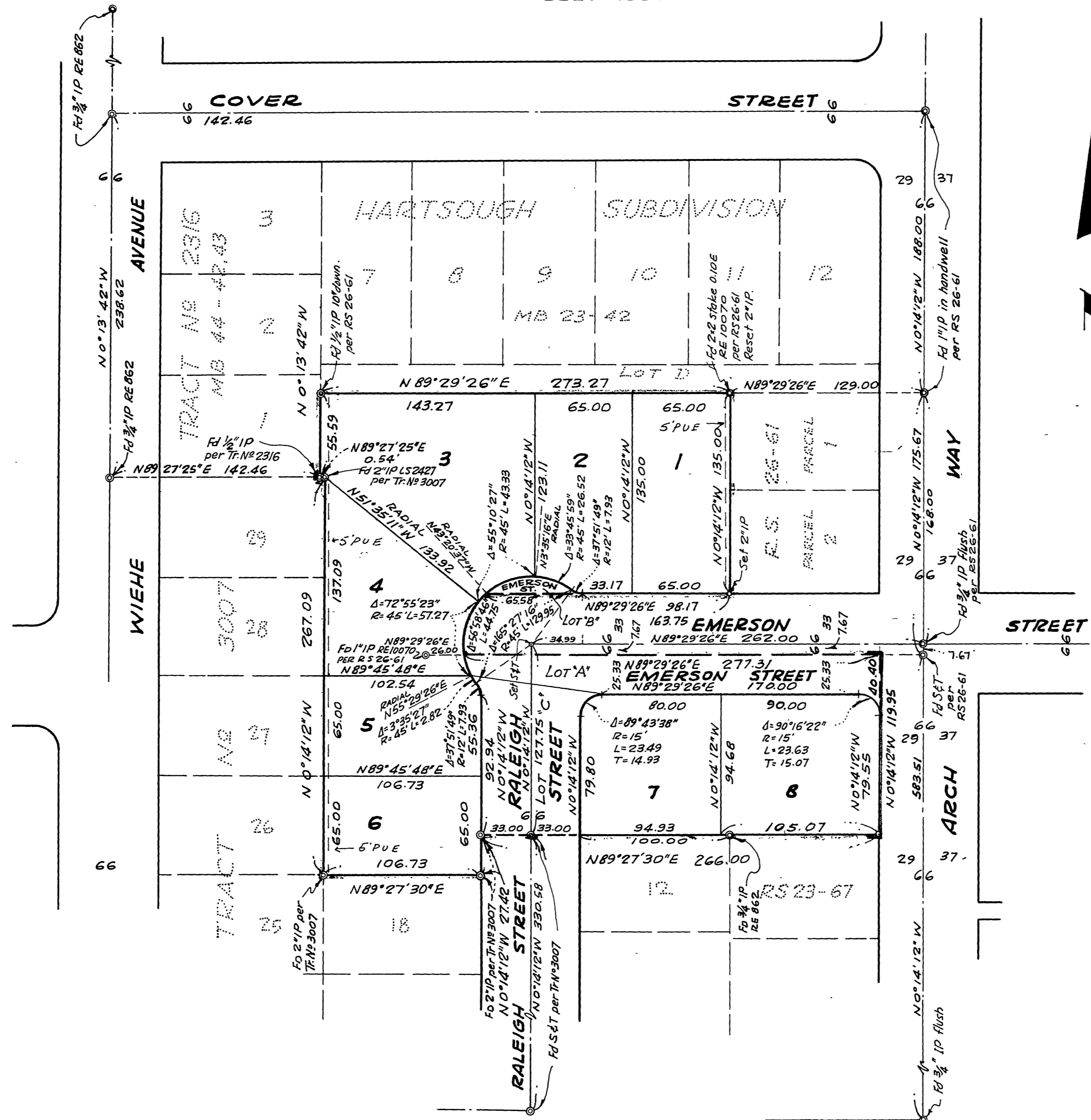
At \_\_\_\_\_  
W. D. BALOGH  
County Recorder

By \_\_\_\_\_  
Deputy

Fee \_\_\_\_\_

No \_\_\_\_\_

Filed by \_\_\_\_\_  
SUB GTEE \_\_\_\_\_



Bearings are based on the centerline of ARCH WAY having a bearing of N 0° 14' 12" W as shown on the map of Tract No. 3007, M.B.

- + Indicates 2" IP, tagged LS2427 set, except as noted.
- \* Indicates monument found as noted.
- set 2"x2" stakes Tagged LS 2427 at all lot corners unless otherwise noted.

Affidavit Sep 1, 1965 List 16 101155  
Set 2"x2" iron pipe and tagged L. B. 2157, 9 1/2" ml re. chas