

SCALE 1"=60'

TRACT NO. 3119

SHEET 1 OF 2 SHEETS

FILED

ON March 31 1965
 AT 2:15 P.M.
 W.D. BALOGH
 COUNTY RECORDER
 BY James J. Vinson
 DEPUTY
 FEE \$7.00
 NO. 3119
 FILED BY County Clerk
 C.L. GIER, F.A.T.C.

In unincorporated territory of Riverside County, California being a subdivision of portions of lots 6, 11 and 14, all in block 52 of the lands of the Riverside Land and Irrigating Company as shown by map on file in book 1, page 70 of maps, San Bernardino County Records. Said property is also shown by map on file in book 1, page 44 of maps of Riverside County Records.

VOORHEIS - TRINDLE - NELSON - INC.

Owners Certificate:

We hereby certify that we are the owners of the land included within the subdivision shown on the annexed map, that we are the only persons whose consents are necessary to pass a clear title to said land and we hereby consent to the making and filing of said map and subdivision as shown within the blue border line, and we hereby offer for dedication to public use for street purposes, Lots "A" to "D" inclusive and for the construction and maintenance of public utilities the 6' foot, 10' foot and 12' foot public utility easements shown on the map as 6' P.U.E., 10' P.U.E. and 12' P.U.E. and we hereby offer for dedication Lots "E" to "G" inclusive being 1' foot barrier strips to the County of Riverside.

HOMES & COUNTRY DEVELOPMENT CO., A PARTNERSHIP COMPOSED OF
 HOMES & COUNTRY, INC., A CALIFORNIA CORPORATION

F. K. Shepard
 F. K. SHEPARD, SECRETARY

AND FAME ENGINEERING, INC., A CALIFORNIA CORPORATION

R. Nelson Kenneth W. Carlson
 R. NELSON, PRESIDENT KENNETH W. CARLSON, SECRETARY

Surveyors Certificate:

I hereby certify that I am a licensed Land Surveyor of the State of California, that this map correctly represents a survey made under my direction during February, 1964, that all monuments shown hereon actually exist or will be in place within one year after date of recording of this map and that the monuments will be sufficient to enable the survey to be retraced and the survey is true and complete as shown.

Dated this 21st day of July, 1964 Frank W. Richardson
 Frank W. Richardson L.S. 2921

PLANNING COMMISSION: CERTIFICATE

TRACT NO. 3119, BEING A PORTION OF THE ORIGINAL APPROVED TENTATIVE MAP OF TRACT NO. 2944, HAS BEEN DESIGNATED AS A UNIT OF TRACT NO. 2944, PURSUANT TO THE PROVISIONS OF SECTION 518 OF ORDINANCE 460 OF THE COUNTY OF RIVERSIDE. THE TENTATIVE MAP OF TRACT NO. 2944 WAS APPROVED BY THE PLANNING COMMISSION OF RIVERSIDE COUNTY IN ACCORDANCE WITH THE REQUIREMENTS OF LAW IN DULY AUTHORIZED MEETING HELD ON THE 14th DAY OF APRIL, 1964.

Harold J. Evensen
 Secretary

Board of Supervisors: Certificate

The County of Riverside, State of California, by and through its duly authorized officers hereby approves this final map and accepts the foregoing dedications, except Lots "E" to "G" inclusive 1' foot barrier strips, which are excepted contingent upon the extension and improvement of the streets.

Dated this 29 day of March, 1965
 County of Riverside,
 State of California

Wm. J. Jones
 Chairman of the Board of Supervisors

Attest:
 Donald D. Sullivan
 County Clerk and ex-officio
 Clerk of the Board of Supervisors

By M. A. Vinson Deputy

Tax Collector:

I hereby certify that according to the records as of this date, there are no liens against the property shown on the annexed map for unpaid state, county, municipal or local taxes or special assessments collected as taxes, except taxes and special assessments collected as taxes, now a lien but not payable, which are estimated to be \$1,000.00

Dated this 17 day of March, 1965
 By Donna M. Bower Deputy
 Donna M. Bower
 County Tax Collector

County Surveyor: Certificate

I hereby certify that I have examined the annexed map, that the subdivision shown hereon is substantially the same as it appeared on the Tentative Map or approved alterations thereof, that all provisions of State Law and County Ordinance No. 460 have been complied with and I am satisfied said map is technically correct.

Dated this 24 day of March, 1965
 A. C. Keith
 County Surveyor

By J. M. Raible Deputy

Tax Bond: Certificate

I hereby certify that a tax bond in the sum of \$1,000.00 has been executed and filed with the Board of Supervisors of the County of Riverside, California, conditioned upon the payment of all taxes, State, County, Municipal, or local and all special assessments collected as taxes which at the time of filing of this map with the County Recorder are a lien against said property but not yet payable and said bond has been duly approved by said Board of Supervisors.

Dated March 29, 1965
 Donald D. Sullivan
 County Clerk and Ex-officio
 Clerk of the Board of Supervisors

By M. A. Vinson Deputy

State of California)
 County of Orange) s.s.

On this 10th day of March, 1965 before me Alice W. Williams, a Notary Public in and for said County and State personally appeared F. K. Shepard, known to me to be the Secretary of Homes and Country, Inc., a California Corporation; and R. Nelson known to me to be the President, and Kenneth W. Carlson, known to me to be the Secretary of Fame Engineering, Inc., a California Corporation, the Corporations that executed the within instrument and known to me to be the persons who executed the within instrument on behalf of said Corporations, said Corporations being known to me to be both of the partners of Homes and Country Development, Co., a partnership the partnership that executed the within instrument, and acknowledged to me that such Corporations executed the same as such partners and that such partnership executed the same.

Witness My Hand and Official Seal

Alice W. Williams
 Notary Public in and for Said County and State

My Commission Expires April 23, 1965

NR 53/31

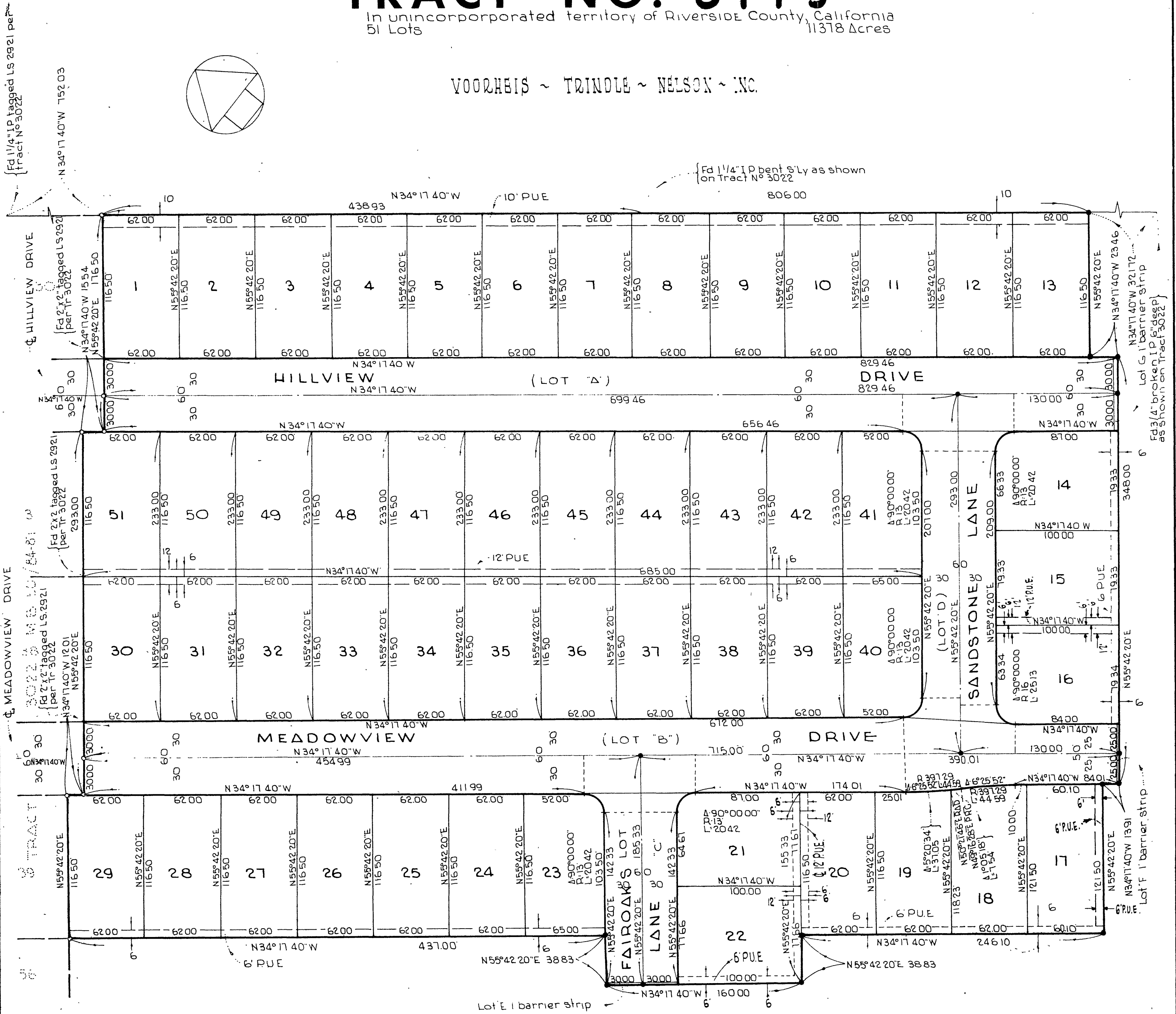
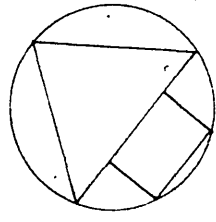
MB 53-31

MB 53/31 3119

TRACT NO. 3119

In unincorporated territory of Riverside County, California
51 Lots 11378 Acres

VOORHEIS ~ TRINDLE ~ NELSON ~ INC.



BAISIS OF BEARINGS:

The bearing of N 34° 17' 40" W for the E'ly line of Tract No 3022 was used as the basis of bearings on this map

MONUMENT NOTES

- 1 • Denotes: 2" IP (County Subdivision Ord 461, std 42) monuments set are tagged LS 2921
- 2 1" IP WILL BE set at all lot corners unless otherwise noted and tagged LS 2921
- 3 Building setback lines shall conform to existing zoning
- 4 All monuments are set per County Ord 461 std 42
- 5 ○ Denotes: 1 1/4" IP (County Subdivision Ord 461, std 42) monuments found are found per Tract No 3022 M B and tagged LS 2921

MB 53/32

MB 53/32

M.B. 53/32 3119-A