

IN THE CITY OF RIVERSIDE

# TRACT No 3039

BEING A SUBDIVISION OF A PORTION OF SECTIONS 3 & 10, T.3S, R.6W., PER MAP OF RANCHO LA SIERRA, MAP BOOK 6, PAGE 70, RIVERSIDE COUNTY RECORDS.

ALBERT A. WEBB ASSOCIATES  
CIVIL ENGINEERS  
RIVERSIDE CALIFORNIA  
JANUARY 1965

W. D. BALOGH  
Clerk  
at: 2:25 P.M.  
FEE: \$7.00  
No. — 12000  
Filed By - City Clerk  
SUB. GTC: F.A.T.C.

### OWNERSHIP

We hereby certify that we are the owners of or have some right, title or interest in the land included within the subdivision shown hereon; that we are the only persons whose consent is necessary to pass a clear title to said land; that we consent to the making of said map and subdivision as shown within the colored border line, and that we hereby offer for dedication to public use for public utility purposes the areas designated as "6' P.U.E." and "10' P.U.E.", and for sewer purposes the area designated "10' Sewer Easement"; and we also offer for dedication to public use for street purposes the areas designated as Lots "A" thru "E". Further, the undersigned owners, our successors and assigns in interest hereby release and relinquish to the City of Riverside, a Municipal Corporation, all vehicular and pedestrian access rights appurtenant to Lots 1, 15, 16, 17 and 30 as shown on annexed map, on, over and across Golden Avenue adjoining said Lots 1, 15, 16, 17 and 30.

Johnson Myerscough Builders, a California Corporation:  
C. Myerscough President

### ACKNOWLEDGEMENT

State of California } s.s.  
County of Riverside }

On January 25, 1966 before me, the undersigned, a Notary Public in and for said County and State, personally appeared C. MYERSCOUGH known to me to be the PRESIDENT and known to me to be the of the corporation that executed the within instrument, and known to me to be the persons who executed the within instrument on behalf of the corporation therein named, and acknowledged to me that such corporation executed the within instrument pursuant to its by-laws or a resolution of its board of directors. WITNESS my hand and official seal.

Richard E. Valentin  
Notary Public in and for said County and State

My Commission Expires 9-30-66

### CITY PLANNING COMMISSION

I hereby certify that this map is as approved by the Riverside City Planning Commission at its meeting held February 4th, 1965.

T.M. Brown by F.W. Hall  
PLANNING DIRECTOR, CITY OF RIVERSIDE

### DIRECTOR OF PUBLIC WORKS

I hereby certify that I have examined the within map; that the subdivision shown is substantially the same as it appeared on the tentative map and approved alterations thereof; that all provisions of Chapter 128 (Subdivision Map Act), Statutes of California 1943, and of Ordinance No 1328 of the City of Riverside, California, and all amendments thereto have been complied with; that plans and specifications for drain, drainage, sewer and drainage works sufficient to protect all lots in said subdivision from flood or overflow have been approved by me; that all easements for sewers and drains shown on said map are correct in form and contents and are approved; and I am satisfied that this map is technically correct.

Dated January 31, 1966 J. Mantel  
DIRECTOR OF PUBLIC WORKS

### STREET SUPERINTENDENT

I hereby certify that according to the records of this office the property shown on this map is not subject to any special assessments which have not been paid in full.

Dated July 7, 1965 P.W. Fournier  
STREET SUPERINTENDENT

### SUPERINTENDENT OF LIGHT AND WATER DEPT.

I hereby certify that the subdivider named on this map has deposited with the Water Department of the City of Riverside sufficient funds to cover the cost of installing all necessary fire hydrants, together with all water mains and laterals to the curb line on all streets shown on this map; and that all public utility easements shown on this map are sufficient for all requirements of the Electric Light and Water Department of the City of Riverside and for the Department of Public Utilities of said City.

Dated January 26, 1965 Edward A. Roth  
SUPERINTENDENT OF LIGHT AND WATER DEPARTMENT OF THE CITY OF RIVERSIDE

### CIVIL ENGINEER

I hereby certify that I am a Registered Civil Engineer of the State of California and that this map consisting of two (2) sheets correctly represents a survey made under my supervision during December 1964; that all monuments shown hereon actually exist and their positions are correctly shown or will be in place within one (1) year from the recordation of this map. The monuments will be sufficient to enable the survey to be retraced. The survey is true and complete as shown.

Dated JANUARY 13, 1965 Ernest N. Webb  
REGISTERED CIVIL ENGINEER No 9876

### CITY CLERK

I, V.J. Strohecker, City Clerk of the City of Riverside, California, hereby certify that an undertaking satisfactory to the Council of said City guaranteeing the construction of required street improvements in this subdivision was approved and filed in my office prior to the final acceptance of this subdivision map.

IN WITNESS WHEREOF, I have hereunto set my hand and affixed the official seal of the City of Riverside, California this 14th day of February, 1966.

CITY CLERK OF THE CITY OF RIVERSIDE, CALIFORNIA

By Virginia J. Strohecker

### RESOLUTION OF ACCEPTANCE

RESOLVED: That this map consisting of two (2) sheets be, and the same is hereby accepted as the official map of TRACT No 3039 and the streets and easements are hereby accepted as public streets and easements and the City Clerk is hereby authorized and directed to attest said map by signing her name thereto as City Clerk of the City of Riverside, State of California, and affix the official seal of said City thereto.

I hereby certify that the foregoing resolution was accepted by the Mayor and Council of the City of Riverside this 14th day of Feb, 1966.

Virginia J. Strohecker  
CITY CLERK OF THE CITY OF RIVERSIDE, CALIFORNIA

### TAX COLLECTOR

I hereby certify that according to the records of this office as shown of this date, there are no liens against the property shown on the within map for unpaid State, County, Municipal or local taxes or special assessments collected as taxes, except taxes and special assessments collected as taxes now a lien but not yet payable, which are estimated to be \$ 14,000.00.

DONNA M. BOUER, COUNTY TAX COLLECTOR

Dated January 26, 1966 By John Storde Deputy

### TAX BOND

I hereby certify that a tax bond in the sum of \$            has been filed with the Board of Supervisors of the County of Riverside, California, conditioned upon the payment of all taxes, State, County, Municipal or local, and all special assessments collected as taxes which at the time of filing of this map with the County Recorder are a lien against said property but not yet payable and said bond has been duly approved by said Board of Supervisors.

DONALD D. SULLIVAN  
COUNTY CLERK AND EX-OFFICIO CLERK OF THE BOARD OF SUPERVISORS

Dated           , 1965. By            Deputy

### CITY TREASURER

I hereby certify that according to the records of this office as of this date, the property shown on this map is not subject to any special assessments, bonds and/or liens which have not been paid in full. This certificate does not include any special assessments the bonds of which have not become a lien against said property.

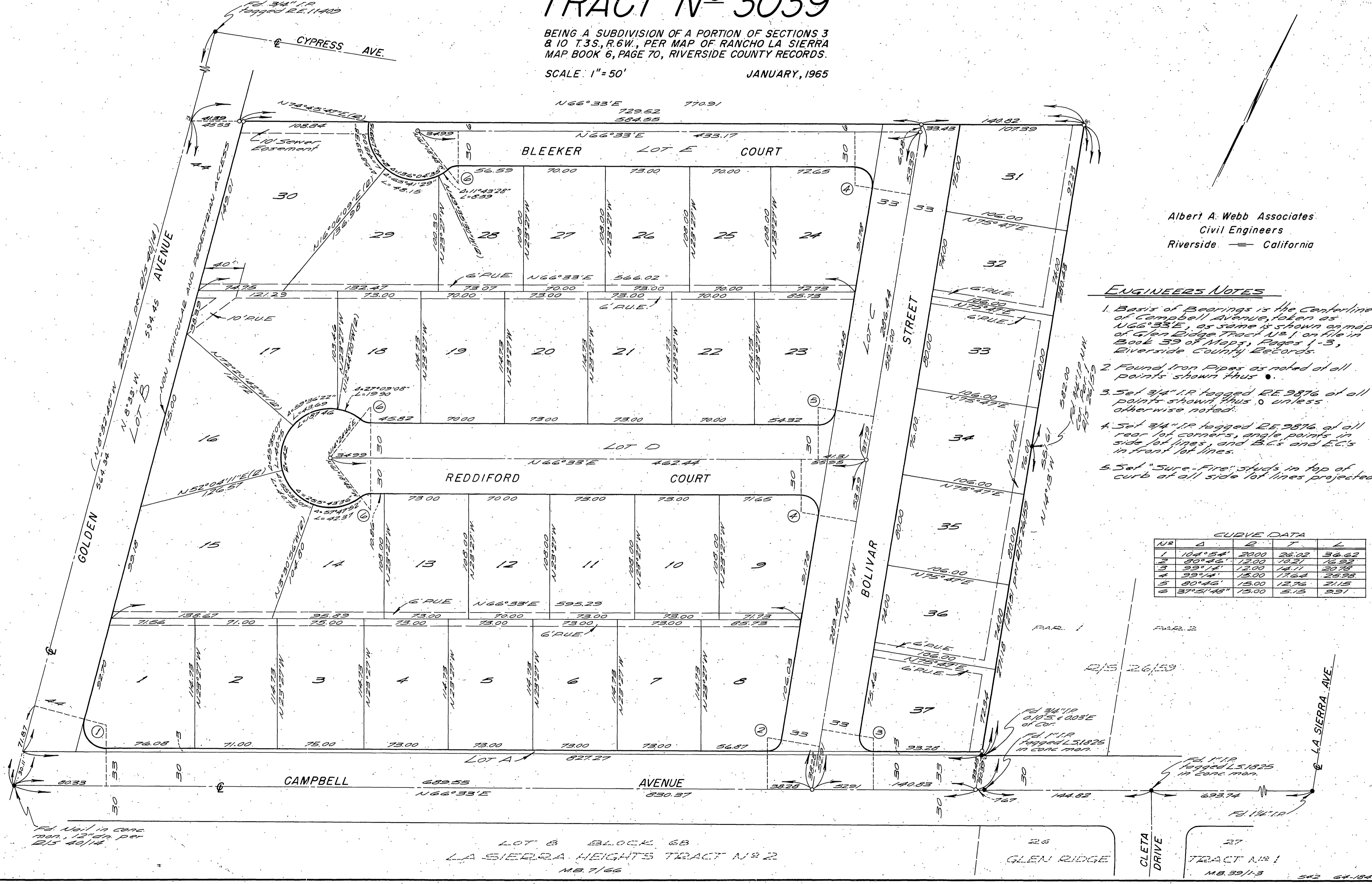
Dated JULY 7, 1965 H.E. Brewer  
CITY TREASURER J.E.R.O.

IN THE CITY OF RIVERSIDE

# TRACT N<sup>o</sup> 3039

BEING A SUBDIVISION OF A PORTION OF SECTIONS 3 & 10 T.3S., R.6W., PER MAP OF RANCHO LA SIERRA MAP BOOK 6, PAGE 70, RIVERSIDE COUNTY RECORDS.

SCALE: 1" = 50' JANUARY, 1965



Albert A. Webb Associates  
Civil Engineers  
Riverside - California

### ENGINEERS NOTES

1. Basis of Bearings is the Centerline of Campbell Avenue, taken as N66°33'E, as same is shown on map of Glen Ridge Tract N<sup>o</sup> 1 on file in Book 39 of Maps, Pages 1-3, Riverside County Records.
2. Found Iron Pipes as noted at all points shown thus ●.
3. Set 3/4" I.P. tagged R.E. 9876 of all points shown, thus ○ unless otherwise noted.
4. Set 3/4" I.P. tagged R.E. 9876 at all rear lot corners, angle points, in side lot lines, and B.C.'s and E.C.'s in front lot lines.
5. Set "Sure-Fire" studs in top of curb at all side lot lines projected.

### CURVE DATA

NO.	Δ	R	T	L
1	104°54'	2000	26.02	36.62
2	50°46'	1200	10.21	16.92
3	99°14'	1200	14.11	20.78
4	99°14'	1200	17.64	25.92
5	80°46'	1500	12.76	21.15
6	37°51'45"	1500	5.15	9.91

LOT 8 BLOCK 6B  
LA SIERRA HEIGHTS TRACT N<sup>o</sup> 2  
M.B. 7/66

GLEN RIDGE

TRACT N<sup>o</sup> 1  
M.B. 39/1-3