

ACKNOWLEDGEMENT

State of California } ss.
County of Riverside }

On 1967, before me the undersigned, a Notary Public in and for said County and State, personally appeared and known to me to be the and respectively of the corporation that executed the within instrument, known to me to be the persons who executed the within instrument on behalf of the corporation therein named, and acknowledged to me that such corporation executed the within instrument pursuant to its by-laws or a resolution of its board of directors as Trustee.

Witness my hand and official seal:

My Commission Expires: Notary Public in and for said County and State

OWNERSHIP

We hereby certify that we are the owners of or have some right, title or interest in the land included within the subdivision shown hereon; that we are the only persons whose consent is necessary to pass a clear title to said land; that we consent to the making of said map and subdivision as shown within the colored border line and we hereby offer for dedication for public use for street purposes Lots A to B inclusive, and for construction and maintenance of public utilities, the public utility easements designated as "G' A.U.E." & "10' A.U.E."; and we also hereby offer for dedication to public use for street purposes Lots C & D (one foot barrier strips.)

LENEL CORP., a California Corporation

W. J. Lehman Pres.

Stanley A. Nelson Sec.

FIRST AMERICAN TITLE INSURANCE AND TRUST COMPANY, a California Corporation

ACKNOWLEDGEMENT

State of California } ss.
County of Riverside }

On Sept. 20, 1967, before me, the undersigned, a Notary Public in and for said County and State, personally appeared A.A. LIEBRENT and STANLEY A. NELSON, known to me to be the PRESIDENT and SECRETARY of the corporation that executed the within instrument, and known to me to be the persons who executed the within instrument on behalf of the corporation therein named, and acknowledged to me that such corporation executed the within instrument pursuant to its by-laws or a resolution of its board of directors.

Witness my hand and official seal:

Dolores Valentin
Notary Public in and for said county and State

My commission expires: 9-30-70

SOIL REPORT

A preliminary soil report was prepared by Western Laboratories on the 10th day of August, 1967, as required by the Health and Safety Code, Section 17953.

IN THE CITY OF RIVERSIDE, STATE OF CALIFORNIA

TRACT NO. 3561

BEING A SUBDIVISION OF LOT 1 AND PORTIONS OF LOTS 2 AND 3 OF THE MAP OF CALKINS ADDITION FILED IN BOOK 11 OF MAPS, PAGE 13 THEREOF, RIVERSIDE COUNTY RECORDS

MARCH, 1966

SCALE 1" = 50'

ALBERT A. WEBB ASSOCIATES
Civil Engineers

CITY PLANNING COMMISSION

I hereby certify that this map is as approved by the Riverside City Planning Commission at its meeting held JUNE 9, 1966

Thomas M. Brown
Planning Director, City of Riverside

DIRECTOR OF PUBLIC WORKS

I hereby certify that I have examined the within map, that the subdivision shown is substantially the same as it appeared on the tentative map and any approved alterations thereof; that all provisions of Chapter 128 (Subdivision Map Act), Statutes of California 1943, and of Ordinance No 1328 of the City of Riverside, California, and all amendments thereto have been complied with; that plans and specifications for drain, drainage, sewer and drainage works sufficient to protect all lots in said subdivision from flood or overflow have been approved by me; that all easements for sewers and drains shown on said map are correct in form and contents and are approved; and I am satisfied that this map is technically correct.

Dated September 21, 1967

J. Mautsch
Director of Public Works

STREET SUPERINTENDENT

I hereby certify that according to the records of this office the property shown on this map is not subject to any special assessments which have not been paid in full.

Dated Aug 28, 1967

Geornut Hubbard
Street Superintendent

SUPERINTENDENT OF LIGHT AND WATER DEPT.

I hereby certify that the subdivider named on this map has deposited with the Water Department of the City of Riverside sufficient funds to cover the cost of installing all necessary fire hydrants, together with all water mains and laterals to the curb line on all streets shown on this map; and that all public utility easements shown on this map are sufficient for all requirements of the Electric Light and Water Department of the City of Riverside, and for the Department of Public Utilities of said City.

Dated Sept. 20, 1967

Everett C. Ross by Dan Campbell
Superintendent of Light and Water Department of the City of Riverside

CITY TREASURER

I hereby certify that according to the records of this office as of this date, the property shown on this map is not subject to any special assessments, bonds and/or liens which have not been paid in full. This certificate does not include any special assessments the bonds of which have not become a lien against said property.

Dated Aug 28, 1967

H. E. Brewer
City Treasurer

SHEET 1 OF 2 SHEETS

FILED
On OCTOBER 16 1967

At 4:00 P.M.

W.D. BALOGH
County Recorder

By Deputy

Fee \$ 7.00

No 91002

Filed by City Clerk

Sub GEE: F.A.P. Co

CITY CLERK

I, V.J. Strohecker, City Clerk of the City of Riverside, California, hereby certify that an undertaking satisfactory to the Council of said City guaranteeing the construction of required street improvements in this subdivision was approved and filed in my office prior to the final acceptance of this subdivision map.

IN WITNESS WHEREOF, I have hereunto set my hand and affixed the official seal of the City of Riverside, California this 3rd day of October, 1967.

Virginia J. Strohecker
City Clerk of the City of Riverside, Calif.

RESOLUTION OF ACCEPTANCE

RESOLVED: That this map consisting of 2 sheets be, and the same is hereby accepted as the official map of TRACT No 3561 and the streets and public utility easements hereon are hereby accepted as public streets and public utility easements except Lots C & D and the City Clerk is hereby authorized and directed to attest said map by signing her name thereto as City Clerk of the City of Riverside, California, and to affix the seal of said City, thereto.

I hereby certify that the foregoing resolution was accepted by the Mayor and Council of the City of Riverside this 3rd day of October, 1967.

Virginia J. Strohecker
City Clerk of the City of Riverside, Calif.

TAX COLLECTOR

I hereby certify that according to the records of this office as of this date there are no liens against the property shown on this map for unpaid State, County, Municipal or local taxes or special assessments collected as taxes, except taxes and special assessments now a lien but not yet payable which are estimated to be \$ 700.00.

Dated Sept. 20, 1967

DONNA BOUER BABCOCK
County Tax Collector

By J. J. Stark Deputy

TAX BOND

I hereby certify that a bond in the sum of \$ 700.00 has been filed with the Board of Supervisors of the County of Riverside, State of California, conditioned on the payment of all taxes, State, County, Municipal or local and all special assessments collected as taxes which at the time of filing of this map with the County Recorder are a lien against said property but not yet payable, and said bond has been duly approved by said Board of Supervisors.

Dated SEPT 25, 1967

DONALD D. SULLIVAN
County Clerk and ex-officio Clerk of the Board of Supervisors

By Agnes Hughes Deputy

CIVIL ENGINEER

I hereby certify that I am a Registered Civil Engineer of the State of California and that this map consisting of 2 sheets correctly represents a survey made under my supervision during June 1964, that all monuments shown hereon actually exist and their positions are correctly shown or will be in place within one (1) year from the recordation of this map. The monuments will be sufficient to enable the survey to be retraced. The survey is true and complete as shown.

Dated Aug 7th 1967

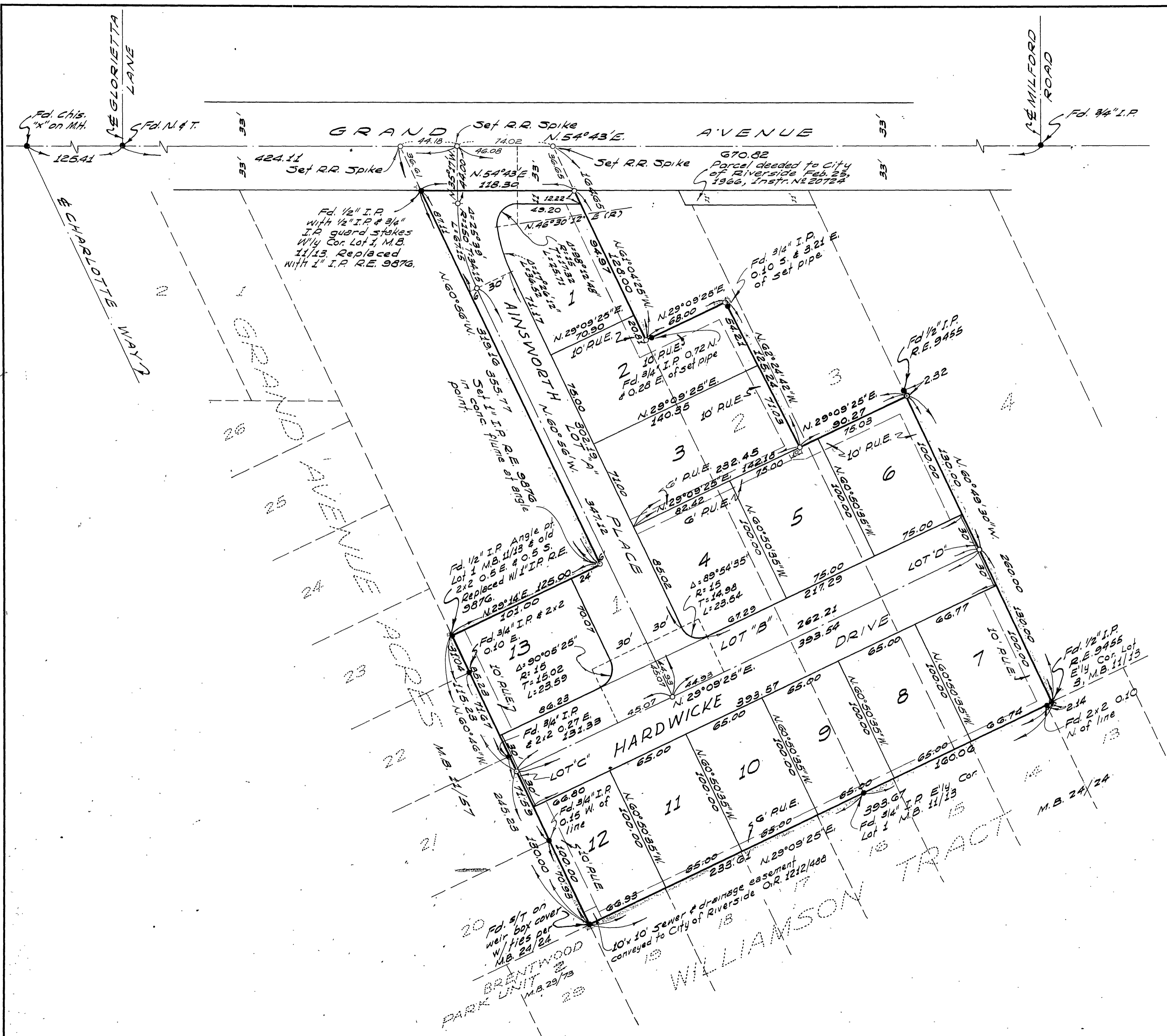
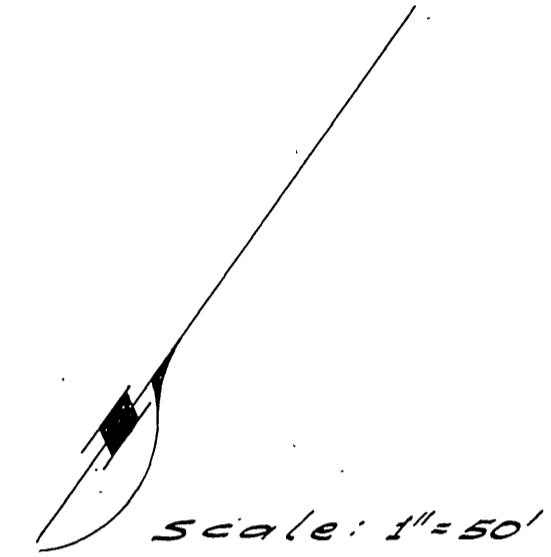
Earl N. Uebel

R.C.E. No 9876. 66-85 567/2

Conrad Parker

Sheet 2 of 2 sheets
TRACT NO 3561
Being a subdivision of Lot 1 and portions of Lots 2 and 3 of the Map of Calkins Addition, filed in Book 11 of Maps, page 13 thereof, Riverside County Records.

ALBERT A. WEBB ASSOCIATES
CIVIL ENGINEERS
RIVERSIDE CALIFORNIA
MARCH 1966



- ENGINEER'S NOTES:-**
1. Basis of Bearings is the centerline of Grand Avenue taken as N54°43'E as shown on Map of Calkins Addition, filed in Book 11 of Maps, Page 13 thereof, Riverside County Records.
 2. Found monuments as noted at all points shown thus •
 3. Set 1" I.P. tagged R.E. 9876 at all points shown thus o
 4. Set 3/4" I.P. tagged R.E. 9876 at all rear lot corners, angle points in side lot lines, and B.C.'s and E.C.'s in front lot lines.
 5. Set "Sure Fire" studs in top of curb at all side lot lines projected except that 3/4" I.P.s were set at the N'ly & S'ly corners of lot 13, the W'ly corner of lot 12, the N'ly corner of lot 7, the E'ly corner of lot 6, and the N'ly corner of lot 1.

Grand Point