

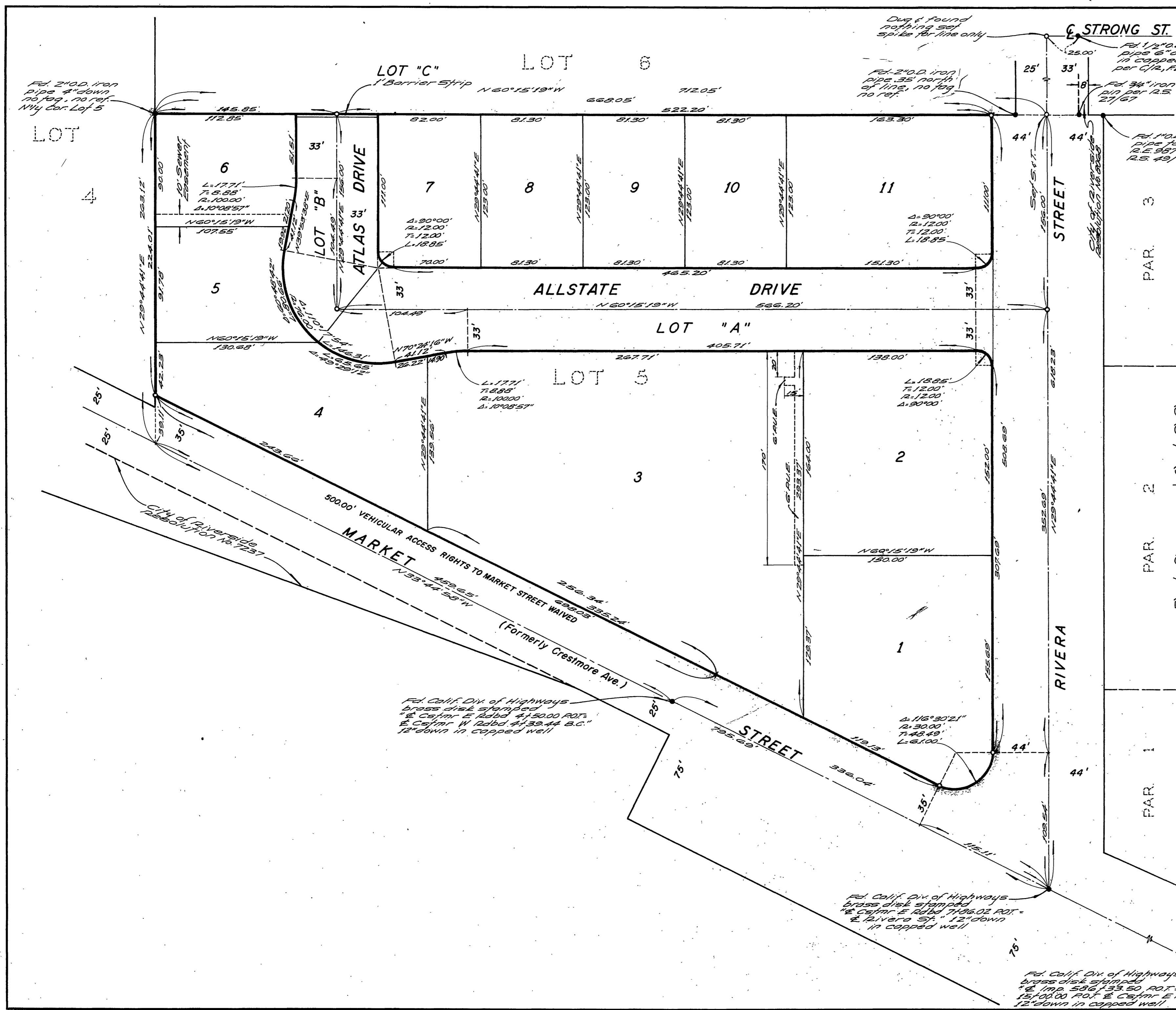
IN THE CITY OF RIVERSIDE
TRACT NO. 3998

BEING A SUBDIVISION OF A PORTION OF LOT 5 OF THE ALAMO TRACT AS SHOWN BY MAP ON FILE IN BOOK 9 OF MAPS, AT PAGE 5 THEREOF, RECORDS OF RIVERSIDE COUNTY, CALIFORNIA, IN THE RUBIDOUX RANCHO.

ALBERT A. WEBB ASSOCIATES
Civil Engineers
Riverside — California
Sept., 1969



ENGINEER'S NOTES:
Basis of bearings is the centerline of Rivera St. taken as N29°44'41"E as shown by map on file in Book 49, page 22, of Records of Survey, Records of Riverside County, California.
Found monuments as noted at all points shown thus •.
Set 1" iron pipe tagged R.E. 9876 at all points shown thus °, unless otherwise noted.
Set 1" iron pipe tagged R.E. 9876 at all rear lot corners, angle points in side lot lines and B.C.'s & E.C.'s in front lot lines.
Set "Sure Fire" studs in top of curb at all side lot lines projected.



65

M.B. 65/14 3998-A

M.B. 65/14 3998-A