

MB.84/63

TR.5900 MB.84/63

IN THE CITY OF RIVERSIDE, RIVERSIDE COUNTY, CALIFORNIA  
**TRACT NO. 5900**  
 BEING A SUBDIVISION OF THE N.E. 1/4 OF THE S.W. 1/4 OF SECTION 6, T.3S., R.4W., S.B.M.

Copy 84 / 63

SHEET 1 OF 3 SHEETS

**FILED**  
On Feb. 27, 1976

At 3:00 P.M.  
 W.D. Balogh  
 County Recorder  
 by Hamed C. Beale  
 Deputy  
 Fee \$9.00  
 No. 26293  
 Filed by City Clerk  
 Sub'd after F.A.T. Co.

**ALBERT A. WEBB ASSOCIATES - CIVIL ENGINEERS**  
**RIVERSIDE CALIFORNIA**  
 JUNE, 1974

**OWNERSHIP**

We hereby certify that we are the owners of or have right, title or interest in the land included within the subdivision shown on the annexed map; that we are the only persons whose consent is necessary to pass a clear title to said land and we hereby consent to the making and filing of said subdivision and map as shown within the colored border line, and we hereby offer for dedication, for street purposes Lots "A" to "E", inclusive, for construction and maintenance of drainage facilities, those easements designated as 10' Drainage Easement and for construction and maintenance of sewer line facilities, those easements designated as 10' Sewer Easement.

BRATTAIN CONTRACTORS, INC., a California Corporation.

Edwin E. Brattain      Lori E. Murrell  
 President                      Secretary

**CITY ENGINEER'S CERTIFICATE**

I hereby certify that I have examined the within map; that the subdivision shown hereon is substantially the same as it appeared on the tentative map of Tract No. 5900, which was approved by the Riverside City Planning Commission at its meeting held April 4, 1974, and any approved alterations thereof; that all provisions of Chapter 128 (Subdivision Map Act) Statutes of California, 1943, and all of Title 18 of the Riverside Municipal Code, and all amendments thereto have been complied with; and I am satisfied that this map is technically correct; that the easements for sewers and drainage facilities shown on said map are correct in form and contents and are approved; that the plans and specifications for drains, sewers, and drainage works sufficient to protect all lots in said subdivision from flood or overflow have been approved by me; that a complete set of plans covering all improvements has been filed with the Public Works Department and that the same have been checked and approved by me; and that all improvements have been completed in accord with approved plans or that the subdivider has entered into an agreement with the City of Riverside covering completion of all improvements and specifying the time for completing the same.

Dated FEBRUARY 19, 1976      James F. Martinak, P.C.E. 8134  
 Director of Public Works  
 by J. Martinak

**CITY CLERK'S CERTIFICATE**

RESOLVED: that this map consisting of three (3) sheets be and the same is hereby accepted as the final map of Tract No. 5900, and the streets and easements are hereby accepted as public streets and easements, and the City Clerk is hereby authorized and directed to attest said map by signing her name thereto as City Clerk of the City of Riverside, State of California, and affix the official seal of said City thereto.

I hereby certify that the foregoing resolution was accepted by the Mayor and Council of the City of Riverside this 24th day of February, 1976.  
Alice A. Hare  
 City Clerk of the City of Riverside  
 by Alice A. Hare

**TAX COLLECTOR**

I hereby certify that according to the records of this office as of this date, there are no liens against the real property shown on the annexed map for unpaid State, County, Municipal, or local taxes or special assessments collected as taxes.

Dated February 18th, 1976.      Danna Bauer Babcock  
 County Tax Collector  
 by Kenneth C. Kirwin  
 Deputy

**ACKNOWLEDGEMENT**

State of California } s.s.  
 County of Orange }

On this 6th day of December, 1974, before me, the undersigned, a Notary Public in and for said State, personally appeared Edwin E. Brattain and Lori E. Murrell, known to me to be the President and Secretary respectively, of the corporation that executed the within instrument, and known to me to be the persons who executed the within instrument on behalf of the corporation therein named, and acknowledged to me that such corporation executed the same, and acknowledged to me that such corporation executed the within instrument pursuant to its by-laws or a resolution of its board of directors.  
 WITNESS my hand and official seal.

My commission expires May 25, 1975      Janette M. Speck  
 Notary Public in and for said  
 County and State.

**UTILITIES CERTIFICATE**

I hereby certify that the subdivider named on this map has deposited with the City of Riverside Public Utilities Department sufficient funds or made the required arrangements and provisions for the installation of water and electric facilities necessary to provide service to all parcels as shown on this map; and that any public utility easements shown are sufficient for all requirements of the Electric and Water Divisions of the Department of Public Utilities of the City of Riverside.

Dated Feb. 18, 1976      Everett C. Ross  
 Director of Public Utilities  
 by Everett C. Ross

**CITY TREASURER**

I hereby certify that according to the records of this office as of this date, the real property shown on this map is not subject to any special assessments, bonds and/or liens which have not been paid in full. This certificate does not include any special assessments, the bonds of which have not become a lien upon said property.

Dated Nov 25, 1974      H.E. Brewer, City Treasurer  
 by H.E. Brewer

**SOIL REPORT**

A preliminary soil report was prepared on the 17th day of April, 1974, as required by the Health and Safety Code of California, Section 17953: by Pacific Foundation Engineers, Inc.

**TAX BOND**

I hereby certify that a bond in the sum of \$ \_\_\_\_\_ has been executed and filed with the Board of Supervisors of the County of Riverside, California, conditioned upon the payment of all taxes, State, County, Municipal, or local, and all special assessments collected as taxes which at the time of filing of this map with the County Recorder are a lien against said property but not yet payable and said bond has been duly approved by said Board of Supervisors.

Dated \_\_\_\_\_, 1976.      Donald D. Sullivan  
 County Clerk and ex-officio Clerk of  
 the Board of Supervisors  
 by \_\_\_\_\_  
 Deputy

**ENGINEER'S CERTIFICATE**

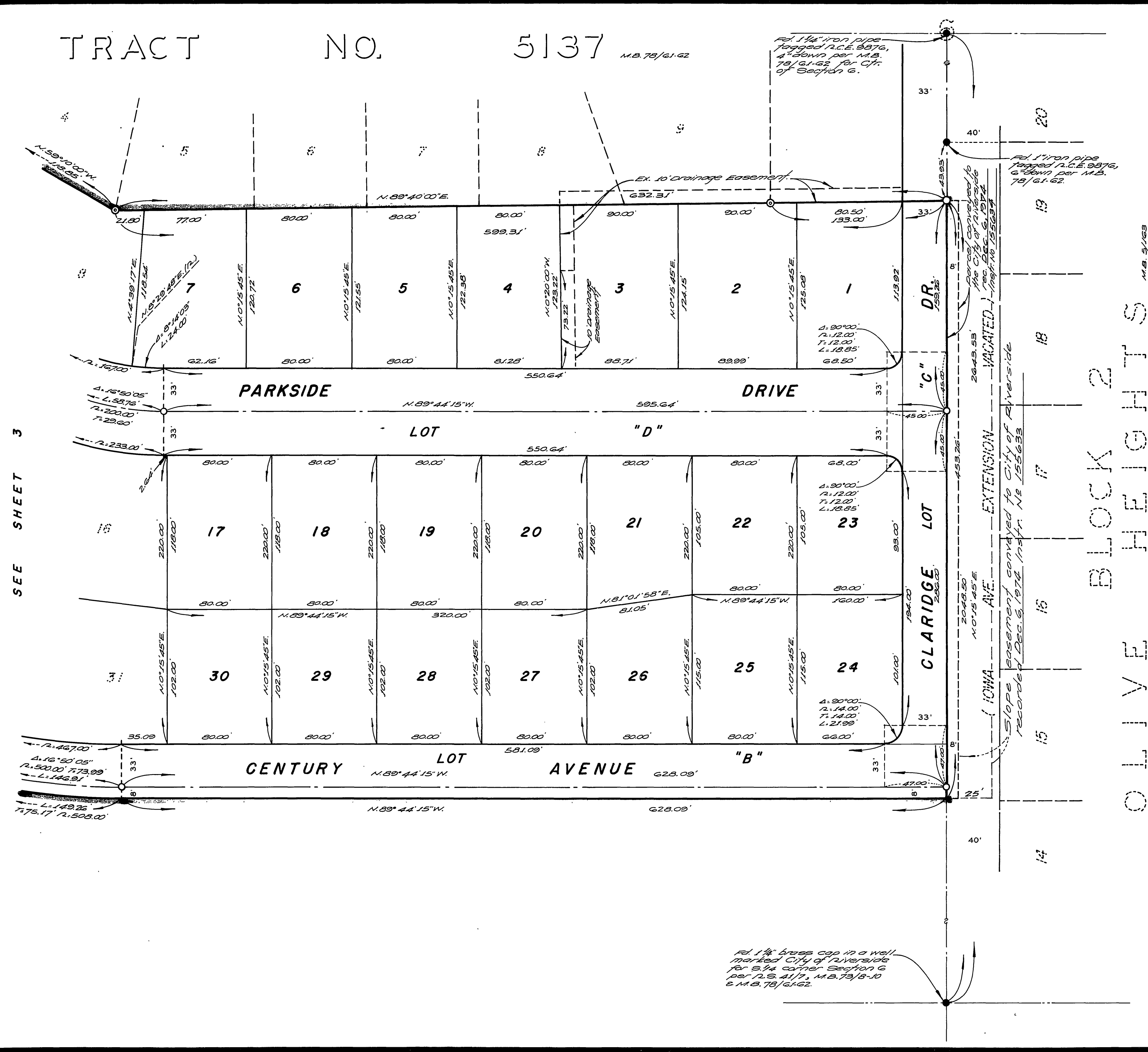
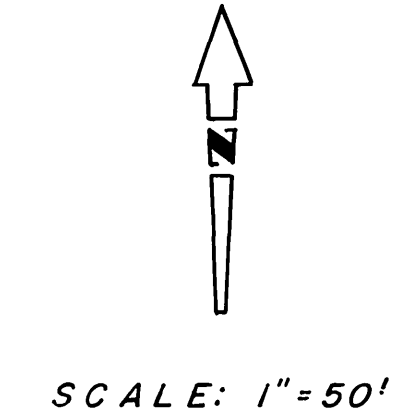
I hereby certify that I am a Registered Civil Engineer of the State of California, and that this map consisting of three (3) sheets correctly represents a true and complete survey made under my supervision during April, 1974, that all monuments of the character and location shown hereon are in place or will be in place within one (1) year from the recording date of this map; and that said monuments are sufficient to enable the survey to be retraced.

Dated June 19, 1974      Ernest N. Webb, P.C.E. 8376  
 by Ernest N. Webb

MB 84/63

IN THE CITY OF RIVERSIDE, RIVERSIDE COUNTY, CALIFORNIA  
**TRACT NO. 5900**  
 BEING A SUBDIVISION OF THE N.E.1/4 OF THE S.W.1/4  
 OF SECTION 6, T.3 S., R.4 W., S.B.M.

ALBERT A. WEBB ASSOCIATES—CIVIL ENGINEERS  
 RIVERSIDE CALIFORNIA  
 JUNE 1974



**ENGINEER'S NOTES**

1. Basis of bearings is the East line of the S.W. 1/4 of Sec. 6 T.3S., R.4W., S.B.M., taken as N.10°15'45"E. as shown by map on file in Book 78 of Maps, at pages 61-62 thereof, records of Riverside County, California.
2. Found 3/4" iron pipe tagged R.C.E. 9876, flush, at all points shown thus ⊙, per R.S. 49/66.
3. Found 1" iron pipe tagged R.C.E. 9876, flush, at all points shown thus ⊙, per M.B. 78/61-62.
4. Found monuments as noted of all points shown thus ●.
5. Set 1" iron pipe tagged R.C.E. 9876, flush, at all points shown thus ⊙, unless otherwise noted.
6. Set 1" iron pipe tagged R.C.E. 9876, flush, at all rear lot corners and angle points in lot lines.
7. Set steel pin and tag R.C.E. 9876 in top of curb of all side lot lines projected.
8. This tract contains 12.31 acres.

SEE SHEET 3

OLIVE BRIGHTS

M.B. 84/65

TR 5900 M.B. 84/65

Copy

84

M.B. 84/65  
TR 5900

SHEET 3 OF 3 SHEETS

IN THE CITY OF RIVERSIDE, RIVERSIDE COUNTY, CALIFORNIA

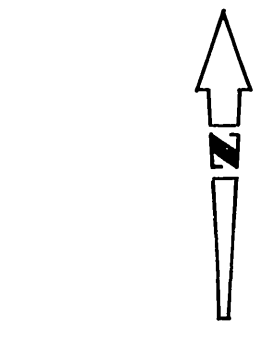
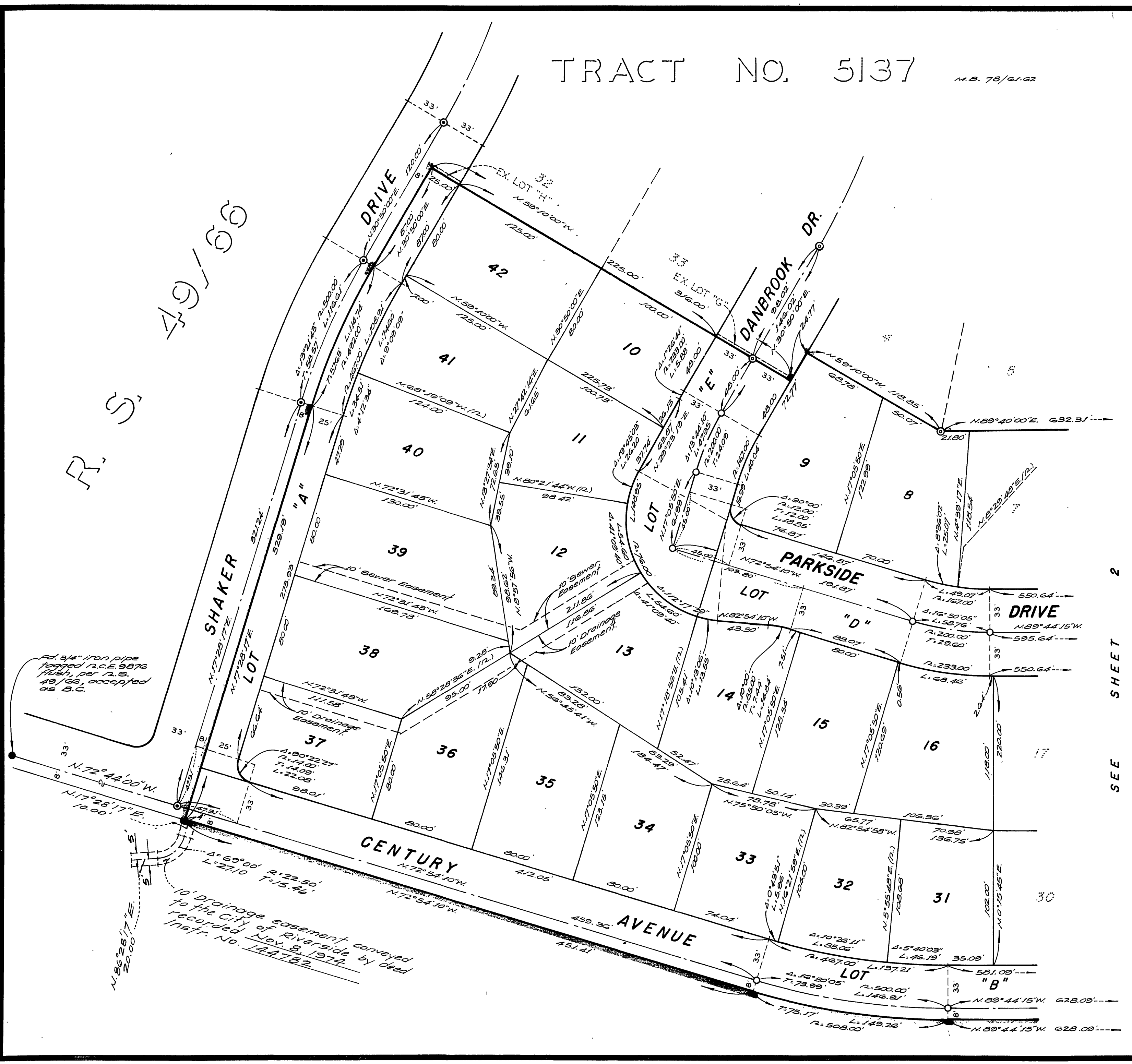
# TRACT NO. 5900

BEING A SUBDIVISION OF THE N.E. 1/4 OF THE S.W. 1/4 OF SECTION 6, T.3 S., R.4 W., S.B.M.

ALBERT A. WEBB ASSOCIATES—CIVIL ENGINEERS  
RIVERSIDE CALIFORNIA  
JUNE 1974

## TRACT NO. 5137

M.B. 78/61.62



SCALE: 1" = 50'

### ENGINEER'S NOTES

1. Basis of bearings is the East line of the SW 1/4 of Sec. 6 T.3S, R.4W, S.B.M., taken as N.0°15'45"E. as shown by map on file in Book 78 of Maps, of pages 61-62 thereof, records of Riverside County, California.
2. Found 3/4" iron pipe tagged R.C.E. 9876, flush, at all points shown thus ⊙, per R.S. 49/66.
3. Found 1" iron pipe tagged R.C.E. 9876, flush, at all points shown thus ⊙, per M.B. 78/61.62.
4. Found monuments as noted of all points shown thus ●.
5. Set 1" iron pipe tagged R.C.E. 9876, flush, at all points shown thus ⊙, unless otherwise noted.
6. Set 1" iron pipe tagged R.C.E. 9876, flush, at all rear lot corners and angle points in lot lines.
7. Set steel pin and tag R.C.E. 9876 in top of curb at all side lot lines projected.
8. This tract contains 12.31 acres.

SEE SHEET 2

49/66

R.S.

1/4" iron pipe  
tagged R.C.E. 9876  
flush, per R.S.  
49/66, accepted  
as B.C.

10' Drainage easement conveyed  
to the City of Riverside by deed  
recorded Nov. 8, 1974  
Instr. No. 124782

MB 84/65