



IN THE CITY OF RIVERSIDE, RIVERSIDE COUNTY, CALIFORNIA

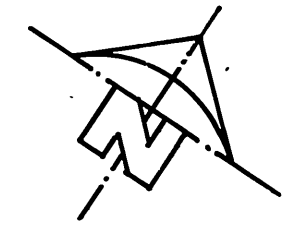
# TRACT NO. 7194

BEING A SUBDIVISION OF LOT 2 IN BLOCK 62 OF ARLINGTON HEIGHTS, AS SHOWN BY MAP BOOK 11, PAGES 20-21, RECORDS OF SAN BERNARDINO COUNTY, CALIFORNIA.

JULY 1976

SCALE: 1"=50'

ALBERT A. WEBB ASSOCIATES  
CIVIL ENGINEERS  
RIVERSIDE, CALIFORNIA

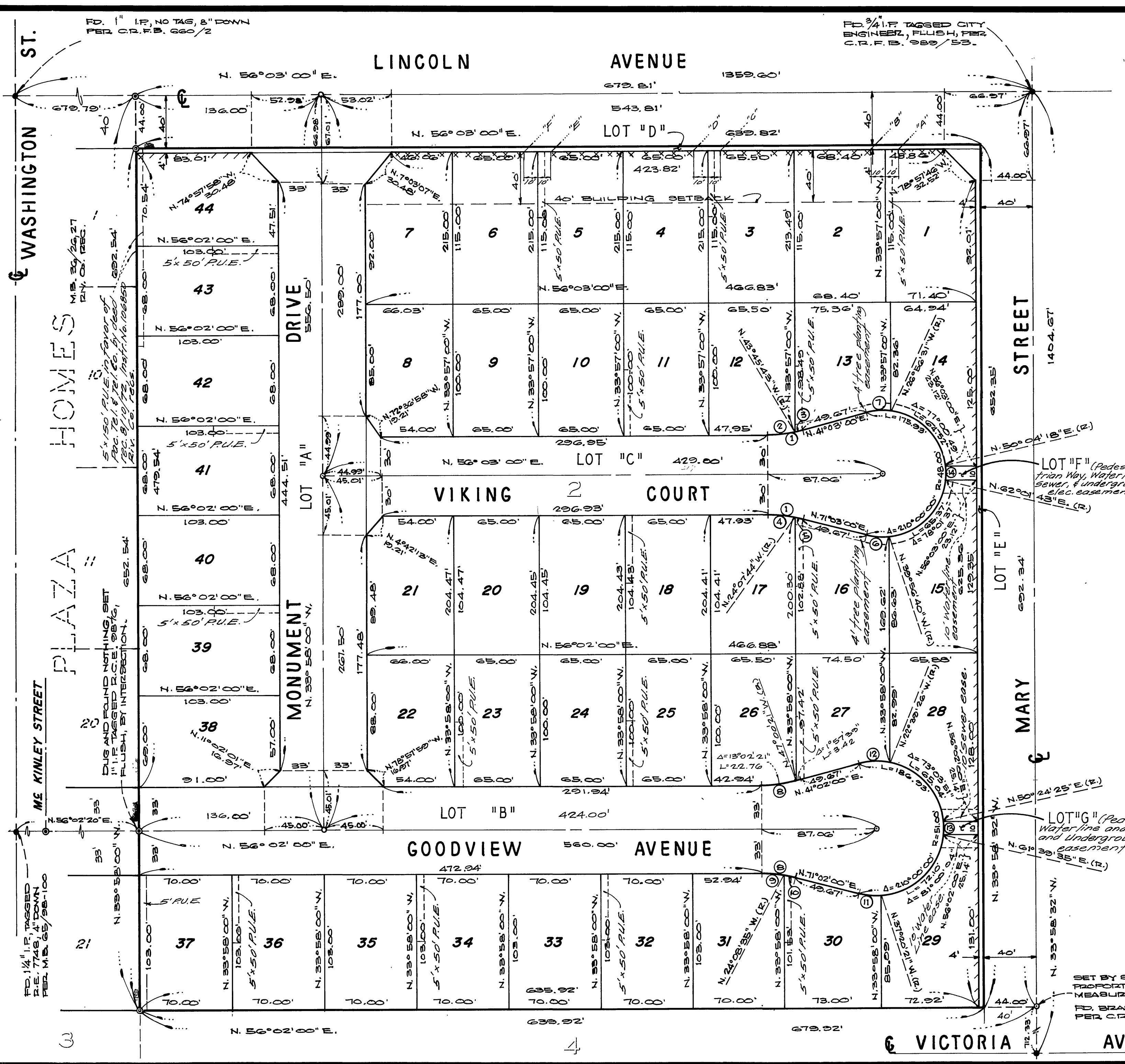


### ENGINEER'S NOTES

1. BASIS OF BEARINGS IS THE CENTERLINE OF MARY STREET TAKEN AS N. 33°58'32" N. AS SHOWN BY MAP OF PLAZA HOMES ON FILE IN BOOK 36 OF MAPS AT PAGE 27 THEREOF, RECORDS OF RIVERSIDE COUNTY, CALIFORNIA.
2. FOUND 2" IRON PIPE, TAGGED R.E. 7448, FLUSH, AT ALL POINTS SHOWN THUS ⊙ PER M.B. 36/27, RIV. CO. RECORDS.
3. FOUND 3/4" IRON PIPE, TAGGED R.E. 7448, FLUSH, AT ALL POINTS SHOWN THUS ⊙ PER M.B. 36/27, RIV. CO. RECORDS.
4. FOUND MONUMENTS AS NOTED AT ALL POINTS SHOWN THUS ●
5. SET 1" IRON PIPE, TAGGED R.C.E. 9876, FLUSH, AT ALL POINTS SHOWN THUS ○, UNLESS OTHERWISE NOTED.
6. SET 1" IRON PIPE, TAGGED R.C.E. 9876, FLUSH, AT ALL REAR LOT CORNERS AND ANGLE POINTS IN LOT LINES.
7. SET STEEL PIN AND TAG R.C.E. 9876 IN TOP OF CURB AT ALL SIDE LOT LINES PROJECTED.
8. THIS TRACT CONTAINS 9.58 ACRES.
9. Areas shown thus LLLLLL indicates - vehicular and pedestrian access rights waived.
10. Areas shown thus XXXXXX indicates vehicular access rights waived.

### CURVE DATA

NO	Δ	R.	T	L
①	15°00'00"	103.00'	-	26.97'
②	9°48'43"	103.00'	-	17.64'
③	5°11'17"	103.00'	-	9.33'
④	9°49'16"	103.00'	-	17.66'
⑤	5°10'44"	103.00'	-	9.31'
⑥	20°59'40"	48.00'	-	17.59'
⑦	22°00'29"	48.00'	-	18.44'
⑧	15°00'00"	100.00'	-	26.18'
⑨	9°48'25"	100.00'	-	17.15'
⑩	5°10'35"	100.00'	-	9.03'
⑪	18°22'21"	51.00'	-	16.35'
⑫	28°18'34"	51.00'	-	23.42'
⑬	11°15'10"	51.00'	-	10.02'
⑭	11°57'25"	48.00'	-	10.02'



M.B. 89/85

M.B. 89/85

MB 89/85