

# TRACT NO. 8387

BEING A SUBDIVISION OF LOT 10 OF M. M. KENDALL'S  
SUBDIVISION, AS PER MAP RECORDED IN BOOK 8 OF  
MAPS, PAGE 40, RECORDS OF THE COUNTY OF SAN  
BERNARDINO, CALIFORNIA, IN SECTION 8, T.2S., R.4W., S.B.M.  
WES ENGINEERING COMPANY  
OCTOBER 1977

**FILED**  
on Feb. 27, 1978  
AT 2:50 P.M.  
NO. 36860  
W. B. BALOGH  
COUNTY RECORDER

by Harold C. Beck  
REC'D \$7.00  
FILED BY County Clerk  
SUBDU. DIST. FEES  
AMERICAN TITLE COMPANY

### OWNER'S CERTIFICATE

I, the undersigned, being the owner of the land described in the subdivision map shown on the map attached to this certificate, do hereby certify that the map is a true and correct copy of the original map as shown to me by the engineer who prepared the same, and that the same is in accordance with the provisions of the laws of the State of California relating to the subdivision of land.

WES DEVELOPERS, INC. A California Corporation  
William S. Sweeney PRESIDENT  
William S. Sweeney SECRETARY-TREASURER

### SURVEYOR'S CERTIFICATE

I, JACK B. SANDERSON, the duly certified surveyor for the State of California, do hereby certify that I and my assistants have surveyed the land described in the map attached to this certificate, and that the same is in accordance with the provisions of the laws of the State of California relating to the subdivision of land.

DATED FEB. 21, 1978. JACK SANDERSON  
Jack B. Sanderson SURVEYOR

### COUNTY SURVEYOR'S CERTIFICATE

I, the undersigned, being the duly certified surveyor for the State of California, do hereby certify that I and my assistants have surveyed the land described in the map attached to this certificate, and that the same is in accordance with the provisions of the laws of the State of California relating to the subdivision of land.

DATED FEB. 17, 1978. A. E. HENCOCK  
A. E. Hencock COUNTY SURVEYOR

### NOTARY ACKNOWLEDGEMENT

OFFICIAL SEAL  
LAUREL F. MCKEE  
NOTARY PUBLIC - CALIFORNIA  
PRINCIPAL OFFICE IN  
ORANGE COUNTY  
My Commission Expires July 15, 1980

Laurel F. McKee  
NOTARY PUBLIC IN AND FOR  
COUNTY OF RIVERSIDE, CALIFORNIA  
MY COMMISSION EXPIRES 7/15/80

### BOARD OF SUPERVISOR'S CERTIFICATE

THE COUNTY OF RIVERSIDE, STATE OF CALIFORNIA, HEREBY BY AND THROUGH ITS BOARD OF SUPERVISORS, DO HEREBY CERTIFY THAT THE MAP ATTACHED TO THIS CERTIFICATE IS A TRUE AND CORRECT COPY OF THE ORIGINAL MAP AS SHOWN TO ME BY THE ENGINEER WHO PREPARED THE SAME, AND THAT THE SAME IS IN ACCORDANCE WITH THE PROVISIONS OF THE LAWS OF THE STATE OF CALIFORNIA RELATING TO THE SUBDIVISION OF LAND.

DATED February 21, 1978 by Robert O. DeLoach  
CHAIRMAN, BOARD OF SUPERVISORS  
COUNTY OF RIVERSIDE, STATE OF CALIFORNIA

ATTEST:  
COUNTY CLERK AND EX-OFFICIO SUPERVISOR  
by Flaney Devine DEPUTY

### TAX COLLECTOR'S CERTIFICATE

I, the undersigned, being the duly certified tax collector for the State of California, do hereby certify that the records of the County of Riverside show that the within map for unpaid state taxes, municipal or local taxes or special assessments collected is correct.

DATED FEBRUARY 15, 1978 by Harold C. Beck DEPUTY  
COUNTY TAX COLLECTOR

### TAX BOND CERTIFICATE

I, the undersigned, being the duly certified tax collector for the State of California, do hereby certify that the records of the County of Riverside show that the within map for unpaid state taxes, municipal or local taxes or special assessments collected is correct.

### SOIL REPORT

A SOIL ANALYSIS AND SOIL REPORT WAS OBTAINED BY C. B. WATKINS AND ASSOCIATES, INC. ON FEBRUARY 15, 1978, AS REQUIRED BY THE HEALTH AND SAFETY CODE.

# TRACT NO. 8387

BEING A SUBDIVISION OF LOT 10 OF M. M. KENDALL'S SUBDIVISION, AS PER MAP RECORDED IN BOOK 8, OF MAPS, PAGE 40, RECORDS OF THE COUNTY OF SAN BERNARDINO, CALIFORNIA, IN SECTION 8, T.2S, R.4W, S.B.M. W.E.S. ENGINEERING COMPANY

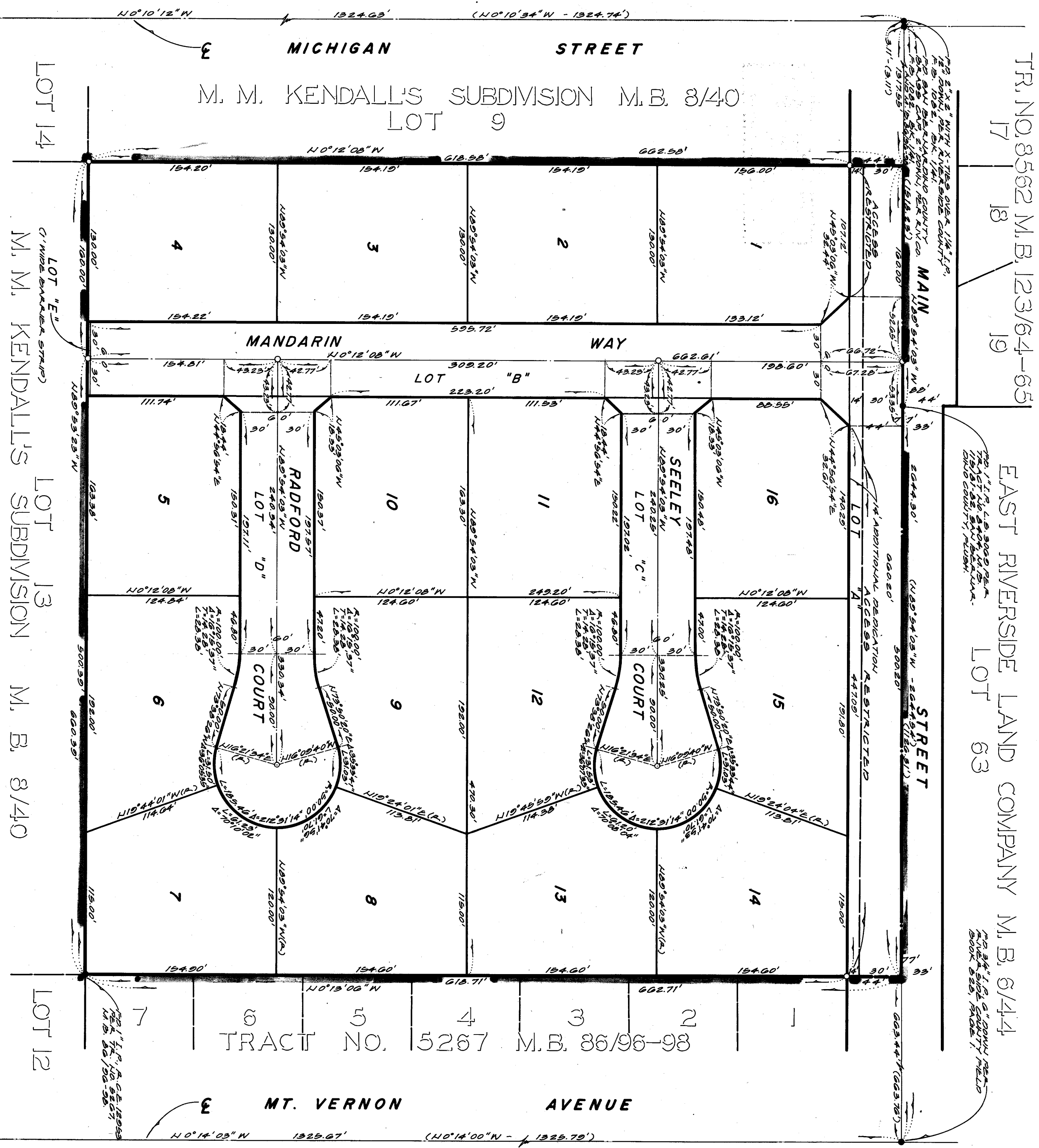
OCTOBER 1977



SCALE 1"=60'

### SURVEYOR'S NOTES

1. THIS MAP WAS PREPARED FROM THE DATA FURNISHED BY THE LANDOWNER, M. M. KENDALL, AND THE SURVEY WAS MADE IN ACCORDANCE WITH THE PROVISIONS OF THE SURVEYING ACTS OF CALIFORNIA.
2. INDICATES MONUMENTS FOUND AS NOTED THEREON AND THE LOCATION OF THE MONUMENTS IS SHOWN BY THE DOTTED LINES AND THE DISTANCES FROM THE MONUMENTS TO THE CORNERS OF THE LOTS ARE SHOWN BY THE DIMENSIONS.
3. SET LINE AND LINES AT 9.125' FROM THE CORNER OF LOT 10 TO THE CENTERLINE OF THE SUBDIVISION CONTAINS 10 LOTS.
4. THIS SUBDIVISION CONTAINS 10.05 ACRES.
5. ALL DISTANCES ARE IN FEET AND DECIMALS THEREOF.
6. THIS SUBDIVISION CONTAINS 10.05 ACRES.
7. THIS SUBDIVISION CONTAINS 10.05 ACRES.
8. THIS SUBDIVISION CONTAINS 10.05 ACRES.
9. THIS SUBDIVISION CONTAINS 10.05 ACRES.
10. THIS SUBDIVISION CONTAINS 10.05 ACRES.



LOT 14  
M. M. KENDALL'S SUBDIVISION M. B. 8/40

LOT 13  
M. M. KENDALL'S SUBDIVISION M. B. 8/40

LOT 12

TR. NO. 8562 M. B. 123/64-65  
EAST RIVERSIDE LAND COMPANY M. B. 6/44

TRACT NO. 5267 M. B. 86/96-98

MICHIGAN STREET  
MANDARIN WAY  
CENTER STREET  
MT. VERNON AVENUE

MB 96/14

Copy 96/14