

# TRACT NO. 10619

BEING A SUBDIVISION OF BLOCKS 2, 6, 9, AND 10 AS SHOWN BY MAP OF PLANS OF SUBDIVISION  
FOR M.A. MURPHY FILED IN BOOK 8, PAGE 66 OF MAPS, RECORDS OF SAN BERNARDINO, CALIFORNIA,  
IN SECTION 5, T. 2 S., R. 4 W., S.B.M.

RECORDER'S CERTIFICATE  
Filed this 8 day of Dec  
1981, at 4:00 P.M. in book 123  
of TRACT Maps, at pages 35 & 36  
at the request of the County Clerk.  
Rec: 5/2 Donald D. Sullivan  
County Recorder  
No. 227327 By William D. Decker  
Deputy  
SUBDIVISION FIRST AMERICAN TITLE  
GUARANTEE: INSURANCE COMPANY

FRED W. HENSTRIDGE L.S. 3258 OCTOBER, 1978 SOUTHWEST ENGINEERING

### OWNER'S CERTIFICATE

I hereby certify that I am the owner of the land included within the subdivision shown hereon; that I am the only person whose consent is necessary to pass a clear title to said land; that I consent to the making and recording of this subdivision map as shown within the ~~dis-~~ dis- ~~infective~~ border line. I hereby dedicate to public use for street and public utility purposes: Lots "A" through "J" inclusive. As a condition of dedication of Lot "A" (Center Street), Lot "B" (Center Street), Lot "C" (Mt. Vernon Avenue), and Lot "D" (Spring Street), the owners of Lots 1 through 12, inclusive Lot 19, Lots 30 through 44, inclusive Lots 50 and 51 and Lot 60 abutting these highways and during such time have no rights of access whatever as such except the general easement of travel. I hereby dedicate to the County of Riverside (1) one foot barrier strips, Lots "K" through "N" inclusive for road and access control.

*R. B. SEE*  
R. B. SEE (OWNER)

### SURVEYOR'S CERTIFICATE

I hereby certify that I am a Licensed Land Surveyor of the State of California and that this map consisting of ~~two (2) sheets~~ correctly represents a survey made under my supervision during October of 1978; that all monuments shown hereon actually exist and their positions are correctly shown or will be in place within one (1) year from recordation of this map. The monuments will be sufficient to enable the survey to be retraced. The Survey is true and complete as shown.

Dated OCTOBER 11, 1981

*Fred W. Henstridge*  
Fred W. Henstridge L.S. 3258

### COUNTY SURVEYOR'S CERTIFICATE

I hereby certify that I have examined this map and found it to be substantially the same as it appeared on the tentative map of Tract 10619s filed, amended and approved by the Board of Supervisors on June 27, 1978; that all provisions of applicable State law and County Regulations have been complied with; and that I am satisfied this map is technically correct.

Dated Dec. 2, 1981

*A. E. Newcomb*  
A. E. Newcomb  
COUNTY SURVEYOR

### BOARD OF SUPERVISORS' CERTIFICATE

The County of Riverside, State of California, by and through its duly authorized officers, hereby approves said final map and accepts the offers of dedication made hereon.

Dated: 12-8-81 County of Riverside, State of California  
BY: *A. D. Sullivan*  
Chairman, Board of Supervisors

ATTEND: Donald D. Sullivan  
County Clerk and Ex-Officio Clerk  
of the Board of Supervisors

By: *Donna Bower* Deputy

STATE OF CALIFORNIA) SS  
COUNTY OF Orange)

On ~~November 19, 1981~~ before me, Royanne Lynn Eyrke, a Notary Public in and for said State, personally appeared R. B. See, an unmarried man, known to me to be the person whose name is subscribed to the within instrument and acknowledged that R. B. See executed the same.

WITNESS my hand and official seal. My commission Expires August 31, 1984



*Royanne Lynn Eyrke*  
Notary Public in and for said County  
and State

### TAX COLLECTOR'S CERTIFICATE

I hereby certify that according to the records of this office as of this date, there are no liens against the property shown on the within map for unpaid State, County, Municipal or local taxes or special assessments collected as taxes,

Dated November 13, 1981

Donna Bower Babcock  
County Tax Collector

By: *Fanny Knotts*  
Deputy

### TAX BOND CERTIFICATE:

~~I hereby certify that a bond in the sum of \$ \_\_\_\_\_ has been executed and filed with the Board of Supervisors of the County of Riverside, California, conditioned upon the payment of all taxes State, County, Municipal or local, and all special assessments collected as taxes, which at the time of filing of this map with the County Recorder are a lien against said property but not yet payable and said bond has been duly approved by said Board of Supervisors.~~

~~Dated \_\_\_\_\_, 19\_\_~~  
~~County Clerk and Ex-Officio  
Clerk of the Board of Supervisors~~  
BY: \_\_\_\_\_ Deputy

### EASEMENT NOTE

▲ Southern California Edison Company - holder of an easement for pole lines, conduits & incidental purposes per instrument recorded October 18, 1956 in Book 1967, page 406 of Official Records.

### SOIL REPORT

A preliminary soil report was prepared by Robert J. Johnson, R.C.E., 27060 on the 27th day of July, 1977, as required by the Health and Safety Code.

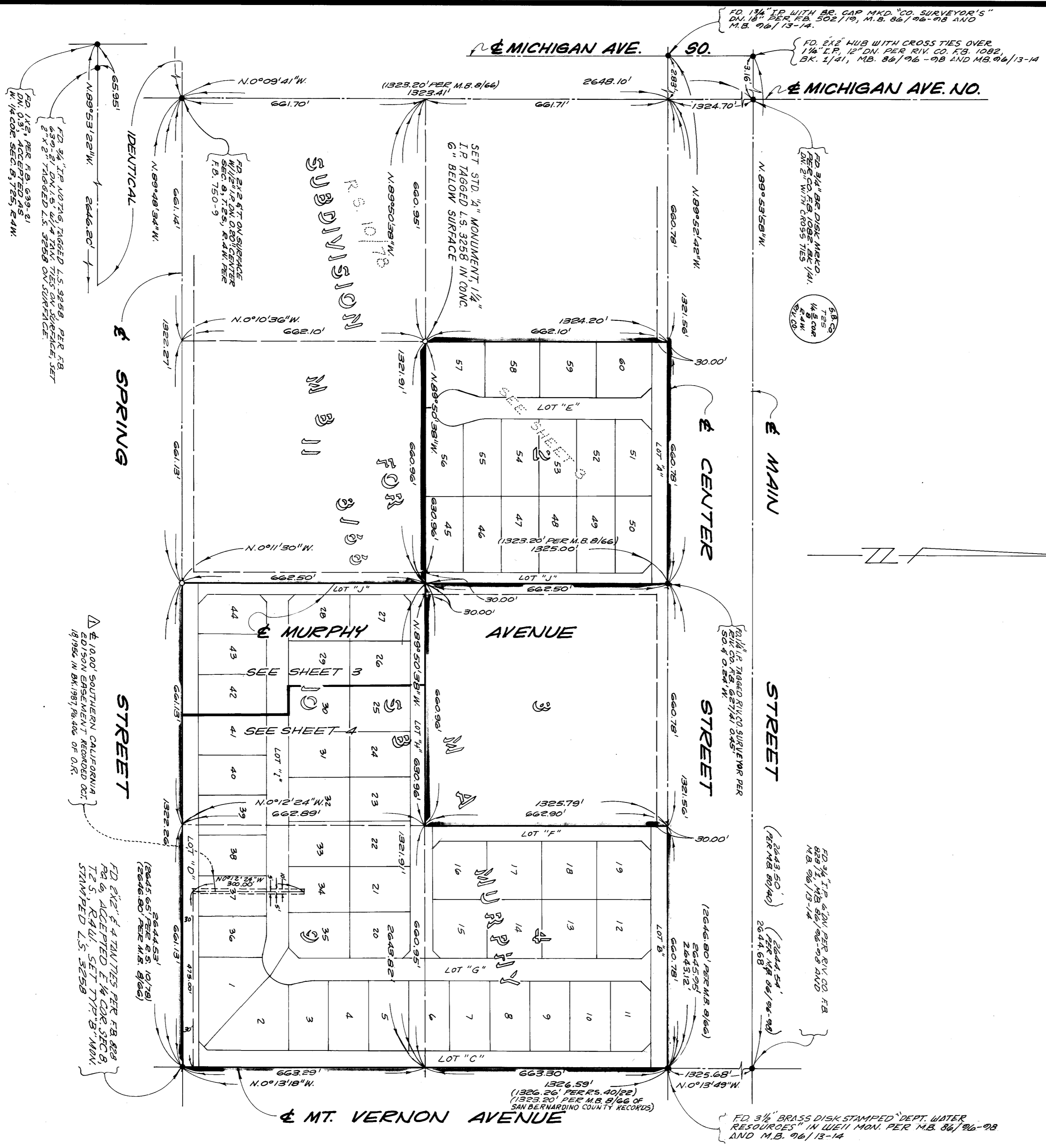
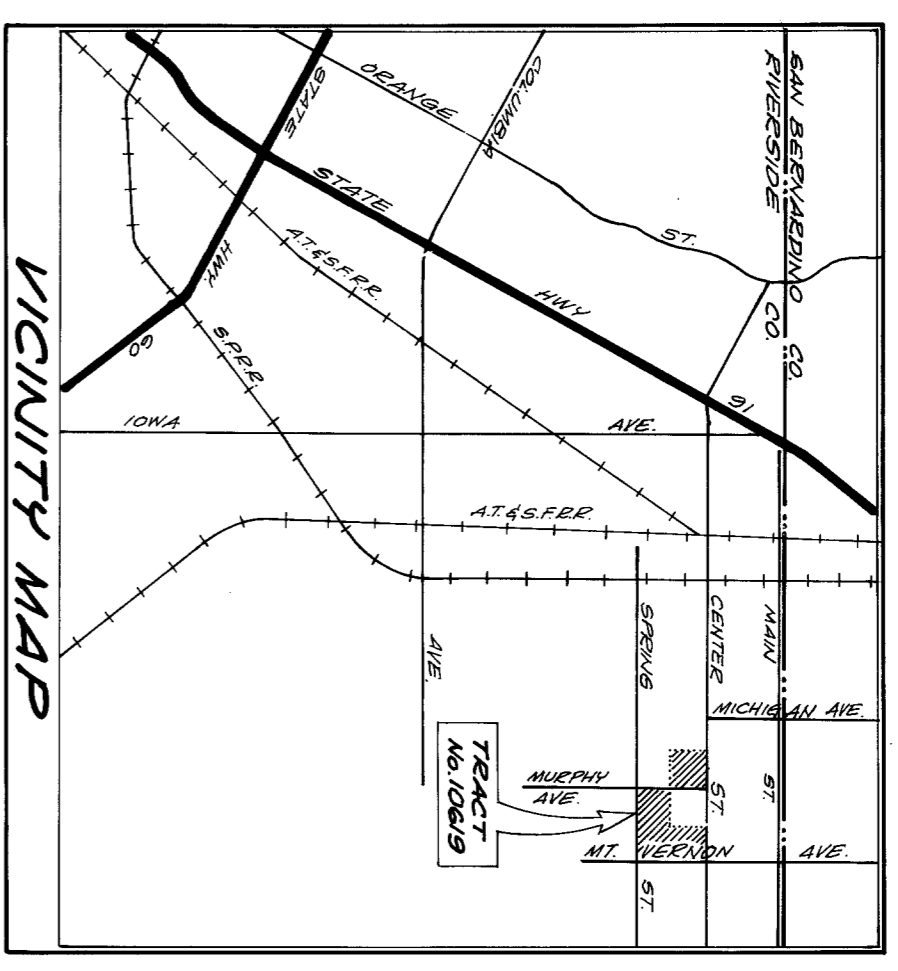
SCALE: 1"=200'

IN THE UNINCORPORATED TERRITORY OF THE COUNTY OF RIVERSIDE  
STATE OF CALIFORNIA

SHEET 2 OF 4 SHEETS

# TRACT NO. 10619

BEING A SUBDIVISION OF BLOCKS 2, 4, 9 AND 10 AS SHOWN BY MAP OF PLANS OF SUBDIVISION FOR M.A. MURPHY FILED IN BOOK 8, PAGE 66 OF MAPS, RECORDS OF SAN BERNARDINO, CALIFORNIA, IN SECTION 8, T. 2 S., R. 4 W., S.B.M.  
FRED W. HENSTRIDGE, L.S. 3258  
OCTOBER, 1978  
SOUTHWEST ENGINEERING



- SURVEYOR'S NOTES:**
- Indicates monuments found as noted.
  - Indicates Std. "B" monument, copperweld, stamped L.S. 3258, set flush.
  - Set Std. "C" monument, Redwood 2"x2", tagged L.S. 3258, at all rear lot corners and corner curb back points, unless otherwise noted.
  - Set Std. "E" monument, lead and tag, L.S. 3258, in top of curb at all side lot lines projected.
  - All monuments set per Co. Ord. 461.3
  - Total gross acreage = 36.663 acres.
  - Indicates restricted access.
  - Indicates set Std. "A" monument, 1/4" I.P. tagged L.S. 3258 in concrete, 6" below surface.

**BASIS OF BEARINGS:**

The bearings shown hereon are based on the centerline of Center Street bearing N 89°52'42" W as shown on a map of Tract NO. 5267, M.B. 86/96-98.

SCALE: 1"=80'

IN THE UNINCORPORATED TERRITORY OF THE COUNTY OF RIVERSIDE  
STATE OF CALIFORNIA

SHEET 3 OF 4 SHEETS

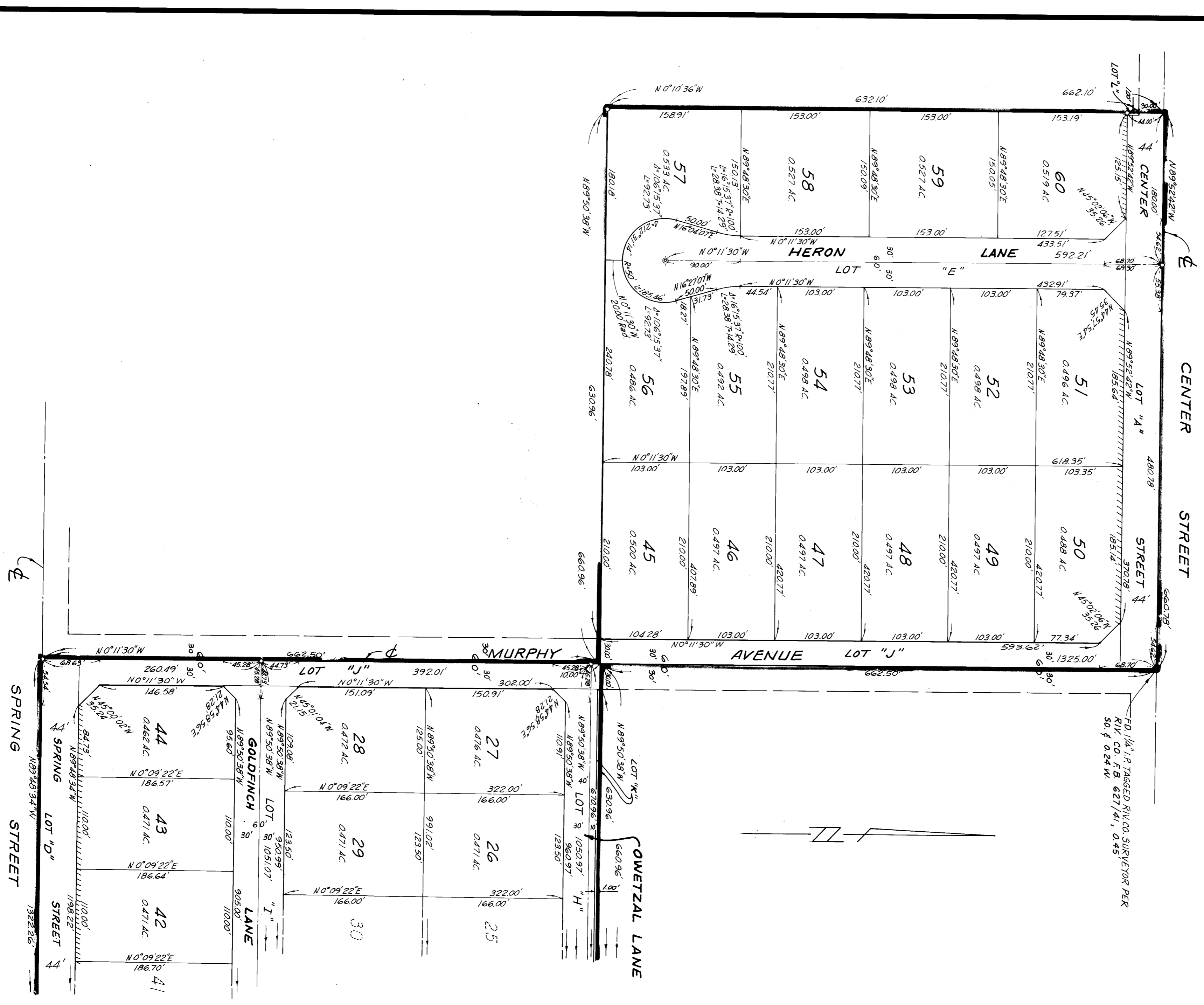
# TRACT NO. 10619

BEING A SUBDIVISION OF BLOCKS 2, 4, 9, AND 10 AS SHOWN BY MAP OF PLANS OF SUBDIVISION FOR  
M.A. MURPHY FILED IN BOOK 8, PAGE 66 OF MAPS, RECORDS OF SAN BERNARDINO, CALIFORNIA, IN  
SECTION 8, T. 2 S., R. 4 W., S.B.M.

FILED W. HENSTRIDGE L.S. 3258 OCTOBER, 1978

SOUTHWEST ENGINEERING

NOTE:  
SEE SHEET 2 FOR BASIS OF BEARINGS  
AND MONUMENT NOTES.



3282-156

SCALE: 1"=80'

IN THE UNINCORPORATED TERRITORY OF THE COUNTY OF RIVERSIDE  
STATE OF CALIFORNIA

SHEET 4 OF 4 SHEETS

# TRACT NO. 10619

BEING A SUBDIVISION OF BLOCKS 2, 4, 9, AND 10 AS SHOWN BY MAP OF PLANS OF SUBDIVISION FOR M.A. MORPHY FILED IN BOOK 8, PAGE 66 OF MAPS, RECORDS OF SAN BERNARDINO, CALIFORNIA, IN SECTION 8, T. 2 S., R. 4 W., S.B.M.

FRED W. HENSTRIDGE L.S. 3258 OCTOBER, 1978 SOUTHWEST ENGINEERING

NOTE:  
SEE SHEET 2 FOR BASIS OF BEARINGS  
AND MONUMENT NOTES.

FD. DEPT. WATER RESOURCES  
B.R. 289/3

