

IN THE CITY OF RIVERSIDE, RIVERSIDE COUNTY, CALIFORNIA

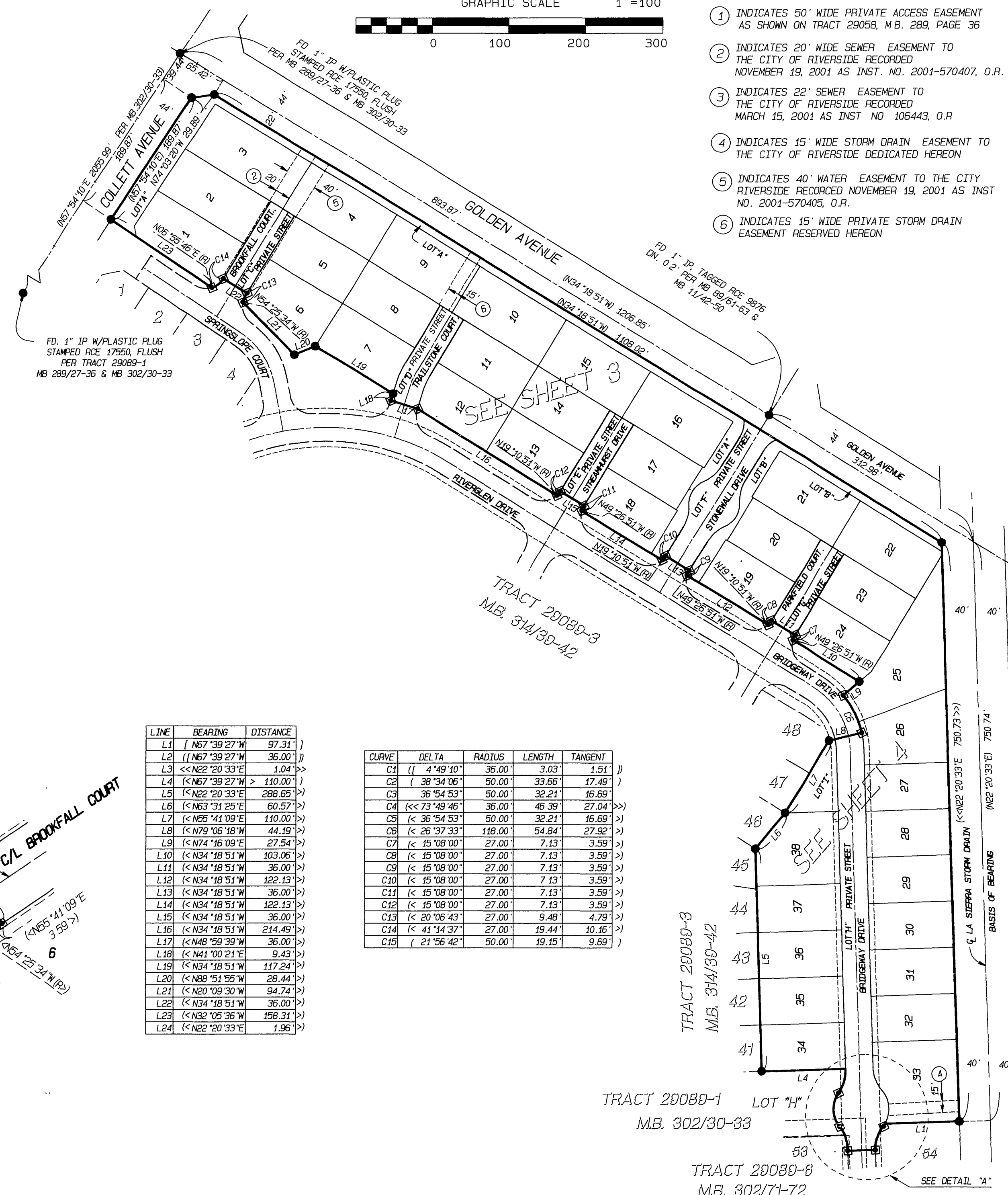
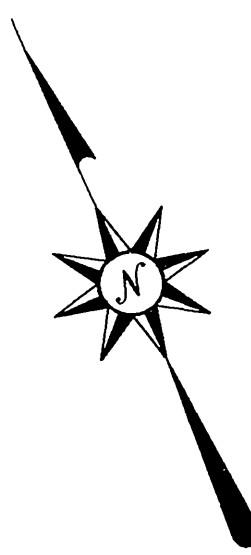
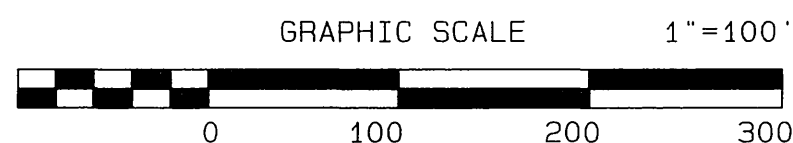
TRACT NO. 29089

BEING A SUBDIVISION OF LOT 18 OF TRACT NO. 29058 AS SHOWN BY MAP ON FILE IN BOOK 289 OF MAPS, PAGES 27 THROUGH 36 INCLUSIVE THEREOF, RECORDS OF RIVERSIDE COUNTY, CALIFORNIA, IN SECTION 15, TOWNSHIP 3 SOUTH, RANGE 6 WEST, S.B.M. **ALBERT A. WEBB ASSOCIATES - CIVIL ENGINEERS** RIVERSIDE, CALIFORNIA **APRIL, 2002**

SURVEYOR'S NOTES:

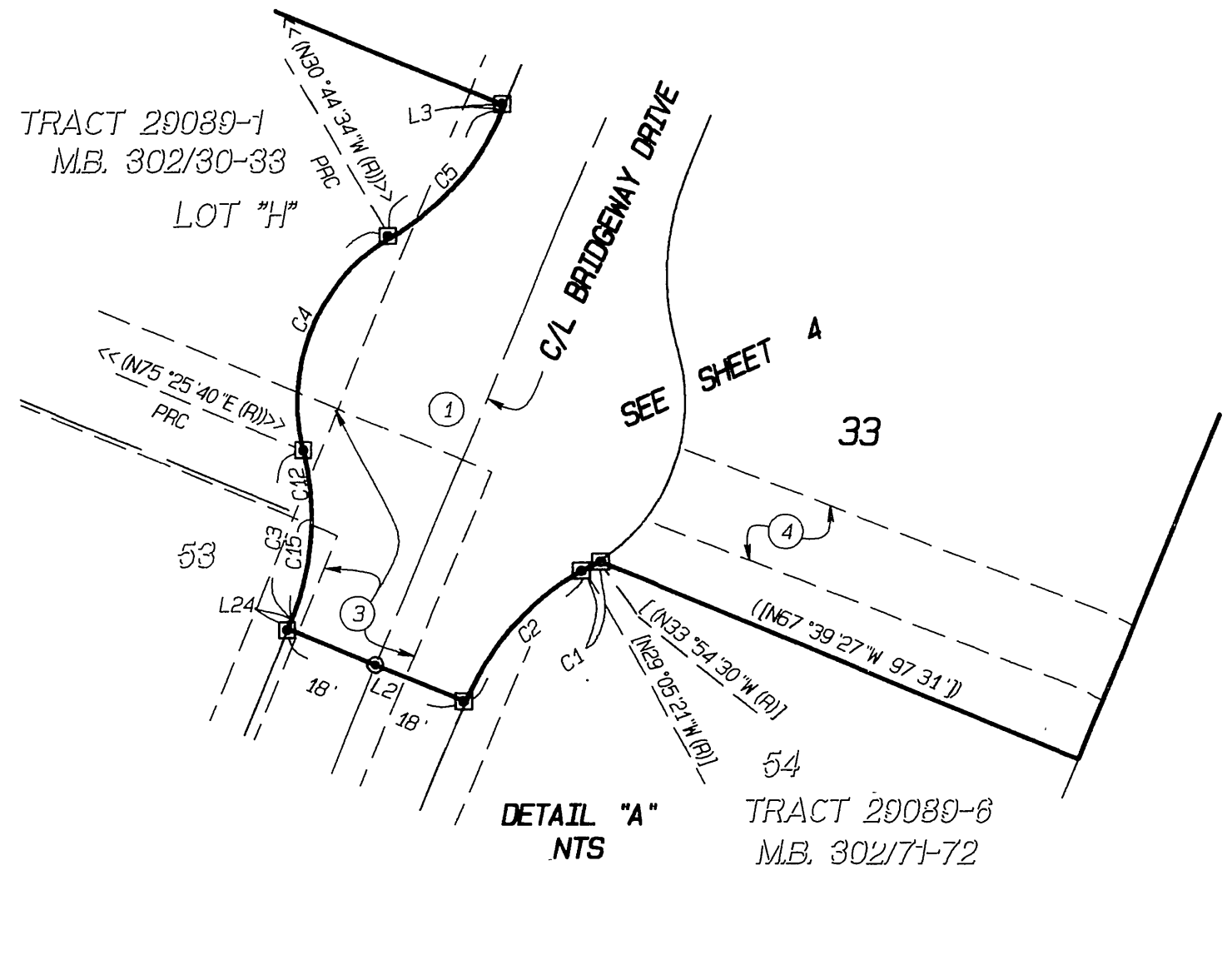
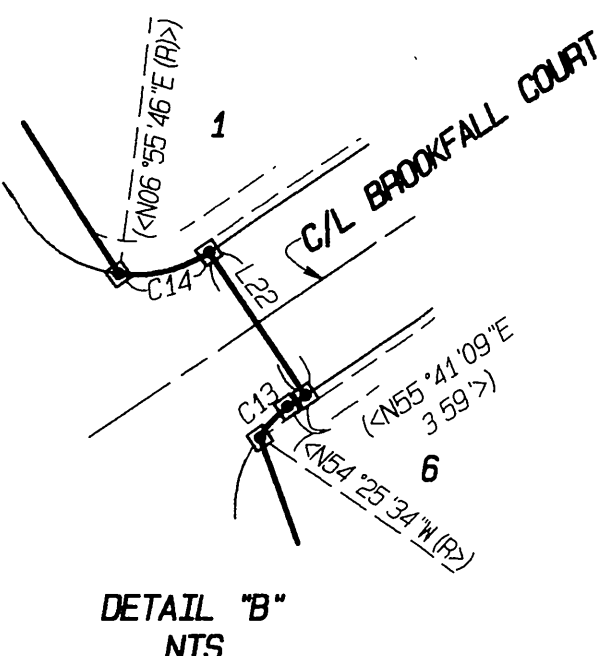
1. BASIS OF BEARINGS IS THE WESTERLY RIGHT OF WAY LINE OF LA SIERRA STORM DRAIN CHANNEL TAKEN AS NORTH 22° 20' 33" EAST PER TRACT NO. 29058 ON FILE IN BOOK 289, PAGES 27-36, RECORDS OF RIVERSIDE COUNTY, CALIFORNIA
2. (●) FD SPIKE & TAG ON STREET CENTERLINE, STAMPED LS 5529, FLUSH, PER TRACT 29089-3, M.B. 314/39-42
3. (■) FD STEEL PIN AND TAG STAMPED, L.S. 5529, IN TOP OF CURB, IN LIEU OF 1" IRON PIPE AND PLASTIC PLUG STAMPED RCE 17550 PER TRACT 29058.
4. (●) INDICATES FOUND 1" IRON PIPE W/PLASTIC PLUG STAMPED, L.S. 5529, FLUSH, IN LIEU OF 1" IRON PIPE AND PLASTIC PLUG STAMPED RCE 17550 PER TRACT 29058.
5. (○) INDICATES SET SPIKE & TAG ON STREET CENTERLINES, STAMPED LS 5529
6. (▲) INDICATES FOUND SPIKE & TAG ON STREET CENTERLINES, STAMPED LS 5529, PER TRACT 29089-3, M.B. 314/39-42.
7. SET 1" IRON PIPE WITH PLASTIC PLUG STAMPED LS 5529, FLUSH AT ALL REAR LOT CORNERS, CORNER CUT BACKS AND ANGLE POINTS. WHERE CONCRETE BLOCK WALLS EXIST SET NAIL AND TAG LS 5529 UP 12" ON INSIDE FACE OF REAR BLOCK WALL IN LIEU OF 1" IRON PIPE AT REAR LOT CORNERS.
8. SET STEEL PIN AND TAG LS 5529 IN TOP OF CURB AT ALL SIDE LOT LINES PROJECTED.
9. () INDICATES RECORD AND MEASURED DATA (R & M) PER TRACT 29058, M.B. 289/27-36 UNLESS OTHERWISE NOTED
10. [] INDICATES RECORD AND MEASURED DATA (R & M) PER TRACT 29089-6, M.B. 302/71-72.
11. < > INDICATES RECORD AND MEASURED DATA (R & M) PER TRACT 29089-3, M.B. 314/39-42.
12. << >> INDICATES RECORD AND MEASURED DATA (R&M) PER TRACT 29089-1, M.B. 302/30-33.
13. THIS TRACT CONTAINS 8.55 ACRES.
14. P.U.E. & WTR.E. INDICATES PUBLIC ELECTRIC AND WATERLINE EASEMENT
15. (---) INDICATES P.U.E. & WTR.E. AS SHOWN

1. INDICATES 50' WIDE PRIVATE ACCESS EASEMENT AS SHOWN ON TRACT 29058, M.B. 289, PAGE 36
2. INDICATES 20' WIDE SEWER EASEMENT TO THE CITY OF RIVERSIDE RECORDED NOVEMBER 19, 2001 AS INST. NO. 2001-570407, O.R.
3. INDICATES 22' SEWER EASEMENT TO THE CITY OF RIVERSIDE RECORDED MARCH 15, 2001 AS INST NO 106443, O.R.
4. INDICATES 15' WIDE STORM DRAIN EASEMENT TO THE CITY OF RIVERSIDE DEDICATED HEREON
5. INDICATES 40' WATER EASEMENT TO THE CITY RIVERSIDE RECORDED NOVEMBER 19, 2001 AS INST NO. 2001-570405, O.R.
6. INDICATES 15' WIDE PRIVATE STORM DRAIN EASEMENT RESERVED HEREON



LINE	BEARING	DISTANCE
L1	(N67°39'27\"	97.31)
L2	(N67°39'27\"	36.00)
L3	<< N22°20'33\"	1.04 >>
L4	(N67°39'27\"	> 110.00)
L5	(N22°20'33\"	288.65 >
L6	(N63°31'25\"	60.57 >
L7	(N85°41'09\"	110.00 >
L8	(N79°06'18\"	44.19 >
L9	(N74°16'09\"	27.54 >
L10	(N34°18'51\"	103.06 >
L11	(N34°18'51\"	36.00 >
L12	(N34°18'51\"	122.13 >
L13	(N34°18'51\"	36.00 >
L14	(N34°18'51\"	122.13 >
L15	(N34°18'51\"	36.00 >
L16	(N34°18'51\"	214.49 >
L17	(N48°59'39\"	36.00 >
L18	(N41°00'21\"	9.43 >
L19	(N34°18'51\"	117.24 >
L20	(N88°51'55\"	28.44 >
L21	(N20°09'30\"	94.74 >
L22	(N34°18'51\"	36.00 >
L23	(N32°05'36\"	158.31 >
L24	(N22°20'33\"	1.96 >

CURVE	DELTA	RADIUS	LENGTH	TANGENT
C1	(4°49'10\"	36.00'	3.03'	1.51'
C2	(38°34'06\"	50.00'	33.66'	17.49'
C3	(36°54'53\"	50.00'	32.21'	16.69'
C4	<< 73°49'46\"	36.00'	46.39'	27.04'
C5	(36°54'53\"	50.00'	32.21'	16.69'
C6	(26°37'33\"	118.00'	54.84'	27.92'
C7	(15°08'00\"	27.00'	7.13'	3.59'
C8	(15°08'00\"	27.00'	7.13'	3.59'
C9	(15°08'00\"	27.00'	7.13'	3.59'
C10	(15°08'00\"	27.00'	7.13'	3.59'
C11	(15°08'00\"	27.00'	7.13'	3.59'
C12	(15°08'00\"	27.00'	7.13'	3.59'
C13	(20°06'43\"	27.00'	9.48'	4.79'
C14	(41°14'37\"	27.00'	19.44'	10.16'
C15	(21°56'42\"	50.00'	19.15'	9.69'

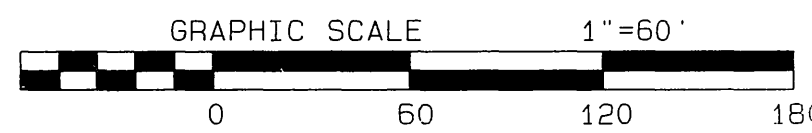


IN THE CITY OF RIVERSIDE, RIVERSIDE COUNTY, CALIFORNIA

TRACT NO. 29089

BEING A SUBDIVISION OF LOT 18 OF TRACT NO. 29058 AS SHOWN BY MAP ON FILE IN BOOK 289 OF MAPS, PAGES 27 THROUGH 36 INCLUSIVE THEREOF, RECORDS OF RIVERSIDE COUNTY, CALIFORNIA, IN SECTION 15, TOWNSHIP 3 SOUTH, RANGE 6 WEST, S.B.M.

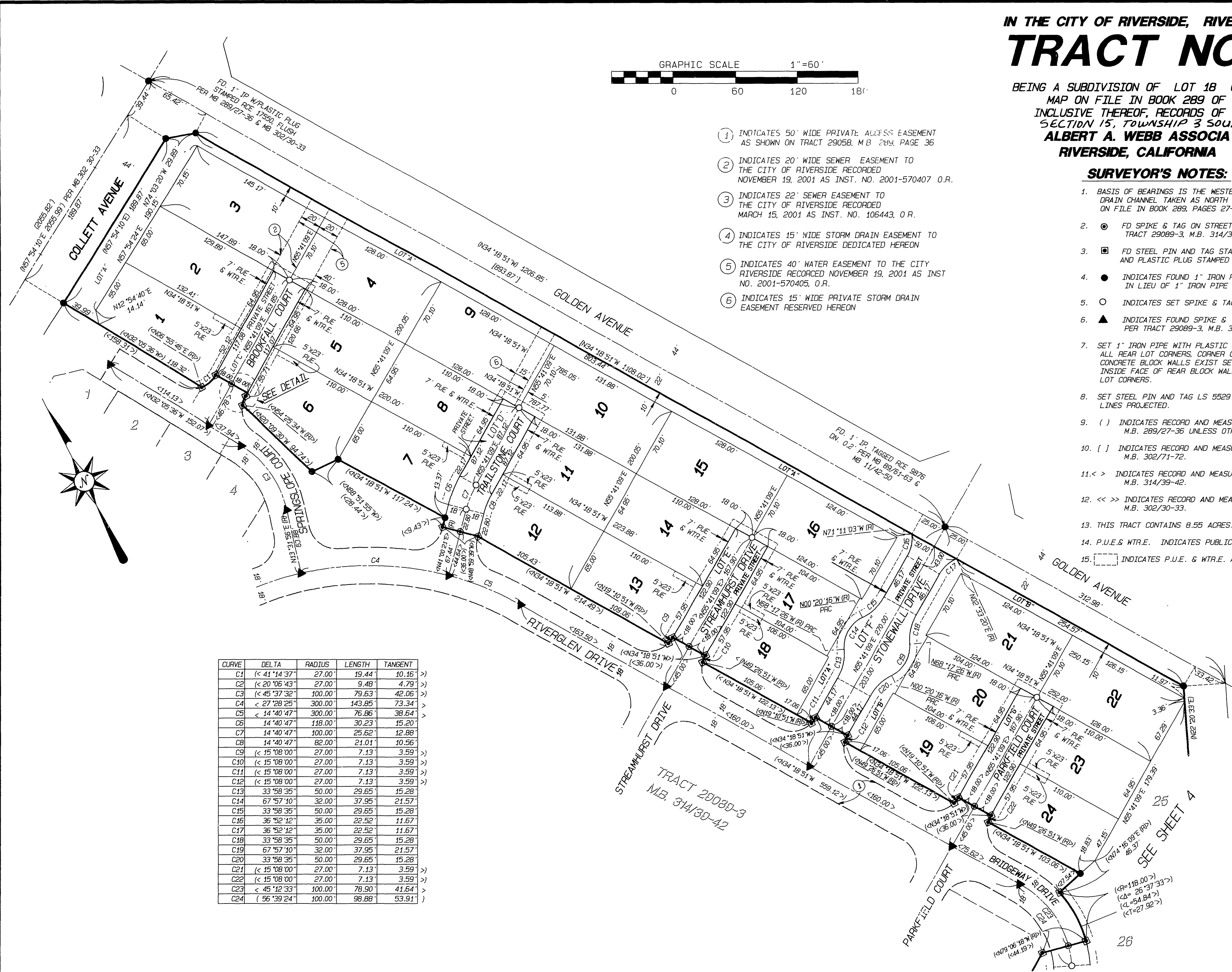
ALBERT A. WEBB ASSOCIATES - CIVIL ENGINEERS
RIVERSIDE, CALIFORNIA APRIL, 2002



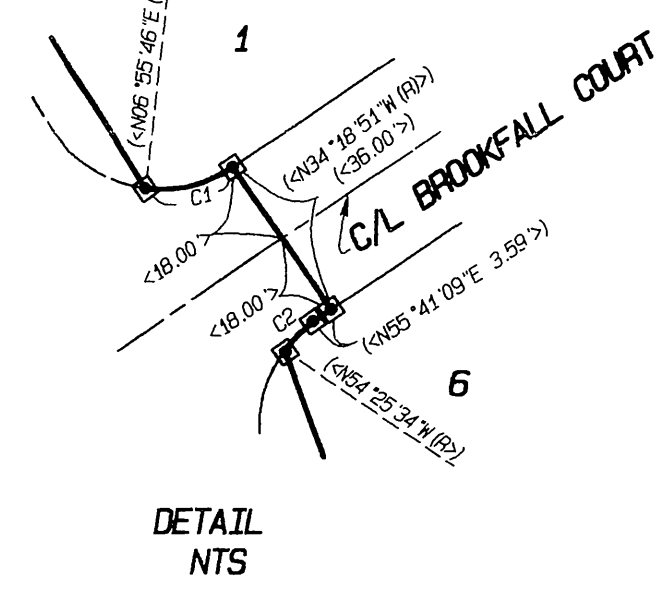
- ① INDICATES 50' WIDE PRIVATE ACCESS EASEMENT AS SHOWN ON TRACT 29058, M.B. 289, PAGE 36
- ② INDICATES 20' WIDE SEWER EASEMENT TO THE CITY OF RIVERSIDE RECORDED NOVEMBER 19, 2001 AS INST. NO. 2001-570407 O.R.
- ③ INDICATES 22' SEWER EASEMENT TO THE CITY OF RIVERSIDE RECORDED MARCH 15, 2001 AS INST. NO. 106443, O.R.
- ④ INDICATES 15' WIDE STORM DRAIN EASEMENT TO THE CITY OF RIVERSIDE DEDICATED HEREON
- ⑤ INDICATES 40' WATER EASEMENT TO THE CITY OF RIVERSIDE RECORDED NOVEMBER 19, 2001 AS INST. NO. 2001-570405, O.R.
- ⑥ INDICATES 15' WIDE PRIVATE STORM DRAIN EASEMENT RESERVED HEREON

SURVEYOR'S NOTES:

1. BASIS OF BEARINGS IS THE WESTERLY RIGHT OF WAY LINE OF LA SIERRA STORM DRAIN CHANNEL TAKEN AS NORTH 22° 20' 33" EAST PER TRACT NO. 29058 ON FILE IN BOOK 289, PAGES 27-36, RECORDS OF RIVERSIDE COUNTY, CALIFORNIA.
2. ● FD SPIKE & TAG ON STREET CENTERLINE, STAMPED LS 5529, FLUSH, PER TRACT 29089-3, M.B. 314/39-42.
3. ■ FD STEEL PIN AND TAG STAMPED, L.S. 5529, IN TOP OF CURB, IN LIEU OF 1" IRON PIPE AND PLASTIC PLUG STAMPED RCE 17550 PER TRACT 29058.
4. ● INDICATES FOUND 1" IRON PIPE W/PLASTIC PLUG STAMPED, L.S. 5529, FLUSH, IN LIEU OF 1" IRON PIPE AND PLASTIC PLUG STAMPED RCE 17550 PER TRACT 29058.
5. ○ INDICATES SET SPIKE & TAG ON STREET CENTERLINES, STAMPED LS 5529
6. ▲ INDICATES FOUND SPIKE & TAG ON STREET CENTERLINES, STAMPED LS 5529, PER TRACT 29089-3, M.B. 314/39-42.
7. SET 1" IRON PIPE WITH PLASTIC PLUG STAMPED LS 5529, FLUSH AT ALL REAR LOT CORNERS, CORNER CUT BACKS AND ANGLE POINTS. WHERE CONCRETE BLOCK WALLS EXIST SET NAIL AND TAG LS 5529 UP 12" ON INSIDE FACE OF REAR BLOCK WALL IN LIEU OF 1" IRON PIPE AT REAR LOT CORNERS.
8. SET STEEL PIN AND TAG LS 5529 IN TOP OF CURB AT ALL SIDE LOT LINES PROJECTED.
9. () INDICATES RECORD AND MEASURED DATA (R & M) PER TRACT 29058, M.B. 289/27-36 UNLESS OTHERWISE NOTED.
10. [] INDICATES RECORD AND MEASURED DATA (R & M) PER TRACT 29089-6, M.B. 302/71-72.
11. < > INDICATES RECORD AND MEASURED DATA (R & M) PER TRACT 29089-3, M.B. 314/39-42.
12. << >> INDICATES RECORD AND MEASURED DATA (R&M) PER TRACT 29089-1, M.B. 302/30-33.
13. THIS TRACT CONTAINS 8.55 ACRES.
14. P.U.E. & WTR.E. INDICATES PUBLIC ELECTRIC AND WATERLINE EASEMENT
15. [] INDICATES P.U.E. & WTR.E. AS SHOWN



CURVE	DELTA	RADIUS	LENGTH	TANGENT
C1	< 41° 14' 37"	27.00'	19.44'	10.16' >
C2	< 20° 06' 43"	27.00'	9.48'	4.79' >
C3	< 45° 37' 32"	100.00'	79.63'	42.06' >
C4	< 27° 28' 25"	300.00'	143.85'	73.34' >
C5	< 14° 40' 47"	300.00'	76.86'	38.64' >
C6	< 14° 40' 47"	118.00'	30.23'	15.20' >
C7	< 14° 40' 47"	100.00'	25.62'	12.88' >
C8	< 14° 40' 47"	82.00'	21.01'	10.56' >
C9	< 15° 08' 00"	27.00'	7.13'	3.59' >
C10	< 15° 08' 00"	27.00'	7.13'	3.59' >
C11	< 15° 08' 00"	27.00'	7.13'	3.59' >
C12	< 15° 08' 00"	27.00'	7.13'	3.59' >
C13	< 33° 58' 35"	50.00'	29.65'	15.28' >
C14	< 67° 57' 10"	32.00'	37.95'	21.57' >
C15	< 33° 58' 35"	50.00'	29.65'	15.28' >
C16	< 36° 52' 12"	35.00'	22.52'	11.67' >
C17	< 36° 52' 12"	35.00'	22.52'	11.67' >
C18	< 33° 58' 35"	50.00'	29.65'	15.28' >
C19	< 67° 57' 10"	32.00'	37.95'	21.57' >
C20	< 33° 58' 35"	50.00'	29.65'	15.28' >
C21	< 15° 08' 00"	27.00'	7.13'	3.59' >
C22	< 15° 08' 00"	27.00'	7.13'	3.59' >
C23	< 45° 12' 33"	100.00'	76.90'	41.64' >
C24	< 56° 39' 24"	100.00'	98.88'	53.91' >



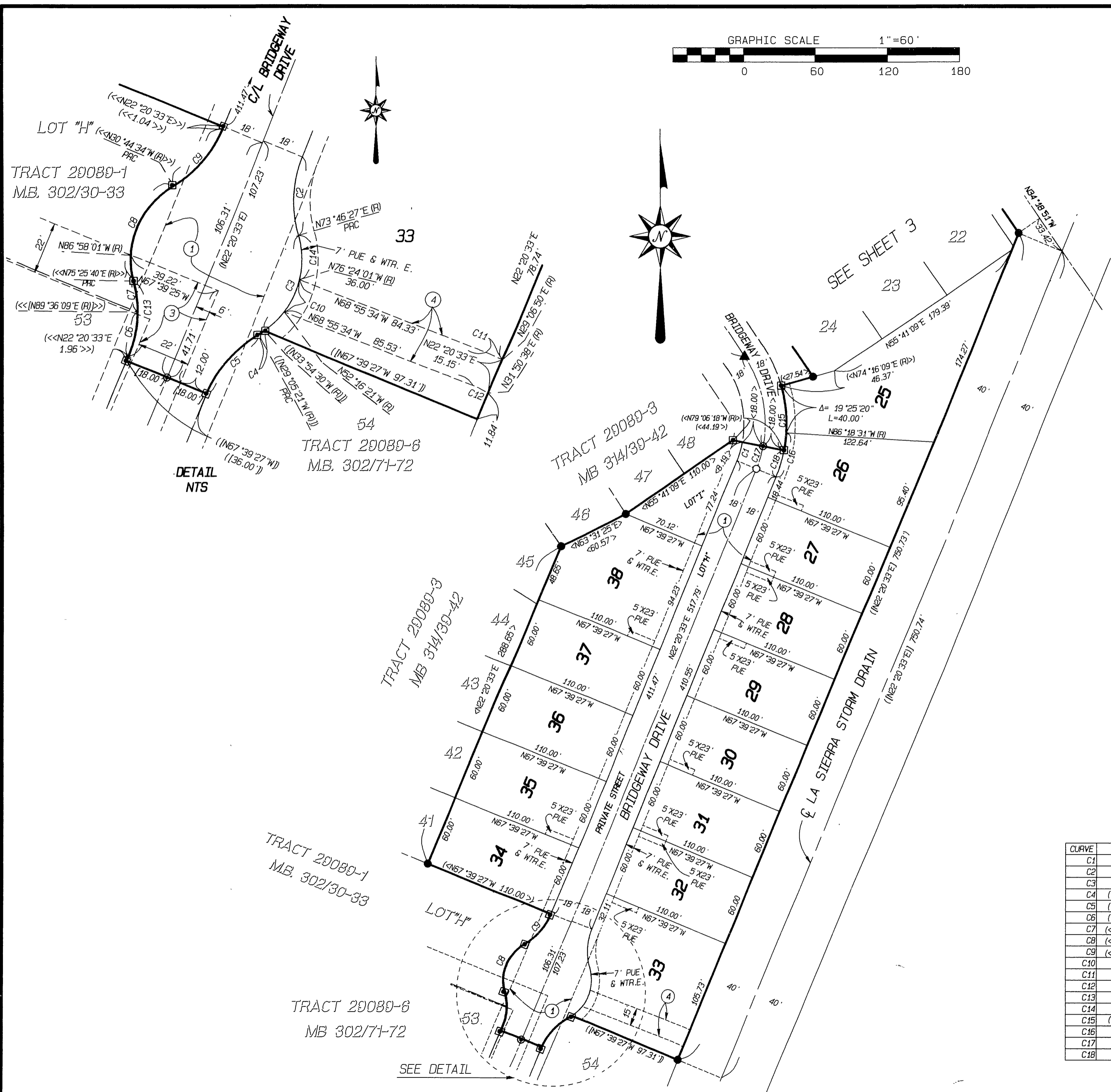
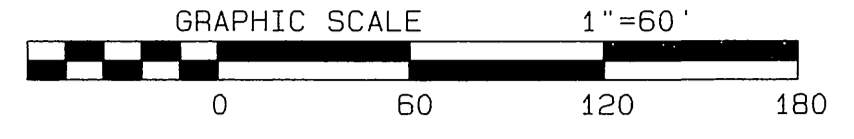
M.B. 324 / 101

PREPARED BY: _____ CHECKED BY: _____ G:\1999\199-0205\199-0205_FM.plt\PROJ_10.18AM (DWG/00.VPR)

IN THE CITY OF RIVERSIDE, RIVERSIDE COUNTY, CALIFORNIA

TRACT NO. 29089

BEING A SUBDIVISION OF LOT 18 OF TRACT NO. 29058 AS SHOWN BY MAP ON FILE IN BOOK 289 OF MAPS, PAGES 27 THROUGH 36 INCLUSIVE THEREOF, RECORDS OF RIVERSIDE COUNTY, CALIFORNIA, IN SECTION 15, TOWNSHIP 3 SOUTH, RANGE 6 WEST, S.B.M. ALBERT A. WEBB ASSOCIATES - CIVIL ENGINEERS RIVERSIDE, CALIFORNIA APRIL, 2002



SURVEYOR'S NOTES:

1. BASIS OF BEARINGS IS THE WESTERLY RIGHT OF WAY LINE OF LA SIERRA STORM DRAIN CHANNEL TAKEN AS NORTH 22° 20' 33" EAST PER TRACT NO. 29058 ON FILE IN BOOK 289, PAGES 27-36, RECORDS OF RIVERSIDE COUNTY, CALIFORNIA.
2. (●) FD SPIKE & TAG ON STREET CENTERLINE, STAMPED LS 5529, FLUSH, PER TRACT 29089-3, M.B. 314/39-42.
3. (■) FD STEEL PIN AND TAG STAMPED, L.S. 5529, IN TOP OF CURB, IN LIEU OF 1" IRON PIPE AND PLASTIC PLUG STAMPED RCE 17550 PER TRACT 29058.
4. (●) INDICATES FOUND 1" IRON PIPE W/PLASTIC PLUG STAMPED, L.S. 5529, FLUSH, IN LIEU OF 1" IRON PIPE AND PLASTIC PLUG STAMPED RCE 17550 PER TRACT 29058.
5. (○) INDICATES SET SPIKE & TAG ON STREET CENTERLINES, STAMPED LS 5529
6. (▲) INDICATES FOUND SPIKE & TAG ON STREET CENTERLINES, STAMPED LS 5529, PER TRACT 29089-3, M.B. 314/39-42.
7. SET 1" IRON PIPE WITH PLASTIC PLUG STAMPED LS 5529, FLUSH AT ALL REAR LOT CORNERS, CORNER CUT BACKS AND ANGLE POINTS. WHERE CONCRETE BLOCK WALLS EXIST SET NAIL AND TAG LS 5529 UP 12" ON INSIDE FACE OF REAR BLOCK WALL IN LIEU OF 1" IRON PIPE AT REAR LOT CORNERS.
8. SET STEEL PIN AND TAG LS 5529 IN TOP OF CURB AT ALL SIDE LOT LINES PROJECTED.
9. () INDICATES RECORD AND MEASURED DATA (R & M) PER TRACT 29058, M.B. 289/27-36 UNLESS OTHERWISE NOTED.
10. [] INDICATES RECORD AND MEASURED DATA (R & M) PER TRACT 29089-6, M.B. 302/71-72.
11. < > INDICATES RECORD AND MEASURED DATA (R & M) PER TRACT 29089-3, M.B. 314/39-42.
12. << >> INDICATES RECORD AND MEASURED DATA (R&M) PER TRACT 29089-1, M.B. 302/30-33.
13. THIS TRACT CONTAINS 8.55 ACRES.
14. P.U.E. & WTR.E. INDICATES PUBLIC ELECTRIC AND WATERLINE EASEMENT
15. (---) INDICATES P.U.E. & WTR.E. AS SHOWN

- ① INDICATES 50' WIDE PRIVATE ACCESS EASEMENT AS SHOWN ON TRACT 29058, M.B. 289, PAGE 36
- ② INDICATES 20' WIDE SEWER EASEMENT TO THE CITY OF RIVERSIDE RECORDED NOVEMBER 19, 2001 AS INST. NO. 2001-570407, O.R.
- ③ INDICATES 22' SEWER EASEMENT TO THE CITY OF RIVERSIDE RECORDED MARCH 15, 2001 AS INST. NO. 106443, O.R.
- ④ INDICATES 15' WIDE STORM DRAIN EASEMENT TO THE CITY OF RIVERSIDE DEDICATED HEREON
- ⑤ INDICATES 40' WATER EASEMENT TO THE CITY RIVERSIDE RECORDED NOVEMBER 19, 2001 AS INST. NO. 2001-570405, O.R.
- ⑥ INDICATES 15' WIDE PRIVATE STORM DRAIN EASEMENT RESERVED HEREON

CURVE	DELTA	RADIUS	LENGTH	TANGENT
C1	11°26'51"	82.00'	16.38'	8.22'
C2	38°34'06"	50.00'	33.66'	17.49'
C3	72°19'03"	36.00'	45.44'	26.31'
C4	(4°49'10"	36.00'	3.03'	1.51')
C5	(38°34'06"	50.00'	33.66'	17.49')
C6	(21°56'42"	50.00'	19.15'	9.69')
C7	<< 14°58'11"	50.00'	13.06'	6.57' >>
C8	<< 73°49'46"	36.00'	46.39'	27.04' >>
C9	<< 36°54'53"	50.00'	32.21'	16.69' >>
C10	24°07'41"	36.00'	15.16'	7.69'
C11	8°02'24"	52.50'	7.37'	3.69'
C12	10°46'12"	37.50'	7.05'	3.53'
C13	36°54'53"	50.00'	32.21'	16.69'
C14	29°49'32"	36.00'	18.74'	9.59'
C15	< 26°37'33"	118.00'	54.84'	27.92' >
C16	18°39'04"	118.00'	38.41'	19.38'
C17	11°26'51"	100.00'	19.98'	10.02'
C18	11°26'51"	118.00'	23.58'	11.83'