

IN THE CITY OF RIVERSIDE, COUNTY OF RIVERSIDE, STATE OF CALIFORNIA

# TRACT NO. 32205

BEING A SUBDIVISION OF THE WEST HALF OF THE WEST HALF OF THE SOUTHEAST QUARTER OF SECTION 13, TOWNSHIP 3 SOUTH, RANGE 5 WEST, SAN BERNARDINO MERIDIAN, ACCORDING TO THE OFFICIAL PLAT THEREOF

MAYERS & ASSOCIATES CIVIL ENGINEERING, INC. JANUARY, 2005  
LAKE FOREST, CA

### OWNER'S STATEMENT

WE HEREBY STATE THAT WE ARE THE OWNERS OF, OR HAVE SOME RIGHT, TITLE OR INTEREST IN THE LAND INCLUDED WITHIN THE SUBDIVISION AS SHOWN ON THE ANNEXED MAP, THAT WE ARE THE ONLY PERSONS WHOSE CONSENT IS NECESSARY TO PASS CLEAR TITLE TO SAID LAND, AND WE CONSENT TO THE PREPARATION AND RECORDATION OF THIS SUBDIVISION MAP AS SHOWN WITHIN THE DISTINCTIVE BORDER LINE

WE HEREBY DEDICATE TO PUBLIC USE FOR PUBLIC STREET AND PUBLIC UTILITY PURPOSES, LOTS "A" AND "B"

WE HEREBY DEDICATE TO THE CITY OF RIVERSIDE AS EASEMENTS FOR CONSTRUCTION AND MAINTENANCE OF STORM DRAIN FACILITIES, THE EASEMENTS DESIGNATED AS "PUBLIC S D E"

WE HEREBY DEDICATE TO THE CITY OF RIVERSIDE AS AN EASEMENT FOR THE CONSTRUCTION AND MAINTENANCE OF WATER FACILITIES THE EASEMENT DESIGNATED AS "20 WATERLINE EASEMENT"

WE HEREBY DEDICATE TO THE CITY OF RIVERSIDE FOR NON-MOTORIZED MULTI-PURPOSE RECREATIONAL TRAIL PURPOSES, THE EASEMENT DESIGNATED AS "RECREATIONAL TRAIL EASEMENT"

WE HEREBY DEDICATE TO THE CITY OF RIVERSIDE FOR PUBLIC PURPOSES, TO PRESERVE AND MAINTAIN SAID LAND IN ITS NATURAL CONDITION, TO BE KEPT FREE OF BUILDINGS, STRUCTURES, MATERIALS, FENCING, EQUIPMENT, AND EARTH-FILL, OR DEPOSIT, THE EASEMENTS DESIGNATED OPEN SPACE EASEMENT SUCH OPEN SPACE EASEMENTS DO NOT INCLUDE ANY RIGHT OF ACCESS AND THE CITY OF RIVERSIDE SHALL NOT HAVE ANY RESPONSIBILITY FOR MAINTENANCE THEREOF

WE HEREBY RESERVE TO OURSELVES, OUR HEIRS, SUCCESSORS AND ASSIGNS, LOTS "C" AND "D" FOR OPEN SPACE PURPOSES

WE HEREBY RETAIN THE EASEMENT INDICATED AS PRIVATE S.D.E AND THE EASEMENT INDICATED AS ACCESS EASEMENTS FOR PRIVATE USE FOR THE SOLE BENEFIT OF OURSELVES, OUR SUCCESSORS AND ASSIGNEES

WE HEREBY RESERVE THE EASEMENT INDICATED AS PRIVATE DRIVEWAY ACCESS FOR THE SOLE BENEFIT OF OURSELVES, OUR SUCCESSORS AND ASSIGNEES

EMPIRE HOMES RIVERSIDE 72 LP

BY EMPIRE HOMES, INC. ITS GENERAL PARTNER

BY Russell G. Van Cleve PRESIDENT  
BY Chris Taylor ASSISTANT SECRETARY

### NOTARY ACKNOWLEDGMENT

STATE OF CALIFORNIA )  
COUNTY OF ORANGE )

ON July 15<sup>th</sup>, 2005 BEFORE ME, Katherine A. Romero A NOTARY PUBLIC, PERSONALLY

APPEARED Russell G. Van Cleve, PERSONALLY KNOWN TO ME OR PROVED TO ME ON THE BASIS OF SATISFACTORY EVIDENCE TO BE PERSON WHOSE NAME IS/ARE SUBSCRIBED TO THE WITHIN INSTRUMENT AND ACKNOWLEDGED TO ME THAT HE/SHE/IT/ THEY EXECUTED THE SAME IN HIS/HER/ITS/ THEIR AUTHORIZED CAPACITY(IES), AND THAT BY HIS/HER/IT/ THEIR SIGNATURE(S) ON THE INSTRUMENT THE PERSON(S) OR THE ENTITY UPON BEHALF OF WHICH THE PERSON(S) ACTED, EXECUTED THE INSTRUMENT

WITNESS MY HAND

Katherine A. Romero SIGNATURE  
Katherine A. Romero PRINT NAME

MY PRINCIPAL PLACE OF BUSINESS IS IN Orange COUNTY

MY COMMISSION EXPIRES Sept 27, 2006 Commission # 1376988

### NOTARY ACKNOWLEDGMENT

STATE OF CALIFORNIA )  
COUNTY OF Orange )

ON July 15<sup>th</sup>, 2005 BEFORE ME, Katherine A. Romero A NOTARY PUBLIC, PERSONALLY

APPEARED Chris Taylor, PERSONALLY KNOWN TO ME OR PROVED TO ME ON THE BASIS OF SATISFACTORY EVIDENCE TO BE PERSON WHOSE NAME IS/ARE SUBSCRIBED TO THE WITHIN INSTRUMENT AND ACKNOWLEDGED TO ME THAT HE/SHE/IT/ THEY EXECUTED THE SAME IN HIS/HER/ITS/ THEIR AUTHORIZED CAPACITY(IES), AND THAT BY HIS/HER/IT/ THEIR SIGNATURE(S) ON THE INSTRUMENT THE PERSON(S) OR THE ENTITY UPON BEHALF OF WHICH THE PERSON(S) ACTED, EXECUTED THE INSTRUMENT

WITNESS MY HAND

Katherine A. Romero SIGNATURE  
Katherine A. Romero PRINT NAME

MY PRINCIPAL PLACE OF BUSINESS IS IN Orange COUNTY

MY COMMISSION EXPIRES Sept 27, 2006 Commission # 1376988

### UTILITY EASEMENT STATEMENT

THE CITY OF RIVERSIDE BEING THE RECORD OWNER OF THE FOLLOWING DESCRIBED EASEMENTS HEREBY CONSENTS TO THE MAKING AND FILING OF THE ANNEXED MAP

1. A RIGHT OF WAY RESERVED TO RIVERSIDE WATER COMPANY AND ITS ASSIGNS, FOR THE CONSTRUCTION AND MAINTENANCE OF ALL NECESSARY WATER DITCHES, PIPES, FLUMES AND APPARATUS FOR THE PURPOSE OF IRRIGATION AND DOMESTIC USE, RECORDED AUGUST 14, 1885 IN BOOK 42, PAGE 294 AND 296 OF DEEDS, RECORDS OF SAN BERNARDINO COUNTY, CALIFORNIA

THE EXACT LOCATION OF SAID RIGHT OF WAY IS NOT DISCLOSED BY RECORD, AND THEREFORE, IS NOT PLOTTABLE HEREON

DATED JULY 20, 2005

DAVID H. WRIGHT  
PUBLIC UTILITIES DIRECTOR

BY Dieter P. Witzfeld  
MM JC

### TAX COLLECTOR'S STATEMENT

I HEREBY STATE THAT ACCORDING TO THE RECORDS OF THIS OFFICE, AS OF THIS DATE, THERE ARE NO LIENS AGAINST THE PROPERTY SHOWN ON THE WITHIN MAP FOR UNPAID STATE, COUNTY, MUNICIPAL OR LOCAL TAXES OR SPECIAL ASSESSMENTS COLLECTED AS TAXES, EXCEPT TAXES OR SPECIAL ASSESSMENTS COLLECTED AS TAXES NOW A LIEN BUT NOT YET PAYABLE, WHICH ARE ESTIMATED TO BE \$ 900

DATED Aug 12, 2005

PAUL MCDONNELL, COUNTY TAX COLLECTOR

BY Sernice Donald

### TAX BOND STATEMENT

I HEREBY STATE THAT A BOND IN THE SUM OF \$ 900 HAS BEEN EXECUTED AND FILED WITH THE BOARD OF SUPERVISORS OF THE COUNTY OF RIVERSIDE, CALIFORNIA, CONDITIONED UPON THE PAYMENT OF ALL TAXES, STATE, COUNTY, MUNICIPAL OR LOCAL AND ALL SPECIAL ASSESSMENTS COLLECTED AS TAXES, WHICH AT THE TIME OF THE FILING OF THIS MAP WITH THE COUNTY RECORDER, ARE A LIEN AGAINST SAID PROPERTY BUT NOT YET PAYABLE, AND SAID BOND HAS BEEN DULY APPROVED BY THE BOARD OF SUPERVISORS

DATED Aug 12, 2005

NANCY ROMERO  
CLERK OF THE BOARD OF SUPERVISORS

CASH TAX BOND  
PAUL MCDONNELL  
COUNTY TAX COLLECTOR

BY \_\_\_\_\_ BY Sernice Donald

### CITY TREASURER'S CERTIFICATE

I HEREBY CERTIFY THAT ACCORDING TO THE RECORDS OF THIS OFFICE, AS OF THIS DATE, THE REAL PROPERTY SHOWN ON THIS MAP IS NOT SUBJECT TO ANY SPECIAL ASSESSMENTS, BONDS AND/OR LIENS WHICH HAVE NOT BEEN PAID IN FULL. THIS CERTIFICATE DOES NOT INCLUDE ANY SPECIAL ASSESSMENTS, THE BONDS OF WHICH HAVE NOT BECOME A LIEN ON SAID PROPERTY

DATED 7/27, 2005

PAUL C. SUNDEEN, CHIEF FINANCIAL OFFICER/ TREASURER

BY Bret A. Mean

### SIGNATURE OMISSIONS

THE SIGNATURES OF THE FOLLOWING PARTIES HAVE BEEN OMITTED UNDER THE PROVISIONS OF SECTION 66436, OF THE SUBDIVISION MAP ACT OF THE STATE OF CALIFORNIA, SINCE THEIR INTEREST IS SUCH THAT IT CANNOT RIPEN INTO A FEE

MARCH INLAND AIRPORT AUTHORITY, A CALIFORNIA AIRPORT AUTHORITY, HOLDER OF AN EASEMENT FOR THE PASSAGE OF AIRCRAFT, MILITARY AND CIVILIAN, AND INCIDENTAL PURPOSES, RECORDED APRIL 28, 2005 AS DOCUMENT NO 2005-0337032, OF OFFICIAL RECORDS OF RIVERSIDE COUNTY

SOUTHERN CALIFORNIA GAS COMPANY, HOLDER OF AN EASEMENT FOR PIPE LINES PURPOSES, RECORDED FEBRUARY 14, 1948, BOOK 893, PAGE 234, AND MARCH 14, 1951, BOOK 1252, PAGE 506, BOTH OF OFFICIAL RECORDS

FOUR CORNERS PIPE LINE COMPANY, A DELAWARE CORPORATION, HOLDER OF AN EASEMENT FOR PIPE LINES PURPOSES, RECORDED DECEMBER 9, 1957, INSTRUMENT NO 87004, BOOK 2189, PAGE 304, OF OFFICIAL RECORDS

### CITY SURVEYOR'S CERTIFICATE

I HEREBY CERTIFY THAT I HAVE EXAMINED THIS MAP, AND THAT I AM SATISFIED THAT THE MAP IS TECHNICALLY CORRECT, AND THAT ALL MONUMENTS HAVE BEEN SET OR A CASH DEPOSIT SUFFICIENT TO COVER THEIR PLACEMENT HAS BEEN DEPOSITED WITH THE CITY OF RIVERSIDE

DATED 7/27/05, 2005

MARK S. BROWN  
L S 5655 LIC EXP 9/30/05  
CITY SURVEYOR

BY MSB

### SOILS REPORT

A SOILS REPORT WAS PREPARED FOR THIS SUBDIVISION ON THE 26TH DAY OF MARCH 2004 BY GEOSOILS, INC., AS REQUIRED BY THE HEALTH AND SAFETY CODE OF THE STATE OF CALIFORNIA, SECTION 17953

### PUBLIC UTILITIES CERTIFICATE

I HEREBY CERTIFY THAT THE SUBDIVIDER NAMED ON THIS MAP HAS DEPOSITED WITH THE CITY OF RIVERSIDE PUBLIC UTILITIES DEPARTMENT SUFFICIENT FUNDS OR MADE THE REQUIRED ARRANGEMENTS AND PROVISIONS FOR THE INSTALLATION OF WATER AND ELECTRIC FACILITIES NECESSARY TO PROVIDE SERVICE TO ALL LOTS AS SHOWN ON THIS MAP, AND THAT ALL PUBLIC UTILITY EASEMENTS SHOWN ARE SUFFICIENT FOR ALL REQUIREMENTS OF THE WATER AND ELECTRIC DIVISIONS OF THE CITY OF PUBLIC UTILITIES DEPARTMENT OF THE CITY OF RIVERSIDE

DATED JULY 20, 2005

DAVID H. WRIGHT  
PUBLIC UTILITIES DIRECTOR

BY Dieter P. Witzfeld  
MM JC

### RECORDER'S STATEMENT

FILED THIS 16 DAY OF August 2005, AT 8 (AM) PM

IN BOOK 387 OF MAPS, AT PAGES 43-45, AT THE REQUEST OF CITY CLERK OF RIVERSIDE, CALIFORNIA

NO 2005-0668977

FEE \$ 11-

LARRY W. WARD, COUNTY ASSESSOR-CLERK-RECORDER

BY: [Signature], DEPUTY

SUBDIVISION GUARANTEE: FIDELITY NATIONAL TITLE COMPANY

### SURVEYOR'S STATEMENT

THIS MAP WAS PREPARED BY ME OR UNDER MY DIRECTION AND IS BASED UPON A FIELD SURVEY IN CONFORMANCE WITH THE REQUIREMENTS OF THE SUBDIVISION MAP ACT AND LOCAL ORDINANCE AT THE REQUEST OF EMPIRE HOMES INC RIVERSIDE 72 LP, IN NOVEMBER 2004. I HEREBY STATE THAT THIS FINAL MAP SUBSTANTIALLY CONFORMS TO THE CONDITIONALLY APPROVED TENTATIVE MAP THAT ALL MONUMENTS ARE OF THE CHARACTER AND OCCUPY THE POSITIONS INDICATED, OR THAT THEY WILL BE SET IN THOSE POSITIONS WITHIN ONE YEAR FROM THE RECORDATION DATE OF THIS MAP. THE MONUMENTS ARE OR WILL BE SUFFICIENT TO ENABLE THE SURVEY TO BE RETRACED. THE SURVEY IS TRUE AND COMPLETE AS SHOWN

Brian K Mickelson

DATED July 13, 2005

BRIAN K MICKELSON  
PROFESSIONAL LAND SURVEYOR NO 7320  
EXPIRES 6/30/07



### CITY ENGINEER'S CERTIFICATE

I HEREBY CERTIFY THAT I HAVE EXAMINED THIS MAP, THAT THE SUBDIVISION AS SHOWN HEREON IS SUBSTANTIALLY THE SAME AS IT APPEARS ON THE TENTATIVE MAP OF TRACT NO. 32205, WHICH WAS APPROVED BY THE CITY OF RIVERSIDE PLANNING COMMISSION ON OCTOBER 21, 2004 AND ANY APPROVED ALTERATIONS THEREOF, THAT ALL PROVISIONS OF THE SUBDIVISION MAP ACT (DIVISION 2 OF TITLE 7 OF THE CALIFORNIA GOVERNMENT CODE) AND TITLE 18 OF THE RIVERSIDE MUNICIPAL CODE APPLICABLE AT THE TIME OF THE APPROVAL OF THE TENTATIVE MAP HAVE BEEN COMPLIED WITH, THAT THE EASEMENTS FOR SEWER AND DRAINAGE FACILITIES AS SHOWN ON THE MAP HAVE BEEN APPROVED, THAT THE PLANS FOR DRAINS, DRAINAGE WORKS, AND SEWERS SUFFICIENT TO MITIGATE FLOOD DAMAGE TO ALL LOTS IN THE SUBDIVISION HAVE BEEN APPROVED, THAT A COMPLETE SET OF PLANS COVERING ALL IMPROVEMENTS HAS BEEN FILED WITH THE PUBLIC WORKS DEPARTMENT AND THAT THE SAME HAVE BEEN CHECKED AND APPROVED, AND THAT ALL IMPROVEMENTS HAVE BEEN COMPLETED IN ACCORDANCE WITH THE APPROVED PLANS OR THAT THE SUBDIVIDER HAS ENTERED INTO AN AGREEMENT WITH THE CITY OF RIVERSIDE COVERING COMPLETION OF ALL IMPROVEMENTS AND SPECIFYING THE TIME FOR COMPLETING THE SAME

DATED July 27, 2005

THOMAS J. BOYD  
R.C.E. 36170 LIC EXP 6/30/06  
CITY ENGINEER

BY Thomas Boyd

### CITY CLERK'S CERTIFICATE

RESOLVED: THAT THIS MAP, CONSISTING OF THREE (3) SHEETS, BE, AND THE SAME IS HEREBY ACCEPTED AS THE FINAL MAP OF TRACT NO. 32205

LOTS "A" AND "B" ARE HEREBY ACCEPTED FOR PUBLIC STREET AND PUBLIC UTILITY PURPOSES

THE EASEMENTS DESIGNATED AS "OPEN SPACE EASEMENT" ARE HEREBY ACCEPTED FOR OPEN SPACE PURPOSES

EASEMENTS DESIGNATED AS PUBLIC S D E ARE HEREBY ACCEPTED FOR THE CONSTRUCTION AND MAINTENANCE OF STORM DRAIN FACILITIES.

THE EASEMENT DESIGNATED AS 20' WATERLINE EASEMENT IS HEREBY ACCEPTED AS AN EASEMENT FOR THE CONSTRUCTION AND MAINTENANCE OF WATER FACILITIES

THE EASEMENT DESIGNATED AS "RECREATIONAL TRAIL EASEMENT" IS HEREBY ACCEPTED FOR NON-MOTORIZED MULTI-PURPOSE RECREATIONAL TRAIL PURPOSES

THE CITY CLERK IS HEREBY AUTHORIZED AND DIRECTED TO ATTEST SAID MAP BY SIGNING HER NAME THERETO AS CITY CLERK OF THE CITY OF RIVERSIDE, STATE OF CALIFORNIA

I HEREBY CERTIFY THAT THE FORGOING RESOLUTION WAS ACCEPTED BY THE MAYOR AND COUNCIL OF THE CITY OF RIVERSIDE THIS 9th DAY OF August, 2005

COLLEEN J. NICOL  
CITY CLERK OF THE CITY OF RIVERSIDE, CALIFORNIA

BY Colleen Nicol

city

387/44

M.B. 387/44

**SURVEYOR'S NOTES**

BASIS OF BEARINGS FOR THIS MAP IS THE LINE COMMON TO SECTION 13 AND SECTION 24, TOWNSHIP 3 SOUTH, RANGE 5 WEST, SAN BERNARDINO MERIDIAN, BETWEEN THE ONE QUARTER CORNER COMMON TO SAID SECTIONS 13 AND 24 AND THE SECTION CORNER COMMON TO SECTIONS 13, 14, 23 AND 24 OF SAID TOWNSHIP AND RANGE, AS SHOWN ON A RECORD OF SURVEY FILED OCTOBER 3, 2000 IN BOOK 109, PAGES 18 AND 19 OF RECORDS OF SURVEYS, RECORDS OF RIVERSIDE COUNTY, CALIFORNIA, BEING NORTH 89° 59' 53" EAST.

- INDICATES FOUND MONUMENT AS NOTED BELOW
  - INDICATES SEARCHED AND FOUND NOTHING. A 1-INCH IRON PIPE WITH PLASTIC CAP, OR A SPIKE AND WASHER, OR A LEAD PLUG WITH TAG MARKED "LS 7320" SET FLUSH, UNLESS OTHERWISE NOTED.
  - ▲ INDICATES SET SPIKE AND WASHER FLUSH TAGGED LS 7320, UNLESS OTHERWISE NOTED.
  - FOUND SPIKE AND WASHER TAGGED LS 7320 PER THE MAP OF TRACT NO. 28907-1 M B 338/26-32
- THIS TRACT CONTAINS 40.495 ACRES

IN THE CITY OF RIVERSIDE, COUNTY OF RIVERSIDE, STATE OF CALIFORNIA

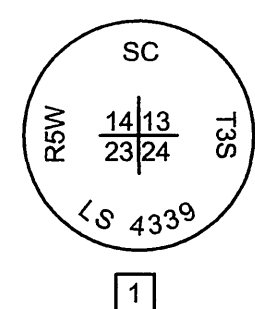
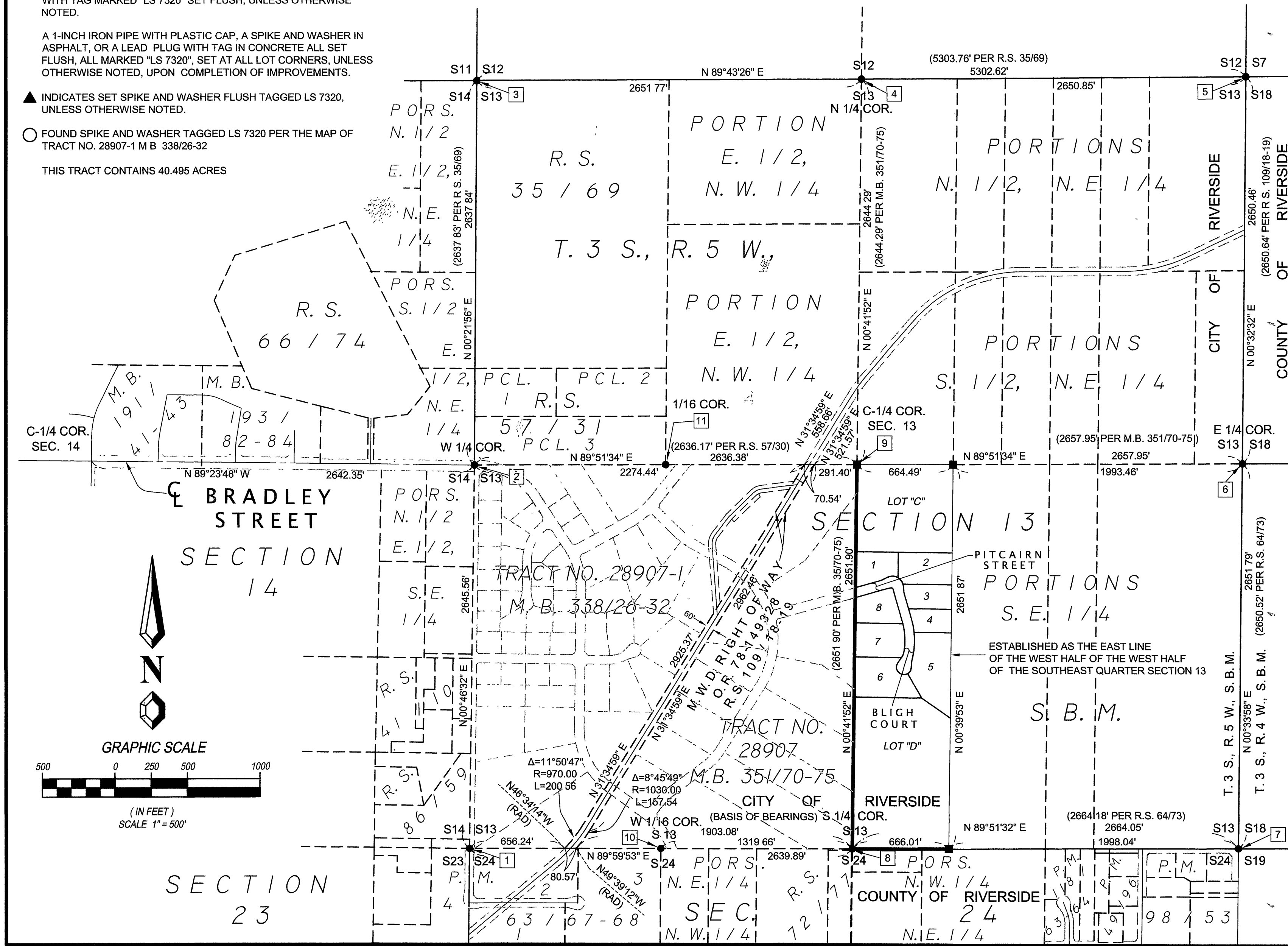
**TRACT NO. 32205**

BEING A SUBDIVISION OF THE WEST HALF OF THE WEST HALF OF THE SOUTHEAST QUARTER OF SECTION 13, TOWNSHIP 3 SOUTH, RANGE 5 WEST, SAN BERNARDINO MERIDIAN, ACCORDING TO THE OFFICIAL PLAT THEREOF  
MAYERS & ASSOCIATES CIVIL ENGINEERING, INC. JANUARY, 2005  
LAKE FOREST, CA

**BOUNDARY AND SURVEYOR'S NOTES**  
**SEE SHEET 3 OF 3 FOR EASEMENT NOTES**

**MONUMENT NOTES**

- FOUND 2" IRON PIPE WITH 2" BRASS DISK, FLUSH, STAMPED AS SHOWN BELOW, PER R.S. 109/18-19, R.S. 56/59, R.S. 72/77, P.M. 63/67-68, R.S. 64/73 & TR NO 28907.
- FOUND 1" IRON PIPE WITH PLUG & TAG MARKED "L.S. 3018", UP 0.4' ACCEPTED AS THE 1/4 CORNER COMMON TO SECTIONS 13 & 14, PER R.S. 86/89, M.B. 193/82-84, M.B. 191/41-43 & TR. NO. 28907
- FOUND 2" IRON PIPE WITH CONCRETE PLUG & TAG MARKED "L.S. 3547", DOWN 0.3'. ACCEPTED AS THE SECTION CORNER COMMON TO SECTIONS 13, 14, 23 & 24, PER TR. NO. 28907
- FOUND 3/4" IRON PIPE WITH ILLEGIBLE TAG, UP 0.2'. ACCEPTED AS THE 1/4 CORNER COMMON TO SECTIONS 12 & 13, PER R.S. 35/69 & TR. NO. 28907 SET TAG L.S. 7320
- FOUND 2" IRON PIPE WITH 2" BRASS DISK, PARTIALLY ILLEGIBLE, UP 0.1', STAMPED AS SHOWN BELOW, PER R.S. 109/18-19 & TR. NO. 28907.
- FOUND 1" IRON PIPE WITH CONCRETE PLUG & TAG MARKED "R.C.E. 862", UP 0.1' ACCEPTED AS THE 1/4 CORNER COMMON TO SECTIONS 13 & 18, PER R.S. 109/18-19, R.S. 64/73 & TR. NO. 28907.
- FOUND 1-1/2" IRON PIPE WITH PLUG & ILLEGIBLE TAG, FLUSH. ACCEPTED AS THE SECTION CORNER COMMON TO SECTIONS 13, 18, 19 & 24, PER R.S. 72/77, P.M. 98/53, R.S. 64/73, P.M. 49/96, P.M. 24/60 & TR. NO. 28907 SET TAG L.S. 7320.
- FOUND 3/4" IRON PIPE WITH NO TAG, UP 0.5' ACCEPTED AS THE SOUTH 1/4 CORNER OF SECTION 13, PER R.S. 109/18-19, R.S. 72/77, R.S. 64/73, P.M. 49/96, P.M. 24/60 & TR. NO. 28907 SET TAG L.S. 7320.
- FOUND 1" IRON PIPE WITH PLUG & TAG MARKED "L.S. 7320", FLUSH", ACCEPTED AS THE CENTER OF SECTION 13, PER TR. NO. 28907
- FOUND 1" IRON PIPE WITH PLUG & TAG MARKED "R.C.E. 862", UP 0.8' ACCEPTED AS THE W 1/16 CORNER COMMON TO SECTIONS 13 & 24, PER P.M. 63/67-68 & TR. NO. 28907.
- FOUND NAIL & TAG IN BOULDER MARKED "L.S. 3051" ACCEPTED AS THE NORTH 1/16 CORNER OF THE SW 1/4 OF SECTION 13 PER TR. NO. 28907.



NOTE: TAG IS PARTIALLY ILLEGIBLE

M.B. 387/44

# TRACT NO. 32205

BEING A SUBDIVISION OF THE WEST HALF OF THE WEST HALF OF THE SOUTHEAST QUARTER OF SECTION 13, TOWNSHIP 3 SOUTH, RANGE 5 WEST, SAN BERNARDINO MERIDIAN, ACCORDING TO THE OFFICIAL PLAT THEREOF

MAYERS & ASSOCIATES CIVIL ENGINEERING, INC  
LAKE FOREST, CA

SEE SHEET 2 OF 3 FOR BOUNDARY

## SURVEYOR'S NOTES

BASIS OF BEARINGS FOR THIS MAP IS THE LINE COMMON TO SECTION 13 AND SECTION 24, TOWNSHIP 3 SOUTH, RANGE 5 WEST, SAN BERNARDINO MERIDIAN, BETWEEN THE ONE QUARTER CORNER COMMON TO SAID SECTIONS 13 AND 24 AND THE SECTION CORNER COMMON TO SECTIONS 13, 14, 23 AND 24 OF SAID TOWNSHIP AND RANGE, AS SHOWN ON A RECORD OF SURVEY FILED OCTOBER 3, 2000 IN BOOK 109, PAGES 18 AND 19 OF RECORDS OF SURVEYS, RECORDS OF RIVERSIDE COUNTY, CALIFORNIA, BEING NORTH 89° 59' 53" EAST

- INDICATES FOUND MONUMENT AS NOTED BELOW
  - INDICATES SEARCHED AND FOUND NOTHING A 1-INCH IRON PIPE WITH PLASTIC CAP, OR A SPIKE AND WASHER, OR A LEAD PLUG WITH TAG MARKED "LS 7320" SET FLUSH, UNLESS OTHERWISE NOTED
  - A 1-INCH IRON PIPE WITH PLASTIC CAP, A SPIKE AND WASHER IN ASPHALT, OR A LEAD PLUG WITH TAG IN CONCRETE ALL SET FLUSH, ALL MARKED "LS 7320", SET AT ALL LOT CORNERS, UNLESS OTHERWISE NOTED
  - ▲ INDICATES SET SPIKE AND WASHER FLUSH TAGGED LS 7320, UNLESS OTHERWISE NOTED
  - FOUND SPIKE AND WASHER TAGGED LS 7320 PER THE MAP OF TRACT NO. 28907-1 M.B. 338/26-32
- THIS TRACT CONTAINS 40.495 ACRES
- FOR MONUMENT NOTES, SEE SHEET 2

## EASEMENT NOTES

- 1 A RIGHT OF WAY RESERVED TO RIVERSIDE WATER COMPANY AND ITS ASSIGNS, FOR THE CONSTRUCTION AND MAINTENANCE OF ALL NECESSARY WATER DITCHES, PIPES, FLUMES AND APPARATUS FOR THE PURPOSE OF IRRIGATION AND DOMESTIC USE, RECORDED AUGUST 14, 1885 IN BOOK 42, PAGE 294 OF DEEDS, RECORDS OF SAN BERNARDINO COUNTY, CALIFORNIA
- THE EXACT LOCATION OF SAID RIGHT OF WAY IS NOT DISCLOSED BY RECORD, AND THEREFORE, IS NOT PLOTTABLE HEREON
- 2 INDICATES PRIVATE STORM DRAIN AND ACCESS EASEMENTS FOR STORM DRAIN AND ACCESS PURPOSES AND RIGHTS INCIDENTAL THERETO, RESERVED HEREON
  - 3 AN EASEMENT FOR PRIVATE DRIVEWAY ACCESS PURPOSES RESERVED HEREON
  - 4 INDICATES PUBLIC STORM DRAIN EASEMENTS FOR THE CONSTRUCTION AND MAINTENANCE OF STORM DRAIN FACILITIES
  - DENOTES ITEM PLOTTED HEREON

## CURVE TABLE

CURVE	DELTA	RADIUS	LENGTH
C1	10°00'00"	85.00'	14.84'
C2	56°30'20"	76.00'	74.95'
C3	109°39'18"	76.00'	145.45'
C4	10°25'05"	76.00'	13.82'
C5	86°27'43"	45.00'	67.91'
C6	3°11'35"	967.00'	53.89'
C7	86°27'43"	12.00'	18.11'
C8	5°37'15"	1000.00'	98.10'
C9	25°46'57"	467.00'	210.15'
C10	15°35'16"	320.00'	87.06'
C11	208°26'07"	51.00'	185.53'
C12	28°20'34"	533.00'	263.66'
C13	2°27'29"	353.00'	15.14'
C14	9°00'16"	100.00'	15.72'
C15	54°37'03"	51.00'	48.62'
C16	9°03'25"	85.00'	13.44'
C18	29°54'13"	22.40'	11.69'
C19	15°13'02"	96.57'	25.65'
C20	25°24'06"	22.40'	9.63'
C21	48°50'18"	3.25'	2.77'
C22	51°20'34"	51.89'	25.43'
C23	34°13'58"	6.75'	4.03'
C24	25°10'42"	61.67'	27.10'
C25	34°11'11"	22.13'	13.20'
C26	40°28'30"	23.50'	16.60'
C27	5°18'15"	143.43'	533.00'
C28	17°12'30"	108.83'	32.69'
C29	105°01'08"	6.51'	11.93'
C30	10°24'41"	533.00'	96.85'
C31	153°49'04"	51.00'	136.92'
C32	4°27'27"	533.00'	41.47'
C33	42°43'53"	76.00'	56.68'

## LINE TABLE

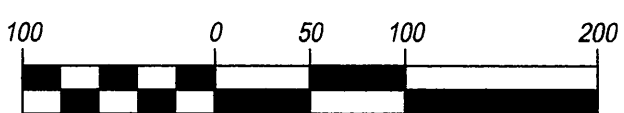
LINE	BEARING	LENGTH
L1	N06°05'54"W	43.50'
L2	N05°41'53"E	49.67'
L3	N73°26'32"W	20.00'
L4	N16°33'28"E	38.06'
L5	N64°14'48"E	43.50'
L7	N87°26'04"E	80.92'
L8	N49°04'50"W	35.82'
L9	N08°09'12"W	15.23'
L10	N08°57'20"W	12.17'
L11	N01°20'21"E	18.17'
L12	N33°37'41"E	24.46'
L13	N27°33'44"W	58.97'
L14	N22°42'55"E	15.10'
L15	N57°25'04"E	31.75'
L16	N54°24'58"E	9.07'
L17	N24°33'19"E	6.17'
L18	N07°07'42"E	12.97'

## LINE TABLE

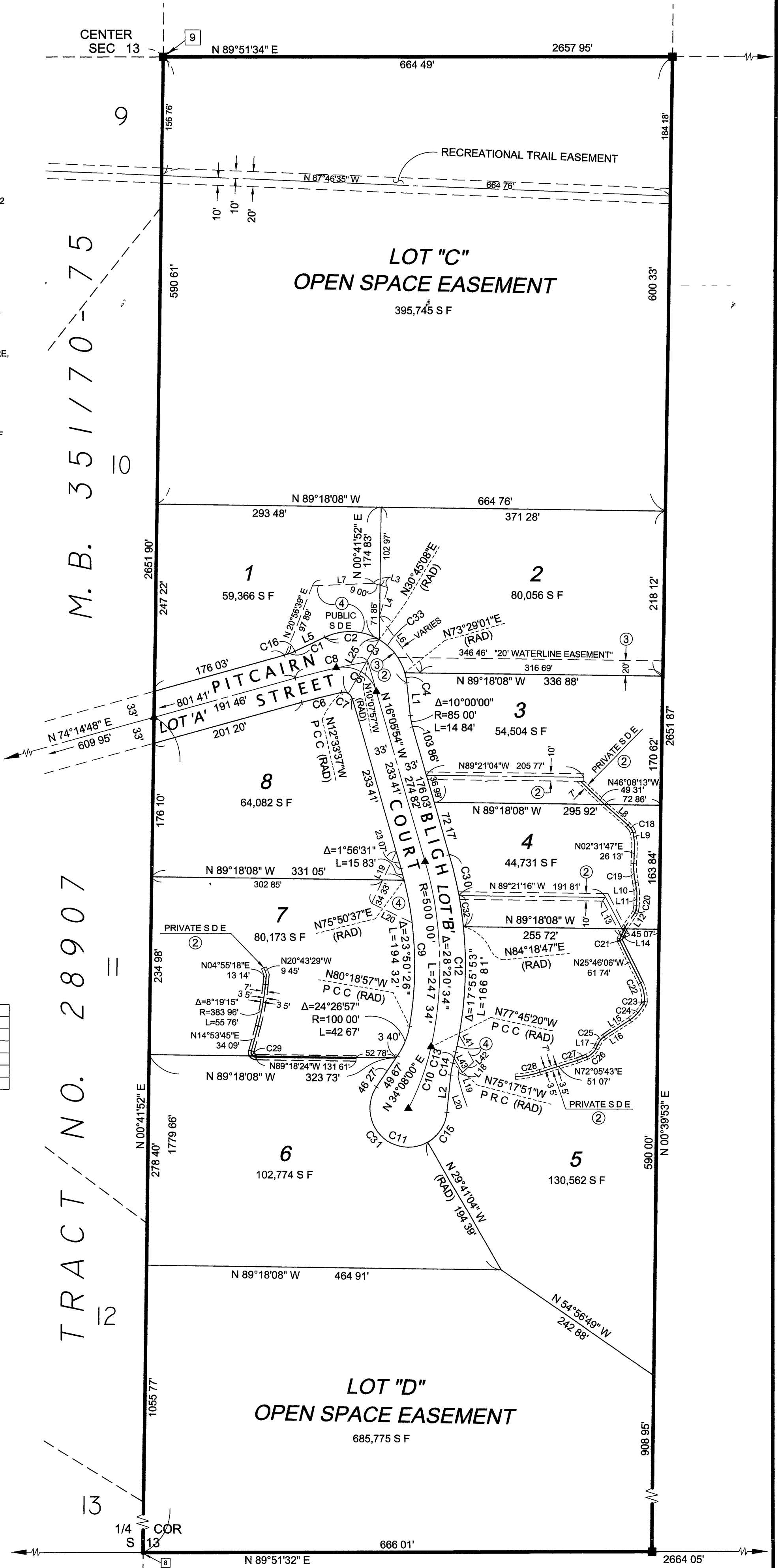
LINE	BEARING	LENGTH
L19	N25°28'31"E	75.43'
L20	N64°31'29"W	59.30'
L22	N28°17'16"W	39.86'
L23	N45°46'22"E	20.80'
L24	N28°17'16"W	21.54'
L25	N29°39'41"E	81.94'



## GRAPHIC SCALE



(IN FEET)  
SCALE 1" = 100'



city

M.B. 351 / 70 - 75

TRACT NO. 28907