

IN THE CITY OF RIVERSIDE, COUNTY OF RIVERSIDE, STATE OF CALIFORNIA

Tract 31755

BEING A SUBDIVISION OF A PORTION OF SECTIONS 28 AND 33 OF T.2.S., R.5W., S.B.M. RENCIVIL - MARCH 2004

FILED THIS 5th DAY OF December 2005 AT 8:00 A.M. IN BOOK 394 OF MAPS, AT PAGES 33-40, AT THE REQUEST OF THE CITY CLERK NO. 2005-1002168 FEE 23.00

LARRY W WARD, COUNTY ASSESSOR, CLERK AND RECORDER BY [Signature] DEPUTY SUBDIVISION GUARANTEED BY FIDELITY NATIONAL TITLE INSURANCE COMPANY

OWNER'S STATEMENT

WE HEREBY STATE THAT WE ARE THE OWNERS OF, OR HAVE SOME RIGHT, TITLE OR INTEREST IN THE LAND INCLUDED WITHIN THE SUBDIVISION SHOWN ON THE ANNEXED MAP, THAT WE ARE THE ONLY PERSONS WHOSE CONSENT IS NECESSARY TO PASS A CLEAR TITLE TO SAID LAND AND WE CONSENT TO THE PREPARATION AND RECORDATION OF THIS SUBDIVISION MAP AS SHOWN WITHIN THE DISTINCTIVE BORDER LINE

WE HEREBY DEDICATE TO PUBLIC USE FOR PUBLIC STREET AND PUBLIC UTILITY PURPOSES, LOT "A"

WE HEREBY RESERVE FOR OURSELVES, ASSIGNS AND LOT OWNERS WITHIN THIS SUBDIVISION FOR PRIVATE STREET PURPOSES LOTS "X" THROUGH "Z" INCLUSIVE, LOTS "AA" THROUGH "HH" INCLUSIVE, LOT "JJ", LOT "NN", LOTS "OO" THROUGH "SS" INCLUSIVE, LOTS "UU" THROUGH "ZZ" INCLUSIVE, LOTS "AAA" THROUGH "KKK" INCLUSIVE, LOT "MMM" AND LOT "NNN"

WE HEREBY DEDICATE TO THE CITY OF RIVERSIDE AN EASEMENT FOR INGRESS AND EGRESS OF SERVICE AND EMERGENCY VEHICLES, SANITARY SEWER FACILITIES, PUBLIC UTILITY AND TELECOMMUNICATION PURPOSES IN, UNDER, THROUGH AND ACROSS "X" THROUGH "Z" INCLUSIVE, LOTS "AA" THROUGH "HH" INCLUSIVE, LOT "JJ", LOT "NN", LOTS "OO" THROUGH "SS" INCLUSIVE, LOTS "UU" THROUGH "ZZ" INCLUSIVE, LOTS "AAA" THROUGH "KKK" INCLUSIVE, LOT "MMM" AND LOT "NNN" LABELED "PRIVATE STREET"

WE HEREBY RESERVE LOTS "K" THROUGH LOTS "N", LOTS "P" THROUGH "R", LOT "T", LOT "U", LOT "LL", LOT "II", LOT "MM" AND LOT "LLL" FOR PRIVATE OPEN SPACE PURPOSES, LOT "C" FOR PRIVATE CLUB HOUSE AND POOL, LOT "W" AND LOT "TT" FOR PRIVATE STORAGE AND LOTS "OOO", "B", "D", "E", "F", "H", "I", "J", "L", "O" AND "S" FOR PRIVATE LANDSCAPE, FOR OURSELVES, ASSIGNS AND LOT OWNERS WITHIN THIS SUBDIVISION

WE HEREBY RESERVE LOT "G" AND LOT "V" FOR PRIVATE RECREATIONAL PURPOSES

WE HEREBY RELINQUISH VEHICULAR ACCESS RIGHTS TO LOT "A", JURUPA AVENUE, EXCEPT AT APPROVED INTERSECTION.

WE HEREBY DEDICATE TO THE CITY OF RIVERSIDE AS AN EASEMENT FOR THE CONSTRUCTION AND MAINTENANCE OF SANITARY SEWER FACILITIES THE EASEMENT DESIGNATED AS "12' SEWER EASEMENT", AS SHOWN HEREON.

WE HEREBY DEDICATE TO THE PUBLIC AN AVIATION EASEMENT AND RIGHT OF FLIGHT FOR THE PASSAGE OF AIRCRAFT OVER LOTS 1 THROUGH 114 INCLUSIVE, LOTS A THROUGH Z INCLUSIVE, LOTS AA THROUGH JJ INCLUSIVE, LOTS LL THROUGH ZZ INCLUSIVE AND LOTS AAA THROUGH OOO INCLUSIVE

WE HEREBY REQUEST THAT THE FOLLOWING PUBLIC STREETS AND EASEMENTS, WHICH ARE NOT SHOWN ON THE ATTACHED MAP, BE ABANDONED IN CONFORMANCE WITH SECTION 66434 OF THE SUBDIVISION MAP ACT

THAT CERTAIN EASEMENT FOR WATER DITCHES RECORDED OCTOBER 18, 1902, IN BOOK 123, PAGE 157, OF DEEDS,

THAT CERTAIN EASEMENT FOR DITCHES AND CONDUIT RECORDED IN AUGUST 14, 1885, IN BOOK 42, PAGE 296, OF DEEDS AND

THAT CERTAIN EASEMENT FOR WATER DITCHES RECORDED IN FEBRUARY 26, 1897, IN BOOK 55, PAGE 305, OF DEEDS.

THAT PORTION OF CORRELL STREET WHICH IS SHOWN IN DETAIL "B" OF THE ATTACHED MAP

WE HEREBY DEDICATE TO THE CITY OF RIVERSIDE AND THE HOA AS AN EASEMENT FOR THE CONSTRUCTION AND MAINTENANCE OF PUBLIC UTILITIES AND PRIVATE STREETS THE EASEMENTS DESIGNATED AS "5' PUE "

WE HEREBY RESERVE THE EASEMENTS DESIGNATED AS "ACCESS" FOR THE HOMEOWNERS ASSOCIATION

WE HEREBY RESERVE THE "PRIVATE" IRREVOCABLE EASEMENTS AS SHOWN ON THE MAP IN FAVOR OF AND FOR THE USE AND ENJOYMENT BENEFITING THE LOT NUMBER INDICATED, EASEMENT RIGHTS AND RESTRICTIONS AS GRANTED AND RESTRICTED IN THE CONVENANTS, CONDITIONS AND RESTRICTIONS OF THE HOMEOWNERS ASSOCIATION

ATHERTON SQUARE, LLC, A CALIFORNIA LIMITED LIABILITY COMPANY BY CORMAN LEIGH, COMMUNITIES, INC A CALIFORNIA CORPORATION MANAGER-MEMBER

BY [Signature] RICK SCOTT ITS CHIEF OPERATING OFFICER

PACIFIC WESTERN NATIONAL BANK, N A , AS TRUSTEE, UNDER THAT CERTAIN DEED OF TRUST RECORDED APRIL 29, 2004, AS INSTRUMENT NO 2004-0315216 OF OFFICIAL RECORDS

NAME: TITLE: NAME: TITLE: Union Bank of California, N.A. Beneficiary

UNION BANK OF CALIFORNIA, N.A. A CALIFORNIA CORPORATION, AS TRUSTEE, UNDER THAT CERTAIN DEED OF TRUST RECORDED JUNE 9, 2005, AS INSTRUMENT NO. 2005-0457814, OF OFFICIAL RECORDS

NAME: Donna Morgan TITLE: Vice President

SIGNATURE OMISSIONS

PURSUANT TO SECTION 66436 OF THE SUBDIVISION MAP ACT OF THE STATE OF CALIFORNIA, THE SIGNATURES OF THE FOLLOWING EASEMENT HOLDERS HAVE BEEN OMITTED AS THEIR INTERESTS CANNOT RIPEN INTO A FEE

RIVERSIDE COUNTY FLOOD CONTROL AND WATER CONSERVATION DISTRICT HOLDER OF A 20' WIDE EASEMENT FOR UNDERGROUND STORM DRAIN RECORDED AS INSTRUMENT# 93555 OF OFFICIAL RECORDS

EMMA HARRIS HOLDER OF AN EASEMENT FOR A DITCH OR PIPELINES RECORDED IN AUGUST 6, 1917, IN BOOK 467, PAGE 120 OF DEEDS

CITY OF RIVERSIDE HOLDER OF A 10' WIDE STORM DRAIN EASEMENT RECORDED IN APRIL 3, 1970, AS INSTRUMENT NO 31427, OF OFFICIAL RECORDS

CITY OF RIVERSIDE HOLDER OF A 30' WIDE STORM DRAIN AND WATERLINE EASEMENT RECORDED JUNE 4, 1987, AS INSTRUMENT NO 158021, OF OFFICIAL RECORDS

SURVEYOR'S STATEMENT

THIS MAP WAS PREPARED BY ME UNDER MY DIRECTION AND IS BASED UPON A FIELD SURVEY IN CONFORMANCE WITH THE REQUIREMENTS OF THE SUBDIVISION MAP ACT AND LOCAL ORDINANCE AT THE REQUEST OF DAN LEIGH IN AUGUST, 2003 I HEREBY STATE THAT THIS FINAL MAP SUBSTANTIALLY CONFORMS TO THE CONDITIONALLY APPROVED TENTATIVE MAP. I HEREBY STATE THAT ALL MONUMENTS ARE OF THE CHARACTER AND OCCUPY THE POSITIONS INDICATED, OR THAT THEY WILL BE SET IN THOSE POSITIONS WITHIN ONE YEAR FROM THE RECORDATION DATE OF THIS MAP. THE MONUMENTS ARE OR WILL BE SUFFICIENT TO ENABLE THE SURVEY TO BE RETRACED. THE SURVEY IS TRUE AND COMPLETE AS SHOWN.

DATED [Signature] 8/10/05 RUDY E NUNEZ LS 7394 EXP 12/31/2005



SOILS REPORT

A PRELIMINARY SOILS REPORT WAS PREPARED FOR THIS SUBDIVISION BY SID GEOTECHNICAL, INC. ON JANUARY 27, 2003 AS REQUIRED BY THE HEALTH AND SAFETY CODE OF THE STATE OF CALIFORNIA, SECTION 17953.

CITY ENGINEER'S STATEMENT

I HEREBY CERTIFY THAT I HAVE EXAMINED THIS MAP, THAT THE SUBDIVISION AS SHOWN HEREON IS SUBSTANTIALLY THE SAME AS IT APPEARS ON THE TENTATIVE MAP OF TRACT 31755 WHICH WAS APPROVED BY THE CITY OF RIVERSIDE PLANNING COMMISSION ON FEBRUARY 3, 2004 AND ANY APPROVED ALTERATIONS THEREOF, THAT ALL PROVISIONS OF THE SUBDIVISION MAP ACT (DIVISION 2 OF TITLE 7 OF THE CALIFORNIA GOVERNMENT CODE) AND TITLE 18 OF THE RIVERSIDE MUNICIPAL CODE APPLICABLE AT THE TIME OF APPROVAL OF THE TENTATIVE MAP HAVE BEEN COMPLIED WITH, THAT THE EASEMENTS FOR SEWER AND DRAINAGE FACILITIES AS SHOWN ON THE MAP HAVE BEEN APPROVED, THAT THE PLANS FOR DRAINS, DRAINAGE WORKS, AND SEWERS SUFFICIENT TO MITIGATE FLOOD DAMAGE TO ALL LOTS IN THE SUBDIVISION HAVE BEEN APPROVED, THAT A COMPLETE SET OF PLANS COVERING ALL IMPROVEMENTS HAS BEEN FILED WITH THE PUBLIC WORKS DEPARTMENT AND THAT THE SAME HAVE BEEN CHECKED AND APPROVED; AND THAT ALL IMPROVEMENTS HAVE BEEN COMPLETED IN ACCORDANCE WITH THE APPROVED PLANS OR THAT THE SUBDIVIDER HAS ENTERED INTO AN AGREEMENT WITH THE CITY OF RIVERSIDE COVERING COMPLETION OF ALL IMPROVEMENTS AND SPECIFYING THE TIME FOR COMPLETING THE SAME.

DATED Oct 14 2005 THOMAS J. BOYD RCE 36170 LIC EXP. 6/30/06 CITY ENGINEER BY [Signature]

CITY SURVEYOR'S STATEMENT

I HEREBY STATE THAT I HAVE EXAMINED THE MAP, AND THAT I AM SATISFIED THAT THE MAP IS TECHNICALLY CORRECT, AND THAT ALL MONUMENTS HAVE BEEN SET OR A CASH DEPOSIT SUFFICIENT TO COVER THEIR PLACEMENT HAS BEEN DEPOSITED WITH THE CITY OF RIVERSIDE

DATED Oct 13 2005 MARK S BROWN L S 5655 LIC EXP 9/30/06 CITY SURVEYOR BY [Signature]

CITY CLERK'S CERTIFICATE

RESOLVED THAT THIS MAP CONSISTING OF 9 SHEETS BE, AND THE SAME IS HEREBY ACCEPTED AS THE FINAL MAP OF TRACT 31755.

LOT "A" IS HEREBY ACCEPTED FOR PUBLIC STREET AND PUBLIC UTILITY PURPOSES

THE EASEMENT DESIGNATED AS "12' SEWER EASEMENT" IS HEREBY ACCEPTED AS AN EASEMENT FOR THE CONSTRUCTION AND MAINTENANCE OF SANITARY SEWER FACILITIES

LOTS "X" THROUGH "Z" INCLUSIVE, LOTS "AA" THROUGH "HH" INCLUSIVE, LOT "JJ", LOT "NN", LOTS "OO" THROUGH "SS" INCLUSIVE, LOTS "UU" THROUGH "ZZ" INCLUSIVE, LOTS "AAA" THROUGH "KKK" INCLUSIVE, LOT "MMM" AND LOT "NNN" ARE HEREBY ACCEPTED AS EASEMENTS FOR INGRESS AND EGRESS OF SERVICE AND EMERGENCY VEHICLES, SANITARY SEWER FACILITIES, PUBLIC UTILITIES AND TELECOMMUNICATION PURPOSES

AN AVIGATION EASEMENT AND RIGHT OF FLIGHT FOR THE PASSAGE OF AIRCRAFT OVER LOTS 1 THROUGH 114 INCLUSIVE, LOTS A THROUGH Z INCLUSIVE, LOT AA, LOT BB, LOTS DD THROUGH JJ INCLUSIVE, LOTS LL THROUGH ZZ INCLUSIVE AND LOTS AAA THROUGH OOO INCLUSIVE IS HEREBY ACCEPTED

THAT THE FOLLOWING STREETS AND EASEMENTS ARE HEREBY ABANDONED IN CONFORMANCE WITH SECTION 66434 OF THE SUBDIVISION MAP ACT

THAT CERTAIN EASEMENT FOR WATER DITCHES RECORDED OCTOBER 18, 1902, IN BOOK 123, PAGE 157, OF DEEDS,

THAT CERTAIN EASEMENT FOR DITCHES AND CONDUIT RECORDED IN AUGUST 14, 1885, IN BOOK 42, PAGE 296, OF DEEDS AND

THAT CERTAIN EASEMENT FOR WATER DITCHES RECORDED IN FEBRUARY 26, 1897, IN BOOK 55, PAGE 305, OF DEEDS

THAT PORTION OF CORRELL STREET WHICH IS SHOWN IN DETAIL "B" OF THE ATTACHED MAP

THE EASEMENT DESIGNATED AS "5' PUE" ARE HEREBY ACCEPTED AS EASEMENTS FOR CONSTRUCTION AND MAINTENANCE OF PUBLIC UTILITIES.

THE CITY CLERK IS HEREBY AUTHORIZED AND DIRECTED TO ATTEST SAID MAP BY SIGNING HERE NAME THERETO AS CITY CLERK OF THE CITY OF RIVERSIDE, STATE OF CALIFORNIA

I HEREBY CERTIFY THAT THE FORGOING RESOLUTION WAS ACCEPTED BY THE MAYOR AND COUNCIL OF THE CITY OF RIVERSIDE THIS 25th DAY OF Oct, 2005.

COLLEEN J. NICOL CITY CLERK OF THE CITY OF RIVERSIDE, CALIFORNIA BY [Signature]

PUBLIC UTILITIES CERTIFICATE

I HEREBY CERTIFY THAT THE SUBDIVIDER NAMED ON THIS MAP HAS DEPOSITED WITH THE CITY OF RIVERSIDE PUBLIC UTILITIES DEPARTMENT SUFFICIENT FUNDS OR MADE THE REQUIRED ARRANGEMENTS AND PROVISIONS FOR THE INSTALLATION OF WATER AND ELECTRIC FACILITIES NECESSARY TO PROVIDE SERVICE TO ALL LOTS AS SHOWN ON THIS MAP; AND THAT ALL PUBLIC UTILITY EASEMENTS SHOWN ARE SUFFICIENT FOR ALL REQUIREMENTS OF WATER AND ELECTRIC DIVISIONS OF THE PUBLIC UTILITIES DEPARTMENT OF THE CITY OF RIVERSIDE

DATE: October 13, 2005 BY [Signature] DAVID H WRIGHT, PUBLIC UTILITIES DIRECTOR MM DP

UTILITIES EASEMENT STATEMENT

THE CITY OF RIVERSIDE BEING THE RECORD OWNERS OF THE FOLLOWING DESCRIBED EASEMENTS HEREBY CONSENTS TO THE MAKING AND FILING OF THE ANNEXED MAP.

A 30' WIDE STORM DRAIN AND WATERLINE EASEMENT RESERVED IN RESOLUTION NO 16310 VACATING A PORTION OF CORRELL STREET, RECORDED JUNE 4, 1987, AS INSTRUMENT NO 158021, OF OFFICIAL RECORDS

DATE: October 13, 2005 BY [Signature] DAVID H WRIGHT, PUBLIC UTILITIES DIRECTOR MM DP

CITY TREASURER'S CERTIFICATE

I HEREBY CERTIFY THAT ACCORDING TO THE RECORDS OF THIS OFFICE AS OF THIS DATE, THE REAL PROPERTY SHOWN ON THIS MAP IS NOT SUBJECT TO ANY SPECIAL ASSESSMENTS, BONDS, AND/OR LIENS WHICH HAVE NOT BEEN PAID IN FULL, EXCEPT THOSE ITEMS NOTED BELOW, NONE

THIS CERTIFICATE DOES NOT INCLUDE ANY SPECIAL ASSESSMENTS, THE BONDS OF WHICH HAVE NOT BECOME A LIEN UPON SAID PROPERTY

DATED: 10/13/05 PAUL C SUNDEEN CHIEF FINANCIAL OFFICER/ TREASURER BY [Signature]

TAX BOND STATEMENT

I HEREBY STATE THAT A BOND IN THE SUM OF \$21,000 HAS BEEN EXECUTED AND FILED WITH THE BOARD OF SUPERVISORS OF THE COUNTY OF RIVERSIDE, CALIFORNIA, CONDITIONED UPON PAYMENT OF ALL TAXES, STATE, COUNTY, MUNICIPAL OR LOCAL, AND ALL SPECIAL ASSESSMENTS COLLECTED AS TAXES WHICH AT THE TIME OF THE FILING OF THIS MAP WITH THE COUNTY RECORDER ARE A LIEN AGAINST SAID PROPERTY, BUT NOT YET PAYABLE, AND SAID BOND HAS BEEN DULY APPROVED BY SAID BOARD OF SUPERVISORS

DATED: NANCY ROLERO, CLERK OF THE BOARD OF SUPERVISORS BY: PAUL McDONNELL, COUNTY TAX COLLECTOR

Scale: 1"=80'

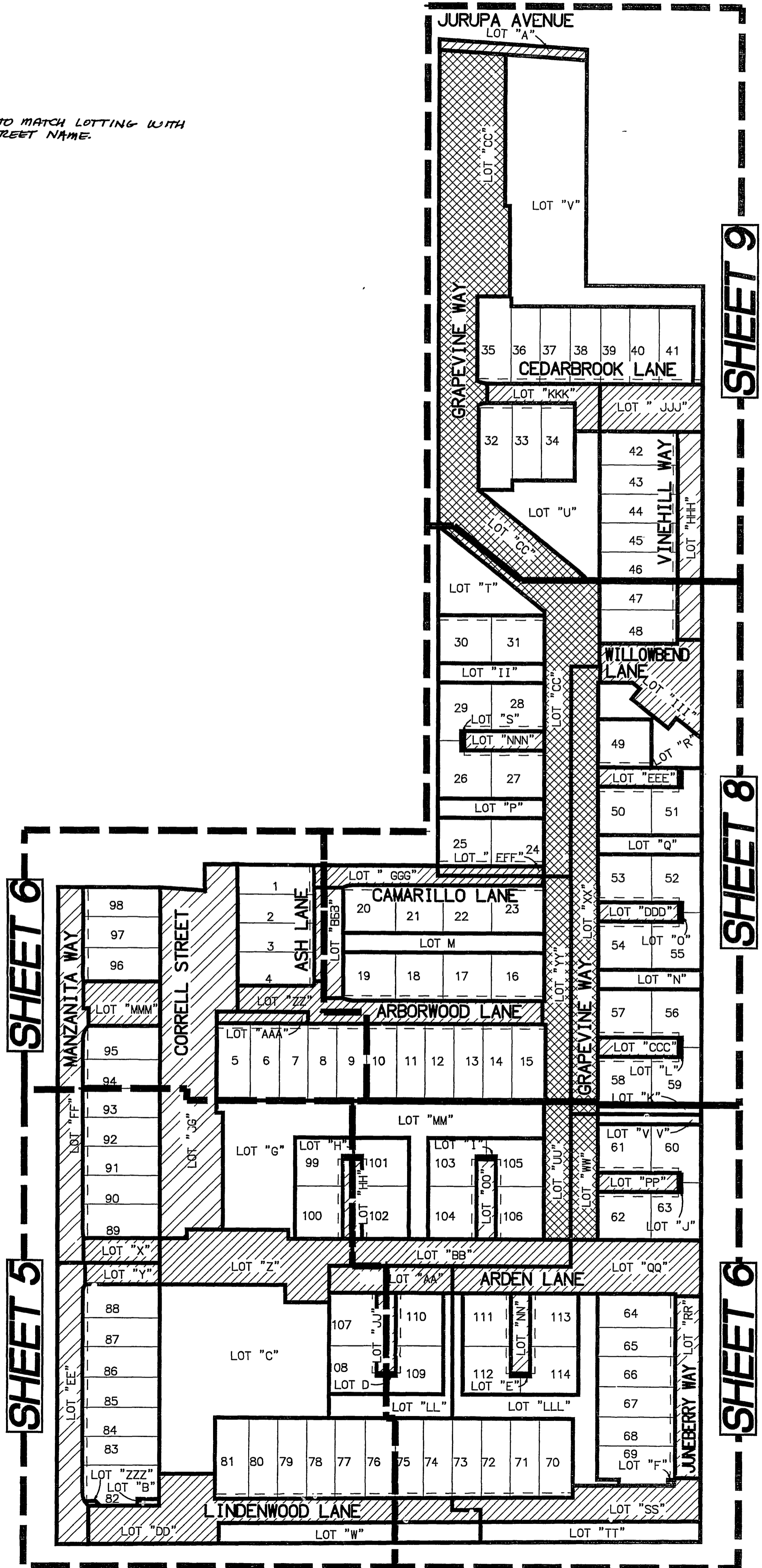
IN THE CITY OF RIVERSIDE, COUNTY OF RIVERSIDE,
STATE OF CALIFORNIA

Tract 31755

BEING A SUBDIVISION OF A PORTION OF SECTIONS
28 AND 33 OF T.2.S., R.5W., S.B.M.
RENCIVIL - MARCH 2004

NOTE:

SHADING IS AN AID TO MATCH LOTTING WITH
CORRESPONDING STREET NAME.

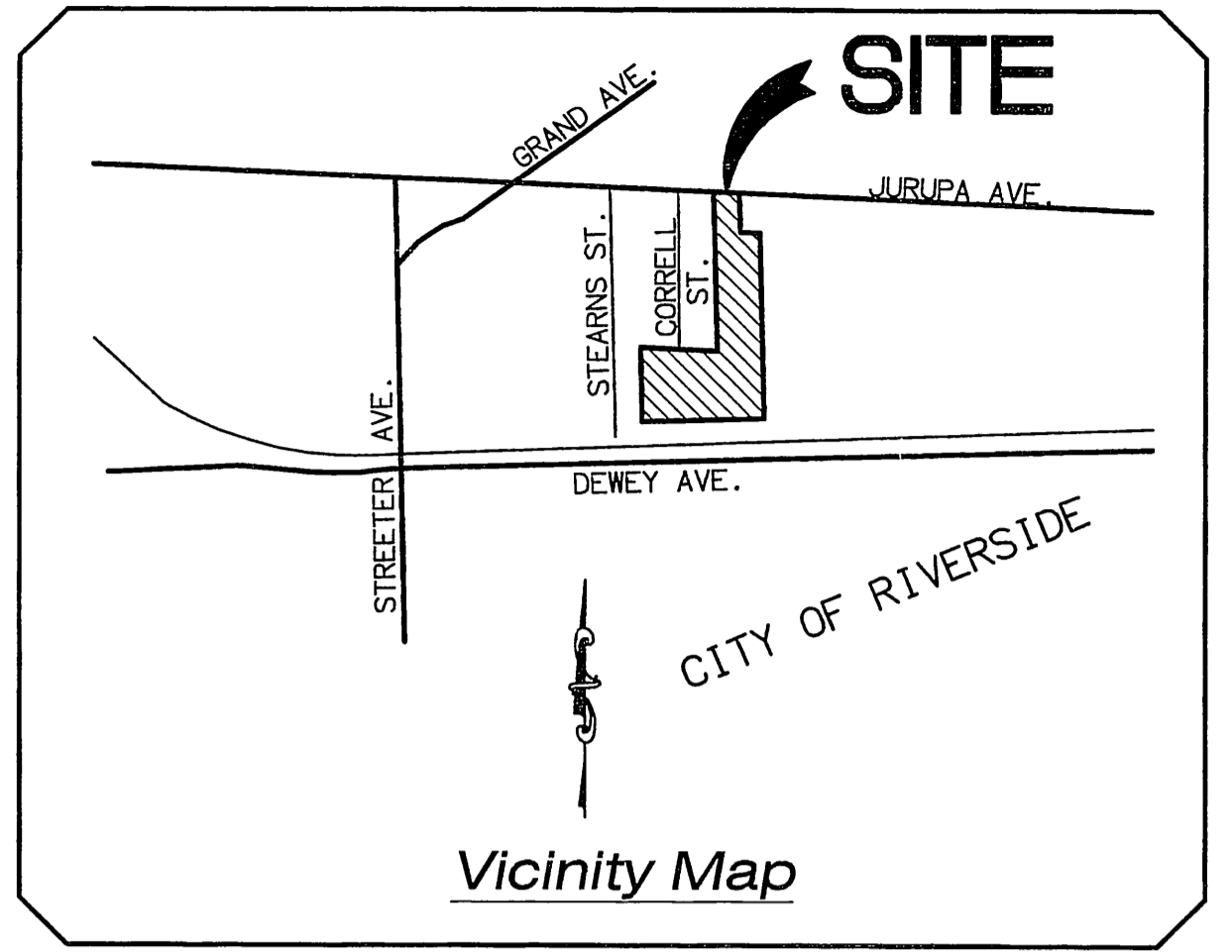


Tract 31755

BEING A SUBDIVISION OF A PORTION OF SECTIONS
28 AND 33 OF T.2.S., R.5W., S.B.M.
RENCIVIL - MARCH 2004

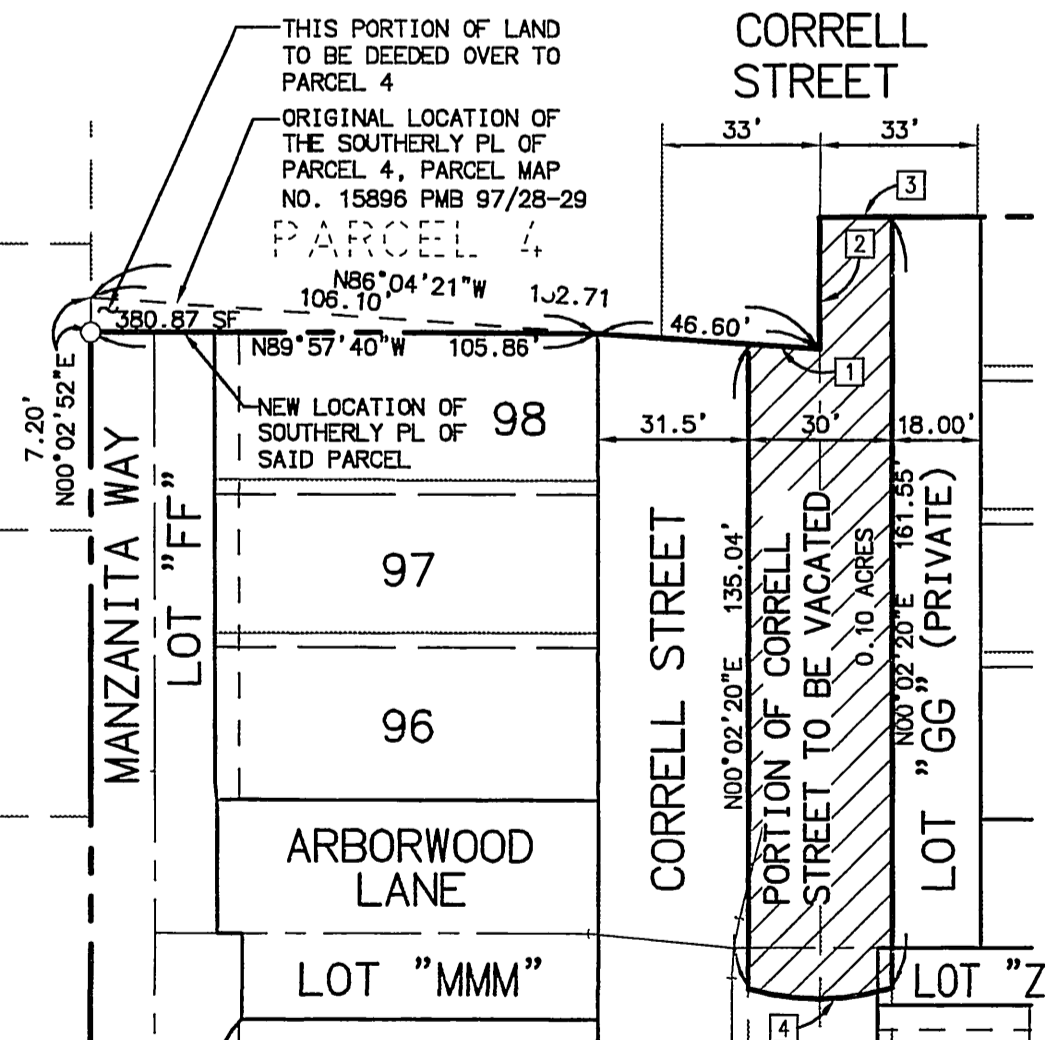
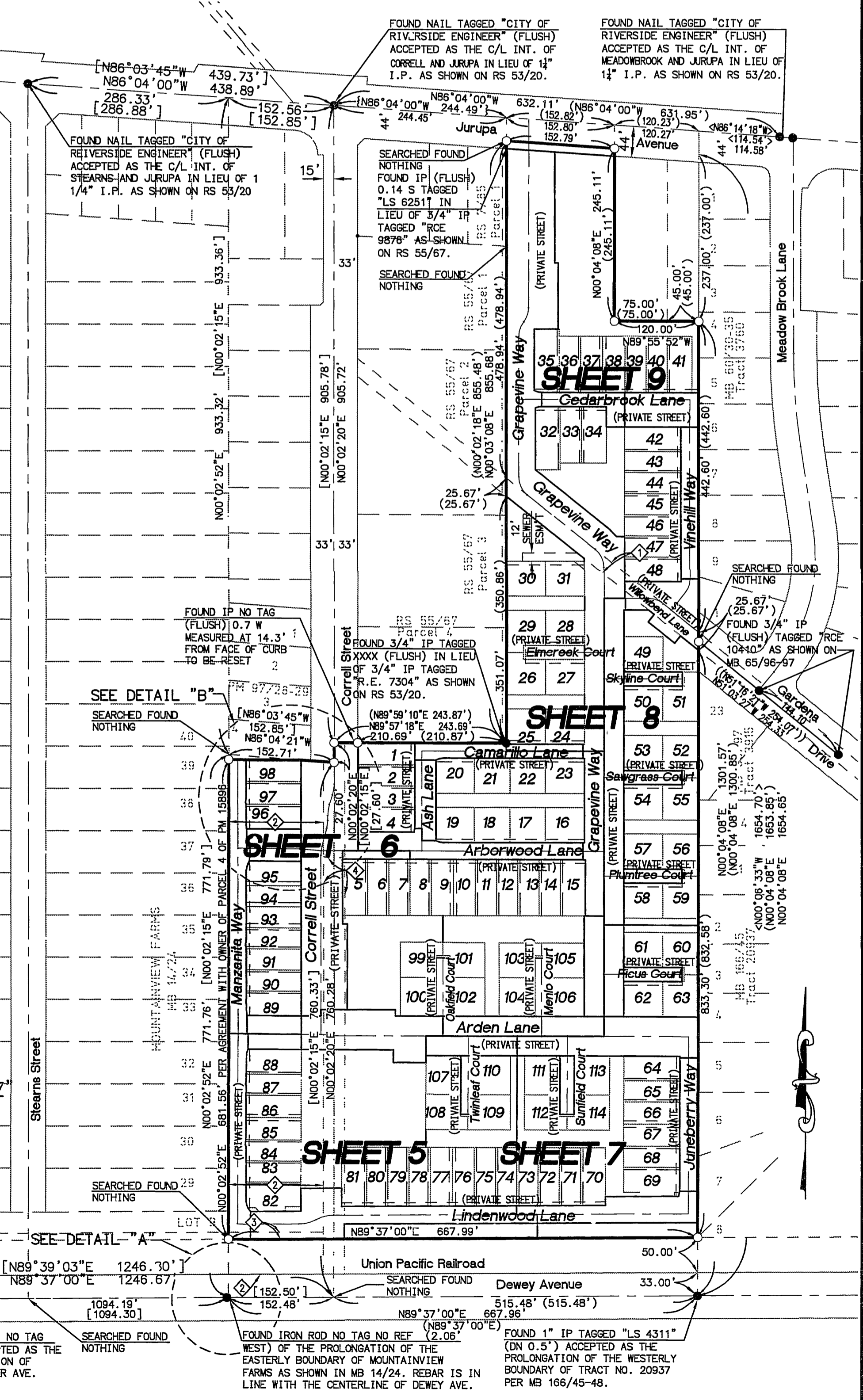
SURVEYOR'S NOTES

- THE BASIS OF BEARINGS IS THE CENTERLINE OF JURUPA AVENUE TAKEN AS BEING N86°04'00"W SHOWN BY MAP ON FILE IN BOOK 53, PAGE 18-20 OF RECORDS OF SURVEY, RECORDS OF RIVERSIDE COUNTY, CALIFORNIA.
- FOUND MONUMENT AS NOTED
- INDICATES SET 1" IRON PIPE WITH PLASTIC PLUG STAMPED "L.S. 7394". CENTERLINE MONUMENTS SET WITH 1" IRON PIPE WITH PLASTIC PLUG STAMPED "L.S. 7394" SET FLUSH IN PAVEMENT SURFACE.
- A NAIL AND BRASS TAG STAMPED "L.S. 7394" SHALL BE SET IN THE CONCRETE CURB ON THE PROLONGATION OF THE SIDE LOT LINE IN LIEU OF THE FRONT LOT CORNERS. A 1" IRON PIPE WITH PLASTIC PLUG STAMPED "L.S. 7394" WILL BE SET AT REAR LOT CORNERS UNLESS OTHERWISE NOTED. WHERE REAR LOT CORNERS ABUT A PERIMETER WALL, A NAIL AND BRASS TAG STAMPED "L.S. 7394" SHALL BE SET IN THE TOP OF THE WALL.
- IN THE EVENT THE AFOREMENTIONED MONUMENTS CANNOT BE SET DUE TO UNFORESEEN CIRCUMSTANCES A LEAD, NAIL AND "L.S. 7394" TAG SHALL BE SET, AT THE TRUE LOCATION CALLED FOR BY THIS MAP, IN LIEU OF THE AFOREMENTIONED MONUMENTS.
- INDICATES CURVE DATA CALLED OUT IN TABULAR FORM.
- () RECORD DATA PER RS 53/18-20
[] RECORD DATA PER PM 97/28-29
{} RECORD DATA PER RS 55/67
◇ RECORD DATA PER MB 60/34-35
(◇) RECORD DATA PER MB 65/96-97
- THIS TRACT CONTAINS 114 NUMBERED LOTS. AREA: 16.73 ACRES
- INDICATES SUBDIVISION BORDER LINE.
- ALL FOUND MONUMENTS DISTURBED AND/OR DESTROYED AS A RESULT OF CONSTRUCTION WILL BE RESET WITH LIKE KIND TAGGED L.S. 7394, UNLESS OTHERWISE NOTED.
- (R) DENOTES RADIAL BEARING
- P.R.C. INDICATES POINT OF REVERSE CURVATURE.
- P.C.C. INDICATES POINT OF COMPOUND CURVATURE.
- SEE SHEET 4 FOR STREET AND HOA LOT INDEX



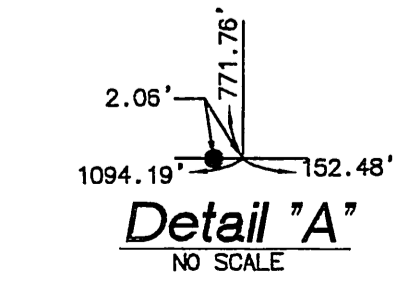
Easements

- 30' EASEMENT TO RIVERSIDE COUNTY FLOOD CONTROL AND WATER CONSERVATION DISTRICT FOR UNDERGROUND STORM DRAIN AND INCIDENTAL PURPOSES, RECORDED SEPTEMBER 12, 1969, INSTRUMENT NO. 93555, O.R.
- EASEMENT TO EMMA HARRIS FOR A DITCH OR PIPELINES, RECORDED AUGUST 6, 1917, BOOK 467, PAGE 120, OF DEEDS
- 10' EASEMENT TO CITY OF RIVERSIDE FOR STORM DRAIN FACILITIES, RECORDED APRIL 3, 1970, INSTRUMENT NO. 31427, O.R.
- 30' EASEMENT TO THE CITY OF RIVERSIDE FOR VARIOUS PURPOSES, RECORDED JUNE 4, 1987, INSTRUMENT NO. 158021, O.R.



CURVE & LINE DATA				
NO.	DELTA/BRG	RADIUS	LENGTH	REMARK
1	N86°04'21"W	---	15.03'	---
2	N00°02'20"E	---	27.60'	---
3	N89°57'18"E	---	15.00'	---
4	Δ= 34°12'34"	51.00'	30.45'	---

Detail "B"
SCALE: 1"=40'



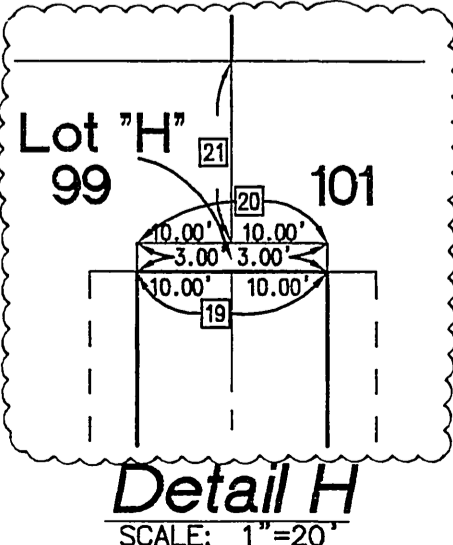
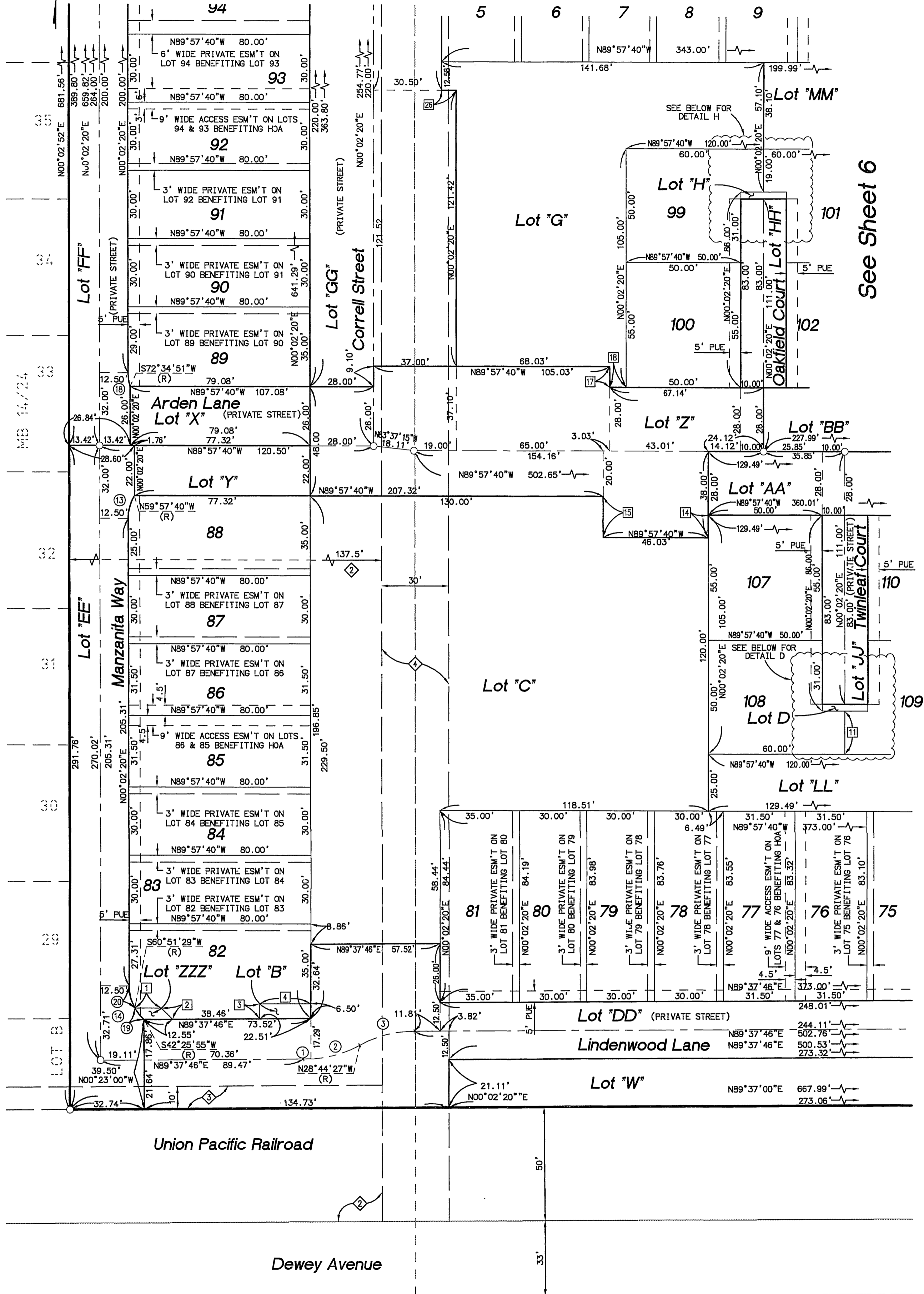
Detail "A"
NO SCALE

Tract 31755

BEING A SUBDIVISION OF A PORTION OF SECTIONS 28 AND 33 OF T.2.S., R.5W., S.B.M. RENCIVIL - MARCH 2004

See Sheet 7

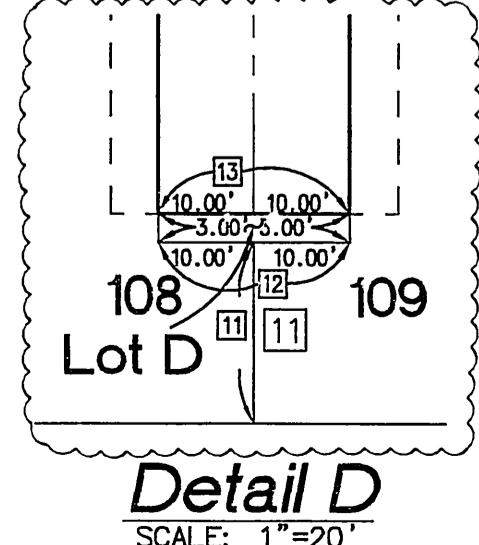
See Sheet 7



CURVE DATA				
Ø	DELTA/BRG	RADIUS	LENGTH	REMARK
1	Δ= 03°28'51"	50.00'	3.04'	"
2	Δ= 28°21'27"	50.00'	24.75'	"
3	Δ= 28°21'27"	50.00'	24.75'	"
13	Δ= 30°00'00"	20.00'	10.47'	"
14	Δ= 47°32'24"	20.00'	16.55'	"
18	Δ= 17°27'27"	20.00'	6.09'	"
19	Δ= 18°21'16"	20.00'	6.40'	"
20	Δ= 29°06'49"	20.00'	10.11'	"

SURVEYOR'S NOTES
 SEE SHEET 3 FOR ALL STREET AND HOA LOT INDEX
 SEE SHEET 4 FOR ALL EASEMENT NOTES

LINE DATA				
Ø	DELTA/BRG	RADIUS	LENGTH	REMARK
1	N89°57'40"W	---	11.57'	"
2	N45°10'20"W	---	6.96'	"
3	N00°02'20"E	---	6.66'	"
4	N89°57'40"W	---	22.51'	"
11	N00°02'20"E	---	19.00'	"
12	N89°57'40"W	---	20.00'	"
13	N89°57'40"W	---	20.00'	"
14	N00°02'20"E	---	10.00'	"
15	N00°02'20"E	---	18.00'	"
17	N00°02'20"E	---	9.10'	"
18	N89°57'40"W	---	7.14'	"
19	N89°57'40"W	---	20.00'	"
20	N89°57'40"W	---	20.00'	"
21	N00°02'20"E	---	19.00'	"
26	N89°57'40"W	---	6.50'	"



394
37
City

Scale: 1"=30'

IN THE CITY OF RIVERSIDE, COUNTY OF RIVERSIDE,
STATE OF CALIFORNIA

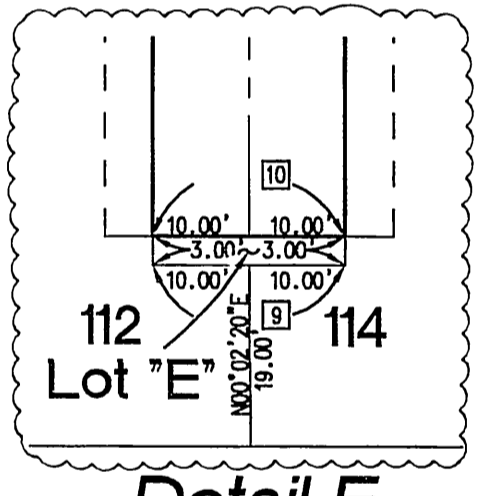
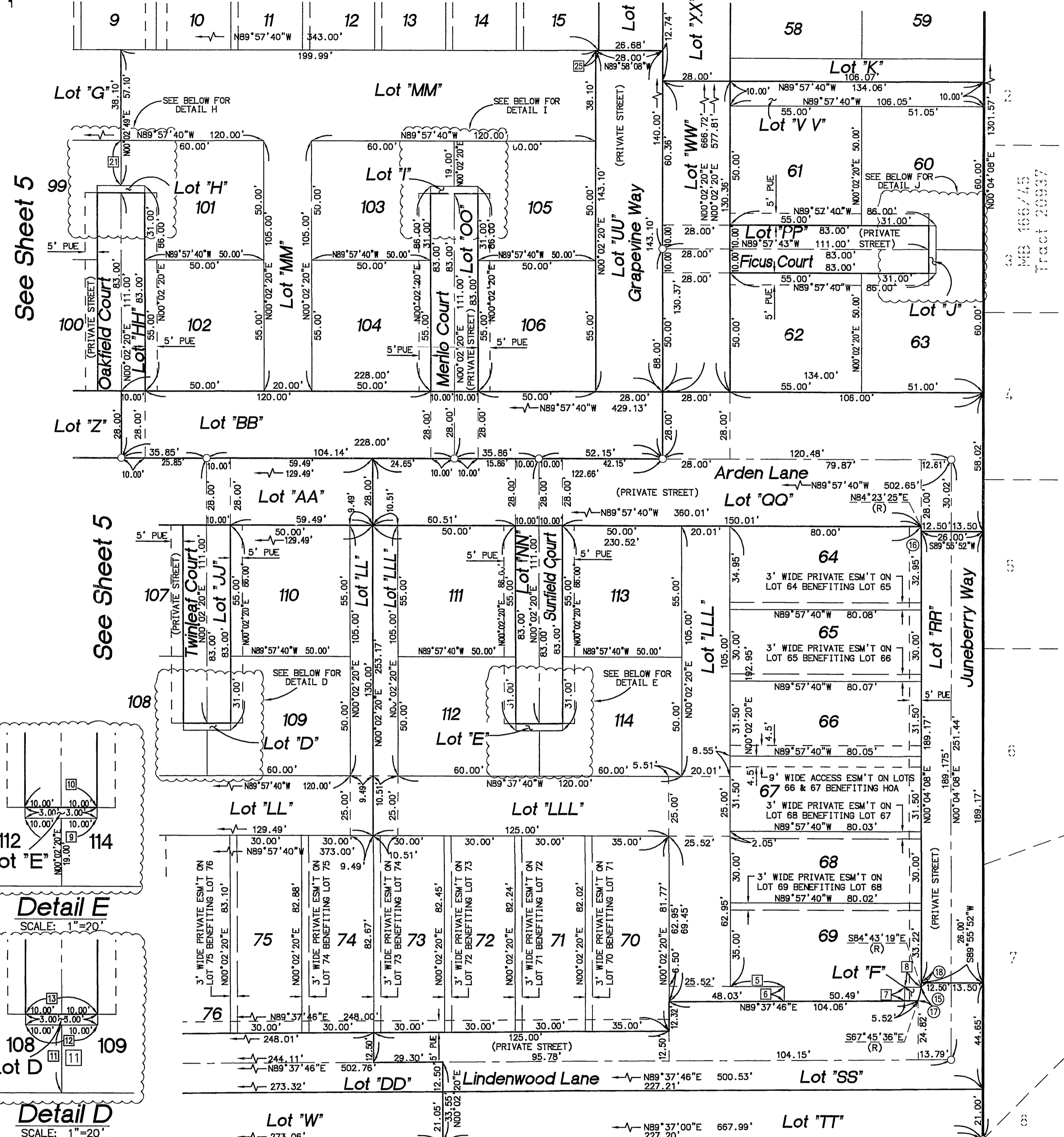
Sheet 6 Of 9 Sheets

Tract 31755

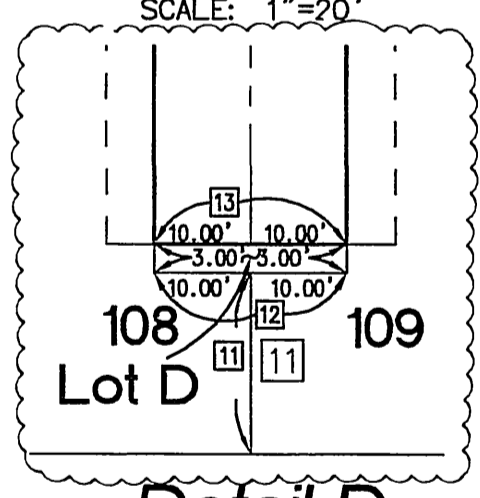
BEING A SUBDIVISION OF A PORTION OF SECTIONS
28 AND 33 OF T.2.S., R.5W., S.B.M.
RENCIVIL - MARCH 2004

See Sheet 3

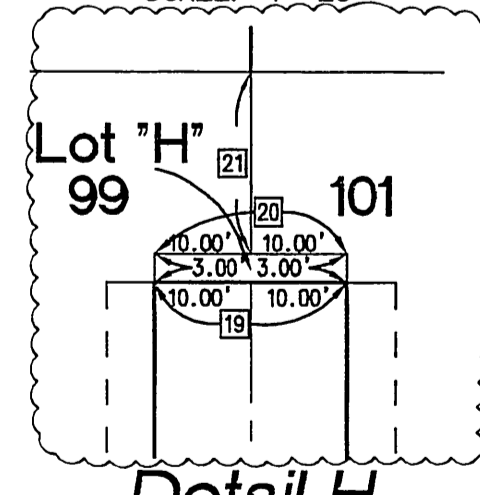
See Sheet 8



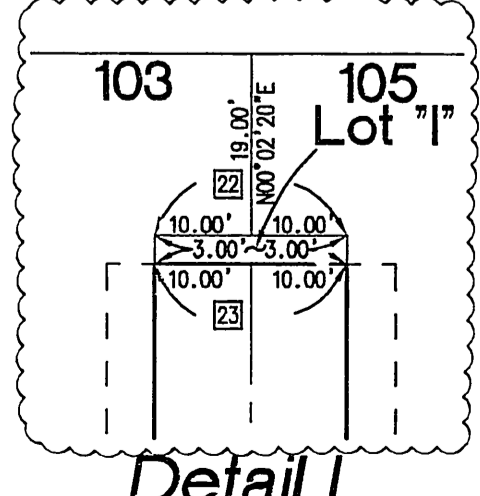
Detail E
SCALE: 1"=20'



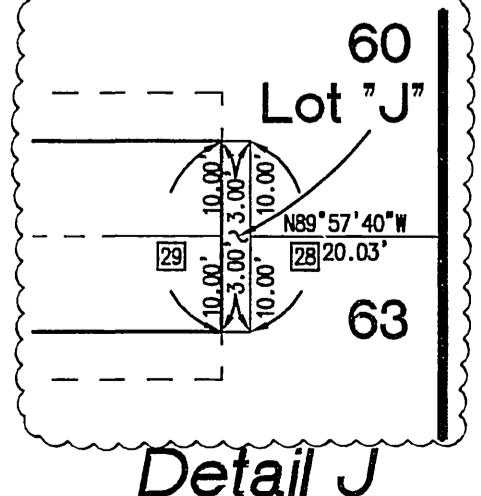
Detail D
SCALE: 1"=20'



Detail H
SCALE: 1"=20'



Detail I
SCALE: 1"=20'



Detail J
SCALE: 1"=20'

CURVE DATA				
Δ	DELTA/BRG	RADIUS	LENGTH	REMARK
15	Δ= 22° 11' 19"	20.00'	7.73'	
16	Δ= 05° 38' 51"	20.00'	2.01'	
17	Δ= 16° 58' 32"	20.00'	5.91'	
18	Δ= 35° 14' 21"	20.00'	1.82'	

SURVEYOR'S NOTES
SEE SHEET 3 FOR ALL
STREET AND HOA LOT
INDEX
SEE SHEET 4 FOR ALL
EASEMENT NOTES

LINE DATA				
Δ	DELTA/BRG	RADIUS	LENGTH	REMARK
5	N89° 55' 52" W	---	22.51'	
6	N00° 04' 08" E	---	6.15'	
7	N00° 04' 08" E	---	5.76'	
8	N89° 55' 52" W	---	6.92'	
9	N89° 57' 40" W	---	20.00'	
10	N89° 57' 40" W	---	20.00'	
11	N00° 02' 20" E	---	19.00'	
12	N89° 57' 40" W	---	20.00'	
13	N89° 57' 40" W	---	20.00'	
19	N89° 57' 40" W	---	20.00'	
20	N89° 57' 40" W	---	20.00'	
21	N00° 02' 20" E	---	19.00'	
22	N89° 57' 40" W	---	20.00'	
23	N89° 57' 40" W	---	20.00'	
25	N89° 57' 40" W	---	1.33'	
28	N00° 02' 20" E	---	20.00'	
29	N00° 02' 20" E	---	20.00'	

City 394 / 38

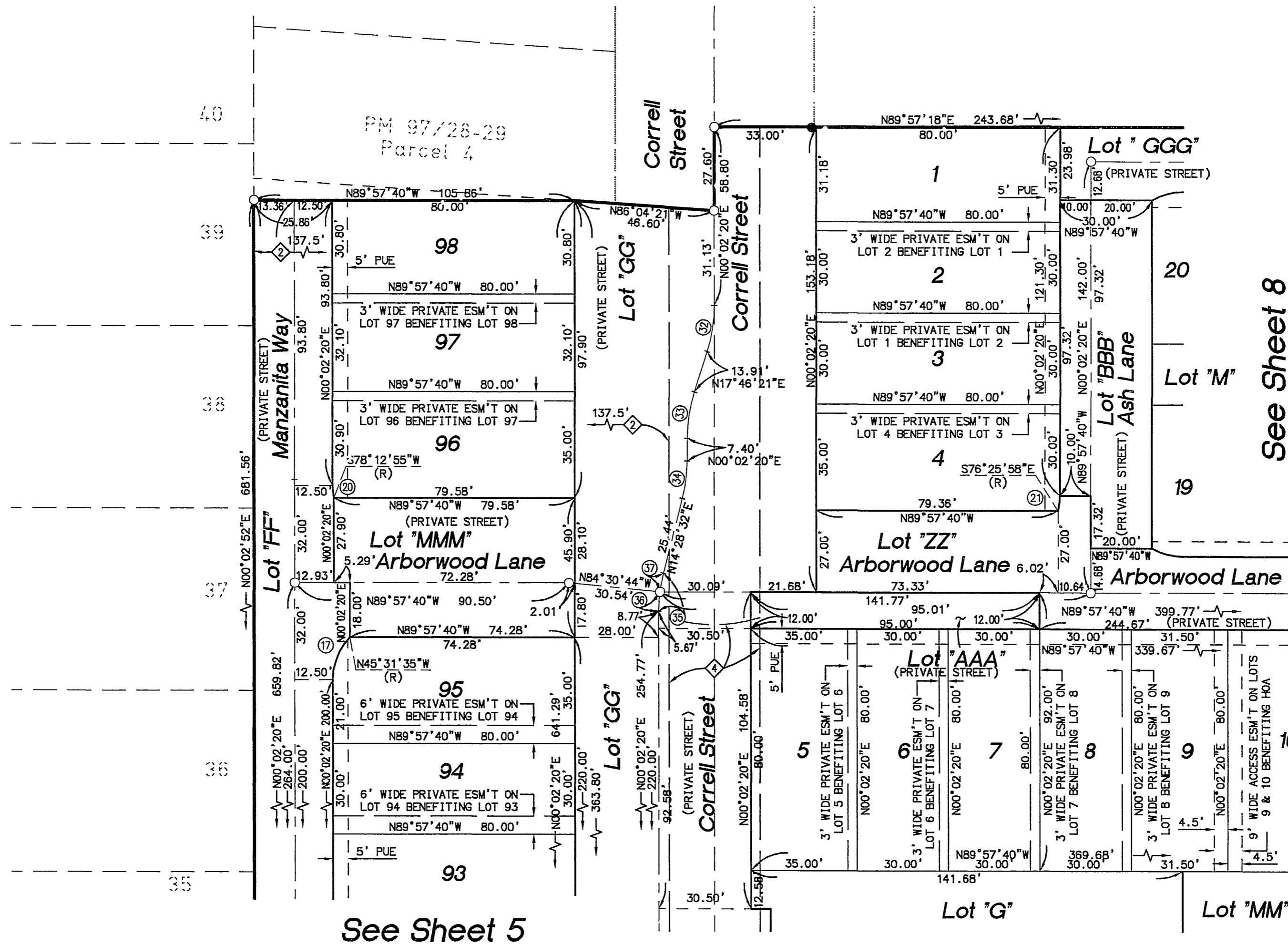
Scale: 1"=30'

IN THE CITY OF RIVERSIDE, COUNTY OF RIVERSIDE,
STATE OF CALIFORNIA

Sheet 7 Of 9 Sheets

Tract 31755

BEING A SUBDIVISION OF A PORTION OF SECTIONS
28 AND 33 OF T.2.S., R.5W., S.B.M.
RENCIVIL - MARCH 2004



CURVE DATA				
○	DELTA/BRG	RADIUS	LENGTH	REMARK
17	Δ= 44° 24' 19"	20.00'	15.51'	" "
20	Δ= 11° 49' 22"	20.00'	4.13'	" "
21	Δ= 12° 34' 45"	23.00'	5.05'	" "
32	Δ= 17° 43' 59"	50.00'	15.47'	" "
33	Δ= 17° 44' 01"	50.00'	15.48'	" "
34	Δ= 14° 26' 12"	50.00'	12.60'	" "
35	Δ= 14° 26' 12"	50.00'	12.60'	" "
36	Δ= 07° 16' 35"	50.00'	6.35'	" "
37	Δ= 07° 09' 37"	50.00'	6.25'	" "

SURVEYORS'S NOTES
 SEE SHEET 3 FOR ALL
 STREET AND HOA LOT
 INDEX
 SEE SHEET 4 FOR ALL
 EASEMENT NOTES

Scale: 1"=30'

IN THE CITY OF RIVERSIDE, COUNTY OF RIVERSIDE, STATE OF CALIFORNIA

Sheet 8 Of 9 Sheets

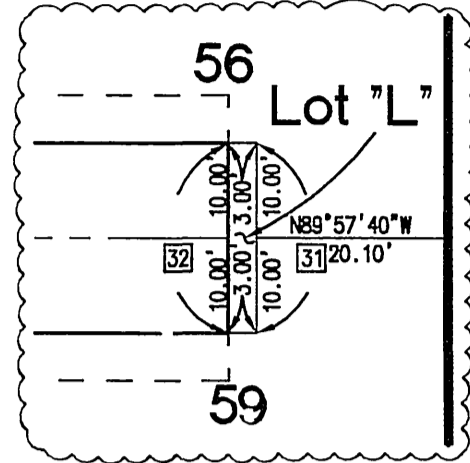
Tract 31755

BEING A SUBDIVISION OF A PORTION OF SECTIONS 28 AND 33 OF T.2.S., R.5W., S.B.M. RENCIVIL - MARCH 2004

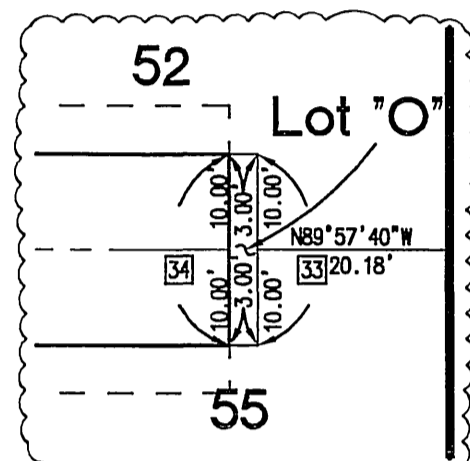
CURVE DATA				
Δ	DELTA/BRG	RADIUS	LENGTH	REMARK
5	38° 51' 18"	33.00'	22.38'	"
6	38° 49' 28"	32.50'	22.02'	"
7	51° 08' 42"	32.50'	29.01'	"
19	09° 35' 18"	20.00'	3.35'	"
22	30° 00' 00"	20.00'	10.47'	"
23	30° 00' 00"	20.00'	10.47'	"
24	05° 44' 21"	20.00'	2.00'	"
25	05° 44' 21"	20.00'	2.00'	"
26	05° 44' 21"	20.00'	2.00'	"
27	07° 11' 23"	16.00'	2.01'	"
28	11° 59' 08"	20.00'	4.18'	"

LINE DATA				
Δ	DELTA/BRG	RADIUS	LENGTH	REMARK
31	N00° 02' 20" E		20.00'	"
32	N00° 02' 20" E		20.00'	"
33	N00° 02' 20" E		20.00'	"
34	N00° 02' 20" E		20.00'	"
35	N00° 02' 20" E		20.00'	"
36	N00° 02' 20" E		20.00'	"
37	N38° 53' 38" E		13.45'	"
38	N38° 53' 38" E		13.45'	"
39	N51° 06' 22" W		10.19'	"
40	N00° 02' 20" E		20.00'	"
41	N00° 02' 20" E		20.00'	"
43	N89° 57' 40" W		11.27'	"

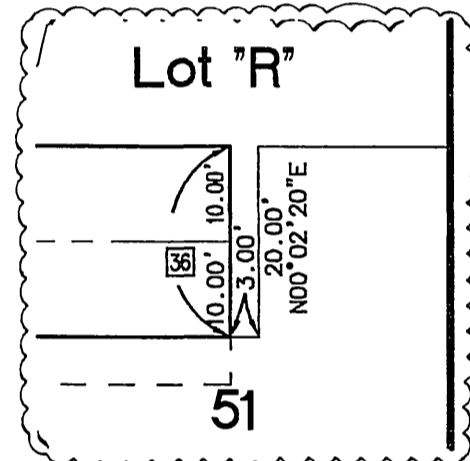
SURVEYORS' NOTES
SEE SHEET 3 FOR ALL STREET AND HOA LOT INDEX
SEE SHEET 4 FOR ALL EASEMENT NOTES



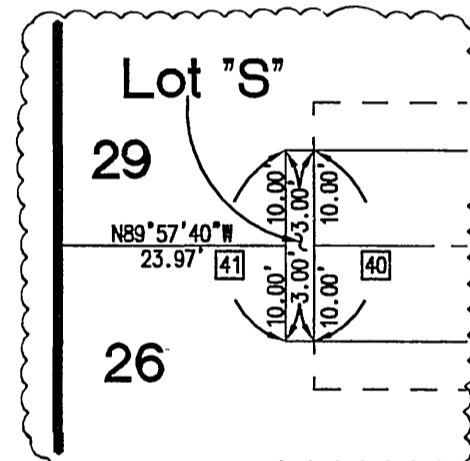
Detail L
SCALE: 1"=20'



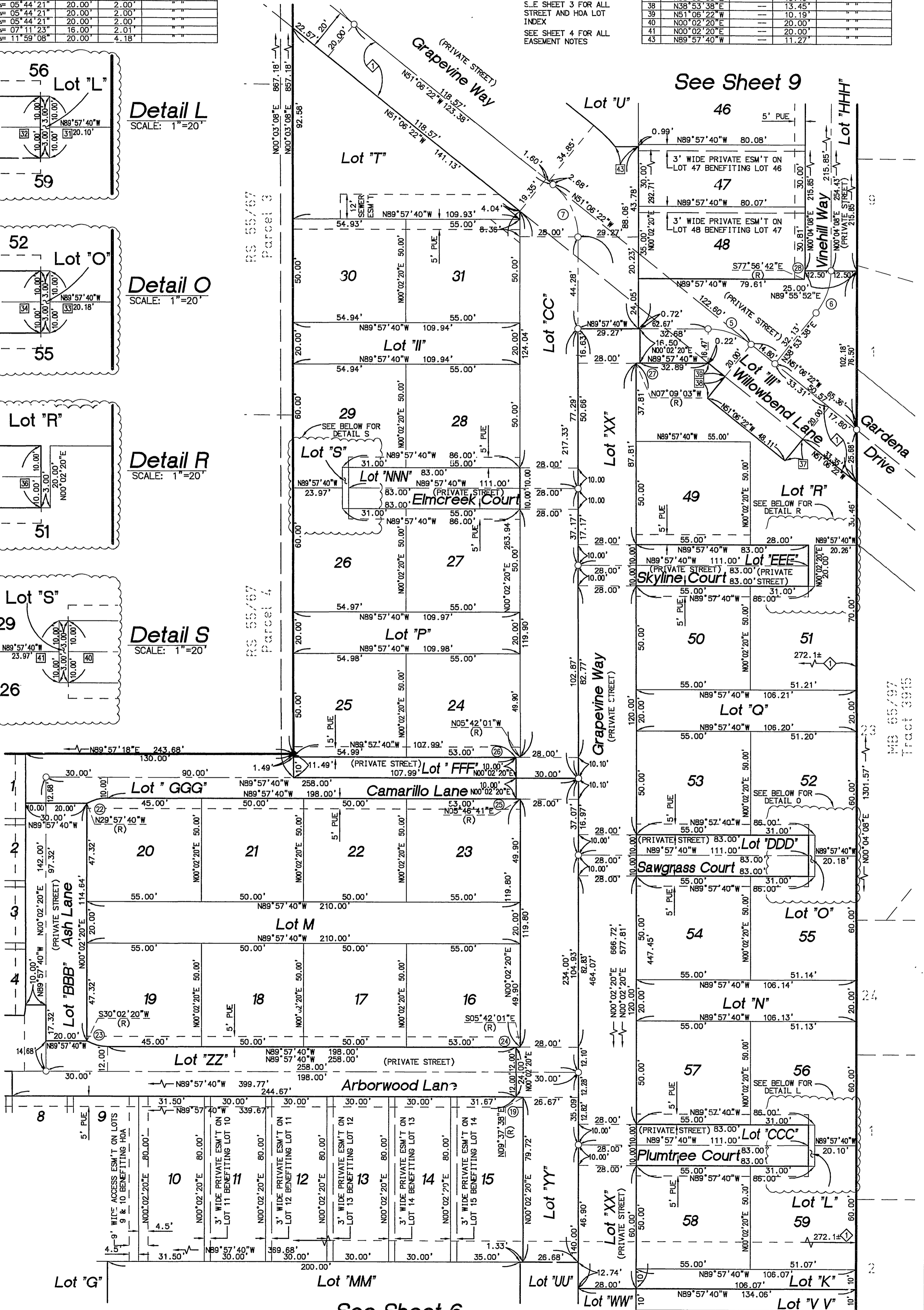
Detail O
SCALE: 1"=20'



Detail R
SCALE: 1"=20'



Detail S
SCALE: 1"=20'



See Sheet 9

See Sheet 7

See Sheet 6

M.B. 65797
Tract 3915

City

Scale: 1"=30'

IN THE CITY OF RIVERSIDE, COUNTY OF RIVERSIDE,
STATE OF CALIFORNIA

Sheet 9 Of 9 Sheets

Tract 31755

BEING A SUBDIVISION OF A PORTION OF SECTIONS
28 AND 33 OF T.2.S., R.5W., S.B.M.
RENCIVIL - MARCH 2004

CURVE DATA				
Δ	DELTA/BRG	RADIUS	LENGTH	REMARK
8	51°08'42"	32.50'	29.01'	"
9	17°56'31"	32.50'	10.18'	"
10	20°22'21"	32.50'	11.56'	"
11	38°18'52"	32.50'	21.73'	"
12	38°18'52"	32.50'	21.73'	"
28	12°20'54"	68.00'	14.66'	"
30	26°44'38"	20.00'	9.34'	"
31	31°37'09"	20.03'	11.05'	"

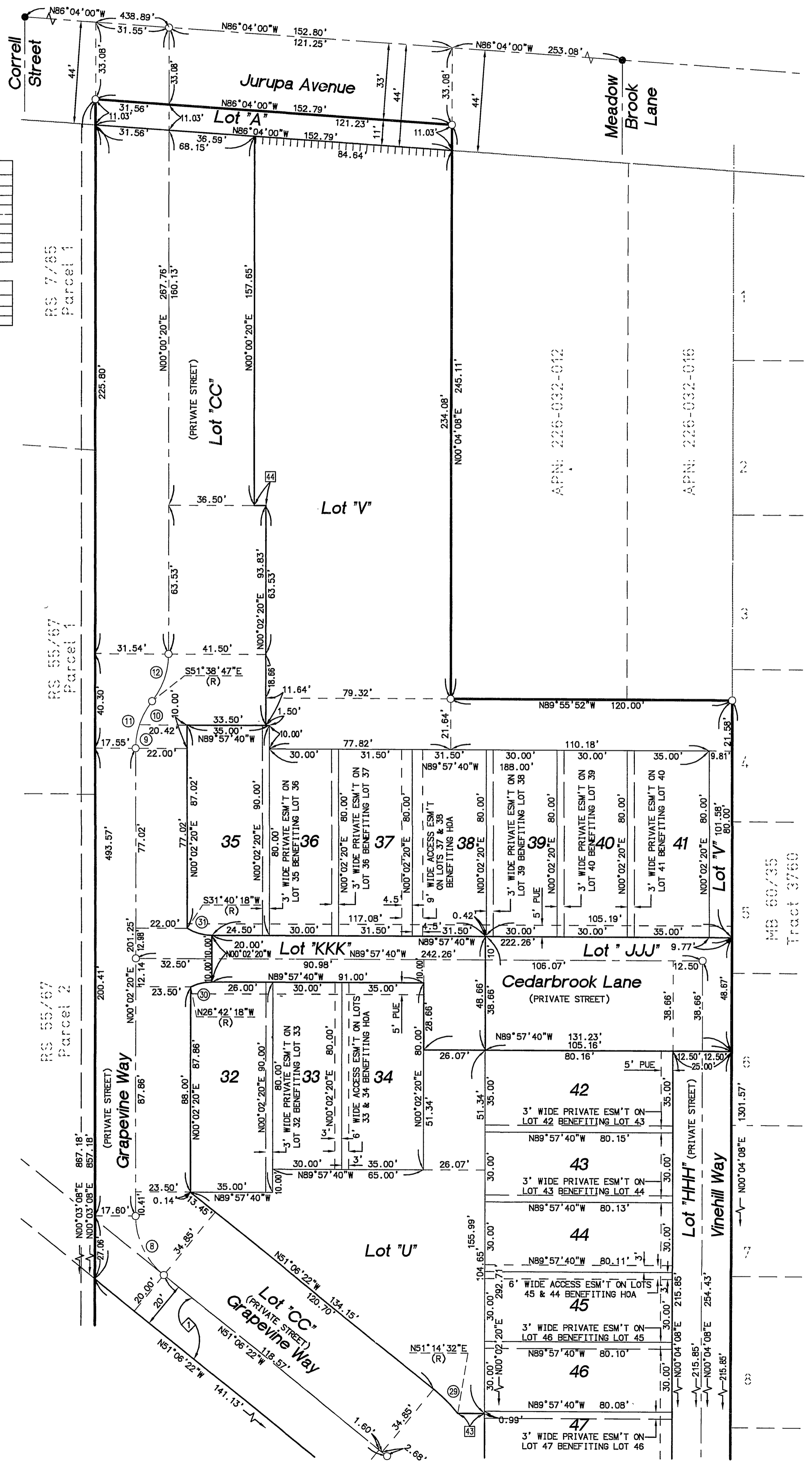
LINE DATA				
Δ	DELTA/BRG	RADIUS	LENGTH	REMARK
44	N89°57'41"W	--	5.00'	"
43	N89°57'40"W	--	11.27'	"

SURVEYORS'S NOTES

SEE SHEET 3 FOR ALL
STREET AND HOA LOT
INDEX

SEE SHEET 4 FOR ALL
EASEMENT NOTES

||||| ACCESS RIGHTS
RESTRICTED



See Sheet 8