

CONDUCTOR TABLE

CONTROL FUNCTION	CONDUCTORS	CONDUCTOR RUNS								
		1	2	3	4	5	8	8	2	1
VEHICLE & PEDESTRIAN HEADS, PEDESTRIAN PUSH BUTTONS, SPARES & COMMONS	12 WIRE IMSA	1	2	3	4	5	8	8	2	1
	3 WIRE IMSA	1	2	3	4	5	8	8	2	1
DETECTOR CABLE	#16/2									
PHASE 1		1	1	1	1	1	1	1		
PHASE 2						2	2	2		
PHASE 3							1	1	1	
PHASE 4				2	2	2	2	2		
PHASE 5						1	1	1		
PHASE 6		2	2	2	2	2	2	2		
PHASE 7				1	1	1	1	1		
PHASE 8						3	3	3		
I.I.S.N.S.	#12		2	2	2	2			2	2
LUMINAIRES	#8		2	2	2	2			2	2
SIGNAL SERVICE	#6									
INTERCONNECT	6PR#19									
VEHICLE PREEMPTION	#20					2	2	4	4	
CONDUIT SIZE		3"	3"	3"	3"	3"	2-3"	2-4"	3"	

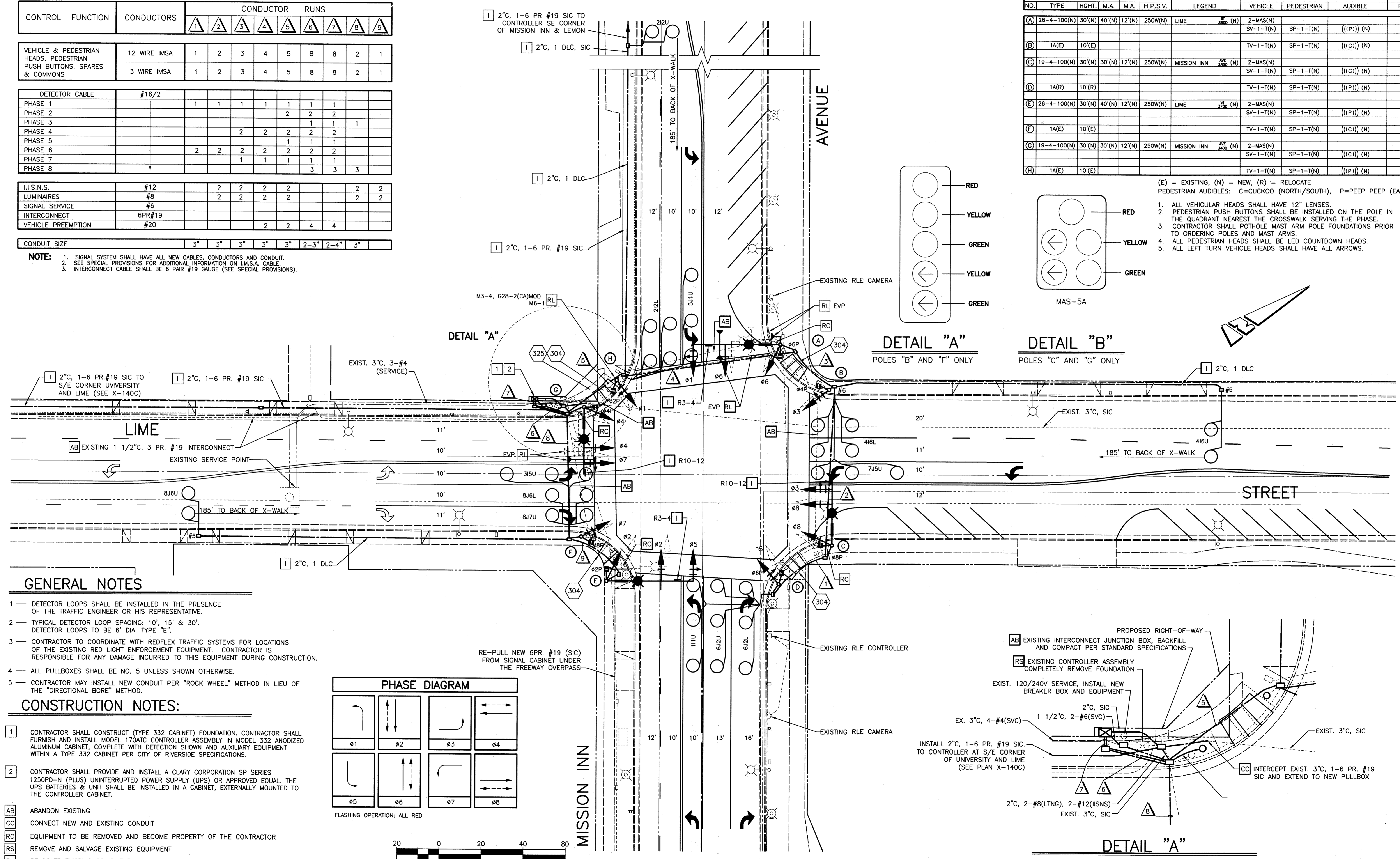
NOTE:
 1. SIGNAL SYSTEM SHALL HAVE ALL NEW CABLES, CONDUCTORS AND CONDUIT.
 2. SEE SPECIAL PROVISIONS FOR ADDITIONAL INFORMATION ON I.M.S.A. CABLE.
 3. INTERCONNECT CABLE SHALL BE 6 PAIR #19 GAUGE (SEE SPECIAL PROVISIONS).

EQUIPMENT SCHEDULE

NO.	SIGNAL STANDARD TYPE	HIGHT	M.A.	LUMINAIRE M.A.	H.P.S.V.	I.I.S.N.S. LEGEND	SIGNAL MOUNTINGS			PPB PHASE
							VEHICLE	PEDESTRIAN	AUDIBLE	
(A)	26-4-100(N)	30'(N)	40'(N)	12'(N)	250W(N)	LIME	2-MAS(N) SV-1-T(N)	SP-1-T(N)	((IPI)) (N)	4(N)
(B)	1A(E)	10'(E)					TV-1-T(N)	SP-1-T(N)	((ICI)) (N)	6(N)
(C)	19-4-100(N)	30'(N)	30'(N)	12'(N)	250W(N)	MISSION INN	2-MAS(N) SV-1-T(N)	SP-1-T(N)	((ICI)) (N)	6(N)
(D)	1A(R)	10'(R)					TV-1-T(N)	SP-1-T(N)	((IPI)) (N)	8(N)
(E)	26-4-100(N)	30'(N)	40'(N)	12'(N)	250W(N)	LIME	2-MAS(N) SV-1-T(N)	SP-1-T(N)	((IPI)) (N)	8(N)
(F)	1A(E)	10'(E)					TV-1-T(N)	SP-1-T(N)	((ICI)) (N)	2(N)
(G)	19-4-100(N)	30'(N)	30'(N)	12'(N)	250W(N)	MISSION INN	2-MAS(N) SV-1-T(N)	SP-1-T(N)	((ICI)) (N)	2(N)
(H)	1A(E)	10'(E)					TV-1-T(N)	SP-1-T(N)	((IPI)) (N)	4(N)

(E) = EXISTING, (N) = NEW, (R) = RELOCATE
 PEDESTRIAN AUDIBLES: C=CUCKOO (NORTH/SOUTH), P=PEEP PEEP (EAST/WEST)

- ALL VEHICULAR HEADS SHALL HAVE 12" LENSES.
- PEDESTRIAN PUSH BUTTONS SHALL BE INSTALLED ON THE POLE IN THE QUADRANT NEAREST THE CROSSWALK SERVING THE PHASE.
- CONTRACTOR SHALL POTHOLE MAST ARM POLE FOUNDATIONS PRIOR TO ORDERING POLES AND MAST ARMS.
- ALL PEDESTRIAN HEADS SHALL BE LED COUNTDOWN HEADS.
- ALL LEFT TURN VEHICLE HEADS SHALL HAVE ALL ARROWS.

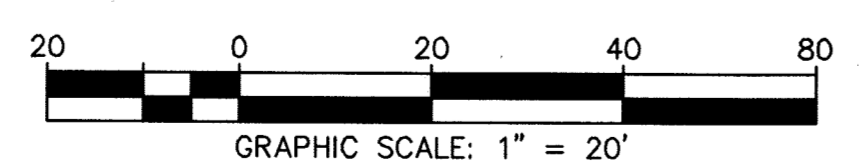
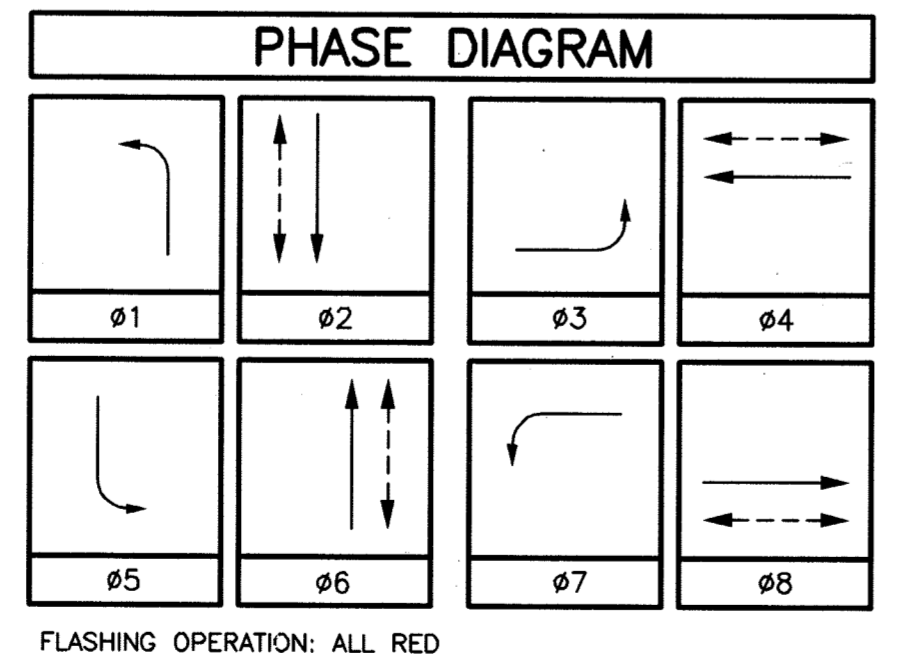


GENERAL NOTES

- DETECTOR LOOPS SHALL BE INSTALLED IN THE PRESENCE OF THE TRAFFIC ENGINEER OR HIS REPRESENTATIVE.
- TYPICAL DETECTOR LOOP SPACING: 10', 15' & 30'. DETECTOR LOOPS TO BE 6" DIA. TYPE "E".
- CONTRACTOR TO COORDINATE WITH REDFLEX TRAFFIC SYSTEMS FOR LOCATIONS OF THE EXISTING RED LIGHT ENFORCEMENT EQUIPMENT. CONTRACTOR IS RESPONSIBLE FOR ANY DAMAGE INCURRED TO THIS EQUIPMENT DURING CONSTRUCTION.
- ALL PULLBOXES SHALL BE NO. 5 UNLESS SHOWN OTHERWISE.
- CONTRACTOR MAY INSTALL NEW CONDUIT PER "ROCK WHEEL" METHOD IN LIEU OF THE "DIRECTIONAL BORE" METHOD.

CONSTRUCTION NOTES:

- CONTRACTOR SHALL CONSTRUCT (TYPE 332 CABINET) FOUNDATION. CONTRACTOR SHALL FURNISH AND INSTALL MODEL 170ATC CONTROLLER ASSEMBLY IN MODEL 332 ANODIZED ALUMINUM CABINET, COMPLETE WITH DETECTION SHOWN AND AUXILIARY EQUIPMENT WITHIN A TYPE 332 CABINET PER CITY OF RIVERSIDE SPECIFICATIONS.
 - CONTRACTOR SHALL PROVIDE AND INSTALL A CLARY CORPORATION SP SERIES 1250PD-N (PLUS) UNINTERRUPTED POWER SUPPLY (UPS) OR APPROVED EQUAL. THE UPS BATTERIES & UNIT SHALL BE INSTALLED IN A CABINET, EXTERNALLY MOUNTED TO THE CONTROLLER CABINET.
- AB** ABANDON EXISTING
CC CONNECT NEW AND EXISTING CONDUIT
RC EQUIPMENT TO BE REMOVED AND BECOME PROPERTY OF THE CONTRACTOR
RS REMOVE AND SALVAGE EXISTING EQUIPMENT
RL RELOCATE EXISTING EQUIPMENT
I INSTALL NEW EQUIPMENT
304 CONSTRUCT WHEELCHAIR RAMP PER CITY OF RIVERSIDE STANDARD DRAWING NO. 304.
325 CONSTRUCT PCC SIDEWALK PER CITY OF RIVERSIDE STANDARD DRAWING NO. 325.
RL - RED LIGHT ENFORCEMENT EQUIPMENT



Under Ground Service Alert of Southern California
 Call: TOLL FREE 1-800-227-2600
 TWO WORKING DAYS BEFORE YOU DIG

ENGINEER IN RESPONSIBLE CHARGE
 GILBERT M. HERNANDEZ
 R.C.E. No. 69170 EXPIRES: 6-30-08
 DATE: 5-2-08

CITY OF RIVERSIDE, CALIFORNIA
 DEPARTMENT OF PUBLIC WORKS

APPROVED BY: *[Signature]*
 PRINCIPAL ENGINEER
 ENGINEERING MANAGER
 TRAFFIC DIVISION
 CONSTRUCTION ADMIN.
 PUBLIC UTILITIES

DATE: 5/14/08

TRAFFIC SIGNAL PLAN
 MISSION INN AVENUE
 AT LIME STREET

SCALE: 1" = 20'

X-141A
 SHEET 1 OF 1
 FILE NAME: X141A.DWG

CONDUCTOR SCHEDULE

CONTROL FUNCTION	CONDUCTORS		Conduit Run										
	SIZE	INSULATION	1	2	3	4	5	6	7	8	9	10	11
Vehicle Heads	#14	T.W.	3	3	3	3	6	6	3	3	3		
ØA													
ØB				3		3	6	6	3	3	3		
Pedestrian Heads													
ØA _w				2		2	4	4	2	2	2		
ØB _w				2	2	2	2	4	4	2	2	2	
F.D. Pre-empt													
Spares				3	3	3	3	3	3	3	3	3	3
120V Common	#10			1	1	1	1	1	1	1	1	1	1
Signal Service	#8												
Luminaire				2	2	2	2	2					
Interconnect	#10								1	2	2		
Interconnect	#10												1
Totals	#14	T.W.	8	13	8	13	23	25	13	13	13		
	#10		1	1	1	1	1	1	1	1	1		
	#8		2	2	2	2	2	2	2	2	2		
	#10												1
Conduit Size			1 1/2"	2"	1 1/2"	2"	2-2"	3"	1 1/2"	2"	1 1/2"	1 1/2"	

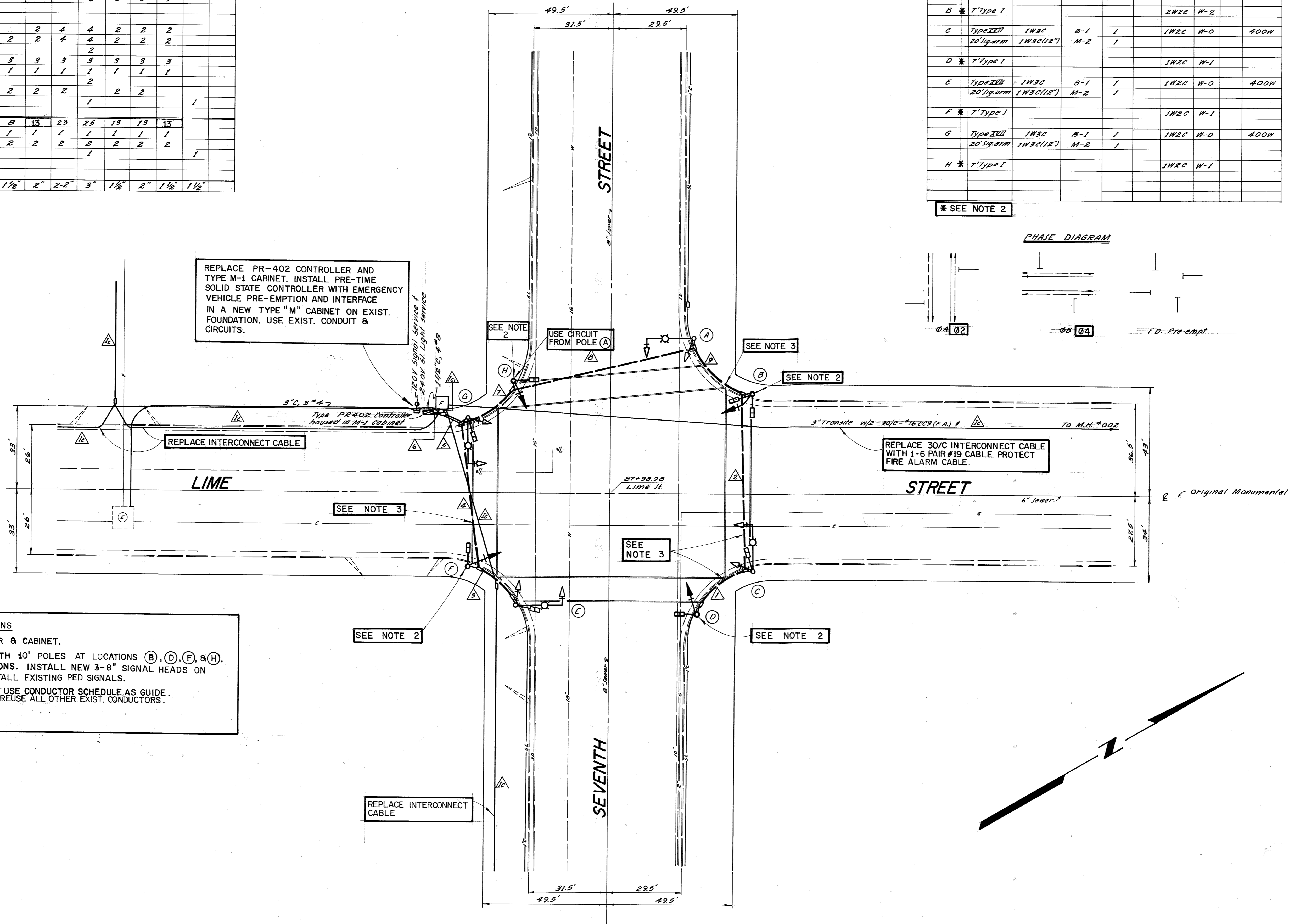
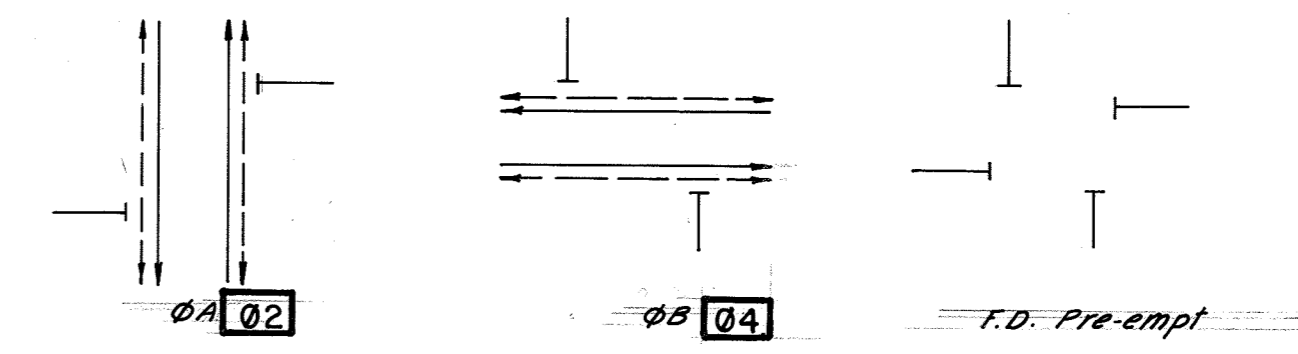
☐ = MODIFICATIONS

EQUIPMENT SCHEDULE

LOCATION	STANDARD	VEHICLE EQUIPMENT			PED. EQUIPMENT			LUMINAIRE
		HEADS	MTG'S	BASE PLATE	LOUVER	HEADS	MTG'S	
A	Type III 20'lg.arm	1W3C	B-1	1				400W
		1W3C(12')	M-2	1				
B *	7' Type I				2W2C	W-2		
C	Type III 20'lg.arm	1W3C	B-1	1	1W2C	W-0		400W
		1W3C(12')	M-2	1				
D *	7' Type I				1W2C	W-1		
E	Type III 20'lg.arm	1W3C	B-1	1	1W2C	W-0		400W
		1W3C(12')	M-2	1				
F *	7' Type I				1W2C	W-1		
G	Type III 20'lg.arm	1W3C	B-1	1	1W2C	W-0		400W
		1W3C(12')	M-2	1				
H *	7' Type I				1W2C	W-1		

* SEE NOTE 2

PHASE DIAGRAM



NOTES - MODIFICATIONS

- REPLACE CONTROLLER & CABINET.
- REPLACE 7' POLES WITH 10' POLES AT LOCATIONS (B), (D), (F), & (H). USE EXIST. FOUNDATIONS. INSTALL NEW 3-8" SIGNAL HEADS ON TV-1 MOUNTINGS. INSTALL EXISTING PED SIGNALS.
- REWIRE INTERSECTION. USE CONDUCTOR SCHEDULE AS GUIDE. ADD Ø4 CONDUCTORS. REUSE ALL OTHER EXIST. CONDUCTORS.

MOHLE, PERRY & ASSOC.
 PREPARED BY: R.H. M.P. 001-9-1980
 DESIGN ENGR. R.C.E. 10692 DATE:

CITY OF RIVERSIDE, CALIFORNIA PUBLIC WORKS DEPARTMENT		TRAFFIC SIGNALS SEVENTH STREET AND LIME STREET		ACCOUNT No. DRAWING NUMBER X-141 SHEET 29 OF 50
APPROVED BY: [Signature]	DATE: 12/18/80	APPROVED BY: [Signature]	DATE: 12/18/80	SCALE: 1" = 20'
PRINCIPAL ENGINEER	BY: [Signature]	TRAFFIC DIVISION	CHIEF PUB. WKS. ENGR.	
PARK DEPARTMENT	DATE: 12/18/80			
DESIGNED BY: [Signature]	DRAWN BY: [Signature]	CHECKED BY: [Signature]		