

CONDUCTOR TABLE

CONTROL FUNCTION	CONDUCTORS	CONDUCTOR RUNS												
		1	2	3	4	5	6	7	8	9	10	11	12	13
VEHICLE & PEDESTRIAN HEADS, PEDESTRIAN PUSH BUTTONS, SPARES & COMMONS	12 CSC 3 CSC	1	2	9	7	1	1	5	2	1	3	2	1	
DETECTOR CABLE	TYPE B				6	6			6			4	4	4
PHASE 2														
PHASE 4		1	1	3	2				2		2	2	4	4
PHASE 5					2	2								
PHASE 6			3	6	3			3						
PHASE 8				3	3	2			1	1				
I.I.S.N.S.	#12	2	2		2				2	2	2	2		
LUMINAIRES	#8	2	2		2				2	2	2	2		
SIGNAL SERVICE	#6			2	2				2	2				
INTERCONNECT	6PR#19													
VEHICLE PREEMPTION	#20/3		1	4	3				3	2	1	1		
FLASHING BEACONS	#10			2	2				2		2	2	2	2
MULTI-POINT RADIO	CAT-5			1	1									
CONDUIT SIZE		2"	2"	2-3"	3.5"	2"	2"	3"	2.5"	2"	2.5"	2"	2"	2"

ALL CONDUIT ARE EXISTING, PROTECT IN PLACE.
CONTRACTOR SHALL REWIRE INTERSECTIONS WITH NEW IMSA CABLE.

EQUIPMENT SCHEDULE

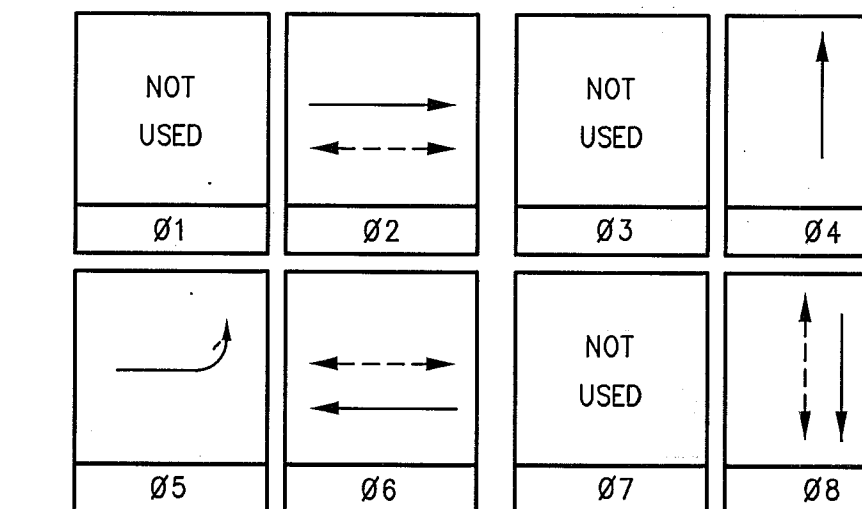
No.	TYPE	STANDARD		LUMINAIRE H.P.S.	IISNS LEGEND	SIGNAL MOUNTING			PPB PHASE	REMARKS			
		HGT.	SIG. M.A.			LUM. M.A.	VEHICLE	PED			AUDIBLE		
A	19-2-80	30'	30'	12'	250W	Primer	St. 1100	MAS	SV-1-T	SP-1-T	((C))	3	
B	1A	10'	-	-	-	-	-	-	TV-1-T	SP-1-T	((P))	4	
C	1A	10'	-	-	-	-	-	-	TV-2-T	SP-1-T	((P))	6	
D	24-4-80	30'	35'	12'	250W	Primer	St. 1100	2-MAS	SV-1-T	-	-	-	-
E	16-2-80	30'	20'	-	-	Columbia	Av. 3200	MAS	SV-1-T	SP-1-T	((C))	3	
F	19-2-80	30'	25'	12'	250W	Mulberry	St. 1200	MAS	SV-1-T	SP-1-T	((P))	6	
G	1A	10'	-	-	-	-	-	-	TV-1-T	-	-	2	
H	1A	10'	-	-	-	-	-	-	TV-1-T	SP-1-T	((P))	2	
I	19-2-80	30'	25'	12'	250W	Mulberry	St. 1200	MAS	SV-1-T	-	-	-	-
J	16-2-80	17'	15'	-	250W	Columbia	Av. 3300	MAS	SV-1-T	-	-	-	-

PEDESTRIAN AUDIBLES: C=CUCKOO (NORTH/SOUTH), P=PEEP PEEP (EAST/WEST)
ALL EQUIPMENT EXISTING, PROTECT IN PLACE

CONSTRUCTION NOTES:

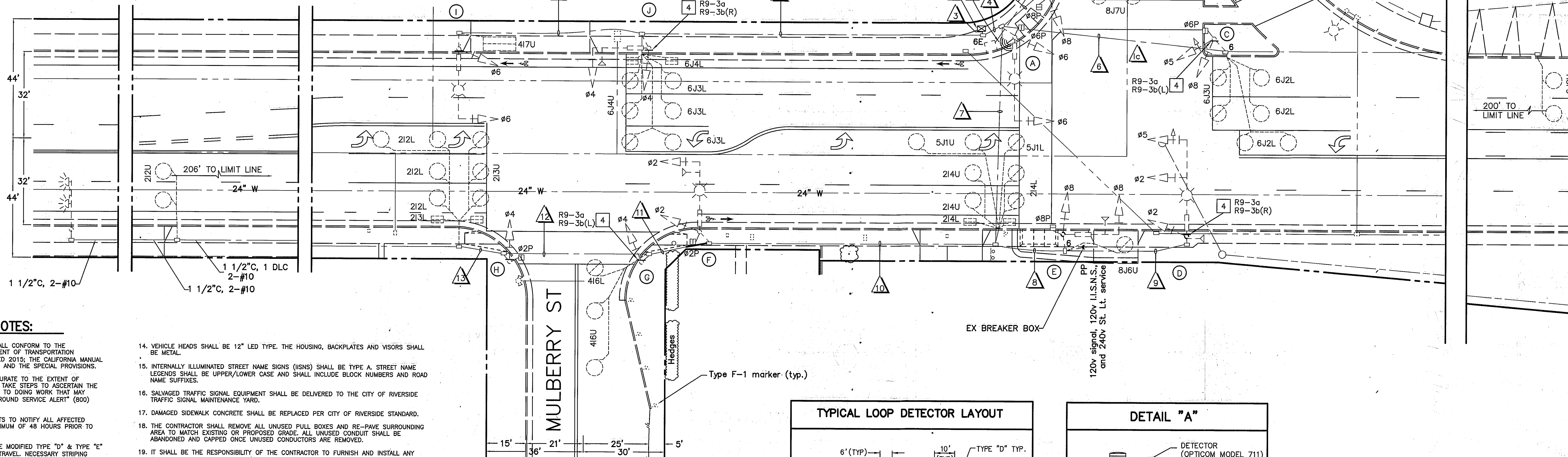
- REMOVE AND SALVAGE EXISTING TYPE 90 CONTROLLER ASSEMBLY. FURNISH AND INSTALL MODEL 2070-1C CONTROLLER ASSEMBLY, HOUSED IN A NEW MODEL 333JP CONTROLLER CABINET, ON THE EXISTING TYPE "P" CABINET FOUNDATION. CONTRACTOR SHALL PROVIDE ADDITIONAL 2-CHANNEL DETECTOR CARDS FOR INTENDED OPERATION.
- TRAFFIC LOOPS SHOWN ON PLAN WERE INSTALLED BY A SEPARATE PLAN, PLAN No. XL-775, SHEET No. 3
- THE CONTRACTOR SHALL INSTALL A MOTOROLA POINT-TO-MULTIPOINT 54430 10 MHz SUBSCRIBER MODULE BROADBAND RADIO, MODEL NO. 5490SM10 OR CITY APPROVED EQUAL. RADIO SHALL BE INSTALLED ON POLE A PER THE SPECIAL PROVISIONS. CONTRACTOR SHALL COORDINATE WITH THE CITY OF RIVERSIDE TRAFFIC ENGINEERING SECTION AT 951-826-5104 TO DETERMINE IF THE RADIO WILL PROVIDE PROPER RF PERFORMANCE LEVELS.
- INSTALL SIGN(S) AS NOTED

PHASE DIAGRAM



**FLASHING OPERATION SHALL BE ALL RED.

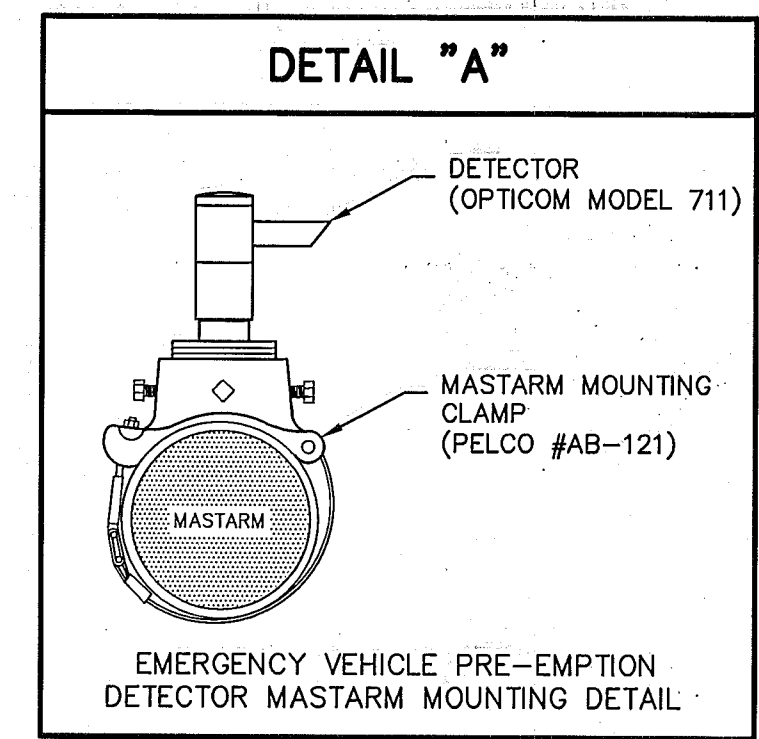
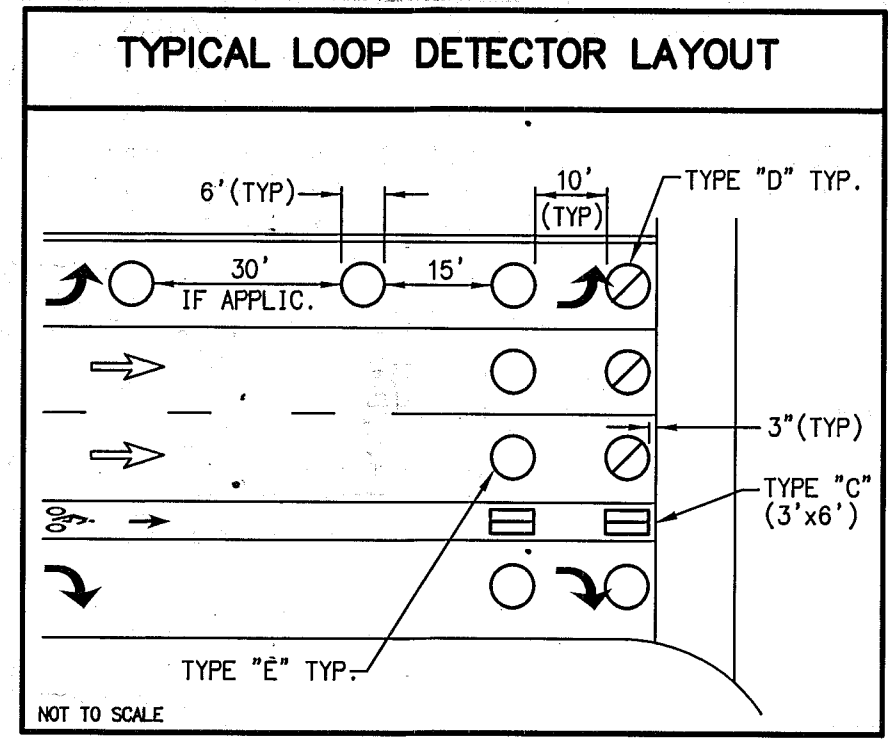
COLUMBIA AVE



TRAFFIC SIGNAL GENERAL NOTES:

- ALL ITEMS FURNISHED AND ALL WORK TO BE DONE SHALL CONFORM TO THE REQUIREMENTS OF THE STATE OF CALIFORNIA, DEPARTMENT OF TRANSPORTATION (CALTRANS) STANDARD PLANS AND SPECIFICATIONS, DATED 2015; THE CALIFORNIA MANUAL ON UNIFORM TRAFFIC CONTROL DEVICES ADOPTED 2014; AND THE SPECIAL PROVISIONS.
- UTILITIES SHOWN ON THE PLAN ARE CORRECT AND ACCURATE TO THE EXTENT OF AVAILABLE RECORDS. THE CONTRACTOR IS REQUIRED TO TAKE STEPS TO ASCERTAIN THE EXACT LOCATION OF ALL KNOWN SUBSTRUCTURES PRIOR TO DOING WORK THAT MAY DAMAGE OR INTERFERE WITH SUCH FACILITIES ("UNDERGROUND SERVICE ALERT" (800) 227-2600).
- THE CONTRACTOR SHALL OBTAIN ALL NECESSARY PERMITS TO NOTIFY ALL AFFECTED AGENCIES AND THE RIVERSIDE UTILITY COMPANIES A MINIMUM OF 48 HOURS PRIOR TO START OF CONSTRUCTION.
- UNLESS SHOWN OTHERWISE, INDUCTIVE LOOPS SHALL BE MODIFIED TYPE "D" & TYPE "E" WITH 10', 15' AND 30' SPACING IN THE DIRECTION OF TRAVEL. NECESSARY STRIPING SHALL BE LOCATED PRIOR TO POSITIONING LOOPS. LOOPS SHALL BE SEALED WITH HOT MELT SEALANT. SEE DETAIL.
- CONDUCTOR SCHEDULE IS FURNISHED AS AN INSTALLATION GUIDELINE ONLY. IT SHALL BE THE CONTRACTOR'S RESPONSIBILITY TO PROVIDE THE CORRECT CONDUCTORS REQUIRED FOR THE INTENDED OPERATION.
- CONDUIT BETWEEN ADJOINING PULL BOXES SHALL BE 2" UNLESS SHOWN OTHERWISE. ALL CONDUIT AND FITTINGS SHALL BE RIGID METAL, UNLESS SHOWN OTHERWISE (BURIED IN A MINIMUM OF 30" OF COVER IN THE STREET AND PARKWAY).
- TRAFFIC SIGNAL INTERCONNECT (SIC) SHALL BE 2" UNLESS SHOWN OTHERWISE, BURIED IN A MINIMUM OF 30" OF COVER IN THE STREET AND PARKWAY. NO. 6 PULL BOXES WITH LIDS LABELED "COMMUNICATIONS" SHALL BE SPACED AT 40' AND THE MAXIMUM SIC BENDING RADIUS SHALL NOT EXCEED 45'. SIC CONDUIT SHALL ONLY INCLUDE SIGNAL INTERCONNECT CONDUCTORS.
- UNDERGROUND SIGNAL CONDUCTORS SHALL NOT BE SPLICED.
- PULL BOXES SHALL BE NO. 6 WITH FIBERLITE LIDS LABELED "TRAFFIC SIGNAL" UNLESS OTHERWISE NOTED ON THE PLAN.
- PULL BOXES SHALL NOT BE LOCATED IN OR WITHIN 1' OF ANY CURB ACCESS RAMP OR DRIVEWAY.
- THE CONTRACTOR SHALL VERIFY WITH THE ENGINEER THE PRECISE FIELD LOCATIONS OF ALL TRAFFIC SIGNAL EQUIPMENT PRIOR TO THE INSTALLATION.
- ALL LANDSCAPING WHICH IS DAMAGED BY CONSTRUCTION ACTIVITIES SHALL BE REPAIRED OR REPLACED TO THE SATISFACTION OF THE CITY AND THE PROPERTY OWNER.
- NEW MAST ARM MOUNTED SIGN SHALL BE FABRICATED WITH 3M DIAMOND GRADE D63 REFLECTIVE SHEETING (ASTM TYPE XI) OR APPROVED EQUAL. SIGNS SHALL BE STANDARD SIZE AND HAVE A MINIMUM SIDE DIMENSION OF 30".
- VEHICLE HEADS SHALL BE 12" LED TYPE. THE HOUSING, BACKPLATES AND VISORS SHALL BE METAL.
- INTERNALLY ILLUMINATED STREET NAME SIGNS (IISNS) SHALL BE TYPE A. STREET NAME LEGENDS SHALL BE UPPER/LOWER CASE AND SHALL INCLUDE BLOCK NUMBERS AND ROAD NAME SUFFIXES.
- SALVAGED TRAFFIC SIGNAL EQUIPMENT SHALL BE DELIVERED TO THE CITY OF RIVERSIDE TRAFFIC SIGNAL MAINTENANCE YARD.
- DAMAGED SIDEWALK CONCRETE SHALL BE REPLACED PER CITY OF RIVERSIDE STANDARD.
- THE CONTRACTOR SHALL REMOVE ALL UNUSED PULL BOXES AND RE-PAVE SURROUNDING AREA TO MATCH EXISTING OR PROPOSED GRADE. ALL UNUSED CONDUIT SHALL BE ABANDONED AND CAPPED ONCE UNUSED CONDUCTORS ARE REMOVED.
- IT SHALL BE THE RESPONSIBILITY OF THE CONTRACTOR TO FURNISH AND INSTALL ANY ADDITIONAL LOAD SWITCHES AND/OR DETECTOR CARDS, IF NECESSARY, FOR THE PROPOSED OPERATION.
- ALL CONTRACTORS WORKING ON OR AROUND THE CITY OF RIVERSIDE'S UNDERGROUND ELECTRICAL FACILITIES MUST HAVE THE PROPERLY QUALIFIED PERSONNEL AND EQUIPMENT TO PERFORM THE SPECIFIED WORK. THE CONTRACTOR WILL BE SOLELY RESPONSIBLE TO ESTABLISH AND MAINTAIN A SAFE WORKING ENVIRONMENT INCLUDING, BUT NOT LIMITED TO WORK AROUND ENERGIZED HIGH VOLTAGE FACILITIES, GAS TESTING OF CONFINED SPACES, TRAFFIC AND PROTECTION.

EVERY ENTRY BY ANY PERSONNEL INTO A PUBLIC UTILITIES HIGH VOLTAGE STRUCTURE WILL REQUIRE THE PRESENCE OF A QUALIFIED ELECTRICAL WORKER IN ACCORDANCE WITH CAL/OSHA. ALL DEVELOPERS AND CONTRACTORS ARE REQUIRED TO SUBMIT REQUIRED DOCUMENTATION AND FOLLOW REQUIRED PROCEDURES. COPIES OF THE POLICY AND DOCUMENTS MAY BE OBTAINED AT 3801 ORANGE ST. RIVERSIDE, CA OR AT WWW.RIVERSIDE.PUBLICUTILITIES.COM



Under Ground Service Alert of Southern California
Call: TOLL FREE 1-800-227-2600
TWO WORKING DAYS BEFORE YOU DIG

ENGINEER IN RESPONSIBLE CHARGE
GILBERT M. HERNANDEZ
R.C.E. No. 69170 EXPIRES: 8-30-20
DATE June 22, 2018

PROFESSIONAL ENGINEER
GILBERT M. HERNANDEZ
No. 69170
Exp. 08-30-20
CIVIL
STATE OF CALIFORNIA

MARK REVISIONS APPR. DATE
DESIGNED BY KS DRAWN BY KS CHECKED BY GMH

CITY OF RIVERSIDE, CALIFORNIA
DEPARTMENT OF PUBLIC WORKS
APPROVED BY: ENGINEERING MANAGER, PRINCIPAL ENGINEER, TRAFFIC DIVISION, CONSTRUCTION ADMIN., PUBLIC UTILITIES
DATE: 6-26-18

TRAFFIC SIGNAL PLAN
COLUMBIA AVE. AT MULBERRY ST. AND PRIMER STREET
SCALE: 1" = 20'

X-229B
SHEET 1 OF 1
FILE NAME: X229B.DWG

