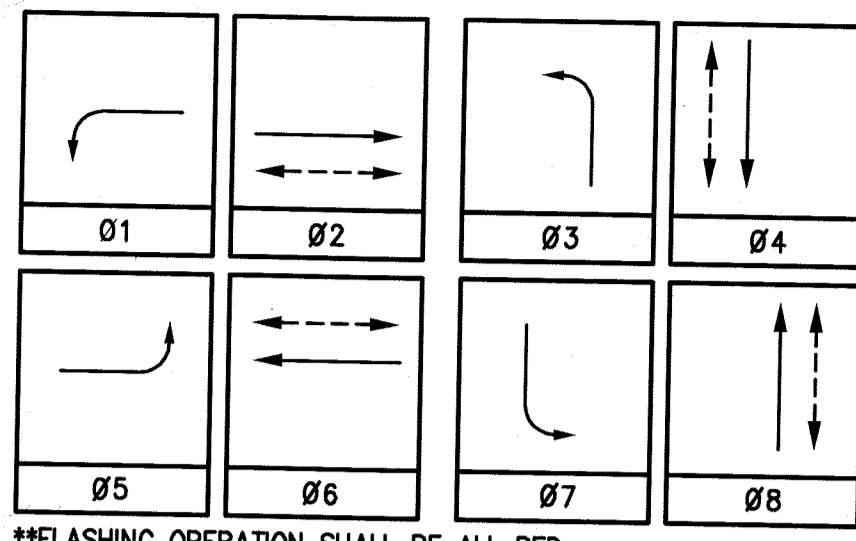


CONDUCTOR TABLE

CONTROL FUNCTION	CONDUCTORS	CONDUCTOR RUNS								
		1	2	3	4	5	6	7	8	
VEHICLE & PEDESTRIAN HEADS, PEDESTRIAN PUSH BUTTONS, SPARES & COMMONS	12 CSC	1	2	3	4	8	3	2	1	
	3 CSC	1	2	3	4	8	3	2	1	
DETECTOR CABLE	#16/2									
PHASE 1						1				
PHASE 2		3	3	3	3	3				
PHASE 3										
PHASE 4						1	1	1		
PHASE 5		1	1	1	1	1				
PHASE 6						3				
PHASE 7						1(N)	1(N)	1(N)		
PHASE 8						1	1	1		
I.I.S.N.S.	#12				1	2	1	1	1	
LUMINAIRES	#8		2	2	2		2	2	2	
SIGNAL SERVICE	#6		2	2	2		2	2	2	
INTERCONNECT	#19					2				
VEHICLE PREEMPTION	#20/4				2	1	1	1	1	
CONDUIT SIZE		2"	3"	3"	3.5"	2-3"	3.5"	3"	2"	1.5"

PHASE DIAGRAM



**FLASHING OPERATION SHALL BE ALL RED.

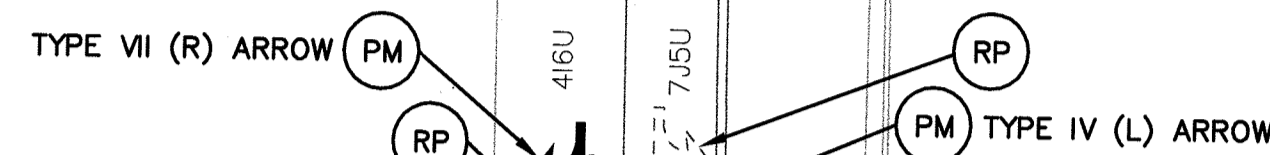
EQUIPMENT SCHEDULE

No.	TYPE	STANDARD	HGT.	SIG.	M.A.	LUM. M.A.	LUMINAIRE H.P.S.	IISNS LEGEND	SIGNAL MOUNTING			PPB PHASE	REMARKS
									VEHICLE	PED	AUDIBLE		
(A)	29-5-129	30'	50'	12'	250W	-	-	2-MAS	SV-1-T	SP-1-T	C	4	
(B)	1A(N)	10'	-	-	-	-	-	TV-1-T(N)	-	SP-1-T(RL)	P	#6(RL)	
(C)	19-4-100(N)	30'	30'	12'	250W(RL)	La Sierra AVE 3300	(RL)	2-MAS(N)	SV-1-T(N)	SP-1-T(RL)	P	#6(RL)	
(D)	1A	10'	-	-	-	-	-	TV-1-T	-	SP-1-T	C	8	
(E)	19-4-129	30'	50'	12'	250W	Vista Terrace 3200	-	2-MAS	SV-1-T	SP-1-T	C	8	
(F)	1A(N)	10'	-	-	-	-	-	TV-1-T(N)	-	SP-1-T(RL)	C	#2(RL)	
(G)	19-4-100(N)	30'	30'	12'	250W(RL)	La Sierra AVE 3300	(RL)	2-MAS(N)	SV-1-T(N)	SP-1-T(RL)	P	#2(RL)	
(H)	1A	10'	-	-	-	-	-	TV-1-T	-	SP-1-T	C	4	

PEDESTRIAN AUDIBLES: C=CUCKOO (NORTH/SOUTH), P=PEEP PEEP (EAST/WEST)

- ALL VEHICULAR HEADS SHALL HAVE 12" LENSES.
- PEDESTRIAN PUSH BUTTONS SHALL BE INSTALLED ON THE POLE IN THE QUADRANT NEAREST THE CROSSWALK SERVING THE PHASE.
- CONTRACTOR SHALL POTHOLE MAST ARM POLE FOUNDATIONS PRIOR TO ORDERING POLES AND MAST ARMS.
- ALL PEDESTRIAN HEADS SHALL BE LED COUNTDOWN HEADS.
- ALL EXISTING IISNS LIGHTING ASSEMBLIES SHALL BE REPLACED WITH NEW LED RETROFIT KIT ASSEMBLIES.
- ALL EQUIPMENT EXISTING UNLESS NOTED, (N)=NEW OR (RL)=RELOCATE

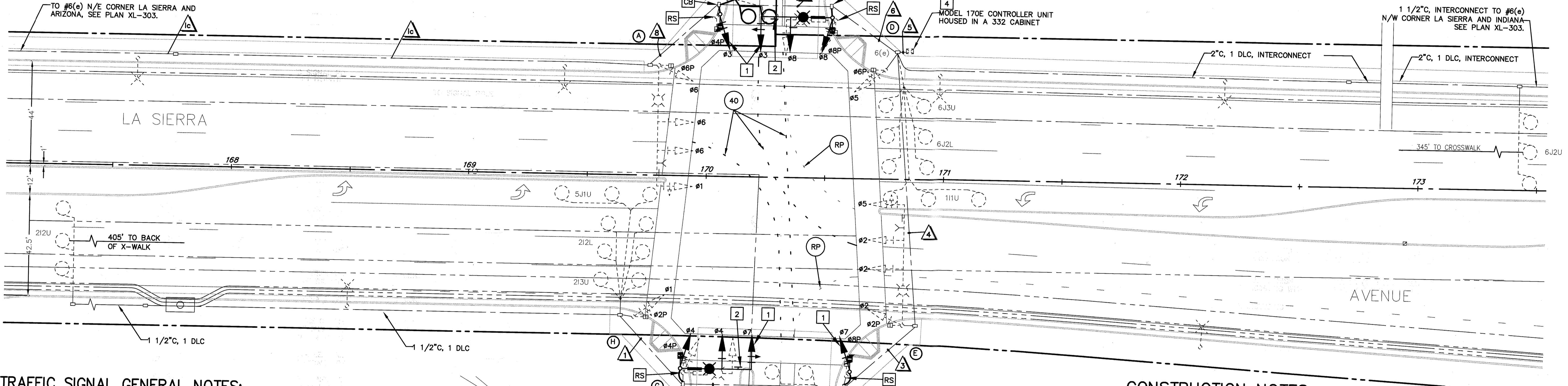
RALPHS ENTRANCE



INSTALL 1 NEW DLC

MODEL 170E CONTROLLER UNIT HOUSED IN A 332 CABINET

1 1/2" C, INTERCONNECT TO #6(e) N/W CORNER LA SIERRA AND INDIANA SEE PLAN XL-303.



TRAFFIC SIGNAL GENERAL NOTES:

- ALL ITEMS FURNISHED AND ALL WORK TO BE DONE SHALL CONFORM TO THE REQUIREMENTS OF: THE STATE OF CALIFORNIA, DEPARTMENT OF TRANSPORTATION (CALTRANS) STANDARD PLANS AND SPECIFICATIONS, DATED 2006; THE CALIFORNIA MANUAL ON UNIFORM TRAFFIC CONTROL DEVICES ADOPTED 2014; AND THE SPECIAL PROVISIONS.
- UTILITIES SHOWN ON THE PLAN ARE CORRECT AND ACCURATE TO THE EXTENT OF AVAILABLE RECORDS. THE CONTRACTOR IS REQUIRED TO TAKE STEPS TO ASCERTAIN THE EXACT LOCATION OF ALL KNOWN SUBSTRUCTURES PRIOR TO DOING WORK THAT MAY DAMAGE OR INTERFERE WITH SUCH FACILITIES ("UNDERGROUND SERVICE ALERT" (800) 227-2600).
- THE CONTRACTOR SHALL OBTAIN ALL NECESSARY PERMITS TO NOTIFY ALL AFFECTED AGENCIES AND THE RIVERSIDE UTILITY COMPANIES A MINIMUM OF 48 HOURS PRIOR TO START OF CONSTRUCTION.
- UNLESS SHOWN OTHERWISE, INDUCTIVE LOOPS SHALL BE MODIFIED TYPE "D" & TYPE "E" WITH 10', 15' AND 30' SPACING IN THE DIRECTION OF TRAVEL. NECESSARY STRIPING SHALL BE LOCATED PRIOR TO POSITIONING LOOPS. LOOPS SHALL BE SEALED WITH HOT MELT SEALANT. SEE DETAIL.
- CONDUCTOR SCHEDULE IS FURNISHED AS AN INSTALLATION GUIDELINE ONLY. IT SHALL BE THE CONTRACTOR'S RESPONSIBILITY TO PROVIDE THE CORRECT CONDUCTORS REQUIRED FOR THE INTENDED OPERATION.
- UNDERGROUND SIGNAL CONDUCTORS SHALL NOT BE SPLICED.
- THE CONTRACTOR SHALL VERIFY WITH THE ENGINEER THE PRECISE FIELD LOCATIONS OF ALL TRAFFIC SIGNAL EQUIPMENT PRIOR TO THE INSTALLATION.
- ALL LANDSCAPING WHICH IS DAMAGED BY CONSTRUCTION ACTIVITIES SHALL BE REPAIRED OR REPLACED TO THE SATISFACTION OF THE CITY AND THE PROPERTY OWNER.
- NEW MAST ARM MOUNTED SIGN SHALL BE FABRICATED WITH 3M DIAMOND GRADE DG3 REFLECTIVE SHEETING (ASTM TYPE XI) OR APPROVED EQUAL. SIGNS SHALL BE STANDARD SIZE AND HAVE A MINIMUM SIDE DIMENSION OF 30".
- VEHICLE HEADS SHALL BE 12" LED TYPE. THE HOUSING, BACKPLATES AND VISORS SHALL BE METAL.
- INTERNALLY ILLUMINATED STREET NAME SIGNS (IISNS) SHALL BE TYPE A. STREET NAME LEGENDS SHALL BE UPPER/LOWER CASE AND SHALL INCLUDE BLOCK NUMBERS AND ROAD NAME SUFFIXES.

- INTERNALLY ILLUMINATED STREET NAME SIGNS (IISNS) SHALL BE TYPE A. STREET NAME LEGENDS SHALL BE UPPER/LOWER CASE AND SHALL INCLUDE BLOCK NUMBERS AND ROAD NAME SUFFIXES.
- SALVAGED TRAFFIC SIGNAL EQUIPMENT SHALL BE DELIVERED TO THE CITY OF RIVERSIDE TRAFFIC SIGNAL MAINTENANCE YARD.
- DAMAGED SIDEWALK CONCRETE SHALL BE REPLACED PER CITY OF RIVERSIDE STANDARD.
- IT SHALL BE THE RESPONSIBILITY OF THE CONTRACTOR TO FURNISH AND INSTALL ANY ADDITIONAL LOAD SWITCHES AND/OR DETECTOR CARDS, IF NECESSARY, FOR THE PROPOSED OPERATION.
- ALL CONTRACTORS WORKING ON OR AROUND THE CITY OF RIVERSIDE'S UNDERGROUND ELECTRICAL FACILITIES MUST HAVE THE PROPERLY QUALIFIED PERSONNEL AND EQUIPMENT TO PERFORM THE SPECIFIED WORK. THE CONTRACTOR WILL BE SOLELY RESPONSIBLE TO ESTABLISH AND MAINTAIN A SAFE WORKING ENVIRONMENT INCLUDING, BUT NOT LIMITED TO WORK AROUND ENERGIZED HIGH VOLTAGE FACILITIES, GAS TESTING OF CONFINED SPACES, TRAFFIC AND PROTECTION.

EVERY ENTRY BY ANY PERSONNEL INTO A PUBLIC UTILITIES HIGH VOLTAGE STRUCTURE WILL REQUIRE THE PRESENCE OF A QUALIFIED ELECTRICAL WORKER IN ACCORDANCE WITH Cal/OSHA. ALL DEVELOPERS AND CONTRACTORS ARE REQUIRED TO SUBMIT REQUIRED DOCUMENTATION AND FOLLOW REQUIRED PROCEDURES. COPIES OF THE POLICY AND DOCUMENTS MAY BE OBTAINED AT 3901 ORANGE ST. RIVERSIDE, CA OR AT WWW.RIVERSIDEPUBLICUTILITIES.COM.

Under Ground Service Alert of Southern California
Call: TOLL FREE 1-800-227-2600
TWO WORKING DAYS BEFORE YOU DIG

ENGINEER IN RESPONSIBLE CHARGE
GILBERT M. HERNANDEZ
R.C.E. No. 69170 EXPIRES: 6-30-18
DATE: 3-23-17

REGISTERED PROFESSIONAL ENGINEER
No. 69170
Exp. 06-30-18
CIVIL
STATE OF CALIFORNIA

DESIGNED BY: MAB DRAWN BY: MAB CHECKED BY: GMH

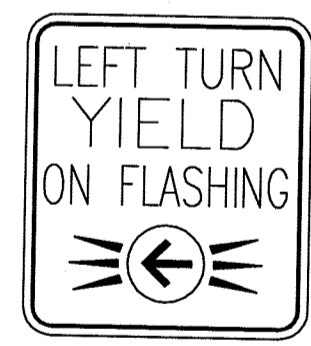
CITY OF RIVERSIDE, CALIFORNIA
DEPARTMENT OF PUBLIC WORKS
APPROVED BY: [Signature] DATE: 3/23/17
ENGINEERING MANAGER
PRINCIPAL ENGINEER
TRAFFIC DIVISION
CONSTRUCTION ADMIN. D.C. 3.31.17

TRAFFIC SIGNAL PLAN
LA SIERRA AVE AND VISTA TERRACE
SCALE: 1" = 20'

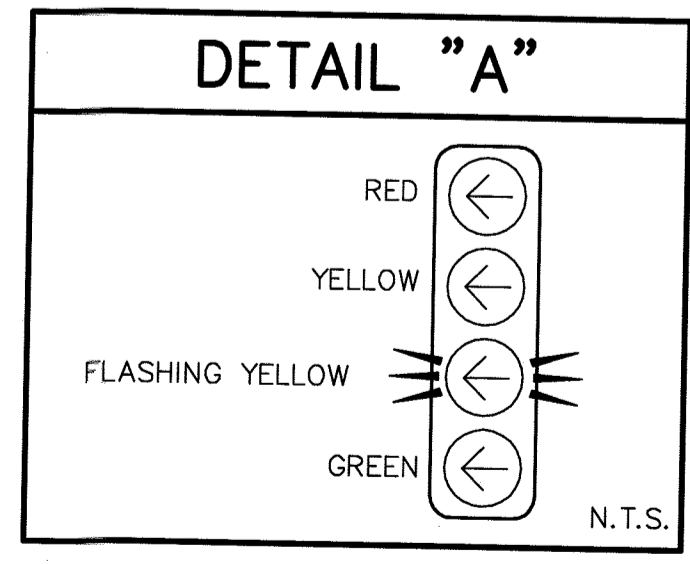
X-277A
SHEET 1 OF 1
FILE NAME: X-277A.DWG

CONSTRUCTION NOTES

- RS REMOVE AND SALVAGE EQUIPMENT TO CITY YARD. REMOVE FOUNDATION COMPLETELY.
- 1 REMOVE AND SALVAGE EXISTING SIGNAL HEAD TO CITY YARD AND INSTALL NEW SIGNAL HEAD PER DETAIL "A"
- 2 REMOVE AND SALVAGE EXISTING R10-12 AND INSTALL R10-12(SPECIAL) SIGN.
- 3 INSTALL 4 TYPE "E" LOOP DETECTORS.
- 4 CONTRACTOR SHALL REMOVE AND SALVAGE 170E CONTROLLER AND FURNISH AND INSTALL A MODEL 2070E CONTROLLER AND FURNISH AN EBERLE DESIGN IN. (EDI) 210ECL CONFLICT MONITOR OR CITY APPROVED EQUAL. INSTALL PAVEMENT MARKING OR ARROW AS NOTED.
- PM INSTALL PAVEMENT MARKING OR ARROW AS NOTED.
- RP REMOVE ALL EXISTING CONFLICTING TRAFFIC STRIPING AND MARKINGS AS NOTED, INCLUDING RAISED PAVEMENT MARKERS.
- # INSTALL CALTRANS STRIPING DETAIL PER NUMBER NOTED, INCLUDING INSTALLATION OF RAISED PAVEMENT MARKERS.



R10-12(SPECIAL)



STRIPING/SIGNAGE QUANTITIES

ITEM	DESCRIPTION	QUANTITY	UNIT
1	DETAIL 40	320	LF
2	PAVEMENT LEGENDS/MARKINGS	84	SF
3	PAVEMENT LEGEND REMOVALS	84	SF
4	DETAIL 40 REMOVALS	125	LF
5	MAST ARM MOUNTED SIGN	2	EA