

EQUIPMENT SCHEDULE

No.	STANDARD TYPE	HGT.	SIG. M.A.	LUM. M.A.	LUMINAIRE LED	IISNS(*) LEGEND	SIGNAL MOUNTING			PPB PHASE	REMARKS
							VEHICLE	PED	AUDIBLE		
A	17A-2-70	35'	20'	10'	400W	MAGNOLIA Ave 10400	1-MAS(RS) SV-1-T(RS)	SP-1-T	((P))	#2	
B	1A	10'	-	-	-	-	1-MAS(N) SV-1-T(N)	SP-1-T	((C))	#4	
C	26A-4-70(RC) 29A-5-100(N)	35'	40'(RC) 50'(N)	15'(RC) 15'(N)	400W(RC) 400W(N)	BANBURY(RL) Dr 3700	2-MAS(RS) SV-1-T(RS) 3-MAS(N) SV-1-T(N)	SP-1-T(RL)	((P))	#4(RS) #4(N)	(RL) EXISTING EWP, PED. HEAD & IISNS TO NEW POLE; (RC) FOUNDATION
D	1A	10'	-	-	-	-	TV-2-T(RS) TV-1-T(N)	SP-1-T	((C))	#6	ROTATE SP-1-T FOR #4
E	19A-2-70	35'	30'	15'	400W	MAGNOLIA Ave 10400	1-MAS(N) SV-2-T(**)	SP-1-T	((P))	#6	
F	26A-4-70	35'	40'	15'	400W(RC) 400W(N)	BANBURY Dr 3700	2-MAS(RS) SV-1-T(RS) 2-MAS(N) SV-1-T(N)	SP-1-T	-	-	
G	1A	10'	-	-	-	-	TV-2-T(RS) TV-1-T(N)	SP-1-T	((P))	#2	

PEDESTRIAN AUDIBLES: C=CUCKOO (NORTH/SOUTH), P=PEEP PEEP (EAST/WEST)
 ALL EQUIPMENT IS EXISTING UNLESS SHOWN (N) = NEW, (RS) = REMOVE AND SALVAGE, (RL) = RELOCATE, (RC) = SEE CONSTRUCTION NOTE BELOW
 (*) = MAST ARM MOUNTED NON-ILLUMINATED REFLECTORIZED STREET NAME SIGNS (MAGNOLIA ONLY)
 (**) = CONTRACTOR SHALL REMOVE AND REPLACE INDIVIDUAL RED, YELLOW, AND GREEN SIGNAL INDICATIONS WITHIN EXISTING SIGNAL HOUSING.

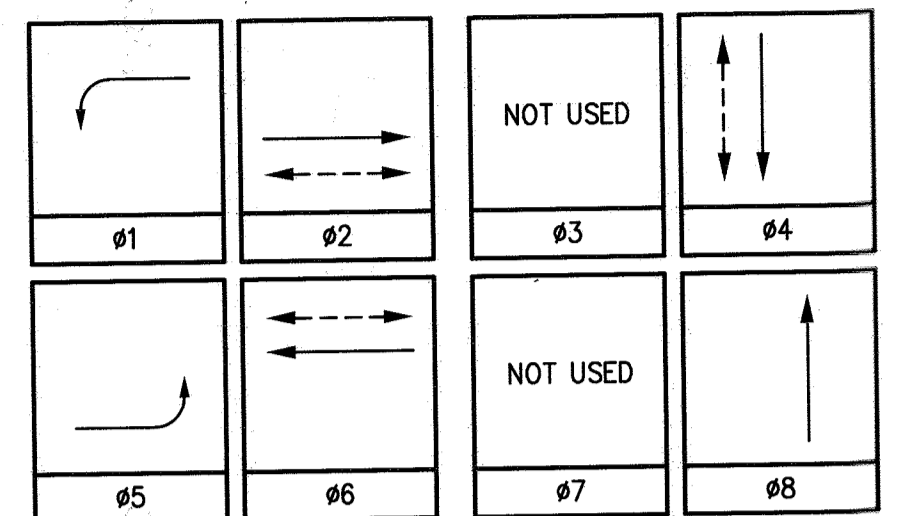
- ALL VEHICLE HEADS SHALL HAVE 12" LENSES.
- ALL EQUIPMENT THAT IS REMOVED SHALL BE SALVAGED TO THE CITY TRAFFIC SIGNAL MAINTENANCE DEPARTMENT.
- CONTRACTOR SHALL POT-HOLE MAST ARM POLE FOUNDATIONS PRIOR TO ORDERING POLES AND MAST ARMS.
- THE EXISTING IISNS LIGHTING ASSEMBLY FOR POLE "C" SHALL BE REPLACED WITH A NEW 400W EQUIVALENT LED RETROFIT KIT ASSEMBLY.
- IF NECESSARY, ADDITIONAL DETECTOR CARDS CAN BE SUPPLIED BY THE CITY TRAFFIC SIGNAL MAINTENANCE DEPARTMENT.
- LUMINAIRES TO BE REMOVED AND REPLACED SHALL BE A CITY APPROVED 400W EQUIVALENT LED ASSEMBLY AND MAST ARM.

CONDUCTOR TABLE

CONTROL FUNCTION	CONDUCTORS	CONDUCTOR RUNS								
		1	2	3	4	5	6	7	8	9
VEHICLE & PEDESTRIAN HEADS, PEDESTRIAN PUSH BUTTONS, SPARES & COMMONS	12 CSC	1	2	2	1	4	1	1	1	7
	3 CSC	1	2	2	1	4	1	1	1	6
DETECTOR CABLE	TYPE B								2	2
PHASE 1										
PHASE 2						4				4
PHASE 3										
PHASE 4			2	2	2					2
PHASE 5						2				2
PHASE 6									4	4
PHASE 7										
PHASE 8								2		2
I.I.S.N.S.	#12		2	2	2	2	2	2	2	
LUMINAIRES	#8		2	2	2	2	2	2	2	
SIGNAL SERVICE	#6						2			2
VEHICLE PRE-EMPTION	#20/3		1	1	2	3				4
COMMUNICATIONS	FIBER OPTIC									1
CONDUIT SIZE		2"(N)	2.5"	2.5"	3"	3"	2"	2"	3"(N)	2-4", 1-2"(N)

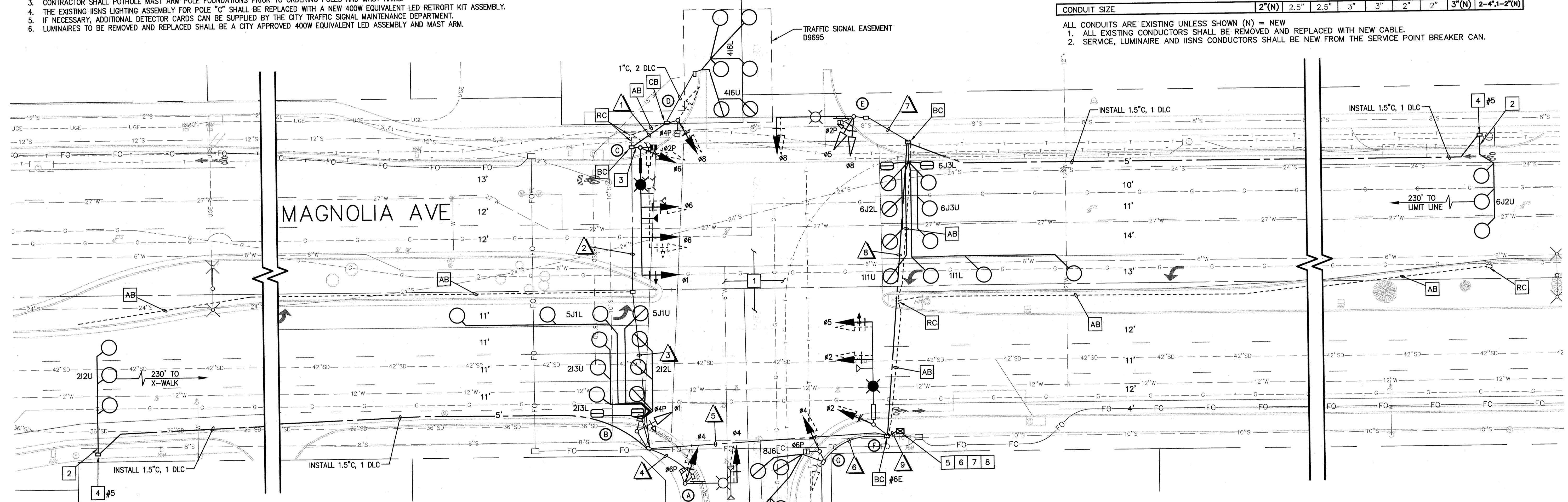
ALL CONDUITS ARE EXISTING UNLESS SHOWN (N) = NEW
 1. ALL EXISTING CONDUCTORS SHALL BE REMOVED AND REPLACED WITH NEW CABLE.
 2. SERVICE, LUMINAIRE AND IISNS CONDUCTORS SHALL BE NEW FROM THE SERVICE POINT BREAKER CAN.

PHASE DIAGRAM



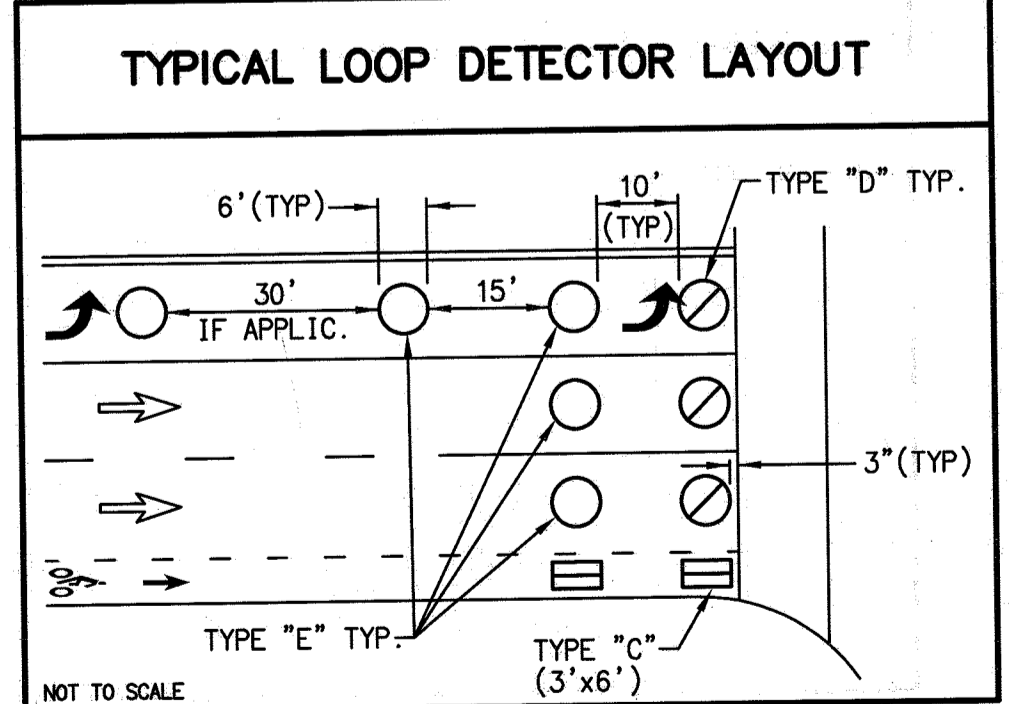
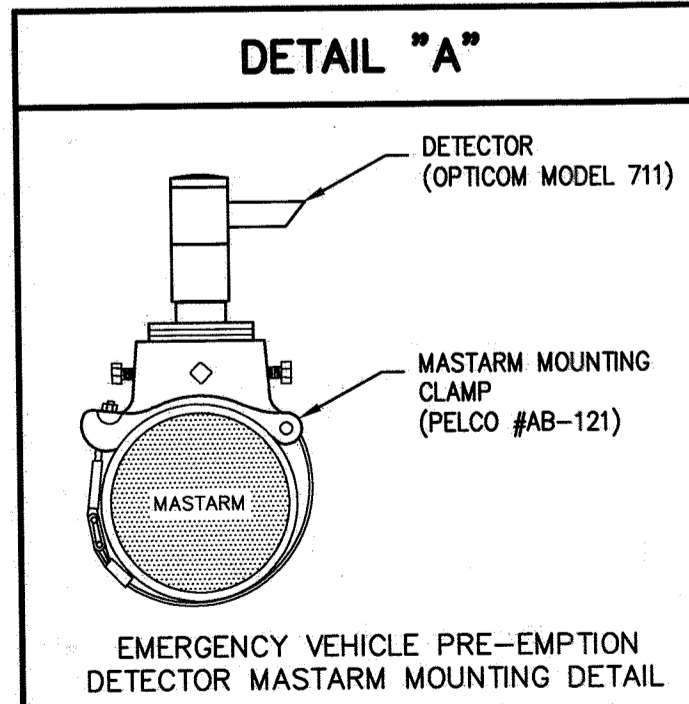
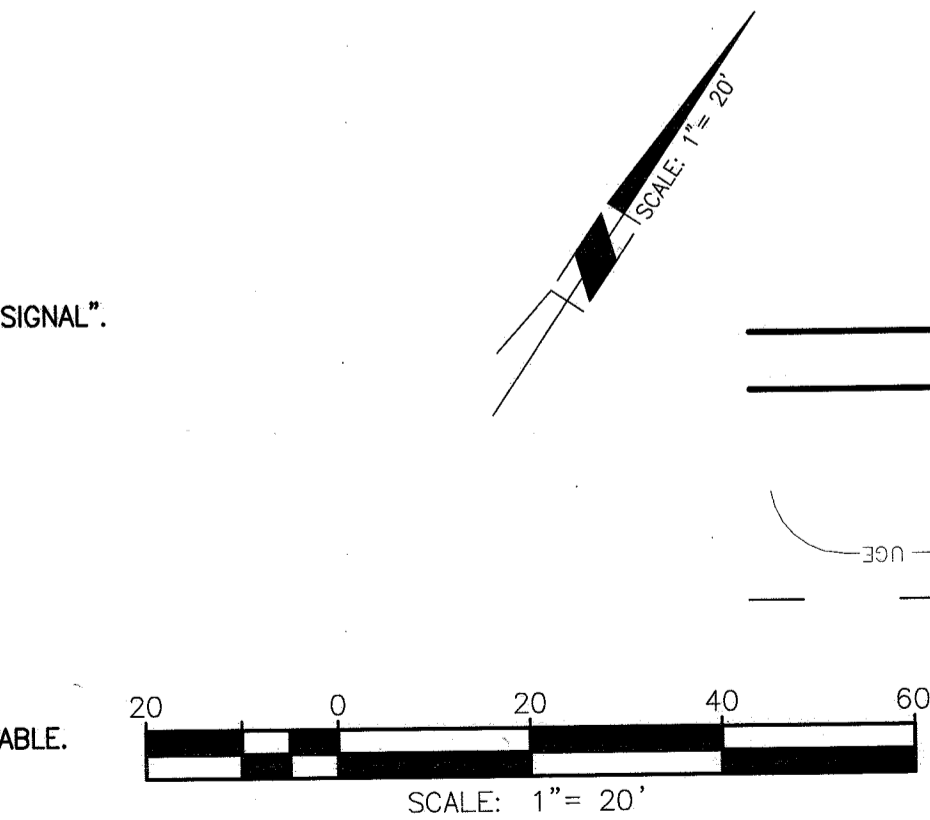
**FLASHING OPERATION SHALL BE ALL RED.

SHOPPING CENTER

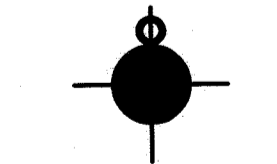


CONSTRUCTION NOTES:

- ALL LOOP DETECTORS SHALL BE NEW. INSTALL PER TYPICAL LOOP DETECTOR LAYOUT DETAIL.
- INSTALL NEW 1.5" CONDUIT.
- INSTALL NEW 2" CONDUIT.
- INSTALL NEW NO. 6 PULL BOX, UNLESS OTHERWISE SPECIFIED, WITH FIBERLITE LID, LABELED "TRAFFIC SIGNAL".
- REMOVE AND SALVAGE EXISTING 170 ATC CONTROLLER ASSEMBLY. FURNISH AND INSTALL A 2070 CONTROLLER ASSEMBLY IN EXISTING 332 CABINET.
- REMOVE AND SALVAGE EXISTING 210 CONFLICT MONITOR. FURNISH AND INSTALL A 210 ECL CONFLICT MONITOR.
- REMOVE AND DISPOSE OF EXISTING DIMENSIONS BBS BATTERIES. FURNISH AND INSTALL 4 NEW ALPHA TECHNOLOGIES 75 AMP BBS BATTERIES COMPATIBLE WITH EXISTING SYSTEM.
- TEMPORARILY REMOVE EXISTING CONTROLLER CABINET OFF TO THE SIDE. REMOVE AND REPLACE THE EXISTING CONTROLLER FOUNDATION AND INSTALL (2) 4" AND (1) 2" PVC CONDUIT TO ADJACENT #6E PULL BOX. RE-INSTALL CABINET AND INSTALL NEW CABLE. RE-SPLICE EXISTING FIBER OPTIC CABLE.
- ABANDON EXISTING IN PLACE. EXISTING CONDUCTORS TO BE REMOVED.
- REMOVE EXISTING PULL BOX AND INSTALL NEW NO. 6 PULL BOX, UNLESS OTHERWISE SPECIFIED, WITH FIBERLITE LID, LABELED "TRAFFIC SIGNAL" IN EXISTING CONDUIT RUN.
- INSTALL NEW CONDUIT IN EXISTING TRAFFIC SIGNAL PULL BOX.
- EXISTING EQUIPMENT OR FOUNDATION TO BE COMPLETELY REMOVED AND DISPOSED OF BY THE CONTRACTOR.
- REMOVE AND SALVAGE EXISTING EQUIPMENT TO THE CITY TRAFFIC SIGNAL MAINTENANCE YARD. SIGNAL POLE FOUNDATIONS MUST BE COMPLETELY REMOVED AND DISPOSED OF BY THE CONTRACTOR.



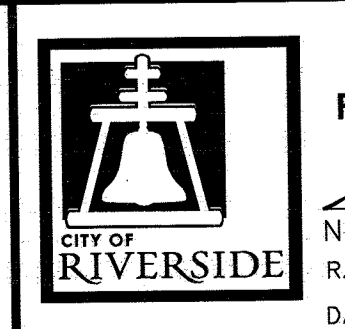
PP# 45-700737H-59



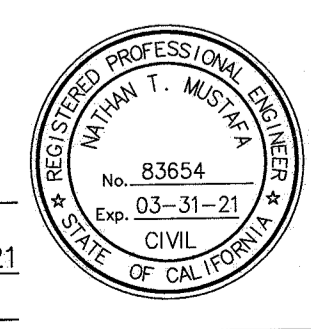
RISER DETAIL

EXIST 120V SIGNAL, 120V SIGN AND 240V STREET LIGHT SERVICE PER STANDARD DRAWING NO. 612.

Under Ground Service Alert of Southern California
 Call: TOLL FREE 1-800-227-2600
 TWO WORKING DAYS BEFORE YOU DIG



ENGINEER IN RESPONSIBLE CHARGE
 NATHAN T. MUSTAFA
 R.C.E. No. 83654 EXPIRES: 03-31-21
 DATE: 8-19-19



MARK	REVISIONS	APPR.	DATE
DC	DRAWN BY DC	CHECKED BY NM	

CITY OF RIVERSIDE, CALIFORNIA
 DEPARTMENT OF PUBLIC WORKS

APPROVED BY: *EM* DATE: 8-19-19
 ENGINEERING MANAGER
 PRINCIPAL ENGINEER

APPROVED BY: *DC* DATE: 8-19-19
 CITY ENGINEER

TRAFFIC DIVISION: DC
 CONSTRUCTION ADMIN. DATE: 8-19-19

TRAFFIC SIGNAL PLAN
 MAGNOLIA AVENUE
 AND
 BANBURY DRIVE

SCALE: 1" = 20'

X-318A
 SHEET 1 OF 1
 FILE NAME: X-318A.DWG