

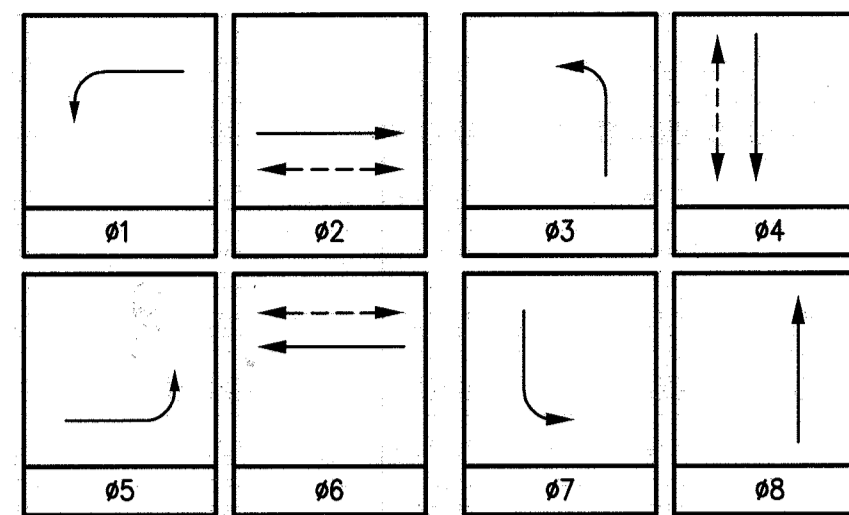
EQUIPMENT SCHEDULE

No.	TYPE	STANDARD		LUMINAIRE LED	ISNS LEGEND	SIGNAL MOUNTING			PPB PHASE	REMARKS		
		HGT.	SIG. M.A.			VEHICLE	PED	AUDIBLE				
A	24-4-129	30'	35'	12'	250W	MAGNOLIA(*)	2-MAS(**)	SV-1-T(**)	-	-	#6	
B	1-A	10'	-	-	-	-	-	TV-1-T(**)	SP-1-T	((P))	-	
C	1-A(RS)	10'	-	-	-	-	-	TV-1-T(RL)	-	-	-	(RL) SHAFT MOUNTED R3-4 & R82A(CA); (RC) FOUNDATION
D	19-2-70(RC)	30'	30'(RC)	15'(RC)	400W(RC)	POLK(RL)	1-MAS(RS)	SV-1-T(RL)	SP-1-T(RL)	((P))	-	(RL) EXISTING EVP TO NEW POLE; (RC) FOUNDATION
E	1-A	10'	-	-	-	-	-	TV-2-T(RS)	-	-	#2	
F	24-4-129	30'	35'	12'	250W	MAGNOLIA(*)	2-MAS(**)	SV-1-T(**)	SP-1-T	((P))	#2	
G	1-A	10'	-	-	-	-	-	TV-1-T(**)	SP-1-T	((C))	#4	
H	1-A	10'	-	-	-	-	-	TV-1-T(**)	SP-1-T	((P))	#4(RS)	SHAFT MOUNTED R3-4 & R82A(CA)
I	19-2-70(RC)	30'	30'(RC)	15'(RC)	400W(RC)	POLK(RL)	1-MAS(RS)	SV-1-T(RL)	SP-1-T(RL)	((P))	#4(RS)	(RL) EXISTING EVP TO NEW POLE; (RC) FOUNDATION
J	1-A	10'	-	-	-	-	-	TV-2-T(RS)	-	((C))	#6	
K	PED POST(N)	42"	-	-	-	-	-	TV-1-T(N)	-	-	#4(N)	

PEDESTRIAN AUDIBLES: C=CUCKOO (NORTH/SOUTH), P=PEEP PEEP (EAST/WEST)
 ALL EQUIPMENT IS EXISTING UNLESS SHOWN (N) = NEW, (RS) = REMOVE AND SALVAGE, (RL) = RELOCATE, (RC) = SEE CONSTRUCTION NOTE BELOW
 (*) = MAST ARM MOUNTED NON-ILLUMINATED REFLECTORIZED STREET NAME SIGNS
 (**) = CONTRACTOR SHALL REMOVE AND REPLACE INDIVIDUAL RED, YELLOW, AND GREEN SIGNAL INDICATIONS WITHIN EXISTING SIGNAL HOUSING.

- ALL VEHICLE HEADS SHALL HAVE 12" LENSES.
- ALL EQUIPMENT THAT IS REMOVED SHALL BE SALVAGED TO THE CITY TRAFFIC SIGNAL MAINTENANCE DEPARTMENT.
- CONTRACTOR SHALL POthOLE MAST ARM POLE FOUNDATIONS PRIOR TO ORDERING POLES AND MAST ARMS.
- IF NECESSARY, ADDITIONAL DETECTOR CARDS CAN BE SUPPLIED BY THE CITY TRAFFIC SIGNAL MAINTENANCE DEPARTMENT.
- LUMINAIRES TO BE REMOVED AND REPLACED SHALL BE A CITY APPROVED 400W EQUIVALENT LED ASSEMBLY AND MAST ARM.

PHASE DIAGRAM

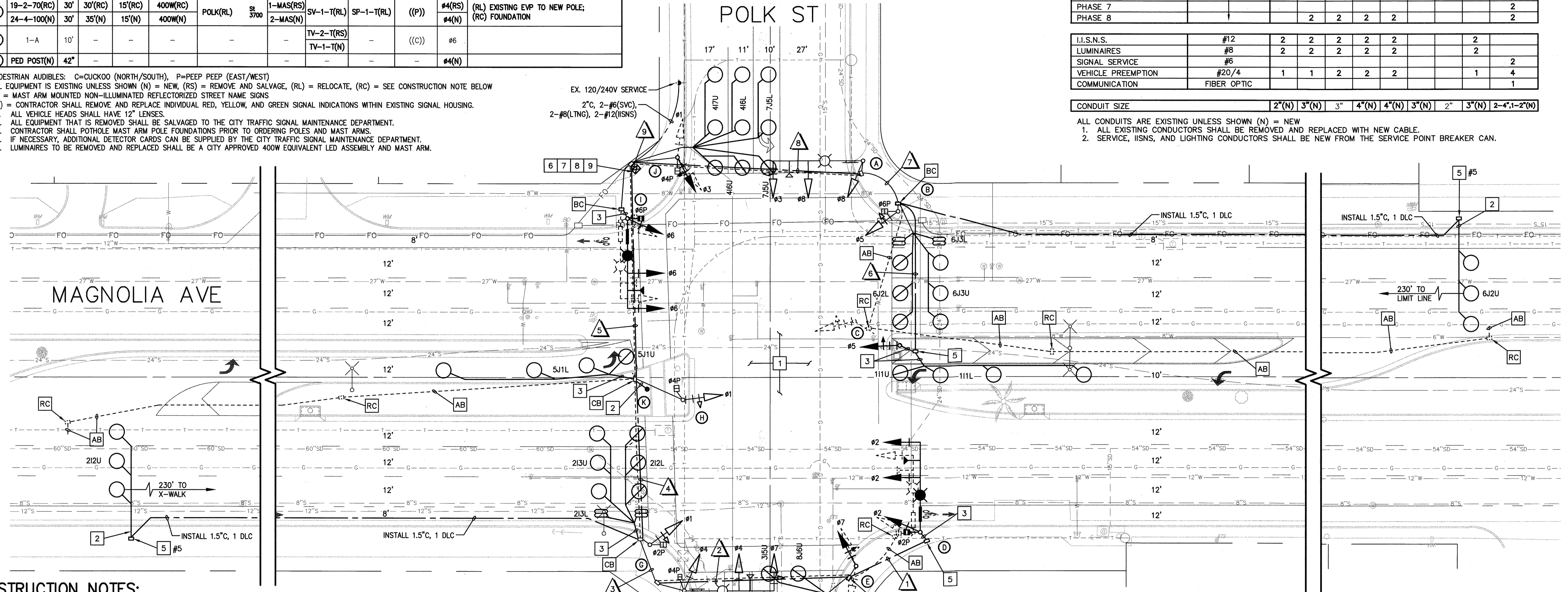


**FLASHING OPERATION SHALL BE ALL RED.

CONDUCTOR TABLE

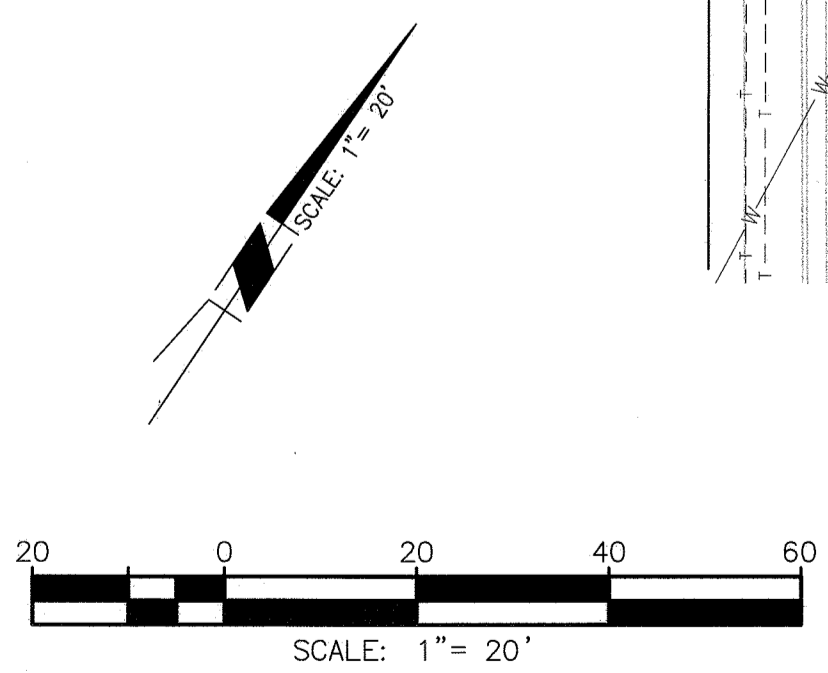
CONTROL FUNCTION	CONDUCTORS	CONDUCTOR RUNS								
		1	2	3	4	5	6	7	8	9
VEHICLE & PEDESTRIAN HEADS, PEDESTRIAN PUSH BUTTONS, SPARES & COMMONS	12 CSC 3 CSC	1	2	3	4	5	1	2	3	10
DETECTOR CABLE	TYPE B									
PHASE 1							2	2	2	2
PHASE 2					4	4				4
PHASE 3			2	2	2	2				2
PHASE 4										3
PHASE 5					2	2				2
PHASE 6								4	4	4
PHASE 7										2
PHASE 8			2	2	2	2				2
I.I.S.N.S.	#12	2	2	2	2	2				2
LUMINAIRES	#8	2	2	2	2	2				2
SIGNAL SERVICE	#6									2
VEHICLE PREEMPTION	#20/4	1	1	2	2	2			1	4
COMMUNICATION	FIBER OPTIC									1
CONDUIT SIZE		2"(N)	3"(N)	3"	4"(N)	4"(N)	3"(N)	2"	3"(N)	2-4", 1-2"(N)

ALL CONDUITS ARE EXISTING UNLESS SHOWN (N) = NEW
 1. ALL EXISTING CONDUCTORS SHALL BE REMOVED AND REPLACED WITH NEW CABLE.
 2. SERVICE, ISNS, AND LIGHTING CONDUCTORS SHALL BE NEW FROM THE SERVICE POINT BREAKER CAN.

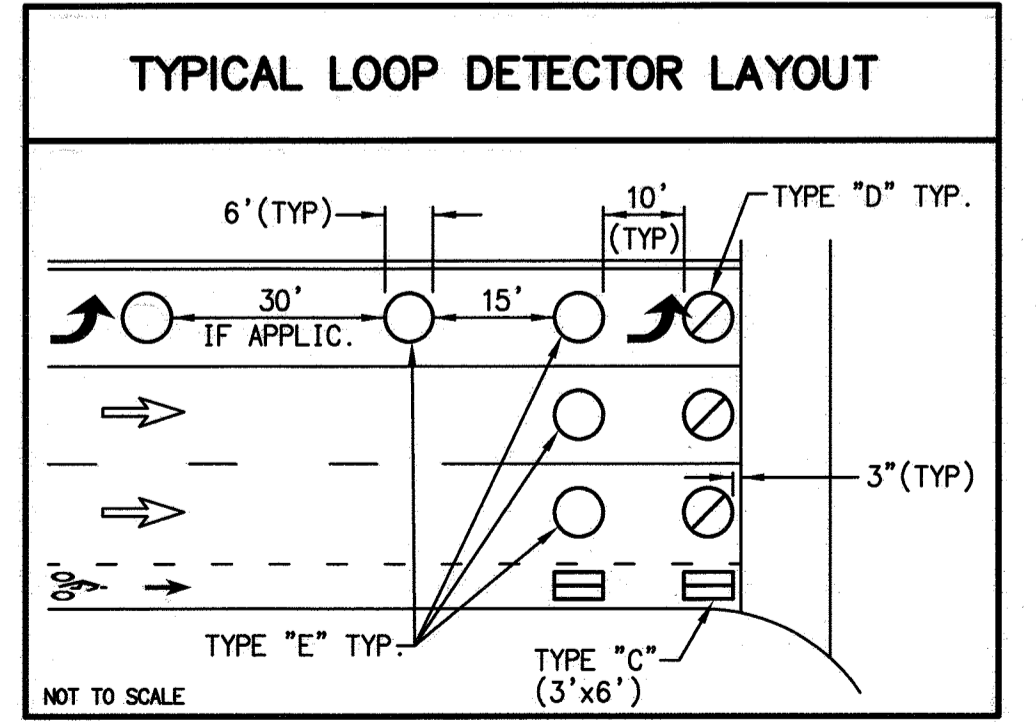
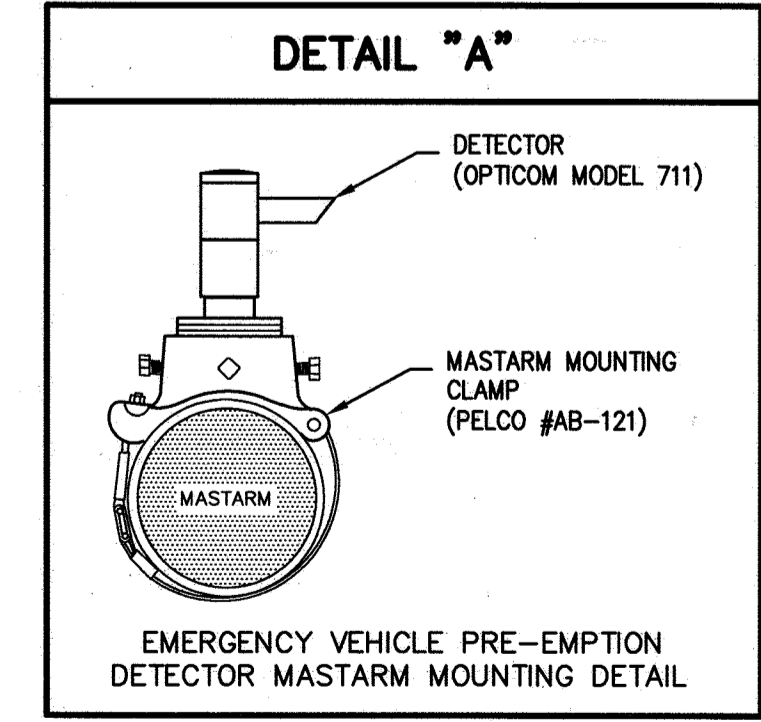
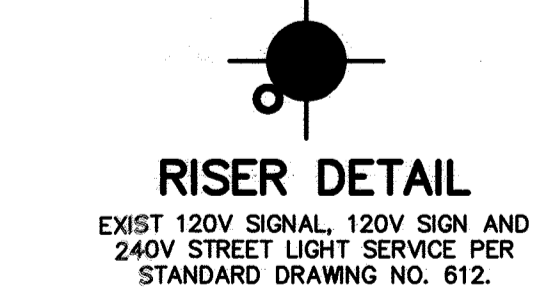


CONSTRUCTION NOTES:

- ALL LOOP DETECTORS SHALL BE NEW. INSTALL PER TYPICAL LOOP DETECTOR LAYOUT DETAIL.
- INSTALL NEW 1.5" CONDUIT.
- INSTALL NEW 2" CONDUIT.
- INTERCEPT EXISTING CONDUIT RUN AND INSTALL A NEW #6 PULLBOX.
- INSTALL NEW NO. 6 PULL BOX, UNLESS OTHERWISE SPECIFIED, WITH FIBERLITE LID, LABELED "TRAFFIC SIGNAL".
- REMOVE AND SALVAGE EXISTING 170 ATC CONTROLLER ASSEMBLY. FURNISH AND INSTALL A 2070 CONTROLLER ASSEMBLY IN EXISTING 332 CABINET.
- REMOVE AND SALVAGE EXISTING 210 CONFLICT MONITOR. FURNISH AND INSTALL A 210 ECL CONFLICT MONITOR.
- FURNISH AND INSTALL AN UNINTERRUPTED POWER SUPPLY (UPS) UNIT PER THE SPECIAL PROVISIONS. THE UPS UNIT AND BATTERIES SHALL BE INSTALLED IN A CABINET, EXTERNALLY MOUNTED TO THE CONTROLLER CABINET.
- TEMPORARILY REMOVE EXISTING CONTROLLER CABINET OFF TO THE SIDE. REMOVE AND REPLACE THE EXISTING CONTROLLER FOUNDATION AND INSTALL (2) 4" AND (1) 2" PVC CONDUIT TO ADJACENT #6E PULL BOX. RE-INSTALL CABINET AND INSTALL NEW CABLE. RE-SPLICE EXISTING FIBER OPTIC CABLE.
- ABANDON EXISTING IN PLACE. EXISTING CONDUCTORS TO BE REMOVED.
- REMOVE EXISTING PULL BOX AND INSTALL NEW NO. 6 PULL BOX, UNLESS OTHERWISE SPECIFIED, WITH FIBERLITE LID, LABELED "TRAFFIC SIGNAL" IN EXISTING CONDUIT RUN.
- INSTALL NEW CONDUIT IN EXISTING TRAFFIC SIGNAL PULLBOX.
- EXISTING EQUIPMENT OR FOUNDATION TO BE COMPLETELY REMOVED AND DISPOSED OF BY THE CONTRACTOR.
- REMOVE AND SALVAGE EXISTING EQUIPMENT TO THE CITY TRAFFIC SIGNAL MAINTENANCE SHOP. SIGNAL POLE FOUNDATIONS MUST BE COMPLETELY REMOVED AND DISPOSED OF BY THE CONTRACTOR. ALL EQUIPMENT MUST BE FULLY DISASSEMBLED AND PALLETIZED BEFORE DELIVERY TO THE CITY YARD.



PP# 60-29655J-64



Under Ground Service Alert of Southern California
 Call: TOLL FREE 1-800-227-2600
 TWO WORKING DAYS BEFORE YOU DIG

ENGINEER IN RESPONSIBLE CHARGE
 NATHAN T. MUSTAFA
 R.C.E. No. 83654 EXPIRES: 03-31-21
 DATE: 8-19-19

MARK REVISIONS APPR. DATE
 DESIGNED BY DC DRAWN BY DC CHECKED BY NM

CITY OF RIVERSIDE, CALIFORNIA
 DEPARTMENT OF PUBLIC WORKS
 APPROVED BY: [Signature]
 ENGINEERING MANAGER: FM
 PRINCIPAL ENGINEER: [Signature]
 TRAFFIC DIVISION: DC
 CONSTRUCTION ADMIN.: DC
 DATE: 8-19-19

TRAFFIC SIGNAL PLAN
 MAGNOLIA AVENUE AND POLK STREET
 SCALE: 1" = 20'

X-322B
 SHEET 1 OF 1
 FILE NAME: X-322B.DWG