

# EQUIPMENT SCHEDULE

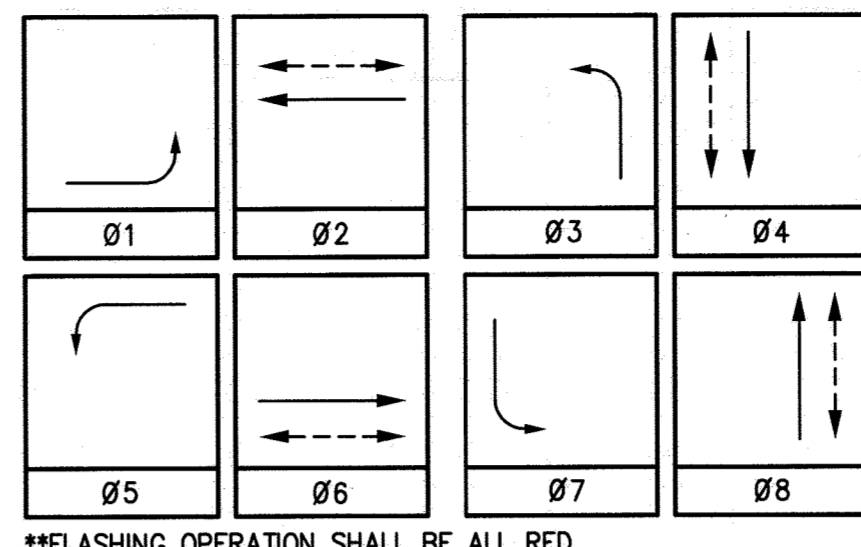
No.	STANDARD			LUMINAIRE LED	ISNS LEGEND	SIGNAL MOUNTING			PPB PHASE	REMARKS
	TYPE	HGT.	SIG. M.A.			VEHICLE	PED	AUDIBLE		
A	19-2-70(RS)	35'	30'(RS)	15'(RS)	Pierce(RL)	MAS(RS)	SV-1-T(RS)	SP-1-T(RL)	((IP))	RELOCATE NOTED EQUIPMENT TO NEW POLE
B	61A-5-100(N)	35'	60'(N)	15'(N)	Pierce	3-MAS(N)	SV-1-T(N)	SP-1-T	((IP))	
C	24A-4-70	35'	35'	15'	Magnolia	2-MAS(RR)	SV-1-T**	SP-1-T	((C))	#6P(N)
D	1A	10'	-	-	-	-	TV-1-T(RR)	SP-1-T	((IP))	#4P(N)
E	1A(RS)	10'	-	-	-	-	TV-1-T(RS)	-	-	#4P(RS)
F	19A-2-70(RS)	35'	30'(RS)	15'(RS)	Pierce(RL)	MAS(RS)	SV-1-T(RS)	SP-1-T(RL)	((IP))	RELOCATE NOTED EQUIPMENT TO NEW POLE
G	61A-5-100(N)	35'	65'(N)	15'(N)	Pierce	3-MAS(N)	SV-1-T(N)	SP-1-T	((IP))	#4P(N)
H	1A	10'	-	-	-	-	TV-2-T(RS)	SP-1-T	((C))	#2P(N)
I	29-5-80	30'	50'	15'	Magnolia	2-MAS(RR)	SV-1-T**	-	-	#2P(N)
J	1A(RS)	10'	-	-	-	-	TV-1-T**	SP-1-T	((IP))	-
K	1A(RS)	10'	-	-	-	-	TV-1-T(RS)	-	-	-

PEDESTRIAN AUDIBLES: C=CUCKOO (NORTH/SOUTH), P=PEEP PEEP (EAST/WEST)  
 ALL EQUIPMENT IS EXISTING UNLESS SHOWN (N) = NEW, (RS) = REMOVE AND SALVAGE, (RL) = RELOCATE, (RR) = REMOVE AND REPLACE  
 (\*\*) = CONTRACTOR SHALL REMOVE AND REPLACE INDIVIDUAL RED, YELLOW, AND GREEN SIGNAL INDICATIONS WITHIN EXISTING SIGNAL HOUSING.

- ALL VEHICULAR HEADS SHALL HAVE 12" LENSES.
- PEDESTRIAN PUSH BUTTONS SHALL BE ACCESSIBLE PEDESTRIAN SIGNAL (APSO 2-WIRE) INSTALLED ON THE POLE IN THE QUADRANT NEAREST THE CROSSWALK SERVING THE PHASE
- CONTRACTOR SHALL POTHOLE MAST ARM POLE FOUNDATIONS PRIOR TO ORDERING POLES AND MAST ARMS.
- ALL EXISTING ISNS LIGHTING ASSEMBLIES SHALL BE REPLACED WITH NEW LED RETROFIT KIT ASSEMBLIES WITH 400W EQUIVALENT UNITS.

2"C, 6PR#19 TO CALTRANS EB SIGNAL  
 2"C, 2"6(SVC), 2#8(LTNG), 2#12(IISNS)

# PHASE DIAGRAM

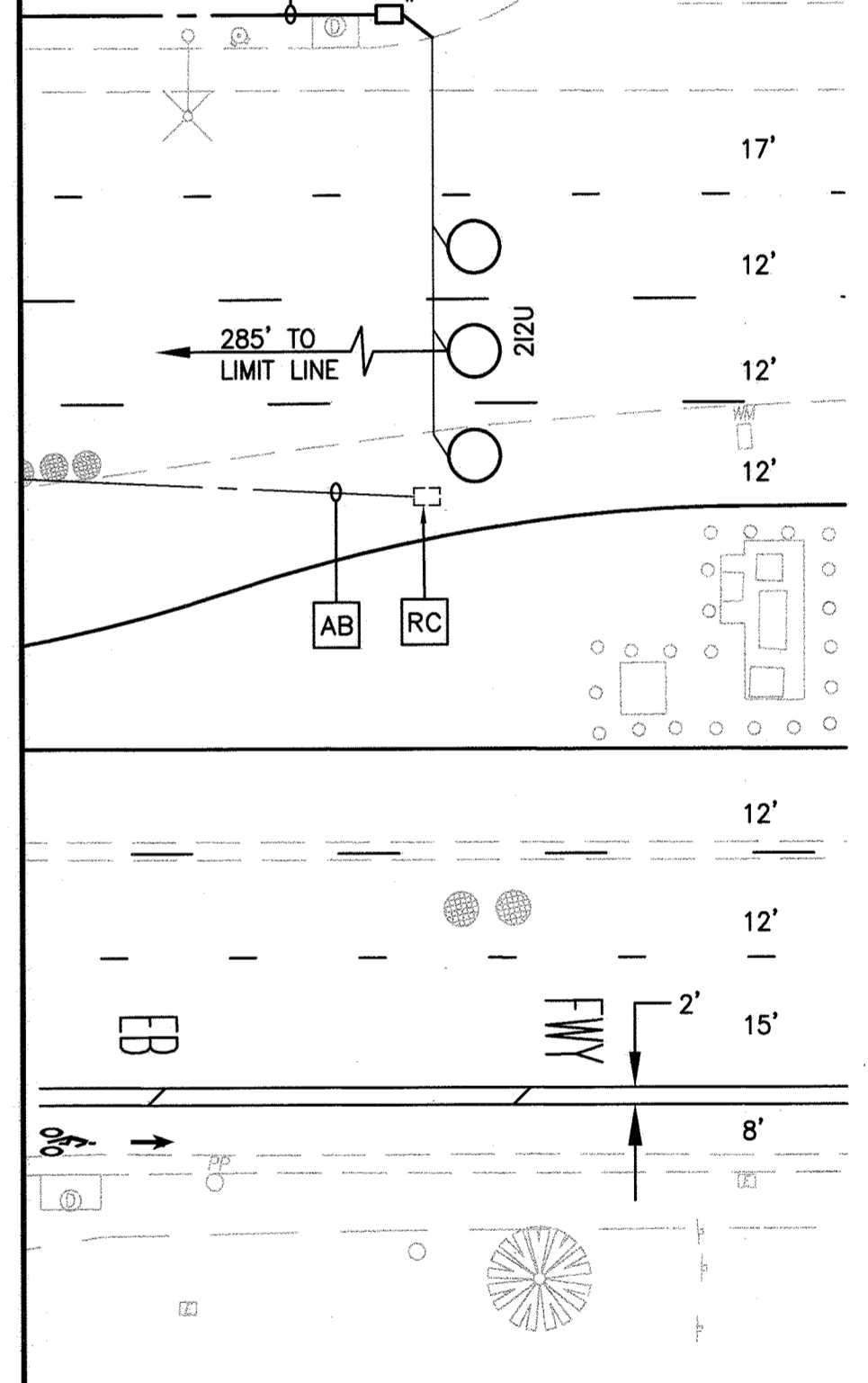
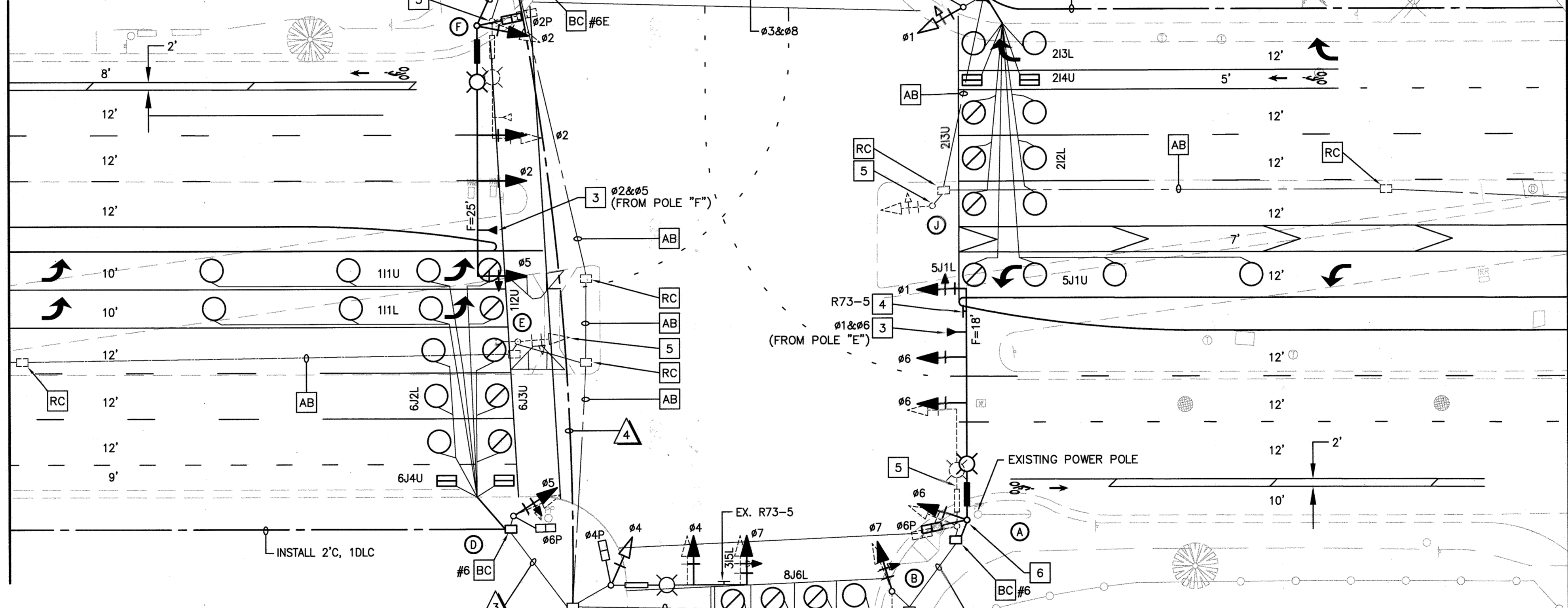
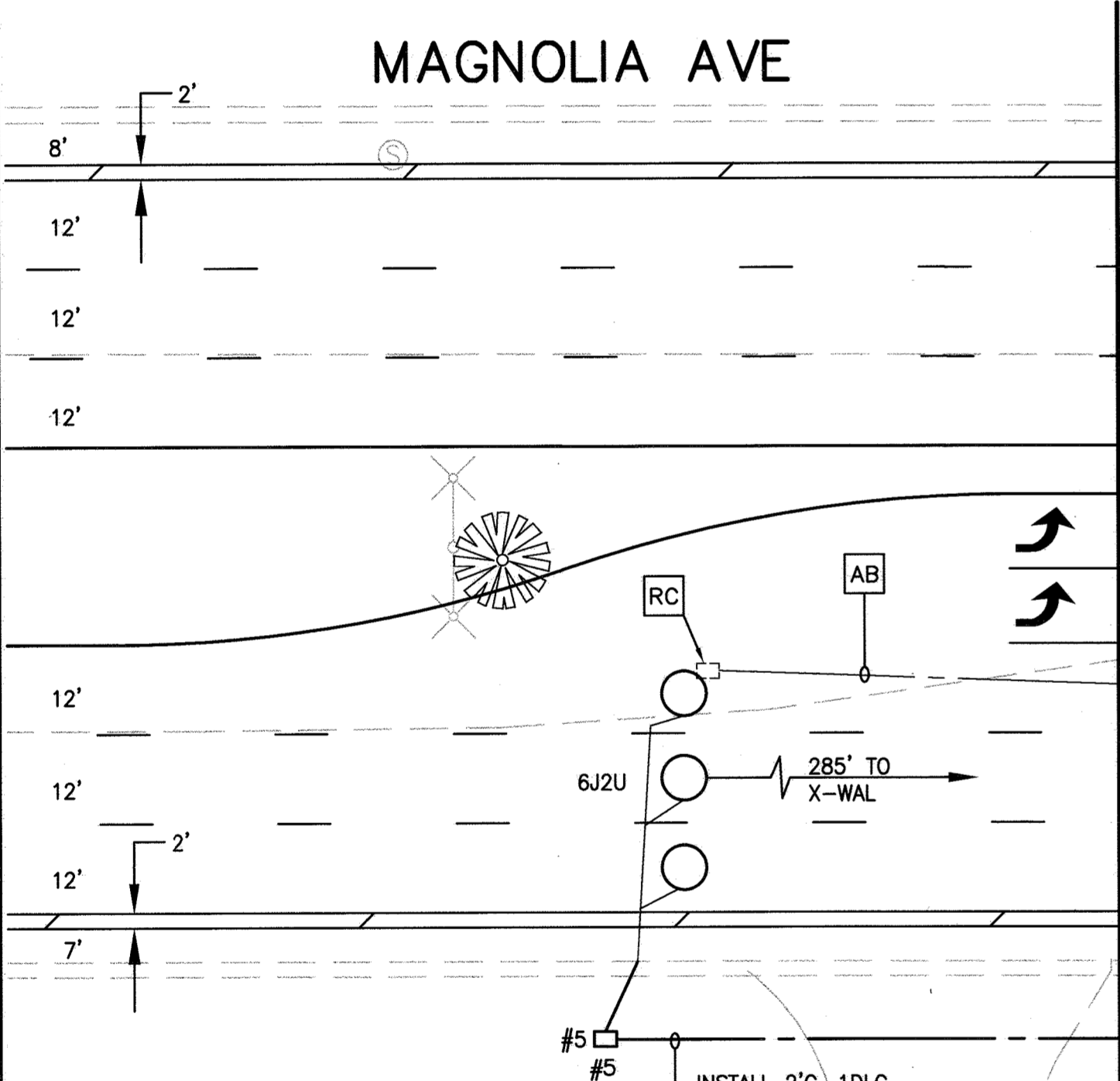


\*\*FLASHING OPERATION SHALL BE ALL RED.

# CONDUCTOR TABLE

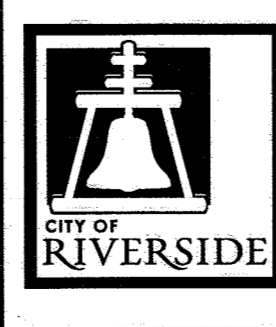
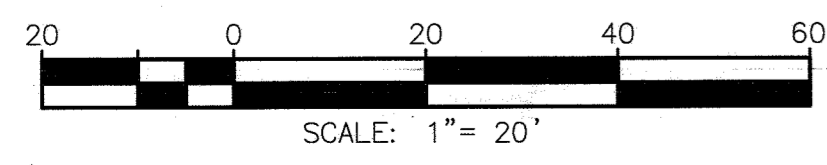
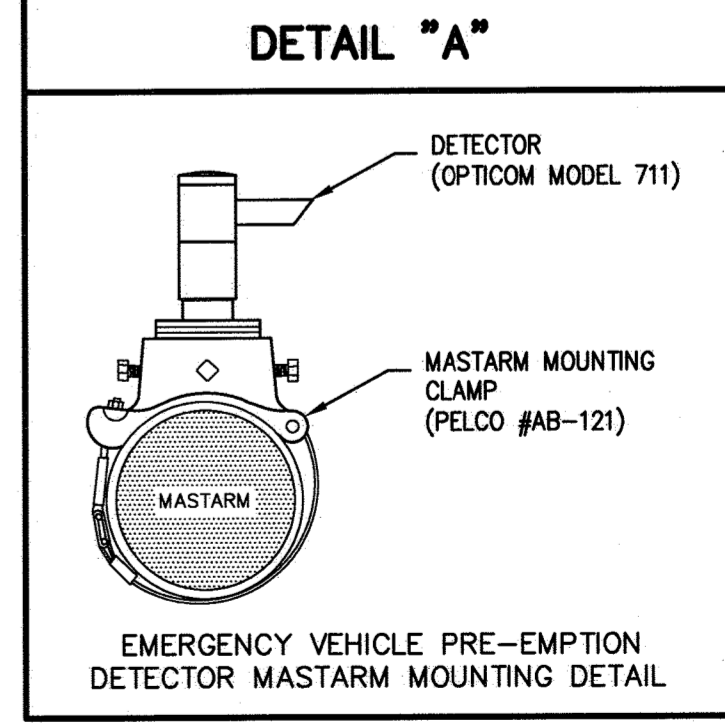
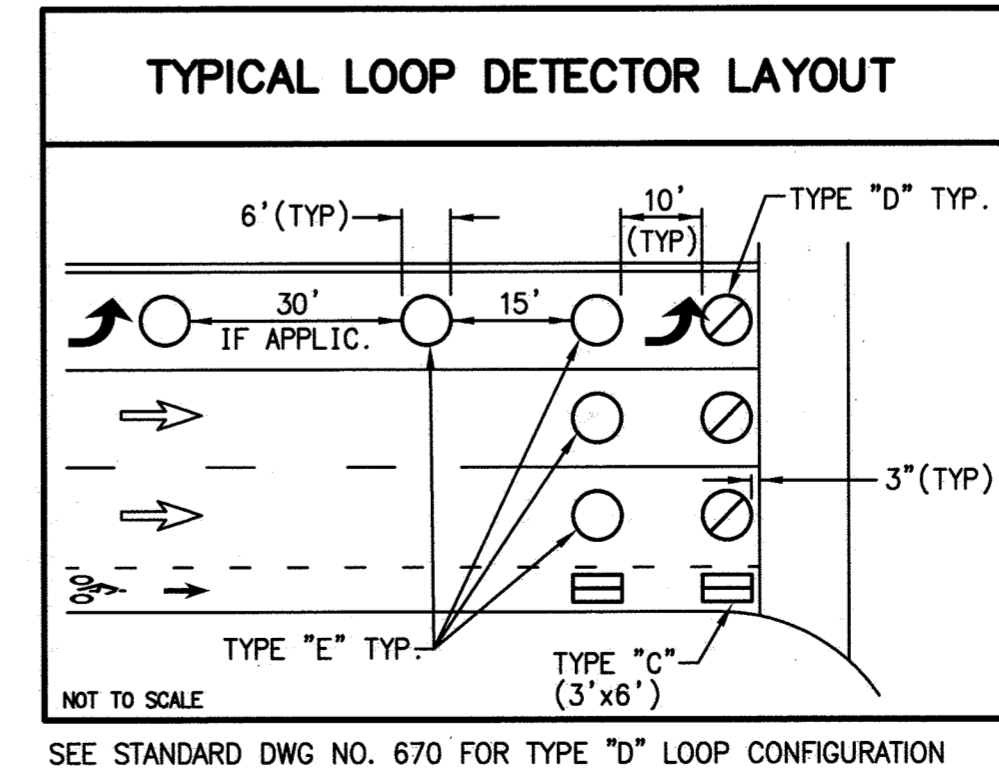
CONTROL FUNCTION	CONDUCTORS	CONDUCTOR RUNS							
		1	2	3	4	5	6	7	8
VEHICLE & PEDESTRIAN HEADS, PEDESTRIAN PUSH BUTTONS, SPARES & COMMONS	12 CSC	1	2	1	4	1	1(N)	2(N)	4(N)
	3 CSC	-	1	1	3	1	-	1(N)	3(N)
DETECTOR CABLE	TYPE B								
PHASE 1									
PHASE 2									
PHASE 3									
PHASE 4									
PHASE 5									
PHASE 6									
PHASE 7									
PHASE 8									
I.I.S.N.S.	#12	2	2	2	2	2	2	2	2
LUMINAIRES	#8	2	2	2	2	2	2	2	2
SIGNAL SERVICE	#6								2
INTERCONNECT	6PR#19								1
VEHICLE PREEMPTION	#20/3	1(N)	1(N)	1(N)	1(N)	1(N)	1(N)	2	2(N)
CONDUIT SIZE		2"	2.5"	2"	4"(N)	2"(N)	2"	2.5"	2-3"

ALL CONDUITS EXISTING UNLESS SHOWN (N) = NEW  
 ALL CABLES ARE EXISTING UNLESS SHOWN (N) = NEW  
 (RR) = EXISTING CONDUCTORS SHALL BE REMOVED AND REPLACED WITH NEW CABLE

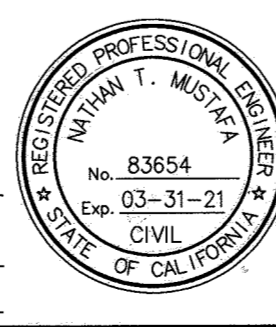


# CONSTRUCTION NOTES:

- REMOVE AND SALVAGE EXISTING MODEL 170-ATC CONTROLLER ASSEMBLY IN MODEL 332 ANODIZED ALUMINUM CABINET. INSTALL 2070(C) McCAIN CONTROLLER. CONTRACTOR SHALL FURNISH ADDITIONAL DETECTOR CHANNEL CARD(S) AND AUXILIARY EQUIPMENT WITHIN A TYPE 332 CABINET PER CITY OF RIVERSIDE SPECIFICATIONS.
- EXISTING ELECTRICAL SERVICE POWER POLE WITH EXISTING BREAKER CAN. PROTECT IN PLACE.
- RELOCATE GTT MODEL No. 711 EMERGENCY VEHICLE PRE-EMPTION DETECTOR. E.V.P.E. SHALL BE MOUNTED ON THE MAST ARM PER DETAIL "A".
- INSTALL SIGN AS NOTED.
- REMOVE EXISTING POLES "A", "E", "F", AND "J". REMOVE FOUNDATIONS COMPLETELY. RELOCATE AND/OR SALVAGE EQUIPMENT AS NOTED.
- CONTRACTOR SHALL PROVIDE A TEMPORARY ABOVE GROUND SIGNAL POLE AT LOCATION "A" TO REMOVE EXISTING POLE AND FOUNDATION. NEW SIGNAL POLE "A" SHALL BE INSTALLED WEST OF THE EXISTING POWER POLE.
- ALL LOOP DETECTORS INCLUDING THOSE ON PIERCE ST SHALL BE NEW. INSTALL PER TYPICAL LOOP DETECTOR LAYOUT DETAIL.
- ALL SALVAGED EQUIPMENT SHALL BE DELIVERED TO THE SIGNAL MAINTENANCE YARD LOCATED AT 8095 LINCOLN AVE. CONTRACTOR SHALL CONTACT 951-351-6098 48 HOUR IN ADVANCE TO SCHEDULE DELIVERY.
- REMOVE AND SALVAGE EXISTING 210 CONFLICT MONITOR. FURNISH AND INSTALL A 210 ECL CONFLICT MONITOR.
- REMOVE AND SALVAGE EXISTING UNINTERRUPTED POWER SUPPLY (UPS) UNIT AND BATTERIES. FURNISH AND INSTALL NEW UPS UNIT AND BATTERIES PER THE SPECIAL PROVISIONS IN EXISTING, EXTERNALLY MOUNTED CABINET.



**ENGINEER IN RESPONSIBLE CHARGE**  
 NATHAN T. MUSTAFA  
 R.C.E. No. 83654 EXPIRES: 03-31-21  
 DATE: 8/19/19



MARK	REVISIONS	APPR.	DATE

**CITY OF RIVERSIDE, CALIFORNIA**  
 DEPARTMENT OF PUBLIC WORKS

APPROVED BY: *[Signature]* DATE: 8-19-19  
 ENGINEERING MANAGER  
 PRINCIPAL ENGINEER

TRAFFIC DIVISION: DC  
 CONSTRUCTION ADMIN. DATE: 8-19-19  
 PUBLIC UTILITIES

**TRAFFIC SIGNAL PLAN**  
**MAGNOLIA AVENUE AND PIERCE STREET**  
 SCALE: 1" = 20'

**X-324C**  
 SHEET 1 OF 1  
 FILE NAME: X-324C.DWG