

CONDUCTOR TABLE

CONTROL FUNCTION	CONDUCTORS	CONDUCTOR RUNS										
		1	2	3	4	5	6	7	8	9	10	
VEHICLE & PEDESTRIAN HEADS, PEDESTRIAN PUSH BUTTONS, SPARES & COMMONS	12 CSC	1	2	1	1	4	5	1	2	2	5	2
	5 CSC	-	-	-	-	-	-	-	-	1	1	
	3 CSC	1	2	1	1	4	5	1	2	3	5	3

DETECTOR CABLE	TYPE B													
PHASE 1										1	1	1	1	
PHASE 2					2	1(N)	2	1(N)	2	1(N)			2	1(N)
PHASE 3				1			1	1					1	1
PHASE 4													1	1
PHASE 5					1	1(N)	1	1(N)	1	1(N)			1	1(N)
PHASE 6											2	2	2	2
PHASE 7													1	1
PHASE 8							1	1					1	1

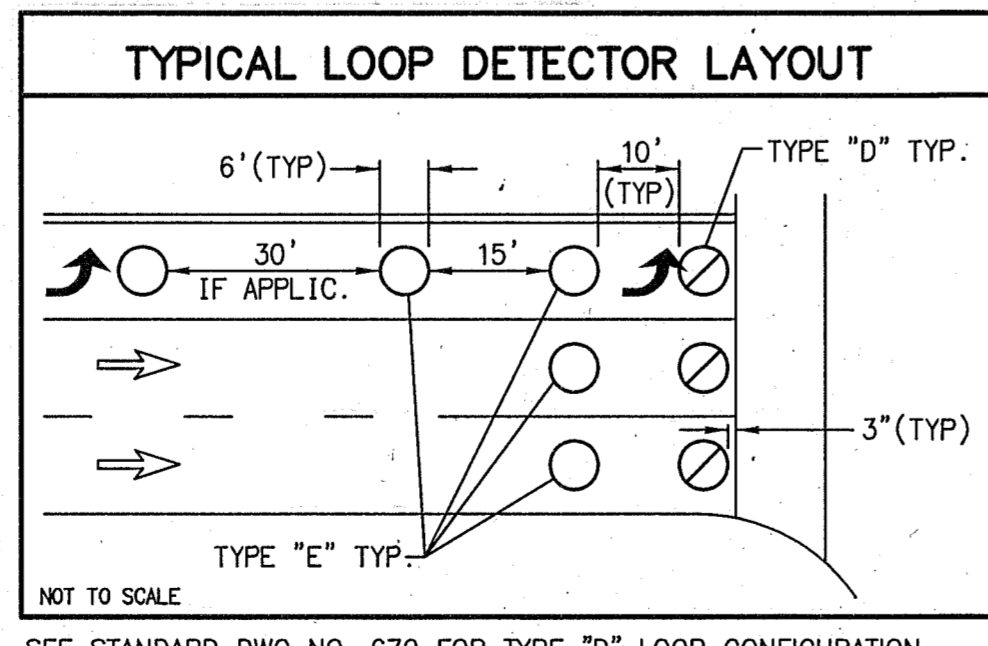
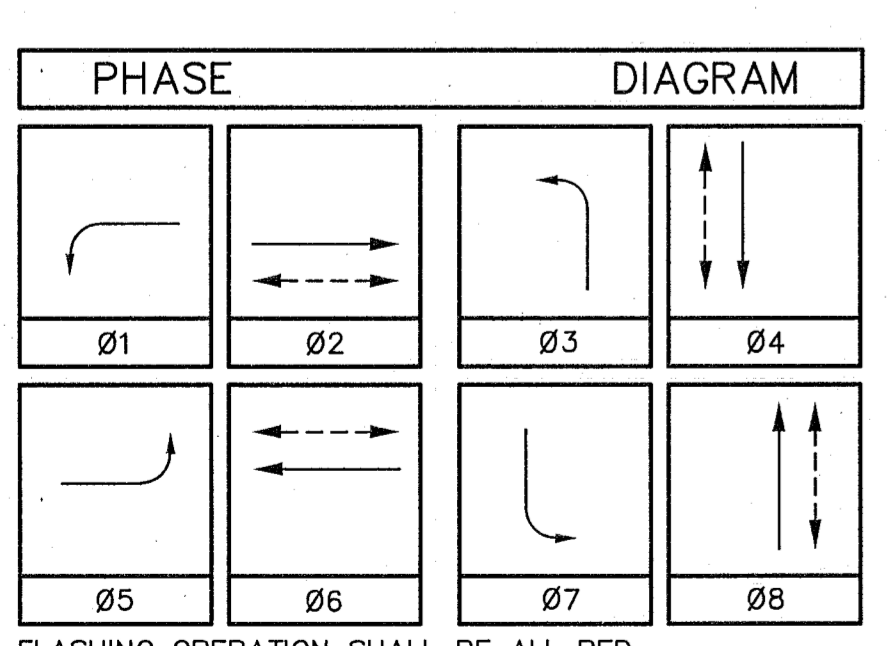
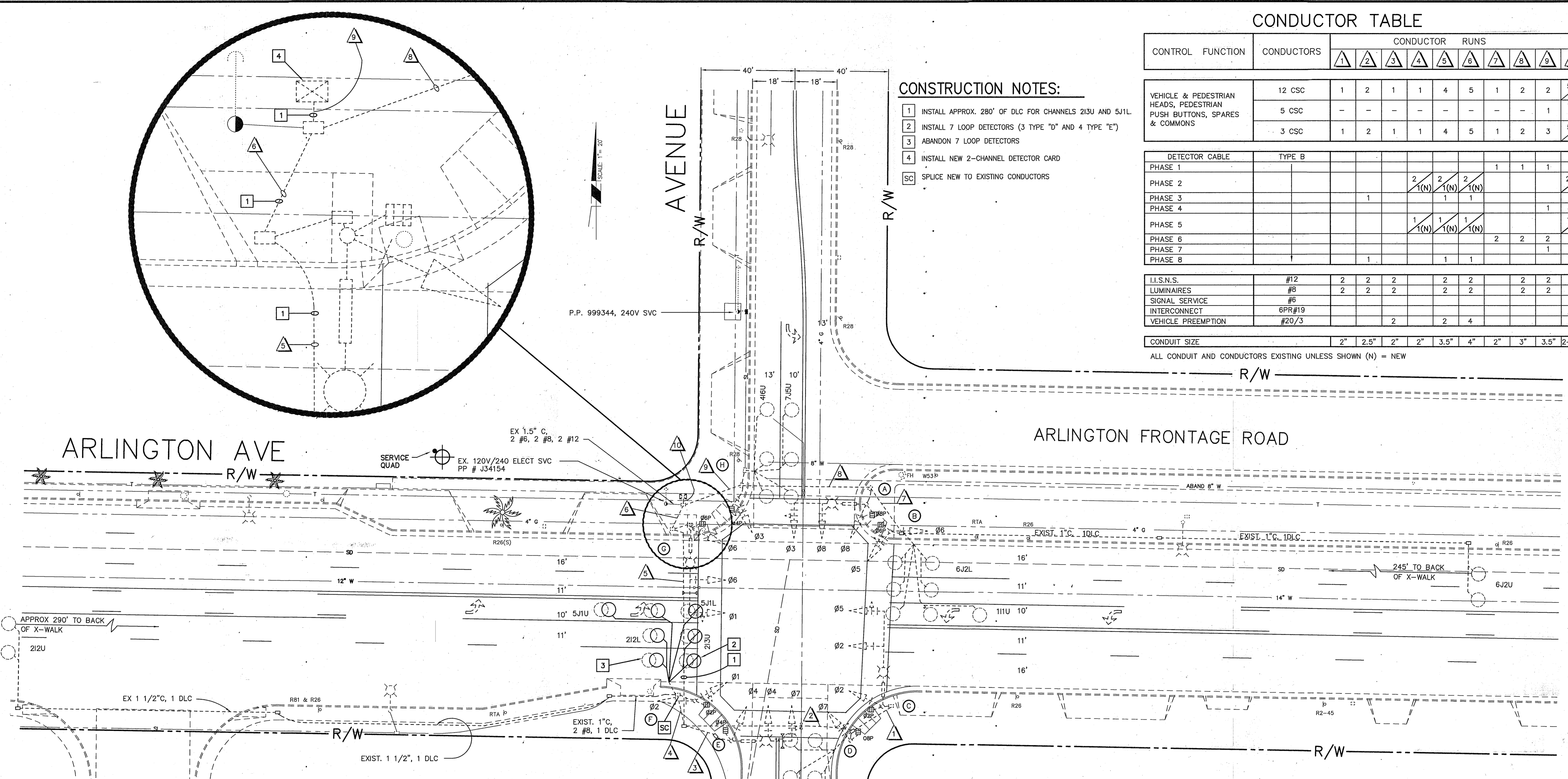
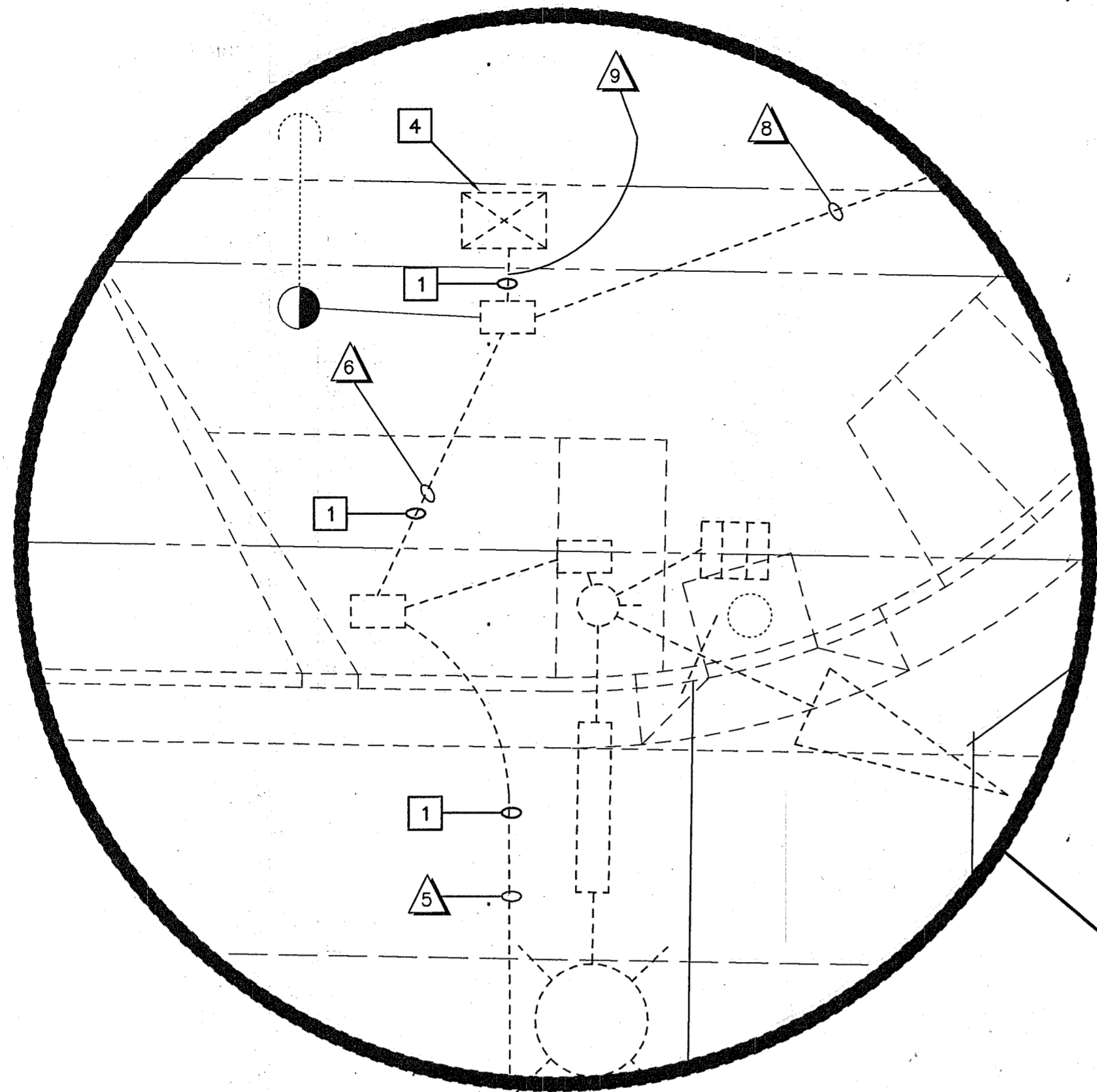
I.I.S.N.S.	#12	2	2	2		2	2				2	2		
LUMINAIRES	#8	2	2	2		2	2				2	2		
SIGNAL SERVICE	#6													2
INTERCONNECT	6PR#19													
VEHICLE PREEMPTION	#20/3				2		2	4						4

CONDUIT SIZE										
	2"	2.5"	2"	2"	3.5"	4"	2"	3"	3.5"	2-3.5"

ALL CONDUIT AND CONDUCTORS EXISTING UNLESS SHOWN (N) = NEW

CONSTRUCTION NOTES:

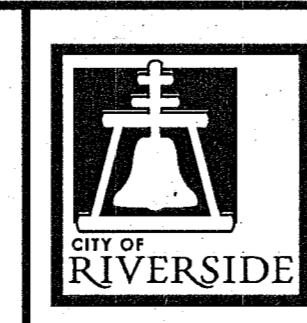
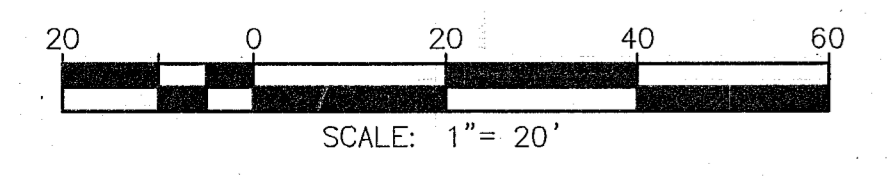
- 1 INSTALL APPROX. 280' OF DLC FOR CHANNELS 213U AND 5J1L.
- 2 INSTALL 7 LOOP DETECTORS (3 TYPE "D" AND 4 TYPE "E")
- 3 ABANDON 7 LOOP DETECTORS
- 4 INSTALL NEW 2-CHANNEL DETECTOR CARD
- SC SPLICE NEW TO EXISTING CONDUCTORS



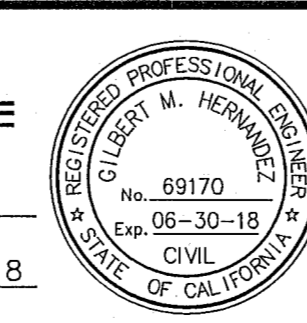
EQUIPMENT SCHEDULE

No.	STANDARD TYPE	HGT.	SIG. M.A.	LUM. M.A.	LUMINAIRE H.P.S.	IISNS LEGEND	SIGNAL MOUNTING			PPB PHASE	REMARKS	
							VEHICLE	PED	AUDIBLE			
(A)	19-4-80	30'	30'	12'	250W	Arlington Ave 8000	2-MAS	SV-1-T	SP-1-T	((C))	#6	
(B)	1A	10'	-	-	-	-	-	TV-2-7	SP-1-T	((P))	#8	
(C)	26-4-80	30'	40'	12'	250W	Rutland Ave 6300	2-MAS	SV-1-T	SP-1-T	((P))	#8	
(D)	1A	10'	-	-	-	-	-	TV-1-T	SP-1-T	((C))	#2	
(E)	19-4-80	30'	25'	12'	250W	Arlington Ave 9000	2-MAS	SV-1-T	SP-1-T	((C))	#2	
(F)	1A	10'	-	-	-	-	-	TV-2-T	SP-1-T	((P))	#4	
(G)	24-4-80	30'	35'	12'	250W	Rutland Ave 6400	2-MAS	SV-1-T	SP-1-T	((P))	#4	
(H)	1A	10'	-	-	-	-	-	TV-2-T	SP-1-T	((C))	#6	

ALL EQUIPMENT EXISTING



ENGINEER IN RESPONSIBLE CHARGE
 GILBERT M. HERNANDEZ
 R.C.E. No. 69170 EXPIRES: 6-30-18
 DATE: 12-22-17



MARK	REVISIONS	APPR.	DATE

CITY OF RIVERSIDE, CALIFORNIA
 DEPARTMENT OF PUBLIC WORKS

APPROVED BY: *[Signature]* DATE: 12/27/17
 ENGINEERING MANAGER
 PRINCIPAL ENGINEER

TRAFFIC DIVISION: NM DATE: 12/27/17
 CONSTRUCTION ADMIN.: S.N. DATE: 12-27-17
 PUBLIC UTILITIES

TRAFFIC SIGNAL PLAN
ARLINGTON AVENUE AND RUTLAND AVENUE
 SCALE: 1" = 20'

X-432B
 SHEET 1 OF 1
 FILE NAME: X-432A.DWG