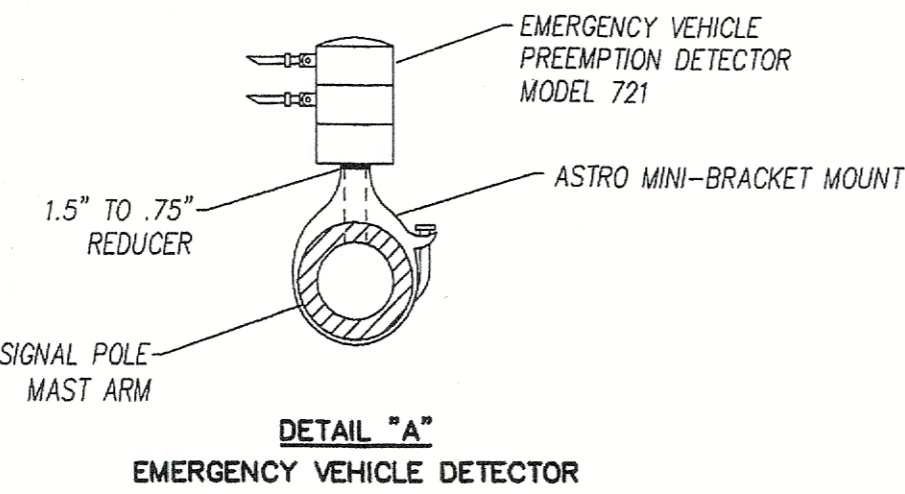
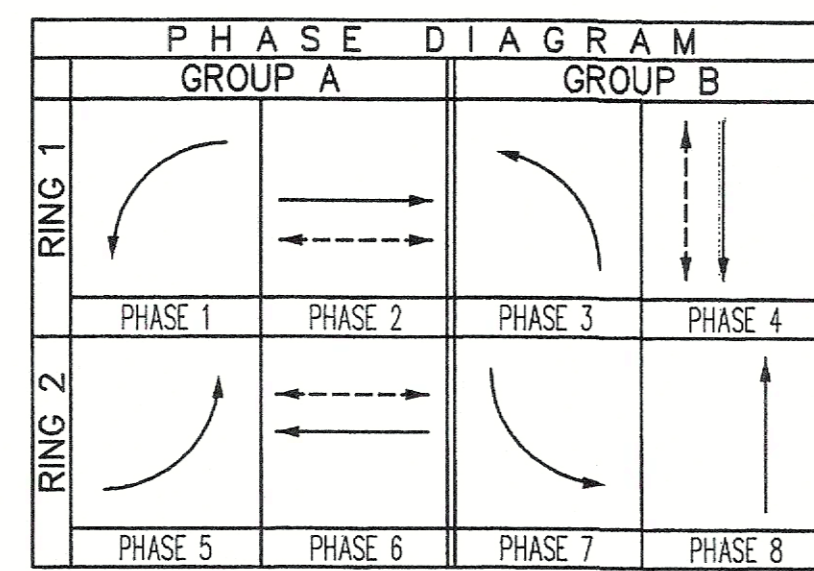
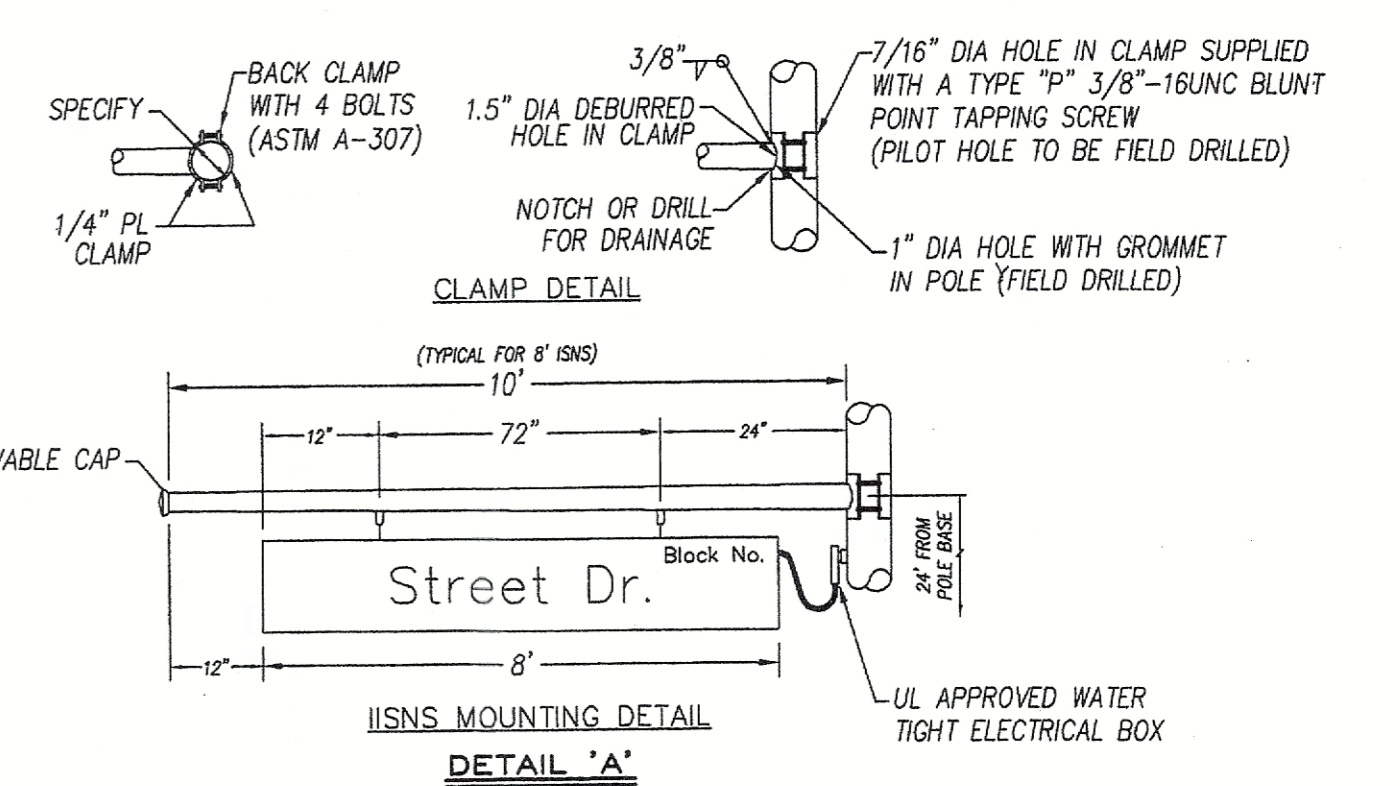


CONDUCTOR AND CONDUIT SCHEDULE		RUN TO											
AWG	CIRCUIT	1	2	3	4	5	6	7	8	9	10	11	12
12 COND. CABLE	POLE ①	1/1	1/1	1/1	1/1	1/1	1/1	1/1	1/1	1/1	1/1	1/1	1/1
	POLE ②	-	1/1	1/1	1/1	1/1	1/1	1/1	1/1	1/1	1/1	1/1	1/1
	POLE ③	-	-	1/1	1/1	1/1	1/1	1/1	1/1	1/1	1/1	1/1	1/1
	POLE ④	-	-	-	1/1	1/1	1/1	1/1	1/1	1/1	1/1	1/1	1/1
	POLE ⑤	-	-	-	-	1/1	1/1	1/1	1/1	1/1	1/1	1/1	1/1
3 COND. CABLE	POLE ⑥	-	-	-	-	-	1/1	1/1	1/1	1/1	1/1	1/1	1/1
	POLE ⑦	-	-	-	-	-	-	1/1	1/1	1/1	1/1	1/1	1/1
	POLE ⑧	-	-	-	-	-	-	-	1/1	1/1	1/1	1/1	1/1
	POLE ⑨	-	-	-	-	-	-	-	-	1/1	1/1	1/1	1/1
	TOTAL	1/1	2/2	3/3	4/4	1/1	2/2	3/3	3/3	8/8	8/8	8/8	8/8
#6 SIGNAL SERVICE	-	-	-	-	-	-	-	-	-	-	-	-	-
#8 BOND WIRE	1	1	1	1	1	1	1	1	1	1	1	1	1
#8 LUMINAIRE	2	2	2	2	2	2	2	2	2	2	2	2	2
#12 I.I.S.N.S.	2	2	2	2	2	2	2	2	2	2	2	2	2
TYPE B DLC	#1	-	-	-	-	-	-	-	-	-	-	-	-
	#2	-	-	-	-	-	-	-	-	-	-	-	-
	#3	-	-	-	-	-	-	-	-	-	-	-	-
	#4	-	-	-	-	-	-	-	-	-	-	-	-
	#5	-	-	-	-	-	-	-	-	-	-	-	-
	#6	-	-	-	-	-	-	-	-	-	-	-	-
	#7	-	-	-	-	-	-	-	-	-	-	-	-
	#8	-	-	-	-	-	-	-	-	-	-	-	-
TOTAL	0	5	5	9	4	4	7	16	16	16	16	16	16
EVP CABLE (3M TYPE 13B)	1	1	2	2	-	-	-	-	-	-	-	-	-
CONDUIT SIZE	3"	4"	4"	4"	3"	4"	4"	2-4"	2-4"	2-4"	2-4"	2-4"	2-4"
PERCENT FILL	10%	13%	13%	13%	18%	14%	17%	19%	19%	19%	19%	19%	19%

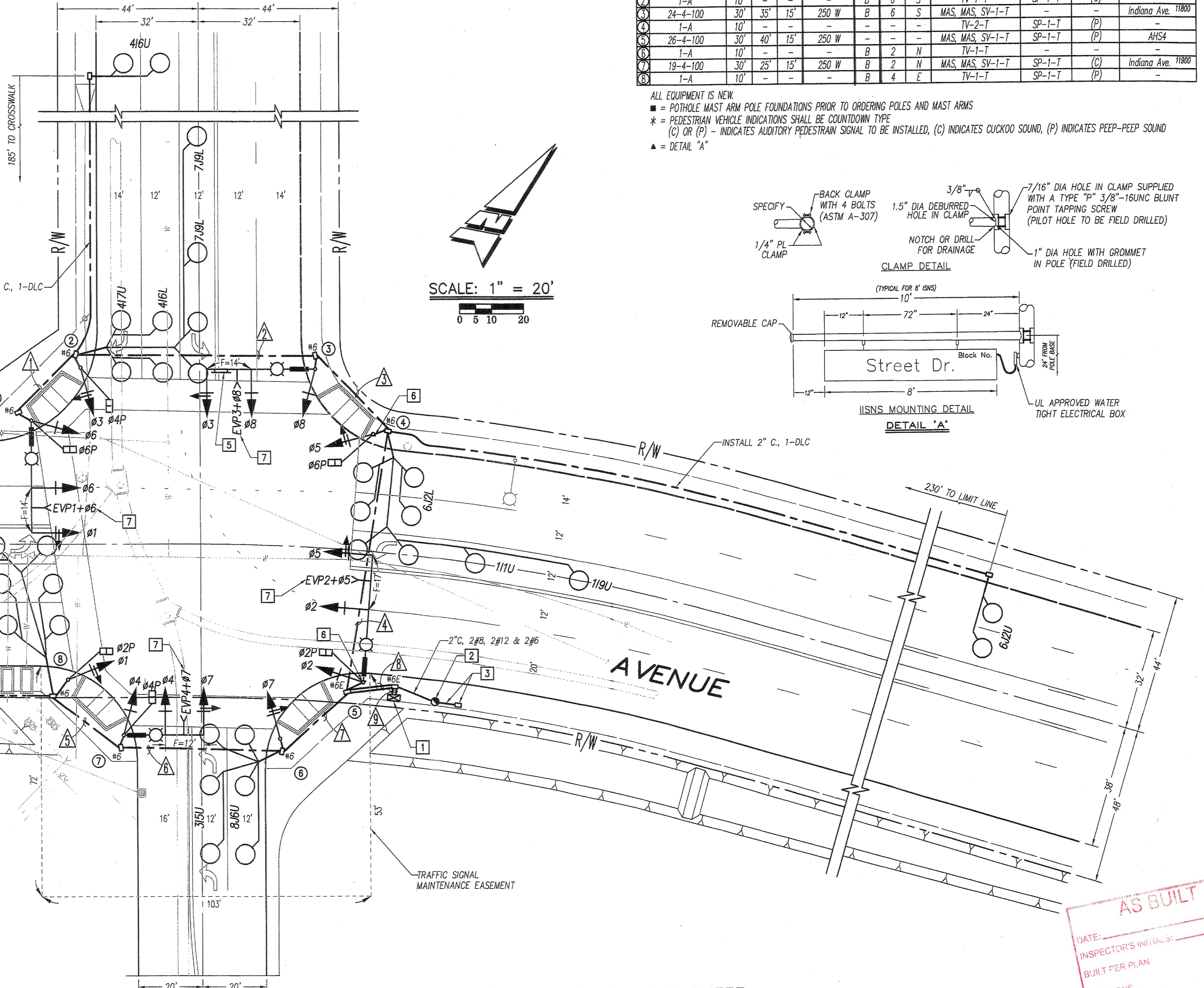


POLE SCHEDULE											
STANDARD	ARMS	LUMINAIRE	H.P.S.V.	PED PUSH BT.	SIGNAL MOUNTING		VEHICLE		I.I.S.N.S.		
TYPE	HT.	SIG. LUM.	TYPE	PHASE QUAD	TYPE	PHASE QUAD	VEHICLE	# PED.	AUDIBLE	MESSAGE	
24-4-100	30'	35' 15"	250 W	B 4 E	MAS, MAS, SV-1-T	SP-1-T	MAS, MAS, SV-1-T	SP-1-T	(P)	Pierce St. 3500	
1-A	10'	-	-	B 6 S	TV-1-T	SP-1-T	TV-1-T	SP-1-T	(C)	-	
24-4-100	30'	35' 15"	250 W	B 6 S	MAS, MAS, SV-1-T	-	MAS, MAS, SV-1-T	-	-	Indiana Ave. 11800	
1-A	10'	-	-	-	TV-2-T	SP-1-T	TV-2-T	SP-1-T	(P)	-	
26-4-100	30'	40' 15"	250 W	-	MAS, MAS, SV-1-T	SP-1-T	MAS, MAS, SV-1-T	SP-1-T	(P)	AHS4	
1-A	10'	-	-	B 2 N	TV-1-T	SP-1-T	TV-1-T	SP-1-T	(C)	-	
19-4-100	30'	25' 15"	250 W	B 2 N	MAS, MAS, SV-1-T	SP-1-T	MAS, MAS, SV-1-T	SP-1-T	(C)	Indiana Ave. 11800	
1-A	10'	-	-	B 4 E	TV-1-T	SP-1-T	TV-1-T	SP-1-T	(P)	-	

ALL EQUIPMENT IS NEW.  
 \* = POTHOLE MAST ARM POLE FOUNDATIONS PRIOR TO ORDERING POLES AND MAST ARMS  
 \* = PEDESTRIAN VEHICLE INDICATIONS SHALL BE COUNTDOWN TYPE  
 (C) OR (P) - INDICATES AUDITORY PEDESTRIAN SIGNAL TO BE INSTALLED, (C) INDICATES CUCKOO SOUND, (P) INDICATES PEEP-PEEP SOUND  
 ▲ = DETAIL "A"



PIERCE STREET



GENERAL NOTES:

- ALL ITEMS FURNISHED AND ALL WORK TO BE DONE SHALL CONFORM TO THE REQUIREMENTS OF: THE STATE OF CALIFORNIA, DEPARTMENT OF TRANSPORTATION (CALTRANS) STANDARD PLANS AND SPECIFICATIONS, DATED MAY 2006; THE CALIFORNIA MANUAL ON UNIFORM TRAFFIC CONTROL DEVICES ADOPTED SEPTEMBER 2006; AND THE SPECIAL PROVISIONS.
- UTILITIES SHOWN ON THE PLAN ARE CORRECT AND ACCURATE TO THE EXTENT OF AVAILABLE RECORDS. THE CONTRACTOR IS REQUIRED TO TAKE STEPS TO ASCERTAIN THE EXACT LOCATION OF ALL KNOWN SUBSTRUCTURES PRIOR TO DOING WORK THAT MAY DAMAGE OR INTERFERE WITH SUCH FACILITIES ("UNDERGROUND SERVICE ALERT")
- THE CONTRACTOR SHALL OBTAIN ALL NECESSARY PERMITS TO NOTIFY ALL AFFECTED AGENCIES AND THE RIVERSIDE UTILITY COMPANIES A MINIMUM OF 48 HOURS PRIOR TO START CONSTRUCTION.
- UNLESS SHOWN OTHERWISE, INDUCTIVE LOOPS SHALL BE 6' DIAMETER WITH 10', 15' AND 30' SPACING IN THE DIRECTION OF TRAVEL. NECESSARY STRIPING SHALL BE LOCATED PRIOR TO POSITIONING LOOPS. LOOPS SHALL BE SEALED WITH HOT MELT SEALANT.
- CONDUCTOR SCHEDULE IS FURNISHED AS AN INSTALLATION GUIDE ONLY. IT SHALL BE THE CONTRACTORS RESPONSIBILITY TO PROVIDE THE CORRECT CONDUCTORS REQUIRED FOR THE INTENDED OPERATION.
- CONDUIT BETWEEN ADJOINING PULL BOXES SHALL BE 2.5" UNLESS SHOWN OTHERWISE. ALL CONDUIT AND FITTINGS SHALL BE RIGID METAL UNLESS SHOWN OTHERWISE (BURIED IN A MINIMUM OF 30" OF COVER IN THE STREET AND PARKWAY).
- TRAFFIC SIGNAL INTERCONNECT (SIC) SHALL BE 3" UNLESS SHOWN OTHERWISE, BURIED IN A MINIMUM OF 30" OF COVER IN THE STREET AND PARKWAY, NO. 6 PULL BOXES SHALL BE SPACED AT 400' AND THE MAXIMUM SIC BENDING RADIUS SHALL NOT EXCEED 45'. SIC SHALL ONLY INCLUDE SIGNAL INTERCONNECT CONDUCTORS.
- UNDERGROUND SIGNAL CONDUCTORS SHALL NOT BE SPLICED.
- PULL BOXES SHALL BE NO. 5, UNLESS OTHERWISE NOTED ON THE PLAN. SIGNAL INTERCONNECT PULL BOXES SHALL BE NO. 6 WITH THE PULL BOX LID LABELED "COMMUNICATIONS". PULL BOXES SHALL BE SPACED AT 400' MAXIMUM.
- PULL BOXES SHALL NOT BE LOCATED IN OR WITHIN 1' OF ANY CURB ACCESS RAMP OR DRIVEWAY.
- THE CONTRACTOR SHALL VERIFY WITH THE ENGINEER THE PRECISE FILED LOCATIONS OF ALL TRAFFIC SIGNAL EQUIPMENT PRIOR TO THE INSTALLATION.
- ALL LANDSCAPING WHICH IS DAMAGED BY CONSTRUCTION ACTIVITIES SHALL BE REPAIRED OR REPLACED TO THE SATISFACTION OF THE CITY AND THE PROPERTY OWNER.
- NEW MAST ARM MOUNTED SIGN SHALL BE FABRICATED WITH 3M "ASTM TYPE 11" REFLECTIVE SHEETING OR APPROVED EQUAL.
- VEHICLE HEADS SHALL BE 12" LED TYPE. THE HOUSING, BACKPLATES AND VISORS SHALL BE METAL
- INTERNALLY ILLUMINATED STREET NAME SIGNS (IISNS) SHALL BE TYPE A. STREET NAME LEGENDS SHALL BE UPPER/LOWER CASE AND SHALL INCLUDE STREET ADDRESSES AND ROAD NAME SUFFIXES.
- SALVAGED TRAFFIC SIGNAL EQUIPMENT SHALL BE DELIVERED TO THE CITY OF RIVERSIDE TRAFFIC SIGNAL MAINTENANCE YARD.
- DAMAGED SIDEWALK CONCRETE SHALL BE REPLACED PER CITY OF RIVERSIDE STANDARD.
- THE CONTRACTOR SHALL REMOVE ALL UNUSED PULL BOXES AND RE-PAVE SURROUNDING AREA TO MATCH EXISTING OR PROPOSED GRADE. ALL UNUSED CONDUIT SHALL BE ABANDONED AND CAPPED ONCE UNUSED CONDUCTORS ARE REMOVED.

CONSTRUCTION NOTES THIS SHEET:

- SUPPLY AND INSTALL MODEL 170E CONTROLLER ASSEMBLY, TWO OPTICOM EVP MODEL 752 DISCRIMINATORS, BATTERY BACK-UP SYSTEM AND APPURTENANCES IN TYPE 332 CABINET.
- SUPPLY AND INSTALL 120/240 VOLT SERVICE. PER CITY OF RIVERSIDE STANDARD DRAWING 667.
- INSTALL 1.5" SCHEDULE 80 PVC CONDUIT, 3-#6 CONDUCTORS AND #6 PULL BOX (HAND HOLE) PER CITY OF RIVERSIDE PUBLIC UTILITY SPECIFICATION. CONTACT MR. JULIAN CARDENAS (951) 826-5489.
- INSTALL 48"x30" R3-8A SIGN AS SHOWN PER STATE STANDARD PLAN ES-6T, DETAIL "U".
- INSTALL 30"x30" R3-4 SIGN AS SHOWN PER STATE STANDARD PLAN ES-6T, DETAIL "U".
- INSTALL R9-3a AND R9-3b (LEFT OR RIGHT AS APPROPRIATE) "NO PED XING" SIGNS ON SIGNAL POLE.
- FURNISH AND INSTALL 3M OPTICOM MODEL 721 EVP DETECTOR (PHASES AS SHOWN) ON SIGNAL MAST ARM PER DETAIL "A" OPTICAL DETECTOR LOCATIONS TO BE APPROVED BY ENGINEER PRIOR TO MOUNTING.

AS BUILT  
 DATE: \_\_\_\_\_  
 INSPECTOR'S INITIALS: \_\_\_\_\_  
 BUILT PER PLAN \_\_\_\_\_  
 REVISIONS \_\_\_\_\_

**DIG ALERT**  
 DIAL TOLL FREE  
 1-800-422-4133  
 AT LEAST TWO DAYS BEFORE YOU DIG  
 UNDERGROUND SERVICE ALERT OF SOUTHERN CALIFORNIA

REGISTERED PROFESSIONAL ENGINEER  
 GERALD J. STOKER  
 No. C052822  
 Exp. 12-31-08  
 CIVIL  
 STATE OF CALIFORNIA

PLANS PREPARED BY:  
**HARTZOG CRABILL, Inc.**  
 Consulting Traffic Engineers  
 275 Centennial Way, Suite 208  
 Tustin, California 92780  
 714.731.9455 fax: 714.731.9498  
 www.hartzog-crabill.com  
 GERALD J. STOKER R.C.E. No. C052822 Exp. 12-31-08  
 H7-08 DATE  
 DESIGNED BY: TMH DRAWN BY: TMH CHECKED BY: T.G.H.

**CITY OF RIVERSIDE**  
 DEPARTMENT OF PUBLIC WORKS  
 APPROVED BY: \_\_\_\_\_ DATE: 12/12/08 BY: \_\_\_\_\_  
 PRINCIPAL ENGINEER  
 TRAFFIC DIVISION  
 ENGINEERING MANAGER  
 CONTRACT ADMINISTRATOR  
 DATE: 12/12/08

**TRAFFIC SIGNAL AND LIGHTING PLAN**  
 Indiana Avenue and Pierce Street  
 SCALE: 1" = 20'

ACCOUNT No.  
**X-518**  
 Sheet 1 of 1