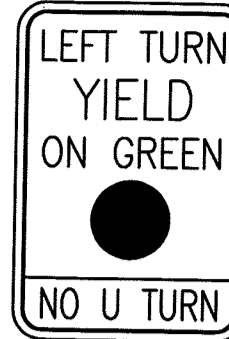
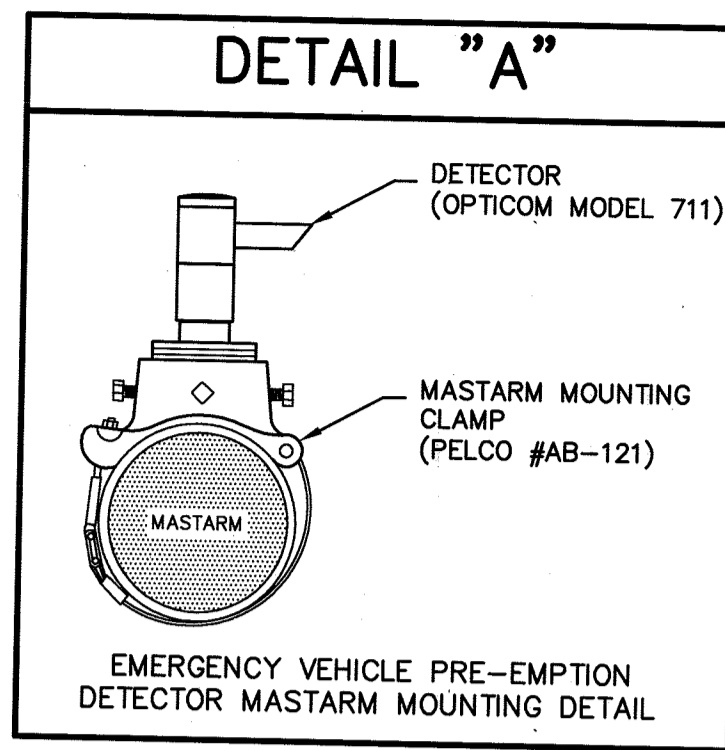


# CONDUCTOR TABLE

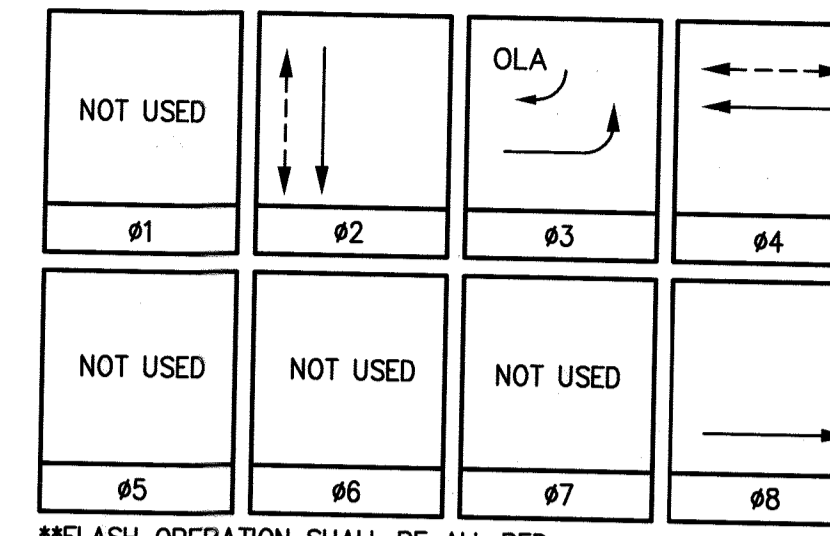
CONTROL FUNCTION	CONDUCTORS	CONDUCTOR RUNS					
		1	2	3	4	5	6
VEHICLE & PEDESTRIAN HEADS, PEDESTRIAN PUSH BUTTONS, SPARES & COMMONS	12 CSC	2	3	2	2	3	7
	3 CSC	1	2	1	2	3	6
ITERIS VIDEO DETECTION	COAXIAL	1	2				3
	POWER CABLE	1	2				3
I.I.S.N.S.	#12	2	2		2	2	3
LUMINAIRES	#8	2	2				
SIGNAL SERVICE	#6				2	2	2
VEHICLE PREEMPTION	#20/3	1	2				3
TRANSCIVER	CAT-5						1
CONDUIT SIZE		3"	3"	3"	3"	3"	2-4"

**NOTE:** 1. SIGNAL SYSTEM SHALL HAVE ALL NEW CABLES, CONDUCTORS AND CONDUIT.  
2. SEE SPECIAL PROVISIONS FOR ADDITIONAL INFORMATION ON CSC CABLE.



R10-12(MOD)

# PHASE DIAGRAM



\*\*FLASH OPERATION SHALL BE ALL RED.

# EQUIPMENT SCHEDULE

No.	TYPE	STANDARD			LUMINAIRE LED	IISNS LEGEND	SIGNAL MOUNTING			PPB PHASE
		HGT.	SIG. M.A.	LUM. M.A.			VEHICLE	PED	AUDIBLE	
(A)	15-TS	30'		12'	250W					#4
(B)	1A	10'								
(C)	26-4-100	30'	40'	12'	250W	Via Vista	2-MAS	TV-2-T	SP-1-T	((C))
(D)	19-4-100	30'	30'	12'	250W	Canyon Crest	MAS	SV-2-TD	SP-1-T	((P))
(E)	19-4-100	30'	25'	12'	250W	Via Vista	MAS	SV-1-T	SP-1-T	((C))
(F)	1A	7'								#4

PEDESTRIAN AUDIBLES: C=CUCKOO (NORTH/SOUTH), P=PEEP PEEP (EAST/WEST)

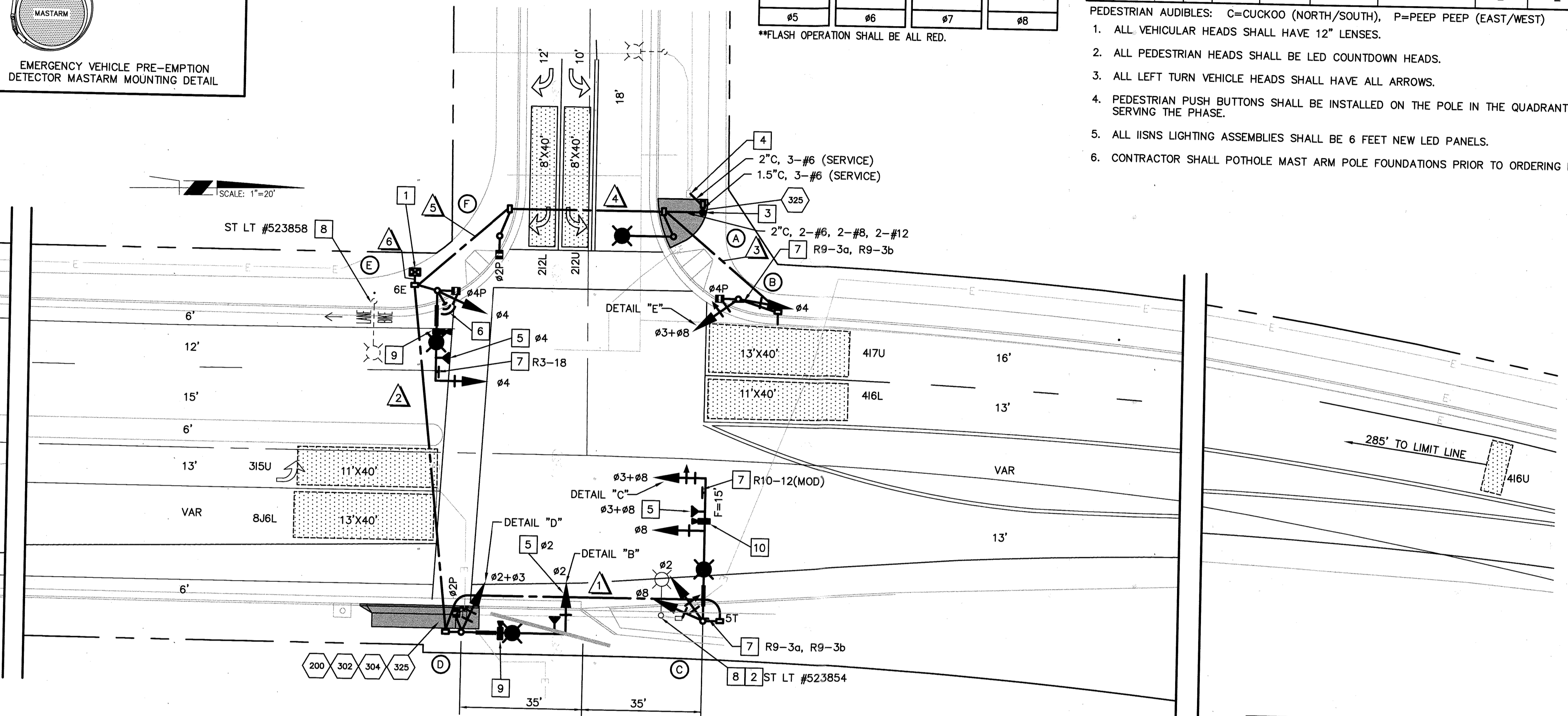
- ALL VEHICULAR HEADS SHALL HAVE 12" LENSES.
- ALL PEDESTRIAN HEADS SHALL BE LED COUNTDOWN HEADS.
- ALL LEFT TURN VEHICLE HEADS SHALL HAVE ALL ARROWS.
- PEDESTRIAN PUSH BUTTONS SHALL BE INSTALLED ON THE POLE IN THE QUADRANT NEAREST THE CROSSWALK SERVING THE PHASE.
- ALL IISNS LIGHTING ASSEMBLIES SHALL BE 6 FEET NEW LED PANELS.
- CONTRACTOR SHALL POTHOLE MAST ARM POLE FOUNDATIONS PRIOR TO ORDERING POLES AND MAST ARMS.

# CANYON CREST DRIVE

285' TO BACK OF X-WALK

8J6U

# VIA VISTA DRIVE

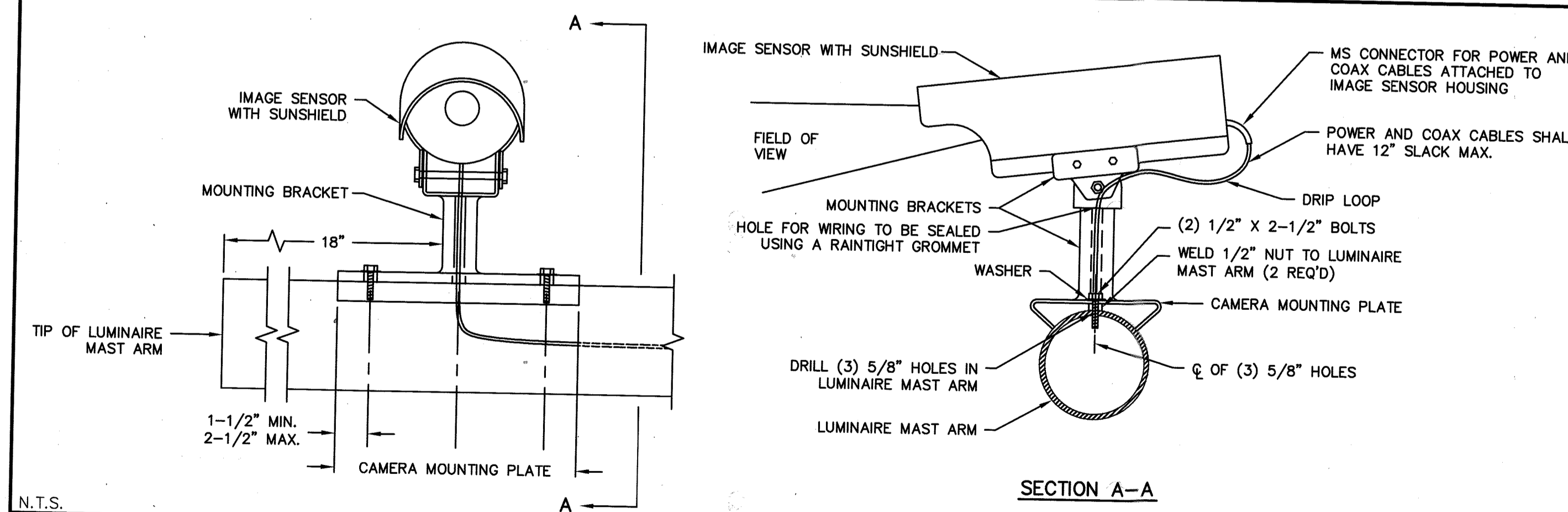


# CONSTRUCTION NOTES:

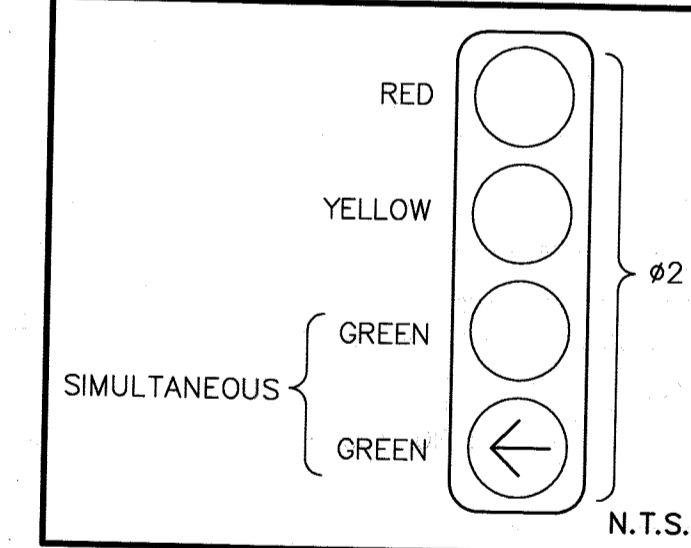
- CONTRACTOR SHALL CONSTRUCT (TYPE 332 CABINET) FOUNDATION. FURNISH AND INSTALL MODEL CONTROLLER ASSEMBLY IN MODEL 332 ANODIZED ALUMINUM CABINET. COMPLETE WITH DETECTION SHOWN AND AUXILIARY EQUIPMENT WITHIN A TYPE 332 CABINET PER CITY OF RIVERSIDE SPECIFICATIONS. CONTRACTOR SHALL FURNISH AND INSTALL A RACK MOUNTED 17-INCH FLIP-UP LCD COLOR VIDEO ITERIS MONITOR PER THE SPECIAL PROVISIONS.
- CONTRACTOR SHALL BE RESPONSIBLE FOR ALL WORK. CONTRACTOR SHALL CONTACT ATUL PARIKH AT 951-826-5493 TO COORDINATE RELOCATION OF EXISTING WI-FI EQUIPMENT ONTO POLE (D).
- CONTRACTOR SHALL FURNISH AND INSTALL ELECTRICAL 1A SERVICE POLE PER CITY OF RIVERSIDE STANDARD DRAWING No. 667. CONTRACTOR SHALL COORDINATE WITH CITY OF RIVERSIDE SIGNAL MAINTENANCE SECTION AT 951-351-6098 TO OBTAIN A BREAKER CAN.
- CONTRACTOR SHALL CONTACT AND COORDINATE WITH ELECTRICAL UTILITY DEPARTMENT AT (951) 826-5452 FOR ELECTRICAL SERVICE A MINIMUM OF SIX WEEKS PRIOR TO TRAFFIC SIGNAL TURN ON.
- FURNISH AND INSTALL ONE (1) GTI MODEL No. 711 (OR CITY-APPROVED EQUAL) EMERGENCY VEHICLE PRE-EMPTION DETECTOR ASSEMBLY (INCLUDING MOUNTING HARDWARE AND CABLE) FOR EACH DIRECTION, OR OPTICOM MODEL No. 722 (DUAL DIRECTION) AS SHOWN ON PLAN. E.V.P.E. SHALL BE MOUNTED ON THE MAST ARM PER DETAIL "A".
- THE CONTRACTOR SHALL INSTALL A CITY FURNISHED TRANSCIVER. CONTRACTOR SHALL COORDINATE WITH THE CITY OF RIVERSIDE TRAFFIC SECTION AT 951-826-5366.
- INSTALL SIGN AS NOTED.
- CONTRACTOR SHALL CONTACT PUBLIC UTILITIES AT 951-826-5484 TO COORDINATE THE REMOVAL OF SALVAGING OF THE STREET LIGHT. CONTRACTOR FORCES SHALL BE RESPONSIBLE FOR ALL WORK INCLUDING COMPLETE FOUNDATION REMOVAL, FILL AND REPAIR OF ANY CONCRETE AND ELECTRICAL WORK.
- INSTALL VIDEO DETECTION CAMERA ON LUMINAIRE MAST ARM PER DETAIL. CAMERAS SHALL BE PROGRAMMED BY THE CONTRACTOR. SEE SPECIAL PROVISIONS FOR SPECIFICATIONS.
- INSTALL VIDEO DETECTION CAMERA ON SIGNAL MAST ARM WITH A 5-FT RISER ARM. CAMERA SHALL BE PROGRAMMED BY THE CONTRACTOR. SEE SPECIAL PROVISIONS FOR SPECIFICATIONS.
- CONSTRUCT P.C.C. CONCRETE CURB PER CITY OF RIVERSIDE STANDARD DRAWING NO. 200; MATCH EXISTING.
- CONSTRUCT WHEELCHAIR RAMP PER CITY OF RIVERSIDE STANDARD DRAWING NO. 304.
- CONSTRUCT P.C.C. CONCRETE SIDEWALK PER CITY OF RIVERSIDE STANDARD DRAWING NO. 325.

**NOTE:** 1. SEE TITLE SHEET FOR TRAFFIC SIGNAL GENERAL NOTES.

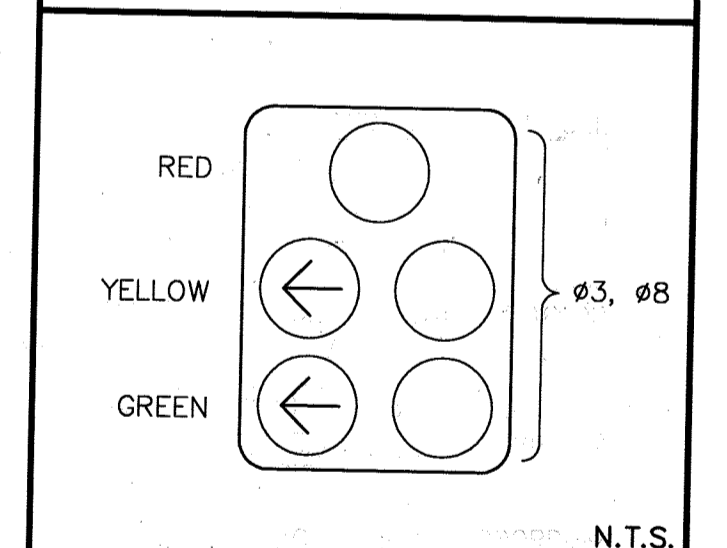
# VIDEO DETECTION MAST ARM MOUNTING DETAIL



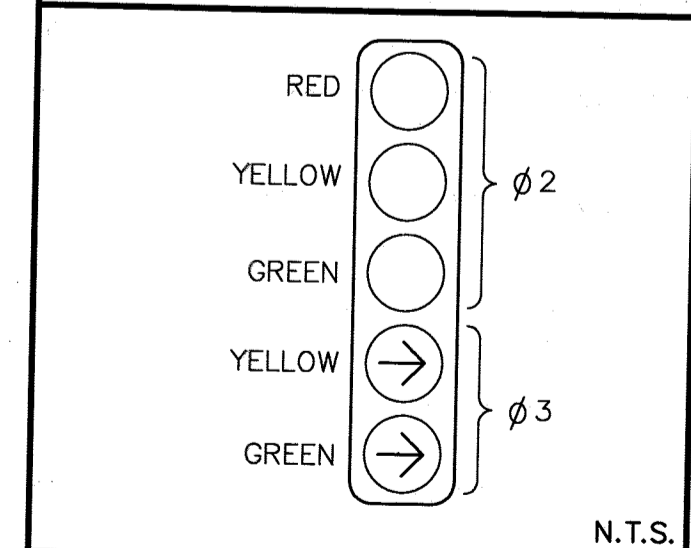
# DETAIL "B"



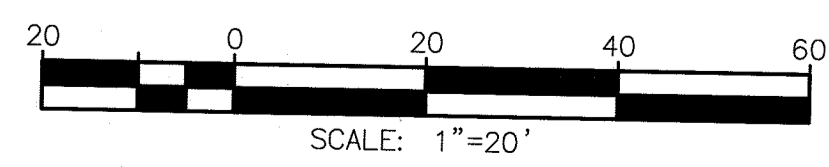
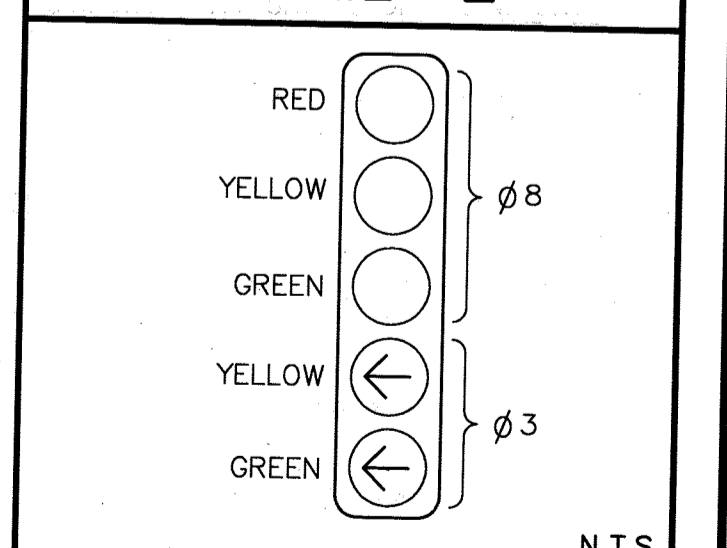
# DETAIL "C"



# DETAIL "D"



# DETAIL "E"



Under Ground Service Alert of Southern California  
Call: TOLL FREE 1-800-227-2600  
TWO WORKING DAYS BEFORE YOU DIG

ENGINEER IN RESPONSIBLE CHARGE  
GILBERT M. HERNANDEZ  
R.C.E. No. 69170 EXPIRES: 6-30-14  
DATE: 2-19-14

REGISTERED PROFESSIONAL ENGINEER  
GILBERT M. HERNANDEZ  
No. 69170  
Exp. 06-30-14  
CIVIL  
STATE OF CALIFORNIA

Controller Change  
DESIGNED BY: MAC DRAWN BY: MAC CHECKED BY: GMH

CITY OF RIVERSIDE, CALIFORNIA  
DEPARTMENT OF PUBLIC WORKS  
APPROVED BY: [Signature]  
DATE: 3/12/14

TRAFFIC SIGNAL PLAN  
CANYON CREST DRIVE  
AT VIA VISTA DRIVE  
SCALE: 1" = 20'

X-527  
SHEET 1 OF 1  
FILE NAME: X527.DWG