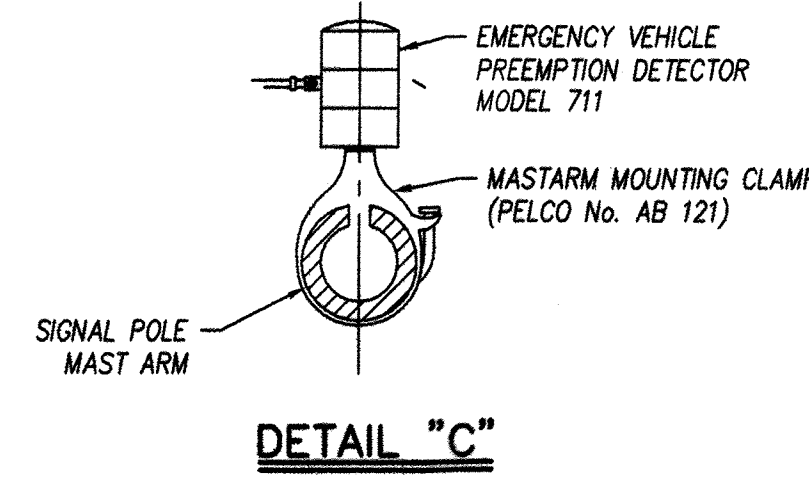
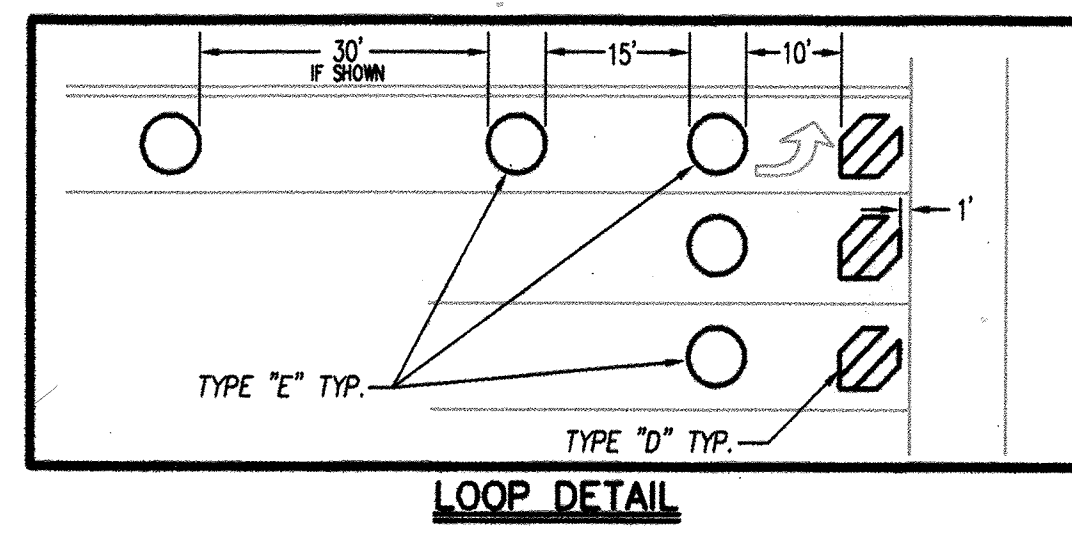
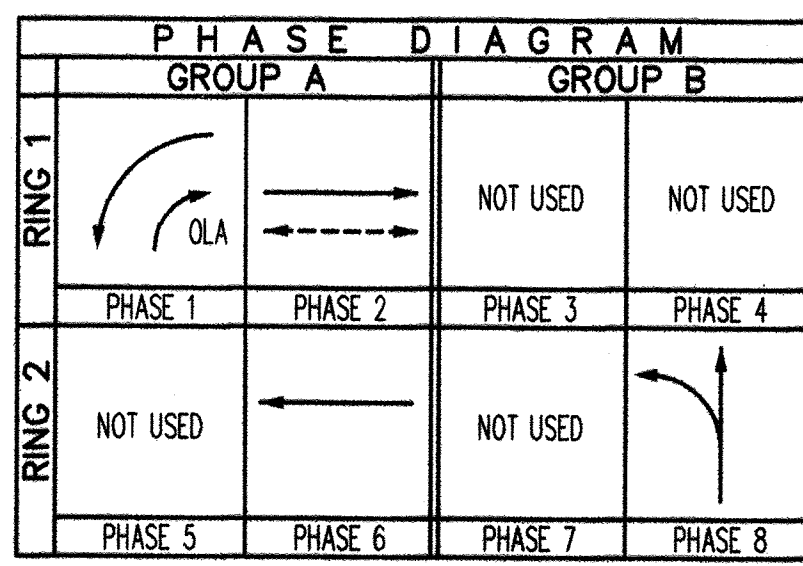


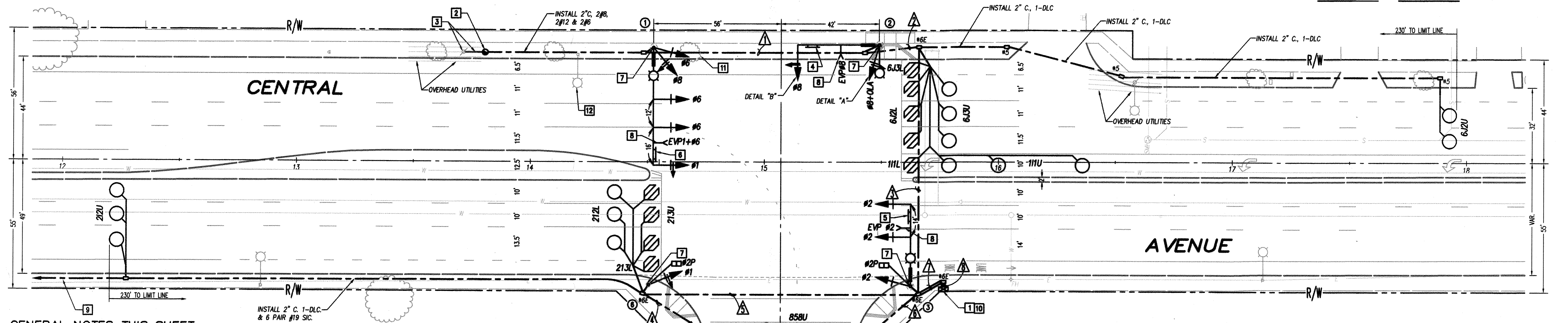
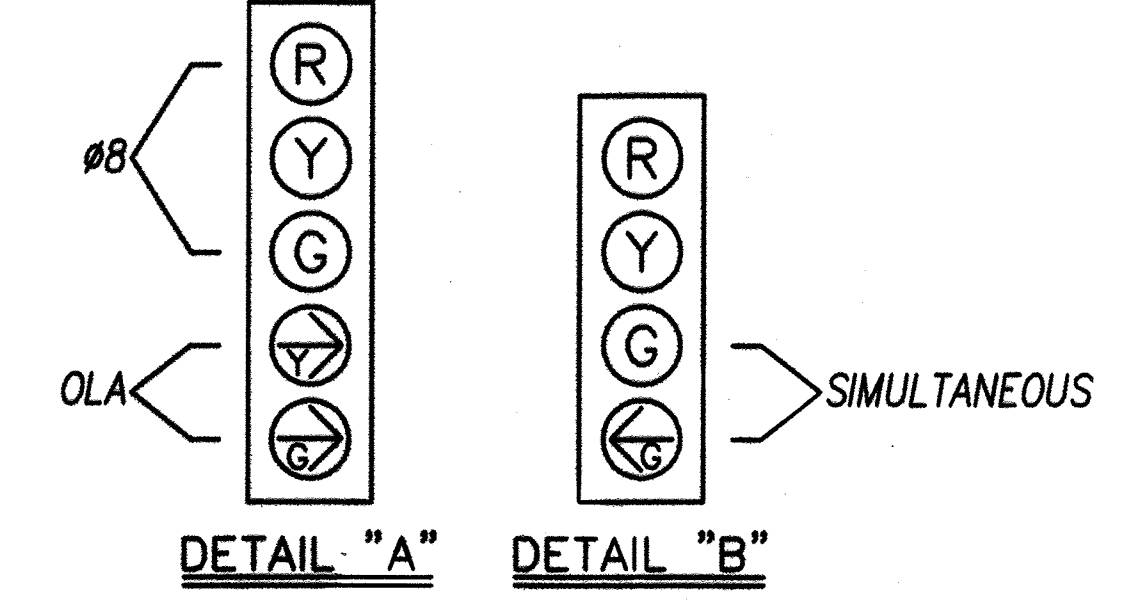
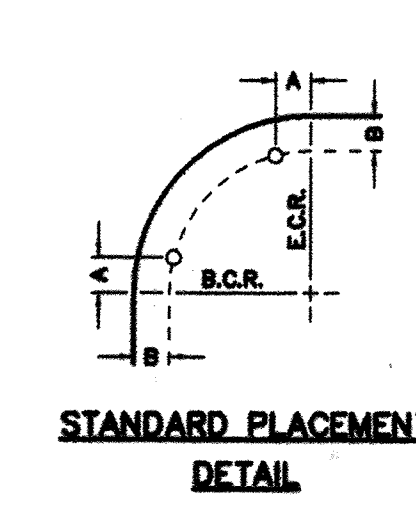
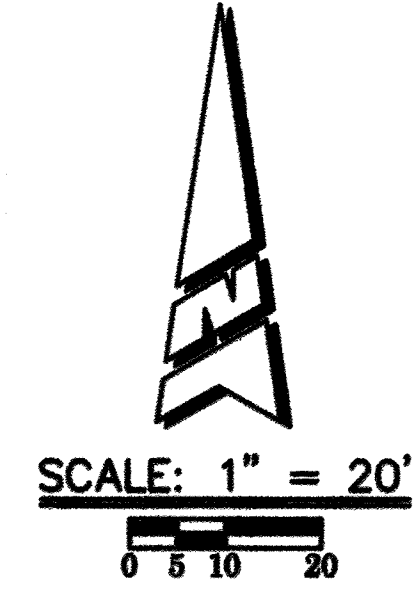
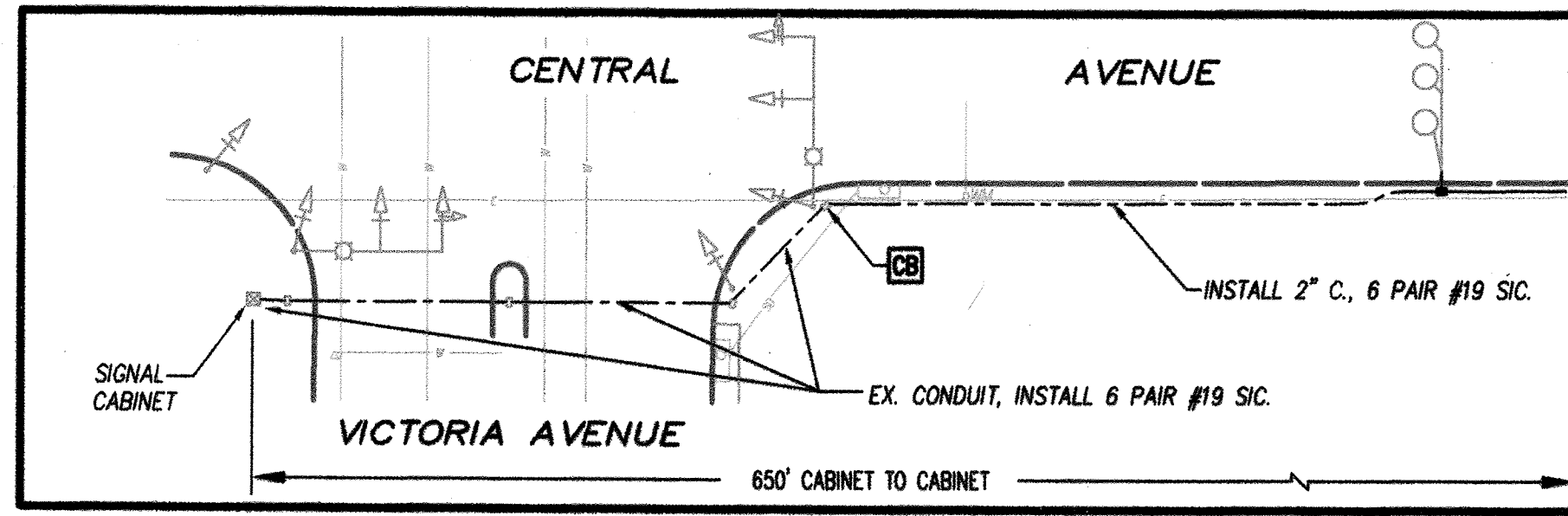
CONDUCTOR AND CONDUIT SCHEDULE		RUN NO.							
AWG	CIRCUIT	1	2	3	4	5	6	7	8
12 COND. CABLE	POLE ①	1/0	1/0	1/0	-	-	-	1/0	1/0
	POLE ②	-	1/4	1/4	-	-	-	1/4	1/4
	POLE ③	-	-	-	-	-	-	-	-
	POLE ④	-	-	-	-	-	-	1/1	1/1
	POLE ⑤	-	-	-	-	1/1	1/1	-	-
	POLE ⑥	-	-	-	-	-	-	1/0	1/0
3 COND. CABLE	TOTAL	1/0	2/1	2/1	1/1	2/1	1/1	6/4	6/4
#6	SIGNAL SERVICE	2	2	2	-	-	-	2	2
#10	LUMINAIRE	2	2	2	2	2	-	-	-
#12	I.I.S.N.S.	2	2	2	-	-	-	2	2
TYPE B	#1	-	-	-	-	-	-	2	2
	#2	-	-	-	-	-	-	4	4
	#6	-	-	-	-	-	-	4	4
	#8	-	-	-	-	-	-	4	4
DLC	TOTAL	0	0	0	0	0	0	14	14
EVP CABLE (GTT TYPE 138)	#1	1	2	2	0	0	0	3	3
6 PAIR #19 SIC	-	-	-	-	-	-	-	1	1
CONDUIT SIZE	#1	3"	4"	4"	3"	4"	3"	2-4	2-4
PERCENT FILL	#1	10%	11%	13%	8%	11%	11%	19%	19%

\* = FOR FUTURE USE.



STANDARD		POLE SCHEDULE									
TYPE	HT.	SIG.	LUM.	H.P.S.V.	TYPE	PHASE	QUAD	VEHICLE	SIGNAL MOUNTING	PLACEMENT	I.I.S.N.S. (L.E.D.)
29-5-100	27	50'	15'	250 W	-	-	-	MAS, MAS, MAS, SY-2-T	-	-	Per Plan
24-3-100	27	35'	15'	250 W	-	-	-	MAS-4B, SY-1-T	-	-	Per Plan
24-4-100	30	35'	15'	250 W	-	-	-	MAS, MAS, SY-1-T	SP-1-T	(P)	10'
1-A	10	-	-	-	B	2	N	TV-1-T	-	-	10'
15TS	30	-	-	15'	B	2	N	-	-	-	11'
1-A	10	-	-	-	-	-	-	TV-1-T	SP-1-T	(P)	11'

ALL EQUIPMENT IS NEW.  
 \* = POTHOLE MAST ARM POLE FOUNDATIONS PRIOR TO ORDERING POLES AND MAST ARMS  
 \* = PEDESTRIAN VEHICLE INDICATIONS SHALL BE COUNTDOWN TYPE  
 (C) OR (P) - INDICATES AUDITORY PEDESTRIAN SIGNAL TO BE INSTALLED, (C) INDICATES CUCKOO SOUND, (P) INDICATES PEEP-PEEP SOUND  
 ▲ = PER CITY STANDARDS  
 ● = ROTATE LUMINAIRE ARM 90° COUNTERCLOCKWISE  
 ● = NOTE SPECIAL POLE HEIGHT OF 27'



**GENERAL NOTES THIS SHEET:**

- ALL ITEMS FURNISHED AND ALL WORK TO BE DONE SHALL CONFORM TO THE REQUIREMENTS OF: THE STATE OF CALIFORNIA, DEPARTMENT OF TRANSPORTATION (CALTRANS) STANDARD PLANS AND SPECIFICATIONS, DATED MAY 2008; THE CALIFORNIA MANUAL ON UNIFORM TRAFFIC CONTROL DEVICES ADOPTED SEPTEMBER 2006; AND THE SPECIAL PROVISIONS.
- UTILITIES SHOWN ON THE PLAN ARE CORRECT AND ACCURATE TO THE EXTENT OF AVAILABLE RECORDS. THE CONTRACTOR IS REQUIRED TO TAKE STEPS TO ASCERTAIN THE EXACT LOCATION OF ALL KNOWN SUBSTRUCTURES PRIOR TO DOING WORK THAT MAY DAMAGE OR INTERFERE WITH SUCH FACILITIES ("UNDERGROUND SERVICE ALERT")
- THE CONTRACTOR SHALL OBTAIN ALL NECESSARY PERMITS TO NOTIFY ALL AFFECTED AGENCIES AND THE RIVERSIDE UTILITY COMPANIES A MINIMUM OF 48 HOURS PRIOR TO START CONSTRUCTION.
- UNLESS SHOWN OTHERWISE, INDUCTIVE LOOPS SHALL BE 6" DIAMETER WITH 10', 15' AND 30' SPACING IN THE DIRECTION OF TRAVEL. NECESSARY STRIPING SHALL BE LOCATED PRIOR TO POSITIONING LOOPS. LOOPS SHALL BE SEALED WITH HOT MELT SEALANT.
- CONDUIT SCHEDULE IS FURNISHED AS AN INSTALLATION GUIDE ONLY. IT SHALL BE THE CONTRACTORS RESPONSIBILITY TO PROVIDE THE CORRECT CONDUCTORS REQUIRED FOR THE INTENDED OPERATION.
- CONDUIT BETWEEN ADJOINING PULL BOXES SHALL BE 2.5" UNLESS SHOWN OTHERWISE. ALL CONDUIT AND FITTINGS SHALL BE RIGID METAL. UNLESS SHOWN OTHERWISE (BURIED IN A MINIMUM OF 30" OF COVER IN THE STREET AND PARKWAY).
- TRAFFIC SIGNAL INTERCONNECT (SIC) SHALL BE 2" UNLESS SHOWN OTHERWISE, BURIED IN A MINIMUM OF 30" OF COVER IN THE STREET AND PARKWAY. NO. 6 PULL BOXES SHALL BE SPACED AT 400' AND THE MAXIMUM SIC BENDING RADIUS SHALL NOT EXCEED 45'. SIC SHALL ONLY INCLUDE SIGNAL INTERCONNECT CONDUCTORS.
- UNDERGROUND SIGNAL CONDUCTORS SHALL NOT BE SPLICED.
- PULL BOXES SHALL BE NO. 6, UNLESS OTHERWISE NOTED ON THE PLAN. SIGNAL INTERCONNECT PULL BOXES SHALL BE NO. 6 WITH THE PULL BOX LID LABELED "COMMUNICATIONS". PULL BOXES SHALL BE SPACED AT 400' MAXIMUM.
- PULL BOXES SHALL NOT BE LOCATED IN OR WITHIN 1' OF ANY CURB ACCESS RAMP OR DRIVEWAY.
- THE CONTRACTOR SHALL VERIFY WITH THE ENGINEER THE PRECISE FIELD LOCATIONS OF ALL TRAFFIC SIGNAL EQUIPMENT PRIOR TO THE INSTALLATION.
- ALL LANDSCAPING WHICH IS DAMAGED BY CONSTRUCTION ACTIVITIES SHALL BE REPAIRED OR REPLACED TO THE SATISFACTION OF THE CITY AND THE PROPERTY OWNER.
- ALL SIGNS SHALL BE FABRICATED WITH "3M ASTM TYPE 11" REFLECTIVE SHEETING OR APPROVED EQUAL.
- VEHICLE HEADS SHALL BE 12" LED TYPE. THE HOUSING, BACKPLATES AND VISORS SHALL BE METAL
- INTERNALLY ILLUMINATED STREET NAME SIGNS (IISNS) SHALL BE TYPE A. STREET NAME LEGENDS SHALL BE UPPER/LOWER CASE AND SHALL INCLUDE STREET ADDRESSES AND ROAD NAME SUFFIXES. (PANELS SHALL BE "3M ASTM TYPE 11")
- SALVAGED TRAFFIC SIGNAL EQUIPMENT SHALL BE DELIVERED TO THE CITY OF RIVERSIDE TRAFFIC SIGNAL MAINTENANCE YARD.
- DAMAGED SIDEWALK CONCRETE SHALL BE REPLACED PER CITY OF RIVERSIDE STANDARD.
- THE CONTRACTOR SHALL REMOVE ALL UNUSED PULL BOXES AND RE-PAVE SURROUNDING AREA TO MATCH EXISTING OR PROPOSED GRADE. ALL UNUSED CONDUIT SHALL BE ABANDONED AND CAPPED ONCE UNUSED CONDUCTORS ARE REMOVED.

**CONSTRUCTION NOTES THIS SHEET:**

- CONTRACTOR SHALL CONSTRUCT (TYPE 332 CABINET) FOUNDATION. CONTRACTOR SHALL FURNISH AND INSTALL MODEL 170-ATC-CF CONTROLLER ASSEMBLY IN MODEL 332 ANODIZED ALUMINUM CABINET, COMPLETE WITH DETECTION SHOWN AND AUXILIARY EQUIPMENT WITHIN A TYPE 332 CABINET PER CITY OF RIVERSIDE SPECIFICATIONS.
- SUPPLY AND INSTALL 1A SERVICE POLE PER CITY OF RIVERSIDE STANDARD DRAWING No. 667.
- INSTALL 1.5" RIDGED METAL CONDUIT, 3-#6 CONDUCTORS BETWEEN 1A SERVICE POLE AND BASE OF POWER POLE PER CITY OF RIVERSIDE PUBLIC UTILITY SPECIFICATION. CONTACT (951) 826-5489.
- INSTALL 36"x36" R73-6 SIGN AS SHOWN PER STATE STANDARD PLAN ES-6T, DETAIL "U".
- INSTALL 30"x30" R3-18 SIGN AS SHOWN PER STATE STANDARD PLAN ES-6T, DETAIL "U".
- INSTALL 30"x30" R3-4 SIGN AS SHOWN PER STATE STANDARD PLAN ES-6T, DETAIL "U".
- INSTALL R9-3a AND R9-3b (LEFT OR RIGHT AS APPROPRIATE) "NO PED XING" SIGNS ON SIGNAL POLE.
- FURNISH AND INSTALL GLOBAL TRAFFIC TECHNOLOGIES MODEL 711 OPTICAL DETECTOR, MOUNTING HARDWARE PER DETAIL "C". (PHASES AS SHOWN) AND GTT MODEL 138 DETECTOR CABLE. OPTICAL DETECTOR LOCATIONS TO BE APPROVED BY ENGINEER PRIOR TO MOUNTING.
- INSTALL 1-6 PAIR #19 SIC FROM POLYTECHNIC HIGH SCHOOL DRIVEWAY CONTROLLER CABINET TO VICTORIA AVENUE CONTROLLER CABINET UNSPICED. SEE INTERCONNECT DETAIL.
- CONTRACTOR SHALL PROVIDE AND INSTALL AN UNINTERRUPTED POWER SUPPLY (UPS) UNIT PER THE SPECIAL PROVISIONS THE UPS UNIT & BATTERIES SHALL BE INSTALLED IN A CABINET, EXTERNALLY MOUNTED TO THE CONTROLLER CABINET.
- TREE TO BE REMOVED BY CONTRACTOR.
- STREET LIGHT TO BE REMOVED BY CONTRACTOR.

**POLYTECHNIC HIGH SCHOOL DRIVEWAY**

**DIG ALERT**  
 DIAL TOLL FREE  
 1-800-422-4133  
 AT LEAST TWO DAYS BEFORE YOU DIG  
 UNDERGROUND SERVICE ALERT OF SOUTHERN CALIFORNIA

REGISTERED PROFESSIONAL ENGINEER  
 GERALD J. STOK  
 No. C052822  
 Exp. 12-31-12  
 CIVIL  
 STATE OF CALIFORNIA

PLANS PREPARED BY:  
**HARTZOG CRABILL, Inc.**  
 Consulting Traffic Engineers  
 275 Centennial Way, Suite 208  
 Tustin, California 92780  
 714.731.9455 fax: 714.731.9498  
 www.hartzog-crabill.com  
 3/21  
 GERALD J. STOK R.C.E. No. C052822 Exp. 12-31-12

MARK REVISIONS APPR. DATE  
 DESIGNED BY: TMH DRAWN BY: TMH CHECKED BY: TGH

**CITY OF RIVERSIDE**  
 DEPARTMENT OF PUBLIC WORKS  
 APPROVED BY: DATE: 3/21/11  
 PRINCIPAL ENGINEER: [Signature]  
 TRAFFIC DIVISION: [Signature]  
 ENGINEERING MANAGER: [Signature]  
 CONTRACT ADMINISTRATOR: [Signature]  
 APPROVED BY: DATE: 3/28/11  
 CITY ENGINEER: [Signature]

**TRAFFIC SIGNAL AND LIGHTING PLAN**  
 Central Avenue and Polytechnic High School Driveway  
 SCALE: 1" = 20'

ACCOUNT No. **X-528**  
 Sheet 1 of 1