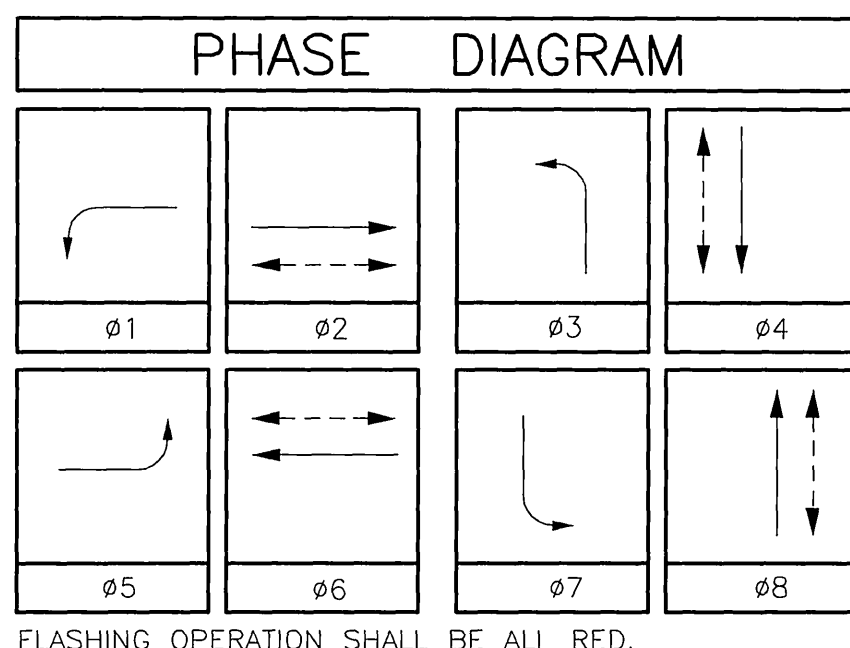
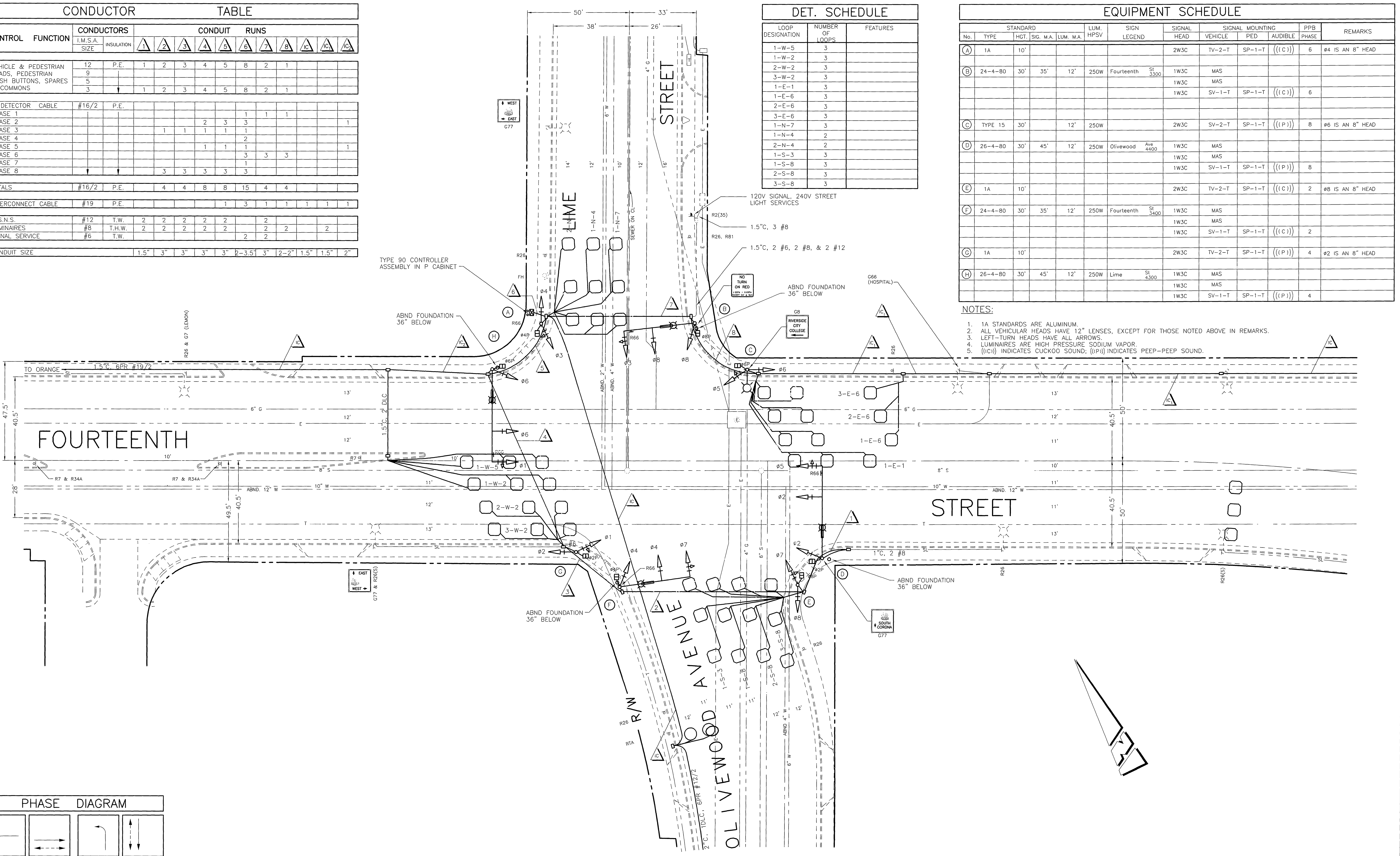


CONDUCTOR		TABLE											
CONTROL FUNCTION	CONDUCTORS		CONDUIT RUNS										
	I.M.S.A. SIZE	INSULATION	1	2	3	4	5	8	2	1			
VEHICLE & PEDESTRIAN HEADS, PEDESTRIAN PUSH BUTTONS, SPARES & COMMONS	12	P.E.	1	2	3	4	5	8	2	1			
	9												
	5												
	3		1	2	3	4	5	8	2	1			
DETECTOR CABLE	#16/2	P.E.											
PHASE 1								1	1	1			
PHASE 2						2	3	3				1	
PHASE 3			1	1	1	1	1	1					
PHASE 4								2					
PHASE 5						1	1	1				1	
PHASE 6								3	3	3			
PHASE 7								1					
PHASE 8			3	3	3	3	3	3					
TOTALS	#16/2	P.E.	4	4	8	8	15	4	4				
INTERCONNECT CABLE	#19	P.E.				1	3	1	1	1	1	1	
I.J.S.N.S.	#12	T.W.	2	2	2	2	2	2	2				
LUMINAIRES	#8	T.H.W.	2	2	2	2	2	2	2			2	
SIGNAL SERVICE	#6	T.W.				2	2						
CONDUIT SIZE			1.5"	3"	3"	3"	3"	2-3.5"	3"	2-2"	1.5"	1.5"	2"

DET. SCHEDULE		
LOOP DESIGNATION	NUMBER OF LOOPS	FEATURES
1-W-5	3	
1-W-2	3	
2-W-2	3	
3-W-2	3	
1-E-1	3	
1-E-6	3	
2-E-6	3	
3-E-6	3	
1-N-7	3	
1-N-4	2	
2-N-4	2	
1-S-3	3	
1-S-8	3	
2-S-8	3	
3-S-8	3	

EQUIPMENT SCHEDULE										
No.	TYPE	STANDARD		LUM. HPSV	SIGN LEGEND	SIGNAL HEAD	SIGNAL MOUNTING		PPB PHASE	REMARKS
		HGT.	SIG. M.A.				VEHICLE	PED		
(A)	1A	10'				2W3C	TV-2-T	SP-1-T	((C))	6 #4 IS AN 8" HEAD
(B)	24-4-80	30'	35'	12'	250W	Fourteenth St 3300	1W3C	MAS		
							1W3C	MAS		
							1W3C	SV-1-T	SP-1-T	((C))
(C)	TYPE 15	30'		12'	250W		2W3C	SV-2-T	SP-1-T	((P))
(D)	26-4-80	30'	45'	12'	250W	Olivewood Ave 4400	1W3C	MAS		
							1W3C	MAS		
							1W3C	SV-1-T	SP-1-T	((P))
(E)	1A	10'				2W3C	TV-2-T	SP-1-T	((C))	2 #8 IS AN 8" HEAD
(F)	24-4-80	30'	35'	12'	250W	Fourteenth St 3300	1W3C	MAS		
							1W3C	MAS		
							1W3C	SV-1-T	SP-1-T	((C))
(G)	1A	10'				2W3C	TV-2-T	SP-1-T	((P))	4 #2 IS AN 8" HEAD
(H)	26-4-80	30'	45'	12'	250W	Lime St 4300	1W3C	MAS		
							1W3C	MAS		
							1W3C	SV-1-T	SP-1-T	((P))

- NOTES:
- 1A STANDARDS ARE ALUMINUM.
  - ALL VEHICULAR HEADS HAVE 12" LENSES, EXCEPT FOR THOSE NOTED ABOVE IN REMARKS.
  - LEFT-TURN HEADS HAVE ALL ARROWS.
  - LUMINAIRES ARE HIGH PRESSURE SODIUM VAPOR.
  - ((IC)) INDICATES CUCKOO SOUND; ((P)) INDICATES PEEP-PEEP SOUND.



CITY OF RIVERSIDE, CALIFORNIA DEPARTMENT OF PUBLIC WORKS		TRAFFIC SIGNAL		ACCT. NO. 230-541600-440223-35056
APPROVED BY _____ BY _____ DATE _____		APPROVED BY _____		X-105 SHEET 1 OF 1
PRINCIPAL ENGINEER		DIRECTOR OF PUBLIC WORKS		
SIGNALIZATION AS-BUILT TRC 6/21/96		DATE _____		SCALE: 1" = 20'
MARK REVISIONS APPR. DATE		DATE _____		
DESIGNED BY _____ DRAWN BY _____ CHECKED BY _____		PUBLIC UTILITIES		FILE NAME: X105.DWG

CONDUCTOR		TABLE												
CONTROL FUNCTION	CONDUCTORS		CONDUIT RUNS											
	I.M.S.A. SIZE	INSULATION	1	2	3	4	5	6	7	8	9	10	11	12
VEHICLE & PEDESTRIAN HEADS, PEDESTRIAN PUSH BUTTONS, SPARES & COMMONS	12	P.E.	1	2	3	4	5	6	7	8	9	10	11	12
DETECTOR CABLE	#16/2	P.E.												
PHASE 1														
PHASE 2														
PHASE 3														
PHASE 4														
PHASE 5														
PHASE 6														
PHASE 7														
PHASE 8														
TOTALS	#16/2	P.E.	4	4	8	8	15	4	4					
INTERCONNECT CABLE	#19	P.E.												
I.I.S.N.S.	#12	T.W.	2	2	2	2	2	2	2	2	2	2	2	2
LUMINAIRES	#8	T.H.W.	2	2	2	2	2	2	2	2	2	2	2	2
SIGNAL SERVICE	#6	T.W.												
CONDUIT SIZE			1.5"	3"	3"	3"	3"	2-3.5"	3"	2-2"	1.5"	1.5"	2"	
			(E)	(E)	(E)	(E)	(E)	(E)	(E)	(E)	(E)	(E)	(E)	(E)

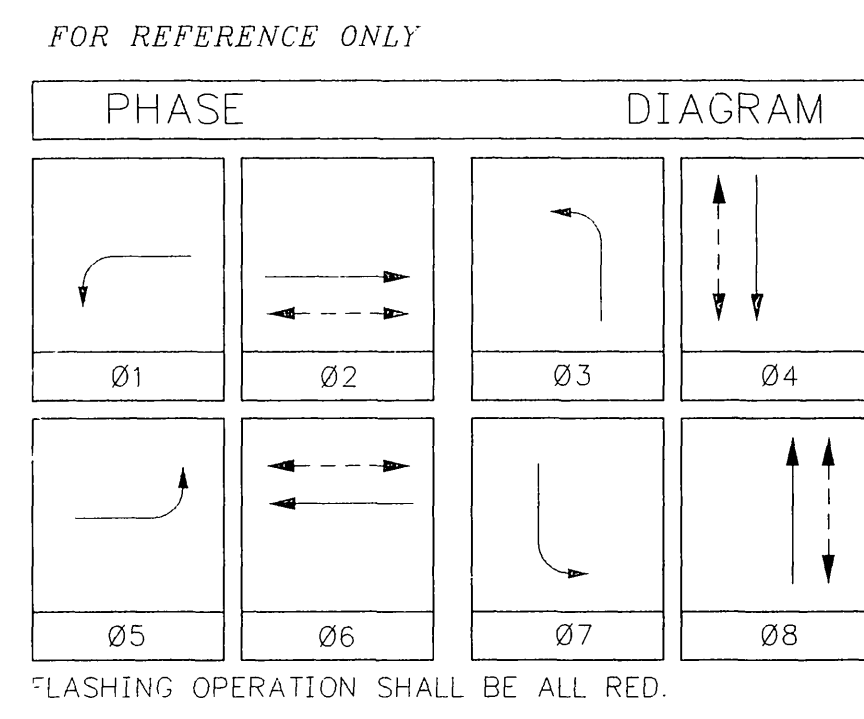
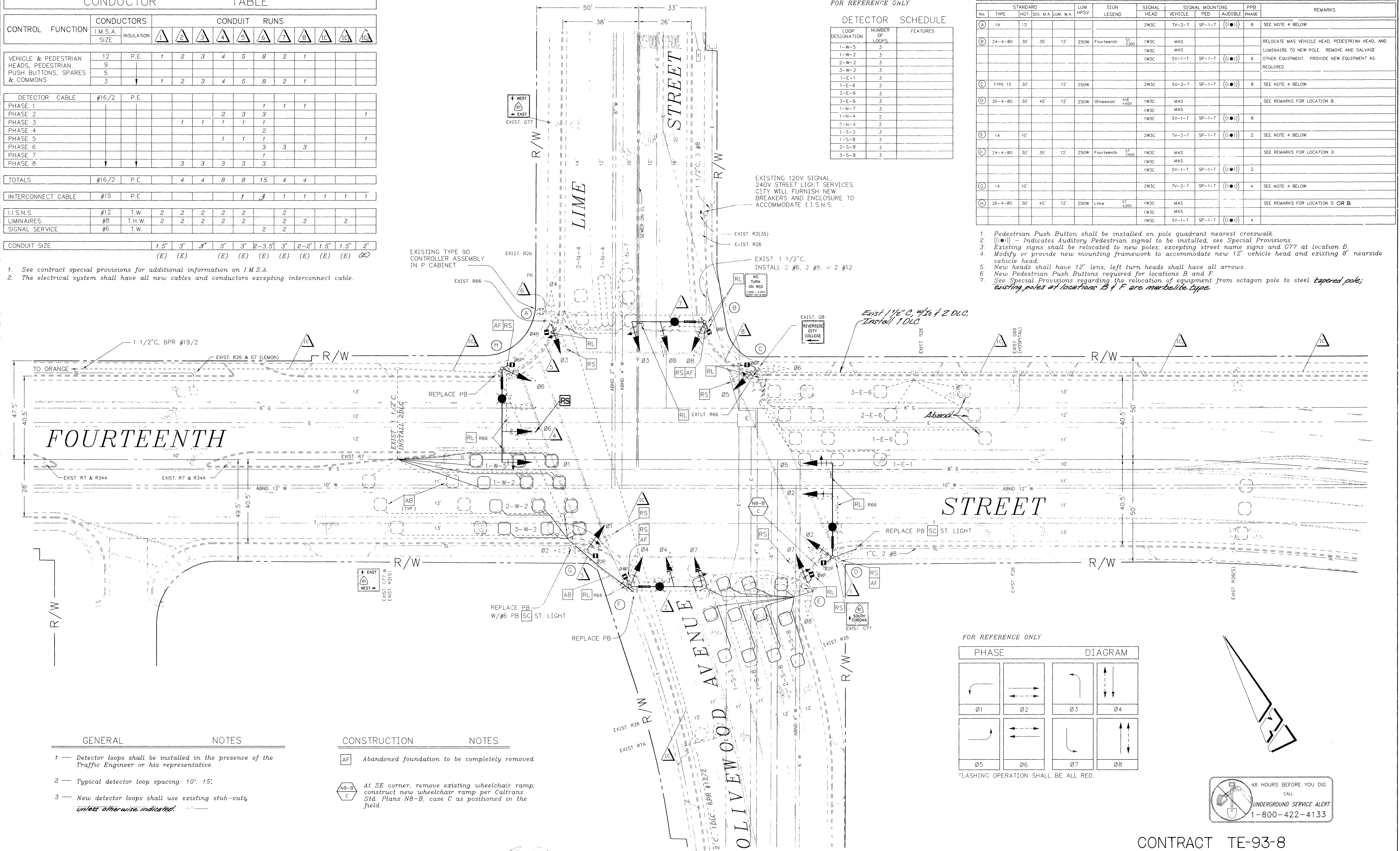
- See contract special provisions for additional information on I.M.S.A.
- The electrical system shall have all new cables and conductors excepting interconnect cable.

FOR REFERENCE ONLY

DETECTOR SCHEDULE		
LOOP DESIGNATION	NUMBER OF LOOPS	FEATURES
1-W-5	3	
1-W-2	3	
2-W-2	3	
3-W-2	3	
1-E-1	3	
1-E-6	3	
2-E-6	3	
3-E-6	3	
1-N-7	3	
1-N-4	2	
2-N-4	2	
1-S-3	3	
1-S-8	3	
2-S-8	3	
3-S-8	3	

POLE SCHEDULE													
No.	TYPE	HGT.	SIG. M.A.	LUM. M.A.	LUM. HPSV	SIGN. LEGEND	SIGNAL HEAD	SIGNAL VEHICLE	SIGNAL MOUNTING PED	PPB PHASE	REMARKS		
(A)	1A	12'					2W3C	TV-2-T	SP-1-T	(101)	6	SEE NOTE 4 BELOW.	
(B)	24-4-80	30'	35'	12'	250W	Fourteenth St 300	1W3C	MAS				6	RELOCATE MAS VEHICLE HEAD, PEDESTRIAN HEAD, AND LUMINAIRE TO NEW POLE. REMOVE AND SALVAGE OTHER EQUIPMENT. PROVIDE NEW EQUIPMENT AS REQUIRED.
(C)	TYPE 15	30'		12'	250W		2W3C	SV-2-T	SP-1-T	(101)	8	SEE NOTE 4 BELOW.	
(D)	26-4-80	30'	45'	12'	250W	Olivewood Ave 4400	1W3C	MAS				8	SEE REMARKS FOR LOCATION B.
(E)	1A	10'					2W3C	TV-2-T	SP-1-T	(101)	2	SEE NOTE 4 BELOW.	
(F)	24-4-80	30'	35'	12'	250W	Fourteenth St 3400	1W3C	MAS				2	SEE REMARKS FOR LOCATION 3.
(G)	1A	10'					2W3C	TV-2-T	SP-1-T	(101)	4	SEE NOTE 4 BELOW.	
(H)	26-4-80	30'	45'	12'	250W	Lime St 3100	1W3C	MAS				4	SEE REMARKS FOR LOCATION D OR B.
							1W3C	SV-1-T	SP-1-T	(101)	4		

- Pedestrian Push Button shall be installed on pole quadrant nearest crosswalk.
- (101) - Indicates Auditory Pedestrian signal to be installed, see Special Provisions.
- Existing signs shall be relocated to new poles, excepting street name signs and C77 at location D.
- Modify or provide new mounting framework to accommodate new 12" vehicle head and existing 8" nearside vehicle head.
- New heads shall have 12" lens; left turn heads shall have all arrows.
- New Pedestrian Push Buttons required for locations B and F.
- See Special Provisions regarding the relocation of equipment from octagon pole to steel tapered pole; existing poles at locations B & F are marbleite type.



- GENERAL NOTES
- Detector loops shall be installed in the presence of the Traffic Engineer or his representative.
  - Typical detector loop spacing: 10', 15'.
  - New detector loops shall use existing stub-outs, unless otherwise indicated.

- CONSTRUCTION NOTES
- AF Abandoned foundation to be completely removed.
  - NB-B At SE corner, remove existing wheelchair ramp; construct new wheelchair ramp per Caltrans Std. Plans NB-B, case C as positioned in the field.



CONTRACT TE-93-8

ENGINEER IN RESPONSIBLE CHARGE RICHARD D. McGRATH R.C.E. No 31952 expires 12/31/96 DATE 5-17-93	CITY OF RIVERSIDE, CALIFORNIA DEPARTMENT OF PUBLIC WORKS APPROVED BY: [Signature] DATE: 5/17/93 P.W. INSPECTION: [Signature] DATE: 5/17/93 TRAFFIC DIVISION: [Signature] DATE: 5/17/93 CHIEF P.W. ENGR: [Signature] DATE: 5/17/93 PUBLIC UTILITIES: [Signature] DATE: 5/17/93	TRAFFIC SIGNAL REVISION <b>FOURTEENTH STREET          LIME STREET &amp;          OLIVEWOOD AVENUE</b>	ACCT. NO. <b>X-105</b> SHEET <b>2</b> OF <b>2</b> FILE NO.
		SCALE: 1" = 20' DATE: 12/17/93	