

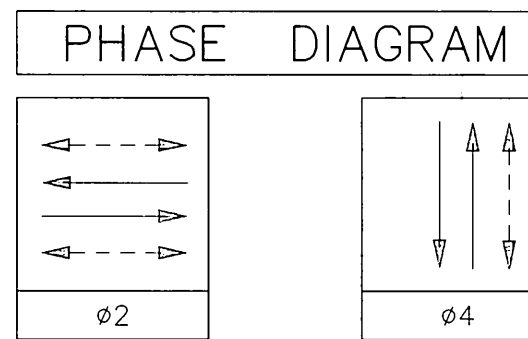
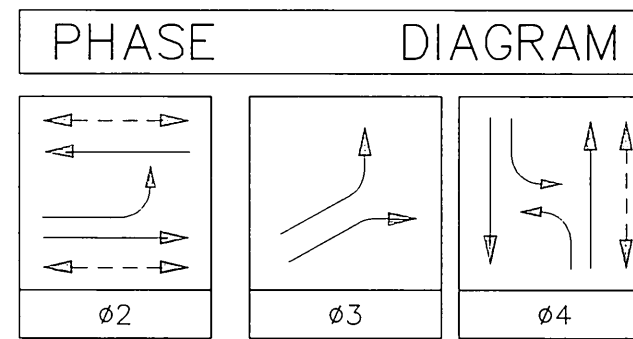
EQUIPMENT SCHEDULE

NO.	SIGNAL STANDARD			LUMINAIRE			I.I.S.N.S. LEGEND		SIGNAL MOUNTINGS		PPB PHASE	REMARKS
	TYPE	H'GHT	M.A.	M.A.	H.P.S.V.	VEHICLE	PEDESTRIAN	AUDIBLE				
(A)	II(E)	20'	20'(E)						MAS(E) SV-1-T(E)			
(B)	1A(E)	10'							TV-1-T(M) SP-1-T(E)		2(E)	SEE NOTE 5
(C)	19-3-70(E)	30'	30'(E)	12'(E)	250W(E)				MAS(E) SV-1-T(M)		2(E)	SEE NOTES 4 & 5
(D)	1A(N)	10'							TV-1-T(N) SP-1-T(R)		4(E)	SEE NOTE 4
(E)	24A-4-70(E)	35'	35'(E)	15'(E)	400W(E)				MAS(E) MAS(E) SV-2-TA(E)		4(E)	
(F)	PPB(E)	3'-10"									2(E)	RS
(G)	17-2-80(N)	30'	20'(N)	12'(N)	250W(R)				MAS(N) SV-1-T(N)		2(N)	
(H)	1A(N)	10'							TV-2-T(N) SP-1-T(N)		2(N)	

(E)=EXISTING (M)=MODIFY (N)=NEW (R)=RELOCATE

- NOTES:
- NEW VEHICULAR HEADS SHALL HAVE 12" LENSES.
  - PEDESTRIAN PUSH BUTTONS SHALL BE INSTALLED ON THE POLE IN THE QUADRANT NEAREST THE CROSSWALK SERVING THE PHASE.
  - EQUIPMENT NOT TO BE REUSED SHALL BE SALVAGE.
  - REMOVE AND SALVAGE VEHICLE HEAD.
  - MODIFY TV-2-T AND SV-2-T MOUNTINGS TO TV-1-T AND SV-1-T MOUNTING RESPECTIVELY.

EXISTING



- NOTES:
- FLASHING OPERATION: ALL RED.

EXISTING DETECTOR SCHEDULE

LOOP DESIGNATION	NUMBER OF LOOPS	FEATURES
1-E-2	3	
2-E-2	3	
1-W-2	3	
2-W-2	3	
3-W-2	3	
1-N-4	3	
2-N-4	2	6' X 10' LOOPS
1-S-4	4	
1-S-3	3	TO BE ABANDON
2-S-3	3	TO BE ABANDON

EXISTING CONDUCTOR SCHEDULE

CONTROL FUNCTION	CONDUCTORS		CONDUIT RUNS					
	SIZE	INSULATION	▲	▲	▲	▲	▲	▲
VEHICLE HEADS	#14	T.W.	-	-	-	-	-	-
PHASE 2			3	3	3	3	3	6
PHASE 4			3	3	3	3	3	6
PHASE 3			-	-	-	-	-	3
PEDESTRIAN HEADS			-	-	-	-	-	-
PHASE 2			2	2	2	2	2	6
PHASE 4			2	2	2	2	2	4
PEDESTRIAN PUSH BUTTON			-	-	-	-	-	-
PHASE 2			-	1	2	2	1	4
PHASE 4			1	1	1	1	1	2
SPARES			3	3	3	3	3	6
12V COMMON	#12	T.W.	1	1	1	1	1	3
SPARES			-	-	-	-	-	-
DETECTORS	#12/2	P.E.	-	-	-	-	-	-
PHASE 2			-	-	-	3	2	5
PHASE 4			-	1	1	1	-	3
PHASE 3			-	-	-	2	-	2
I.I.S.N.S.	#12	T.W.	-	-	-	-	-	-
120V COMMON	#10	T.W.	1	1	1	1	1	3
LUMINAIRES	#8	T.H.W.	2	2	2	2	2	4
LIGHTING SERVICE	#8	T.H.W.	-	-	-	-	2	2
SIGNAL SERVICE	#8	T.H.W.	-	-	-	-	-	-
INTERCONNECT	#19	P.E.	-	-	-	-	-	-
TOTALS	#14	T.W.	12	18	19	19	18	43
	#12	T.W.	1	1	1	1	1	3
	#10	T.W.	3	3	3	3	3	7
	#8	T.H.W.	-	-	-	-	2	2
	#12/2	P.E.	-	1	1	6	2	10
INTERCONNECT	#19	P.E.	-	-	-	-	-	-
#14 EQUIV.			-	-	-	-	-	-
CONDUIT SIZE			2"	2"	2"	3"	2.5"	2-3"
CONDUIT	(E)=EXISTING (N)=NEW (E) (E) (E) (E) (E) (E)							

NOTE: USE EXISTING PHASE 3 CONDUCTORS FOR PHASE 2 AT LOCATION (D): LABEL IN PULLBOXES AND CABINET.

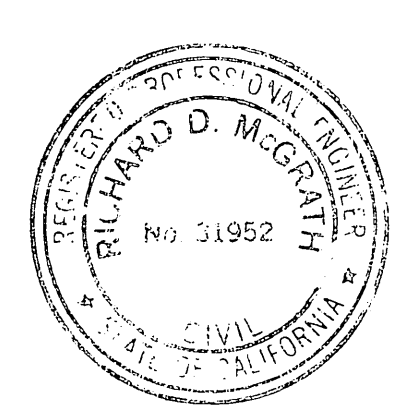
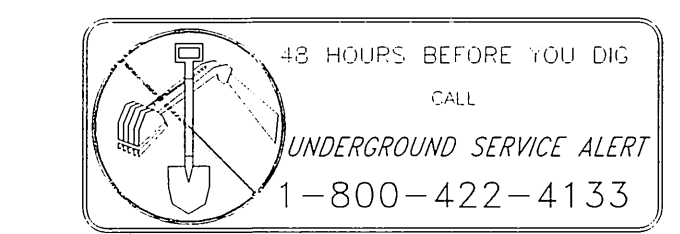
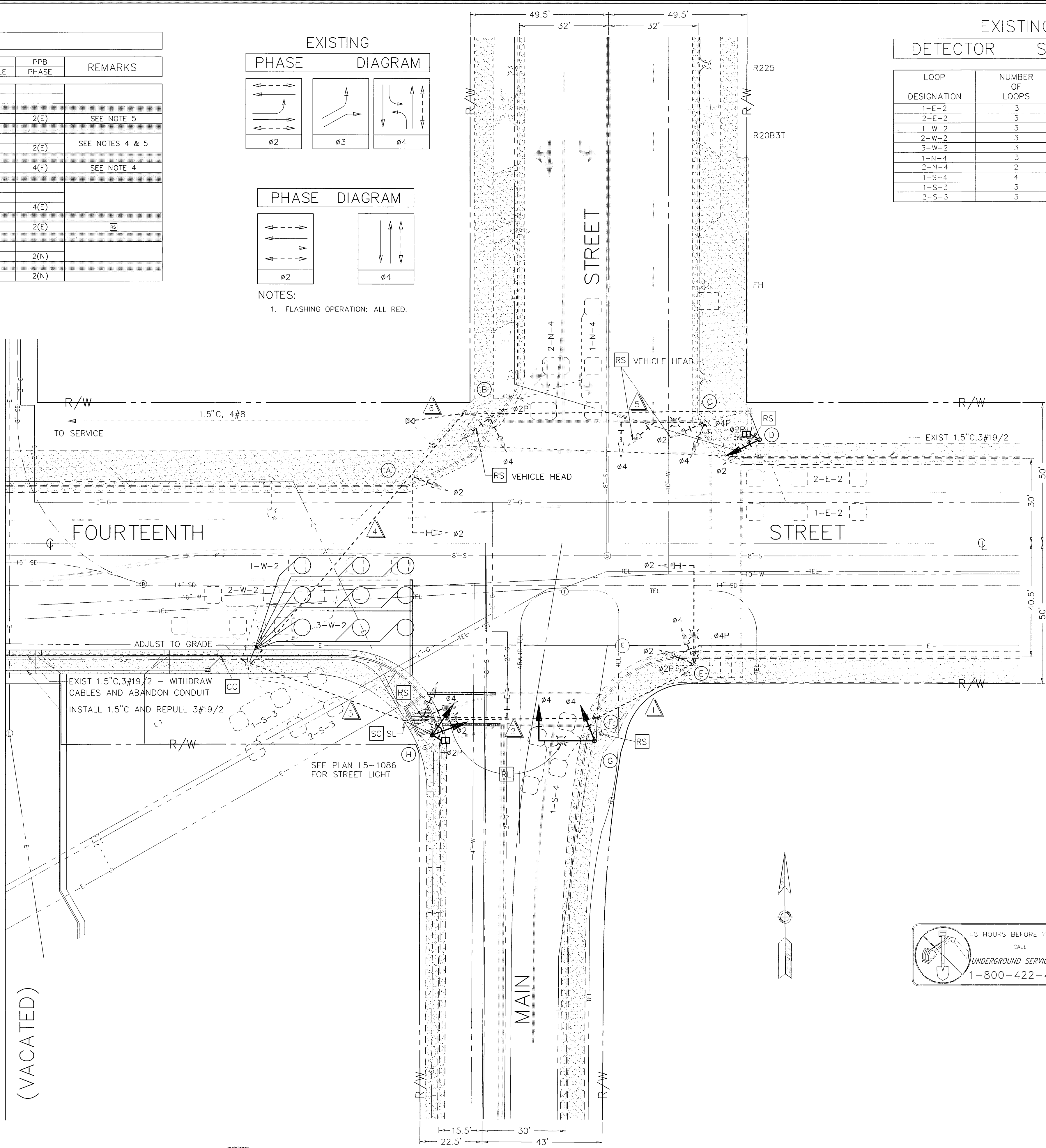
GENERAL NOTES

- DETECTOR LOOPS SHALL BE INSTALLED IN THE PRESENCE OF THE TRAFFIC ENGINEER OR HIS REPRESENTATIVE.
- ALL STRIPING AND PAVEMENT MARKING REQUIREMENTS SHALL BE COMPLETED AT LEAST ONE DAY PRIOR TO TURN-ON.
- TYPICAL DETECTOR LOOP SPACING: 10' AND 15'.
- PAVEMENT DELINEATION SHOWN HEREON IS FOR REFERENCE ONLY. CITY FORCES SHALL PERFORM ALL PERMANENT PAINTING (INSTALLATION AND REMOVALS) WORK.

PAVEMENT DELINEATION

- FOR REFERENCE ONLY
- INDICATES STRIPING AND PAVEMENT MARKINGS TO BE INSTALLED.
  - INDICATES STRIPING AND PAVEMENT MARKINGS TO REMAIN.
  - INDICATES STRIPING AND PAVEMENT MARKINGS TO BE REMOVED.

MATCH LINE FOR X-107



ENGINEER IN RESPONSIBLE CHARGE  
 RICHARD D. McGRATH  
 R.C.E. NO. 31952 EXPIRES 12-31-96  
 DATE 10-2-95

MARK	REVISIONS	APPROV.	DATE

DESIGNED BY: [Signature] DRAWN BY: B.C.M. CHECKED BY: [Signature]

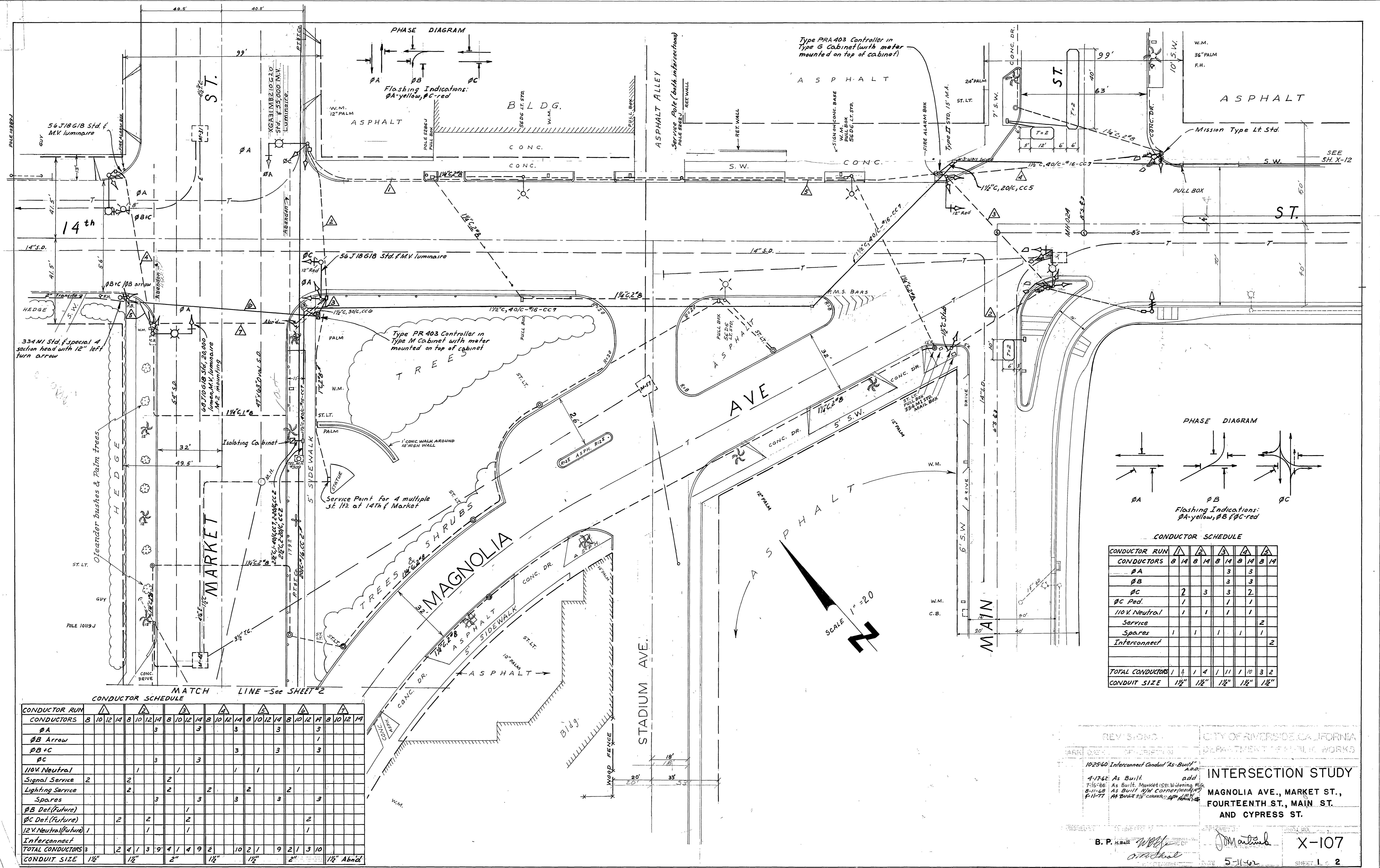
CITY OF RIVERSIDE, CALIFORNIA  
 DEPARTMENT OF PUBLIC WORKS

APPROVED BY: [Signature] DATE: 10/2/95  
 PRINCIPAL ENGINEER  
 P.W. INSPECTOR: [Signature]  
 TRAFFIC DIVISION  
 CHIEF P.W. ENGR.  
 PUBLIC UTILITIES

TRAFFIC SIGNAL REVISION  
 FOURTEENTH STREET AND MAIN STREET  
 SCALE: 1" = 20'

ACCT. NO. 0430-541600-440222-30239  
 X-107A  
 SHEET 1 OF 1  
 FILE NAME: X-107A.DWG

INDEXED 11-9-95 GPH  
 FILE W/ #3326

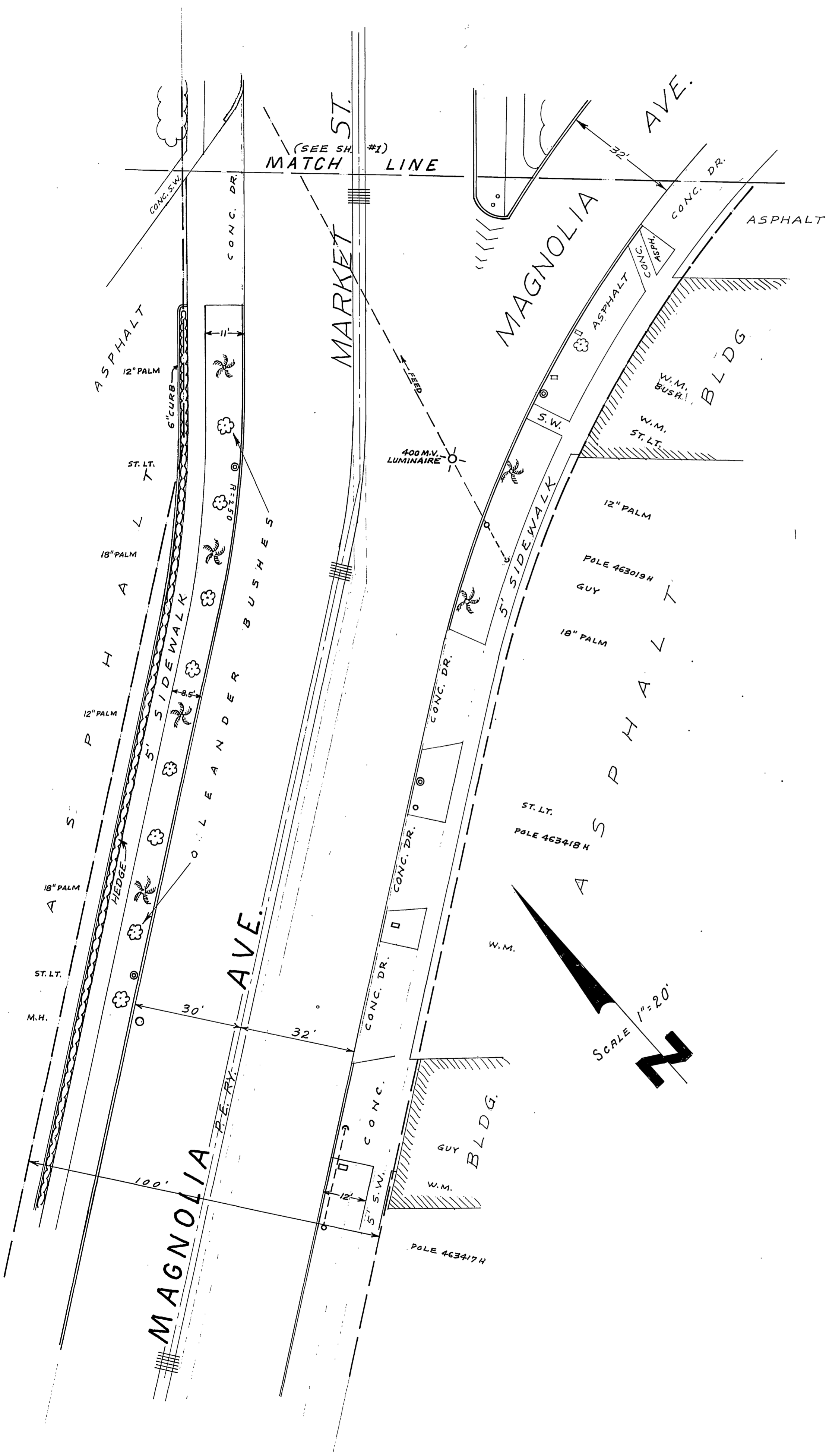


REV. 3-DWG  
CITY OF RIVERSIDE, CALIFORNIA  
DEPARTMENT OF PUBLIC WORKS

1025-60 Interconnect Conduit "As-Built"  
add  
4-7-62 As Built  
7-15-66 As Built Market St. Widening Pkg.  
8-11-68 AS BUILT 1/4" COMPROMISE  
4-11-77 AS BUILT 1/2" CORNER 1/4" MINIMUM

**INTERSECTION STUDY**  
MAGNOLIA AVE., MARKET ST.,  
FOURTEENTH ST., MAIN ST.  
AND CYPRESS ST.

B. P. H. Ball  
J. Martinez  
X-107  
5-11-62  
SHEET 1 OF 2



REVISIONS		CITY OF RIVERSIDE CALIFORNIA DEPARTMENT OF PUBLIC WORKS
DATE	DESCRIPTION	
		<b>INTERSECTION STUDY</b> <b>MAGNOLIA AVE., MARKET ST.,</b> <b>FOURTEENTH ST., MAIN ST.</b> <b>AND CYPRESS ST.</b>
CHECKED BY <b>B. P. H. Ball</b>		APPROVED BY _____ DIRECTOR OF PUBLIC WORKS
DATE _____		DATE _____

X-107

POLE							SCHEDULE				REMARKS
STANDARD							SIGNAL MOUNTING		PPB	PHASE	
No.	TYPE	HEIGHT	SIG.MA.	LUM.MA.	LUMINAIRE	VEHICLE	PED.	PHASE			
(A)	II (E)	20'	20'	-	-	-	MASE	SV-2-T (E)	-	-	EXIST. POLE & EQUIPMENT
(B)	I-A	10'	-	-	-	-	-	TV-2-TA	SP-1-T	2	
(C)	I9-3-70	30'	30'	12'	250WHPSV	-	MAS	SV-2-T	SP-1-T	2	
(D)	I-A	10'	-	-	-	-	-	TV-1	SP-1-T	4	
(E)	24A-470	35'	35'	15'	400WHPSV	-	MAS	SV-2-TA	SP-2-T	4	
(F)	PPB	3'-10"	-	-	-	-	-	-	-	2	
(G)	I9-3-70	30'	30'	15'	250 WHPSV	-	MAS	SV-2-TA	SP-1-T	2	

**CAUTION**  
STREET SERIES CIRCUIT; CONTACT PUBLIC UTILITIES PH. 787-7511 FOR CLEARANCE PRIOR TO CONSTRUCTION.

INSTALL FULL ACTUATED 3-PHASE CONTROLLER WITH -LOOP DETECTOR SENSORS AND INTERCONNECT INTERFACE IN A TYPE "P" CABINET. RUN EXIST. INTERCONNECT CABLE INTO CONTROLLER.

REMOVE MISSION TYPE LIGHTING SIGNAL POLE. REMOVE FOUNDATION SUFFICIENTLY TO INSTALL A # 5 FULL BOX. SPLICE EXISTING S.L. CIRCUIT IN P.B. PROTECT S.L. CONDUIT IN PLACE (MISSION S.L. POLE TO BE RELOCATED AS SHOWN)

INTERCONNECT 1 1/2" 40/C-#16-CC7 REMOVE #16 CABLE INSTALL 2-PAIR #19 CABLE

REMOVE TYPE I POLE & FOUNDATION. NOTE 3  
REPLACE PB

REMOVE RAISED ISLAND AND TYPE 58J SIGNAL POLE. ABANDON CONDUIT. REMOVE PB. CONSTRUCT APPROX. 1400 S.F. 8" FULL DEPTH A.C. OR 4" A.C. OVER 10" A.B.

REMOVE CONCRETE TYPE I POLE SEE NOTE 3

REMOVE S.L. INSTALL PB & SPLICE CIRCUIT

SERVICE POLE No. 52621  
14th & MAIN AND  
14th & MARKET

**NOTES**

1. ABANDON EXISTING CONDUIT EXCEPT WHERE NOTED OTHERWISE. REMOVE AND DO NOT REUSE CONDUCTORS FROM ABANDONED CONDUIT.
2. REMOVE ALL SIGNAL POLES AND HARDWARE AS NOTED.
3. REMOVE FOUNDATION SUFFICIENTLY TO REPLACE SURFACE MATERIAL AT GRADE.
4. SEE PLAN No. X-107 FOR ADDITIONAL INFORMATION.
5. STREET PAINTING AND REMOVAL BY OTHERS.

INTERCONNECT 1 1/2" C. 40/C-#16-CC7 REMOVE #16 CABLE INSTALL 2-PAIR #19 CABLE

MAGNOLIA AVENUE

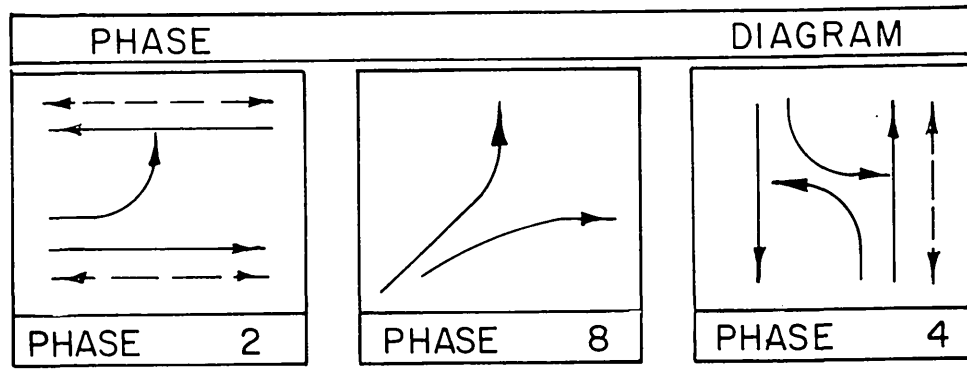
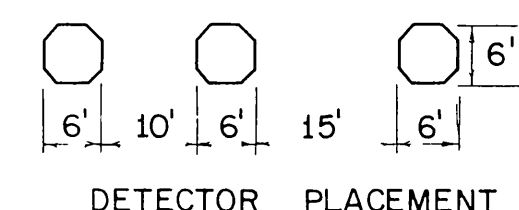
MAIN STREET

CONDUCTOR		TABLE						
AWG	CIRCUIT	RUNS						
		1	2	3	4	5	6	7
#14	Ø 2	3	3	3	3	3	6	
	Ø 4	3	3	3	3	3	6	
	Ø 8	-	3	3	3	3	9	
	Ø 2 PED	-	2	2	2	2	6	
	Ø 4 PED	2	2	2	2	2	4	
	Ø 2 PPB	-	1	2	2	1	4	
	Ø 4 PPB	1	1	1	1	1	2	
	SPARES	3	3	3	3	3	6	
	TOTAL	12	18	19	19	18	43	
	#12	PPB COMMON	1	1	1	1	1	3
	SPARES	-	1	1	1	1	2	
	TOTAL	1	2	2	2	2	5	
2 - #12 CABLE	Ø 2 DETECTOR	-	-	-	3	2	5	
	Ø 4 "	-	1	1	1	1	3	
	Ø 8 "	-	-	-	2	-	2	
	TOTAL CABLES	-	1	1	6	2	10	
#10	LUMINAIRE	-	2	2	2	2	4	
	SIGNAL COMMON	1	1	1	1	1	3	
	TOTAL	1	3	3	3	3	7	
#8	LIGHTING SERVICE	-	-	-	-	2	2	
	CONDUIT SIZE	2"	2"	2"	3"	2 1/2"	2-3"	

SENSOR		TABLE	
SENSOR	LOOP DETECTORS		
1	1-E-2	(3)	
2	2-E-2	(3)	
3	1-W-2	(3)	
4	2-W-2	(3)	
5	3-W-2	(3)	
6	1-N-4	(3)	
7	2-N-4 6'x10'	*(2)	
8	1-S-4	*(4)	
9	1-S-8	(3)	
10	2-S-8	(3)	

\* = SENSOR SHALL HAVE AN INTEGRAL ADJUSTABLE DELAY TIMER.

( ) = NUMBER OF LOOPS PER SENSOR.



**NPA** MOHLE, PERRY & ASSOC.  
DESIGN ENGR. R.C.E. 10692 DATE: 10/29/84

APPROVED BY	DATE	APPROVED BY	DATE
PRINCIPAL ENGINEER	10/29/84	DIRECTOR OF PUBLIC WORKS	10/29/84
TRAFFIC DIVISION	11/1/84		
CHIEF P. W. ENGR.	11/1/84		
PUBLIC UTILITIES	11/1/84		

CITY OF RIVERSIDE, CALIFORNIA  
DEPARTMENT OF PUBLIC WORKS

TRAFFIC SIGNAL PLAN  
MAGNOLIA AVENUE AT  
14 TH & MAIN STREET

PROJECT NO.  
SHEET 42 OF 50  
FILE NO.

AS BUILT 5-15-85

HORIZ. SCALE: 1" = 20' VERT. SCALE: 1" = 20'