

CONDUCTOR TABLE

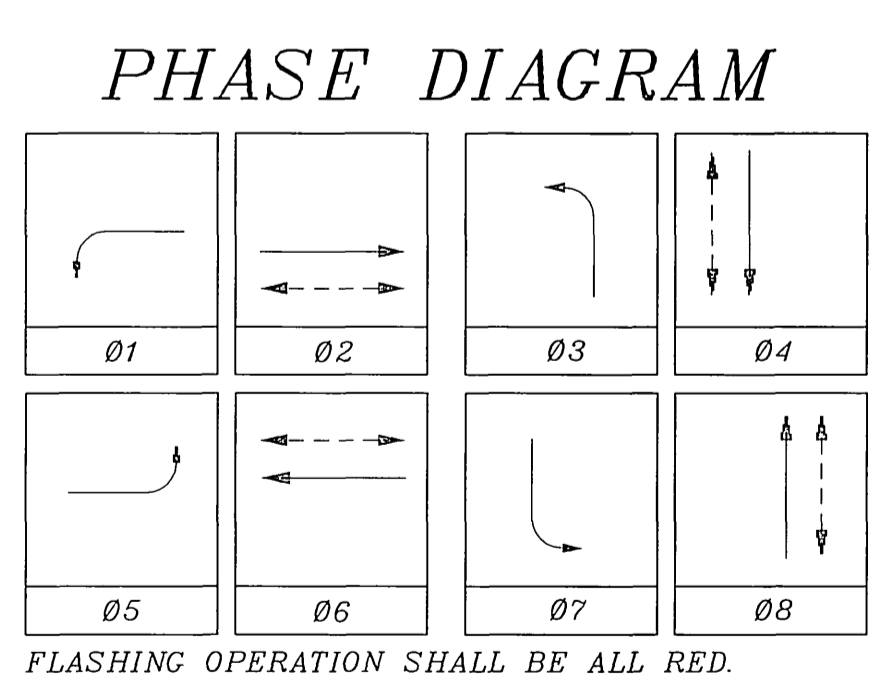
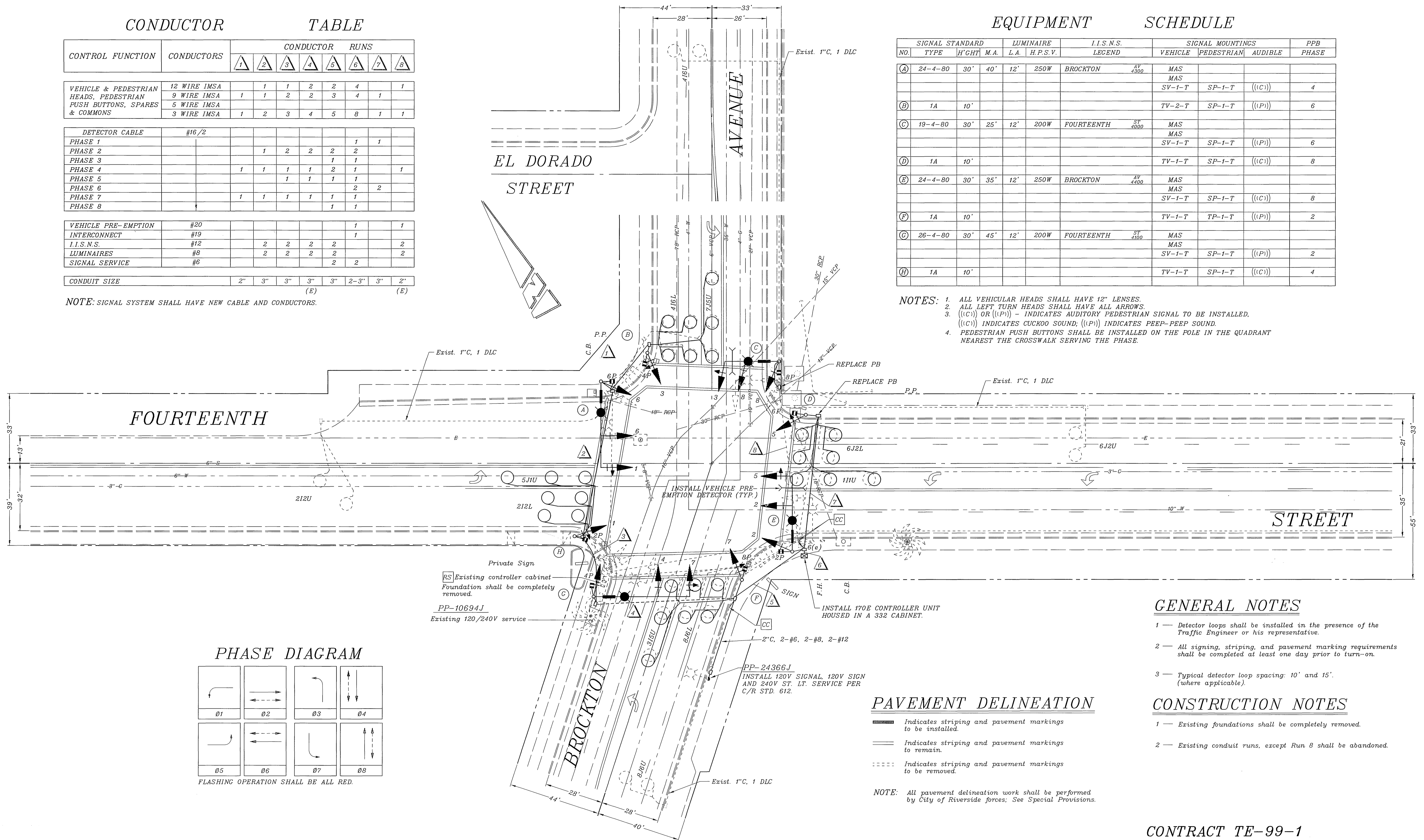
CONTROL FUNCTION	CONDUCTORS	CONDUCTOR RUNS							
		1	2	3	4	5	6	7	8
VEHICLE & PEDESTRIAN HEADS, PEDESTRIAN PUSH BUTTONS, SPARES & COMMONS	12 WIRE IMSA		1	1	2	2	4		1
	9 WIRE IMSA	1	1	2	2	3	4	1	
	5 WIRE IMSA								
	3 WIRE IMSA	1	2	3	4	5	8	1	1
DETECTOR CABLE	#16/2								
PHASE 1								1	1
PHASE 2			1	2	2	2	2		
PHASE 3							1	1	
PHASE 4		1	1	1	1	2	1		1
PHASE 5				1	1	1	1		
PHASE 6							2	2	
PHASE 7		1	1	1	1	1	1		
PHASE 8							1	1	
VEHICLE PRE-EMPTION	#20							1	1
INTERCONNECT	#19							1	
I.I.S.N.S.	#12		2	2	2	2			2
LUMINAIRES	#8		2	2	2	2			2
SIGNAL SERVICE	#6						2	2	
CONDUIT SIZE		2"	3"	3"	3"	3"	2-3"	3"	2"

NOTE: SIGNAL SYSTEM SHALL HAVE NEW CABLE AND CONDUCTORS.

EQUIPMENT SCHEDULE

NO.	SIGNAL STANDARD	TYPE	H'GHT	M.A.	L.A.	H.P.S.V.	I.I.S.N.S. LEGEND	SIGNAL MOUNTINGS			PPB PHASE	
								VEHICLE	PEDESTRIAN	AUDIBLE		
(A)	24-4-80	30'	40'	12'	250W	BROCKTON	AV 4300	MAS				
								MAS				
								SV-1-T	SP-1-T	((C))		4
(B)	1A	10'						TV-2-T	SP-1-T	((P))		6
(C)	19-4-80	30'	25'	12'	200W	FOURTEENTH	ST 4000	MAS				
								MAS				
								SV-1-T	SP-1-T	((P))		6
(D)	1A	10'						TV-1-T	SP-1-T	((C))		8
(E)	24-4-80	30'	35'	12'	250W	BROCKTON	AV 4400	MAS				
								MAS				
								SV-1-T	SP-1-T	((C))		8
(F)	1A	10'						TV-1-T	TP-1-T	((P))		2
(G)	26-4-80	30'	45'	12'	200W	FOURTEENTH	ST 4100	MAS				
								MAS				
								SV-1-T	SP-1-T	((P))		2
(H)	1A	10'						TV-1-T	SP-1-T	((C))		4

NOTES: 1. ALL VEHICULAR HEADS SHALL HAVE 12" LENSES.
 2. ALL LEFT TURN HEADS SHALL HAVE ALL ARROWS.
 3. ((C)) OR ((P)) - INDICATES AUDITORY PEDESTRIAN SIGNAL TO BE INSTALLED. ((C)) INDICATES CUCKOO SOUND; ((P)) INDICATES PEEP-PEEP SOUND.
 4. PEDESTRIAN PUSH BUTTONS SHALL BE INSTALLED ON THE POLE IN THE QUADRANT NEAREST THE CROSSWALK SERVING THE PHASE.



- GENERAL NOTES
- Detector loops shall be installed in the presence of the Traffic Engineer or his representative.
 - All signing, striping, and pavement marking requirements shall be completed at least one day prior to turn-on.
 - Typical detector loop spacing: 10' and 15' (where applicable).
- CONSTRUCTION NOTES
- Existing foundations shall be completely removed.
 - Existing conduit runs, except Run 8 shall be abandoned.

PAVEMENT DELINEATION

- Indicates striping and pavement markings to be installed.
- Indicates striping and pavement markings to remain.
- Indicates striping and pavement markings to be removed.

NOTE: All pavement delineation work shall be performed by City of Riverside forces; See Special Provisions.

CONTRACT TE-99-1

IMPORTANT NOTICE
 Section 4216/4217 of the Government Code requires a Day Alert Identification Number to be issued before a "Permit to Excavate" will be valid. For your Day Alert ID Number call CALL TOLL FREE TWO WORKING DAYS BEFORE YOU DIG UNDERGROUND SERVICE ALERT 1-800-227-2600

ENGINEER IN RESPONSIBLE CHARGE

 THOMAS JOHN BOYD
 R.C.E. No. 36170 expires
 DATE 12/2/99

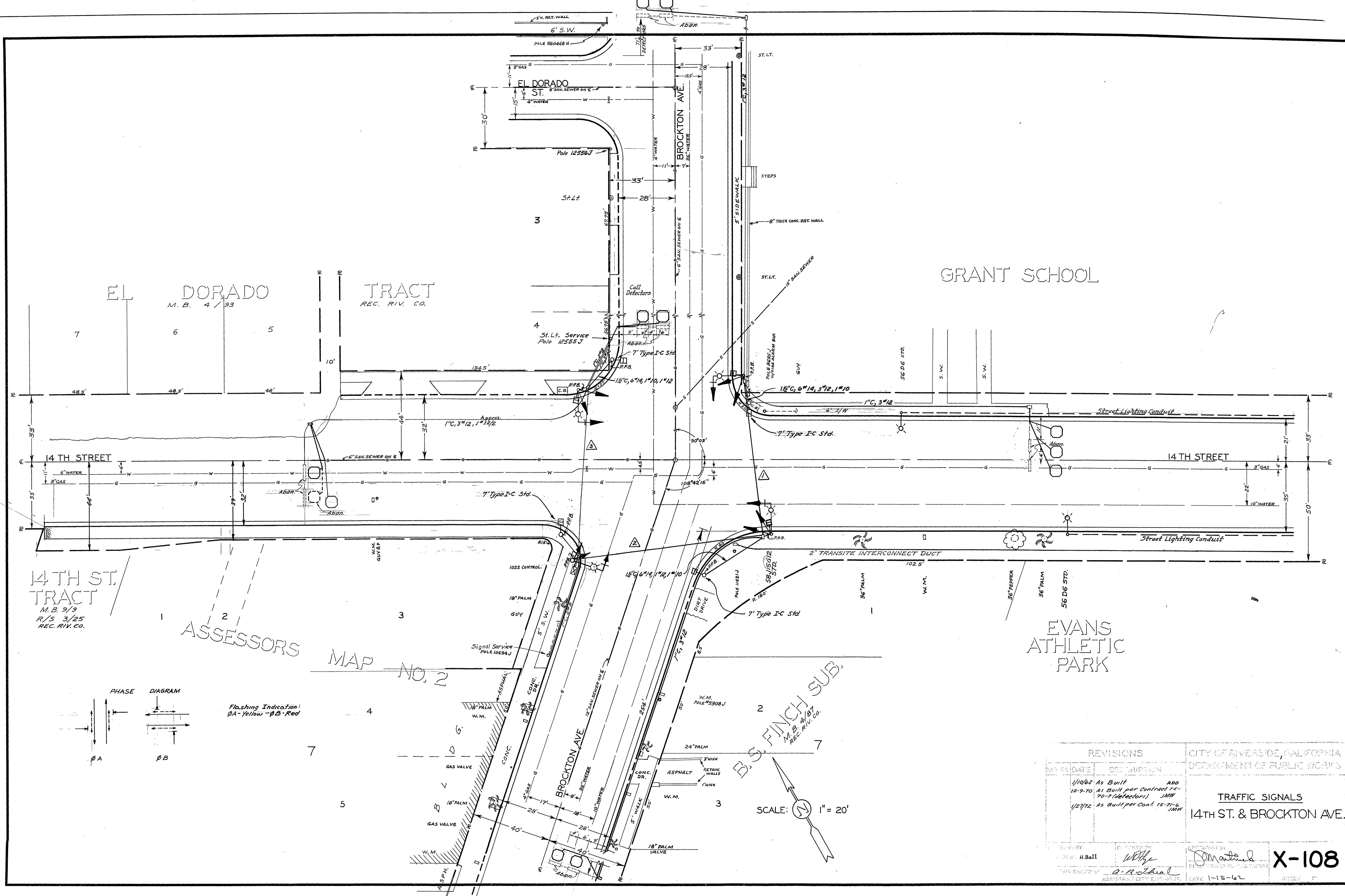
CITY OF RIVERSIDE, CALIFORNIA
 DEPARTMENT OF PUBLIC WORKS

APPROVED BY:
 R. Mc Neal
 DIRECTOR OF PUBLIC WORKS

DATE: 12-2-99

TRAFFIC SIGNAL MODIFICATION
 BROCKTON AVENUE @
 FOURTEENTH STREET

ACCT. NO. 0432-541600-440302-35078
 X-108A
 SHEET 1 OF 1
 FILE NAME: X108A.DWG

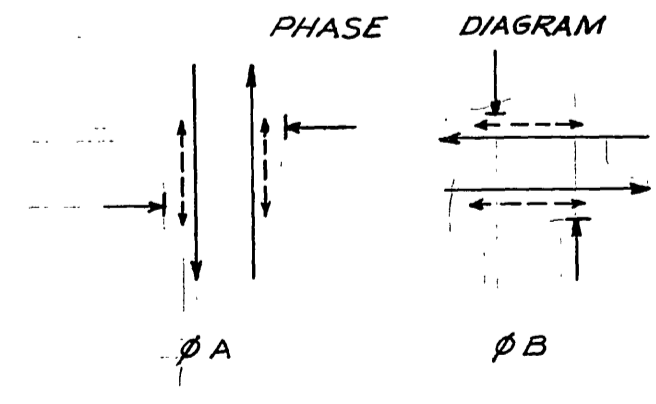


14 TH ST.
TRACT
M.B. 9/9
R/S 3/25
REC. RIV. CO.

ASSESSORS

MAP NO. 2

B.S. FINCH SUB.
M.B. 2/1974
REC. RIV. CO.



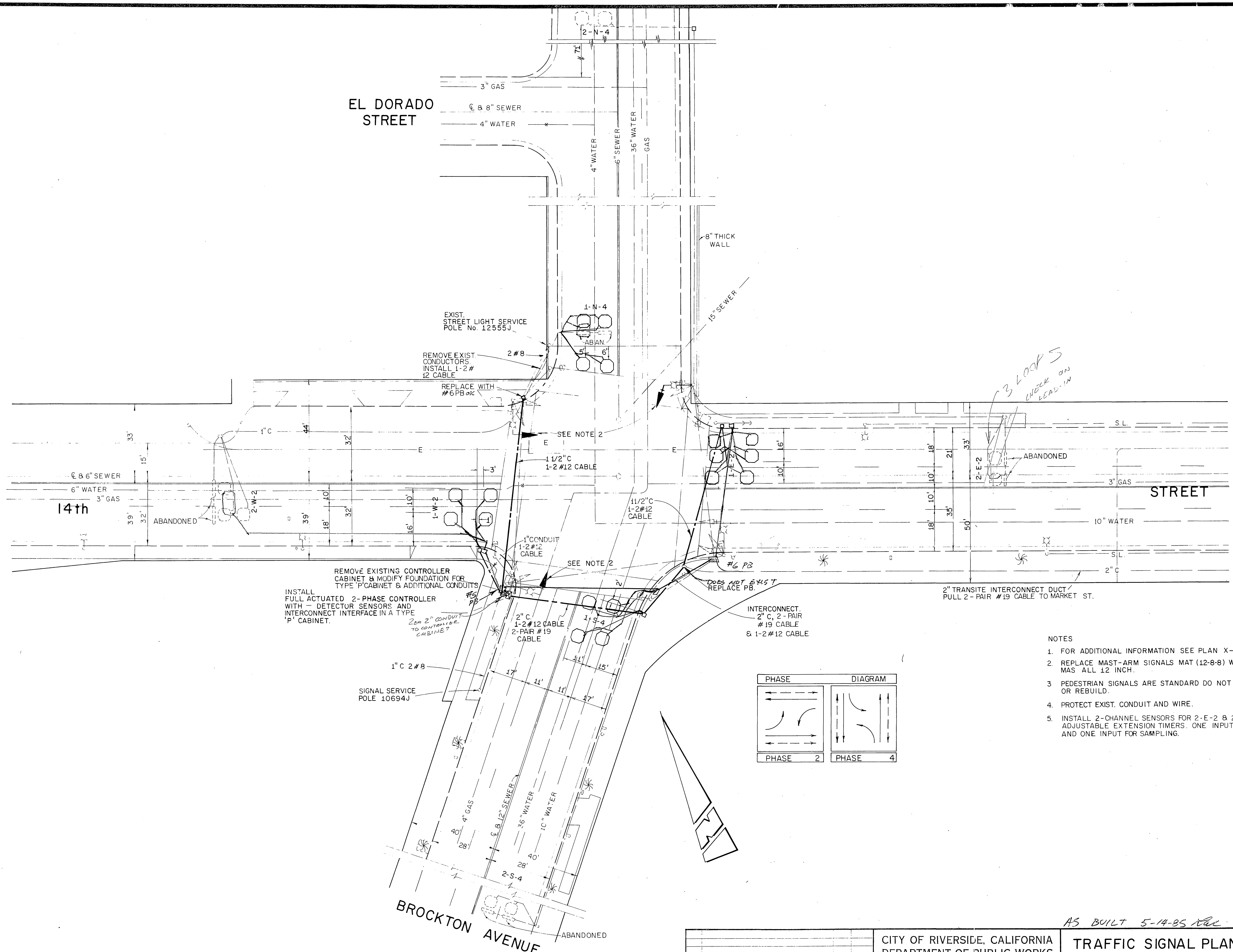
Flashing Indication:
ØA - Yellow - ØB - Red

SCALE: 1" = 20'

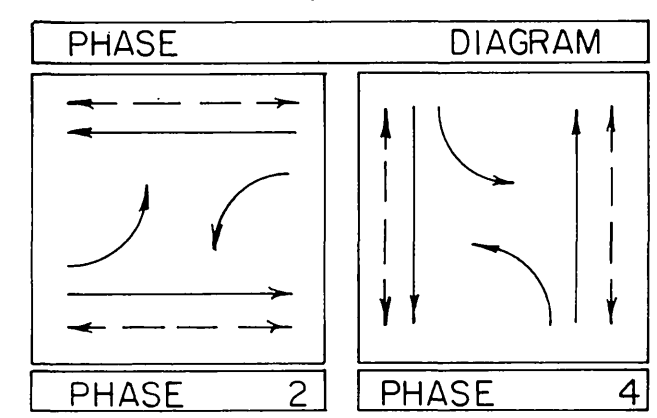
REVISIONS		CITY OF RIVERSIDE, CALIFORNIA DEPARTMENT OF PUBLIC WORKS
DATE	DESCRIPTION	
1/10/62	As Built	TRAFFIC SIGNALS 14TH ST. & BROCKTON AVE.
12-9-70	As Built per Contract 75-70-7 (defectors)	
1/27/72	As Built per Cont. 15-71-6	

DESIGNED BY H.Ba11	CHECKED BY WPH	APPROVED BY <i>Omata</i>
DRAWN BY A.A. Jhal		DATE 1-15-67


X-108



- NOTES
1. FOR ADDITIONAL INFORMATION SEE PLAN X-108.
 2. REPLACE MAST-ARM SIGNALS MAT (12-8-8) WITH MAS ALL 12 INCH.
 3. PEDESTRIAN SIGNALS ARE STANDARD DO NOT REPLACE OR REBUILD.
 4. PROTECT EXIST. CONDUIT AND WIRE.
 5. INSTALL 2-CHANNEL SENSORS FOR 2-E-2 & 2-W-2 WITH ADJUSTABLE EXTENSION TIMERS. ONE INPUT TO CONTROLLER AND ONE INPUT FOR SAMPLING.



AS BUILT 5-14-85


 PREPARED BY: *R. H. Moller* Oct. 9, 1980
 DESIGN ENGR. R.C.E. 10692 DATE

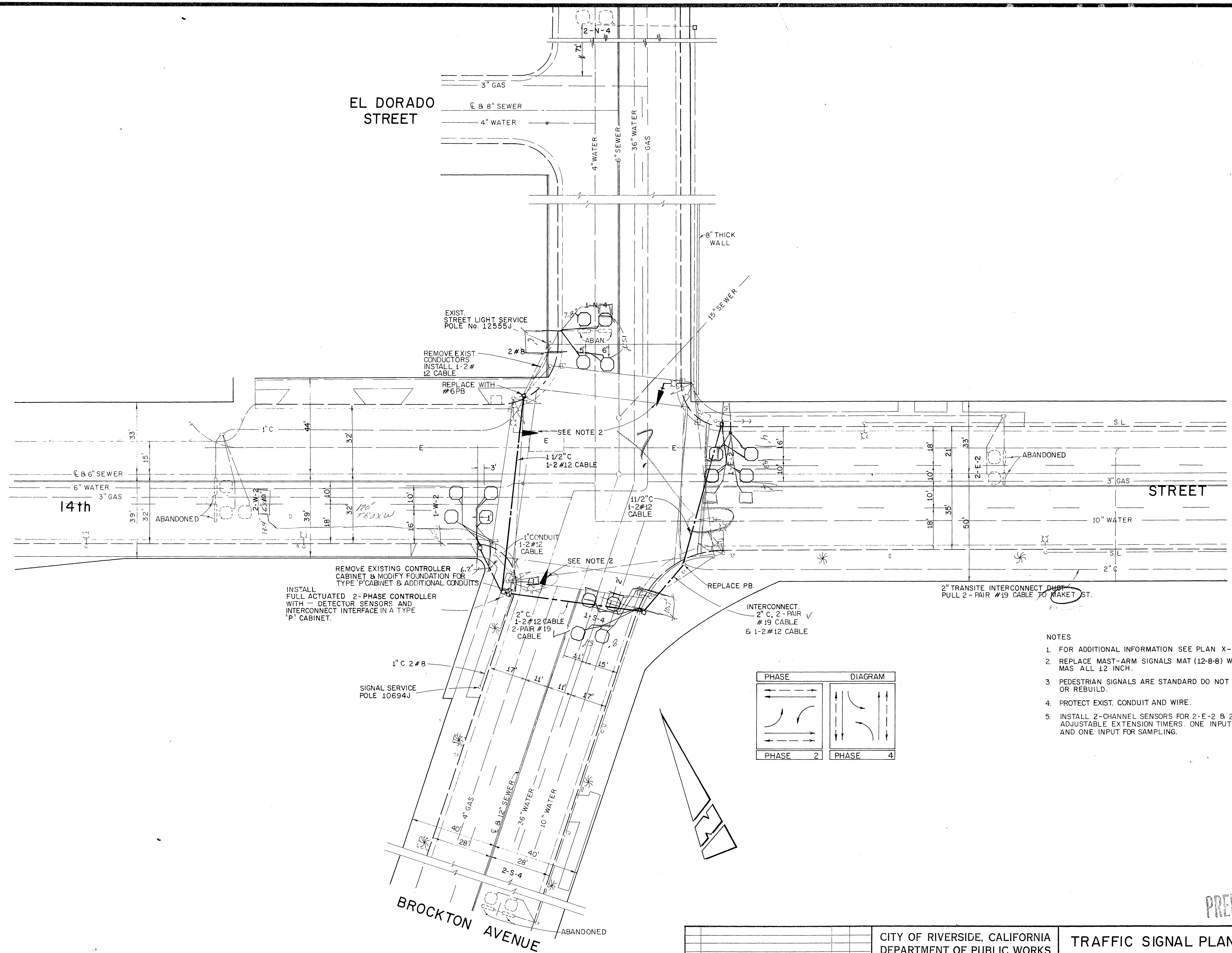
MARK	REVISIONS	APPR.	DATE

DESIGNED BY *J.J.S.* DRAWN BY *A.G.B.* CHECKED BY *R.L.M.*

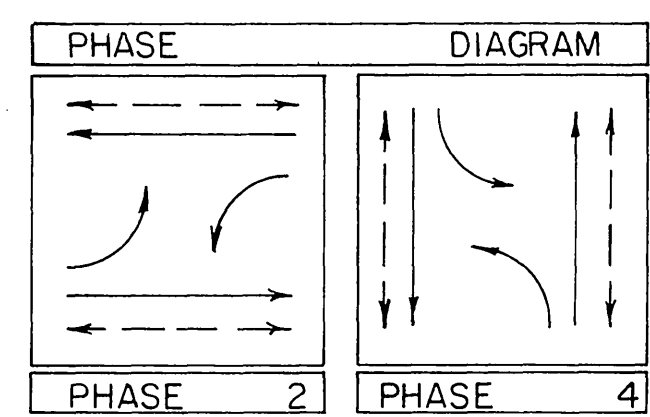
CITY OF RIVERSIDE, CALIFORNIA DEPARTMENT OF PUBLIC WORKS			
APPROVED BY	BY	DATE	APPROVED BY
PRINCIPAL ENGINEER	<i>[Signature]</i>	12/77	<i>[Signature]</i>
PARK DEPARTMENT			DIRECTOR OF PUBLIC WORKS
TRAFFIC DIVISION	3	12/12	
CHIEF P. W. ENGR.	<i>[Signature]</i>	12/12	DATE
PUBLIC UTILITIES			

TRAFFIC SIGNAL PLAN
14th STREET AT
BROCKTON AVENUE
 HORIZ. SCALE: 1" = 20' VERT. SCALE: 1" = 20'

PROJECT NO. _____
 SHEET 40 OF 50
 FILE NO. _____



- NOTES
1. FOR ADDITIONAL INFORMATION SEE PLAN X-108.
 2. REPLACE MAST-ARM SIGNALS MAT (12-8-8) WITH MAS ALL 12 INCH.
 3. PEDESTRIAN SIGNALS ARE STANDARD DO NOT REPLACE OR REBUILD.
 4. PROTECT EXIST. CONDUIT AND WIRE.
 5. INSTALL 2-CHANNEL SENSORS FOR 2-E-2 & 2-W-2 WITH ADJUSTABLE EXTENSION TIMERS. ONE INPUT TO CONTROLLER AND ONE INPUT FOR SAMPLING.



JUL 21 1982

PRELIMINARY

PREPARED BY: *R. H. Mohle Oct 9, 1980*
 MOHLE, PERRY & ASSOC. DESIGN ENGR. R.C.E. 10692 DATE

CITY OF RIVERSIDE, CALIFORNIA DEPARTMENT OF PUBLIC WORKS			
APPROVED BY	BY	DATE	APPROVED BY
PRINCIPAL ENGINEER	<i>[Signature]</i>	12/1/82	<i>[Signature]</i>
PARK DEPARTMENT			DIRECTOR OF PUBLIC WORKS
TRAFFIC DIVISION	5	12/1/82	
CHIEF P. W. ENGR.	<i>[Signature]</i>	12/1/82	DATE
PUBLIC UTILITIES			

PROJECT NO. X-108
 TRAFFIC SIGNAL PLAN
 14th STREET AT
 BROCKTON AVENUE
 SHEET 40 OF 50
 FILE NO.

HORIZ. SCALE: 1" = 20' VERT. SCALE: 1" = 20'