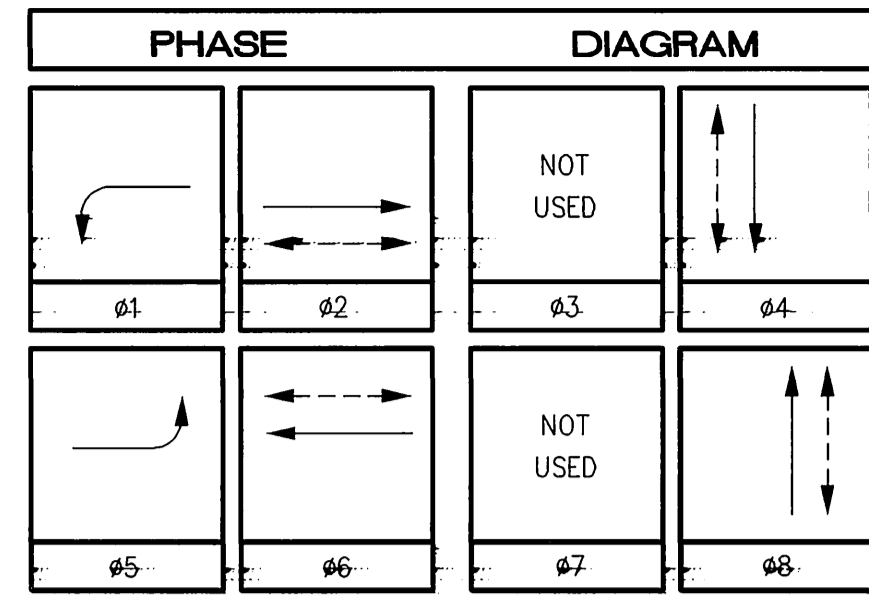
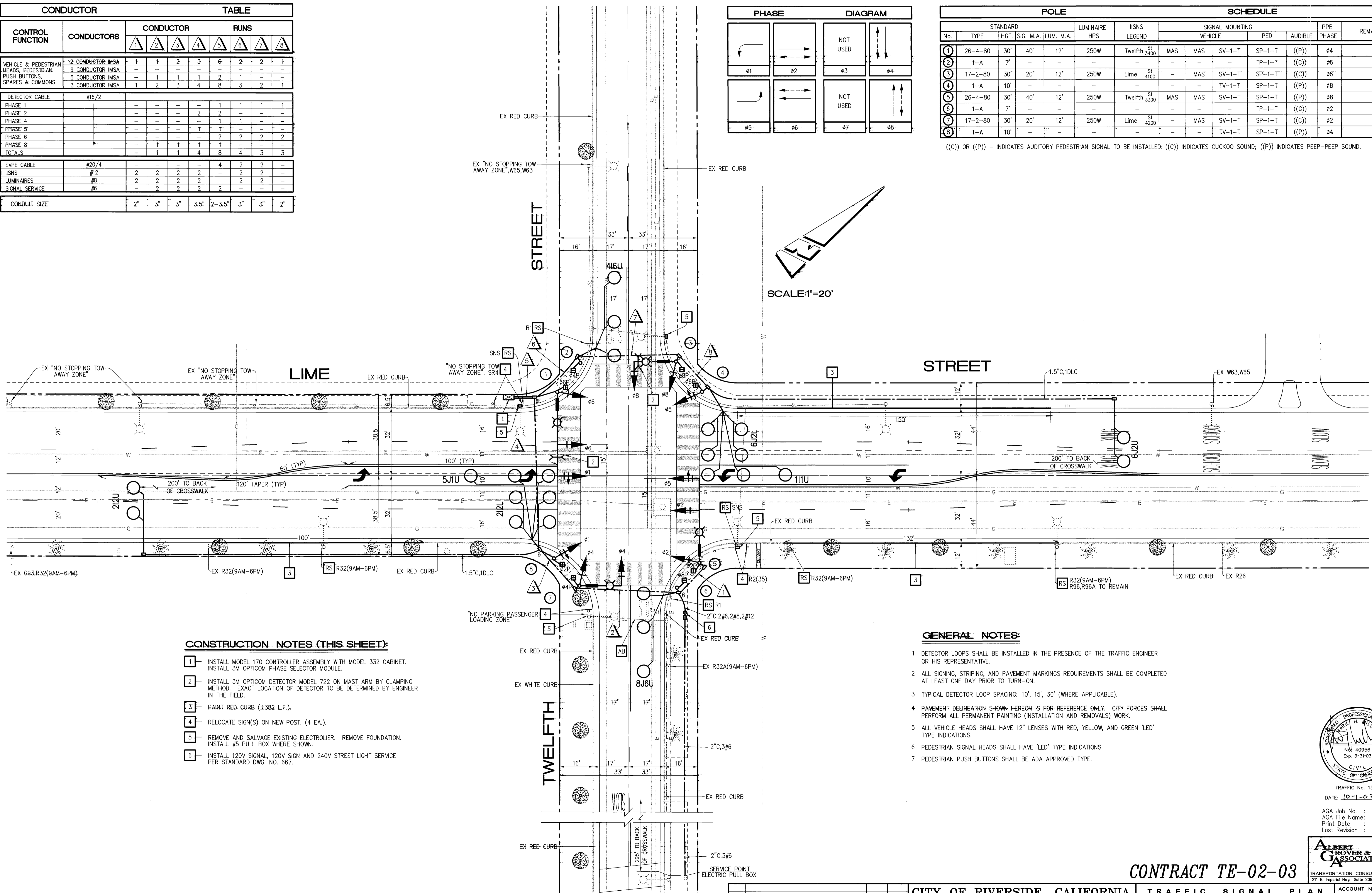


CONDUCTOR		TABLE							
CONTROL FUNCTION	CONDUCTORS	CONDUCTOR RUNS							
		1	2	3	4	5	6	7	8
VEHICLE & PEDESTRIAN HEADS, PEDESTRIAN PUSH BUTTONS, SPARES & COMMONS	12 CONDUCTOR IMSA	1	1	2	3	6	2	2	1
	9 CONDUCTOR IMSA	-	-	-	-	-	-	-	-
	5 CONDUCTOR IMSA	-	1	1	1	2	1	-	-
3 CONDUCTOR IMSA	1	2	3	4	8	3	2	1	
DETECTOR CABLE	#16/2	-	-	-	-	1	1	1	1
PHASE 1		-	-	-	-	2	2	-	-
PHASE 2		-	-	-	-	1	1	-	-
PHASE 4		-	-	-	-	1	1	-	-
PHASE 5		-	-	-	-	1	1	-	-
PHASE 6		-	-	-	-	2	2	-	-
PHASE 8		-	-	-	-	1	1	-	-
TOTALS		1	1	1	1	8	4	3	3
EVPE CABLE	#20/4	-	-	-	-	4	2	2	-
IISNS	#12	2	2	2	2	-	2	2	-
LUMINAIRES	#8	2	2	2	2	-	2	2	-
SIGNAL SERVICE	#6	-	2	2	2	-	-	-	-
CONDUIT SIZE		2"	3"	3"	3.5"	2-3.5"	3"	3"	2"



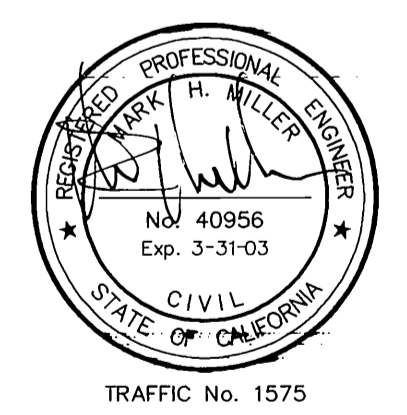
No.	STANDARD TYPE	HGT.	SIG. M.A.	LUM. M.A.	LUMINAIRE HPS	IISNS LEGEND	SCHEDULE				PPB PHASE	REMARKS	
							VEHICLE	PED	AUDIBLE	PHASE			
1	26-4-80	30'	40'	12'	250W	Twelfth St 3400	MAS	MAS	SV-1-T	SP-1-T	((P))	ø4	
2	1-A	7'	-	-	-	-	-	-	-	TP-1-T	((C))	ø6	
3	17-2-80	30'	20'	12'	250W	Lime St 4100	-	MAS	SV-1-T	SP-1-T	((C))	ø6	
4	1-A	10'	-	-	-	-	-	-	TV-1-T	SP-1-T	((P))	ø8	
5	26-4-80	30'	40'	12'	250W	Twelfth St 3300	MAS	MAS	SV-1-T	SP-1-T	((P))	ø8	
6	1-A	7'	-	-	-	-	-	-	-	TP-1-T	((C))	ø2	
7	17-2-80	30'	20'	12'	250W	Lime St 4200	-	MAS	SV-1-T	SP-1-T	((C))	ø2	
8	1-A	10'	-	-	-	-	-	-	TV-1-T	SP-1-T	((P))	ø4	

((C)) OR ((P)) - INDICATES AUDITORY PEDESTRIAN SIGNAL TO BE INSTALLED: ((C)) INDICATES CUCKOO SOUND; ((P)) INDICATES PEEP-PEEP SOUND.



- CONSTRUCTION NOTES (THIS SHEET):**
- INSTALL MODEL 170 CONTROLLER ASSEMBLY WITH MODEL 332 CABINET. INSTALL 3M OPTICOM PHASE SELECTOR MODULE.
 - INSTALL 3M OPTICOM DETECTOR MODEL 722 ON MAST ARM BY CLAMPING METHOD. EXACT LOCATION OF DETECTOR TO BE DETERMINED BY ENGINEER IN THE FIELD.
 - PAINT RED CURB (±382 L.F.).
 - RELOCATE SIGN(S) ON NEW POST. (4 EA.).
 - REMOVE AND SALVAGE EXISTING ELECTROLIER. REMOVE FOUNDATION. INSTALL #5 PULL BOX WHERE SHOWN.
 - INSTALL 120V SIGNAL, 120V SIGN AND 240V STREET LIGHT SERVICE PER STANDARD DWG. NO. 667.

- GENERAL NOTES:**
- DETECTOR LOOPS SHALL BE INSTALLED IN THE PRESENCE OF THE TRAFFIC ENGINEER OR HIS REPRESENTATIVE.
 - ALL SIGNING, STRIPING, AND PAVEMENT MARKINGS REQUIREMENTS SHALL BE COMPLETED AT LEAST ONE DAY PRIOR TO TURN-ON.
 - TYPICAL DETECTOR LOOP SPACING: 10', 15', 30' (WHERE APPLICABLE).
 - PAVEMENT DELINEATION SHOWN HEREON IS FOR REFERENCE ONLY. CITY FORCES SHALL PERFORM ALL PERMANENT PAINTING (INSTALLATION AND REMOVALS) WORK.
 - ALL VEHICLE HEADS SHALL HAVE 12" LENSES WITH RED, YELLOW, AND GREEN 'LED' TYPE INDICATIONS.
 - PEDESTRIAN SIGNAL HEADS SHALL HAVE 'LED' TYPE INDICATIONS.
 - PEDESTRIAN PUSH BUTTONS SHALL BE ADA APPROVED TYPE.



TRAFFIC No. 1575
 DATE: 10-1-02
 AGA Job No.: 134-005
 AGA File Name: LMTWESG
 Print Date: 10/1/02
 Last Revision: 10/1/02

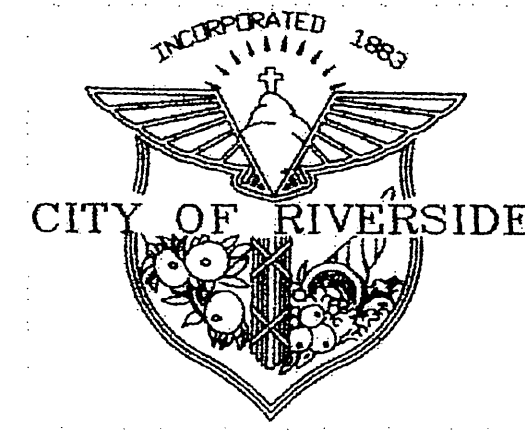
ALBERT GROVER & ASSOCIATES
 TRANSPORTATION CONSULTING ENGINEERS
 211 E. Imperial Hwy., Suite 208 Fullerton, CA 92835
 (714) 992-2990
 FAX 992-2984

CONTRACT TE-02-03

Underground Service Alert
 Call TOLL FREE
 1-800
 227-2600
 TWO WORKING DAYS BEFORE YOU DIG

CITY OF RIVERSIDE, CALIFORNIA DEPARTMENT OF PUBLIC WORKS				TRAFFIC SIGNAL PLAN				ACCOUNT NO.	
APPROVED BY: <i>[Signature]</i> DATE: 10/1/02				APPROVED BY: <i>[Signature]</i> DATE: 10/1/02				X-117	
INSPECTION: <i>[Signature]</i> DATE: 10/1/02				PUBLIC WORKS DIRECTOR				SHEET 2 OF 9	
DESIGNED BY: <i>[Signature]</i> DRAWN BY: <i>[Signature]</i> CHECKED BY: <i>[Signature]</i>				HORIZ. SCALE: 1" = 20' VERT. SCALE: 1" = -					

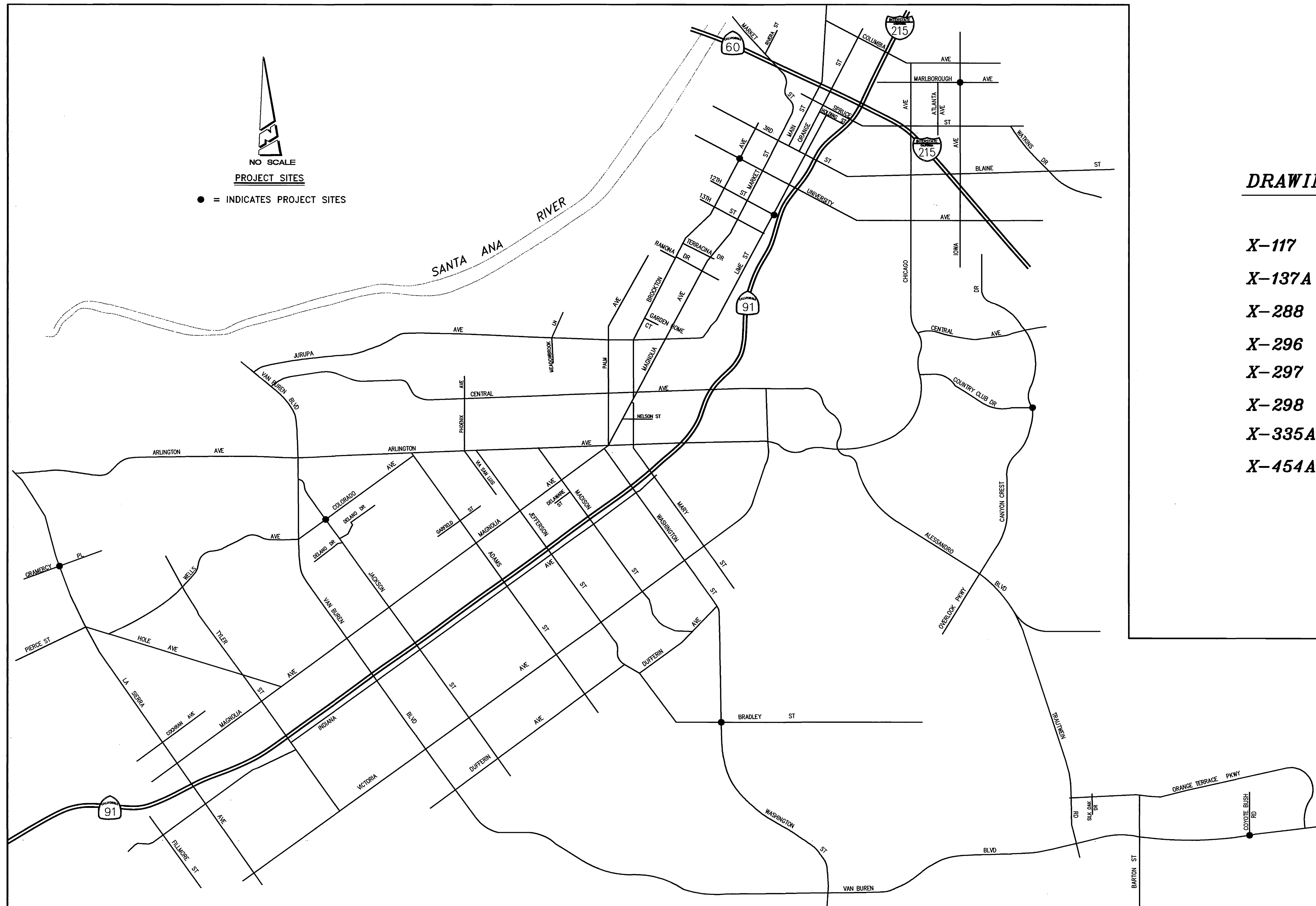
RIVERSIDE



CALIFORNIA

PUBLIC WORKS DEPARTMENT TRAFFIC ENGINEERING DIVISION

CONTRACT TE-02-03



NO SCALE
PROJECT SITES
● = INDICATES PROJECT SITES

INDEX OF SHEETS

DRAWING NO.	LOCATION	SHEET
	COVER SHEET	1
X-117	LIME ST AND TWELFTH ST	2
X-137A	UNIVERSITY AVE AND BROCKTON AVE	3
X-288	CANYON CREST DR AND COUNTRY CLUB DR	4
X-296	VAN BUREN BLVD AND COYOTE BUSH RD	5
X-297	IOWA AVE AND MARLBOROUGH AVE	6
X-298	WASHINGTON ST AND BRADLEY ST	7
X-335A	JACKSON ST AND COLORADO AVE	8
X-454A	LA SIERRA AVE AND GRAMERCY PL	9



TRAFFIC No. 1575
DATE: 10-1-02
AGA Job No. : 134-005
AGA File Name: RIV8-TS1
Print Date : 10/1/02
Last Revision : 10/1/02

ALBERT GROVER & ASSOCIATES
TRANSPORTATION CONSULTING ENGINEERS
211 E. Imperial Hwy., Suite 208 Fullerton, CA 92833
(714) 992-2900
FAX 992-2883

CITY OF RIVERSIDE, CALIFORNIA DEPARTMENT OF PUBLIC WORKS		TRAFFIC SIGNAL PLAN	ACCOUNT NO.
APPROVED BY	DATE	APPROVED BY	
PRINCIPAL ENGINEER		PUBLIC WORKS DIRECTOR	
INSPECTION		DATE	
TRAFFIC DIVISION	10/1/02		
CHIEF P. W. ENGINEER			
PUBLIC UTILITIES			
DESIGNED BY	DRAWN BY	CHECKED BY	
		TITLE SHEET	
		HORIZ. SCALE: 1" = - VERT. SCALE: 1" = -	
		SHEET 1 OF 9	