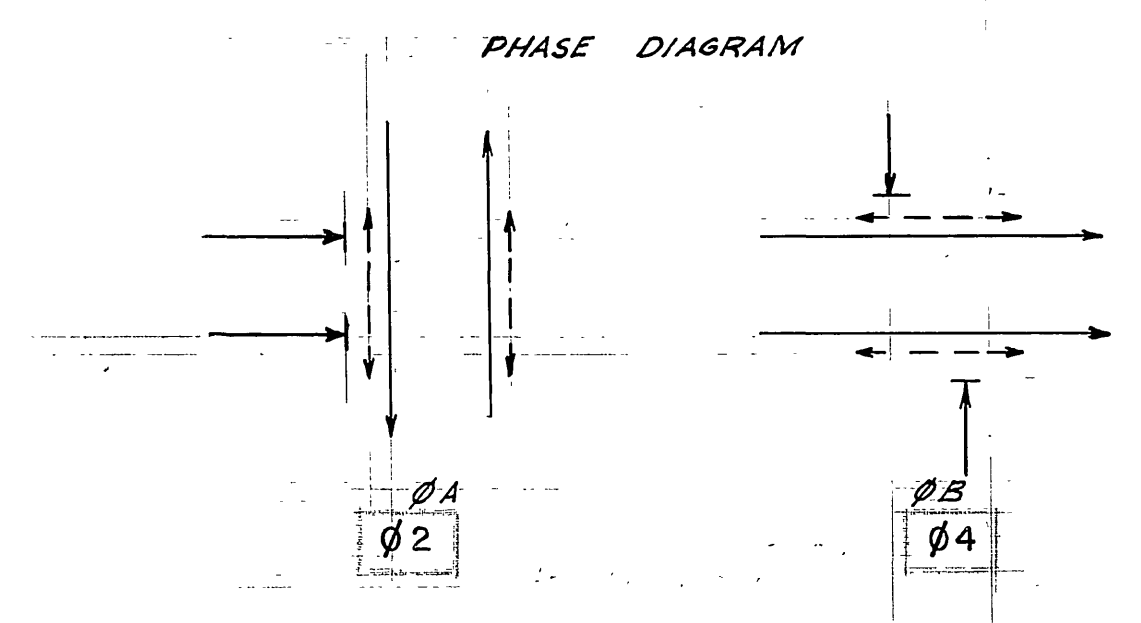


X-124

X-125

SCALE 1" = 20'

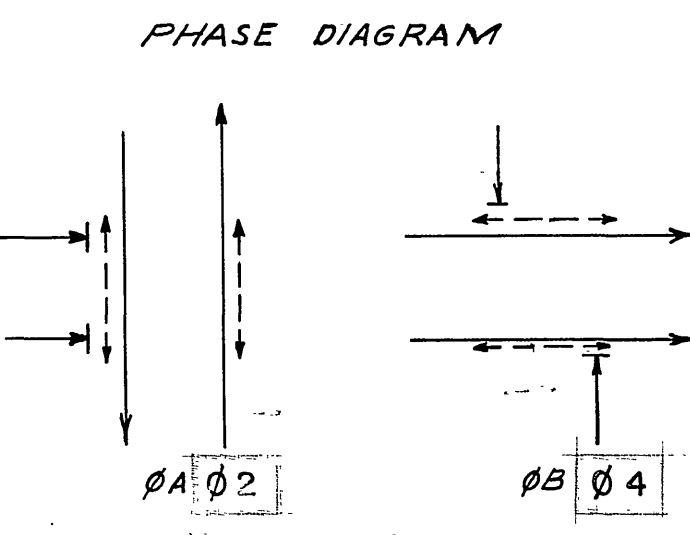
NOTES:  
 Conductors are installed for future "Walk-Don't Walk" signals at 8th St.  
 Luminaires are 20,000 lumen, 400 W., 120 V., Multiple, Type III mercury vapor with E.H.-1 Lamps. (Unless otherwise indicated) G.E. Type M-400



- NOTES - MODIFICATIONS
1. REPLACE CONTROLLERS AND CABINETS.
  2. INSTALL NEW POLE, SIGNAL HEAD & CONDUIT AT 7th STREET.
  3. INSTALL PED SIGNALS AND REMOVE 2-SEC. HEADS AT UNIVERSITY.

EXIST. CONDUCTOR SCHEDULE - 7th & Lemon

| CONDUCTOR RUN    | A |        | B  |        | C |        | D  |        | E |        | F  |        |
|------------------|---|--------|----|--------|---|--------|----|--------|---|--------|----|--------|
|                  | 8 | 10     | 12 | 14     | 8 | 10     | 12 | 14     | 8 | 10     | 12 | 14     |
| Ø A              |   |        |    | 3      |   |        | 3  |        |   | 3      |    |        |
| Ø B              |   |        |    |        | 3 |        |    | 3      |   |        | 3  |        |
| Ø A "W-DW"       |   |        |    |        | 2 |        |    | 2      |   |        | 2  |        |
| Ø B "W-DW"       |   |        |    | 2      |   |        |    | 2      |   |        | 2  |        |
| 110 V. Neutral   |   | 1      |    | 1      |   | 1      |    | 1      |   | 1      |    | 1      |
| Spares           |   |        | 3  |        | 3 |        |    | 3      |   | 3      |    | 3      |
| TOTAL CONDUCTORS | 1 | 8      | 1  | 13     | 1 | 13     | 1  | 13     | 1 | 10     | 1  | 6      |
| CONDUIT SIZE     |   | 1 1/2" |    | 1 1/2" |   | 1 1/2" |    | 1 1/2" |   | 1 1/2" |    | 1 1/2" |



REVISIONS

| DATE           | DESCRIPTION                   |
|----------------|-------------------------------|
| A.D.D. 6/18/59 | Stds. & Luminaires            |
| A.D.D. 1-18-60 | As-Built                      |
| 1-9-61         | As-Built - 7th & Lemon app    |
| 1/4/63         | As-Built - 8th & Lemon app    |
| 10/1/63        | As-Built - 2 Way Conv. J. Hwy |

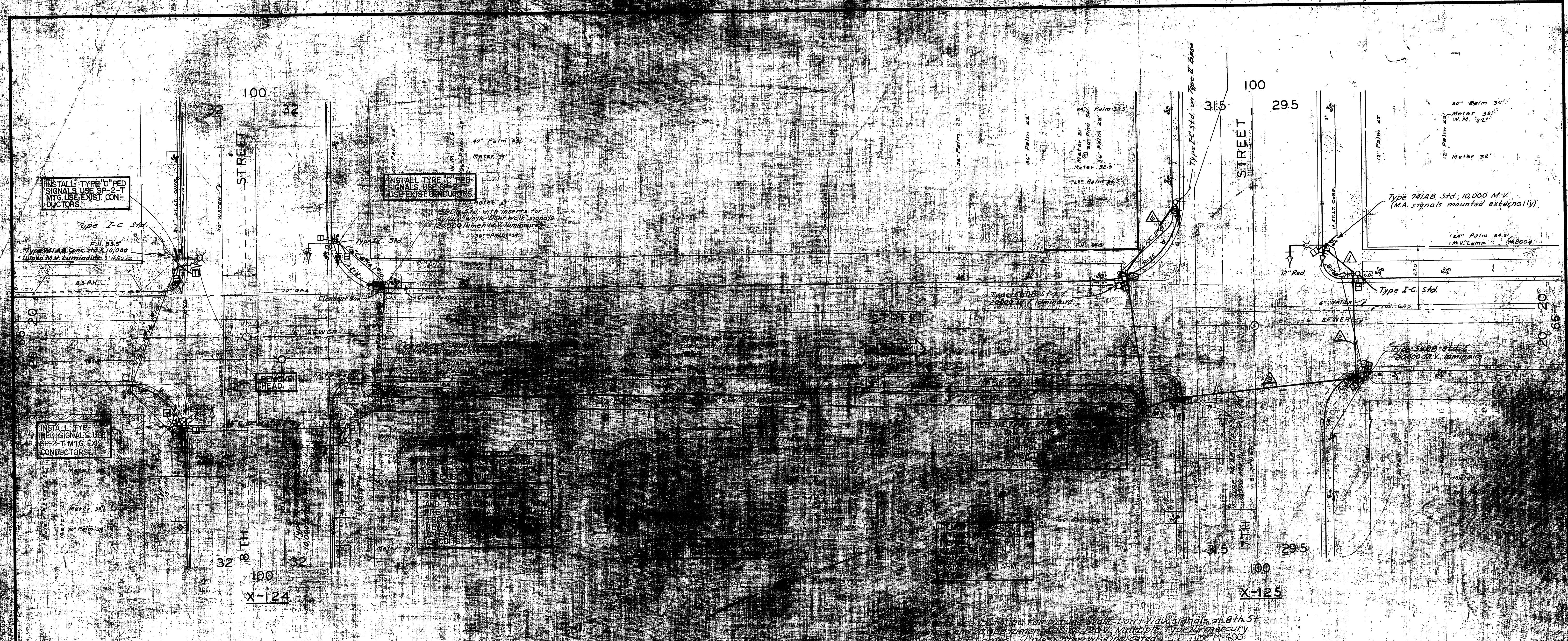
CITY OF RIVERSIDE, CALIF. DEPARTMENT OF PUBLIC WORKS

TRAFFIC SIGNALS  
 LEMON STREET  
 7TH TO 8TH

CERTIFIED A.D.D. [Signature]  
 DRAWN BY B.L. [Signature]  
 CHECKED BY [Signature]  
 DATE 1-18-62

X-124  
 X-125  
 28 50

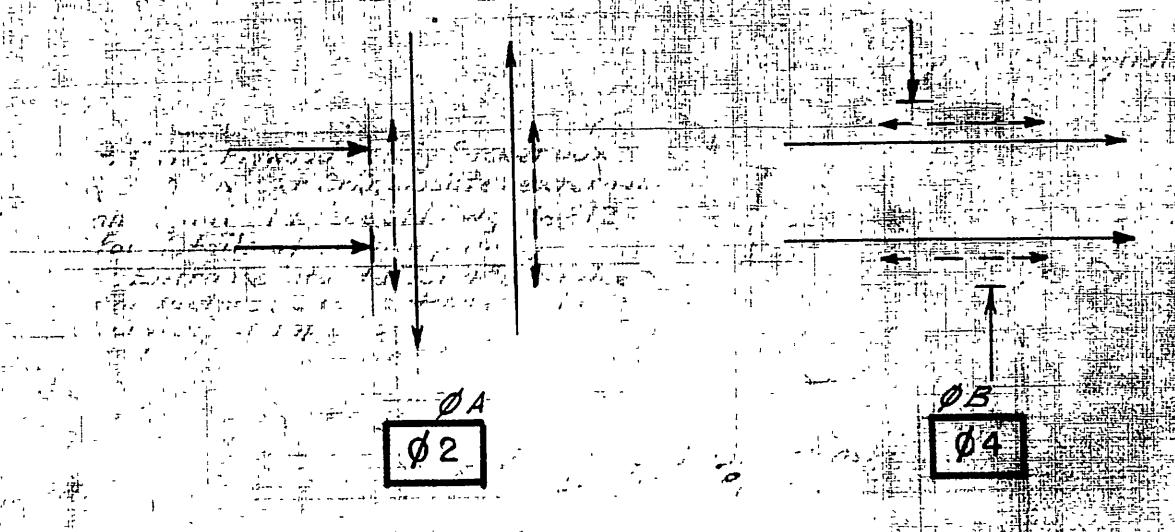




X-124

X-125

PHASE DIAGRAM



- NOTES - MODIFICATIONS
1. REPLACE CONTROLLERS AND CABINETS
  2. INSTALL NEW POLE, SIGNAL HEAD & CONDUIT AT 7TH STREET
  3. INSTALL RED SIGNALS AND REMOVE 2-SEC HEADS AT UNIVERSITY

EXIST CONDUCTOR SCHEDULE - 7th & Lemon

| CONDUCTOR RUN | Ø1 | Ø2 | Ø3 | Ø4 | Ø5 | Ø6 | Ø7 | Ø8 | Ø9 | Ø10 | Ø11 | Ø12 | Ø13 | Ø14 |
|---------------|----|----|----|----|----|----|----|----|----|-----|-----|-----|-----|-----|
| CONDUCTORS    | 1  | 1  | 1  | 1  | 1  | 1  | 1  | 1  | 1  | 1   | 1   | 1   | 1   | 1   |
| Ø1            |    |    |    |    |    |    |    |    |    |     |     |     |     |     |
| Ø2            |    |    |    |    |    |    |    |    |    |     |     |     |     |     |
| Ø3            |    |    |    |    |    |    |    |    |    |     |     |     |     |     |
| Ø4            |    |    |    |    |    |    |    |    |    |     |     |     |     |     |
| Ø5            |    |    |    |    |    |    |    |    |    |     |     |     |     |     |
| Ø6            |    |    |    |    |    |    |    |    |    |     |     |     |     |     |
| Ø7            |    |    |    |    |    |    |    |    |    |     |     |     |     |     |
| Ø8            |    |    |    |    |    |    |    |    |    |     |     |     |     |     |
| Ø9            |    |    |    |    |    |    |    |    |    |     |     |     |     |     |
| Ø10           |    |    |    |    |    |    |    |    |    |     |     |     |     |     |
| Ø11           |    |    |    |    |    |    |    |    |    |     |     |     |     |     |
| Ø12           |    |    |    |    |    |    |    |    |    |     |     |     |     |     |
| Ø13           |    |    |    |    |    |    |    |    |    |     |     |     |     |     |
| Ø14           |    |    |    |    |    |    |    |    |    |     |     |     |     |     |

PHASE DIAGRAM

