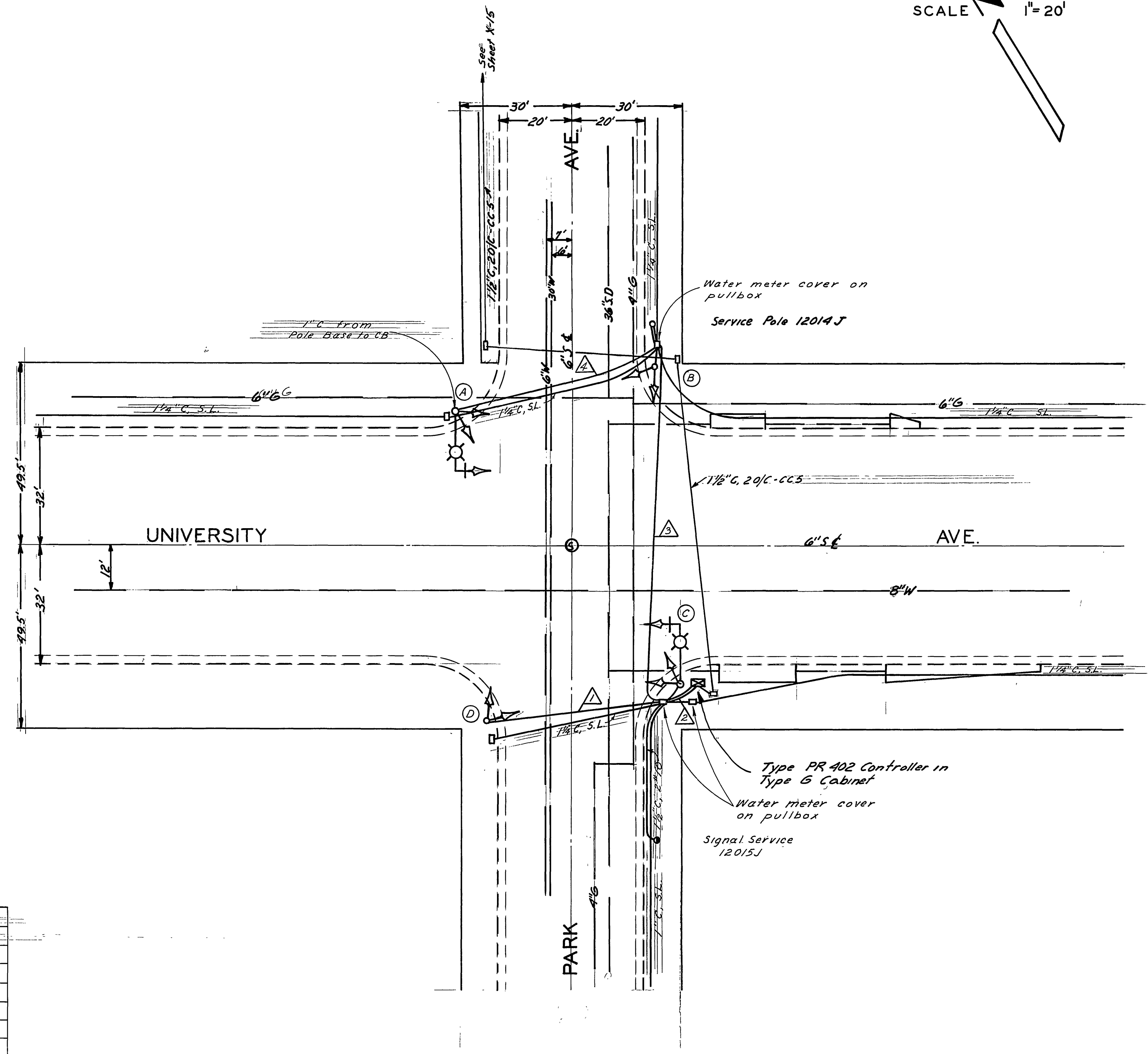


LOCATION	STANDARD	LUMINAIRE	SIGNAL S			WALK-DON'T WALK	
			TYPE	MTG.	LENS SIZE	TYPE	MTG.
(A)		20,000 MV	2-W3C 1-W3C	B-2	3-8" 3-12"		
(B)	10-Type 1		2-W3C	A-4	3-6" 3-12"		
(C)		20,000 MV	2-W3C 1-W3C	B-2	3-8" 3-12"		
(D)	10-Type 1		2-W3C	A-4	3-6" 3-12"		



CONDUCTOR SCHEDULE

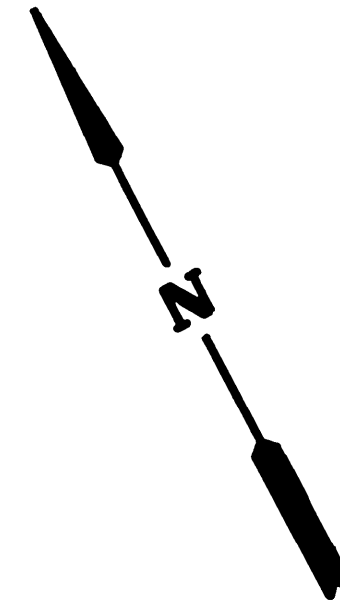
CONDUCTOR RUNS	1				2				3				4			
CONDUCTORS	8	10	12	14	8	10	12	14	8	10	12	14	8	10	12	14
ØA			3				3				3				3	
ØB			3				3				3				3	
ØA Ped											2				2	
ØB Ped											2				2	
Common			1		1				1				1			
Signal Service					2								2			
Street Light													2			
TOTAL			7		3		6		1		10		2		10	
CONDUIT SIZE	1 1/4"				1 1/4"				1 1/4"				1 1/4"			

REVISIONS		CITY OF RIVERSIDE, CALIFORNIA DEPARTMENT OF PUBLIC WORKS	
MARK	DATE	DESCRIPTION	
	1/18/62	As Built	ADD JMH
	10/1/67	As Built	

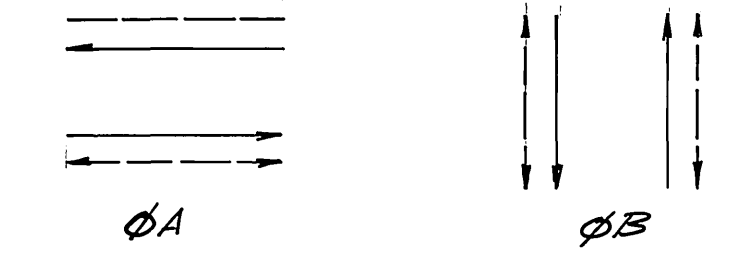
**TRAFFIC SIGNALS**  
**UNIVERSITY AVE.**  
**PARK & AVE.**

DESIGNED BY	CHECKED BY	APPROVED BY	<b>X-126</b>
DRAWN BY		DIRECTOR OF PUBLIC WORKS	
RECOMMENDED BY	ASSISTANT CITY ENGINEER	DATE	

SHEET OF

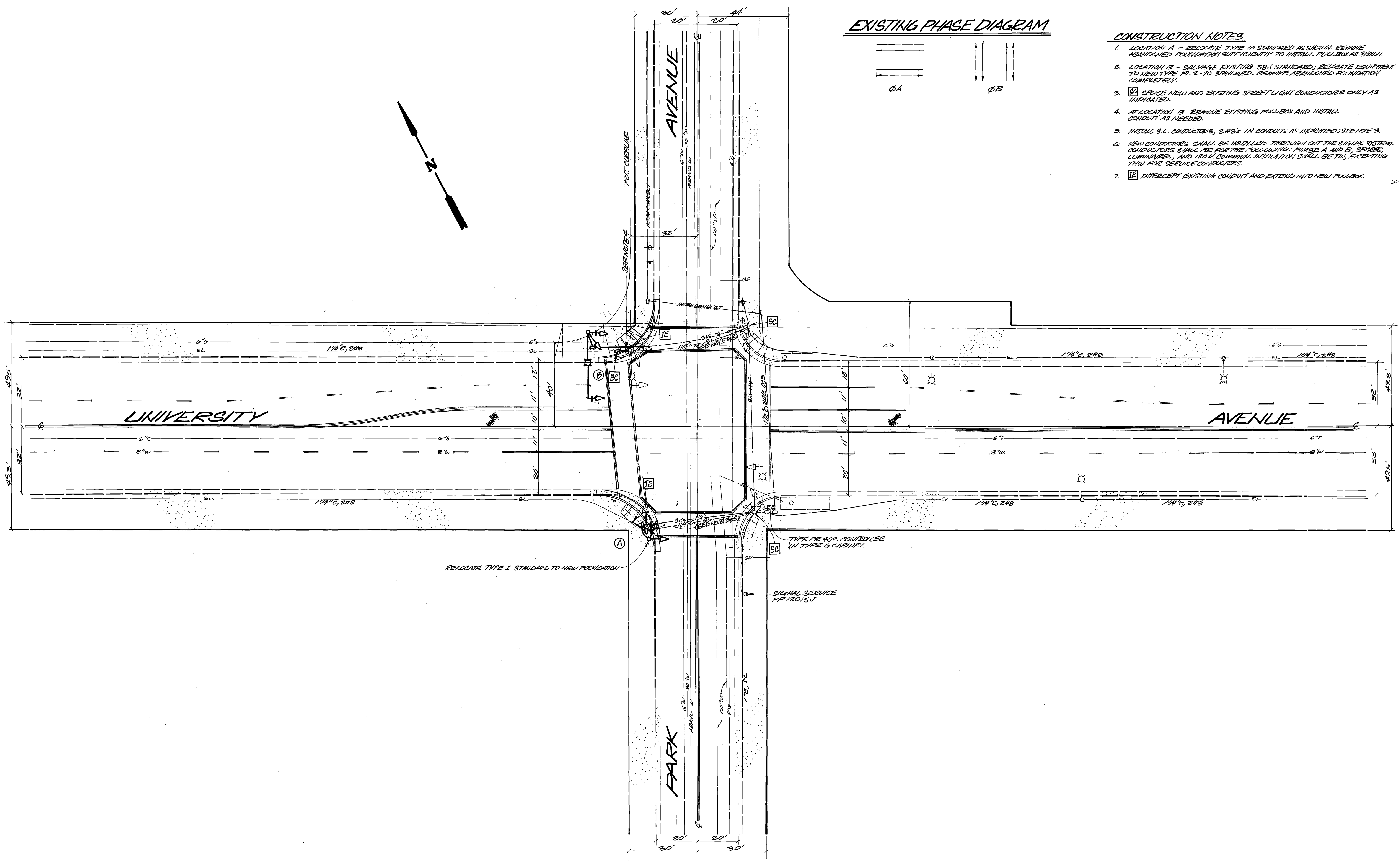


**EXISTING PHASE DIAGRAM**



**CONSTRUCTION NOTES**

1. LOCATION A - RELOCATE TYPE 1A STANDARD AS SHOWN. REMOVE ABANDONED FOUNDATION SUFFICIENTLY TO INSTALL PULLBOX AS SHOWN.
2. LOCATION B - SALVAGE EXISTING 58J STANDARD; RELOCATE EQUIPMENT TO NEW TYPE 1P-2 TO STANCHION. REMOVE ABANDONED FOUNDATION COMPLETELY.
3. [BC] SPICE NEW AND EXISTING STREET LIGHT CONDUCTORS ONLY AS INDICATED.
4. AT LOCATION B REMOVE EXISTING PULLBOX AND INSTALL CONDUIT AS NEEDED.
5. INSTALL S.L. CONDUCTORS, 2 #8'S IN CONDUITS AS INDICATED; SEE NOTE 3.
6. NEW CONDUCTORS SHALL BE INSTALLED THROUGH OUT THE SIGNAL SYSTEM. CONDUCTORS SHALL BE FOR THE FOLLOWING: PHASE A AND B, SPINDERS, CUMMINGS, AND 120 V. COMMON. INSULATION SHALL BE TW, EXCEPTING THW FOR SERVICE CONDUCTORS.
7. [IE] INTERCEPT EXISTING CONDUIT AND EXTEND INTO NEW PULLBOX.



<b>CITY OF RIVERSIDE</b> PUBLIC WORKS DEPARTMENT		<b>TRAFFIC SIGNAL REVISIONS</b> UNIVERSITY AVENUE REDWOOD DR. TO KANSAS AVE. UNIVERSITY AVE & PARK AVE.		ACCOUNT NO. 30-575-245-07 <b>X-126</b> SHEET <b>2</b> OF <b>2</b>
APPROVED BY PRINCIPAL ENGINEER PARK DEPARTMENT TRAFFIC DIVISION CHIEF P.W. ENGINEER	DATE 4-6-86 5-22-86	APPROVED BY William D. Anderson PUBLIC WORKS DIRECTOR	DATE <b>5-30-86</b> HORIZ. SCALE: 1" = 20' VERT. SCALE: 1" =	
DESIGNED BY DRAWN BY CHECKED BY	PUBLIC UTILITIES			



CONDUCTOR		TABLE							
CONTROL FUNCTION	CONDUCTORS	CONDUCTOR		RUNS					
VEHICLE & PEDESTRIAN HEADS, PEDESTRIAN PUSH BUTTONS, SPARES & COMMONS	12 WIRE IMSA 9 WIRE IMSA 5 WIRE IMSA 3 WIRE IMSA	1	1	2	1	1	-	-	-
DETECTOR CABLE	#16/2	-	-	-	-	-	-	-	-
PHASE 1		-	1	1	-	-	-	-	-
PHASE 2		-	2	2	2	2	2	2	2
PHASE 3		-	1	1	1	1	1	1	1
PHASE 4		-	1	1	1	1	1	1	1
PHASE 5		-	2	2	2	2	2	2	2
PHASE 6		-	1	1	1	1	1	1	1
PHASE 7		-	1	1	1	1	1	1	1
PHASE 8		-	1	1	1	1	1	1	1
TOTALS		-	2	10	7	5	5	3	3
PRE-EMPTION CABLE	4/20	-	-	2	2	2	1	1	-
INTERCONNECT CABLE	6-PAIR #19	-	-	-	-	-	-	-	-
115 M.S.	#12	2	2	-	2	2	2	2	-
LUMINAIRES	#8	2	2	-	2	2	2	2	-
SIGNAL SERVICE	#6	-	-	2	-	-	-	-	-
CONDUIT SIZE		53	78	12-90/2-78	90	78	78	1	53

- NOTE:
- SIGNAL SYSTEM SHALL HAVE NEW CABLES AND CONDUIT.
  - CONDUIT DIMENSIONS ARE IN MILLIMETERS.
  - SEE SPECIAL PROVISIONS FOR ADDITIONAL INFORMATION ON EMERGENCY PRE-EMPTION CABLE.

LOOP DESIGNATION	NUMBER OF LOOPS
111U	3
212U	2
212L	4
315U	3
416L	3
5J1U	3
6J2U	2
6J2L	4
7J5U	3
8J6L	3

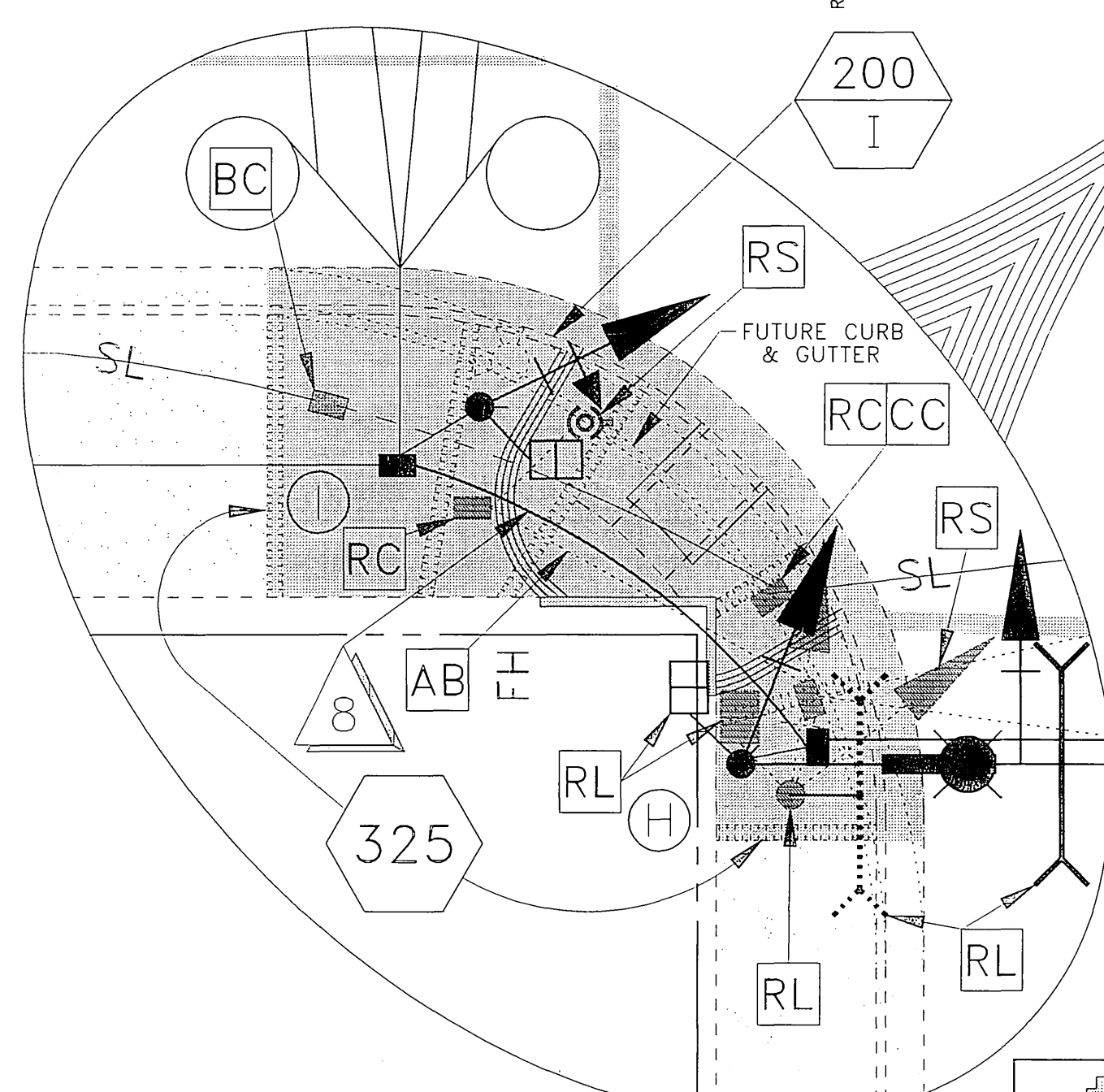
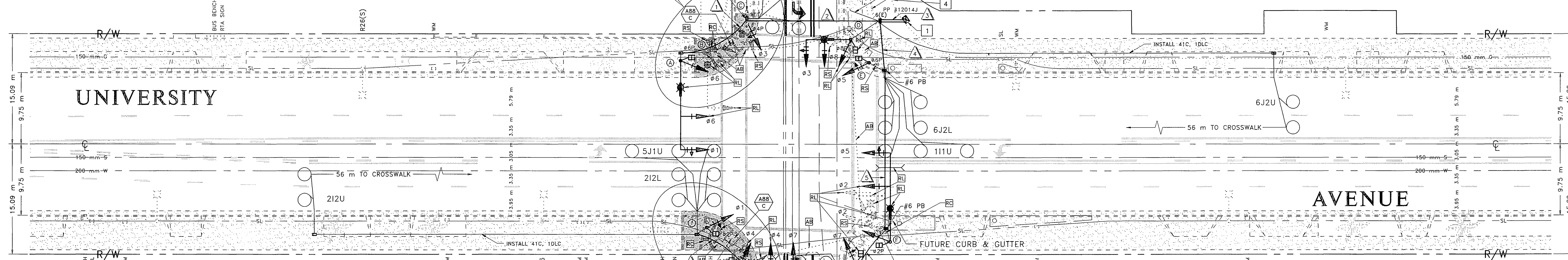
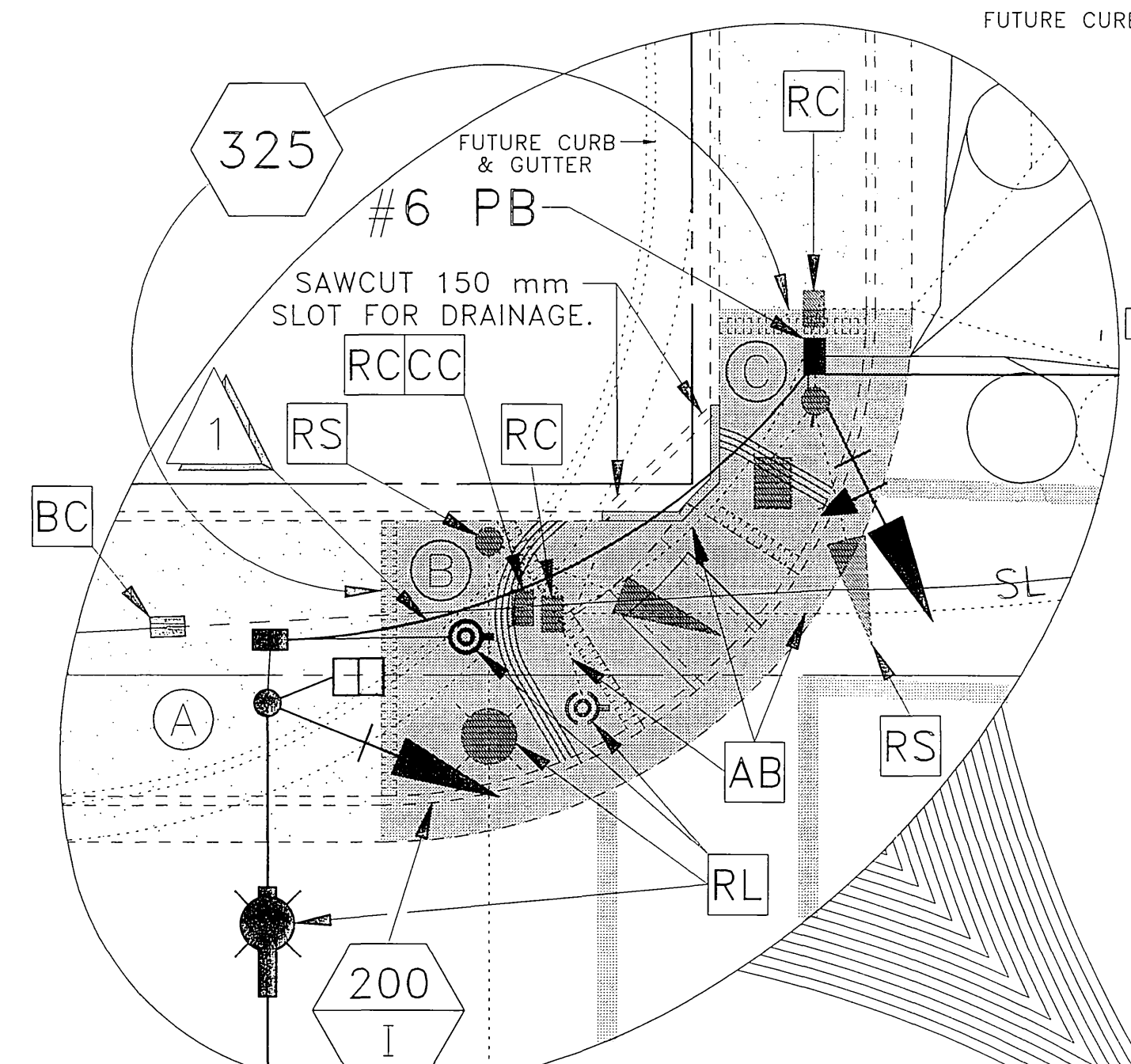
DETECTORS SHALL BE 2-CHANNEL RACK MOUNTED.

SIGNAL STANDARD		LUMINAIRE		U.S.M.S. LEGEND		SIGNAL MOUNTINGS			PPB PHASE	REMARKS
NO.	TYPE	HEIGHT	M.A.	M.A.	H.P.S.V.	VEHICLE	PEDESTRIAN	AUDIBLE		
①	26-4-129(N)	9.1m	12.2m(N)	4.6m(N)	200W(R)	PARK(N) AVE 3700	MAS(N) SV-1-T(N)	SP-1-T(N)	(I(P)) (N)	SEE NOTE 7
②	PED POST (R)	1.17m								4(N)
③	1A(E)	3.05m				UNIVERSITY(N) AVE 2800	MAS(N) SV-1-T(R)	SP-1-T(R)	(I(C)) (N)	6(N)
④	17-3-129(N)	9.1m	6.1m(N)	3.7m(N)	200W(R)	UNIVERSITY(N) AVE 2800	MAS(N) SV-1-T(R)	SP-1-T(R)	(I(C)) (N)	6(N)
⑤	1A(N)	3.05m				UNIVERSITY(N) AVE 2900	MAS(N) SV-1-T(N)	SP-1-T(N)	(I(P)) (N)	8(N)
⑥	26-4-129(N)	9.1m	12.2m(N)	4.6m(N)	200W(R)	PARK(N) AVE 3800	MAS(N) SV-1-T(N)	SP-1-T(N)	(I(P)) (N)	8(N)
⑦	1A(N)	3.05m				UNIVERSITY(N) AVE 2900	MAS(N) SV-1-T(N)	SP-1-T(N)	(I(C)) (N)	2(N)
⑧	19-3-129(N)	9.1m	7.6(N)	3.7m(N)	200W(N)	UNIVERSITY(N) AVE 2900	MAS(N) SV-1-T(N)	SP-1-T(N)	(I(C)) (N)	2(N)
⑨	1A(R)	3.05m					TV-1-T(N)	SP-1-T(N)	(I(P)) (N)	4(N)

(E) = EXISTING (N) = NEW (R) = RELOCATE

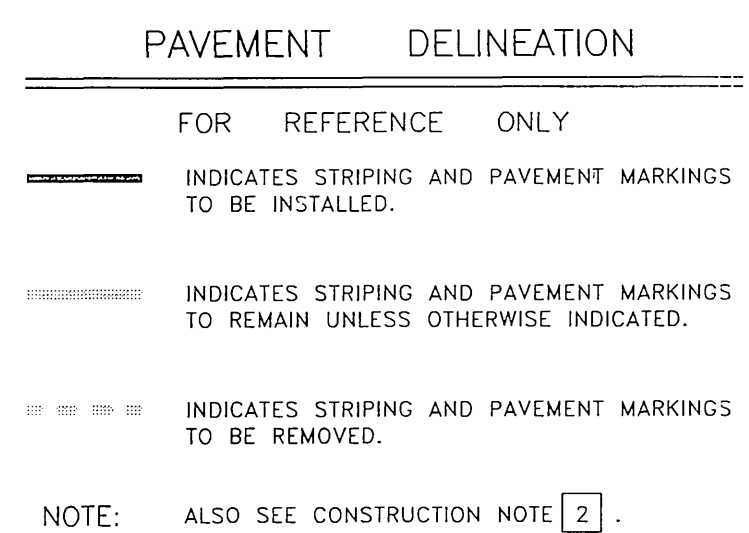
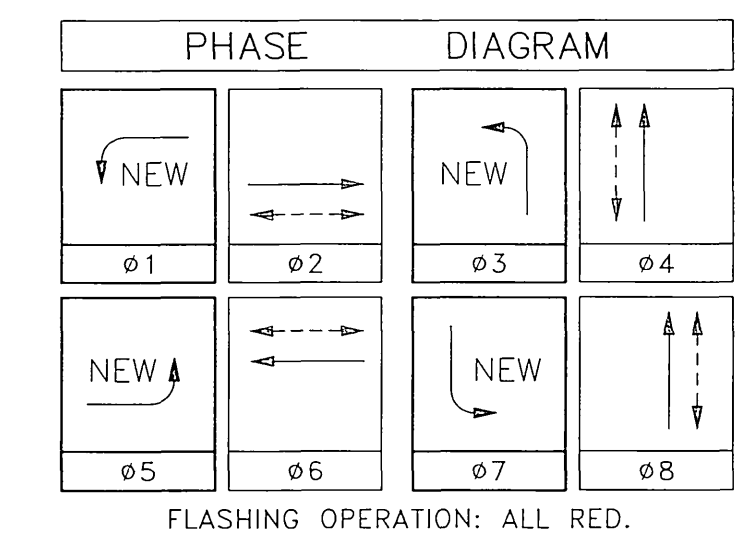
NOTES:

- ALL NEW VEHICULAR HEADS SHALL HAVE 300 mm LENSES.
- ALL NEW LEFT TURN HEADS SHALL HAVE ALL ARROWS.
- PEDESTRIAN PUSH BUTTONS SHALL BE INSTALLED ON THE POLE IN THE QUADRANT NEAREST THE CROSSWALK SERVING THE PHASE.
- LUMINAIRES SHALL BE HIGH PRESSURE SODIUM VAPOR.
- (I-C) OR (I-P) INDICATES AUDITORY PEDESTRIAN SIGNAL TO BE INSTALLED. (I-C) INDICATES CUCKOO SOUND. (I-P) INDICATES PEEP-PEEP SOUND.
- EQUIPMENT NOT TO BE REUSED SHALL BE SALVAGED.
- RELOCATE LUMINAIRE AND MAST ARM MOUNTED VEHICLE HEAD TO NEW POLE.
- RELOCATE PHASE 8 VEHICLE HEAD AND PEDESTRIAN HEAD TO NEW POLE.
- RELOCATE TYPE 1A POLE FROM LOCATION D TO E.
- RELOCATE LUMINAIRE, MAST ARM MOUNTED VEHICLE HEAD AND EMERGENCY PRE-EMPTION DETECTOR TO NEW POLE. REMOVE AND SALVAGE 68J10G18 POLE.
- RELOCATE PEDESTRIAN HEAD FROM LOCATION F TO NEW POLE.
- RELOCATE PHASE 4 VEHICLE HEAD, PEDESTRIAN HEAD AND EMERGENCY PRE-EMPTION DETECTOR TO NEW POLE.
- RELOCATE TYPE 1A POLE FROM LOCATION H TO I.



**RISER DETAIL**  
INSTALL 120V SIGNAL, 120V SIGN AND 240V STREET LIGHT SERVICE PER STANDARD DRAWING NO. 612.

**RISER DETAIL**  
EXIST 120V SIGNAL AND 240V STREET LIGHT SERVICE PER STANDARD DRAWING NO. 612.



**CONSTRUCTION NOTES**

- INSTALL MODEL 170E CONTROLLER UNIT HOUSED IN 332 CABINET.
- REMOVE PAVEMENT MARKING BY CITY FORCES.
- INSTALL INDICATED SIGN ON STREET LIGHT STANDARD.
- REDIRECT SPRINKLERS SPRAY AWAY FROM CONTROLLER AS REQUIRED.
- CONSTRUCT P.C.C. CURB AND GUTTER (6" C.F.) PER C/R STANDARD DRAWING NO. 200.
- CONSTRUCT SIDEWALK PER C/R STANDARD DRAWING NO. 325.
- INSTALL SIGN PER C/R STANDARD DRAWING NUMBER 666.
- CONSTRUCT WHEELCHAIR RAMP PER CALTRANS STANDARD PLANS NO. A88, CASE C.

**GENERAL NOTES**

- DETECTOR LOOPS SHALL BE INSTALLED IN THE PRESENCE OF THE CITY TRAFFIC ENGINEER OR HIS REPRESENTATIVE.
- TYPICAL DETECTOR LOOP SPACINGS: 3 m AND 4.5 m.
- PAVEMENT DELINEATION SHOWN HEREON IS FOR REFERENCE ONLY.
- ALL SIGNING, STRIPING AND PAVEMENT MARKING REQUIREMENTS SHALL BE COMPLETED AT LEAST ONE DAY PRIOR TO TURN-ON.

**IMPORTANT NOTICE**  
Section 4216/4217 of the Government Code requires a Dig Alert Identification Number to be placed before a "Hazard to Excavate" will be void. For your Dig Alert I.D. Number call CALL TOLL FREE TWO WORKING DAYS BEFORE YOU DIG UNDERGROUND SERVICE ALERT 1-800-227-2600

ENGINEER IN RESPONSIBLE CHARGE  
Richard D. McGrath  
R.C.E. NO. 31952 EXPIRES 12-31-2000  
DATE 5-27-98

REGISTERED PROFESSIONAL ENGINEER  
RICHARD D. McGRATH  
No. 31952  
E.O. 12-31-2000  
CIVIL  
STATE OF CALIFORNIA

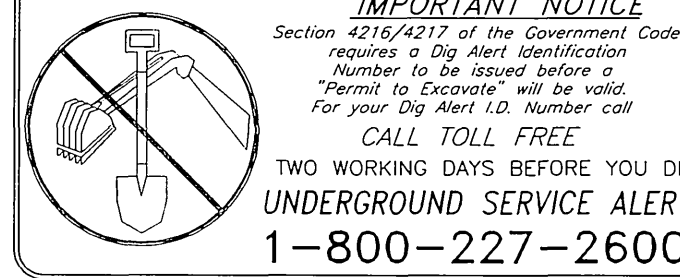
CITY OF RIVERSIDE, CALIFORNIA  
DEPARTMENT OF PUBLIC WORKS  
APPROVED BY: [Signature]  
P.W. INSPECTION: [Signature]  
TRAFFIC DIVISION: [Signature]  
CHIEF P.W. ENGR: [Signature]  
PUBLIC UTILITIES: [Signature]

TRAFFIC SIGNAL REVISION  
**UNIVERSITY AVENUE AND PARK AVENUE**  
SCALE 1:300

ACCT. NO. 0430-541600-440303-35065  
**X-126A**  
SHEET 2 OF 6  
FILE NAME: X126A.DWG

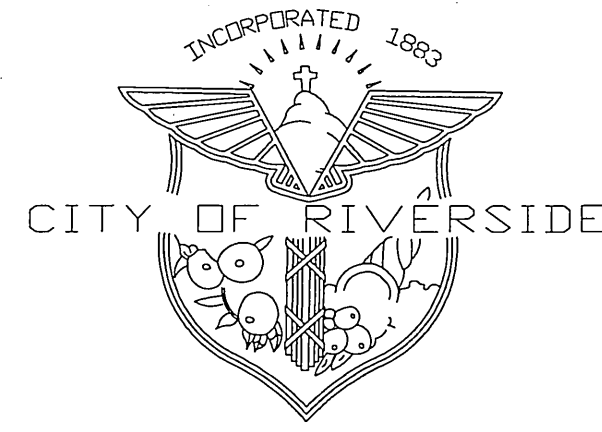
CONTRACT TE-98-2

CONTRACTOR'S LICENSE REQUIREMENTS "A" OR "C-10"





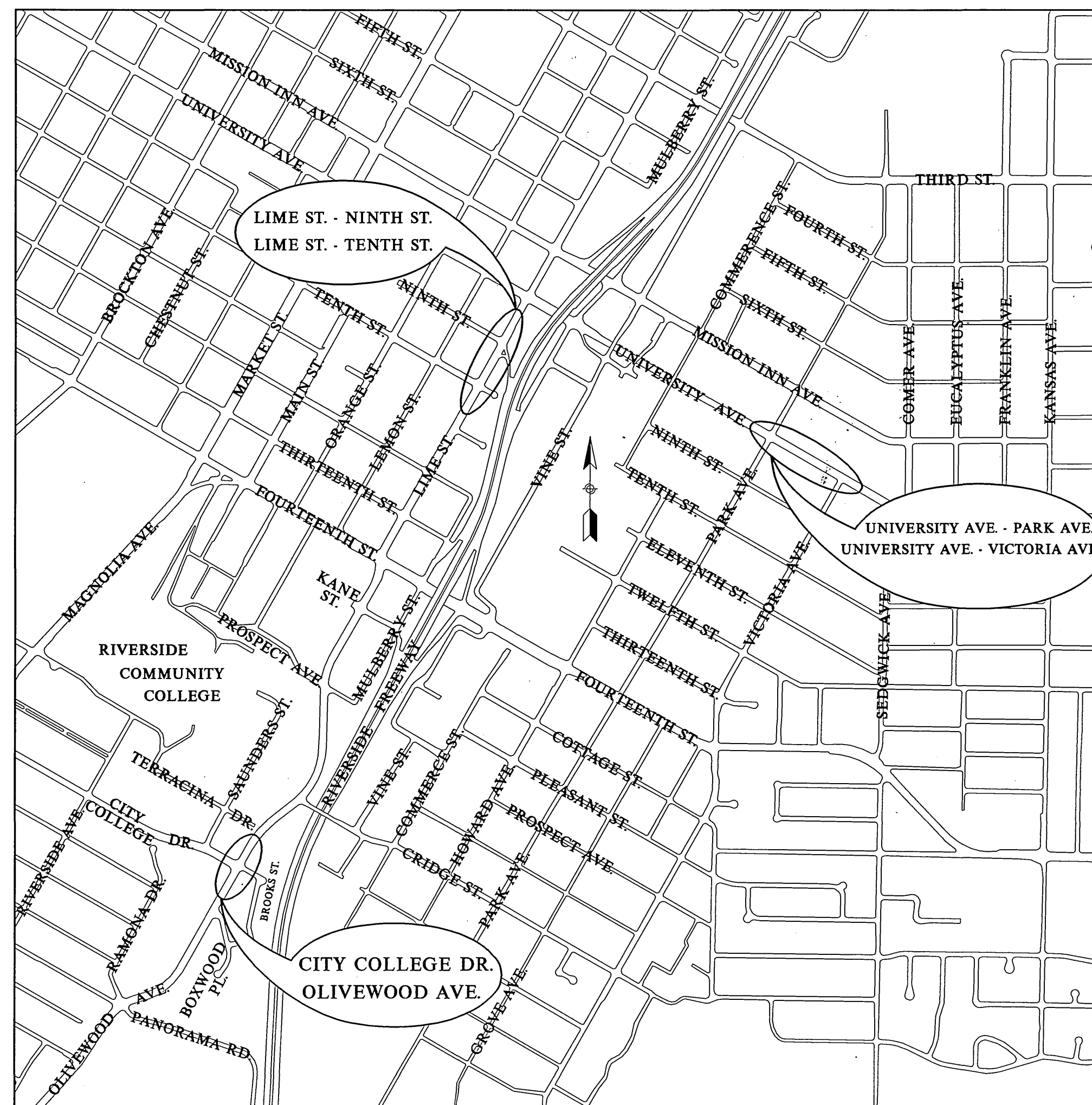
# RIVERSIDE



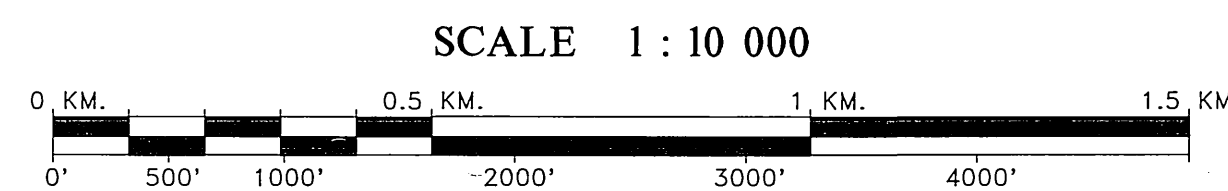
# CALIFORNIA

PUBLIC WORKS DEPARTMENT  
TRAFFIC ENGINEERING DIVISION

CONTRACT TE-98-2



**PROJECT VICINITY MAP**

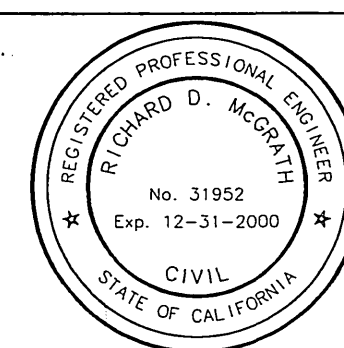


CONTRACTOR'S LICENSE REQUIREMENTS "A" OR "C-10"

PLAN NO.	INTERSECTION
X-126A	UNIVERSITY AVE. - PARK AVE.
X-154A	LIME ST. - NINTH ST.
X-411A	CITY COLLEGE DR. - OLIVEWOOD AVE.
X-116A	LIME ST. - TENTH ST.
X-441A	UNIVERSITY AVE. - VICTORIA AVE.



ENGINEER IN RESPONSIBLE CHARGE  
*Richard D. McGrath*  
 RICHARD D. McGRATH  
 R.C.E. NO. 31952 EXPIRES 12-31-2000  
 DATE 5-27-98



MARK	REVISIONS	APPR.	DATE

DESIGNED BY *Bm* DRAWN BY *B.M.M.* CHECKED BY

CITY OF RIVERSIDE, CALIFORNIA  
DEPARTMENT OF PUBLIC WORKS

APPROVED BY: *R. McSwalt*  
 RICHARD D. McSWALT  
 DIRECTOR OF PUBLIC WORKS

DATE 5-20-98

TRAFFIC SIGNAL REVISION

**FIVE LOCATIONS**

SCALE 1:10 000

0430-541600-440303-35065  
 0230-541600-440223-35065  
 0430-541600-440303-35067  
 0230-541600-440223-35066  
 0432-541600-440302-36000

**X-126A**

SHEET 1 OF 6

FILE NAME: X126B.DWG