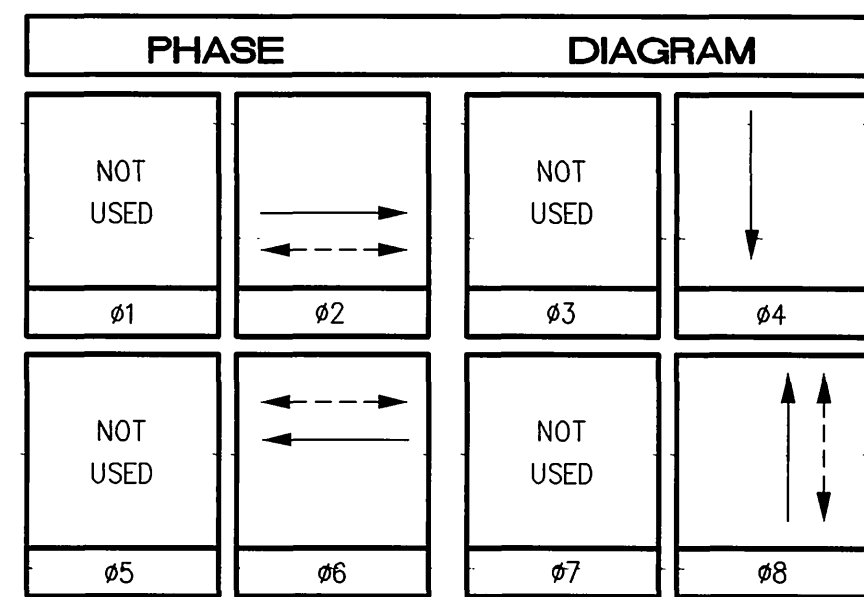
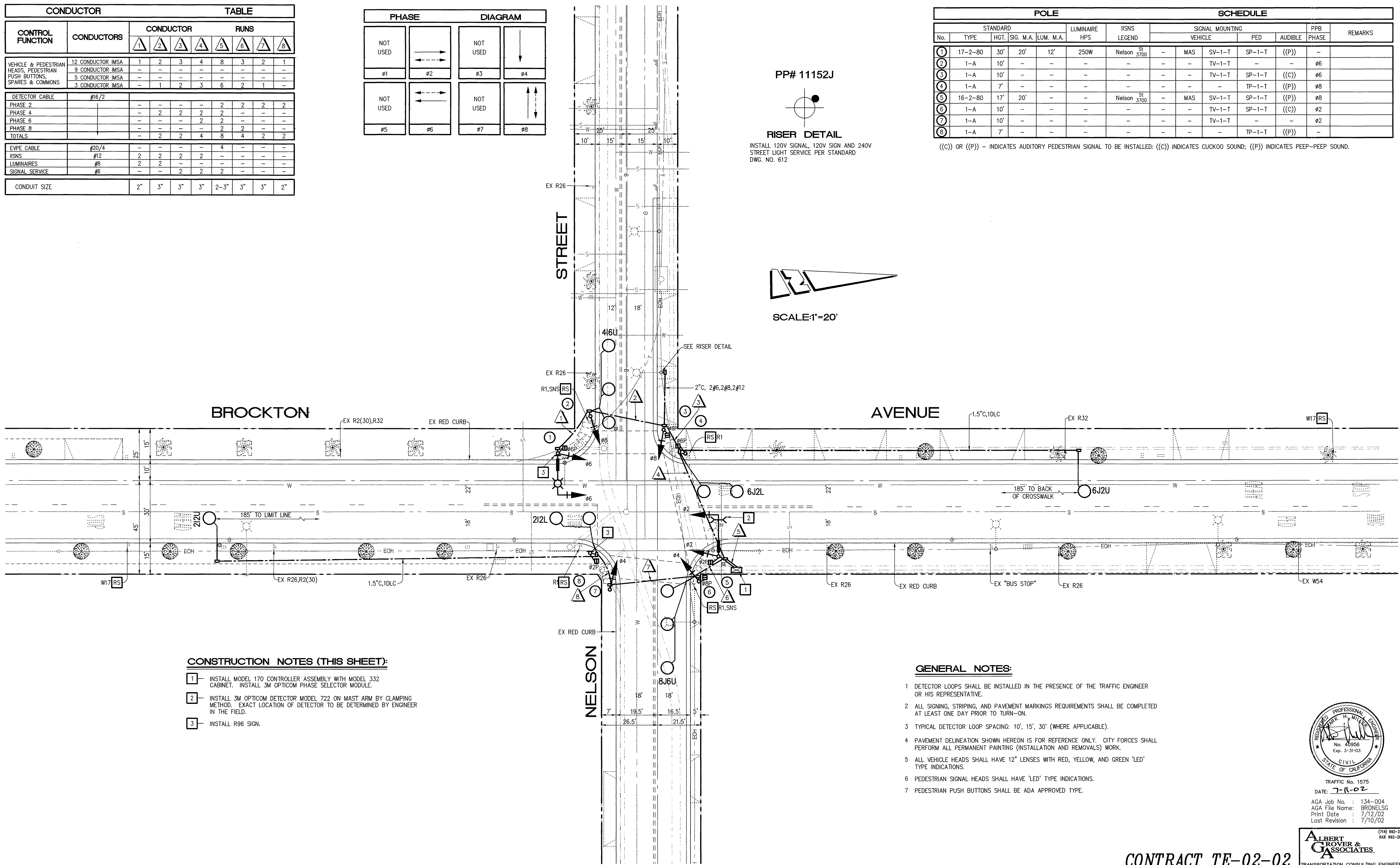
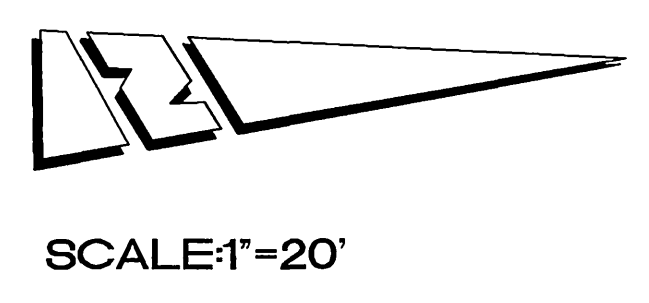
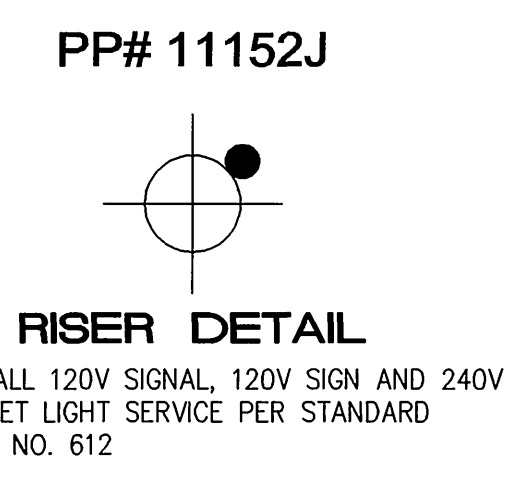


CONDUCTOR		TABLE							
CONTROL FUNCTION	CONDUCTORS	CONDUCTOR				RUNS			
		1	2	3	4	5	6	7	8
VEHICLE & PEDESTRIAN HEADS, PEDESTRIAN PUSH BUTTONS, SPARES & COMMONS	12 CONDUCTOR IMSA	1	2	3	4	8	3	2	1
	9 CONDUCTOR IMSA	-	-	-	-	-	-	-	-
	5 CONDUCTOR IMSA	-	-	-	-	-	-	-	-
DETECTOR CABLE	#16/2	-	-	-	-	2	2	2	2
PHASE 2		-	-	-	-	-	-	-	-
PHASE 4		-	2	2	2	2	-	-	-
PHASE 6		-	-	-	2	2	-	-	-
PHASE 8		-	-	-	2	2	-	-	-
TOTALS		-	2	2	4	8	4	2	2
EVPE CABLE	#20/4	-	-	-	-	4	-	-	-
IISNS	#12	2	2	2	2	-	-	-	-
LUMINAIRES	#8	2	2	-	-	-	-	-	-
SIGNAL SERVICE	#6	-	-	2	2	-	-	-	-
CONDUIT SIZE		2"	3"	3"	3"	2-3"	3"	3"	2"



POLE		SCHEDULE										
No.	TYPE	STANDARD		LUMINAIRE HPS	IISNS LEGEND	SIGNAL MOUNTING			PPB PHASE	REMARKS		
		HGT.	SIG. M.A.			VEHICLE	PED	AUDIBLE				
1	17-2-80	30'	20'	12'	250W	Nelson St 3700	-	MAS	SV-1-T	SP-1-T	((P))	-
2	1-A	10'	-	-	-	-	-	-	TV-1-T	-	-	#6
3	1-A	10'	-	-	-	-	-	-	TV-1-T	SP-1-T	((C))	#6
4	1-A	7'	-	-	-	-	-	-	-	TP-1-T	((P))	#8
5	16-2-80	17'	20'	-	-	Nelson St 3700	-	MAS	SV-1-T	SP-1-T	((P))	#8
6	1-A	10'	-	-	-	-	-	-	TV-1-T	SP-1-T	((C))	#2
7	1-A	10'	-	-	-	-	-	-	TV-1-T	-	-	#2
8	1-A	7'	-	-	-	-	-	-	-	TP-1-T	((P))	-

((C)) OR ((P)) - INDICATES AUDITORY PEDESTRIAN SIGNAL TO BE INSTALLED: ((C)) INDICATES CUCKOO SOUND; ((P)) INDICATES PEEP-PEEP SOUND.



- CONSTRUCTION NOTES (THIS SHEET):**
- 1 - INSTALL MODEL 170 CONTROLLER ASSEMBLY WITH MODEL 332 CABINET. INSTALL 3M OPTICOM PHASE SELECTOR MODULE.
  - 2 - INSTALL 3M OPTICOM DETECTOR MODEL 722 ON MAST ARM BY CLAMPING METHOD. EXACT LOCATION OF DETECTOR TO BE DETERMINED BY ENGINEER IN THE FIELD.
  - 3 - INSTALL R96 SIGN.

- GENERAL NOTES:**
- 1 DETECTOR LOOPS SHALL BE INSTALLED IN THE PRESENCE OF THE TRAFFIC ENGINEER OR HIS REPRESENTATIVE.
  - 2 ALL SIGNING, STRIPING, AND PAVEMENT MARKINGS REQUIREMENTS SHALL BE COMPLETED AT LEAST ONE DAY PRIOR TO TURN-ON.
  - 3 TYPICAL DETECTOR LOOP SPACING: 10', 15', 30' (WHERE APPLICABLE).
  - 4 PAVEMENT DELINEATION SHOWN HEREON IS FOR REFERENCE ONLY. CITY FORCES SHALL PERFORM ALL PERMANENT PAINTING (INSTALLATION AND REMOVALS) WORK.
  - 5 ALL VEHICLE HEADS SHALL HAVE 12" LENSES WITH RED, YELLOW, AND GREEN 'LED' TYPE INDICATIONS.
  - 6 PEDESTRIAN SIGNAL HEADS SHALL HAVE 'LED' TYPE INDICATIONS.
  - 7 PEDESTRIAN PUSH BUTTONS SHALL BE ADA APPROVED TYPE.

TRAFFIC No. 1575  
DATE: 7-10-02  
AGA Job No. : 134-004  
AGA File Name: BRONELSG  
Print Date : 7/12/02  
Last Revision : 7/10/02

CONTRACT TE-02-02

Underground Service Alert  
Call: TOLL FREE  
1-800  
422-4133  
TWO WORKING DAYS BEFORE YOU DIG

CITY OF RIVERSIDE, CALIFORNIA DEPARTMENT OF PUBLIC WORKS		TRAFFIC SIGNAL PLAN		ACCOUNT NO.
APPROVED BY	DATE	BY	DATE	X-135 SHEET 8 OF 10
PRINCIPAL ENGINEER	8/1/02	PA		
INSPECTION	8/15/02	CB		
TRAFFIC DIVISION				
CHIEF P. W. ENGINEER				
PUBLIC UTILITIES	7/16/02	CB		
DESIGNED BY	DRAWN BY	CHECKED BY	DATE	

HORIZ. SCALE: 1"= 20' VERT. SCALE: 1"= -

ALBERT GROVER & ASSOCIATES  
TRANSPORTATION CONSULTING ENGINEERS  
211 E. Imperial Hwy., Suite 208 Fullerton, CA 92835  
(714) 992-2990  
FAX 992-2983