

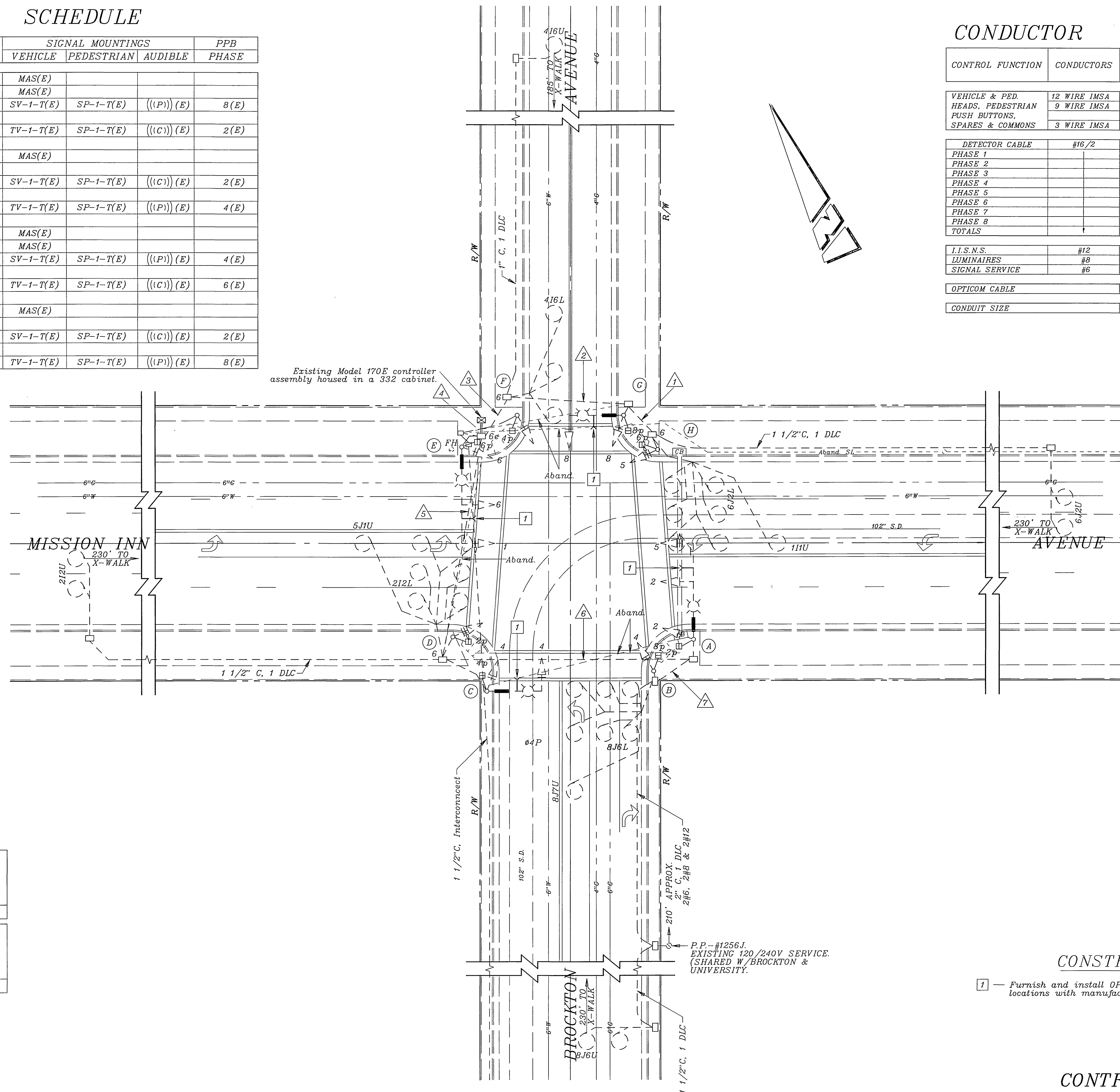
EQUIPMENT SCHEDULE

NO.	SIGNAL STANDARD				LUMINAIRE		I.I.S.N.S. LEGEND	SIGNAL MOUNTINGS			PPB PHASE
	TYPE	HCHT.	M.A.	M.A.	H.P.S.V.	VEHICLE		PEDESTRIAN	AUDIBLE		
(A)	24-4-80(E)	30'(E)	35'(E)	12'(E)	200W(E)	Brockton	AVE 3700 (N)	MAS(E)			
								MAS(E)			
								SV-1-T(E)	SP-1-T(E)	((P)) (E)	8 (E)
(B)	1A(E)	10'(E)						TV-1-T(E)	SP-1-T(E)	((C)) (E)	2 (E)
(C)	19-2-80(E)	30'(E)	25'(E)	12'(E)	200W(E)	Mission Inn	AVE 4100 (N)	MAS(E)			
								SV-1-T(E)	SP-1-T(E)	((C)) (E)	2 (E)
(D)	1A(E)	10'(E)						TV-1-T(E)	SP-1-T(E)	((P)) (E)	4 (E)
(E)	24-4-80(E)	30'(E)	35'(E)	12'(E)	200W(E)	Brockton	AVE 3800 (N)	MAS(E)			
								MAS(E)			
								SV-1-T(E)	SP-1-T(E)	((P)) (E)	4 (E)
(F)	1A(E)	10'(E)						TV-1-T(E)	SP-1-T(E)	((C)) (E)	6 (E)
(G)	17-2-80(E)	30'(E)	20'(E)	12'(E)	200W(E)	Mission Inn	AVE 4000 (N)	MAS(E)			
								SV-1-T(E)	SP-1-T(E)	((C)) (E)	2 (E)
(H)	1A(E)	10'(E)						TV-1-T(E)	SP-1-T(E)	((P)) (E)	8 (E)

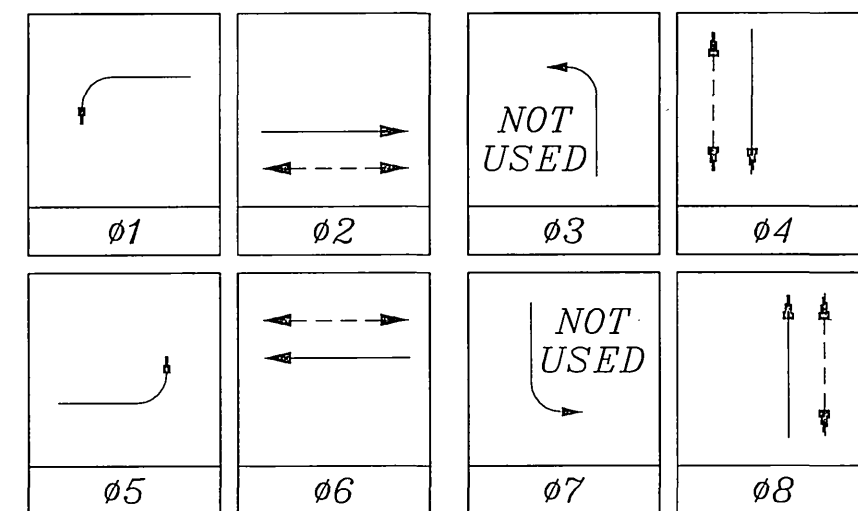
(N)=NEW, (E)=EXISTING

CONDUCTOR TABLE

CONTROL FUNCTION	CONDUCTORS	CONDUCTOR RUNS						
		1	2	3	4	5	6	7
VEHICLE & PED. HEADS, PEDESTRIAN PUSH BUTTONS, SPARES & COMMONS	12 WIRE IMSA 9 WIRE IMSA 3 WIRE IMSA	-	1	1	4	2	1	-
DETECTOR CABLE	#16/2	-	-	-	-	-	-	-
PHASE 1		1	1	1	1	-	-	-
PHASE 2		-	-	-	2	2	-	-
PHASE 3		-	-	-	-	-	-	-
PHASE 4		-	-	2	2	-	-	-
PHASE 5		-	-	-	1	1	-	-
PHASE 6		2	2	2	2	-	-	-
PHASE 7		-	-	-	-	-	-	-
PHASE 8		-	-	-	3	3	3	3
TOTALS		3	3	5	11	6	3	3
I.I.S.N.S.	#12	-	2	2	-	2	2	2
LUMINAIRES	#8	-	2	2	-	2	2	2
SIGNAL SERVICE	#6	-	-	-	2	2	2	2
OPTICOM CABLE		-	1	1	4	2	1	-
CONDUIT SIZE		2.5"	3"	3"	2-3"	3"	3"	2"
		(E)	(E)	(E)	(E)	(E)	(E)	(E)



PHASE DIAGRAM



CONSTRUCTION NOTES

1 - Furnish and install OPTICAL DETECTOR on signal mast arm per detail. Verify locations with manufacturer's representative prior to installing.

CONTRACT TE-01-09

IMPORTANT NOTICE
 Section 4216.4217 of the Government Code requires a Dig Alert identification number to be issued before a permit to excavate will be valid. For your Dig Alert ID, Number call CALL TOLL FREE TWO WORKING DAYS BEFORE YOU DIG UNDERGROUND SERVICE ALERT 1-800-227-2600

ENGINEER IN RESPONSIBLE CHARGE
 THOMAS JOHN BOYD
 R.C.E. No. 36170 expires 6/30/04
 DATE 3/1/02

REGISTERED PROFESSIONAL ENGINEER
 THOMAS JOHN BOYD
 No. 36170
 Exp. 06-30-2004
 CIVIL
 STATE OF CALIFORNIA

MARK REVISIONS APPR DATE
 DESIGNED BY: MAC DRAWN BY: MAC CHECKED BY:

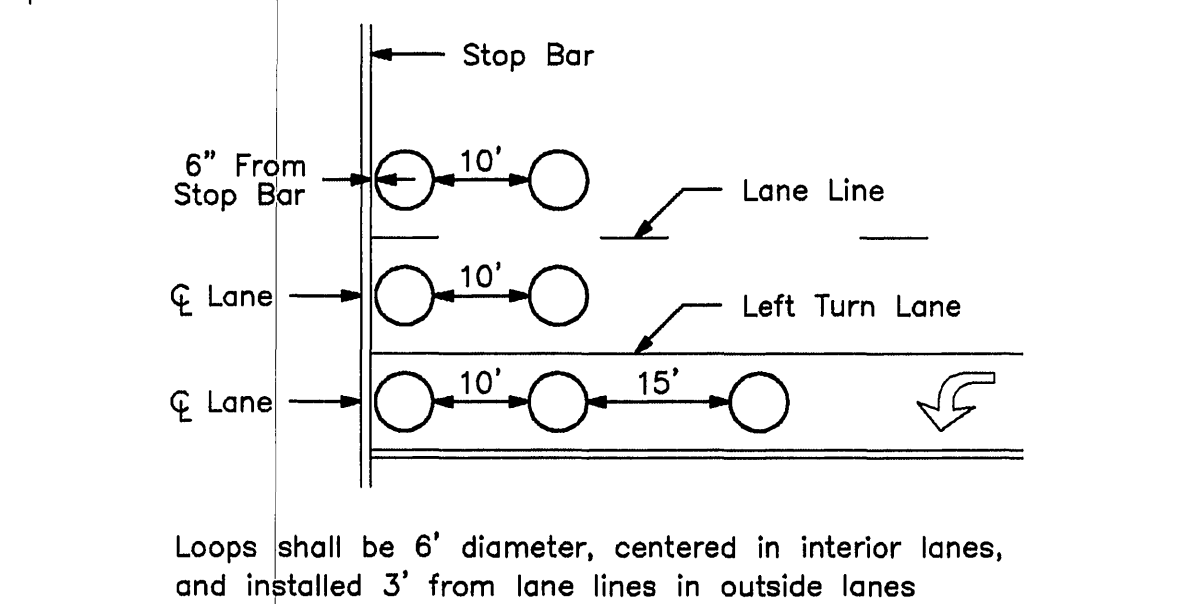
CITY OF RIVERSIDE, CALIFORNIA
 DEPARTMENT OF PUBLIC WORKS
 APPROVED BY: [Signature] DATE: 3/1/02
 ENGINEERING MANAGER
 PRINCIPAL ENGINEER
 P.W. INSPECTION
 TRAFFIC DIVISION
 PUBLIC UTILITIES

TRAFFIC SIGNAL MODIFICATION
 MISSION INN AVENUE AND BROCKTON AVENUE
 SCALE: 1" = 20'

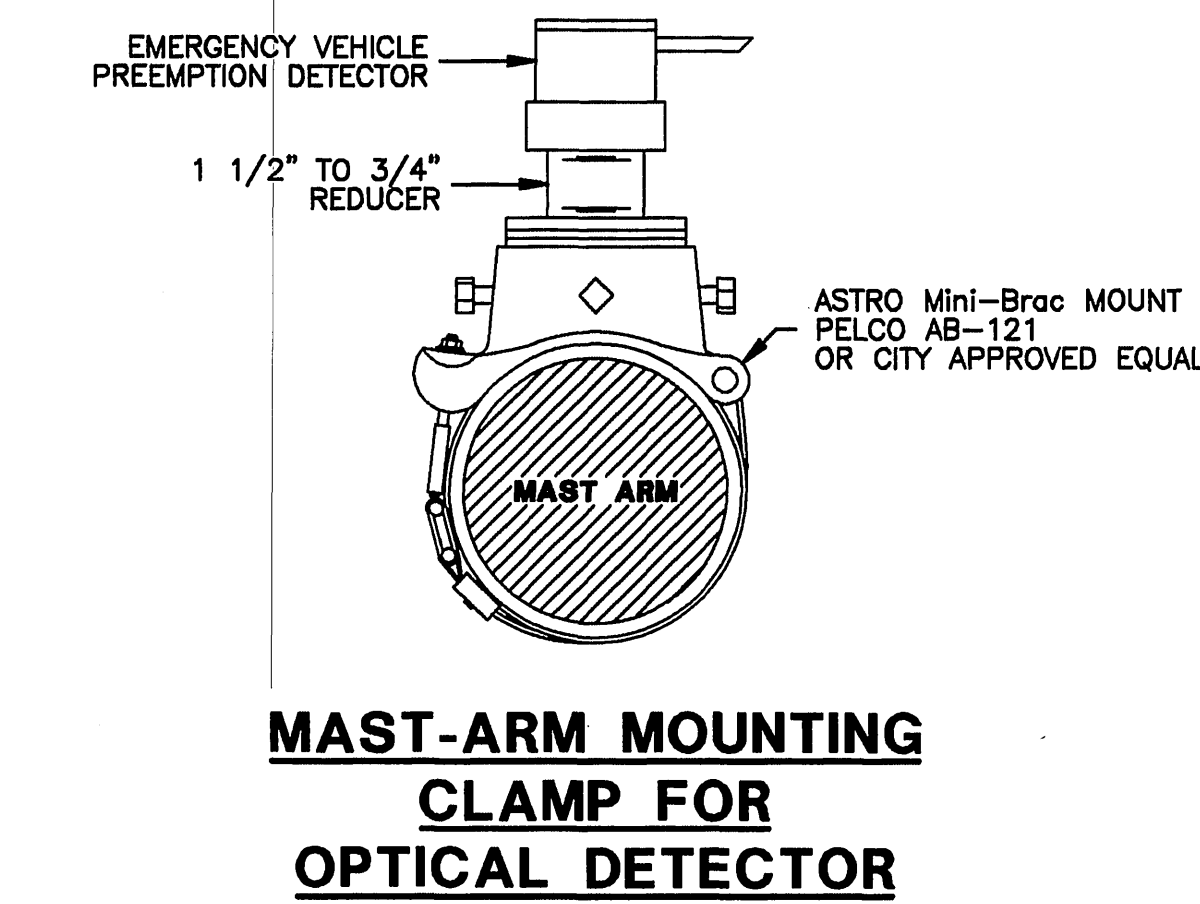
ACCT. NO. XXXXXXXXXX-XXXXXXX
 X-136A
 SHEET 1 OF 1
 FILE NAME: X136A.DWG

EQUIPMENT SCHEDULE											
NO.	SIGNAL STANDARD	TYPE	HIGHT.	LUMINAIRE		I.I.S.N.S. LEGEND	SIGNAL MOUNTINGS			PPB PHASE	REMARKS
				M.A.	H.P.S.V.		VEHICLE	PEDESTRIAN	AUDIBLE		
(A)	24-4-80(N)	30'(N)	35'(N)	12'(N)	200W(N)	Brockton	MAS(N)	SV-1-T(N)	SP-1-T(N)	((P)) (N)	8(N)
(B)	1A(N)	10'(N)					TV-1-T(N)	SP-1-T(N)	((C)) (N)		2(N)
(C)	19-2-80(N)	30'(N)	25'(N)	12'(N)	200W(N)	Mission Inn	MAS(N)	SV-1-T(N)	SP-1-T(N)	((C)) (N)	2(N)
(D)	1A(N)	10'(N)					TV-1-T(N)	SP-1-T(N)	((P)) (N)		4(N)
(E)	24-4-80(N)	30'(N)	35'(N)	12'(N)	200W(N)	Brockton	MAS(N)	SV-1-T(N)	SP-1-T(N)	((P)) (N)	4(N)
(F)	1A(E)	10'(E)					TV-1-T(N)	SP-1-T(E)	((C)) (N)		6(N)
(G)	17-2-80(E)	30'(E)	20'(E)	12'(E)	200W(N)	Mission Inn	MAS(E)	SV-1-T(E)	SP-1-T(E)	((C)) (N)	2(N)
(H)	1A(E)	10'(E)					TV-1-T(N)	SP-1-T(N)	((P)) (N)		8(N)

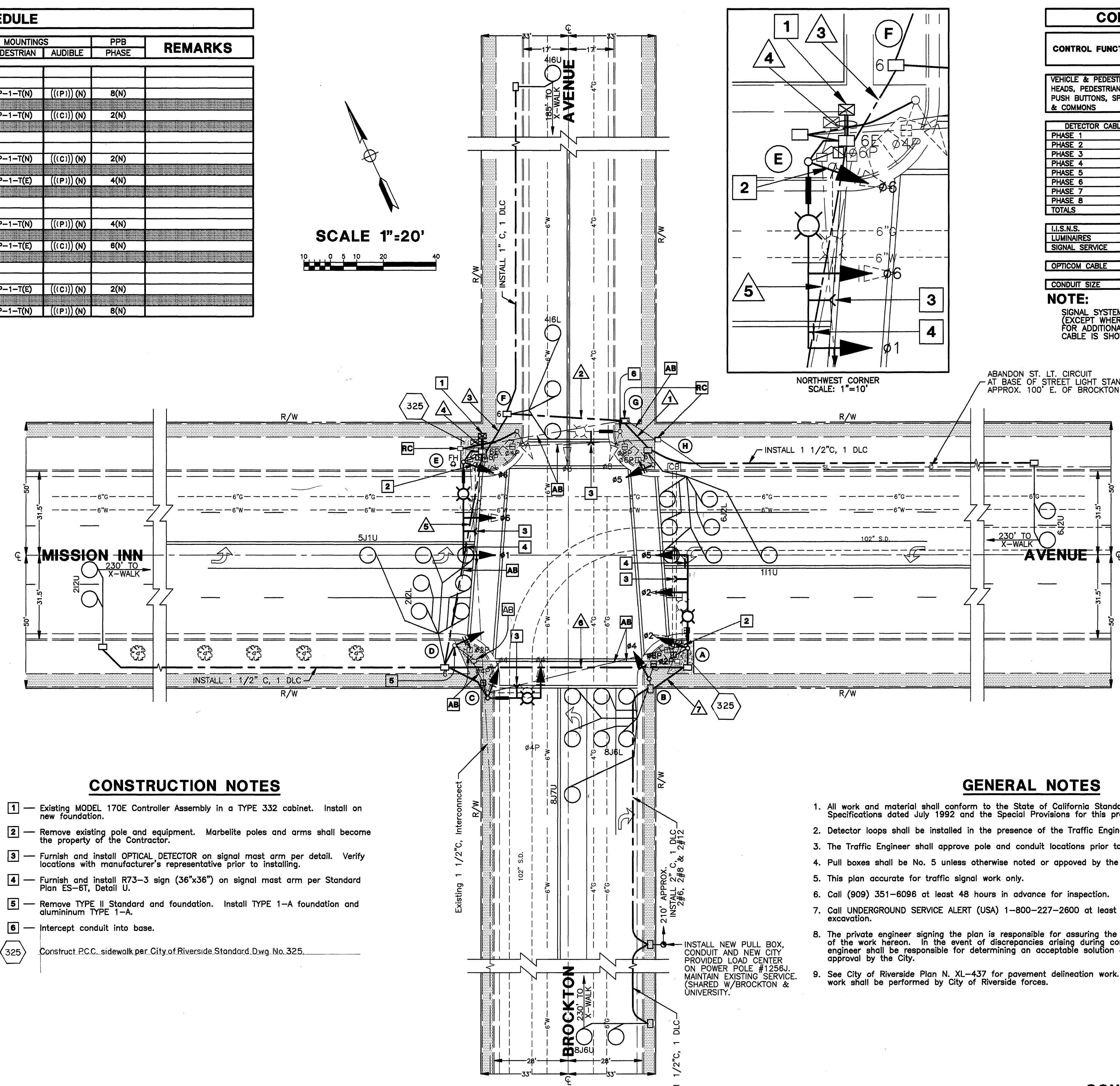
- (E)=EXISTING (N)=NEW
- NOTES:**
- ALL VEHICULAR HEADS SHALL HAVE 12" LENSES.
 - ALL LEFT TURN HEADS SHALL HAVE ALL ARROWS.
 - LUMINAIRES SHALL BE HIGH PRESSURE SODIUM VAPOR.
 - ((C)) OR ((P)) INDICATES AUDITORY PEDESTRIAN SIGNAL TO BE INSTALLED. ((C)) INDICATES CUCKOO SOUND; ((P)) INDICATES PEEP-PEEP SOUND.
 - PEDESTRIAN PUSH BUTTONS SHALL BE INSTALLED ON THE POLE IN THE QUADRANT NEAREST THE CROSSWALK SERVING THE PHASE.
 - FOUNDATIONS NOT TO BE REUSED SHALL BE COMPLETELY REMOVED.



DETECTOR LOOP INSTALLATION DETAIL

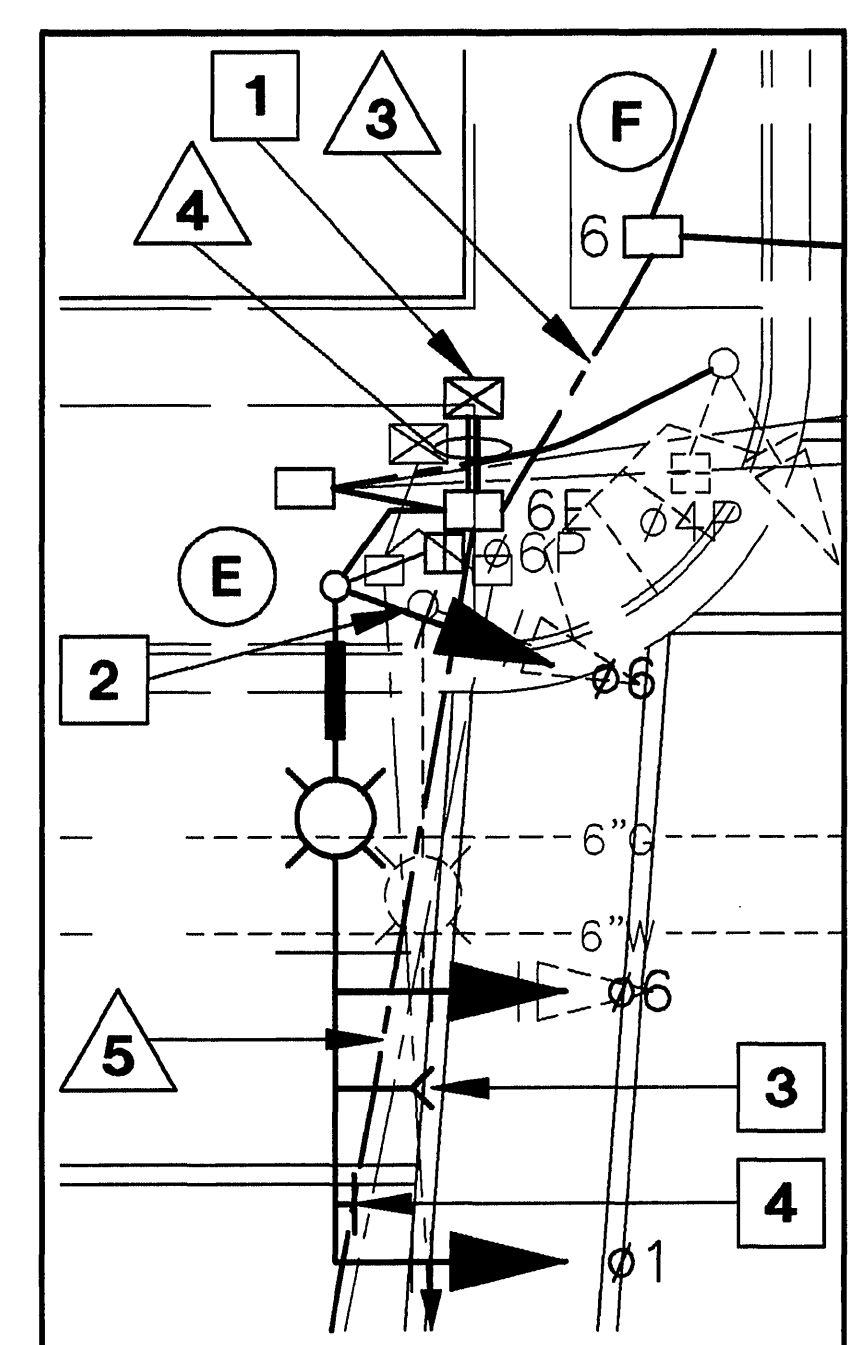


MAST-ARM MOUNTING CLAMP FOR OPTICAL DETECTOR



- CONSTRUCTION NOTES**
- Existing MODEL 170E Controller Assembly in a TYPE 332 cabinet. Install on new foundation.
 - Remove existing pole and equipment. Marbelite poles and arms shall become the property of the Contractor.
 - Furnish and install OPTICAL DETECTOR on signal mast arm per detail. Verify locations with manufacturer's representative prior to installing.
 - Furnish and install R73-3 sign (36"x36") on signal mast arm per Standard Plan ES-6T, Detail U.
 - Remove TYPE II Standard and foundation. Install TYPE 1-A foundation and aluminum TYPE 1-A.
 - Intercept conduit into base.
- 325 Construct P.C.C. sidewalk per City of Riverside Standard Dwg. No. 325.

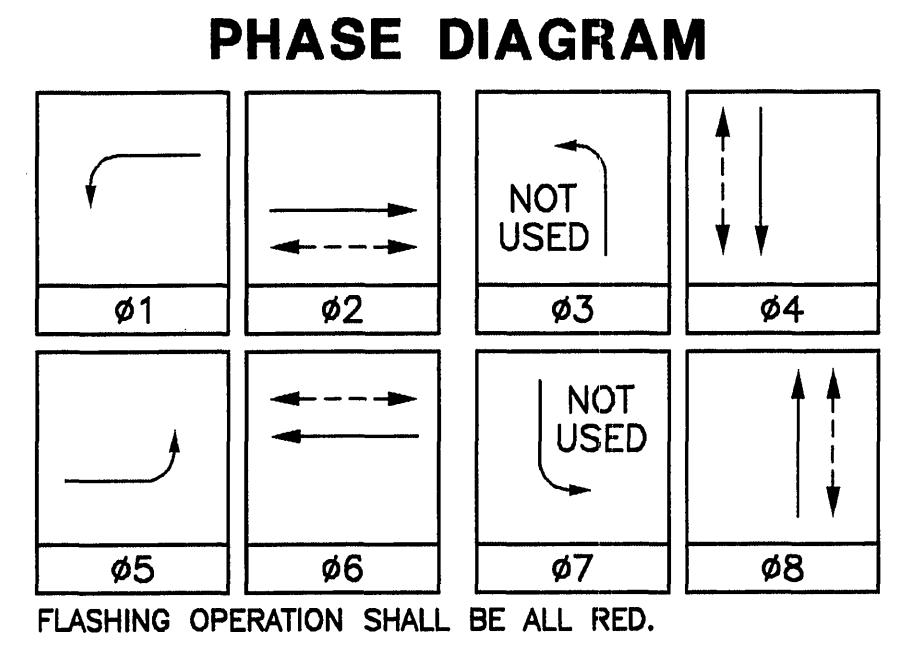
- GENERAL NOTES**
- All work and material shall conform to the State of California Standard Plans and Standard Specifications dated July 1992 and the Special Provisions for this project.
 - Detector loops shall be installed in the presence of the Traffic Engineer or his representative.
 - The Traffic Engineer shall approve pole and conduit locations prior to installation by Contractor.
 - Pull boxes shall be No. 5 unless otherwise noted or approved by the Traffic Engineer.
 - This plan accurate for traffic signal work only.
 - Call (909) 351-6096 at least 48 hours in advance for inspection.
 - Call UNDERGROUND SERVICE ALERT (USA) 1-800-227-2600 at least 2 working days prior to excavation.
 - The private engineer signing the plan is responsible for assuring the accuracy and acceptability of the work hereon. In the event of discrepancies arising during construction, the private engineer shall be responsible for determining an acceptable solution and revising the plan for approval by the City.
 - See City of Riverside Plan N. XL-437 for pavement delineation work. All pavement delineation work shall be performed by City of Riverside forces.



NORTHWEST CORNER SCALE: 1"=10'

CONDUCTOR		TABLE						
CONTROL FUNCTION	CONDUCTORS	CONDUCTOR RUNS						
		1	2	3	4	5	6	7
VEHICLE & PEDESTRIAN HEADS, PEDESTRIAN PUSH BUTTONS, SPARES & COMMONS	12 WIRE IMSA 9 WIRE IMSA 3 WIRE IMSA	-	1	1	4	2	1	-
DETECTOR CABLE	#16/2	-	-	-	-	-	-	-
PHASE 1		1	1	1	1	-	-	-
PHASE 2		-	-	-	2	2	-	-
PHASE 3		-	-	-	-	-	-	-
PHASE 4		-	-	2	2	-	-	-
PHASE 5		-	-	-	1	-	-	-
PHASE 6		2	2	2	2	-	-	-
PHASE 7		-	-	-	-	-	-	-
PHASE 8		-	-	-	3	3	3	3
TOTALS		3	3	5	11	6	3	3
I.I.S.N.S.	#12	-	2	2	-	2	2	2
LUMINAIRES	#8	-	2	2	-	2	2	2
SIGNAL SERVICE	#6	-	-	-	2	2	2	2
OPTICOM CABLE		-	1	1	4	2	1	-
CONDUIT SIZE		2.5"	3"	3"	2-3"	3"	3"	2"

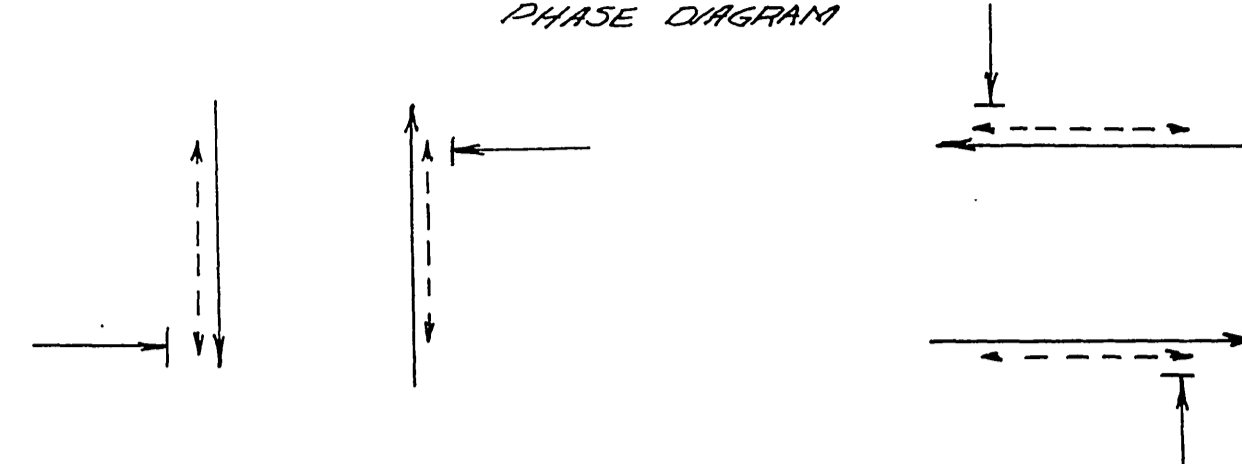
NOTE:
SIGNAL SYSTEM SHALL HAVE ALL NEW CONDUITS, CABLES AND CONDUCTORS (EXCEPT WHERE NOTED ON THE PLAN); SEE CONTRACT SPECIAL PROVISIONS FOR ADDITIONAL INFORMATION ON I.M.S.A. CABLE. WHERE 9 WIRE I.M.S.A. CABLE IS SHOWN, THE CONTRACTOR MAY USE 12 WIRE I.M.S.A. CABLE INSTEAD.



CONTRACT TE-99-4

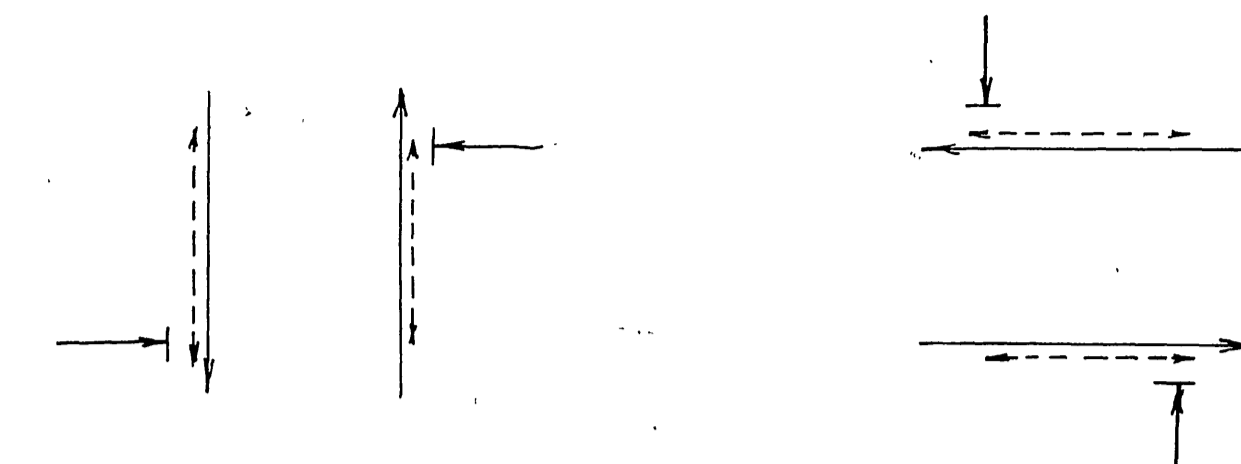
	<p>IMPORTANT NOTICE: Section 4216/4217 of the Government Code requires that the seal identification number be placed before the signature of the Engineer. For your file, the seal identification number will be visible.</p> <p>CALL TOLL FREE TWO WORKING DAYS BEFORE YOU DO UNDERGROUND SERVICE ALERT 1-800-227-2600</p>	<p>PRIVATE ENGINEERING NOTE CONSTRUCTION CONTRACTOR AGREES THAT IN ACCORDANCE WITH GENERALLY ACCEPTED CONSTRUCTION PRACTICES, CONSTRUCTION CONTRACTOR WILL BE REQUIRED TO ASSUME SOLE AND COMPLETE RESPONSIBILITY FOR JOB SITE CONDITIONS DURING THE COURSE OF CONSTRUCTION OF THE PROJECT, INCLUDING SAFETY OF ALL PERSONS AND PROPERTY. THIS REQUIREMENT SHALL BE MADE TO APPLY CONTINUOUSLY AND NOT BE LIMITED TO NORMAL WORKING HOURS, AND CONSTRUCTION CONTRACTOR FURTHER AGREES TO DEFEND, INDEMNIFY AND HOLD DESIGN PROFESSIONAL HARMLESS FROM ANY AND ALL LIABILITY, REAL OR ALLEGED, IN CONNECTION WITH THE PERFORMANCE OF WORK ON THIS PROJECT, EXCEPTING LIABILITY ARISING FROM THE SOLE NEGLIGENCE OF DESIGN PROFESSIONAL.</p>	<p>ENGINEER IN RESPONSIBLE CHARGE: <i>Lawrence S. Eisenhart</i> LAWRENCE S. EISENHART RCE NO. 13493 EXPIRATION DATE: 3-31-01 DATE: 2-18-00</p>	<p>LAWRENCE S. EISENHART CONSULTING ENGINEER 2070 Locust Court San Bernardino, California 92404 Tel: (909) 864-5406 Fax: (909) 864-5047</p>	<p>SCALE: AS SHOWN DATE: DEC. 1998</p>	<p>CITY OF RIVERSIDE, CALIFORNIA DEPARTMENT OF PUBLIC WORKS</p> <p>APPROVED BY: [Signature] PRINCIPLE ENGINEER P.W. INSPECTION TRAFFIC DIVISION CHIEF P.W. ENGINEER PUBLIC UTILITIES</p>	<p>TRAFFIC SIGNAL MODIFICATION PLAN MISSION INN AVENUE and BROCKTON AVENUE</p> <p>SCALE: 1"=20'</p>	<p>ACCT. NO. 430-541600-440303-35100 X-136 SHEET 1 OF 1 FILE NAME: X136.DWG</p>
	<p>APPROVED BY: [Signature] DIRECTOR OF PUBLIC WORKS</p> <p>DATE: 3-28-00</p>		<p>MARK REVISIONS APPR. DATE</p> <p>DESIGNED BY: L.S.E. DRAWN BY: L.S.E. CHECKED BY:</p>					

PHASE DIAGRAM

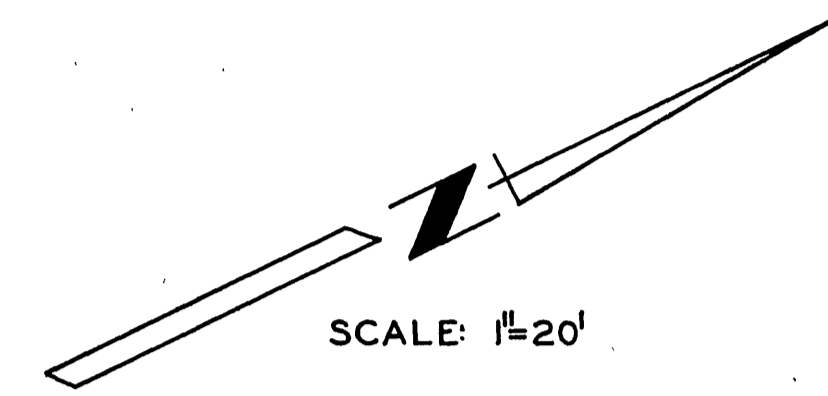


Flashing Indications: ϕA - Yellow ; ϕB - Red

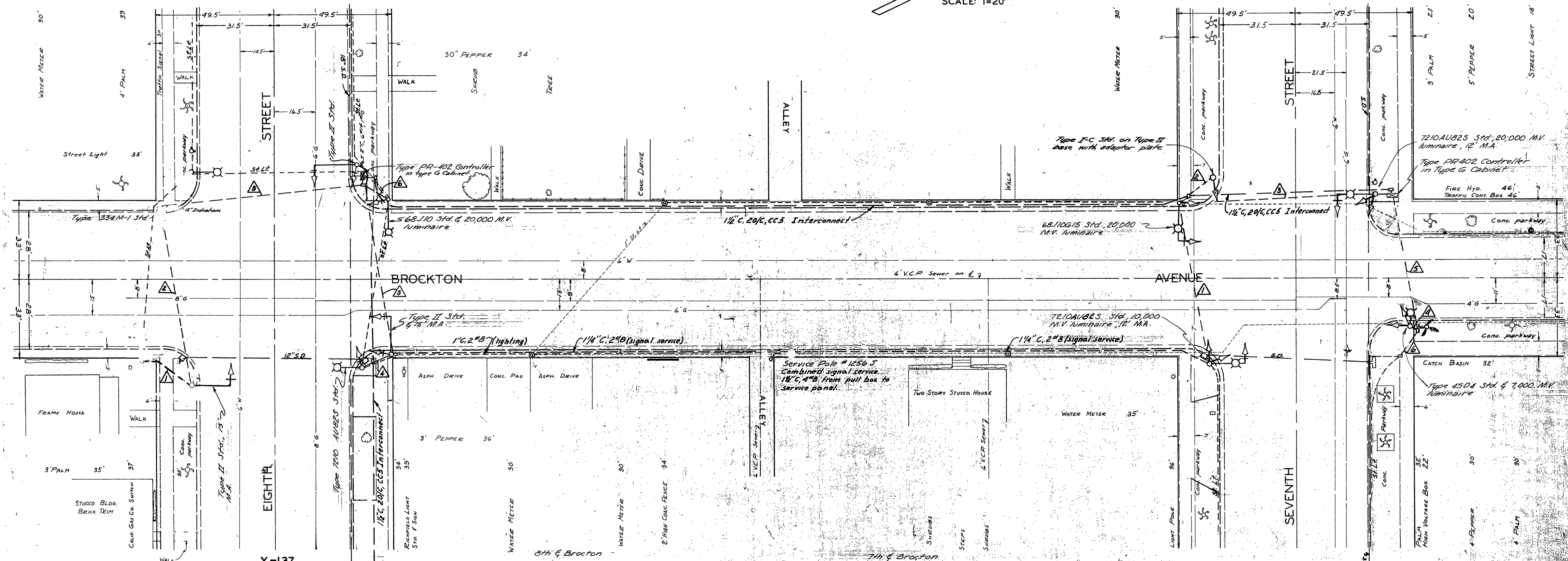
PHASE DIAGRAM



Flashing Indications: ϕA - Yellow ; ϕB - Red



SCALE: 1"=20'



X-137

X-136

FB T 4 / 2, 8

CONDUCTOR SCHEDULE

CONDUCTOR RUN	A				B				C				D			
	8	10	12	14	8	10	12	14	8	10	12	14	8	10	12	14
ϕA	3				3				3				3			
ϕB			3				3				3				3	
ϕA Ped. (omit)				1				1				1				1
110v Neutral	1				1				1				1			
Spares		3				1				3				3		
Signal Service									2							
Total Conductors	1	6			5				8	1	6	2	10	7		8
Conduit Size	1 1/2"				1 1/2"				1 1/2"				1 1/2"			

CONDUCTOR SCHEDULE

CONDUCTOR RUN	A				B				C				D			
	8	10	12	14	8	10	12	14	8	10	12	14	8	10	12	14
ϕA	3				3				3				3			
ϕB			3				3				3				3	
ϕA Ped. (omit)				1				1				1				1
110v Neutral	1				1				1				1			
Spares		3				2				3				3		
Signal Service									2							
Lighting																
Total Conductors	5	10			7	6	5		10	2			8	9	2	
Conduit Size	1 1/2"				1 1/2"				1 1/2"				1 1/2"			

REVISIONS			CITY OF RIVERSIDE, CALIFORNIA DEPARTMENT OF PUBLIC WORKS
MARK	DATE	DESCRIPTION	
	1/6/73	As Built	TRAFFIC SIGNALS BROCKTON AVE 7TH & 8TH STREETS
	12/16/73	Revised 50' 2-Way 1-Box	
	1/28/74	As Built 2-Way 1-Box	

DESIGNED BY	CHECKED BY	APPROVED BY	X-136
DRAWN BY ADD		DIRECTOR OF PUBLIC WORKS	X-137
RECOMMENDED BY	ASSISTANT CITY ENGINEER	DATE	SHEET OF 2